

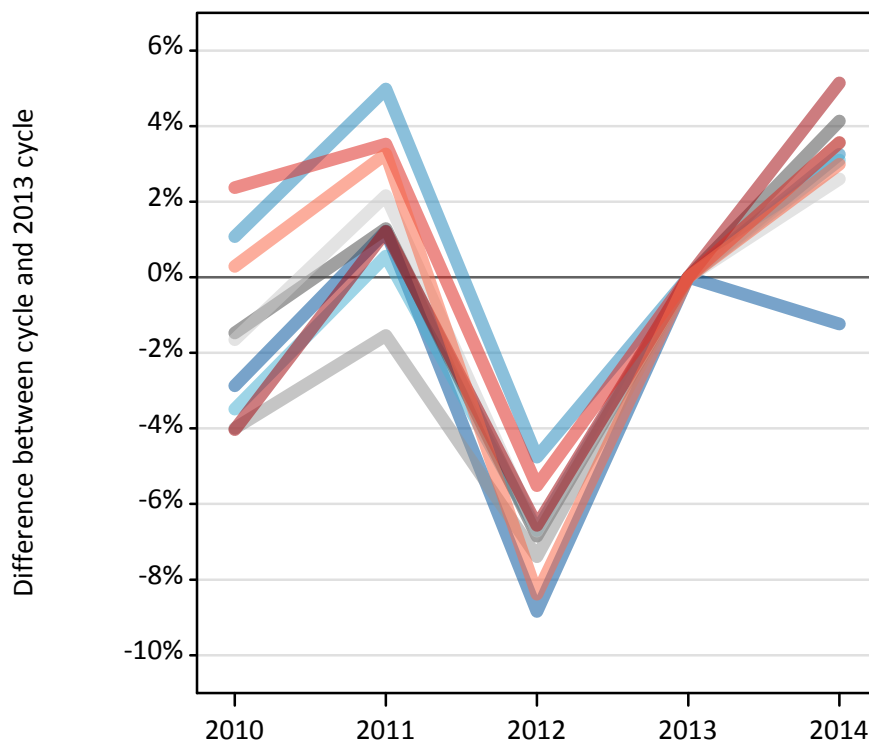
Daily Clearing Analysis: Region

Analysis at 00:05 on Wednesday 27 August 2014 (13 days after A level results day)

R.1 Placed applicants by region of domicile: 13 days after A level results day

Placed applicants: change relative to 2013 cycle totals

- North East
- North West
- Yorkshire and The Humber
- East Midlands
- West Midlands
- East of England
- London
- South East
- South West



R.2 Placed applicants by region of domicile: 13 days after A level results day

Applicant Status	Domicile	2010	2011	2012	2013	2014
Placed	North East	14,910	15,540	14,000	15,350	15,170
	North West	46,780	48,580	44,080	46,280	47,790
	Yorkshire and The Humber	30,600	31,880	29,580	31,710	32,690
	East Midlands	26,190	26,930	24,760	26,580	27,680
	West Midlands	34,940	35,830	33,700	36,390	37,690
	East of England	34,900	36,250	33,100	35,480	36,410
	London	59,770	63,040	58,190	62,280	65,480
	South East	56,070	56,700	51,750	54,770	56,730
	South West	31,610	32,540	28,870	31,510	32,460
	(England total)	335,760	347,300	318,040	340,360	352,080
	Scotland	28,490	28,000	28,030	28,550	29,190
	Northern Ireland	13,400	13,550	12,730	14,110	14,120
	Wales	17,280	17,120	17,720	17,880	18,660
	UK	394,930	405,980	376,510	400,900	414,050

R.3 Placed applicants by region of domicile: 13 days after A level results day

Placed applicants: change relative to 2013 cycle totals

Applicant Status	Domicile	2010	2011	2012	2013	2014
Placed	North East	-3%	1%	-9%	0%	-1%
	North West	1%	5%	-5%	0%	3%
	Yorkshire and The Humber	-3%	1%	-7%	0%	3%
	East Midlands	-1%	1%	-7%	0%	4%
	West Midlands	-4%	-2%	-7%	0%	4%
	East of England	-2%	2%	-7%	0%	3%
	London	-4%	1%	-7%	0%	5%
	South East	2%	4%	-6%	0%	4%
	South West	0%	3%	-8%	0%	3%
	(England total)	-1%	2%	-7%	0%	3%
	Scotland	-0%	-2%	-2%	0%	2%
	Northern Ireland	-5%	-4%	-10%	0%	0%
	Wales	-3%	-4%	-1%	0%	4%
	UK	-1%	1%	-6%	0%	3%

R.4 Placed applicants by region of domicile: 13 days after A level results day

Placed applicants: absolute change relative to 2013 cycle totals

Applicant Status	Domicile	2010	2011	2012	2013	2014
Placed	North East	-440	190	-1,360	0	-190
	North West	500	2,300	-2,200	0	1,510
	Yorkshire and The Humber	-1,110	180	-2,120	0	980
	East Midlands	-390	340	-1,820	0	1,100
	West Midlands	-1,450	-560	-2,690	0	1,290
	East of England	-590	770	-2,380	0	920
	London	-2,510	760	-4,090	0	3,200
	South East	1,300	1,930	-3,020	0	1,950
	South West	90	1,030	-2,640	0	940
	(England total)	-4,600	6,930	-22,330	0	11,720
	Scotland	-60	-540	-520	0	650
	Northern Ireland	-710	-550	-1,380	0	20
	Wales	-600	-760	-160	0	780
	UK	-5,970	5,080	-24,390	0	13,150

R.5 Placed 18 year old applicants by region of domicile: 13 days after A level results day

Placed 18 year old applicants: change relative to 2013 cycle totals



R.6 Placed 18 year old applicants by region of domicile: 13 days after A level results day

Applicant Status	Domicile	2010	2011	2012	2013	2014
Placed	North East	8,030	8,140	7,560	8,070	7,960
	North West	25,740	26,430	25,200	25,390	26,200
	Yorkshire and The Humber	16,370	16,960	16,510	17,240	18,060
	East Midlands	14,470	14,720	14,200	14,810	15,060
	West Midlands	18,310	18,950	18,590	19,460	20,250
	East of England	20,030	20,910	20,080	20,880	21,420
	London	27,940	29,990	29,320	31,270	32,650
	South East	30,560	31,080	30,620	31,270	32,120
	South West	15,610	16,430	15,440	15,930	16,260
	(England total)	177,050	183,600	177,510	184,310	189,980
	Scotland	14,690	13,990	14,060	14,140	14,310
	Northern Ireland	8,820	8,590	8,200	8,710	8,510
	Wales	9,760	9,410	9,700	9,630	10,030
	UK	210,330	215,590	209,470	216,800	222,830

R.7 Placed 18 year old applicants by region of domicile: 13 days after A level results day

Placed 18 year old applicants: change relative to 2013 cycle totals

Applicant Status	Domicile	2010	2011	2012	2013	2014
Placed	North East	-1%	1%	-6%	0%	-1%
	North West	1%	4%	-1%	0%	3%
	Yorkshire and The Humber	-5%	-2%	-4%	0%	5%
	East Midlands	-2%	-1%	-4%	0%	2%
	West Midlands	-6%	-3%	-4%	0%	4%
	East of England	-4%	0%	-4%	0%	3%
	London	-11%	-4%	-6%	0%	4%
	South East	-2%	-1%	-2%	0%	3%
	South West	-2%	3%	-3%	0%	2%
	(England total)	-4%	-0%	-4%	0%	3%
	Scotland	4%	-1%	-1%	0%	1%
	Northern Ireland	1%	-1%	-6%	0%	-2%
	Wales	1%	-2%	1%	0%	4%
	UK	-3%	-1%	-3%	0%	3%

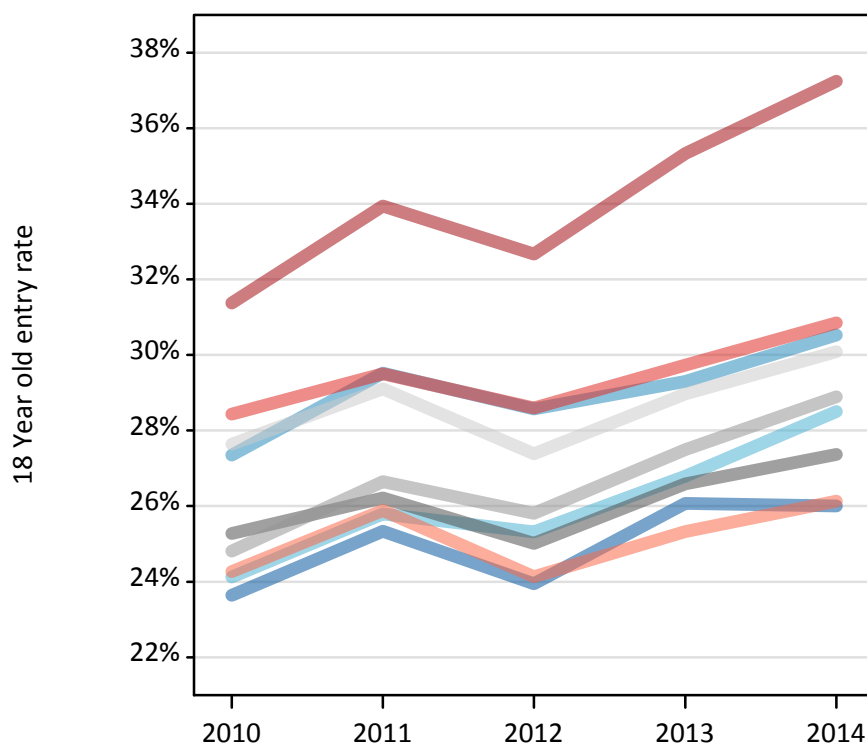
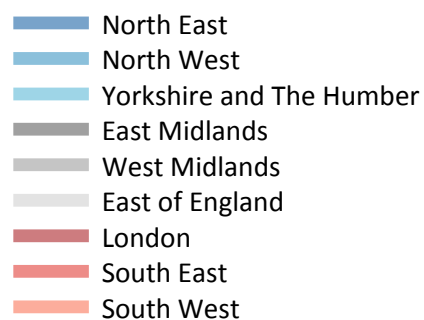
R.8 Placed 18 year old applicants by region of domicile: 13 days after A level results day

Placed 18 year old applicants: absolute change relative to 2013 cycle totals

Applicant Status	Domicile	2010	2011	2012	2013	2014
Placed	North East	-40	70	-520	0	-120
	North West	360	1,040	-190	0	810
	Yorkshire and The Humber	-870	-280	-730	0	830
	East Midlands	-350	-100	-620	0	250
	West Midlands	-1,160	-510	-870	0	790
	East of England	-850	30	-800	0	540
	London	-3,340	-1,290	-1,960	0	1,380
	South East	-710	-180	-640	0	850
	South West	-310	510	-480	0	340
	(England total)	-7,260	-710	-6,800	0	5,670
	Scotland	550	-150	-80	0	170
	Northern Ireland	110	-120	-510	0	-200
	Wales	130	-230	70	0	390
	UK	-6,470	-1,210	-7,320	0	6,030

R.9 Placed 18 year old applicants by region of domicile: 13 days after A level results day

Placed 18 year old applicants: entry rate



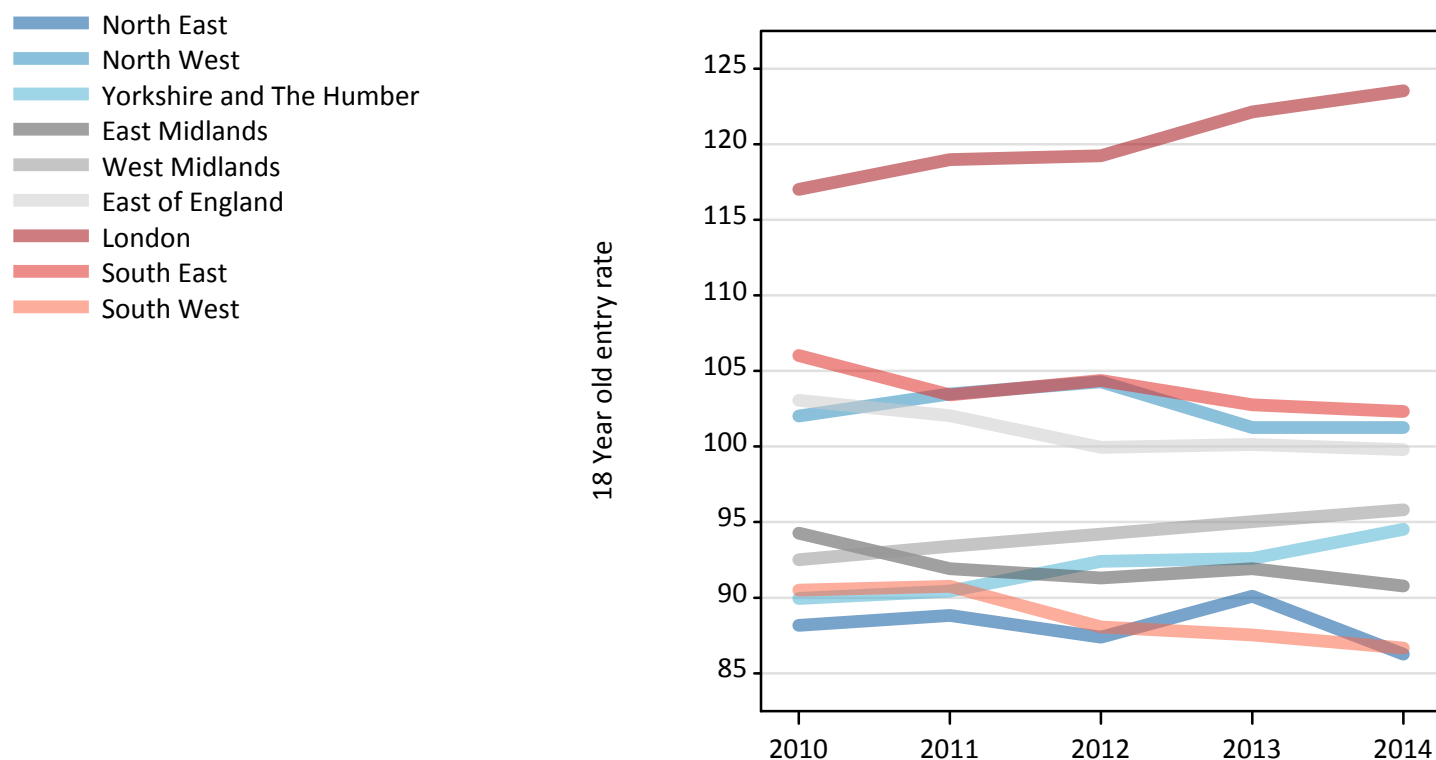
R.10 Placed 18 year old applicants by region of domicile: 13 days after A level results day

Placed 18 year old applicants: entry rate

Applicant Status	Domicile	2010	2011	2012	2013	2014
Placed	North East	23.6%	25.3%	23.9%	26.1%	26.0%
	North West	27.4%	29.5%	28.6%	29.3%	30.5%
	Yorkshire and The Humber	24.1%	25.8%	25.3%	26.8%	28.5%
	East Midlands	25.3%	26.2%	25.0%	26.6%	27.4%
	West Midlands	24.8%	26.6%	25.8%	27.5%	28.9%
	East of England	27.6%	29.1%	27.4%	29.0%	30.1%
	London	31.4%	33.9%	32.7%	35.3%	37.2%
	South East	28.4%	29.5%	28.6%	29.7%	30.8%
	South West	24.3%	25.9%	24.1%	25.3%	26.1%
	(England total)	26.8%	28.5%	27.4%	28.9%	30.1%
	Scotland	23.0%	22.3%	22.7%	23.0%	23.3%
	Northern Ireland	34.6%	34.4%	32.6%	35.6%	35.1%
	Wales	24.5%	24.4%	25.2%	25.5%	26.7%
	UK	26.6%	28.0%	27.1%	28.5%	29.6%

R.11 Placed 18 year old applicants by region of domicile: 13 days after A level results day

Placed 18 year old applicants: entry rates (indexed to 100 = England)



R.12 Placed 18 year old applicants by region of domicile: 13 days after A level results day

Placed 18 year old applicants: entry rate (indexed to 100 = England)

Applicant Status	Domicile	2010	2011	2012	2013	2014
Placed	North East	88	89	87	90	86
	North West	102	103	104	101	101
	Yorkshire and The Humber	90	90	92	93	95
	East Midlands	94	92	91	92	91
	West Midlands	93	93	94	95	96
	East of England	103	102	100	100	100
	London	117	119	119	122	124
	South East	106	103	104	103	102
	South West	90	91	88	88	87
	(England total)	100	100	100	100	100