

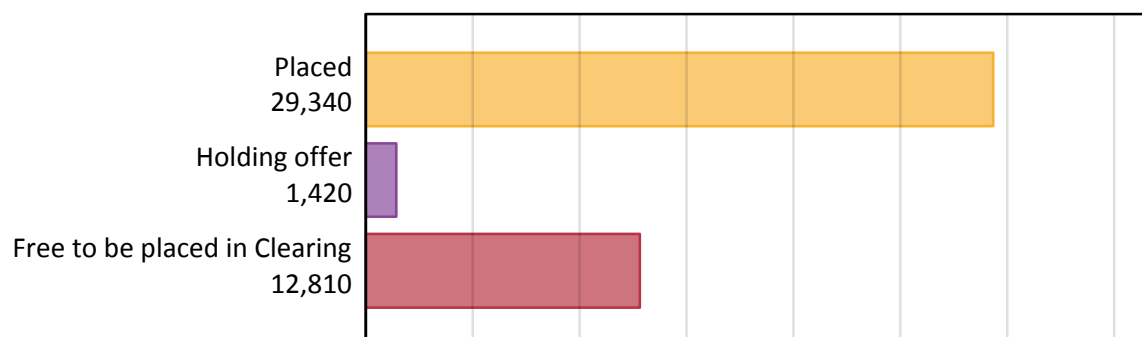
Daily Clearing Analysis: Overview

Analysis at 00:05 on Thursday 28 August 2014 (14 days after A level results day)

A.1 Applicants by type and status from Scotland, 2014 cycle

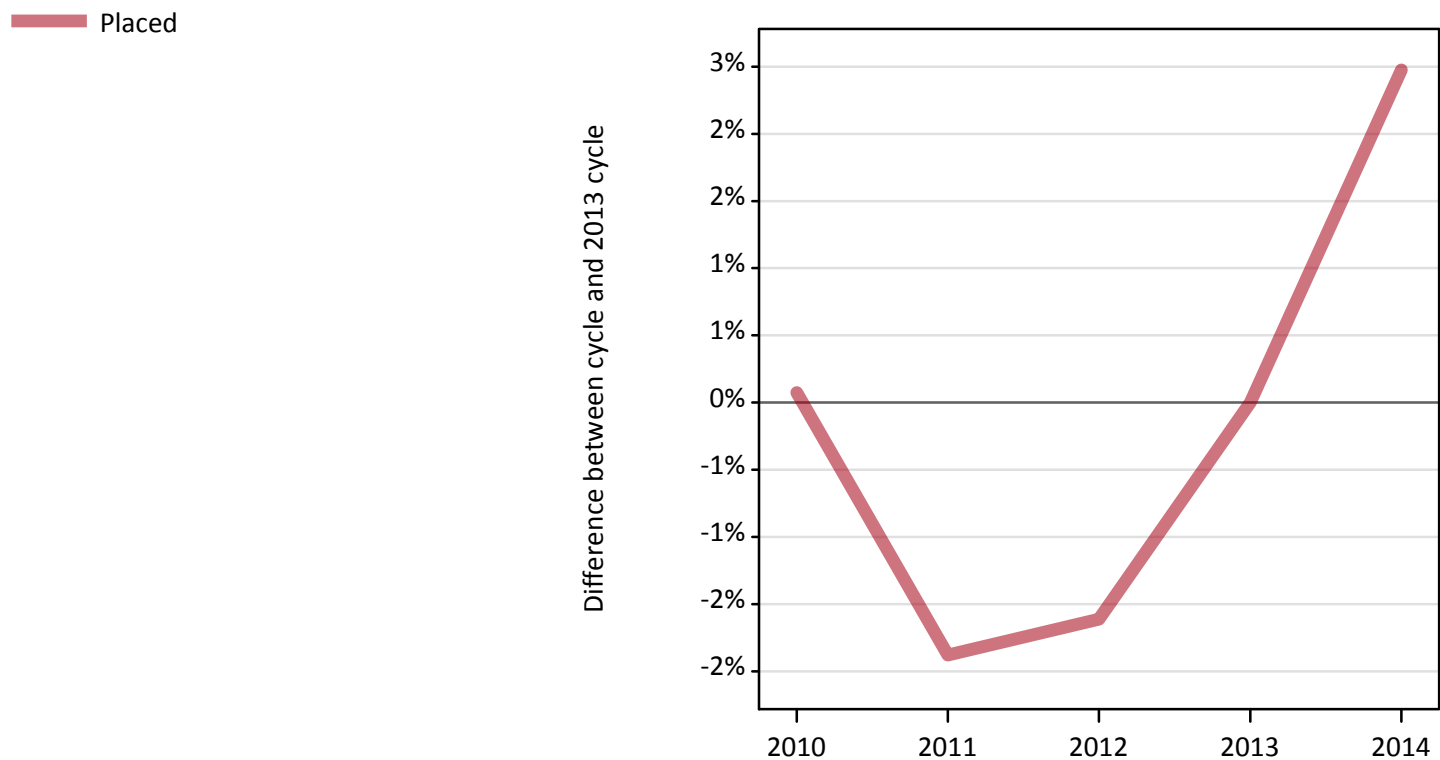
Applicant type	Status	2014
Main scheme	Placed (Clearing)	950
	Placed (Adjustment)	10
	Placed (Firm)	26,320
	Placed (Insurance)	1,420
	Placed (Other)	520
	Holding offer	1,420
	Free to be placed in Clearing	12,810
Direct to Clearing	Placed (Direct to Clearing)	130
	Other (Direct to Clearing)	260
All applicants	Placed	29,340

A.2 Summary of applicants who are placed, holding offers or free to be placed in Clearing (Scotland)



A.3 All placed applicants from Scotland: 14 days after A level results day

All placed applicants: difference between cycle and 2013 cycle



A.4 All placed applicants from Scotland: 14 days after A level results day

All placed applicants: applicants at 14 days after A level results day

Applicant type	Status	2010	2011	2012	2013	2014
All applicants	Placed	28,660	28,100	28,170	28,640	29,340

A.5 All placed applicants from Scotland: 14 days after A level results day

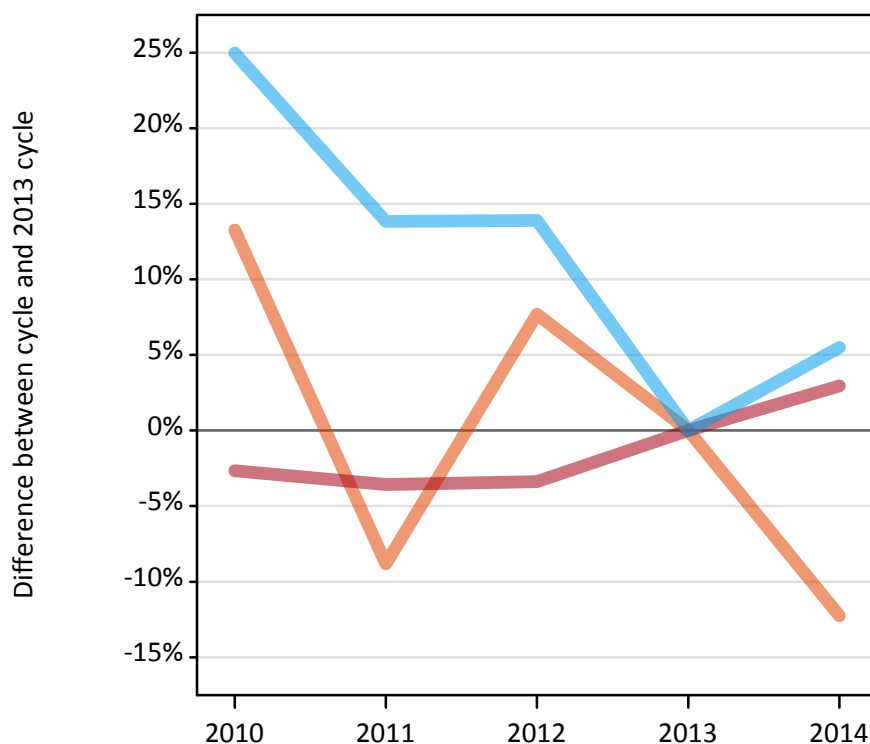
All placed applicants: difference between cycle and 2013 cycle

Applicant type	Status	2010	2011	2012	2013	2014
All applicants	Placed	0%	-2%	-2%	0%	2%

A.6 Placed main scheme applicants from Scotland: 14 days after A level results day

Selected placed routes: difference between cycle and 2013 cycle

Placed (Clearing)
Placed (Firm)
Placed (Insurance)



A.7 Placed main scheme applicants from Scotland: 14 days after A level results day

All Main scheme placed routes (excluding Adjustment): applicants at 14 days after A level results day

Applicant type	Status	2010	2011	2012	2013	2014
Main scheme	Placed (Clearing)	1,220	980	1,160	1,080	950
	Placed (Firm)	24,880	24,650	24,700	25,560	26,320
	Placed (Insurance)	1,680	1,530	1,530	1,350	1,420
	Placed (Other)	740	800	620	490	520

A.8 Placed main scheme applicants from Scotland: 14 days after A level results day

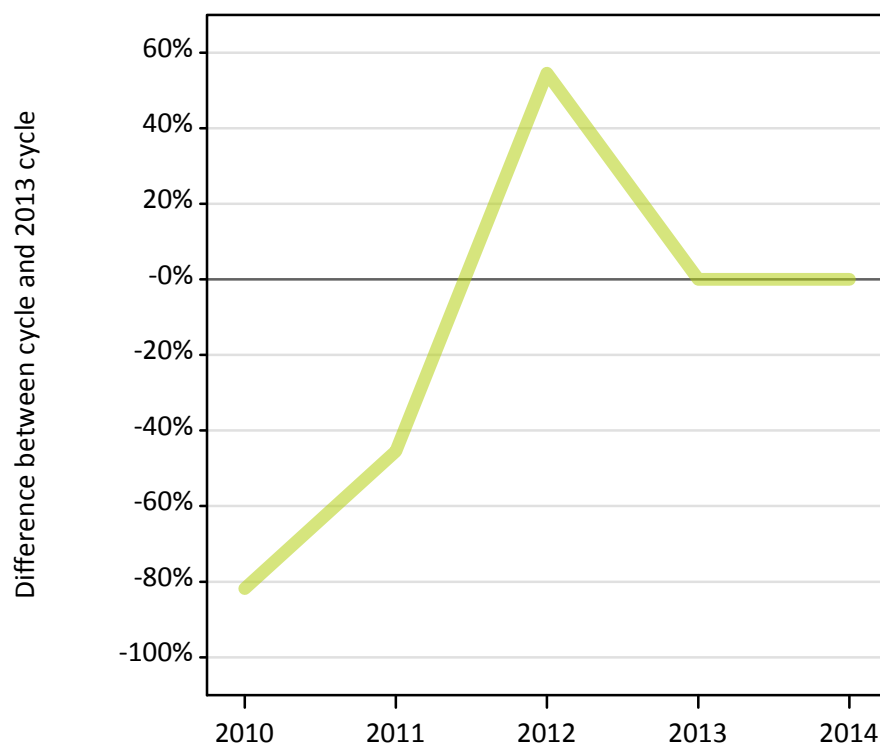
Selected placed routes: difference between cycle and 2013 cycle

Applicant type	Status	2010	2011	2012	2013	2014
Main scheme	Placed (Clearing)	13%	-9%	8%	0%	-12%
	Placed (Firm)	-3%	-4%	-3%	0%	3%
	Placed (Insurance)	25%	14%	14%	0%	6%

A.9 Main scheme applicants placed through adjustment: 14 days after A level results day

Placed through adjustment: difference between cycle and 2013 cycle

Placed (Adjustment)



A.10 Main scheme applicants placed through adjustment: 14 days after A level results day

Placed through adjustment: applicants at 14 days after A level results day

Applicant type	Status	2010	2011	2012	2013	2014
Main scheme	Placed (Adjustment)	0	10	20	10	10

A.11 Main scheme applicants placed through adjustment: 14 days after A level results day

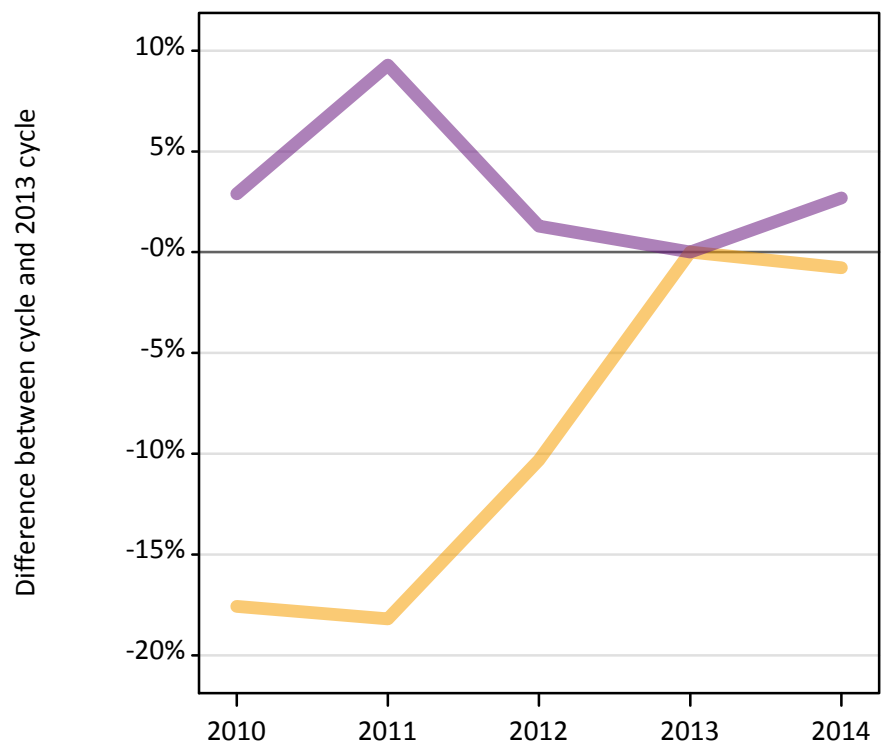
Placed through adjustment: difference between cycle and 2013 cycle

Applicant type	Status	2010	2011	2012	2013	2014
Main scheme	Placed (Adjustment)	-82%	-45%	55%	0%	0%

A.12 Main scheme applicants not currently placed from Scotland: 14 days after A level results day

Applicants in unplaced states: difference between cycle and 2013 cycle

Holding offer
Free to be placed in Clearing



A.13 Main scheme applicants not currently placed from Scotland: 14 days after A level results day

Applicants in unplaced states: applicants at 14 days after A level results day

Applicant type	Status	2010	2011	2012	2013	2014
Main scheme	Holding offer	1,180	1,170	1,290	1,430	1,420
	Free to be placed in Clearing	12,830	13,630	12,630	12,470	12,810

A.14 Main scheme applicants not currently placed from Scotland: 14 days after A level results day

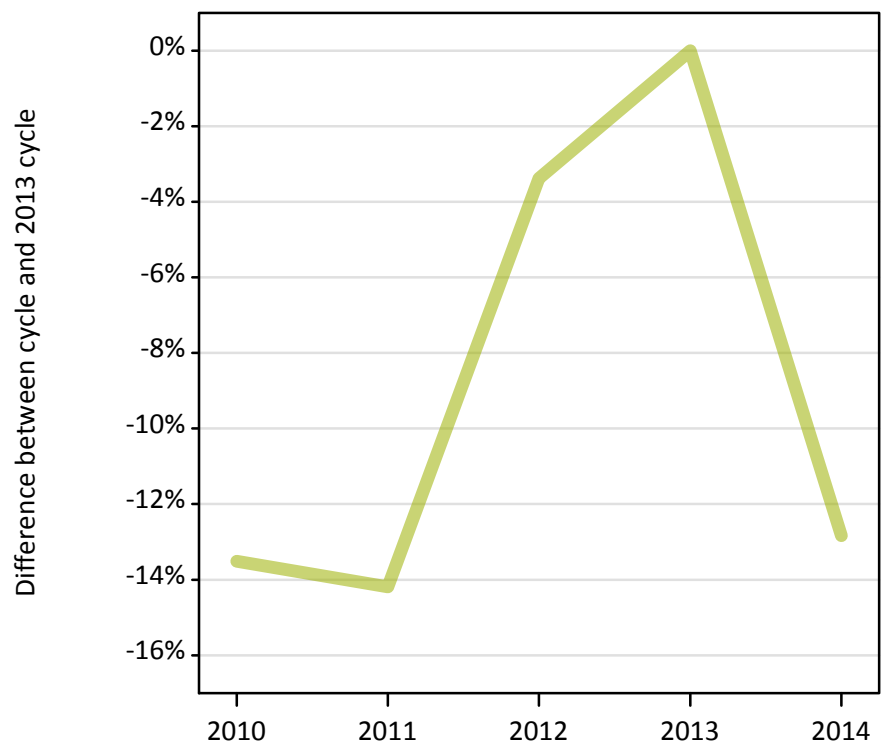
Applicants in unplaced states: difference between cycle and 2013 cycle

Applicant type	Status	2010	2011	2012	2013	2014
Main scheme	Holding offer	-18%	-18%	-10%	0%	-1%
	Free to be placed in Clearing	3%	9%	1%	0%	3%

A.15 Direct to Clearing applicants from Scotland: 14 days after A level results day

Placed (Direct to Clearing): difference between cycle and 2013 cycle

Placed (Direct to Clearing)



A.16 Direct to Clearing applicants from Scotland: 14 days after A level results day

Direct to Clearing 14 days after A level results day

Applicant type	Status	2010	2011	2012	2013	2014
Direct to Clearing	Placed (Direct to Clearing)	130	130	140	150	130
	Other (Direct to Clearing)	350	240	270	280	260

A.17 Direct to Clearing applicants from Scotland: 14 days after A level results day

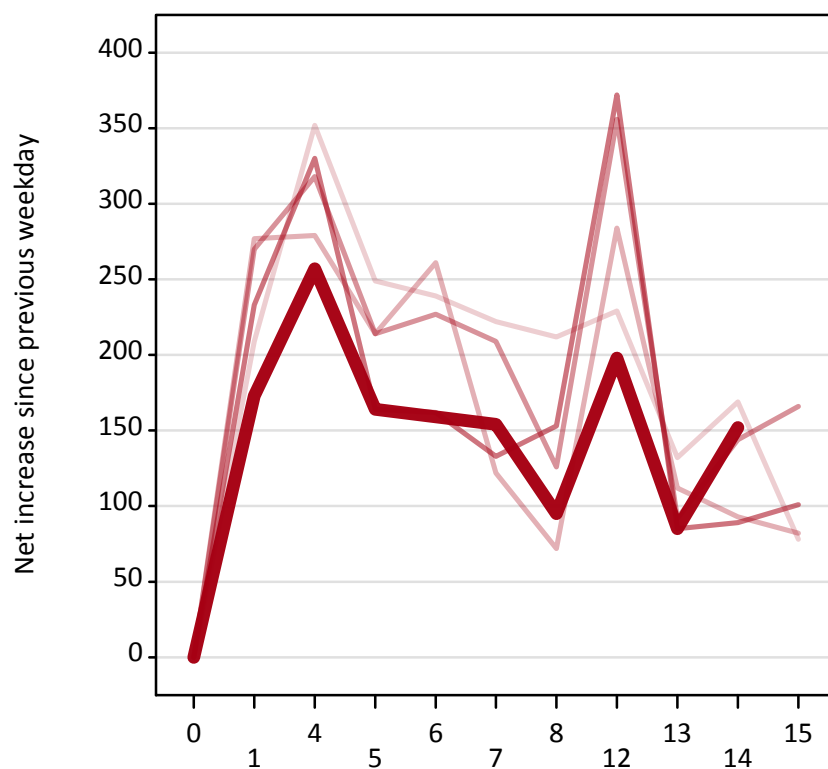
Placed (Direct to Clearing): difference between cycle and 2013 cycle

Applicant type	Status	2010	2011	2012	2013	2014
Direct to Clearing	Placed (Direct to Clearing)	-14%	-14%	-3%	0%	-13%

A.18 All Placed: Daily net change (from Scotland)

Net increase since previous weekday (2014 cycle up to 14 days after A level results day)

— 2010
— 2011
— 2012
— 2013
— 2014



A.19 All Placed: Daily net change (from Scotland)

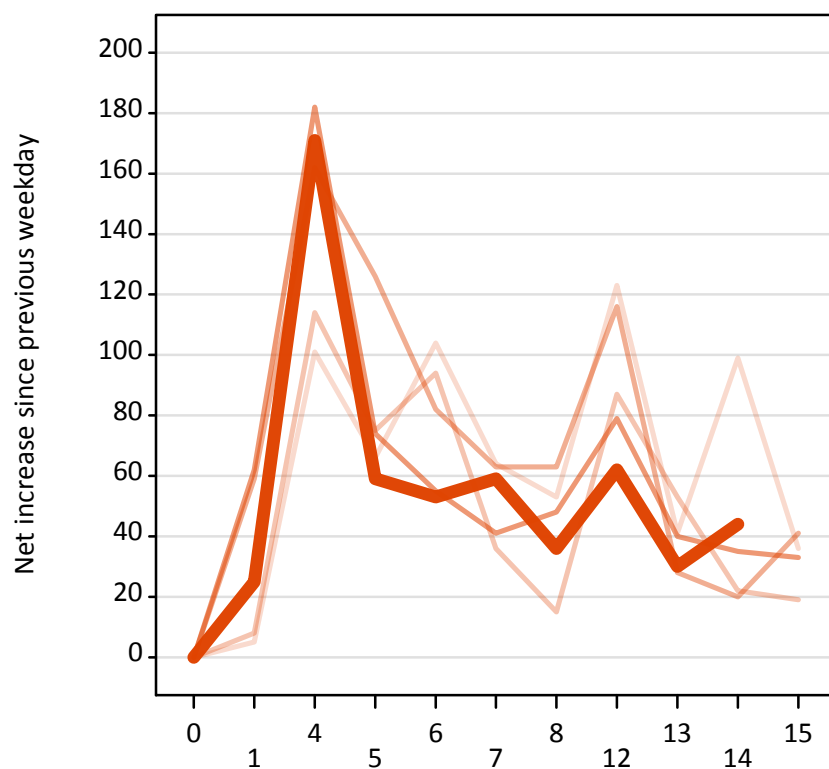
Net increase since previous weekday (2014 cycle up to 14 days after A level results day)

Applicant status, days since A level results day		2010	2011	2012	2013	2014
All Placed	0	0	0	0	0	0
	1	210	280	270	230	170
	4	350	280	320	330	260
	5	250	210	210	160	160
	6	240	260	230	160	160
	7	220	120	210	130	150
	8	210	70	130	150	100
	12	230	280	360	370	200
	13	130	110	90	90	90
	14	170	90	140	90	150
	15	80	80	170	100	

A.20 Placed through Clearing only: Daily net change (from Scotland)

Net increase since previous weekday (2014 cycle up to 14 days after A level results day)

— 2010
— 2011
— 2012
— 2013
— 2014

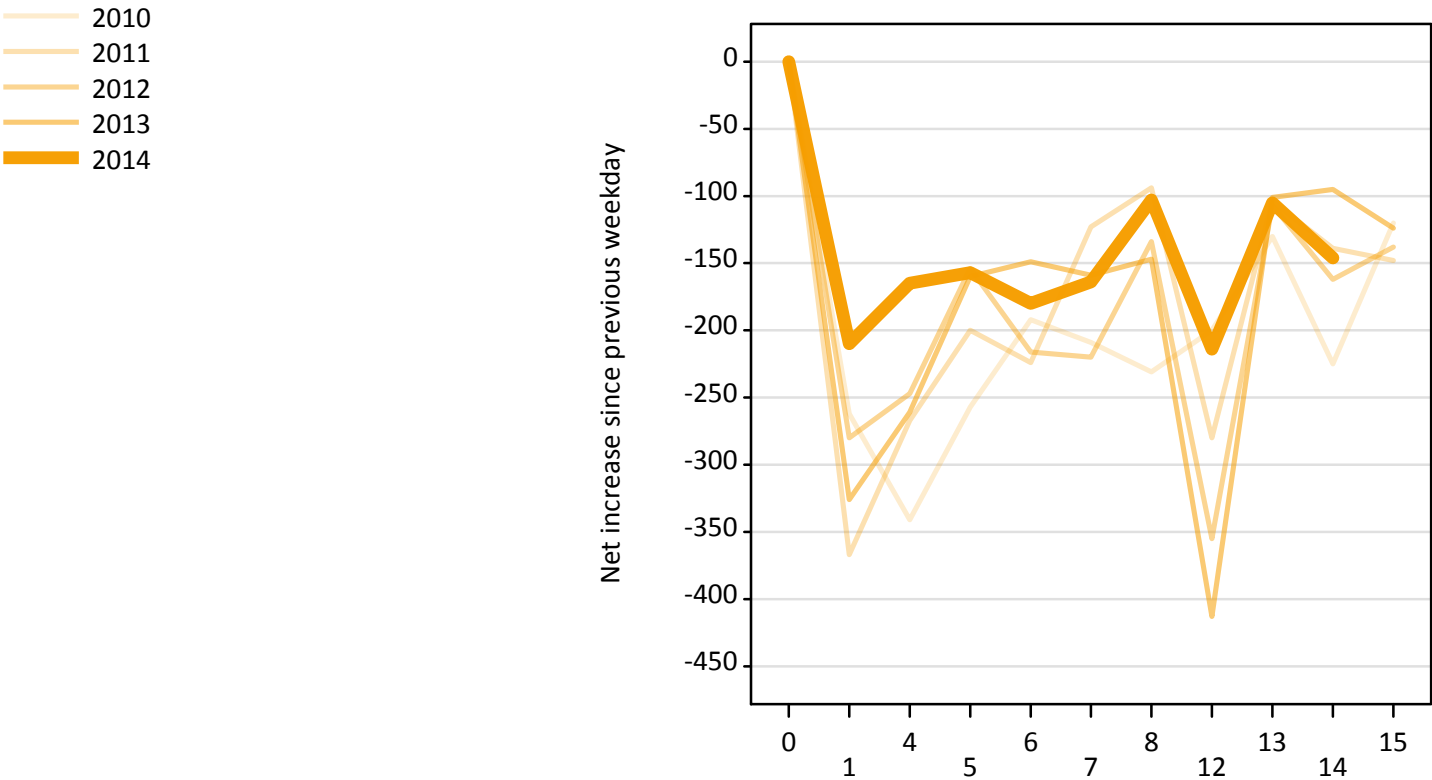


A.21 Placed through Clearing only: Daily net change (from Scotland)

Net increase since previous weekday (2014 cycle up to 14 days after A level results day)

Applicant status, days since A level results day		2010	2011	2012	2013	2014
Placed through Clearing only	0	0	0	0	0	0
	1	10	10	60	60	30
	4	100	110	160	180	170
	5	70	80	130	70	60
	6	100	90	80	60	50
	7	60	40	60	40	60
	8	50	20	60	50	40
	12	120	90	120	80	60
	13	40	50	30	40	30
	14	100	20	20	40	40
	15	40	20	40	30	

A.22 Holding Offer: Daily net change (from Scotland)
 Net increase since previous weekday (2014 cycle up to 14 days after A level results day)

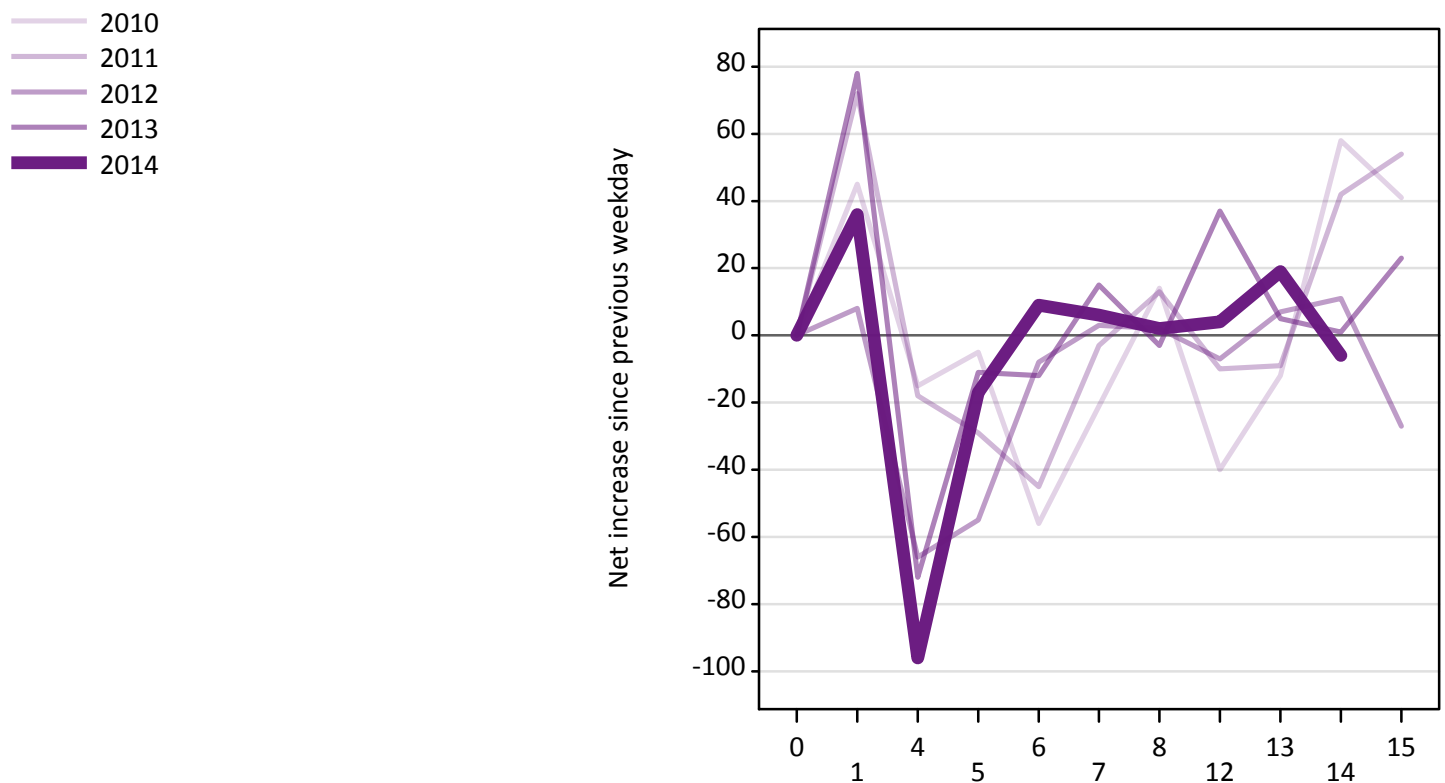


A.23 Holding Offer: Daily net change (from Scotland)
 Net increase since previous weekday (2014 cycle up to 14 days after A level results day)

Applicant status, days since A level results day		2010	2011	2012	2013	2014
Holding Offer	0	0	0	0	0	0
	1	-260	-370	-280	-330	-210
	4	-340	-270	-250	-260	-170
	5	-260	-200	-150	-160	-160
	6	-190	-220	-220	-150	-180
	7	-210	-120	-220	-160	-160
	8	-230	-90	-130	-150	-100
	12	-200	-280	-360	-410	-210
	13	-130	-100	-110	-100	-110
	14	-230	-140	-160	-100	-150
	15	-120	-150	-140	-120	

A.24 Free to be placed in Clearing: Daily net change (from Scotland)

Net increase since previous weekday (2014 cycle up to 14 days after A level results day)



A.25 Free to be placed in Clearing: Daily net change (from Scotland)

Net increase since previous weekday (2014 cycle up to 14 days after A level results day)

Applicant status, days since A level results day		2010	2011	2012	2013	2014
Free to be placed in Clearing	0	0	0	0	0	0
	1	50	70	10	80	40
	4	-20	-20	-70	-70	-100
	5	-10	-30	-60	-10	-20
	6	-60	-50	-10	-10	10
	7	-20	0	0	20	10
	8	10	10	0	0	0
	12	-40	-10	-10	40	0
	13	-10	-10	10	10	20
	14	60	40	10	0	-10
	15	40	50	-30	20	