

Daily Clearing Analysis: POLAR2

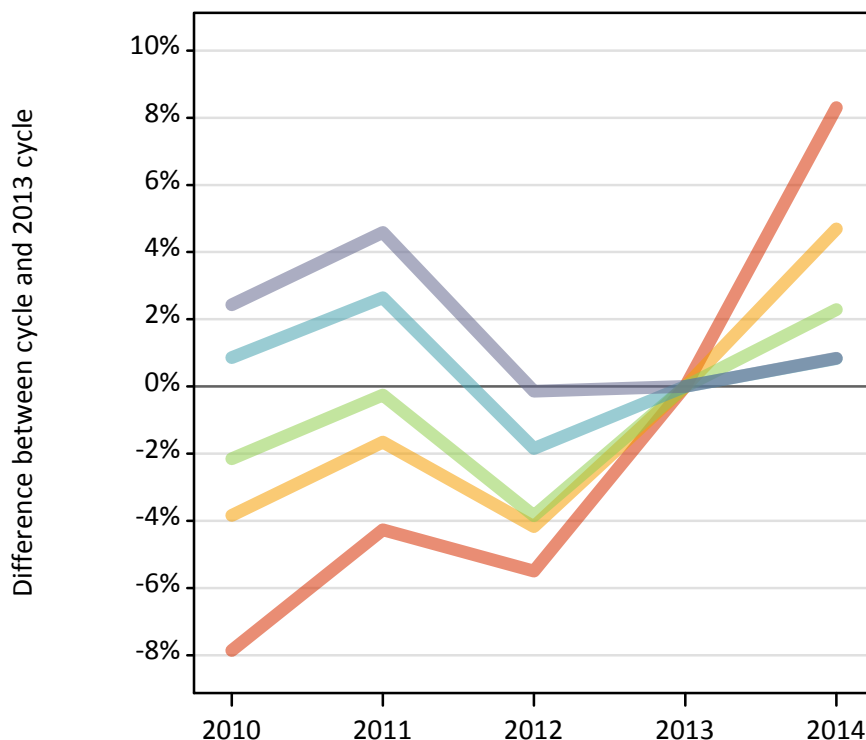
UCAS

Analysis at 00:05 on Thursday 28 August 2014 (14 days after A level results day)

P.1 Placed 18 year old applicants from England by POLAR2 quintile: 14 days after A level results day

Placed 18 year old applicants: change relative to 2013 cycle totals

■ Quintile 1
■ Quintile 2
■ Quintile 3
■ Quintile 4
■ Quintile 5



P.2 Placed 18 year old applicants from England by POLAR2 quintile: 14 days after A level results day

Applicant Status		POLAR2	2010	2011	2012	2013	2014
Placed	Quintile 1		18,630	19,350	19,100	20,210	21,890
	Quintile 2		27,280	27,900	27,180	28,370	29,700
	Quintile 3		33,910	34,570	33,320	34,660	35,450
	Quintile 4		42,590	43,350	41,450	42,230	42,590
	Quintile 5		53,400	54,520	52,060	52,130	52,570

P.3 Placed 18 year old applicants from England by POLAR2 quintile: 14 days after A level results day

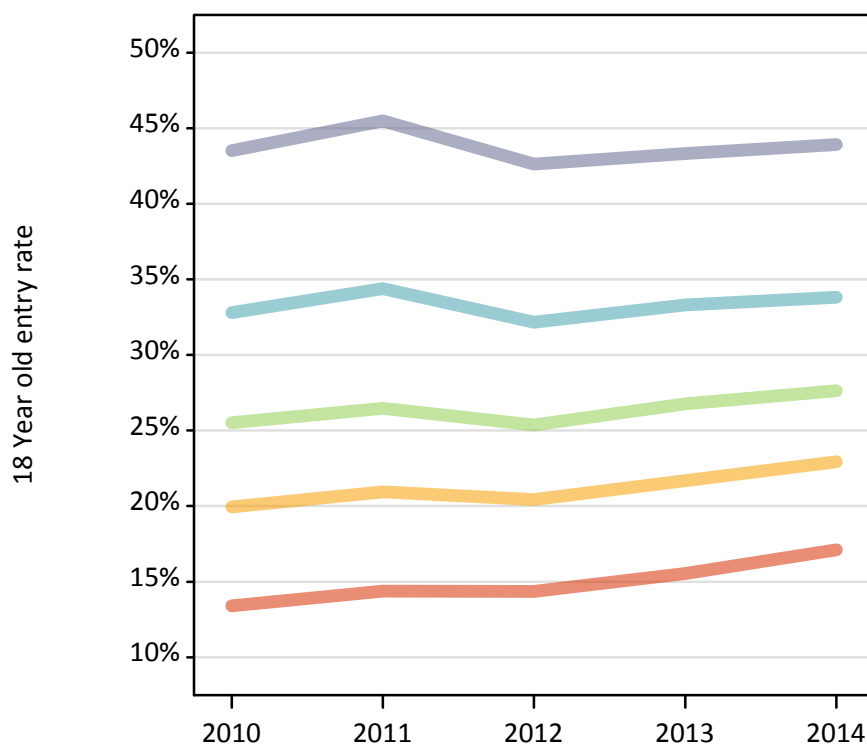
Placed 18 year old applicants: change relative to 2013 cycle totals

Applicant Status		POLAR2	2010	2011	2012	2013	2014
Placed	Quintile 1		-8%	-4%	-6%	0%	8%
	Quintile 2		-4%	-2%	-4%	0%	5%
	Quintile 3		-2%	-0%	-4%	0%	2%
	Quintile 4		1%	3%	-2%	0%	1%
	Quintile 5		2%	5%	-0%	0%	1%

P.4 Placed 18 year old applicants from England by POLAR2 quintile: 14 days after A level results day

Placed 18 year old applicants: entry rate

— Quintile 1
— Quintile 2
— Quintile 3
— Quintile 4
— Quintile 5



P.5 Placed 18 year old applicants from England by POLAR2 quintile: 14 days after A level results day

Placed 18 year old applicants: entry rate

Applicant Status	POLAR2	2010	2011	2012	2013	2014
Placed	Quintile 1	13.4%	14.4%	14.4%	15.5%	17.1%
	Quintile 2	20.0%	20.9%	20.4%	21.7%	22.9%
	Quintile 3	25.5%	26.5%	25.4%	26.8%	27.6%
	Quintile 4	32.8%	34.4%	32.2%	33.3%	33.8%
	Quintile 5	43.5%	45.5%	42.6%	43.3%	43.9%

P.6 Placed 18 year old applicants from England by POLAR2 quintile: 14 days after A level results day

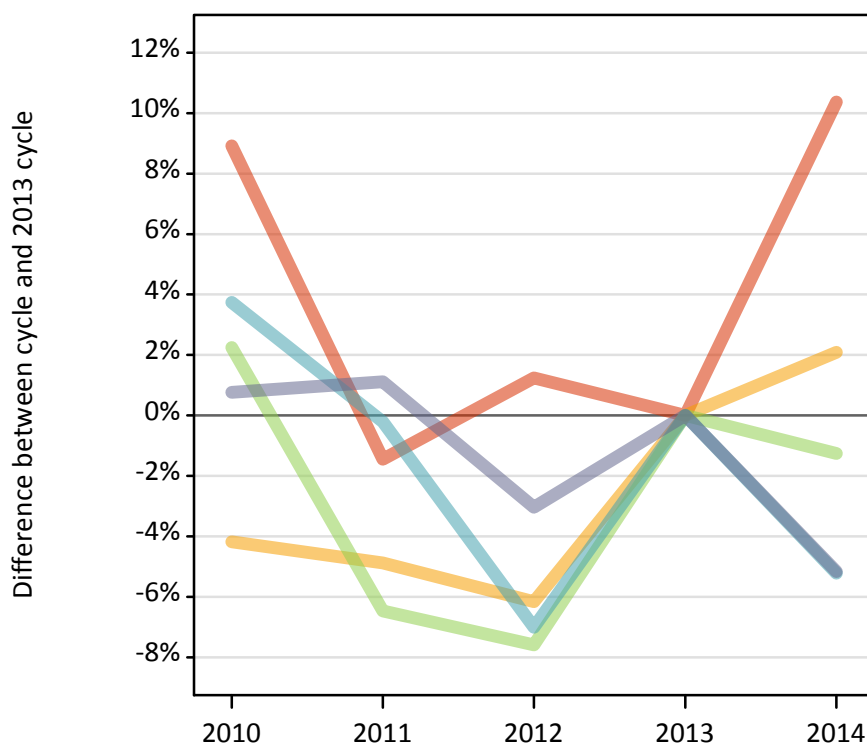
Placed 18 year old applicants: entry rate (indexed to 100 = Quintile 1)

Applicant Status	POLAR2	2010	2011	2012	2013	2014
Placed	Quintile 1	100	100	100	100	100
	Quintile 2	149	146	142	140	134
	Quintile 3	190	184	177	172	162
	Quintile 4	245	239	224	214	198
	Quintile 5	324	316	297	279	257

P.7 Placed 18 year old applicants from Northern Ireland by POLAR2 quintile: 14 days after A level results day

Placed 18 year old applicants: change relative to 2013 cycle totals

Quintile 1
 Quintile 2
 Quintile 3
 Quintile 4
 Quintile 5



P.8 Placed 18 year old applicants from Northern Ireland by POLAR2 quintile: 14 days after A level results day

Applicant Status	POLAR2	2010	2011	2012	2013	2014
Placed	Quintile 1	530	480	490	480	530
	Quintile 2	820	820	810	860	880
	Quintile 3	1,550	1,420	1,400	1,510	1,500
	Quintile 4	3,020	2,910	2,710	2,910	2,760
	Quintile 5	2,890	2,900	2,780	2,860	2,720

P.9 Placed 18 year old applicants from Northern Ireland by POLAR2 quintile: 14 days after A level results day

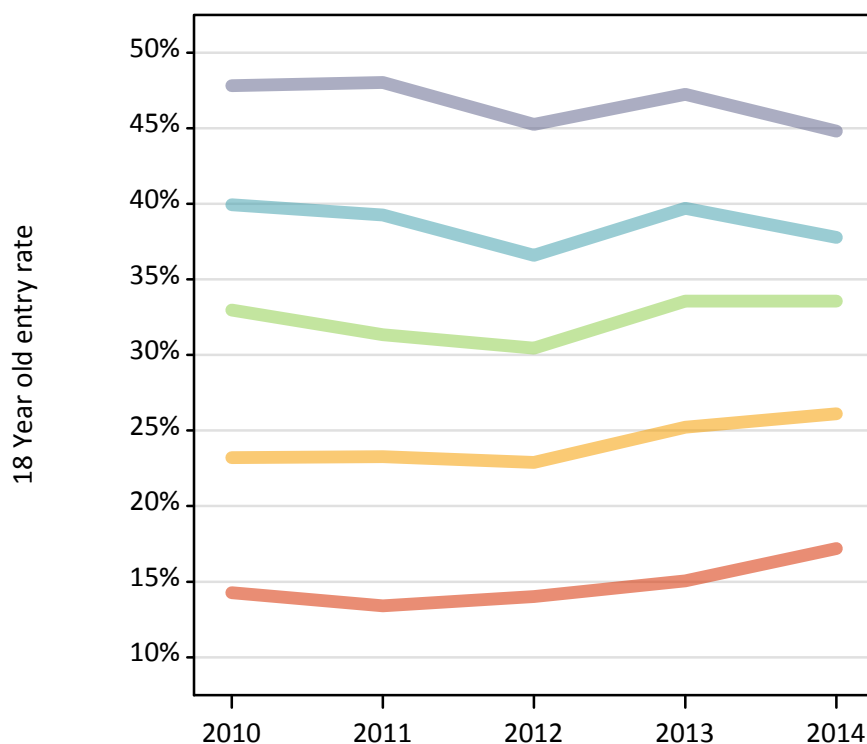
Placed 18 year old applicants: change relative to 2013 cycle totals

Applicant Status	POLAR2	2010	2011	2012	2013	2014
Placed	Quintile 1	9%	-1%	1%	0%	10%
	Quintile 2	-4%	-5%	-6%	0%	2%
	Quintile 3	2%	-6%	-8%	0%	-1%
	Quintile 4	4%	-0%	-7%	0%	-5%
	Quintile 5	1%	1%	-3%	0%	-5%

P.10 Placed 18 year old applicants from Northern Ireland by POLAR2 quintile: 14 days after A level results day

Placed 18 year old applicants: entry rate

Quintile 1
 Quintile 2
 Quintile 3
 Quintile 4
 Quintile 5



P.11 Placed 18 year old applicants from Northern Ireland by POLAR2 quintile: 14 days after A level results day

Placed 18 year old applicants: entry rate

Applicant Status	POLAR2	2010	2011	2012	2013	2014
Placed	Quintile 1	14.3%	13.4%	14.0%	15.1%	17.2%
	Quintile 2	23.2%	23.3%	22.9%	25.2%	26.1%
	Quintile 3	33.0%	31.3%	30.4%	33.6%	33.6%
	Quintile 4	39.9%	39.3%	36.6%	39.7%	37.8%
	Quintile 5	47.8%	48.0%	45.3%	47.2%	44.8%

P.12 Placed 18 year old applicants from Northern Ireland by POLAR2 quintile: 14 days after A level results day

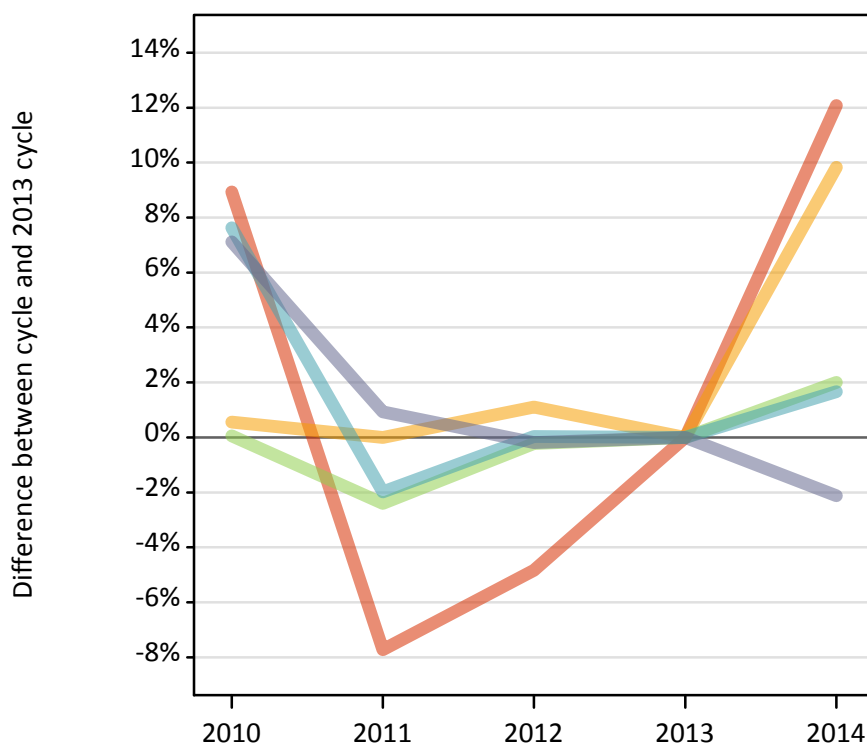
Placed 18 year old applicants: entry rate (indexed to 100 = Quintile 1)

Applicant Status	POLAR2	2010	2011	2012	2013	2014
Placed	Quintile 1	100	100	100	100	100
	Quintile 2	163	174	163	167	152
	Quintile 3	231	234	217	223	195
	Quintile 4	280	293	261	264	220
	Quintile 5	335	358	323	314	261

P.13 Placed 18 year old applicants from Scotland by POLAR2 quintile: 14 days after A level results day

Placed 18 year old applicants: change relative to 2013 cycle totals

Quintile 1
 Quintile 2
 Quintile 3
 Quintile 4
 Quintile 5



P.14 Placed 18 year old applicants from Scotland by POLAR2 quintile: 14 days after A level results day

Applicant Status	POLAR2	2010	2011	2012	2013	2014
Placed	Quintile 1	450	380	390	410	460
	Quintile 2	910	910	920	910	1,000
	Quintile 3	1,750	1,710	1,750	1,750	1,790
	Quintile 4	3,420	3,110	3,180	3,180	3,230
	Quintile 5	8,150	7,680	7,590	7,610	7,450

P.15 Placed 18 year old applicants from Scotland by POLAR2 quintile: 14 days after A level results day

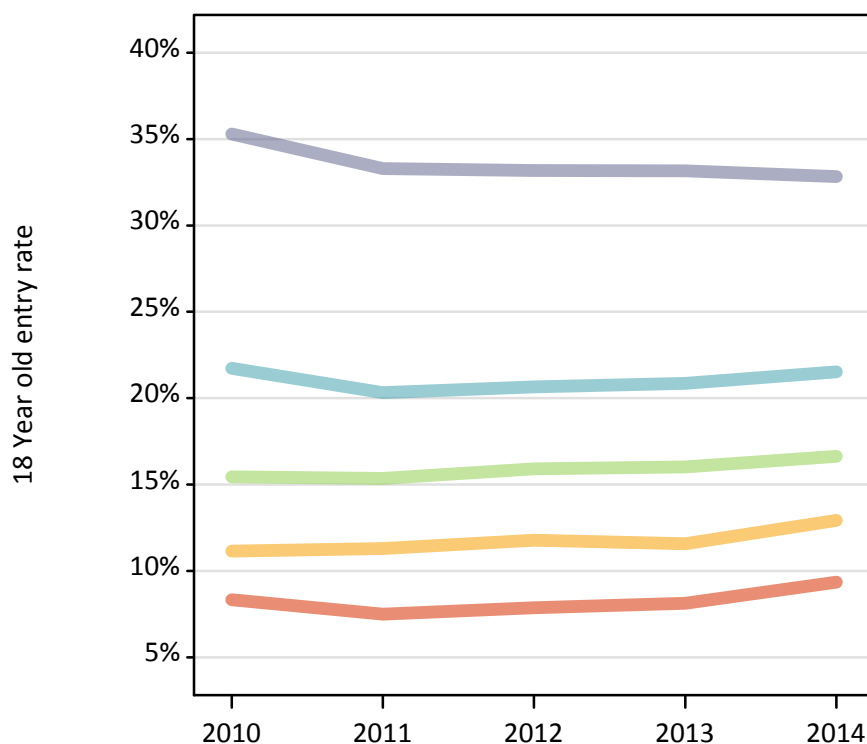
Placed 18 year old applicants: change relative to 2013 cycle totals

Applicant Status	POLAR2	2010	2011	2012	2013	2014
Placed	Quintile 1	9%	-8%	-5%	0%	12%
	Quintile 2	1%	0%	1%	0%	10%
	Quintile 3	0%	-2%	-0%	0%	2%
	Quintile 4	8%	-2%	0%	0%	2%
	Quintile 5	7%	1%	-0%	0%	-2%

P.16 Placed 18 year old applicants from Scotland by POLAR2 quintile: 14 days after A level results day

Placed 18 year old applicants: entry rate

■ Quintile 1
■ Quintile 2
■ Quintile 3
■ Quintile 4
■ Quintile 5



P.17 Placed 18 year old applicants from Scotland by POLAR2 quintile: 14 days after A level results day

Placed 18 year old applicants: entry rate

Applicant Status	POLAR2	2010	2011	2012	2013	2014
Placed	Quintile 1	8.3%	7.5%	7.9%	8.1%	9.3%
	Quintile 2	11.1%	11.3%	11.8%	11.6%	12.9%
	Quintile 3	15.4%	15.3%	15.9%	16.0%	16.6%
	Quintile 4	21.7%	20.3%	20.6%	20.9%	21.5%
	Quintile 5	35.3%	33.3%	33.2%	33.2%	32.8%

P.18 Placed 18 year old applicants from Scotland by POLAR2 quintile: 14 days after A level results day

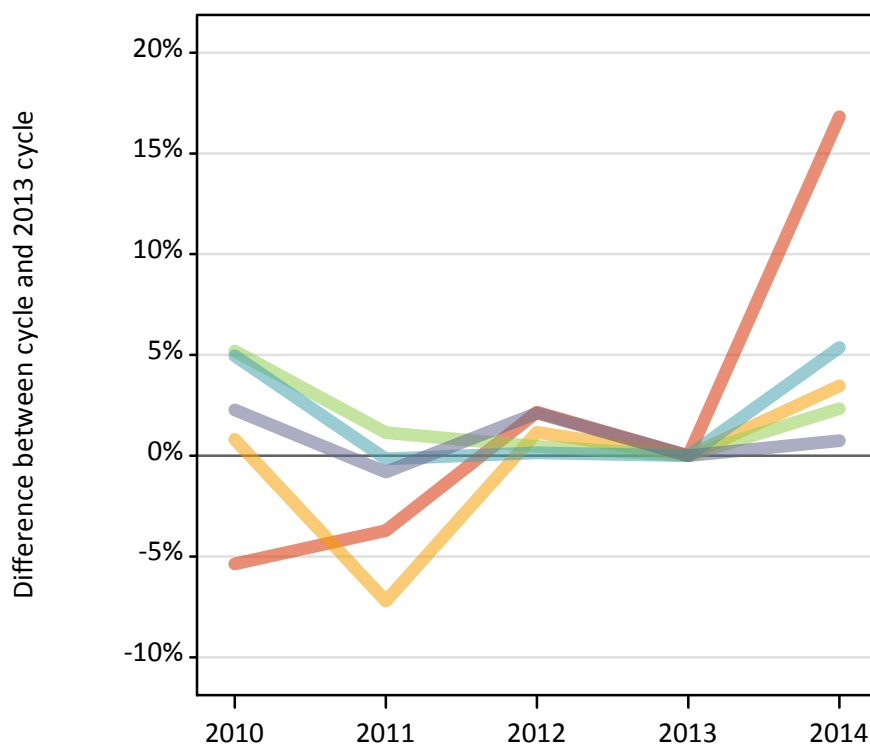
Placed 18 year old applicants: entry rate (indexed to 100 = Quintile 1)

Applicant Status	POLAR2	2010	2011	2012	2013	2014
Placed	Quintile 1	100	100	100	100	100
	Quintile 2	134	151	150	142	138
	Quintile 3	185	205	202	197	178
	Quintile 4	261	271	262	256	230
	Quintile 5	423	444	422	408	351

P.19 Placed 18 year old applicants from Wales by POLAR2 quintile: 14 days after A level results day

Placed 18 year old applicants: change relative to 2013 cycle totals

Quintile 1
 Quintile 2
 Quintile 3
 Quintile 4
 Quintile 5



P.20 Placed 18 year old applicants from Wales by POLAR2 quintile: 14 days after A level results day

Applicant Status	POLAR2	2010	2011	2012	2013	2014
Placed	Quintile 1	920	930	990	970	1,130
	Quintile 2	1,750	1,610	1,750	1,730	1,790
	Quintile 3	1,840	1,770	1,760	1,750	1,790
	Quintile 4	2,070	1,970	1,980	1,980	2,080
	Quintile 5	3,150	3,050	3,140	3,080	3,100

P.21 Placed 18 year old applicants from Wales by POLAR2 quintile: 14 days after A level results day

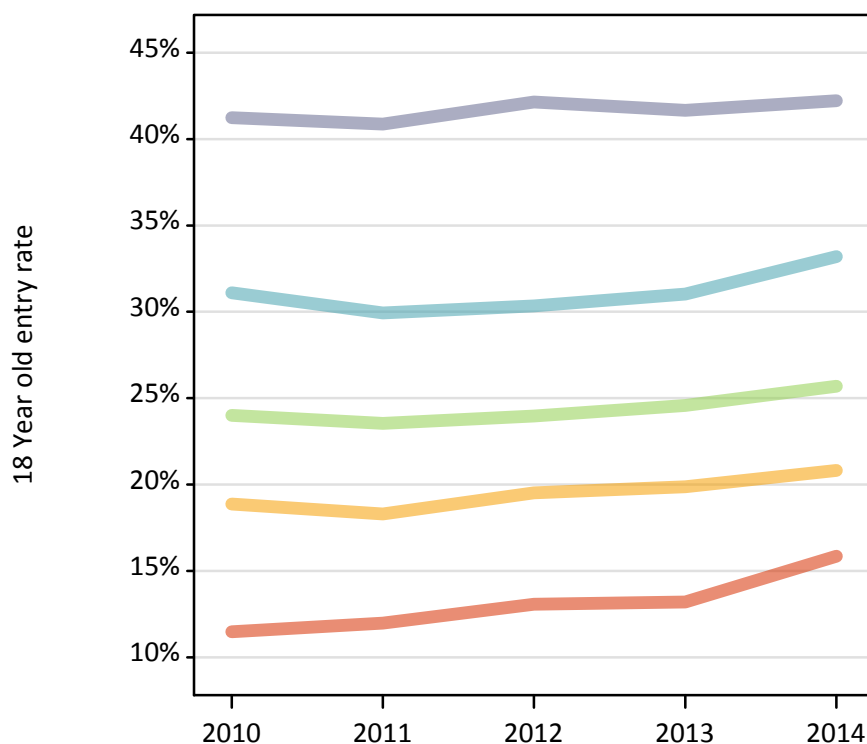
Placed 18 year old applicants: change relative to 2013 cycle totals

Applicant Status	POLAR2	2010	2011	2012	2013	2014
Placed	Quintile 1	-5%	-4%	2%	0%	17%
	Quintile 2	1%	-7%	1%	0%	3%
	Quintile 3	5%	1%	0%	0%	2%
	Quintile 4	5%	-0%	0%	0%	5%
	Quintile 5	2%	-1%	2%	0%	1%

P.22 Placed 18 year old applicants from Wales by POLAR2 quintile: 14 days after A level results day

Placed 18 year old applicants: entry rate

Quintile 1
 Quintile 2
 Quintile 3
 Quintile 4
 Quintile 5



P.23 Placed 18 year old applicants from Wales by POLAR2 quintile: 14 days after A level results day

Placed 18 year old applicants: entry rate

Applicant Status	POLAR2	2010	2011	2012	2013	2014
Placed	Quintile 1	11.5%	12.0%	13.1%	13.2%	15.8%
	Quintile 2	18.9%	18.3%	19.5%	19.9%	20.8%
	Quintile 3	24.0%	23.5%	24.0%	24.6%	25.7%
	Quintile 4	31.1%	29.9%	30.3%	31.0%	33.2%
	Quintile 5	41.2%	40.9%	42.1%	41.7%	42.2%

P.24 Placed 18 year old applicants from Wales by POLAR2 quintile: 14 days after A level results day

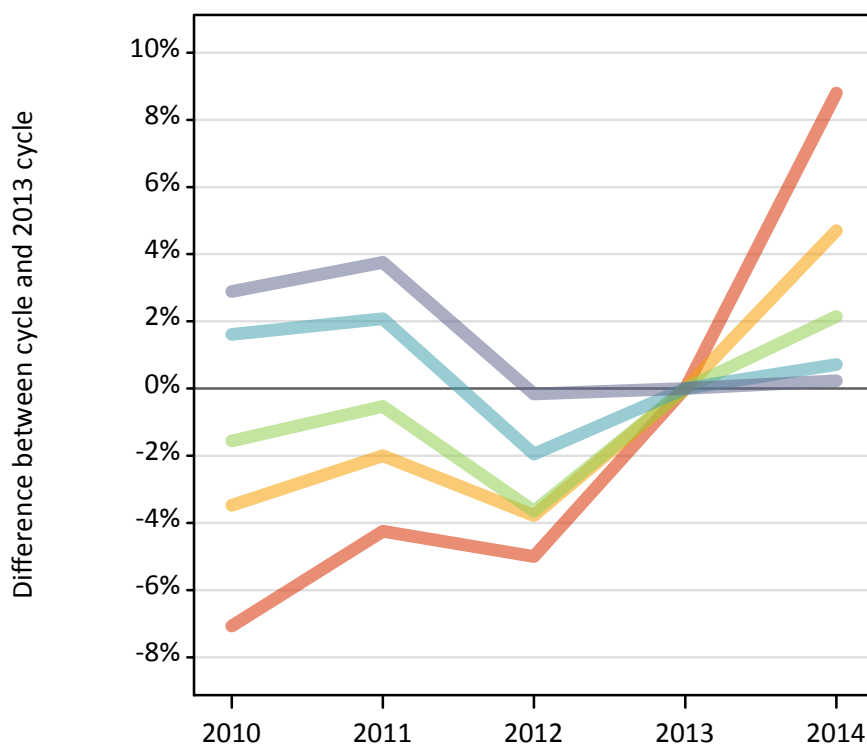
Placed 18 year old applicants: entry rate (indexed to 100 = Quintile 1)

Applicant Status	POLAR2	2010	2011	2012	2013	2014
Placed	Quintile 1	100	100	100	100	100
	Quintile 2	165	153	149	150	131
	Quintile 3	209	197	183	186	162
	Quintile 4	271	250	232	235	210
	Quintile 5	359	341	322	316	266

P.25 Placed 18 year old applicants from the UK by POLAR2 quintile: 14 days after A level results day

Placed 18 year old applicants: change relative to 2013 cycle totals

— Quintile 1
— Quintile 2
— Quintile 3
— Quintile 4
— Quintile 5



P.26 Placed 18 year old applicants from the UK by POLAR2 quintile: 14 days after A level results day

Applicant Status	POLAR2	2010	2011	2012	2013	2014
Placed	Quintile 1	20,520	21,140	20,970	22,080	24,020
	Quintile 2	30,760	31,230	30,660	31,860	33,360
	Quintile 3	39,050	39,460	38,230	39,670	40,520
	Quintile 4	51,110	51,340	49,310	50,290	50,650
	Quintile 5	67,580	68,150	65,570	65,680	65,830

P.27 Placed 18 year old applicants from the UK by POLAR2 quintile: 14 days after A level results day

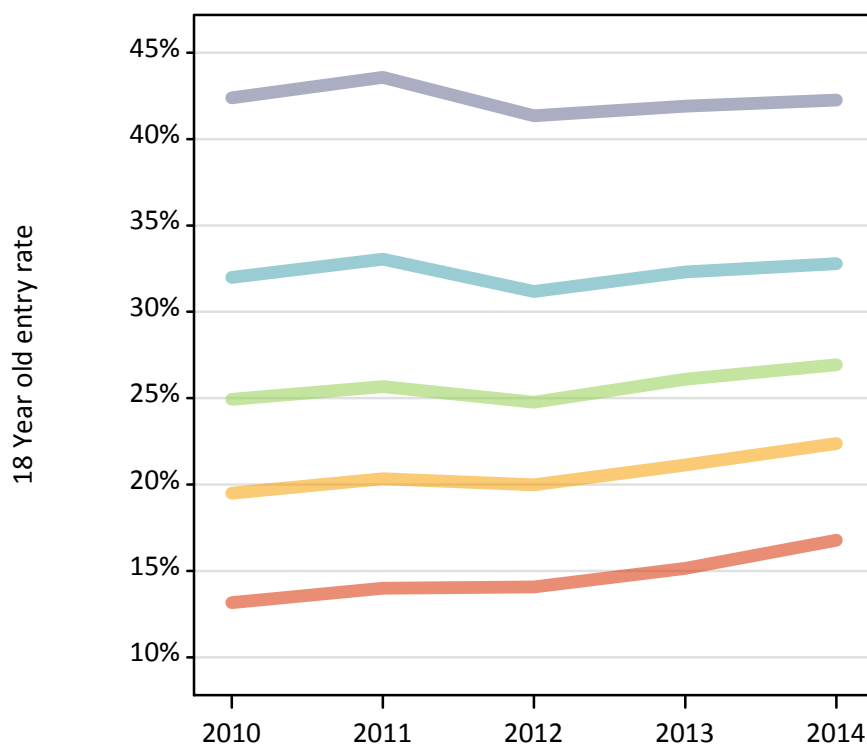
Placed 18 year old applicants: change relative to 2013 cycle totals

Applicant Status	POLAR2	2010	2011	2012	2013	2014
Placed	Quintile 1	-7%	-4%	-5%	0%	9%
	Quintile 2	-3%	-2%	-4%	0%	5%
	Quintile 3	-2%	-1%	-4%	0%	2%
	Quintile 4	2%	2%	-2%	0%	1%
	Quintile 5	3%	4%	-0%	0%	0%

P.28 Placed 18 year old applicants from the UK by POLAR2 quintile: 14 days after A level results day

Placed 18 year old applicants: entry rate

— Quintile 1
— Quintile 2
— Quintile 3
— Quintile 4
— Quintile 5



P.29 Placed 18 year old applicants from the UK by POLAR2 quintile: 14 days after A level results day

Placed 18 year old applicants: entry rate

Applicant Status	POLAR2	2010	2011	2012	2013	2014
Placed	Quintile 1	13.2%	14.0%	14.1%	15.1%	16.8%
	Quintile 2	19.5%	20.3%	20.0%	21.1%	22.4%
	Quintile 3	24.9%	25.7%	24.8%	26.1%	26.9%
	Quintile 4	32.0%	33.1%	31.2%	32.3%	32.8%
	Quintile 5	42.4%	43.6%	41.4%	41.9%	42.3%

P.30 Placed 18 year old applicants from the UK by POLAR2 quintile: 14 days after A level results day

Placed 18 year old applicants: entry rate (indexed to 100 = Quintile 1)

Applicant Status	POLAR2	2010	2011	2012	2013	2014
Placed	Quintile 1	100	100	100	100	100
	Quintile 2	148	145	142	139	133
	Quintile 3	189	183	176	172	161
	Quintile 4	243	236	222	213	196
	Quintile 5	322	311	294	277	252