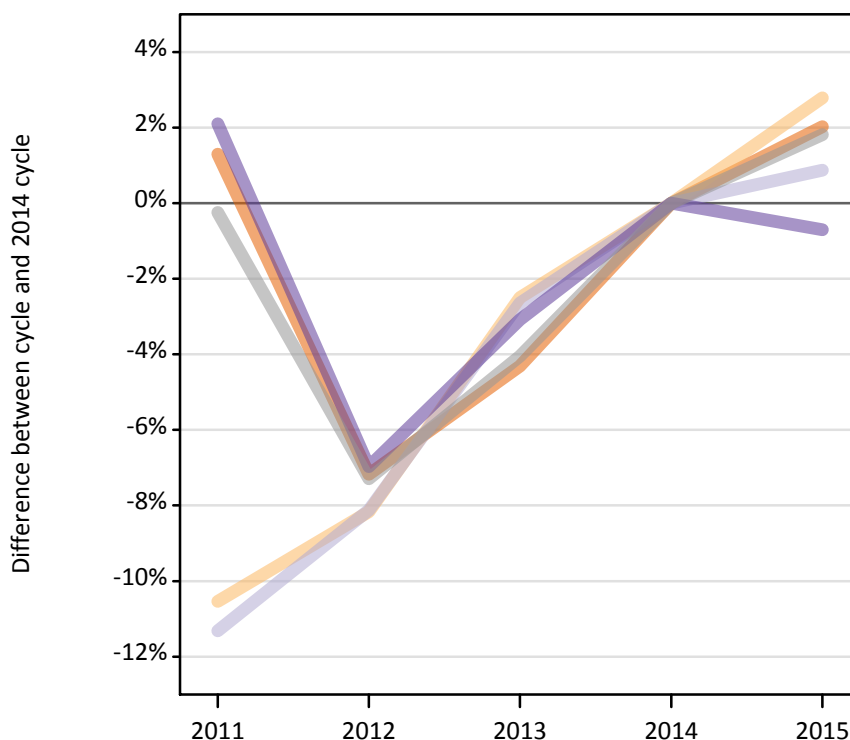
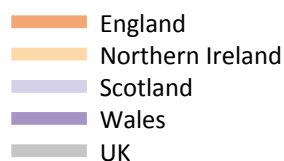


Applications by country and type of institution at the 15 January deadline (No Scot. X1)

DX.5.1 Applications by domicile and country of institution : All domiciles

Difference between cycle and 2014 cycle



DX.5.2 Applications by domicile and country of institution : All domiciles

Domicile of applicant and country of institution		2011	2012	2013	2014	2015
All domiciles	England	2,155,350	1,975,000	2,036,020	2,127,670	2,170,680
	Northern Ireland	54,250	55,690	59,120	60,640	62,330
	Scotland	232,390	240,740	255,110	262,040	264,310
	Wales	100,100	91,200	95,020	98,040	97,350
	UK	2,542,090	2,362,630	2,445,270	2,548,380	2,594,670

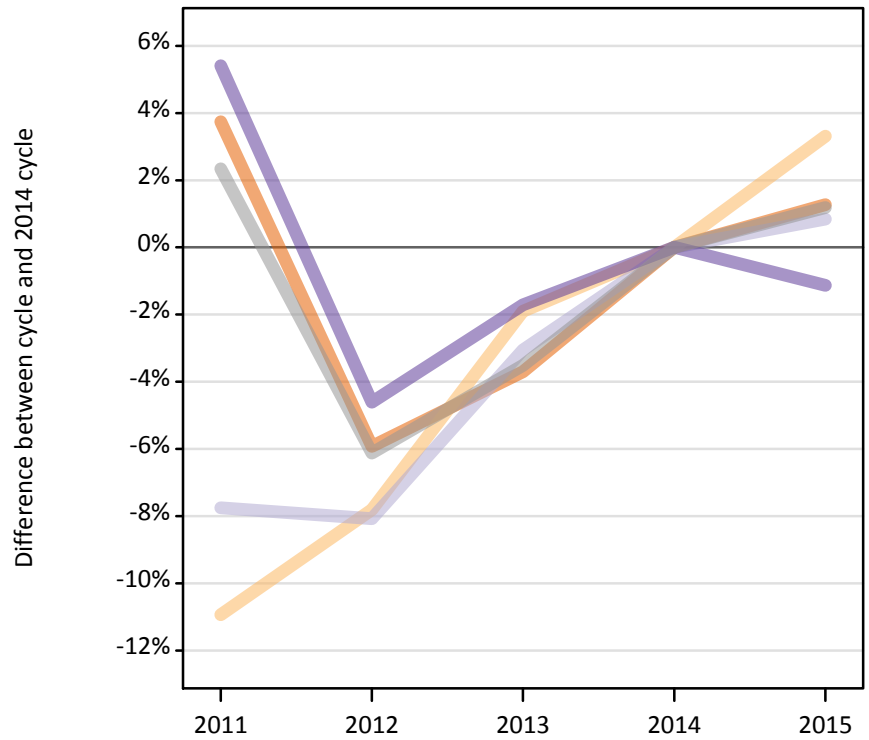
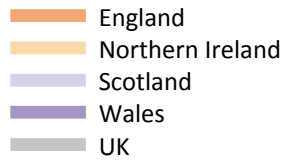
DX.5.3 Applications by domicile and country of institution : All domiciles

Difference between cycle and 2014 cycle

Domicile of applicant and country of institution		2011	2012	2013	2014	2015
All domiciles	England	1%	-7%	-4%	0%	2%
	Northern Ireland	-11%	-8%	-3%	0%	3%
	Scotland	-11%	-8%	-3%	0%	1%
	Wales	2%	-7%	-3%	0%	-1%
	UK	-0%	-7%	-4%	0%	2%

DX.5.4 Applications by domicile and country of institution : UK

Difference between cycle and 2014 cycle



DX.5.5 Applications by domicile and country of institution : UK

Domicile of applicant and country of institution		2011	2012	2013	2014	2015
UK	England	1,869,860	1,695,680	1,735,650	1,802,440	1,825,450
	Northern Ireland	50,040	51,800	55,120	56,190	58,050
	Scotland	186,350	185,700	195,850	202,010	203,710
	Wales	92,100	83,350	85,880	87,380	86,390
	UK	2,198,350	2,016,520	2,072,490	2,148,010	2,173,600

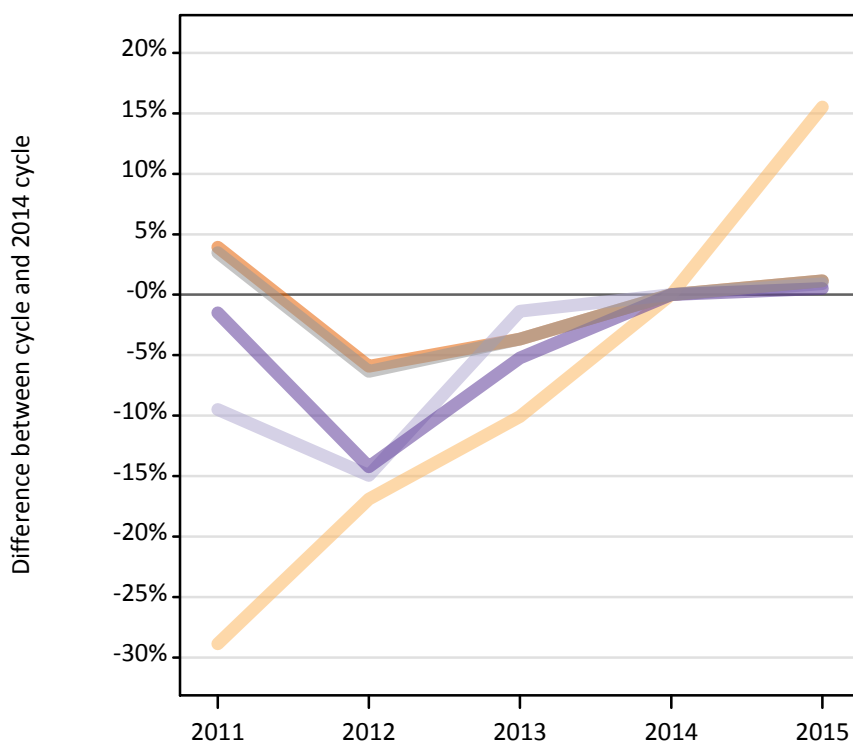
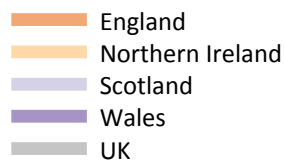
DX.5.6 Applications by domicile and country of institution : UK

Difference between cycle and 2014 cycle

Domicile of applicant and country of institution		2011	2012	2013	2014	2015
UK	England	4%	-6%	-4%	0%	1%
	Northern Ireland	-11%	-8%	-2%	0%	3%
	Scotland	-8%	-8%	-3%	0%	1%
	Wales	5%	-5%	-2%	0%	-1%
	UK	2%	-6%	-4%	0%	1%

DX.5.7 Applications by domicile and country of institution : England

Difference between cycle and 2014 cycle



DX.5.8 Applications by domicile and country of institution : England

Domicile of applicant and country of institution		2011	2012	2013	2014	2015
England	England	1,785,800	1,616,210	1,655,250	1,718,100	1,738,000
	Northern Ireland	1,850	2,160	2,340	2,600	3,010
	Scotland	32,100	30,170	34,990	35,470	35,790
	Wales	48,560	42,290	46,720	49,300	49,560
	UK	1,868,310	1,690,830	1,739,290	1,805,470	1,826,350

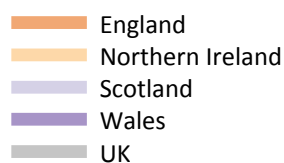
DX.5.9 Applications by domicile and country of institution : England

Difference between cycle and 2014 cycle

Domicile of applicant and country of institution		2011	2012	2013	2014	2015
England	England	4%	-6%	-4%	0%	1%
	Northern Ireland	-29%	-17%	-10%	0%	16%
	Scotland	-9%	-15%	-1%	0%	1%
	Wales	-2%	-14%	-5%	0%	1%
	UK	3%	-6%	-4%	0%	1%

DX.5.10 Applications by domicile and country of institution : Northern Ireland

Difference between cycle and 2014 cycle



DX.5.11 Applications by domicile and country of institution : Northern Ireland

Domicile of applicant and country of institution		2011	2012	2013	2014	2015
Northern Ireland	England	28,000	23,870	24,820	25,260	26,020
	Northern Ireland	47,930	49,360	52,510	53,360	54,720
	Scotland	9,770	8,020	9,500	8,390	8,030
	Wales	1,270	1,060	1,270	1,160	1,140
	UK	86,970	82,290	88,090	88,160	89,900

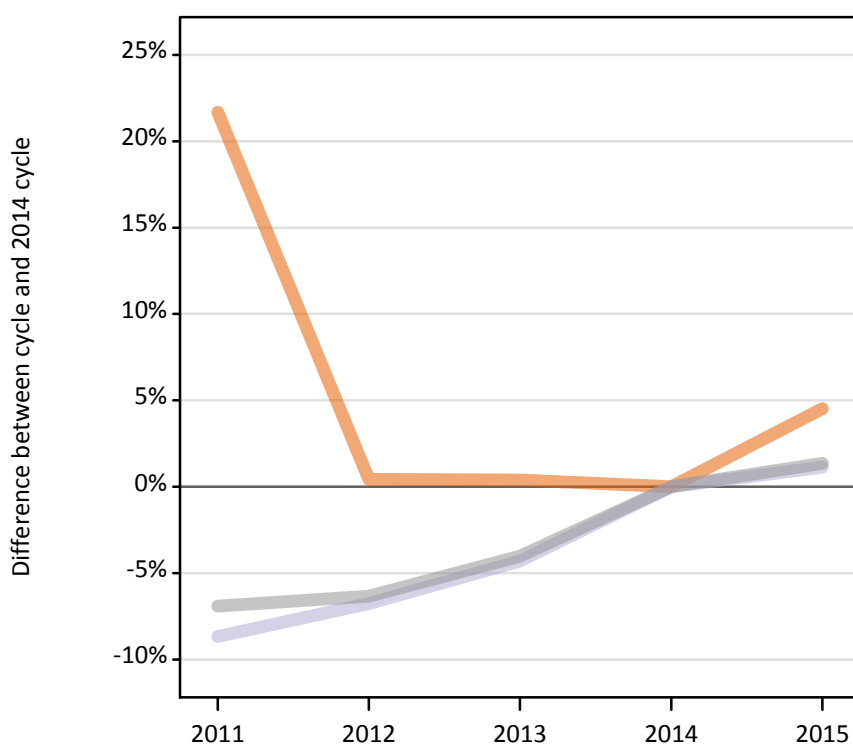
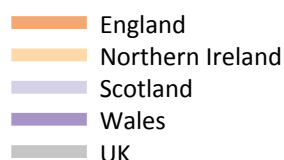
DX.5.12 Applications by domicile and country of institution : Northern Ireland

Difference between cycle and 2014 cycle

Domicile of applicant and country of institution		2011	2012	2013	2014	2015
Northern Ireland	England	11%	-6%	-2%	0%	3%
	Northern Ireland	-10%	-8%	-2%	0%	3%
	Scotland	16%	-4%	13%	0%	-4%
	Wales	10%	-9%	10%	0%	-1%
	UK	-1%	-7%	-0%	0%	2%

DX.5.13 Applications by domicile and country of institution : Scotland

Difference between cycle and 2014 cycle



DX.5.14 Applications by domicile and country of institution : Scotland

Domicile of applicant and country of institution		2011	2012	2013	2014	2015
Scotland	England	10,840	8,950	8,940	8,910	9,310
	Northern Ireland	190	190	190	140	220
	Scotland	143,490	146,470	150,350	157,100	158,870
	Wales	350	230	210	220	220
	UK	154,870	155,840	159,680	166,370	168,620

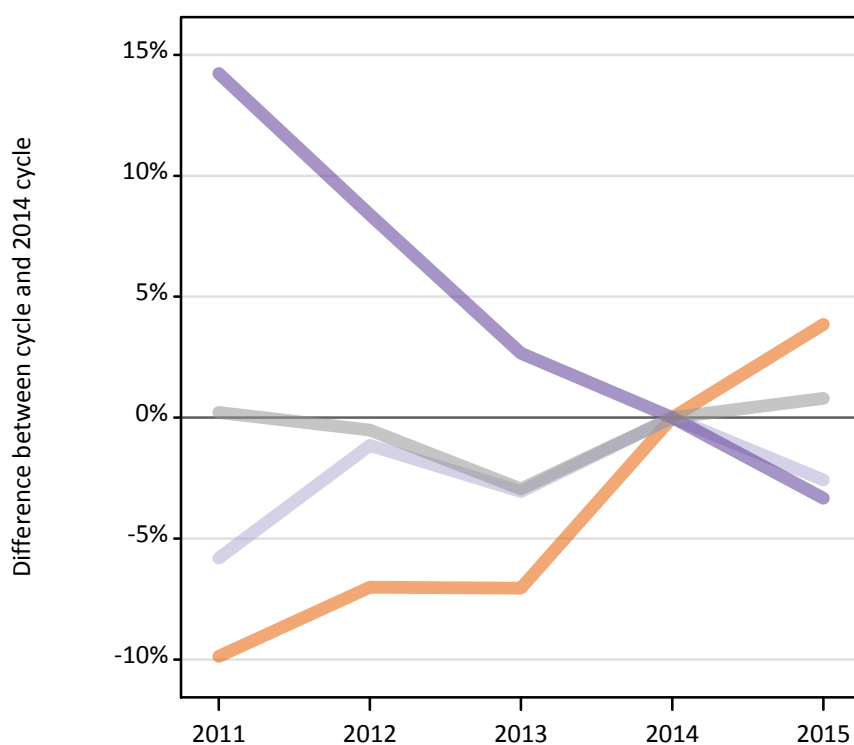
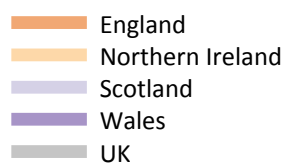
DX.5.15 Applications by domicile and country of institution : Scotland

Difference between cycle and 2014 cycle

Domicile of applicant and country of institution		2011	2012	2013	2014	2015
Scotland	England	22%	0%	0%	0%	5%
	Northern Ireland	38%	37%	33%	0%	57%
	Scotland	-9%	-7%	-4%	0%	1%
	Wales	59%	2%	-4%	0%	-0%
	UK	-7%	-6%	-4%	0%	1%

DX.5.16 Applications by domicile and country of institution : Wales

Difference between cycle and 2014 cycle



DX.5.17 Applications by domicile and country of institution : Wales

Domicile of applicant and country of institution		2011	2012	2013	2014	2015
Wales	England	45,220	46,660	46,640	50,180	52,120
	Northern Ireland	70	90	90	90	110
	Scotland	990	1,040	1,020	1,050	1,020
	Wales	41,920	39,780	37,680	36,700	35,480
	UK	88,210	87,570	85,420	88,020	88,720

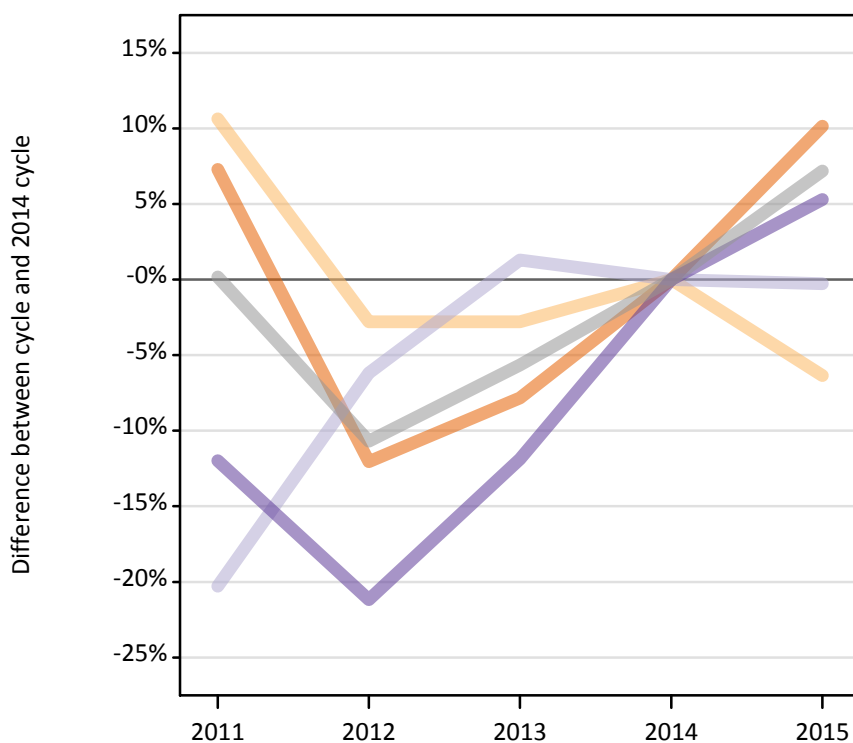
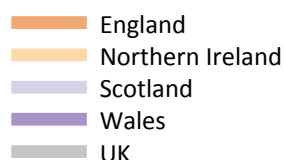
DX.5.18 Applications by domicile and country of institution : Wales

Difference between cycle and 2014 cycle

Domicile of applicant and country of institution		2011	2012	2013	2014	2015
Wales	England	-10%	-7%	-7%	0%	4%
	Northern Ireland	-21%	1%	-3%	0%	21%
	Scotland	-6%	-1%	-3%	0%	-3%
	Wales	14%	8%	3%	0%	-3%
	UK	0%	-1%	-3%	0%	1%

DX.5.19 Applications by domicile and country of institution : EU (excluding UK)

Difference between cycle and 2014 cycle



DX.5.20 Applications by domicile and country of institution : EU (excluding UK)

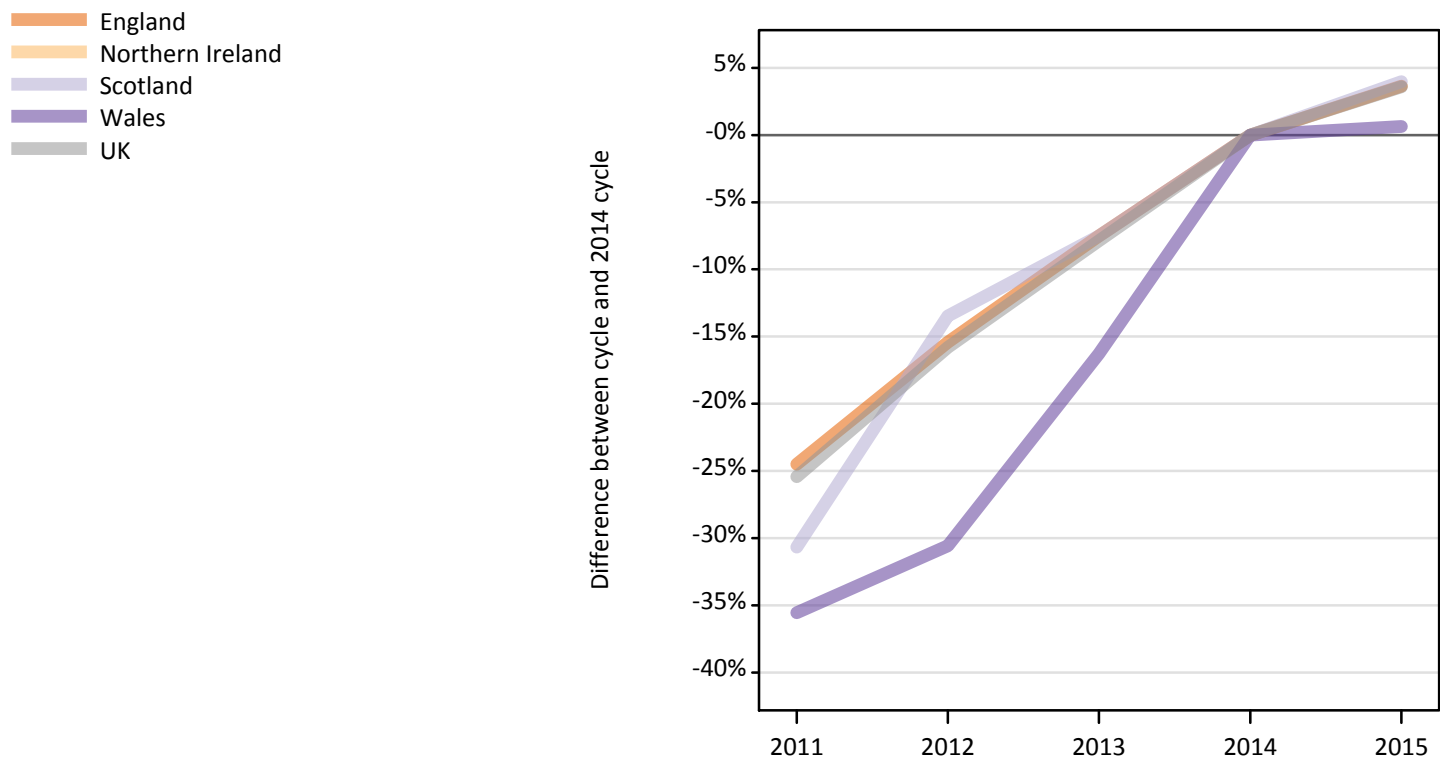
Domicile of applicant and country of institution		2011	2012	2013	2014	2015
EU (excluding UK)	England	134,810	110,520	115,790	125,650	138,400
	Northern Ireland	3,730	3,280	3,280	3,370	3,160
	Scotland	33,950	39,950	43,140	42,580	42,470
	Wales	4,200	3,770	4,210	4,780	5,030
	UK	176,700	157,510	166,420	176,380	189,060

DX.5.21 Applications by domicile and country of institution : EU (excluding UK)

Difference between cycle and 2014 cycle

Domicile of applicant and country of institution		2011	2012	2013	2014	2015
EU (excluding UK)	England	7%	-12%	-8%	0%	10%
	Northern Ireland	11%	-3%	-3%	0%	-6%
	Scotland	-20%	-6%	1%	0%	-0%
	Wales	-12%	-21%	-12%	0%	5%
	UK	0%	-11%	-6%	0%	7%

DX.5.22 Applications by domicile and country of institution : Not EU
Difference between cycle and 2014 cycle



DX.5.23 Applications by domicile and country of institution : Not EU

Domicile of applicant and country of institution		2011	2012	2013	2014	2015
Not EU	England	150,680	168,800	184,580	199,580	206,840
	Northern Ireland	480	610	730	1,080	1,120
	Scotland	12,090	15,090	16,130	17,440	18,140
	Wales	3,790	4,090	4,930	5,890	5,920
	UK	167,040	188,590	206,360	223,990	232,020

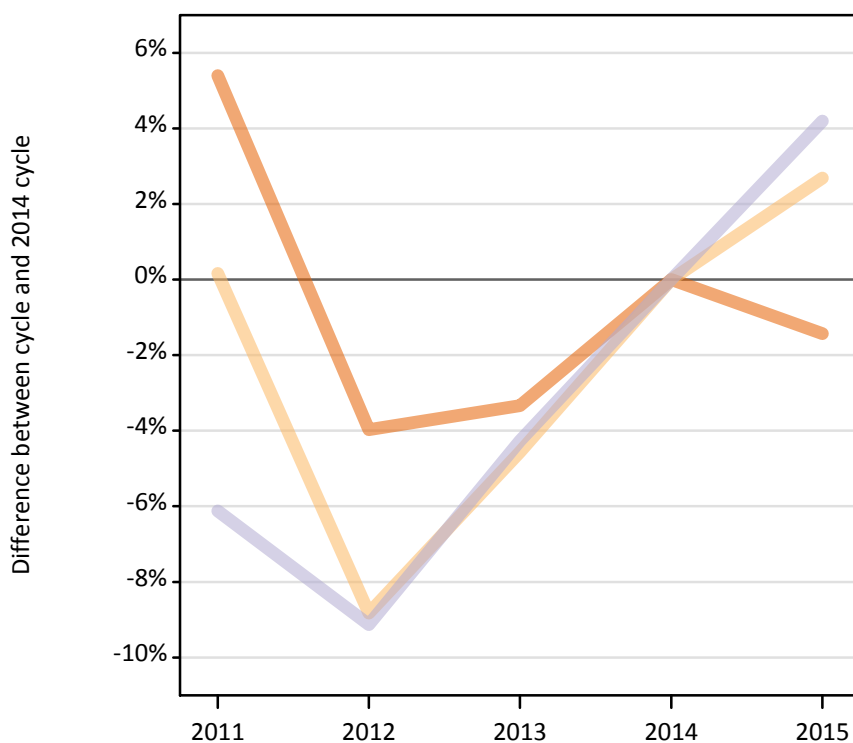
DX.5.24 Applications by domicile and country of institution : Not EU
Difference between cycle and 2014 cycle

Domicile of applicant and country of institution		2011	2012	2013	2014	2015
Not EU	England	-25%	-15%	-8%	0%	4%
	Northern Ireland	-56%	-43%	-33%	0%	4%
	Scotland	-31%	-13%	-8%	0%	4%
	Wales	-36%	-31%	-16%	0%	1%
	UK	-25%	-16%	-8%	0%	4%

DX.5.25 Applications by domicile and tariff group of institution : All domiciles

Difference between cycle and 2014 cycle

- 1. Lower tariff
- 2. Medium tariff
- 3. Higher tariff



DX.5.26 Applications by domicile and tariff group of institution : All domiciles

Domicile of applicant and tariff group of institution		2011	2012	2013	2014	2015
All domiciles	1. Lower tariff	909,770	828,870	834,350	863,180	850,820
	2. Medium tariff	800,950	729,020	763,120	799,630	821,140
	3. Higher tariff	831,370	804,730	847,790	885,570	922,710
	All	2,542,090	2,362,630	2,445,270	2,548,380	2,594,670

DX.5.27 Applications by domicile and tariff group of institution : All domiciles

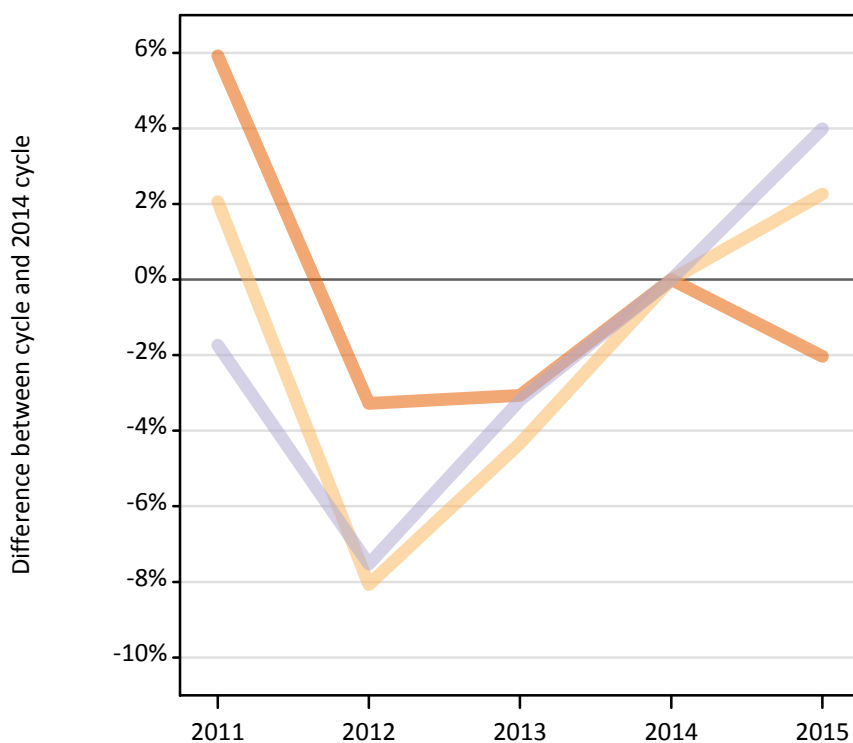
Difference between cycle and 2014 cycle

Domicile of applicant and tariff group of institution		2011	2012	2013	2014	2015
All domiciles	1. Lower tariff	5%	-4%	-3%	0%	-1%
	2. Medium tariff	0%	-9%	-5%	0%	3%
	3. Higher tariff	-6%	-9%	-4%	0%	4%
	All	-0%	-7%	-4%	0%	2%

DX.5.28 Applications by domicile and tariff group of institution : UK

Difference between cycle and 2014 cycle

- 1. Lower tariff
- 2. Medium tariff
- 3. Higher tariff



DX.5.29 Applications by domicile and tariff group of institution : UK

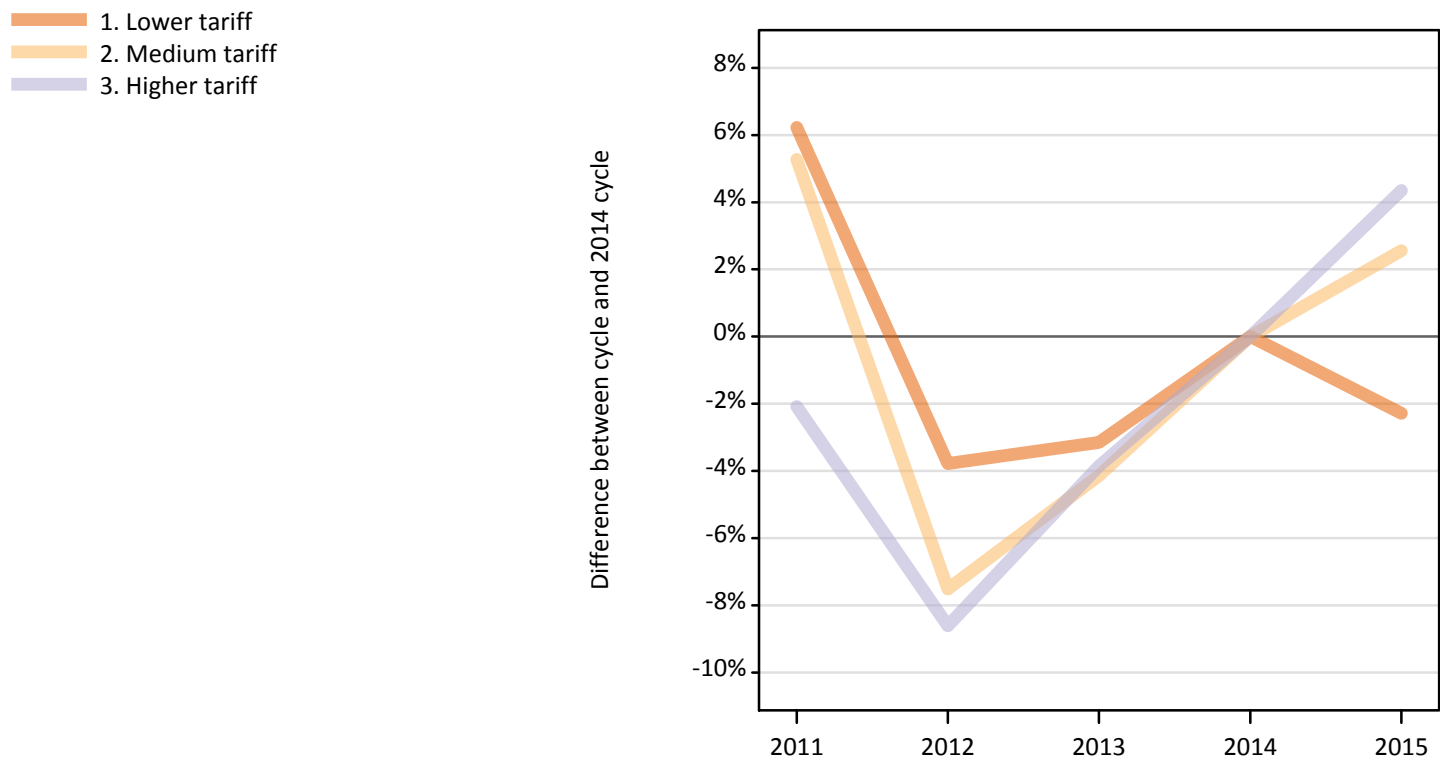
Domicile of applicant and tariff group of institution		2011	2012	2013	2014	2015
UK	1. Lower tariff	846,410	772,920	774,580	799,070	782,840
	2. Medium tariff	710,130	639,670	665,650	695,820	711,550
	3. Higher tariff	641,820	603,940	632,260	653,130	679,210
	All	2,198,350	2,016,520	2,072,490	2,148,010	2,173,600

DX.5.30 Applications by domicile and tariff group of institution : UK

Difference between cycle and 2014 cycle

Domicile of applicant and tariff group of institution		2011	2012	2013	2014	2015
UK	1. Lower tariff	6%	-3%	-3%	0%	-2%
	2. Medium tariff	2%	-8%	-4%	0%	2%
	3. Higher tariff	-2%	-8%	-3%	0%	4%
	All	2%	-6%	-4%	0%	1%

DX.5.31 Applications by domicile and tariff group of institution : England
Difference between cycle and 2014 cycle



DX.5.32 Applications by domicile and tariff group of institution : England

Domicile of applicant and tariff group of institution		2011	2012	2013	2014	2015
England	1. Lower tariff	764,850	692,820	697,330	720,040	703,630
	2. Medium tariff	581,880	511,190	529,820	552,740	566,860
	3. Higher tariff	521,580	486,820	512,140	532,690	555,870
	All	1,868,310	1,690,830	1,739,290	1,805,470	1,826,350

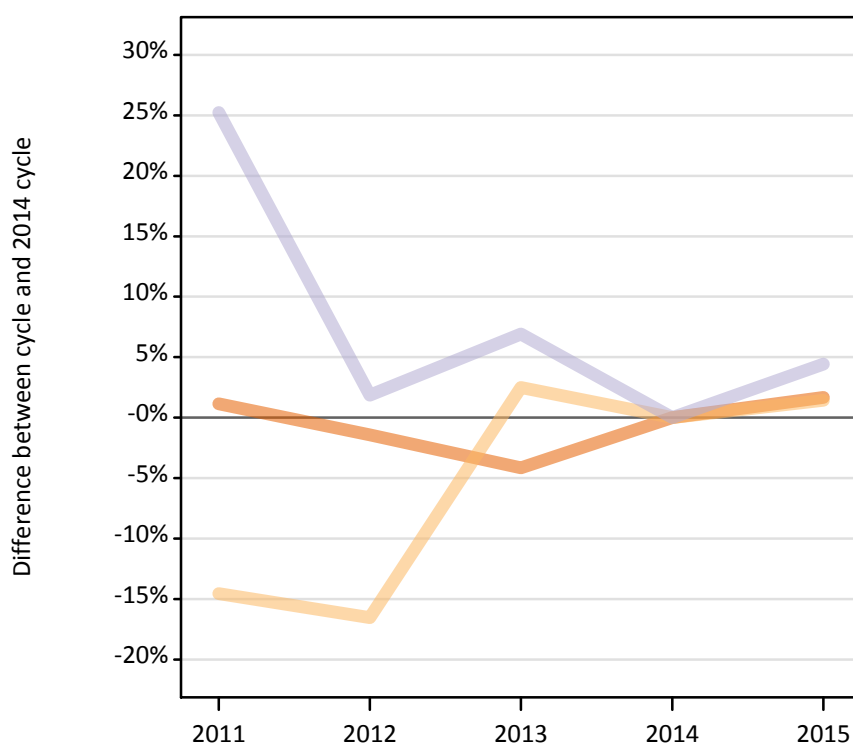
DX.5.33 Applications by domicile and tariff group of institution : England
Difference between cycle and 2014 cycle

Domicile of applicant and tariff group of institution		2011	2012	2013	2014	2015
England	1. Lower tariff	6%	-4%	-3%	0%	-2%
	2. Medium tariff	5%	-8%	-4%	0%	3%
	3. Higher tariff	-2%	-9%	-4%	0%	4%
	All	3%	-6%	-4%	0%	1%

DX.5.34 Applications by domicile and tariff group of institution : Northern Ireland

Difference between cycle and 2014 cycle

- 1. Lower tariff
- 2. Medium tariff
- 3. Higher tariff

**DX.5.35 Applications by domicile and tariff group of institution : Northern Ireland**

Domicile of applicant and tariff group of institution		2011	2012	2013	2014	2015
Northern Ireland	1. Lower tariff	42,950	41,860	40,700	42,470	43,180
	2. Medium tariff	28,350	27,690	34,010	33,180	33,650
	3. Higher tariff	15,670	12,750	13,380	12,520	13,070
	All	86,970	82,290	88,090	88,160	89,900

DX.5.36 Applications by domicile and tariff group of institution : Northern Ireland

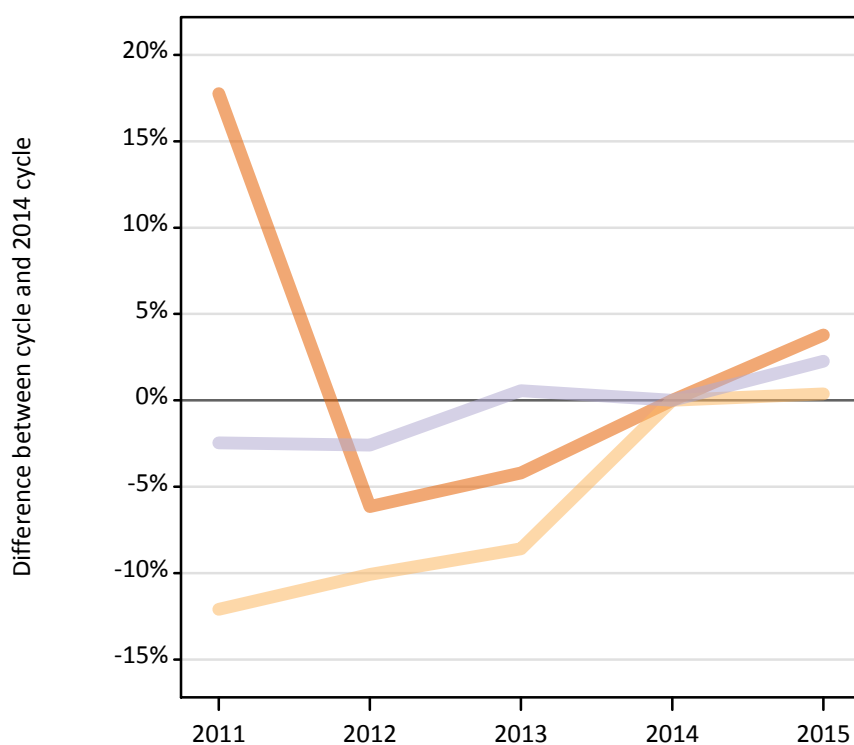
Difference between cycle and 2014 cycle

Domicile of applicant and tariff group of institution		2011	2012	2013	2014	2015
Northern Ireland	1. Lower tariff	1%	-1%	-4%	0%	2%
	2. Medium tariff	-15%	-17%	3%	0%	1%
	3. Higher tariff	25%	2%	7%	0%	4%
	All	-1%	-7%	-0%	0%	2%

DX.5.37 Applications by domicile and tariff group of institution : Scotland

Difference between cycle and 2014 cycle

- 1. Lower tariff
- 2. Medium tariff
- 3. Higher tariff



DX.5.38 Applications by domicile and tariff group of institution : Scotland

Domicile of applicant and tariff group of institution		2011	2012	2013	2014	2015
Scotland	1. Lower tariff	2,800	2,230	2,280	2,380	2,470
	2. Medium tariff	72,060	73,710	74,930	81,970	82,280
	3. Higher tariff	80,000	79,890	82,470	82,020	83,870
	All	154,870	155,840	159,680	166,370	168,620

DX.5.39 Applications by domicile and tariff group of institution : Scotland

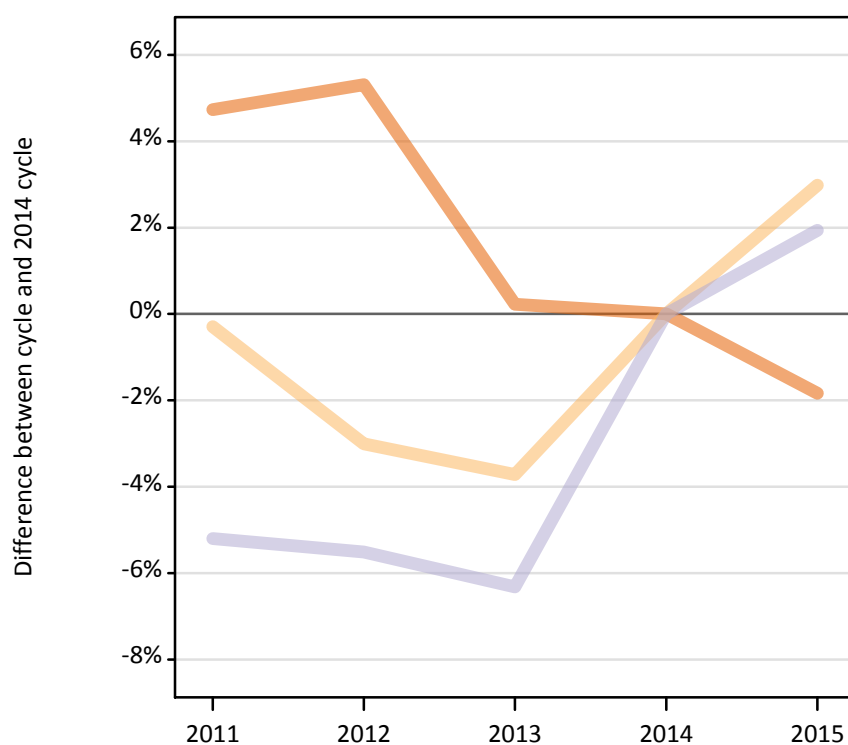
Difference between cycle and 2014 cycle

Domicile of applicant and tariff group of institution		2011	2012	2013	2014	2015
Scotland	1. Lower tariff	18%	-6%	-4%	0%	4%
	2. Medium tariff	-12%	-10%	-9%	0%	0%
	3. Higher tariff	-2%	-3%	1%	0%	2%
	All	-7%	-6%	-4%	0%	1%

DX.5.40 Applications by domicile and tariff group of institution : Wales

Difference between cycle and 2014 cycle

- 1. Lower tariff
- 2. Medium tariff
- 3. Higher tariff



DX.5.41 Applications by domicile and tariff group of institution : Wales

Domicile of applicant and tariff group of institution		2011	2012	2013	2014	2015
Wales	1. Lower tariff	35,810	36,010	34,270	34,190	33,570
	2. Medium tariff	27,840	27,080	26,880	27,920	28,750
	3. Higher tariff	24,560	24,480	24,270	25,900	26,410
	All	88,210	87,570	85,420	88,020	88,720

DX.5.42 Applications by domicile and tariff group of institution : Wales

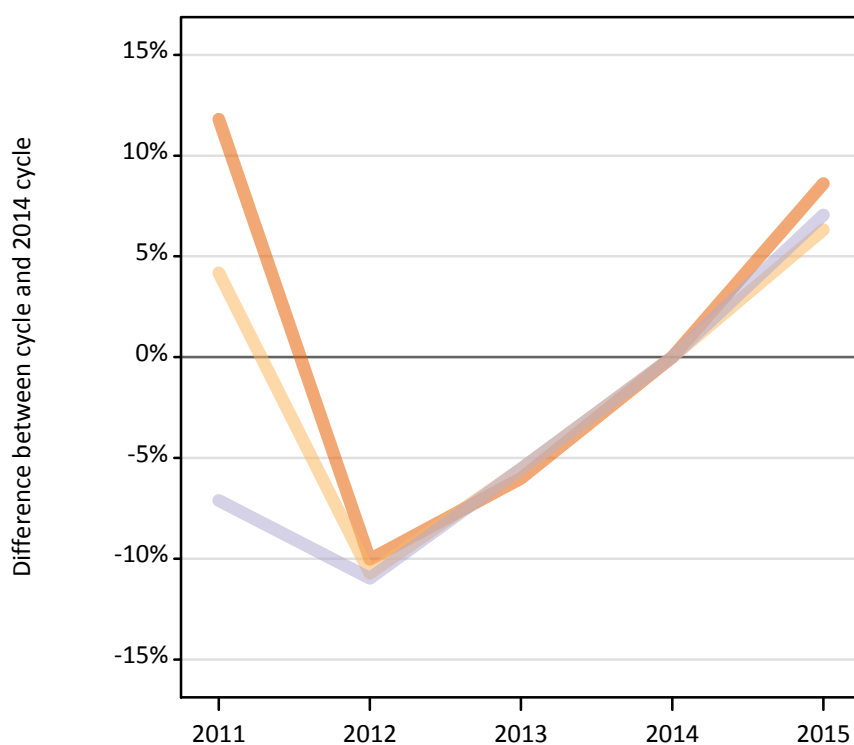
Difference between cycle and 2014 cycle

Domicile of applicant and tariff group of institution		2011	2012	2013	2014	2015
Wales	1. Lower tariff	5%	5%	0%	0%	-2%
	2. Medium tariff	-0%	-3%	-4%	0%	3%
	3. Higher tariff	-5%	-6%	-6%	0%	2%
	All	0%	-1%	-3%	0%	1%

DX.5.43 Applications by domicile and tariff group of institution : EU (excluding UK)

Difference between cycle and 2014 cycle

- 1. Lower tariff
- 2. Medium tariff
- 3. Higher tariff

**DX.5.44 Applications by domicile and tariff group of institution : EU (excluding UK)**

Domicile of applicant and tariff group of institution		2011	2012	2013	2014	2015
EU (excluding UK)	1. Lower tariff	43,170	34,740	36,290	38,610	41,940
	2. Medium tariff	51,230	43,900	46,450	49,180	52,280
	3. Higher tariff	82,290	78,870	83,680	88,590	94,830
	All	176,700	157,510	166,420	176,380	189,060

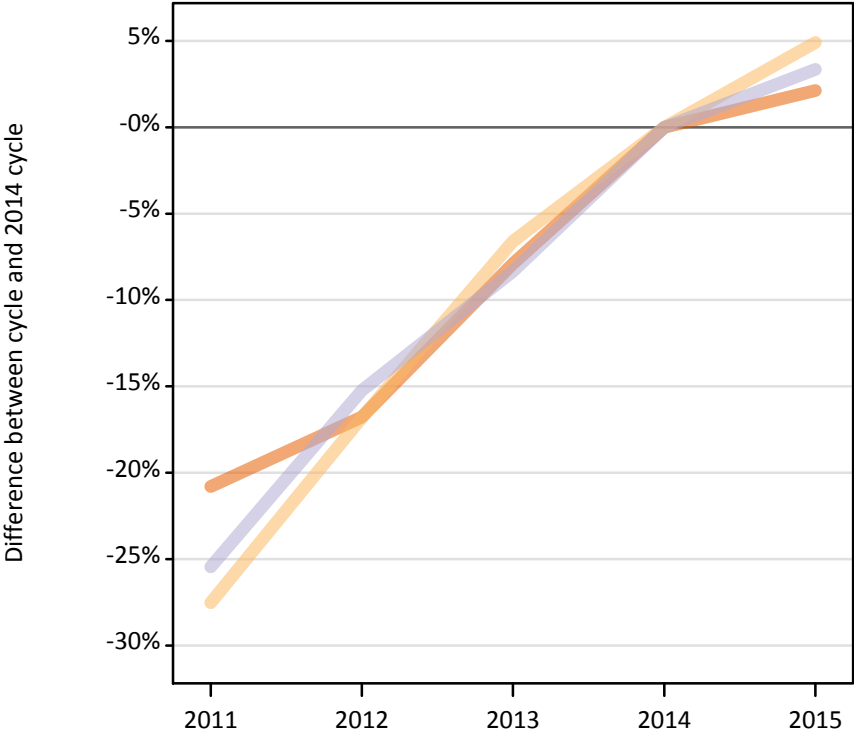
DX.5.45 Applications by domicile and tariff group of institution : EU (excluding UK)

Difference between cycle and 2014 cycle

Domicile of applicant and tariff group of institution		2011	2012	2013	2014	2015
EU (excluding UK)	1. Lower tariff	12%	-10%	-6%	0%	9%
	2. Medium tariff	4%	-11%	-6%	0%	6%
	3. Higher tariff	-7%	-11%	-6%	0%	7%
	All	0%	-11%	-6%	0%	7%

DX.5.46 Applications by domicile and tariff group of institution : Not EU
 Difference between cycle and 2014 cycle

- 1. Lower tariff
- 2. Medium tariff
- 3. Higher tariff



DX.5.47 Applications by domicile and tariff group of institution : Not EU

Domicile of applicant and tariff group of institution		2011	2012	2013	2014	2015
Not EU	1. Lower tariff	20,190	21,220	23,480	25,490	26,040
	2. Medium tariff	39,600	45,450	51,030	54,640	57,320
	3. Higher tariff	107,260	121,930	131,850	143,860	148,670
	All	167,040	188,590	206,360	223,990	232,020

DX.5.48 Applications by domicile and tariff group of institution : Not EU
 Difference between cycle and 2014 cycle

Domicile of applicant and tariff group of institution		2011	2012	2013	2014	2015
Not EU	1. Lower tariff	-21%	-17%	-8%	0%	2%
	2. Medium tariff	-28%	-17%	-7%	0%	5%
	3. Higher tariff	-25%	-15%	-8%	0%	3%
	All	-25%	-16%	-8%	0%	4%

DX.5.49 Technical notes and definitions

Applicants have been able to submit applications for all 2015 courses since early September.

These additional tables have been produced to help comparisons through time, particularly when considering Scottish domiciled applicants and Scottish providers.

In 2015, around 125 courses relating to teacher training that historically would only have been available through UCAS Teacher Training, and therefore not previously counted in the scope of this statistical release, were brought into the undergraduate UCAS scheme. These courses are all offered by providers based in Scotland and are in the JACS3 detailed subject reporting grouping of 'X1'. The large majority of applications to these courses are from applicants living in Scotland.

These additional tables exclude any applications made by applicants to subject group 'X1' at Scottish providers and provide a better 'like for like' comparison particularly when considering Scottish domiciled applicants and Scottish providers. The primary deadline applicant statistics which include all applications to Scottish providers are available upon the UCAS website.

Counts of the number of applicants reported have been rounded to the nearest 10 applicants, this may result in instances where totals do not equal the sum of the components. Proportional changes have been rounded to the nearest whole percentage point.

The Channel Islands and the Isle of Man are assigned as 'Not EU'. The previous January statistical release assigned the Channel Islands and Isle of Man in the 'UK' therefore the figures for earlier cycles may not match the previous January statistical release.

Age

This statistical release uses country-specific age definitions which align with the cut off points for school/college cohorts within the different administrations of the UK. For England and Wales ages are defined on the 31 August, for Northern Ireland on the 1 July and for Scotland on the 28 February the following year. Defining ages in this way matches the assignment of children to school cohorts. For applicants outside of the UK the cohort cut off for England and Wales has been used.

Applicant

A person who has made an application in the UCAS system during the cycle reported, this includes those who submit applications for deferred entry.

Application

An application to a course at an institution made by an applicant. Applicants may make up to five applications.

Country of institution

The UK country of the institution applied to.

Domicile

Declared area of permanent residence. The Channel Islands and the Isle of Man have been assigned as 'Not EU'.

First time applicant

An applicant that did not apply to the UCAS scheme in the previous cycle.

Reapplier

An applicant that applied to the UCAS scheme in the previous cycle.

Subject group

The JACS3 classification used to classify courses into subject groups.

Tariff group of institution

Institutions are grouped as higher, medium or lower tariff based on their average levels of attainment of their accepted applicants (summarised through UCAS Tariff points) in recent cycles. Each group of institutions accounted for around a third of all UK 18 year old acceptances in recent cycles.