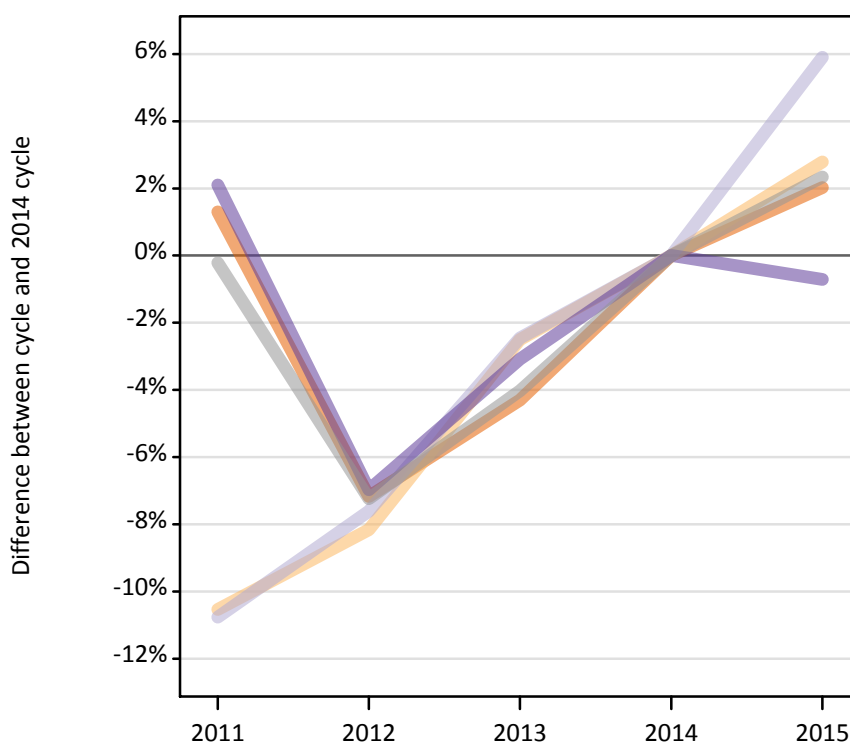
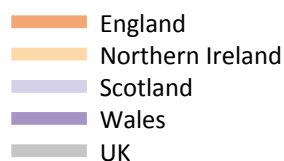


Applications by country and type of institution at the 15 January deadline

D.5.1 Applications by domicile and country of institution : All domiciles

Difference between cycle and 2014 cycle



D.5.2 Applications by domicile and country of institution : All domiciles

Domicile of applicant and country of institution		2011	2012	2013	2014	2015
All domiciles	England	2,155,350	1,975,000	2,036,020	2,127,670	2,170,680
	Northern Ireland	54,250	55,690	59,120	60,640	62,330
	Scotland	238,260	246,680	260,440	266,990	282,760
	Wales	100,100	91,200	95,020	98,040	97,350
	UK	2,547,960	2,368,570	2,450,590	2,553,340	2,613,120

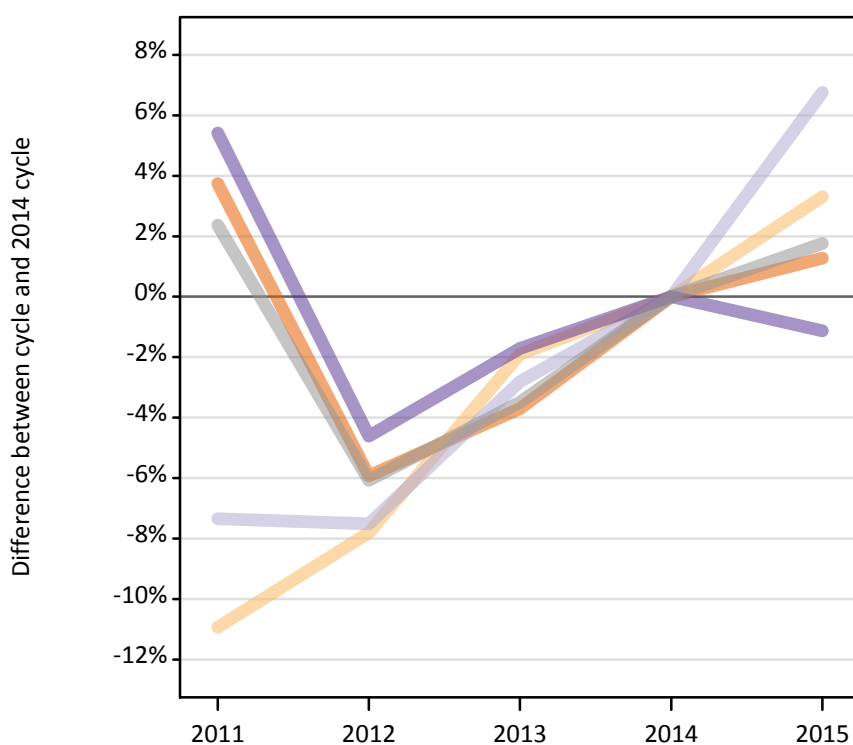
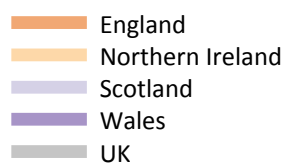
D.5.3 Applications by domicile and country of institution : All domiciles

Difference between cycle and 2014 cycle

Domicile of applicant and country of institution		2011	2012	2013	2014	2015
All domiciles	England	1%	-7%	-4%	0%	2%
	Northern Ireland	-11%	-8%	-3%	0%	3%
	Scotland	-11%	-8%	-2%	0%	6%
	Wales	2%	-7%	-3%	0%	-1%
	UK	-0%	-7%	-4%	0%	2%

D.5.4 Applications by domicile and country of institution : UK

Difference between cycle and 2014 cycle



D.5.5 Applications by domicile and country of institution : UK

Domicile of applicant and country of institution		2011	2012	2013	2014	2015
UK	England	1,869,860	1,695,680	1,735,650	1,802,440	1,825,450
	Northern Ireland	50,040	51,800	55,120	56,190	58,050
	Scotland	191,580	191,230	200,940	206,760	220,730
	Wales	92,100	83,350	85,880	87,380	86,390
	UK	2,203,580	2,022,060	2,077,580	2,152,760	2,190,610

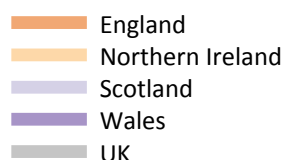
D.5.6 Applications by domicile and country of institution : UK

Difference between cycle and 2014 cycle

Domicile of applicant and country of institution		2011	2012	2013	2014	2015
UK	England	4%	-6%	-4%	0%	1%
	Northern Ireland	-11%	-8%	-2%	0%	3%
	Scotland	-7%	-8%	-3%	0%	7%
	Wales	5%	-5%	-2%	0%	-1%
	UK	2%	-6%	-3%	0%	2%

D.5.7 Applications by domicile and country of institution : England

Difference between cycle and 2014 cycle



D.5.8 Applications by domicile and country of institution : England

Domicile of applicant and country of institution		2011	2012	2013	2014	2015
England	England	1,785,800	1,616,210	1,655,250	1,718,100	1,738,000
	Northern Ireland	1,850	2,160	2,340	2,600	3,010
	Scotland	32,330	30,420	35,190	35,630	36,140
	Wales	48,560	42,290	46,720	49,300	49,560
	UK	1,868,540	1,691,080	1,739,490	1,805,630	1,826,710

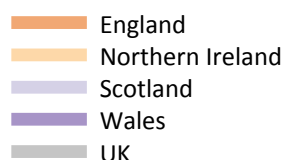
D.5.9 Applications by domicile and country of institution : England

Difference between cycle and 2014 cycle

Domicile of applicant and country of institution		2011	2012	2013	2014	2015
England	England	4%	-6%	-4%	0%	1%
	Northern Ireland	-29%	-17%	-10%	0%	16%
	Scotland	-9%	-15%	-1%	0%	1%
	Wales	-2%	-14%	-5%	0%	1%
	UK	3%	-6%	-4%	0%	1%

D.5.10 Applications by domicile and country of institution : Northern Ireland

Difference between cycle and 2014 cycle



D.5.11 Applications by domicile and country of institution : Northern Ireland

Domicile of applicant and country of institution		2011	2012	2013	2014	2015
Northern Ireland	England	28,000	23,870	24,820	25,260	26,020
	Northern Ireland	47,930	49,360	52,510	53,360	54,720
	Scotland	10,160	8,330	9,900	8,600	8,680
	Wales	1,270	1,060	1,270	1,160	1,140
	UK	87,360	82,610	88,500	88,370	90,550

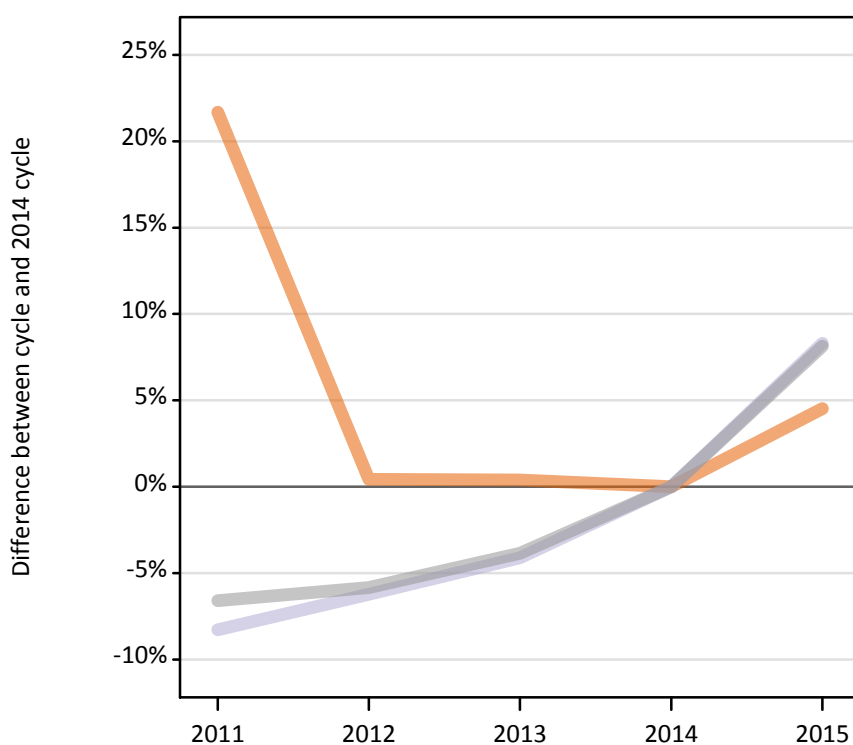
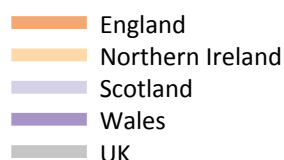
D.5.12 Applications by domicile and country of institution : Northern Ireland

Difference between cycle and 2014 cycle

Domicile of applicant and country of institution		2011	2012	2013	2014	2015
Northern Ireland	England	11%	-6%	-2%	0%	3%
	Northern Ireland	-10%	-8%	-2%	0%	3%
	Scotland	18%	-3%	15%	0%	1%
	Wales	10%	-9%	10%	0%	-1%
	UK	-1%	-7%	0%	0%	2%

D.5.13 Applications by domicile and country of institution : Scotland

Difference between cycle and 2014 cycle



D.5.14 Applications by domicile and country of institution : Scotland

Domicile of applicant and country of institution		2011	2012	2013	2014	2015
Scotland	England	10,840	8,950	8,940	8,910	9,310
	Northern Ireland	190	190	190	140	220
	Scotland	148,100	151,430	154,830	161,480	174,880
	Wales	350	230	210	220	220
	UK	159,480	160,790	164,170	170,750	184,630

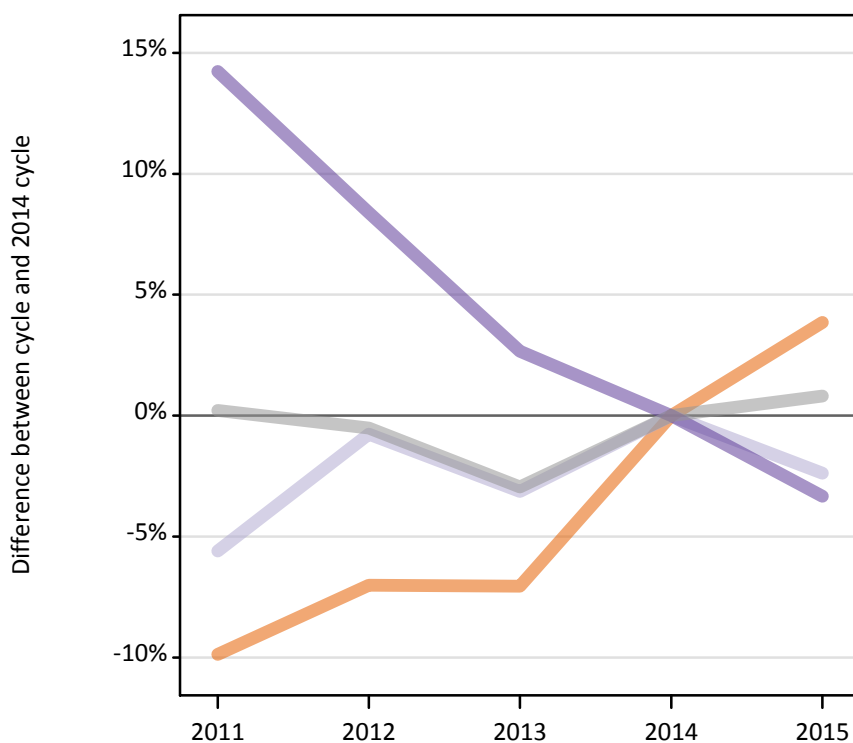
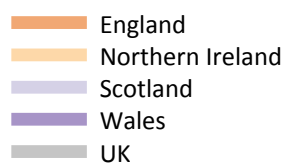
D.5.15 Applications by domicile and country of institution : Scotland

Difference between cycle and 2014 cycle

Domicile of applicant and country of institution		2011	2012	2013	2014	2015
Scotland	England	22%	0%	0%	0%	5%
	Northern Ireland	38%	37%	33%	0%	57%
	Scotland	-8%	-6%	-4%	0%	8%
	Wales	59%	2%	-4%	0%	-0%
	UK	-7%	-6%	-4%	0%	8%

D.5.16 Applications by domicile and country of institution : Wales

Difference between cycle and 2014 cycle



D.5.17 Applications by domicile and country of institution : Wales

Domicile of applicant and country of institution		2011	2012	2013	2014	2015
Wales	England	45,220	46,660	46,640	50,180	52,120
	Northern Ireland	70	90	90	90	110
	Scotland	990	1,050	1,020	1,050	1,030
	Wales	41,920	39,780	37,680	36,700	35,480
	UK	88,210	87,580	85,420	88,020	88,730

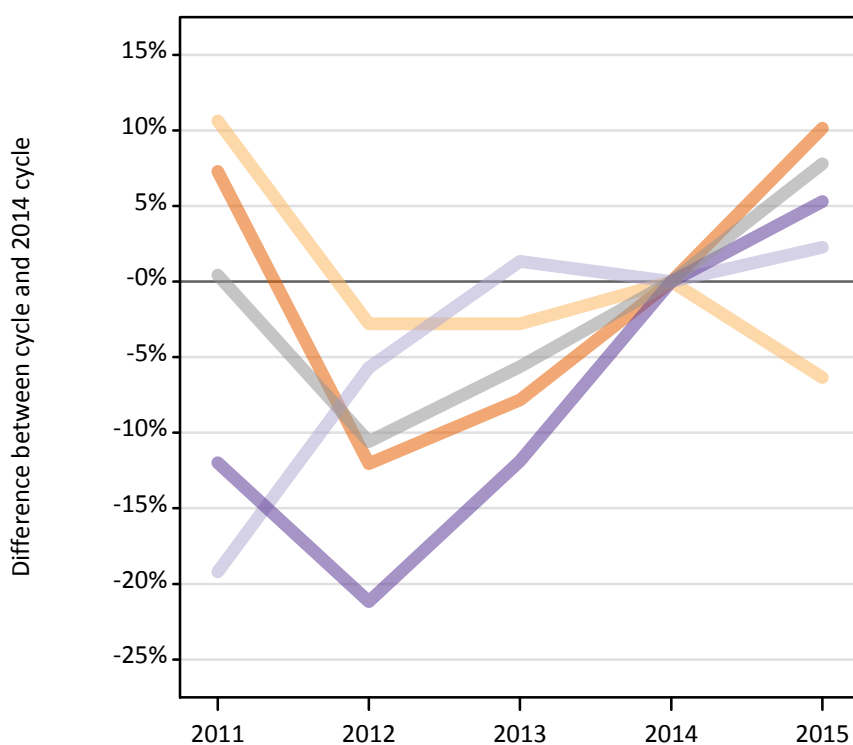
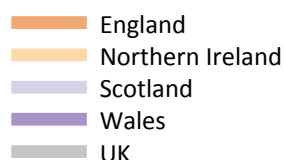
D.5.18 Applications by domicile and country of institution : Wales

Difference between cycle and 2014 cycle

Domicile of applicant and country of institution		2011	2012	2013	2014	2015
Wales	England	-10%	-7%	-7%	0%	4%
	Northern Ireland	-21%	1%	-3%	0%	21%
	Scotland	-6%	-1%	-3%	0%	-2%
	Wales	14%	8%	3%	0%	-3%
	UK	0%	-1%	-3%	0%	1%

D.5.19 Applications by domicile and country of institution : EU (excluding UK)

Difference between cycle and 2014 cycle



D.5.20 Applications by domicile and country of institution : EU (excluding UK)

Domicile of applicant and country of institution		2011	2012	2013	2014	2015
EU (excluding UK)	England	134,810	110,520	115,790	125,650	138,400
	Northern Ireland	3,730	3,280	3,280	3,370	3,160
	Scotland	34,560	40,330	43,340	42,770	43,740
	Wales	4,200	3,770	4,210	4,780	5,030
	UK	177,300	157,890	166,620	176,560	190,330

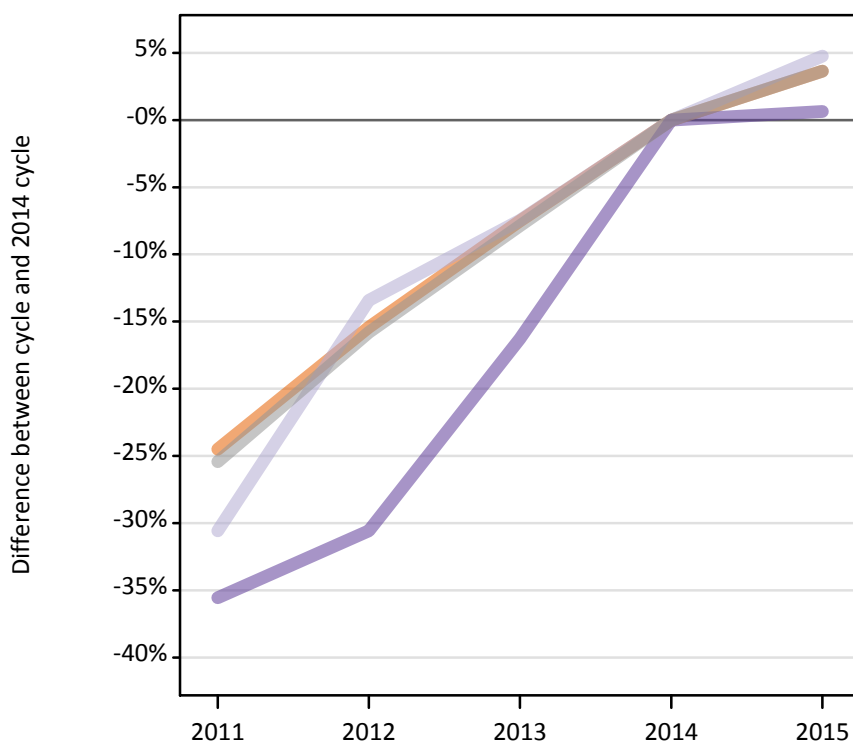
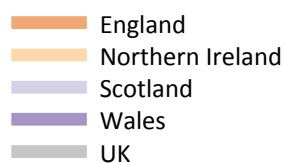
D.5.21 Applications by domicile and country of institution : EU (excluding UK)

Difference between cycle and 2014 cycle

Domicile of applicant and country of institution		2011	2012	2013	2014	2015
EU (excluding UK)	England	7%	-12%	-8%	0%	10%
	Northern Ireland	11%	-3%	-3%	0%	-6%
	Scotland	-19%	-6%	1%	0%	2%
	Wales	-12%	-21%	-12%	0%	5%
	UK	0%	-11%	-6%	0%	8%

D.5.22 Applications by domicile and country of institution : Not EU

Difference between cycle and 2014 cycle



D.5.23 Applications by domicile and country of institution : Not EU

Domicile of applicant and country of institution		2011	2012	2013	2014	2015
Not EU	England	150,680	168,800	184,580	199,580	206,840
	Northern Ireland	480	610	730	1,080	1,120
	Scotland	12,120	15,120	16,160	17,460	18,300
	Wales	3,790	4,090	4,930	5,890	5,920
	UK	167,070	188,620	206,390	224,010	232,180

D.5.24 Applications by domicile and country of institution : Not EU

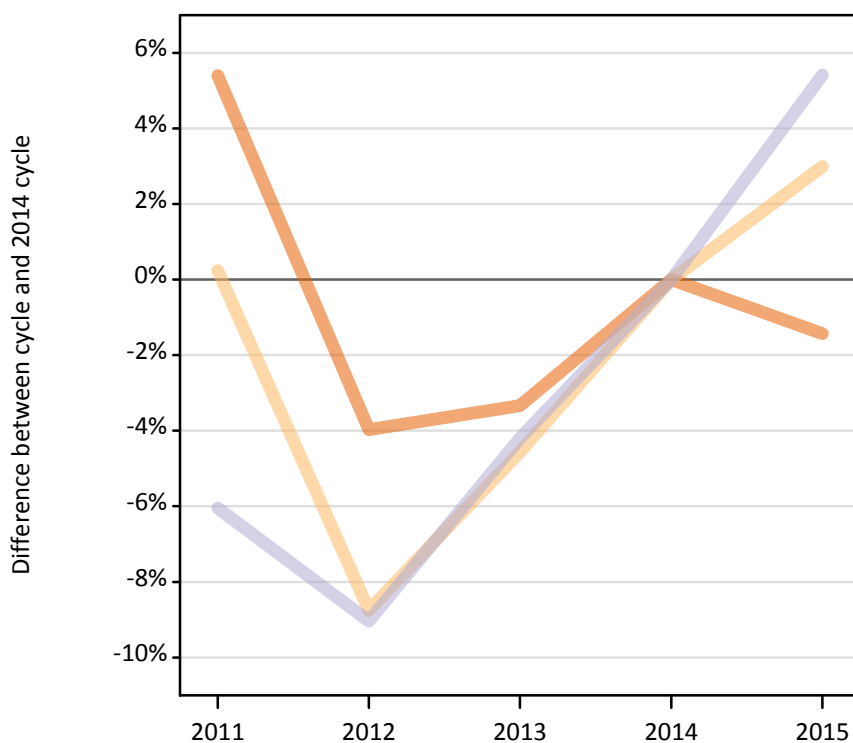
Difference between cycle and 2014 cycle

Domicile of applicant and country of institution		2011	2012	2013	2014	2015
Not EU	England	-25%	-15%	-8%	0%	4%
	Northern Ireland	-56%	-43%	-33%	0%	4%
	Scotland	-31%	-13%	-7%	0%	5%
	Wales	-36%	-31%	-16%	0%	1%
	UK	-25%	-16%	-8%	0%	4%

D.5.25 Applications by domicile and tariff group of institution : All domiciles

Difference between cycle and 2014 cycle

- 1. Lower tariff
- 2. Medium tariff
- 3. Higher tariff



D.5.26 Applications by domicile and tariff group of institution : All domiciles

Domicile of applicant and tariff group of institution		2011	2012	2013	2014	2015
All domiciles	1. Lower tariff	909,770	828,870	834,350	863,180	850,820
	2. Medium tariff	801,540	729,650	763,120	799,630	823,520
	3. Higher tariff	836,650	810,050	853,120	890,530	938,780
	All	2,547,960	2,368,570	2,450,590	2,553,340	2,613,120

D.5.27 Applications by domicile and tariff group of institution : All domiciles

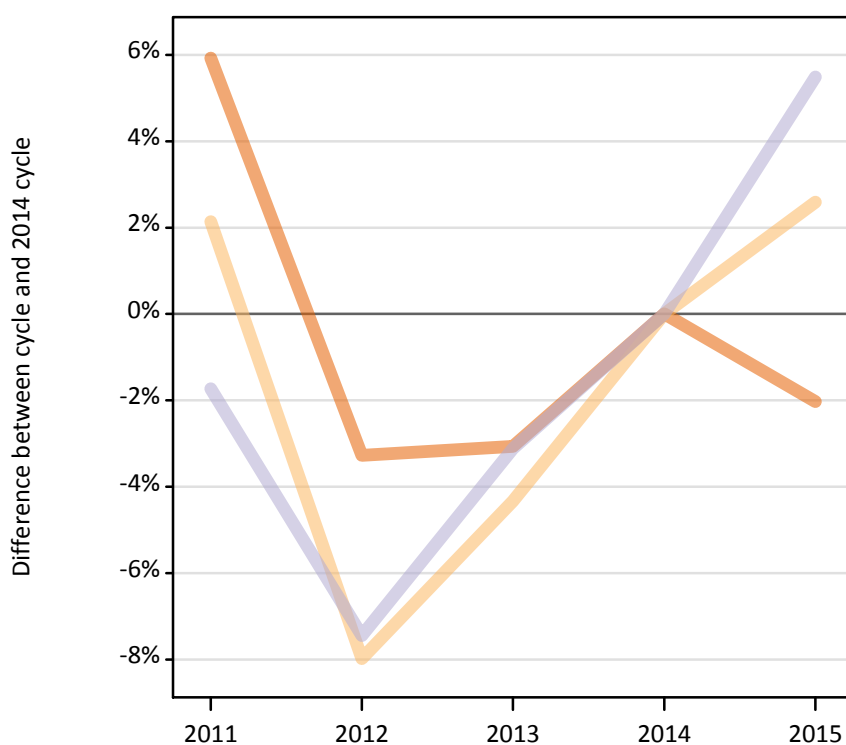
Difference between cycle and 2014 cycle

Domicile of applicant and tariff group of institution		2011	2012	2013	2014	2015
All domiciles	1. Lower tariff	5%	-4%	-3%	0%	-1%
	2. Medium tariff	0%	-9%	-5%	0%	3%
	3. Higher tariff	-6%	-9%	-4%	0%	5%
	All	-0%	-7%	-4%	0%	2%

D.5.28 Applications by domicile and tariff group of institution : UK

Difference between cycle and 2014 cycle

- 1. Lower tariff
- 2. Medium tariff
- 3. Higher tariff



D.5.29 Applications by domicile and tariff group of institution : UK

Domicile of applicant and tariff group of institution		2011	2012	2013	2014	2015
UK	1. Lower tariff	846,410	772,920	774,580	799,070	782,840
	2. Medium tariff	710,670	640,270	665,650	695,820	713,810
	3. Higher tariff	646,510	608,880	637,360	657,880	693,960
	All	2,203,580	2,022,060	2,077,580	2,152,760	2,190,610

D.5.30 Applications by domicile and tariff group of institution : UK

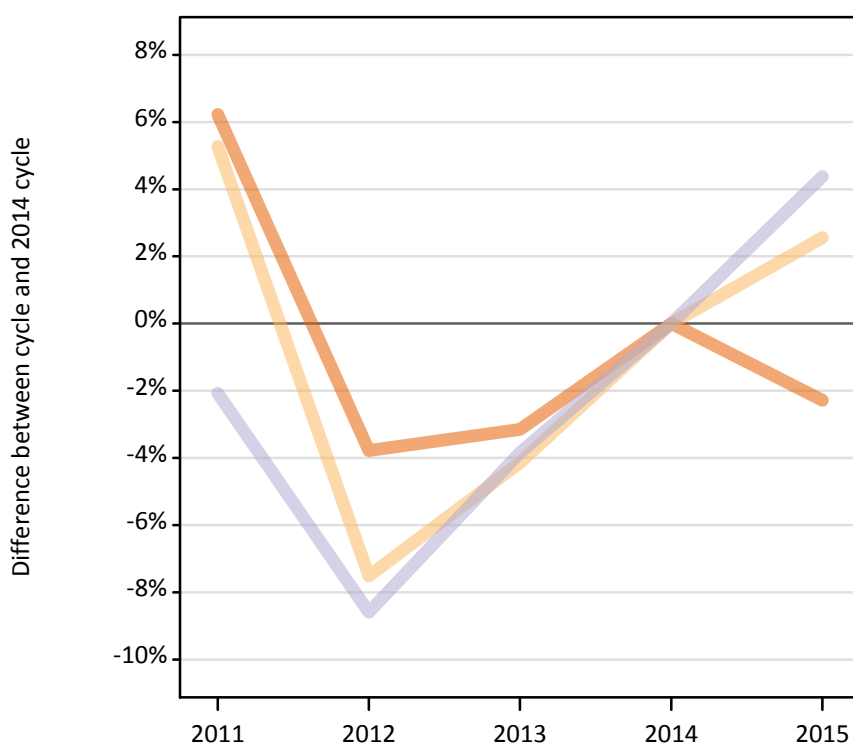
Difference between cycle and 2014 cycle

Domicile of applicant and tariff group of institution		2011	2012	2013	2014	2015
UK	1. Lower tariff	6%	-3%	-3%	0%	-2%
	2. Medium tariff	2%	-8%	-4%	0%	3%
	3. Higher tariff	-2%	-7%	-3%	0%	5%
	All	2%	-6%	-3%	0%	2%

D.5.31 Applications by domicile and tariff group of institution : England

Difference between cycle and 2014 cycle

- 1. Lower tariff
- 2. Medium tariff
- 3. Higher tariff



D.5.32 Applications by domicile and tariff group of institution : England

Domicile of applicant and tariff group of institution		2011	2012	2013	2014	2015
England	1. Lower tariff	764,850	692,820	697,330	720,040	703,630
	2. Medium tariff	581,890	511,210	529,820	552,740	566,880
	3. Higher tariff	521,800	487,060	512,340	532,850	556,190
	All	1,868,540	1,691,080	1,739,490	1,805,630	1,826,710

D.5.33 Applications by domicile and tariff group of institution : England

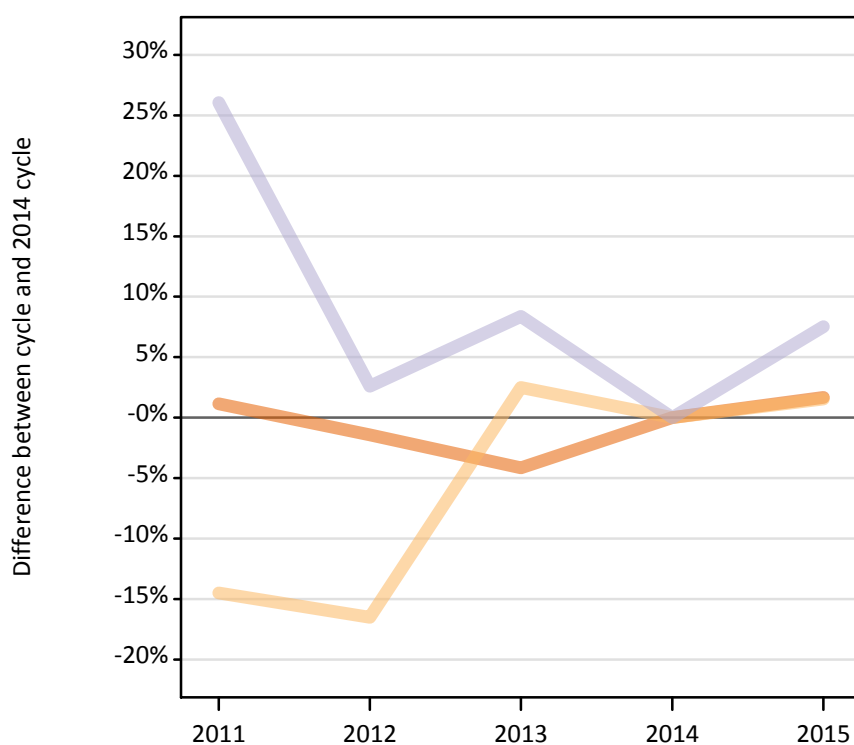
Difference between cycle and 2014 cycle

Domicile of applicant and tariff group of institution		2011	2012	2013	2014	2015
England	1. Lower tariff	6%	-4%	-3%	0%	-2%
	2. Medium tariff	5%	-8%	-4%	0%	3%
	3. Higher tariff	-2%	-9%	-4%	0%	4%
	All	3%	-6%	-4%	0%	1%

D.5.34 Applications by domicile and tariff group of institution : Northern Ireland

Difference between cycle and 2014 cycle

- 1. Lower tariff
- 2. Medium tariff
- 3. Higher tariff



D.5.35 Applications by domicile and tariff group of institution : Northern Ireland

Domicile of applicant and tariff group of institution		2011	2012	2013	2014	2015
Northern Ireland	1. Lower tariff	42,950	41,860	40,700	42,470	43,180
	2. Medium tariff	28,370	27,700	34,010	33,180	33,690
	3. Higher tariff	16,040	13,060	13,790	12,730	13,680
	All	87,360	82,610	88,500	88,370	90,550

D.5.36 Applications by domicile and tariff group of institution : Northern Ireland

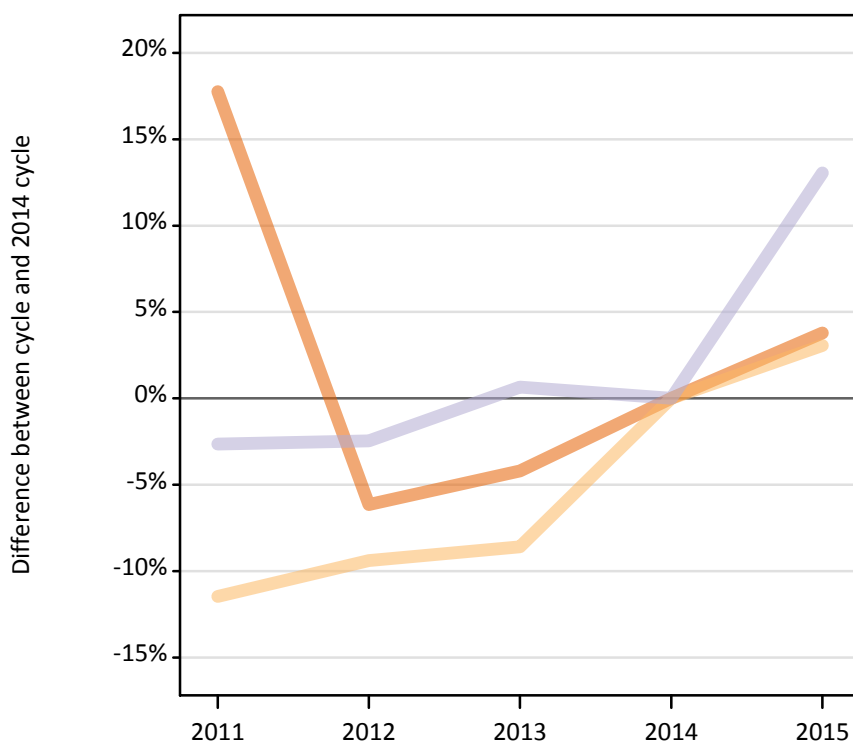
Difference between cycle and 2014 cycle

Domicile of applicant and tariff group of institution		2011	2012	2013	2014	2015
Northern Ireland	1. Lower tariff	1%	-1%	-4%	0%	2%
	2. Medium tariff	-14%	-17%	3%	0%	2%
	3. Higher tariff	26%	3%	8%	0%	8%
	All	-1%	-7%	0%	0%	2%

D.5.37 Applications by domicile and tariff group of institution : Scotland

Difference between cycle and 2014 cycle

- 1. Lower tariff
- 2. Medium tariff
- 3. Higher tariff



D.5.38 Applications by domicile and tariff group of institution : Scotland

Domicile of applicant and tariff group of institution		2011	2012	2013	2014	2015
Scotland	1. Lower tariff	2,800	2,230	2,280	2,380	2,470
	2. Medium tariff	72,570	74,280	74,930	81,970	84,480
	3. Higher tariff	84,110	84,280	86,960	86,400	97,670
	All	159,480	160,790	164,170	170,750	184,630

D.5.39 Applications by domicile and tariff group of institution : Scotland

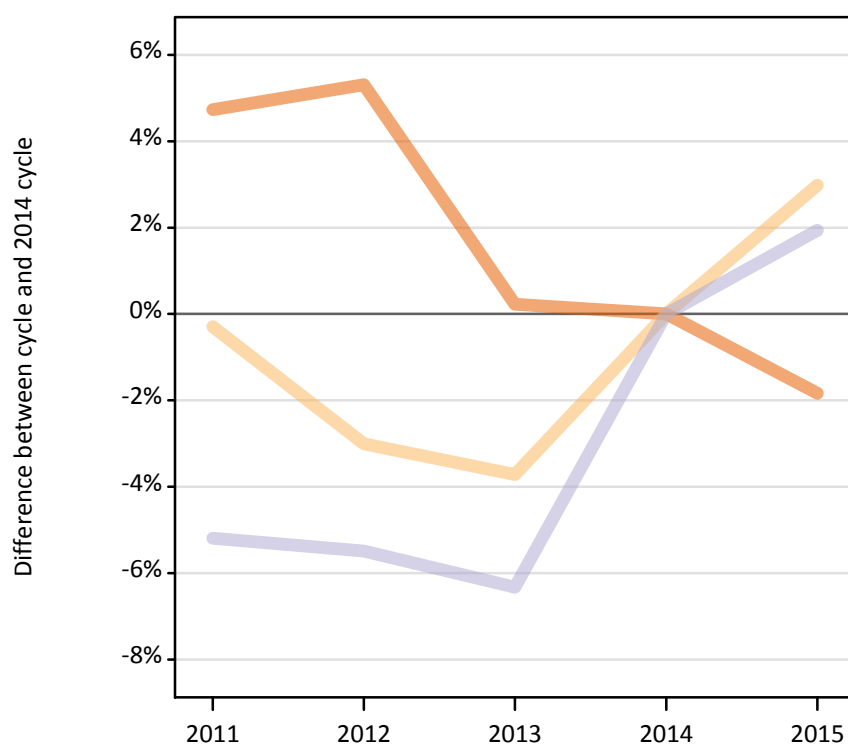
Difference between cycle and 2014 cycle

Domicile of applicant and tariff group of institution		2011	2012	2013	2014	2015
Scotland	1. Lower tariff	18%	-6%	-4%	0%	4%
	2. Medium tariff	-11%	-9%	-9%	0%	3%
	3. Higher tariff	-3%	-2%	1%	0%	13%
	All	-7%	-6%	-4%	0%	8%

D.5.40 Applications by domicile and tariff group of institution : Wales

Difference between cycle and 2014 cycle

- 1. Lower tariff
- 2. Medium tariff
- 3. Higher tariff



D.5.41 Applications by domicile and tariff group of institution : Wales

Domicile of applicant and tariff group of institution		2011	2012	2013	2014	2015
Wales	1. Lower tariff	35,810	36,010	34,270	34,190	33,570
	2. Medium tariff	27,840	27,080	26,880	27,920	28,760
	3. Higher tariff	24,560	24,490	24,270	25,910	26,410
	All	88,210	87,580	85,420	88,020	88,730

D.5.42 Applications by domicile and tariff group of institution : Wales

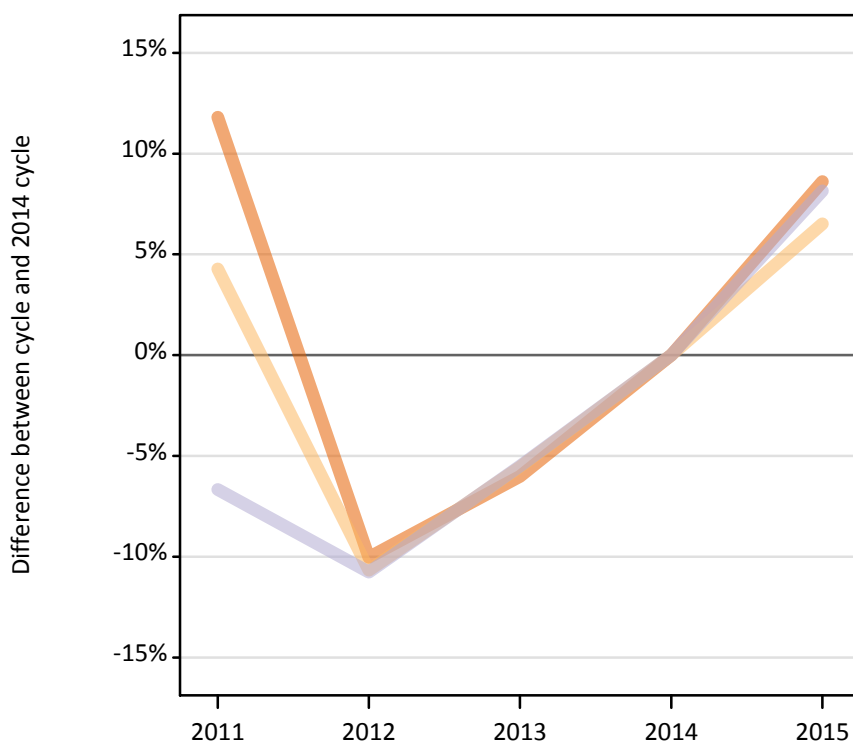
Difference between cycle and 2014 cycle

Domicile of applicant and tariff group of institution		2011	2012	2013	2014	2015
Wales	1. Lower tariff	5%	5%	0%	0%	-2%
	2. Medium tariff	-0%	-3%	-4%	0%	3%
	3. Higher tariff	-5%	-5%	-6%	0%	2%
	All	0%	-1%	-3%	0%	1%

D.5.43 Applications by domicile and tariff group of institution : EU (excluding UK)

Difference between cycle and 2014 cycle

- 1. Lower tariff
- 2. Medium tariff
- 3. Higher tariff



D.5.44 Applications by domicile and tariff group of institution : EU (excluding UK)

Domicile of applicant and tariff group of institution		2011	2012	2013	2014	2015
EU (excluding UK)	1. Lower tariff	43,170	34,740	36,290	38,610	41,940
	2. Medium tariff	51,280	43,930	46,450	49,180	52,380
	3. Higher tariff	82,850	79,220	83,880	88,770	96,010
	All	177,300	157,890	166,620	176,560	190,330

D.5.45 Applications by domicile and tariff group of institution : EU (excluding UK)

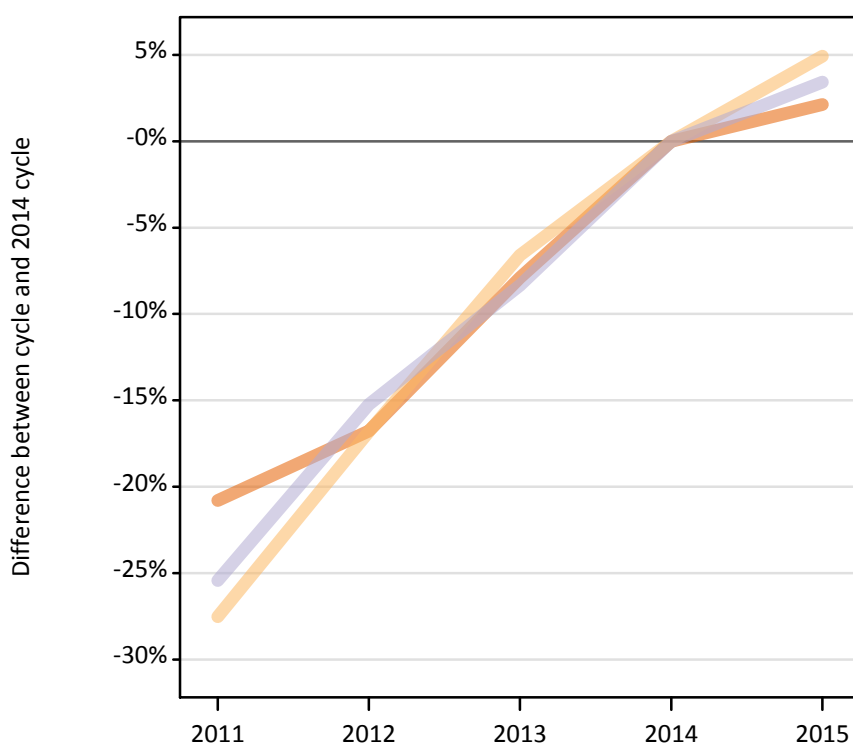
Difference between cycle and 2014 cycle

Domicile of applicant and tariff group of institution		2011	2012	2013	2014	2015
EU (excluding UK)	1. Lower tariff	12%	-10%	-6%	0%	9%
	2. Medium tariff	4%	-11%	-6%	0%	7%
	3. Higher tariff	-7%	-11%	-6%	0%	8%
	All	0%	-11%	-6%	0%	8%

D.5.46 Applications by domicile and tariff group of institution : Not EU

Difference between cycle and 2014 cycle

- 1. Lower tariff
- 2. Medium tariff
- 3. Higher tariff



D.5.47 Applications by domicile and tariff group of institution : Not EU

Domicile of applicant and tariff group of institution		2011	2012	2013	2014	2015
Not EU	1. Lower tariff	20,190	21,220	23,480	25,490	26,040
	2. Medium tariff	39,600	45,450	51,030	54,640	57,330
	3. Higher tariff	107,290	121,950	131,880	143,880	148,810
	All	167,070	188,620	206,390	224,010	232,180

D.5.48 Applications by domicile and tariff group of institution : Not EU

Difference between cycle and 2014 cycle

Domicile of applicant and tariff group of institution		2011	2012	2013	2014	2015
Not EU	1. Lower tariff	-21%	-17%	-8%	0%	2%
	2. Medium tariff	-28%	-17%	-7%	0%	5%
	3. Higher tariff	-25%	-15%	-8%	0%	3%
	All	-25%	-16%	-8%	0%	4%

D.5.49 Technical notes and definitions

Applicants have been able to submit applications for all 2015 courses since early September.

In 2015, around 125 courses relating to teacher training that historically would only have been available through UCAS Teacher Training, and therefore not previously counted in the scope of this statistical release, were brought into the undergraduate UCAS scheme. These courses are all offered by providers based in Scotland and are in the JACS3 detailed subject reporting grouping of 'X1'. The large majority of applications to these courses are from applicants living in Scotland.

To help comparisons through time, additional tables are available on the UCAS website that exclude any applications made by applicants to subject group 'X1' at Scottish providers. These tables provide a better 'like for like' comparison particularly when considering Scottish domiciled applicants and Scottish providers.

Counts of the number of applicants reported have been rounded to the nearest 10 applicants, this may result in instances where totals do not equal the sum of the components. Proportional changes have been rounded to the nearest whole percentage point.

Age

This statistical release uses country-specific age definitions which align with the cut off points for school/college cohorts within the different administrations of the UK. For England and Wales ages are defined on the 31 August, for Northern Ireland on the 1 July and for Scotland on the 28 February the following year. Defining ages in this way matches the assignment of children to school cohorts. For applicants outside of the UK the cohort cut off for England and Wales has been used.

Applicant

A person who has made an application in the UCAS system during the cycle reported, this includes those who submit applications for deferred entry.

Application

An application to a course at an institution made by an applicant. Applicants may make up to five applications.

Country of institution

The UK country of the institution applied to.

Domicile

Declared area of permanent residence. The Channel Islands and the Isle of Man have been assigned as 'Not EU'.

First time applicant

An applicant that did not apply to the UCAS scheme in the previous cycle.

Reapplicant

An applicant that applied to the UCAS scheme in the previous cycle.

Subject group

The JACS3 classification used to classify courses into subject groups.

Tariff group of institution

Institutions are grouped as higher, medium or lower tariff based on their average levels of attainment of their accepted applicants (summarised through UCAS Tariff points) in recent cycles. Each group of institutions accounted for around a third of all UK 18 year old acceptances in recent cycles.