

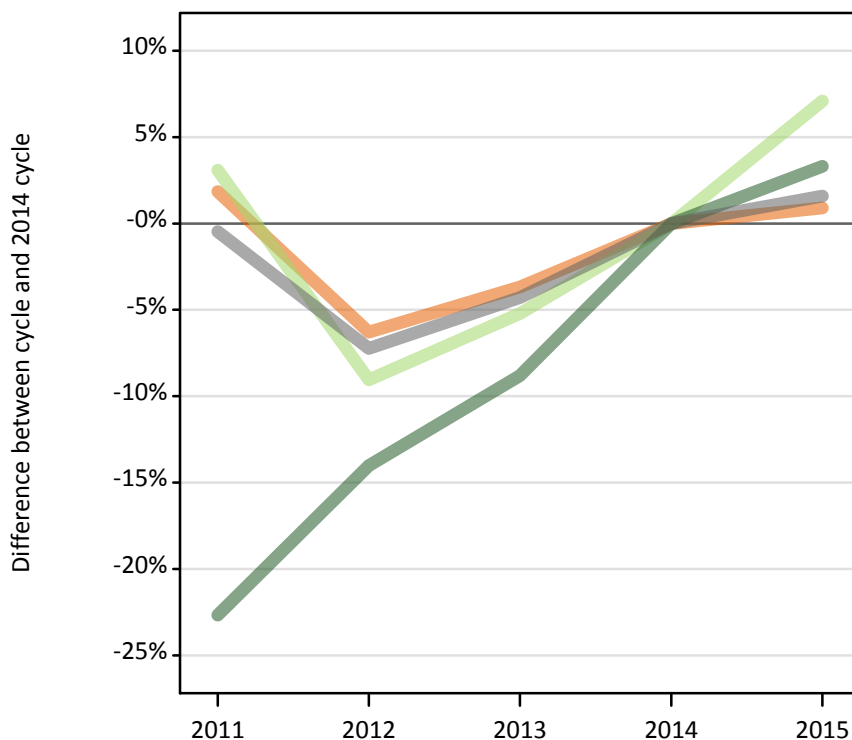
# March Deadline Context: Reapplicants

## Applicants by reapplication status at the 24 March deadline (No Scot. X1)

### FX.3.1 First-time applicants by domicile group

Difference between cycle and 2014 cycle

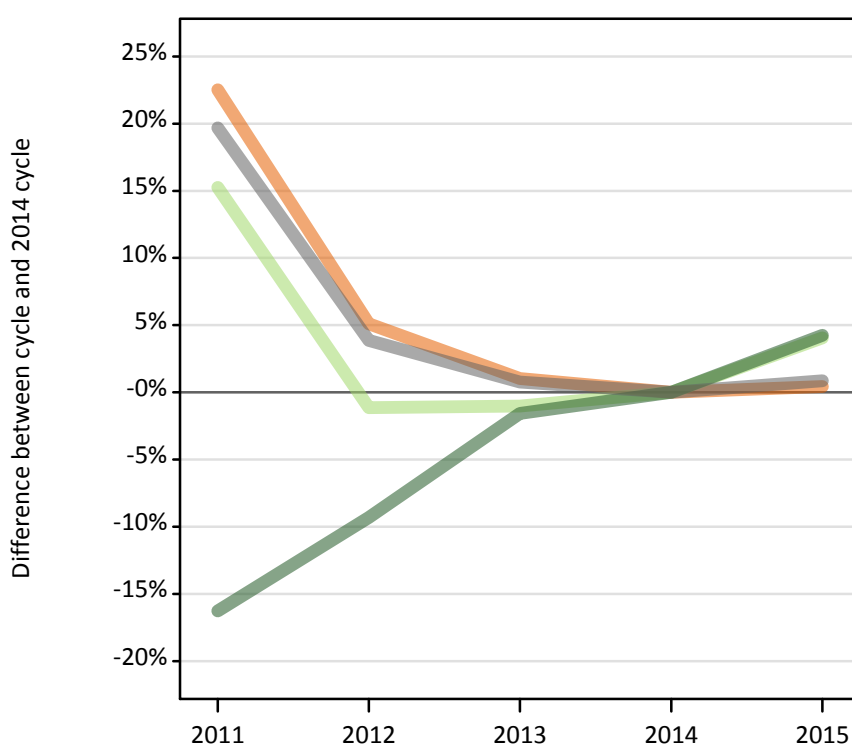
- UK
- EU (excluding UK)
- Not EU
- All domiciles



### FX.3.2 Previously applied applicants by domicile group

Difference between cycle and 2014 cycle

- UK
- EU (excluding UK)
- Not EU
- All domiciles



### FX.3.3 Applicants by whether previously applied and domicile group

Applicant status and domicile group		2011	2012	2013	2014	2015
First-time applicant	UK	466,410	429,210	441,180	457,980	462,130
	EU (excluding UK)	40,230	35,490	36,990	39,020	41,790
	Not EU	41,800	46,480	49,290	54,060	55,840
	All domiciles	548,450	511,180	527,460	551,060	559,760
Previously applied	UK	66,820	57,320	55,100	54,540	54,780
	EU (excluding UK)	3,520	3,020	3,020	3,060	3,180
	Not EU	3,300	3,570	3,880	3,940	4,110
	All domiciles	73,640	63,920	62,010	61,530	62,060
All	UK	533,230	486,530	496,280	512,520	516,910
	EU (excluding UK)	43,750	38,510	40,010	42,080	44,970
	Not EU	45,100	50,060	53,170	58,000	59,950
	All domiciles	622,090	575,090	589,470	612,590	621,830

### FX.3.4 Applicants by whether previously applied and domicile group

Difference between cycle and 2014 cycle

Applicant status and domicile group		2011	2012	2013	2014	2015
First-time applicant	UK	2%	-6%	-4%	0%	1%
	EU (excluding UK)	3%	-9%	-5%	0%	7%
	Not EU	-23%	-14%	-9%	0%	3%
	All domiciles	-0%	-7%	-4%	0%	2%
Previously applied	UK	23%	5%	1%	0%	0%
	EU (excluding UK)	15%	-1%	-1%	0%	4%
	Not EU	-16%	-9%	-2%	0%	4%
	All domiciles	20%	4%	1%	0%	1%
All	UK	4%	-5%	-3%	0%	1%
	EU (excluding UK)	4%	-8%	-5%	0%	7%
	Not EU	-22%	-14%	-8%	0%	3%
	All domiciles	2%	-6%	-4%	0%	2%

### FX.3.5 First-time applicants by UK country of domicile

Difference between cycle and 2014 cycle

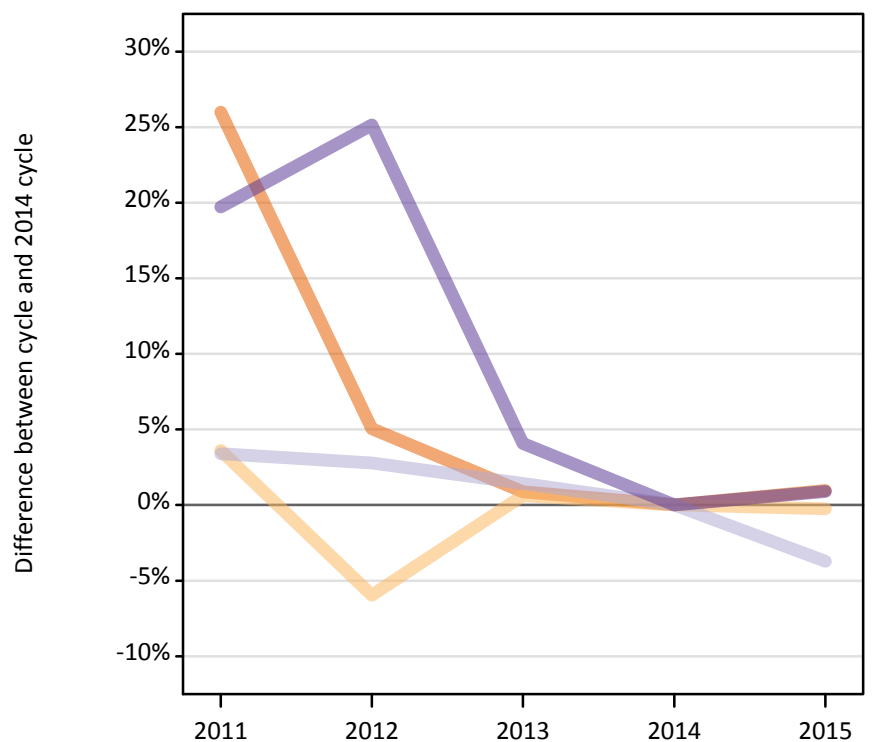
- England
- Northern Ireland
- Scotland
- Wales



### FX.3.6 Previously applied applicants by UK country of domicile

Difference between cycle and 2014 cycle

- England
- Northern Ireland
- Scotland
- Wales



### FX.3.7 Applicants by first-time and previously applied and UK country of domicile

Applicant status and domicile group		2011	2012	2013	2014	2015
First-time applicant	England	393,360	358,240	368,810	383,630	386,570
	Northern Ireland	17,160	16,560	17,560	17,530	17,940
	Scotland	35,720	34,900	35,530	36,860	37,660
	Wales	20,170	19,520	19,280	19,960	19,960
	UK	466,410	429,210	441,180	457,980	462,130
Previously applied	England	56,220	46,870	45,010	44,620	45,050
	Northern Ireland	2,470	2,240	2,400	2,380	2,370
	Scotland	5,630	5,600	5,530	5,450	5,250
	Wales	2,500	2,610	2,170	2,090	2,110
	UK	66,820	57,320	55,100	54,540	54,780
All	England	449,580	405,110	413,820	428,250	431,620
	Northern Ireland	19,630	18,790	19,960	19,910	20,320
	Scotland	41,360	40,500	41,060	42,310	42,910
	Wales	22,670	22,130	21,450	22,050	22,060
	UK	533,230	486,530	496,280	512,520	516,910

### FX.3.8 Applicants by first-time and previously applied and UK country of domicile

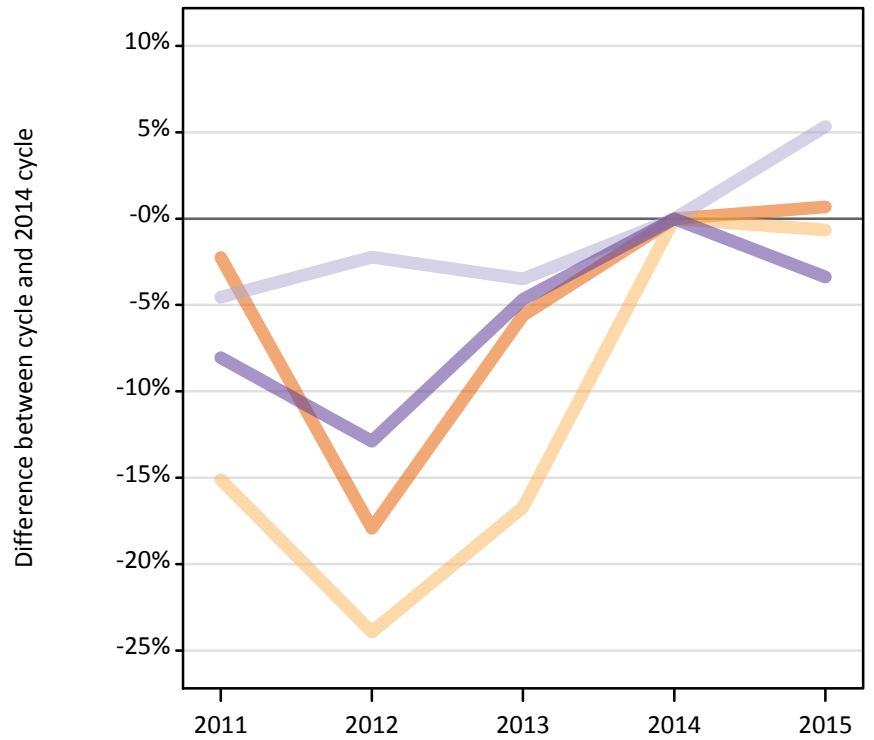
Difference between cycle and 2014 cycle

Applicant status and domicile group		2011	2012	2013	2014	2015
First-time applicant	England	3%	-7%	-4%	0%	1%
	Northern Ireland	-2%	-6%	0%	0%	2%
	Scotland	-3%	-5%	-4%	0%	2%
	Wales	1%	-2%	-3%	0%	-0%
	UK	2%	-6%	-4%	0%	1%
Previously applied	England	26%	5%	1%	0%	1%
	Northern Ireland	4%	-6%	1%	0%	-0%
	Scotland	3%	3%	1%	0%	-4%
	Wales	20%	25%	4%	0%	1%
	UK	23%	5%	1%	0%	0%
All	England	5%	-5%	-3%	0%	1%
	Northern Ireland	-1%	-6%	0%	0%	2%
	Scotland	-2%	-4%	-3%	0%	1%
	Wales	3%	0%	-3%	0%	0%
	UK	4%	-5%	-3%	0%	1%

### FX.3.9 19 year old first-time applicants by UK country of domicile

Difference between cycle and 2014 cycle

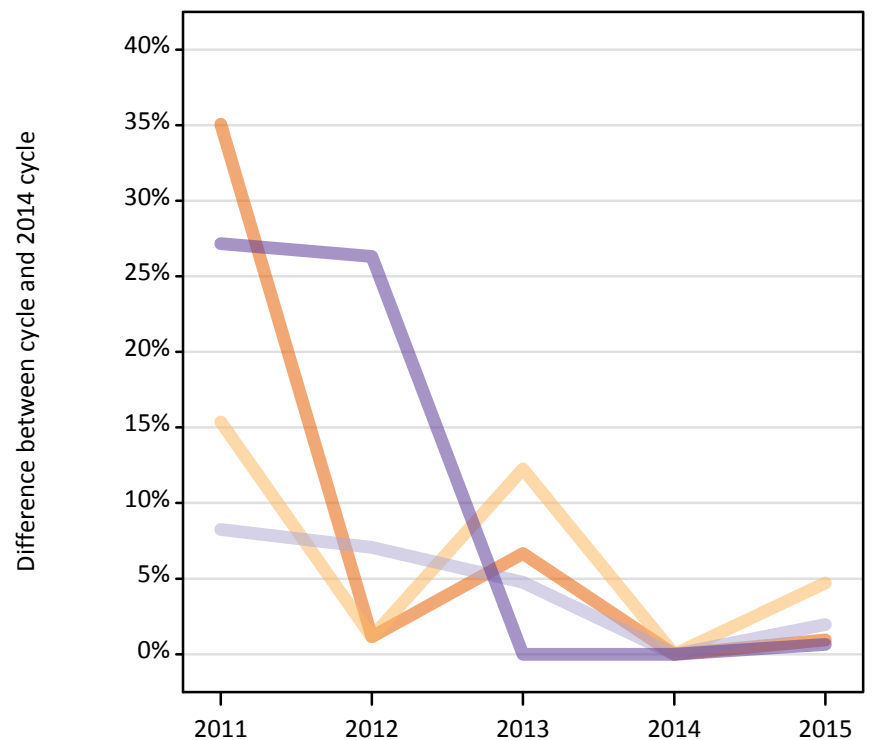
- England
- Northern Ireland
- Scotland
- Wales



### FX.3.10 19 year old previously applied applicants by UK country of domicile

Difference between cycle and 2014 cycle

- England
- Northern Ireland
- Scotland
- Wales



### FX.3.11 19 year old applicants by first-time and previously applied and UK country of domicile

Applicant status and domicile group		2011	2012	2013	2014	2015
First-time applicant	England	60,050	50,410	57,990	61,430	61,840
	Northern Ireland	1,310	1,170	1,280	1,540	1,530
	Scotland	2,900	2,970	2,930	3,040	3,200
	Wales	2,750	2,610	2,860	3,000	2,890
	UK	67,010	57,160	65,060	69,000	69,460
Previously applied	England	30,930	23,160	24,420	22,900	23,110
	Northern Ireland	1,710	1,500	1,670	1,480	1,550
	Scotland	2,530	2,500	2,450	2,340	2,380
	Wales	1,370	1,360	1,080	1,080	1,080
	UK	36,530	28,520	29,610	27,790	28,130
All	England	90,970	73,570	82,410	84,320	84,950
	Northern Ireland	3,020	2,670	2,950	3,030	3,090
	Scotland	5,430	5,470	5,380	5,370	5,580
	Wales	4,120	3,970	3,930	4,070	3,980
	UK	103,540	85,680	94,670	96,790	97,590

### FX.3.12 19 year old applicants by first-time and previously applied and UK country of domicile

Difference between cycle and 2014 cycle

Applicant status and domicile group		2011	2012	2013	2014	2015
First-time applicant	England	-2%	-18%	-6%	0%	1%
	Northern Ireland	-15%	-24%	-17%	0%	-1%
	Scotland	-5%	-2%	-3%	0%	5%
	Wales	-8%	-13%	-5%	0%	-3%
	UK	-3%	-17%	-6%	0%	1%
Previously applied	England	35%	1%	7%	0%	1%
	Northern Ireland	15%	1%	12%	0%	5%
	Scotland	8%	7%	5%	0%	2%
	Wales	27%	26%	0%	0%	1%
	UK	31%	3%	7%	0%	1%
All	England	8%	-13%	-2%	0%	1%
	Northern Ireland	-0%	-12%	-3%	0%	2%
	Scotland	1%	2%	0%	0%	4%
	Wales	1%	-3%	-3%	0%	-2%
	UK	7%	-11%	-2%	0%	1%

### FX.3.13 Technical notes and definitions

These additional tables have been produced to help comparisons through time, particularly when considering Scottish domiciled applicants and Scottish providers.

In 2015, a set of courses relating to teacher training that historically would only have been available through UCAS Teacher Training, and therefore not previously counted in the scope of this statistical release, were brought into the undergraduate UCAS scheme. These courses are all offered by providers based in Scotland and are in the JACS3 detailed subject reporting grouping of 'X1'. The large majority of applications to these courses are from applicants living in Scotland.

These additional tables exclude any applications made by applicants to subject group 'X1' at Scottish providers and provide a better 'like for like' comparison particularly when considering Scottish domiciled applicants and Scottish providers. The primary deadline applicant statistics which include all applications to Scottish providers are available upon the UCAS website.

Applicants have been able to submit applications for all 2015 courses since early September.

People who submit their applications to UCAS by the January deadline are considered 'on time' applicants for the large majority of courses offered through UCAS. Some art and design courses have a later deadline of 24 March. Almost all main scheme applications have been received by the 24 March deadline.

Counts of the number of applicants reported have been rounded to the nearest 10 applicants, this may result in instances where totals do not equal the sum of the components. Proportional changes have been rounded to the nearest whole percentage point.

#### Age

This statistical release uses country-specific age definitions which align with the cut off points for school/college cohorts within the different administrations of the UK. For England and Wales ages are defined on the 31 August, for Northern Ireland on the 1 July and for Scotland on the 28 February the following year. Defining ages in this way matches the assignment of children to school cohorts. For applicants outside of the UK the cohort cut off for England and Wales has been used.

#### Applicant

A person who has made an application in the UCAS system during the cycle reported, this includes those who submit applications for deferred entry. RPAs are excluded.

#### Application

An application to a course at an provider made by an applicant in the UCAS main scheme. Applicants may make up to five main scheme applications.

#### Country of provider

An applicant may be counted once for each provider country they have applied to in the main scheme. If an applicant has applied to providers in multiple countries then the applicant is counted once within each country of provider applied to.

This statistical release excludes a small number of applications to a provider based in the EU.

#### Domicile

Declared area of permanent residence. The Channel Islands and the Isle of Man have been assigned as 'Not EU'.

#### First time applicant

An applicant that did not apply to the UCAS scheme in the previous cycle.

#### Main scheme

The main UCAS application scheme through which up to five providers/courses can be applied to. This opens in September and closes to new applications on 30 June the following year.

#### Reapplicant

An applicant that applied to the UCAS scheme in the previous cycle.

### **FX.3.14 Technical notes and definitions: continued**

#### **Subject group**

The JACS3 classification used to classify courses into subject groups.

#### **Tariff group of provider**

Providers are grouped as higher, medium or lower tariff based on their average levels of attainment of their accepted applicants (summarised through UCAS Tariff points) in recent cycles. Each group of providers accounted for around a third of all UK 18 year old acceptances in recent cycles.