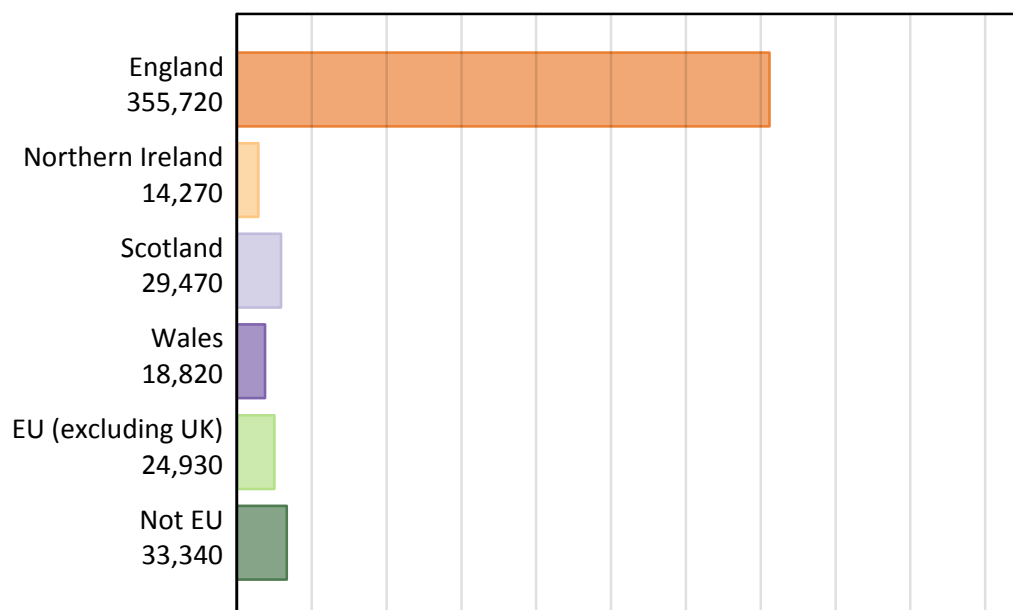


Analysis at 00:05 on Friday 29 August 2014 (15 days after A level results day)

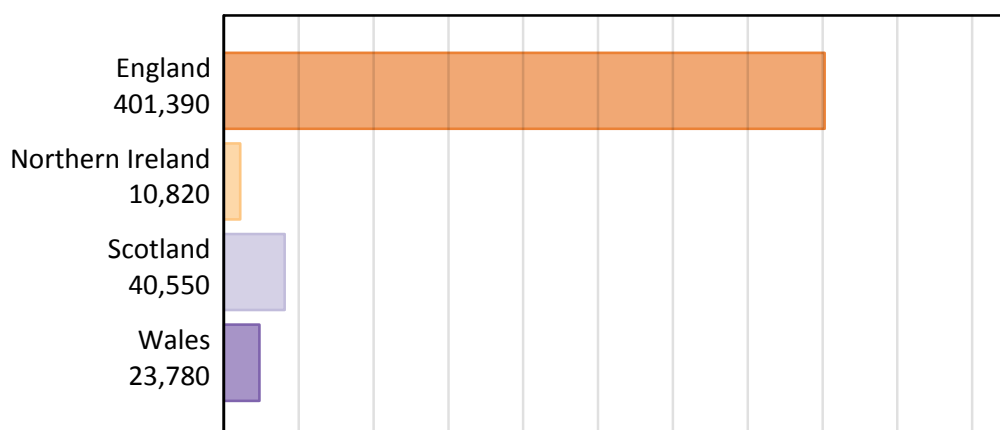
## B.1 Placed applicants by country of institution and domicile, 2014 cycle

Domicile of applicant	Country of institution				
	England	Northern Ireland	Scotland	Wales	UK
England	339,980	440	4,760	10,540	355,720
Northern Ireland	3,440	9,680	1,000	150	14,270
Scotland	1,460	20	27,930	60	29,470
Wales	7,950	10	110	10,760	18,820
EU (excluding UK)	19,210	470	4,230	1,020	24,930
Not EU	29,360	200	2,530	1,250	33,340
All	401,390	10,820	40,550	23,780	476,540

## B.2 Placed applicants by domicile group

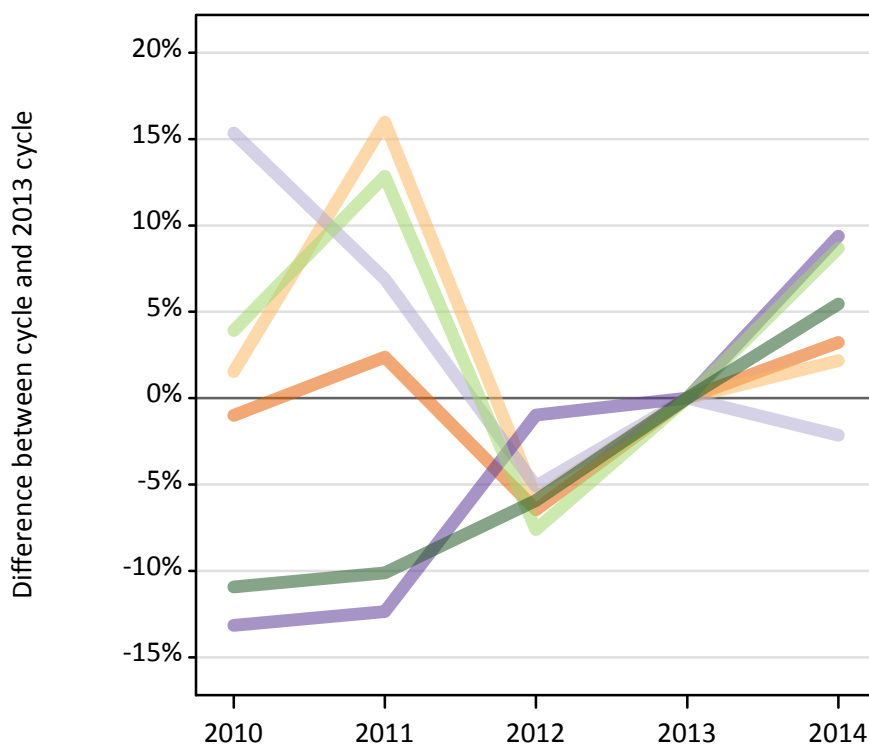
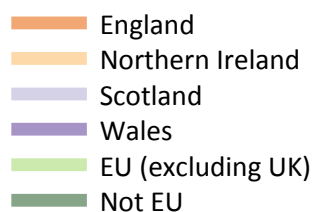


## B.3 Placed applicants by country of institution



#### B.4 Placed applicants at 15 days after A level results day: institutions in England

Selected applicant domiciles: difference between cycle and 2013 cycle (at 15 days after A level results day)



#### B.5 Placed applicants at 15 days after A level results day: institutions in England

Placed applicants by domicile (at 15 days after A level results day)

Domicile of applicant	2010	2011	2012	2013	2014
England	326,050	337,180	308,070	329,350	339,980
Northern Ireland	3,420	3,900	3,170	3,370	3,440
Scotland	1,720	1,600	1,420	1,490	1,460
Wales	6,310	6,370	7,190	7,260	7,950
EU (excluding UK)	18,370	19,950	16,330	17,680	19,210
Not EU	24,800	25,030	26,200	27,850	29,360

#### B.6 Placed applicants at 15 days after A level results day: institutions in England

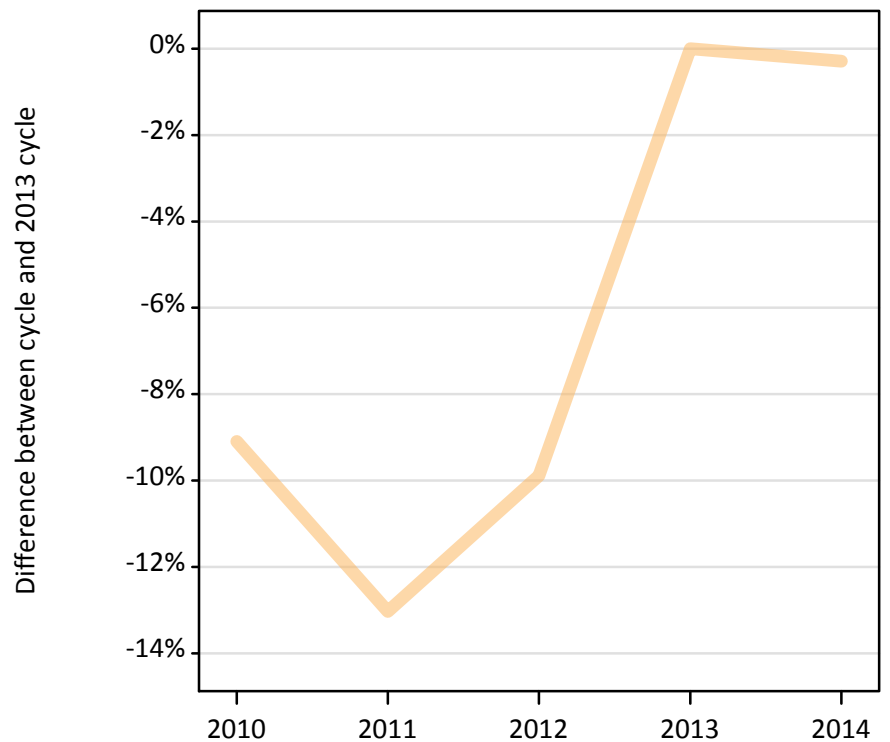
Selected applicant domiciles: difference between cycle and 2013 cycle (at 15 days after A level results day)

Domicile of applicant	2010	2011	2012	2013	2014
England	-1%	2%	-6%	0%	3%
Northern Ireland	2%	16%	-6%	0%	2%
Scotland	15%	7%	-5%	0%	-2%
Wales	-13%	-12%	-1%	0%	9%
EU (excluding UK)	4%	13%	-8%	0%	9%
Not EU	-11%	-10%	-6%	0%	5%

### B.7 Placed applicants at 15 days after A level results day: institutions in Northern Ireland

Selected applicant domiciles: difference between cycle and 2013 cycle (at 15 days after A level results day)

— Northern Ireland



### B.8 Placed applicants at 15 days after A level results day: institutions in Northern Ireland

Placed applicants by domicile (at 15 days after A level results day)

Domicile of applicant	2010	2011	2012	2013	2014
England	220	240	260	260	440
Northern Ireland	8,830	8,440	8,750	9,710	9,680
Scotland	20	20	30	20	20
Wales	10	10	0	10	10
EU (excluding UK)	600	430	420	440	470
Not EU	70	110	170	180	200

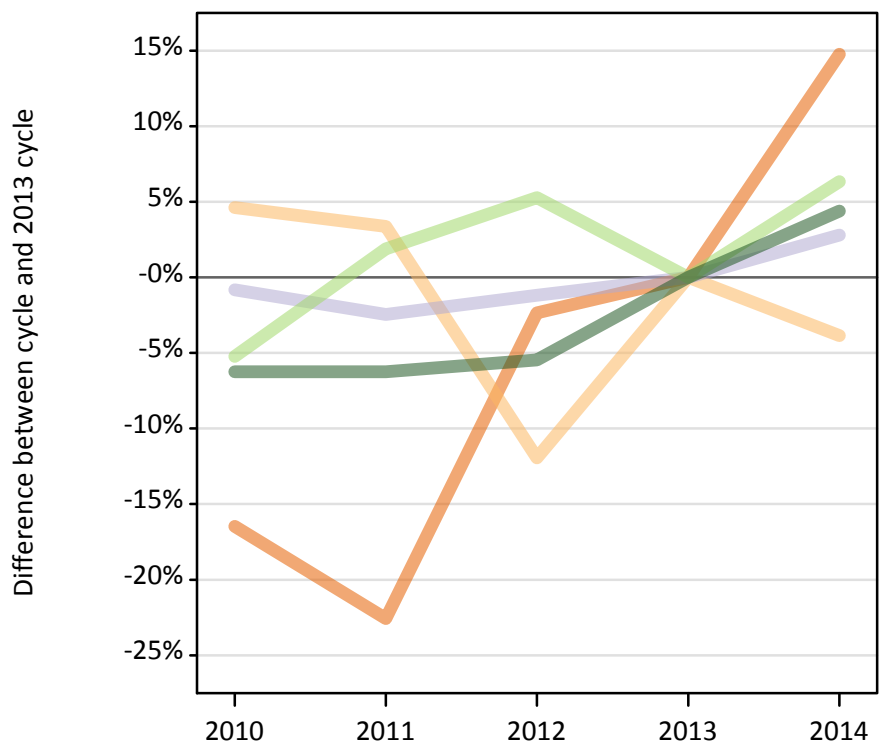
### B.9 Placed applicants at 15 days after A level results day: institutions in Northern Ireland

Selected applicant domiciles: difference between cycle and 2013 cycle (at 15 days after A level results day)

Domicile of applicant	2010	2011	2012	2013	2014
Northern Ireland	-9%	-13%	-10%	0%	-0%

### B.10 Placed applicants at 15 days after A level results day: institutions in Scotland

Selected applicant domiciles: difference between cycle and 2013 cycle (at 15 days after A level results day)



### B.11 Placed applicants at 15 days after A level results day: institutions in Scotland

Placed applicants by domicile (at 15 days after A level results day)

Domicile of applicant	2010	2011	2012	2013	2014
England	3,470	3,210	4,050	4,150	4,760
Northern Ireland	1,090	1,070	920	1,040	1,000
Scotland	26,940	26,500	26,850	27,170	27,930
Wales	90	90	120	110	110
EU (excluding UK)	3,770	4,060	4,190	3,980	4,230
Not EU	2,270	2,270	2,290	2,420	2,530

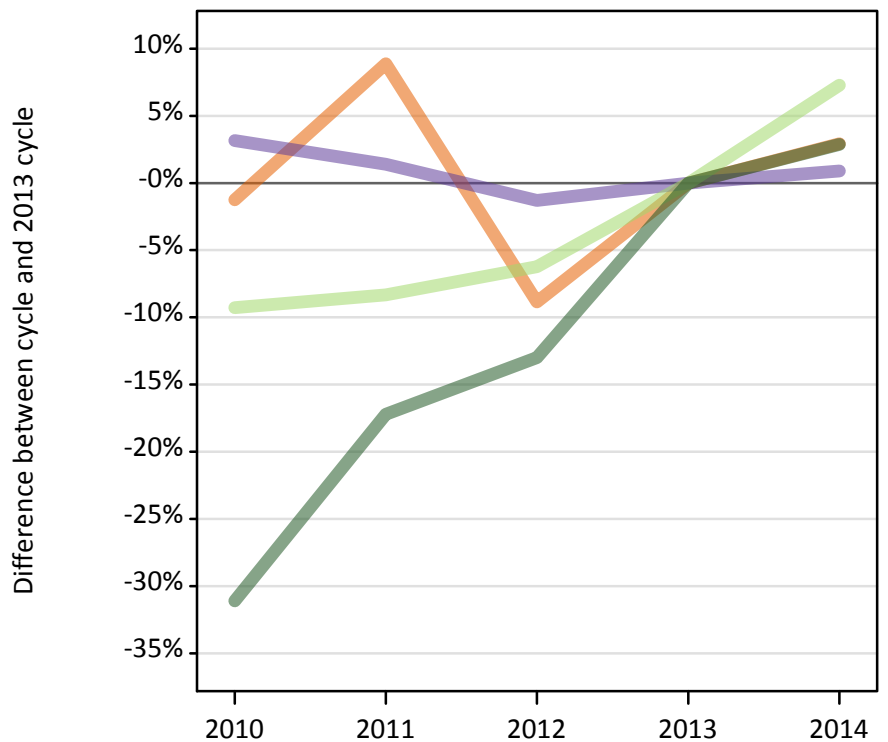
### B.12 Placed applicants at 15 days after A level results day: institutions in Scotland

Selected applicant domiciles: difference between cycle and 2013 cycle (at 15 days after A level results day)

Domicile of applicant	2010	2011	2012	2013	2014
England	-16%	-23%	-2%	0%	15%
Northern Ireland	5%	3%	-12%	0%	-4%
Scotland	-1%	-2%	-1%	0%	3%
EU (excluding UK)	-5%	2%	5%	0%	6%
Not EU	-6%	-6%	-5%	0%	4%

### B.13 Placed applicants at 15 days after A level results day: institutions in Wales

Selected applicant domiciles: difference between cycle and 2013 cycle (at 15 days after A level results day)



### B.14 Placed applicants at 15 days after A level results day: institutions in Wales

Placed applicants by domicile (at 15 days after A level results day)

Domicile of applicant	2010	2011	2012	2013	2014
England	10,110	11,150	9,330	10,240	10,540
Northern Ireland	160	200	140	160	150
Scotland	50	70	50	60	60
Wales	11,000	10,820	10,530	10,670	10,760
EU (excluding UK)	860	870	890	950	1,020
Not EU	840	1,010	1,060	1,220	1,250

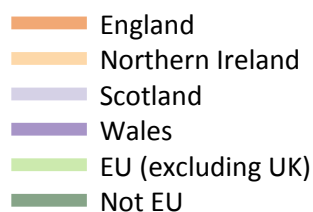
### B.15 Placed applicants at 15 days after A level results day: institutions in Wales

Selected applicant domiciles: difference between cycle and 2013 cycle (at 15 days after A level results day)

Domicile of applicant	2010	2011	2012	2013	2014
England	-1%	9%	-9%	0%	3%
Wales	3%	1%	-1%	0%	1%
EU (excluding UK)	-9%	-8%	-6%	0%	7%
Not EU	-31%	-17%	-13%	0%	3%

### B.16 Placed applicants at 15 days after A level results day: institutions in the UK

Selected applicant domiciles: difference between cycle and 2013 cycle (at 15 days after A level results day)



### B.17 Placed applicants at 15 days after A level results day: institutions in the UK

Placed applicants by domicile (at 15 days after A level results day)

Domicile of applicant	2010	2011	2012	2013	2014
England	339,840	351,790	321,710	344,000	355,720
Northern Ireland	13,500	13,630	12,980	14,270	14,270
Scotland	28,730	28,180	28,340	28,740	29,470
Wales	17,410	17,280	17,840	18,040	18,820
EU (excluding UK)	23,600	25,300	21,830	23,040	24,930
Not EU	27,980	28,420	29,710	31,660	33,340

### B.18 Placed applicants at 15 days after A level results day: institutions in the UK

Selected applicant domiciles: difference between cycle and 2013 cycle (at 15 days after A level results day)

Domicile of applicant	2010	2011	2012	2013	2014
England	-1%	2%	-6%	0%	3%
Northern Ireland	-5%	-5%	-9%	0%	-0%
Scotland	-0%	-2%	-1%	0%	3%
Wales	-3%	-4%	-1%	0%	4%
EU (excluding UK)	2%	10%	-5%	0%	8%
Not EU	-12%	-10%	-6%	0%	5%