

# Daily Clearing Analysis: Age

## Analysis at 00:05 on Monday 20 August 2018 (4 days after A level results day)

### C.1 Placed applicants by country of domicile and age group, 2018 cycle (4 days after A level results day)

Domicile of applicant	Age group				
	17 and under	18	19	20 to 24	25 and over
England	630	194,180	63,230	43,890	26,310
Northern Ireland	20	7,240	2,030	2,080	720
Scotland	500	14,550	4,430	7,970	6,280
Wales	20	9,830	3,170	2,560	1,950
UK	1,180	225,800	72,870	56,500	35,260

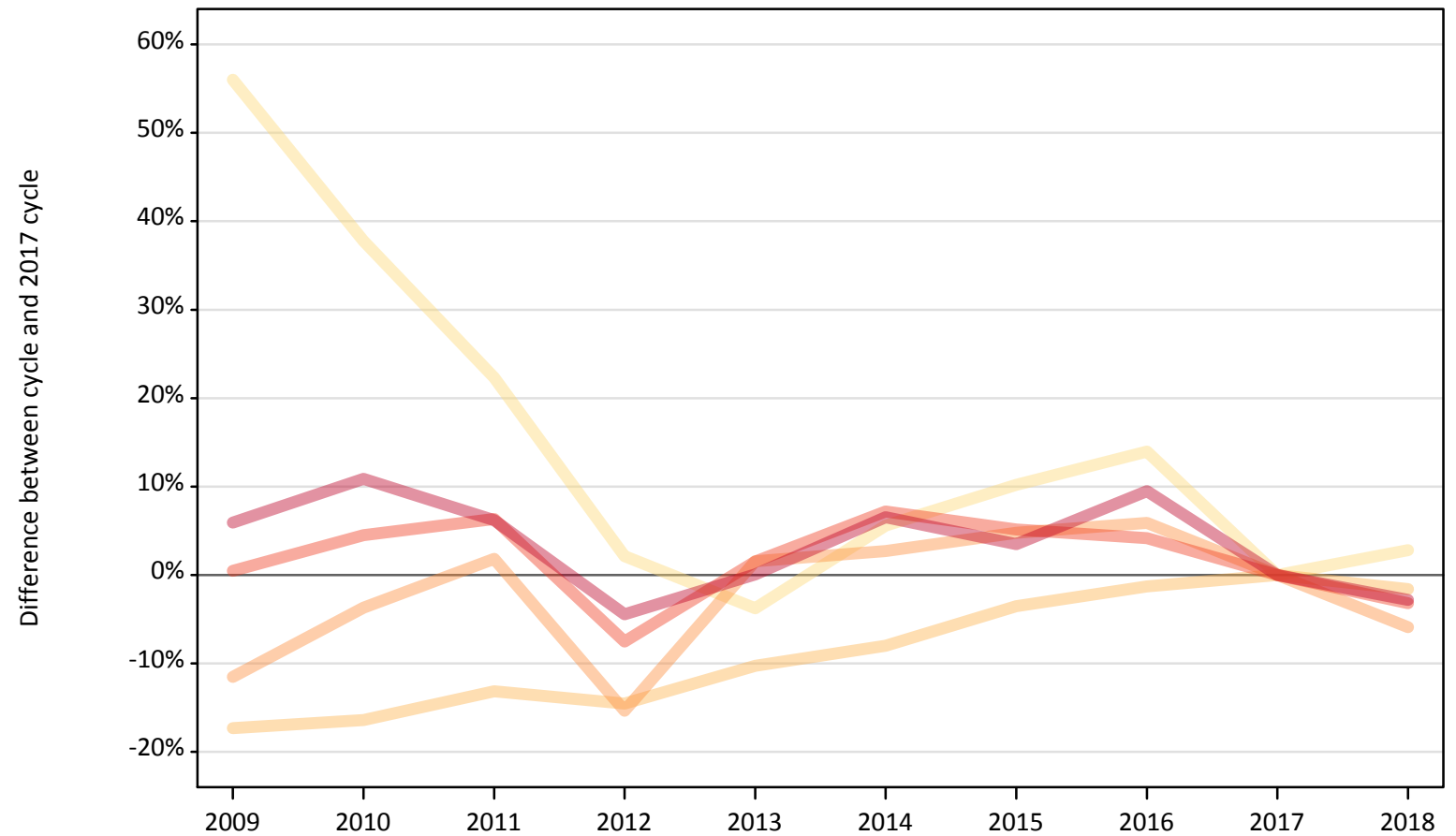
### C.2 Proportion of 18 year old population placed by country of domicile, 2018 cycle (4 days after A level results day)

Domicile of applicant	Age group	2018
England	18	31.9%
Northern Ireland	18	31.2%
Scotland	18	26.2%
Wales	18	28.6%

### C.3 Placed applicants from England by age group at 4 days after A level results day

Selected age groups: difference between cycle and 2017 cycle

- 17 and under
- 18
- 19
- 20 to 24
- 25 and over



Note: The percentage change is not plotted in the above chart for groups with fewer than 30 placed applicants in any one cycle.

#### C.4 Placed applicants from England by age group at 4 days after A level results day

All age groups

Domicile of applicant	Age group	2009	2010	2011	2012	2013	2014	2015	2016	2017	2018
England	17 and under	950	840	750	620	590	640	670	690	610	630
	18	163,120	164,930	171,390	168,600	177,060	181,560	190,350	194,810	197,330	194,180
	19	59,450	64,710	68,430	56,880	68,240	69,020	70,390	71,150	67,190	63,230
	20 to 24	45,540	47,370	48,200	41,920	46,010	48,580	47,670	47,220	45,330	43,890
	25 and over	28,690	30,030	28,750	25,880	27,100	28,850	28,020	29,650	27,080	26,310

#### C.5 Placed applicants from England by age group at 4 days after A level results day

Selected age groups: difference between cycle and 2017 cycle

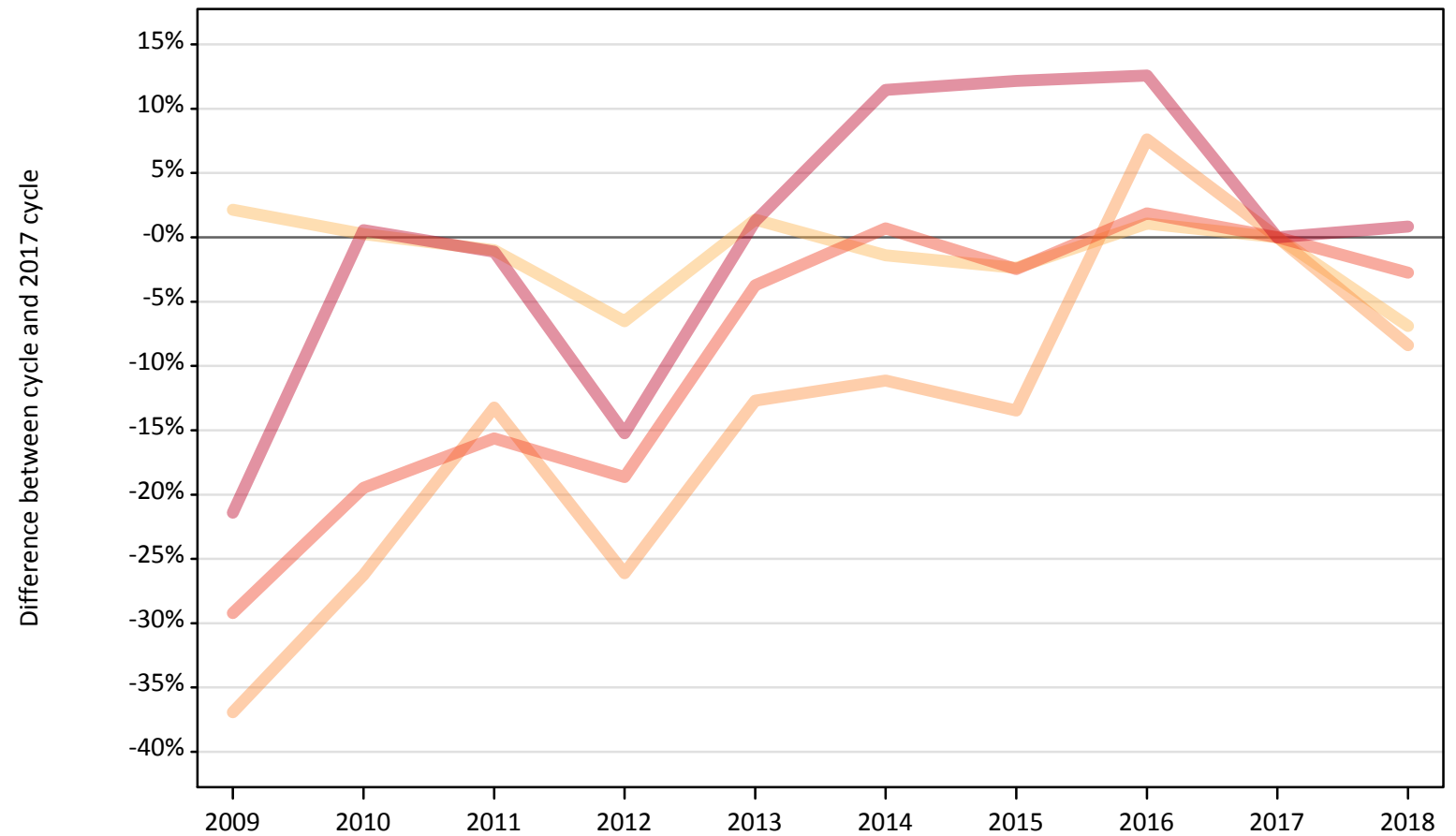
Domicile of applicant	Age group	2009	2010	2011	2012	2013	2014	2015	2016	2017	2018
England	17 and under	56%	38%	22%	2%	-4%	6%	10%	14%	0%	3%
	18	-17%	-16%	-13%	-15%	-10%	-8%	-4%	-1%	0%	-2%
	19	-12%	-4%	2%	-15%	2%	3%	5%	6%	0%	-6%
	20 to 24	0%	5%	6%	-8%	2%	7%	5%	4%	0%	-3%
	25 and over	6%	11%	6%	-4%	0%	7%	3%	9%	0%	-3%

Note: The percentage change is not recorded in the above table for groups with fewer than 10 placed applicants in that cycle or in the 2017 cycle.

## C.6 Placed applicants from Northern Ireland by age group at 4 days after A level results day

Selected age groups: difference between cycle and 2017 cycle

- 17 and under
- 18
- 19
- 20 to 24
- 25 and over



Note: The percentage change is not plotted in the above chart for groups with fewer than 30 placed applicants in any one cycle.

### C.7 Placed applicants from Northern Ireland by age group at 4 days after A level results day

All age groups

Domicile of applicant	Age group	2009	2010	2011	2012	2013	2014	2015	2016	2017	2018
Northern Ireland	17 and under	40	30	40	40	20	20	20	30	20	20
	18	7,940	7,800	7,700	7,270	7,880	7,670	7,590	7,860	7,780	7,240
	19	1,400	1,640	1,930	1,640	1,940	1,970	1,920	2,390	2,220	2,030
	20 to 24	1,520	1,730	1,810	1,740	2,060	2,160	2,090	2,180	2,140	2,080
	25 and over	560	720	710	610	720	800	800	810	720	720

### C.8 Placed applicants from Northern Ireland by age group at 4 days after A level results day

Selected age groups: difference between cycle and 2017 cycle

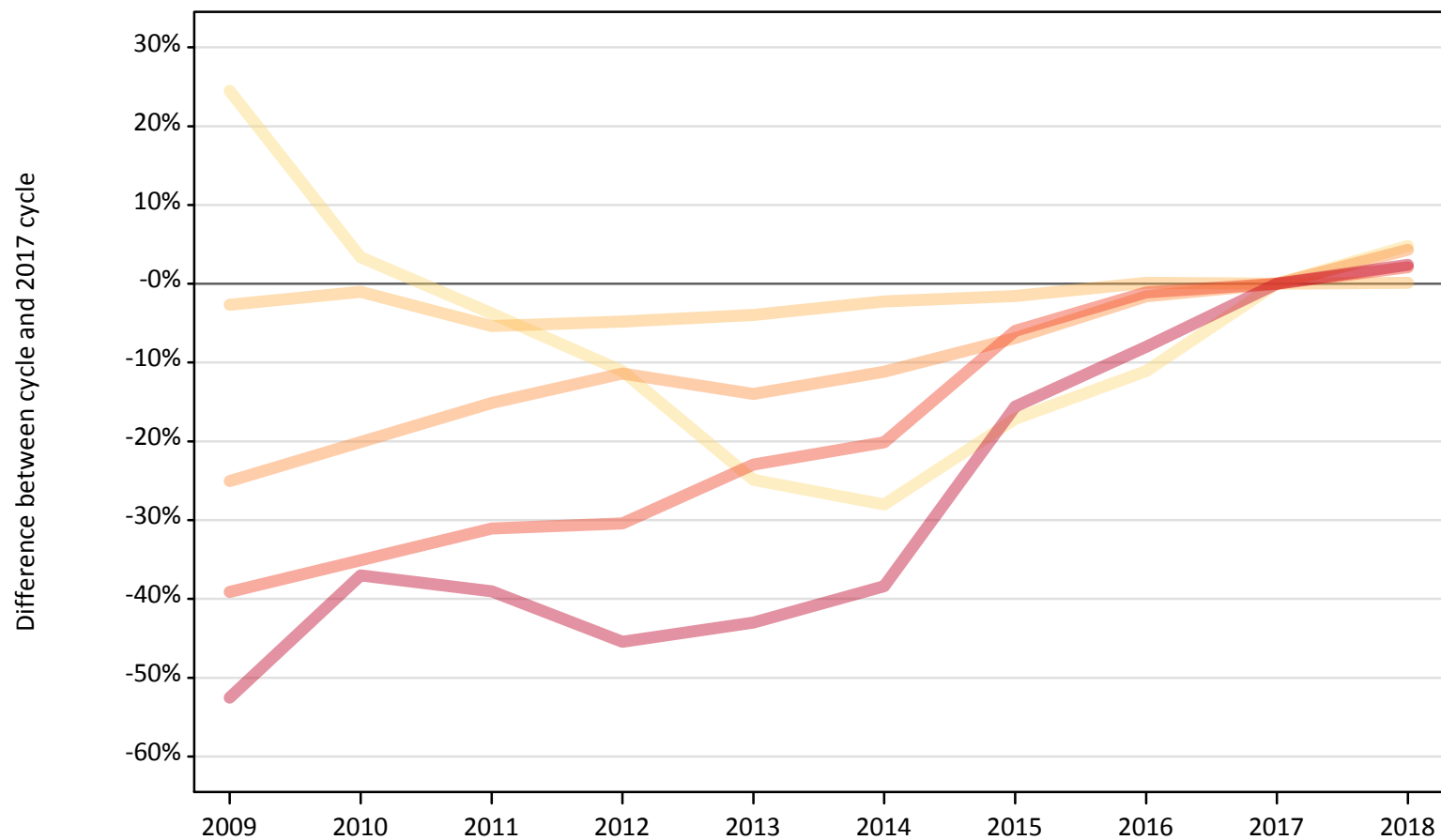
Domicile of applicant	Age group	2009	2010	2011	2012	2013	2014	2015	2016	2017	2018
Northern Ireland	17 and under	180%	120%	133%	167%	33%	7%	20%	107%	0%	60%
	18	2%	0%	-1%	-7%	1%	-1%	-2%	1%	0%	-7%
	19	-37%	-26%	-13%	-26%	-13%	-11%	-13%	8%	0%	-8%
	20 to 24	-29%	-19%	-16%	-19%	-4%	1%	-2%	2%	0%	-3%
	25 and over	-21%	1%	-1%	-15%	1%	11%	12%	13%	0%	1%

Note: The percentage change is not recorded in the above table for groups with fewer than 10 placed applicants in that cycle or in the 2017 cycle.

### C.9 Placed applicants from Scotland by age group at 4 days after A level results day

Selected age groups: difference between cycle and 2017 cycle

- 17 and under
- 18
- 19
- 20 to 24
- 25 and over



Note: The percentage change is not plotted in the above chart for groups with fewer than 30 placed applicants in any one cycle.

### C.10 Placed applicants from Scotland by age group at 4 days after A level results day

All age groups

Domicile of applicant	Age group	2009	2010	2011	2012	2013	2014	2015	2016	2017	2018
Scotland	17 and under	600	490	460	430	360	340	400	430	480	500
	18	14,150	14,390	13,750	13,840	13,960	14,210	14,310	14,550	14,530	14,550
	19	3,190	3,400	3,610	3,770	3,660	3,780	3,960	4,180	4,250	4,430
	20 to 24	4,750	5,070	5,380	5,430	6,010	6,230	7,340	7,720	7,800	7,970
	25 and over	2,910	3,860	3,740	3,340	3,490	3,780	5,170	5,640	6,130	6,280

### C.11 Placed applicants from Scotland by age group at 4 days after A level results day

Selected age groups: difference between cycle and 2017 cycle

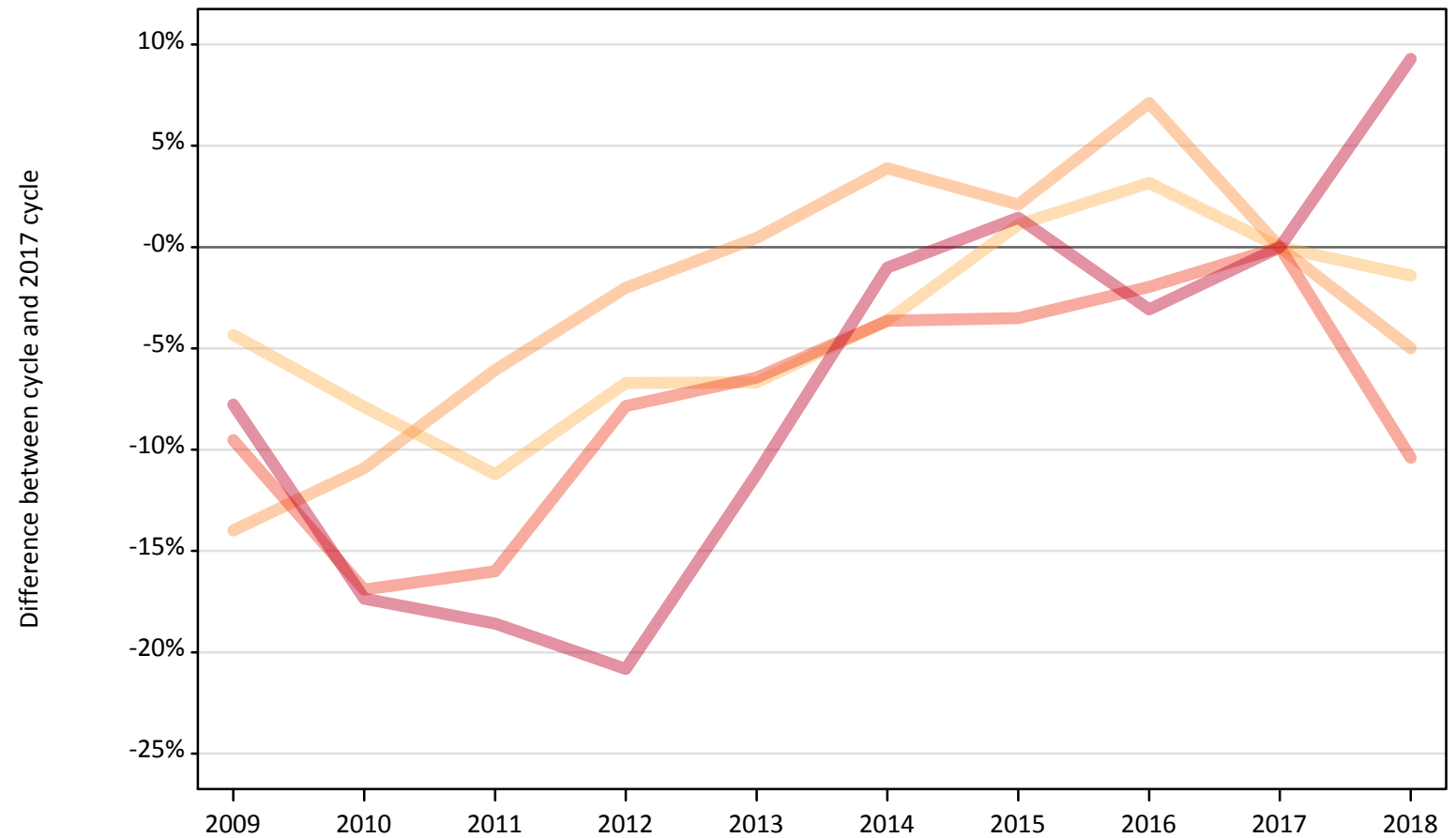
Domicile of applicant	Age group	2009	2010	2011	2012	2013	2014	2015	2016	2017	2018
Scotland	17 and under	24%	3%	-4%	-11%	-25%	-28%	-17%	-11%	0%	5%
	18	-3%	-1%	-5%	-5%	-4%	-2%	-2%	0%	0%	0%
	19	-25%	-20%	-15%	-11%	-14%	-11%	-7%	-2%	0%	4%
	20 to 24	-39%	-35%	-31%	-30%	-23%	-20%	-6%	-1%	0%	2%
	25 and over	-53%	-37%	-39%	-45%	-43%	-38%	-16%	-8%	0%	2%

Note: The percentage change is not recorded in the above table for groups with fewer than 10 placed applicants in that cycle or in the 2017 cycle.

### C.12 Placed applicants from Wales by age group at 4 days after A level results day

Selected age groups: difference between cycle and 2017 cycle

- 17 and under
- 18
- 19
- 20 to 24
- 25 and over



Note: The percentage change is not plotted in the above chart for groups with fewer than 30 placed applicants in any one cycle.



### C.13 Placed applicants from Wales by age group at 4 days after A level results day

All age groups

Domicile of applicant	Age group	2009	2010	2011	2012	2013	2014	2015	2016	2017	2018
Wales	17 and under	40	40	30	20	30	20	20	20	20	20
	18	9,540	9,180	8,850	9,300	9,300	9,610	10,080	10,280	9,970	9,830
	19	2,870	2,970	3,130	3,270	3,350	3,460	3,400	3,570	3,330	3,170
	20 to 24	2,580	2,370	2,400	2,630	2,670	2,750	2,760	2,800	2,860	2,560
	25 and over	1,650	1,480	1,460	1,420	1,590	1,770	1,810	1,730	1,790	1,950

### C.14 Placed applicants from Wales by age group at 4 days after A level results day

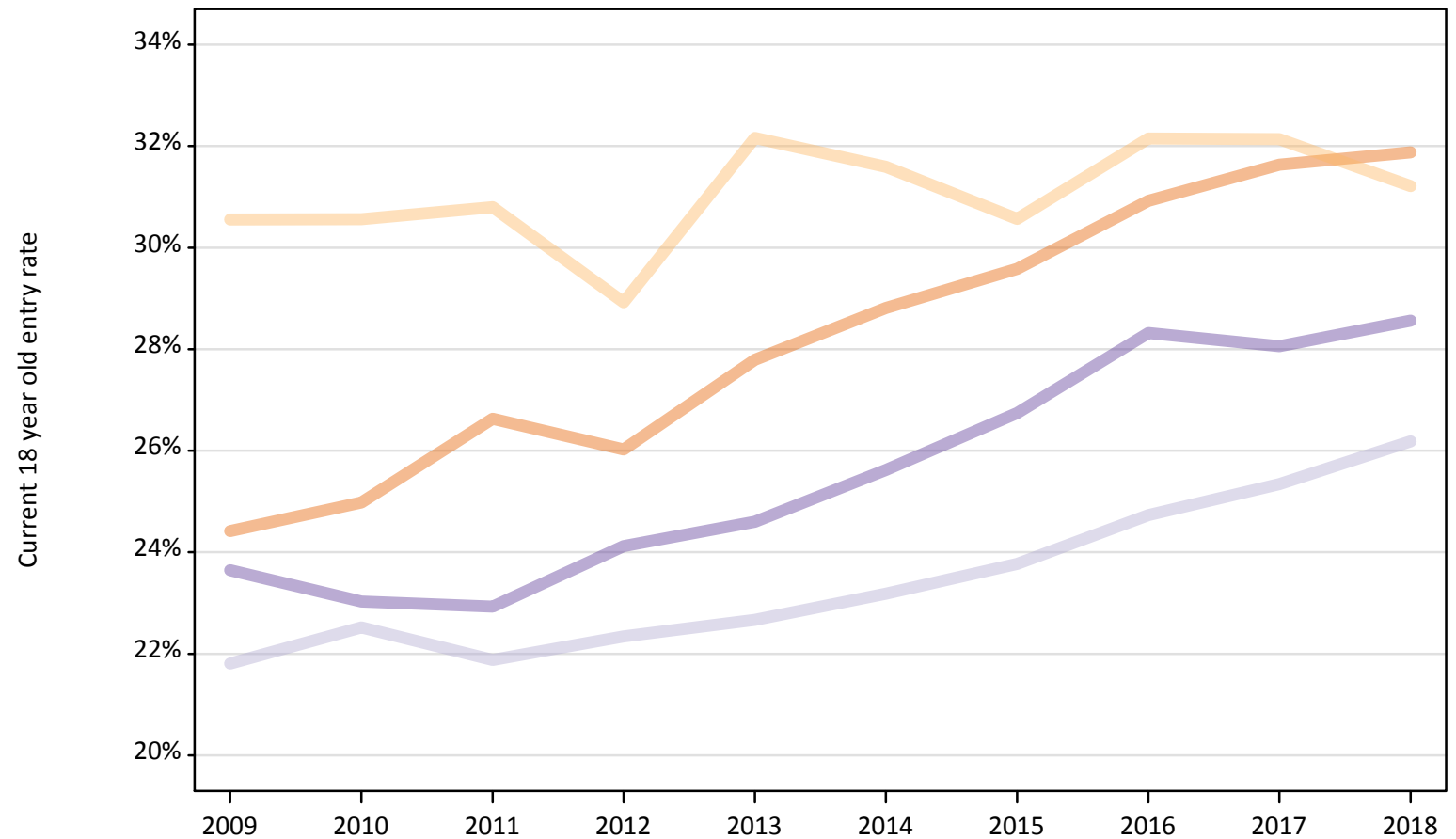
Selected age groups: difference between cycle and 2017 cycle

Domicile of applicant	Age group	2009	2010	2011	2012	2013	2014	2015	2016	2017	2018
Wales	17 and under	147%	133%	93%	27%	73%	40%	0%	47%	0%	60%
	18	-4%	-8%	-11%	-7%	-7%	-4%	1%	3%	0%	-1%
	19	-14%	-11%	-6%	-2%	0%	4%	2%	7%	0%	-5%
	20 to 24	-10%	-17%	-16%	-8%	-6%	-4%	-4%	-2%	0%	-10%
	25 and over	-8%	-17%	-19%	-21%	-11%	-1%	1%	-3%	0%	9%

Note: The percentage change is not recorded in the above table for groups with fewer than 10 placed applicants in that cycle or in the 2017 cycle.

### C.15 Entry rates for 18 year olds by UK country of domicile: 4 days after A level results day

Placed 18 year old applicants as a proportion of the 18 year old population



### C.16 Entry rates for 18 year olds by UK country of domicile: 4 days after A level results day

Placed 18 year old applicants as a proportion of the 18 year old population

Domicile of applicant	Age group	2009	2010	2011	2012	2013	2014	2015	2016	2017	2018
England	18	24.4%	25.0%	26.6%	26.0%	27.8%	28.8%	29.6%	30.9%	31.6%	31.9%
Northern Ireland	18	30.6%	30.6%	30.8%	28.9%	32.2%	31.6%	30.6%	32.1%	32.1%	31.2%
Scotland	18	21.8%	22.5%	21.9%	22.3%	22.7%	23.2%	23.8%	24.7%	25.3%	26.2%
Wales	18	23.6%	23.0%	22.9%	24.1%	24.6%	25.6%	26.7%	28.3%	28.1%	28.6%