

# Daily Clearing Analysis: Age

## Analysis at 00:05 on Tuesday 21 August 2018 (5 days after A level results day)

### C.1 Placed applicants by country of domicile and age group, 2018 cycle (5 days after A level results day)

Domicile of applicant	Age group				
	17 and under	18	19	20 to 24	25 and over
England	650	197,240	64,290	44,670	26,770
Northern Ireland	20	7,350	2,070	2,150	730
Scotland	500	14,570	4,450	8,010	6,330
Wales	20	9,890	3,200	2,590	1,980
UK	1,200	229,040	74,010	57,410	35,800

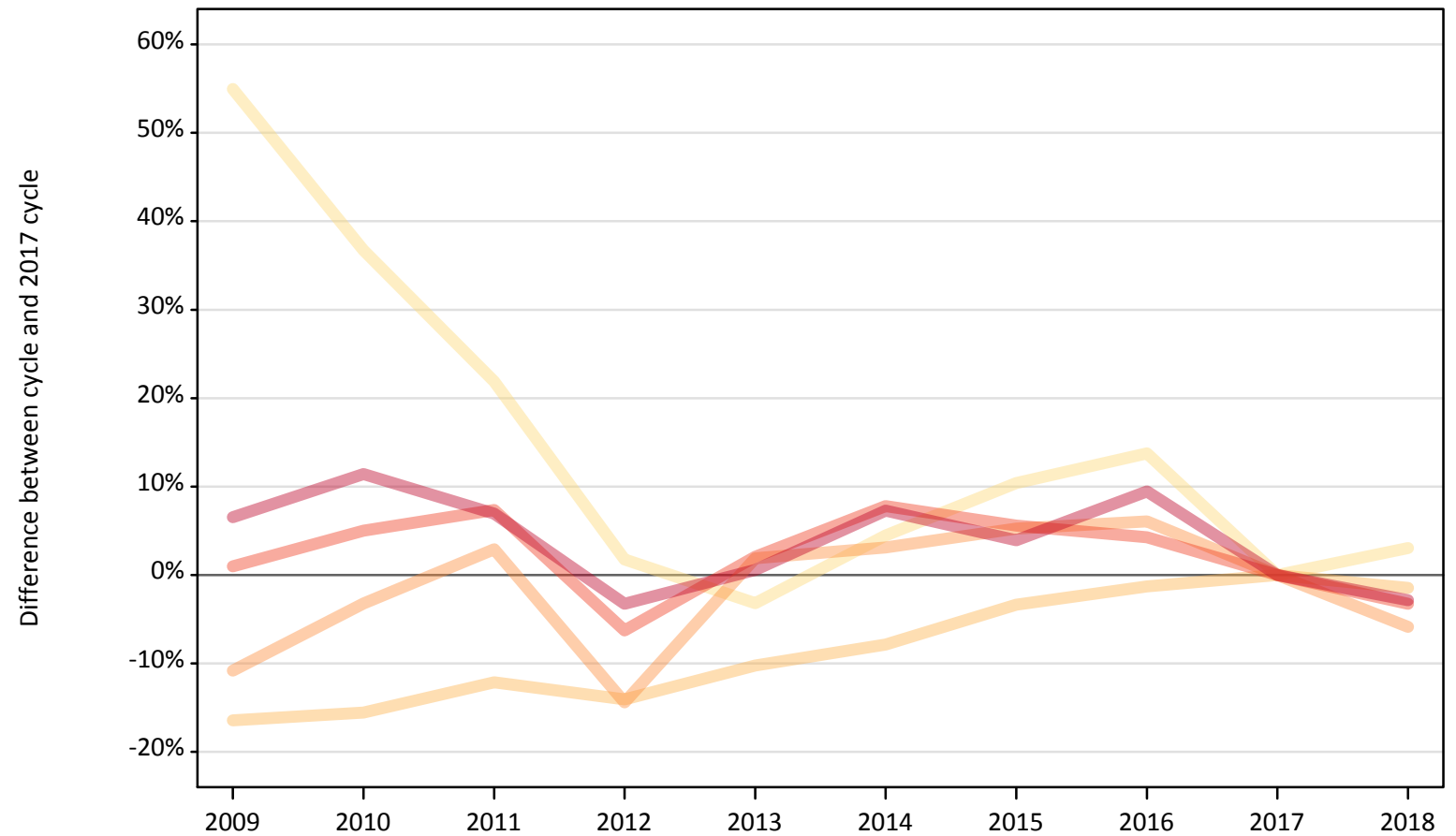
### C.2 Proportion of 18 year old population placed by country of domicile, 2018 cycle (5 days after A level results day)

Domicile of applicant	Age group	2018
England	18	32.4%
Northern Ireland	18	31.7%
Scotland	18	26.2%
Wales	18	28.8%

### C.3 Placed applicants from England by age group at 5 days after A level results day

Selected age groups: difference between cycle and 2017 cycle

- 17 and under
- 18
- 19
- 20 to 24
- 25 and over



Note: The percentage change is not plotted in the above chart for groups with fewer than 30 placed applicants in any one cycle.

#### C.4 Placed applicants from England by age group at 5 days after A level results day

All age groups

Domicile of applicant	Age group	2009	2010	2011	2012	2013	2014	2015	2016	2017	2018
England	17 and under	970	860	760	640	610	650	690	710	630	650
	18	167,280	169,070	175,880	172,000	179,720	184,470	193,430	197,580	200,190	197,240
	19	60,920	66,100	70,280	58,450	69,590	70,420	71,890	72,430	68,300	64,290
	20 to 24	46,620	48,480	49,560	43,280	47,120	49,770	48,750	48,140	46,170	44,670
	25 and over	29,350	30,700	29,460	26,650	27,710	29,550	28,630	30,150	27,550	26,770

#### C.5 Placed applicants from England by age group at 5 days after A level results day

Selected age groups: difference between cycle and 2017 cycle

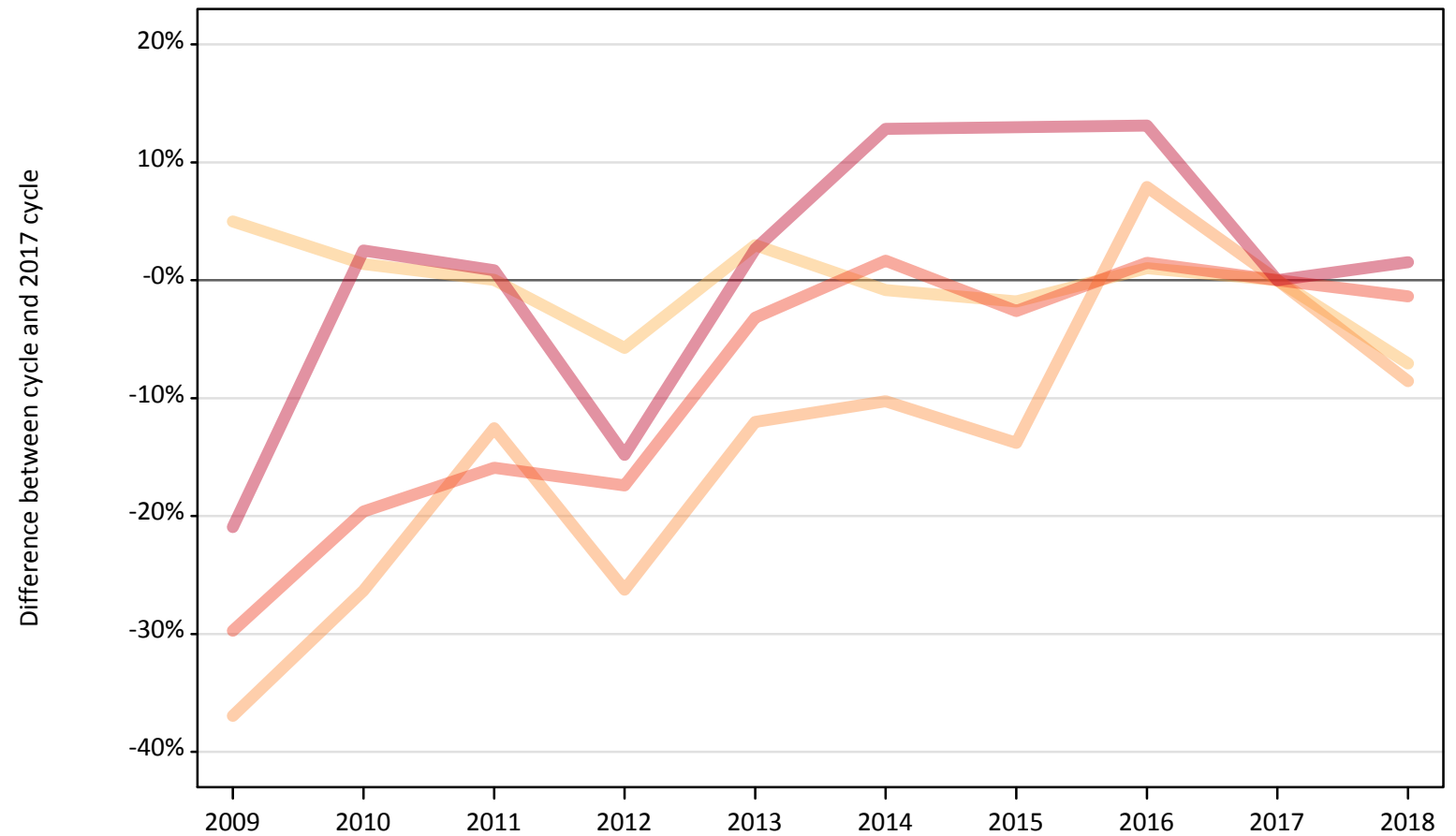
Domicile of applicant	Age group	2009	2010	2011	2012	2013	2014	2015	2016	2017	2018
England	17 and under	55%	37%	22%	2%	-3%	4%	10%	14%	0%	3%
	18	-16%	-16%	-12%	-14%	-10%	-8%	-3%	-1%	0%	-1%
	19	-11%	-3%	3%	-14%	2%	3%	5%	6%	0%	-6%
	20 to 24	1%	5%	7%	-6%	2%	8%	6%	4%	0%	-3%
	25 and over	7%	11%	7%	-3%	1%	7%	4%	9%	0%	-3%

Note: The percentage change is not recorded in the above table for groups with fewer than 10 placed applicants in that cycle or in the 2017 cycle.

## C.6 Placed applicants from Northern Ireland by age group at 5 days after A level results day

Selected age groups: difference between cycle and 2017 cycle

- 17 and under
- 18
- 19
- 20 to 24
- 25 and over



Note: The percentage change is not plotted in the above chart for groups with fewer than 30 placed applicants in any one cycle.

### C.7 Placed applicants from Northern Ireland by age group at 5 days after A level results day

All age groups

Domicile of applicant	Age group	2009	2010	2011	2012	2013	2014	2015	2016	2017	2018
Northern Ireland	17 and under	40	30	40	40	20	20	20	30	20	20
	18	8,300	8,020	7,910	7,460	8,140	7,840	7,770	7,990	7,910	7,350
	19	1,430	1,670	1,980	1,670	1,990	2,030	1,950	2,440	2,260	2,070
	20 to 24	1,530	1,750	1,830	1,800	2,110	2,210	2,120	2,210	2,180	2,150
	25 and over	570	730	720	610	740	810	810	810	720	730

### C.8 Placed applicants from Northern Ireland by age group at 5 days after A level results day

Selected age groups: difference between cycle and 2017 cycle

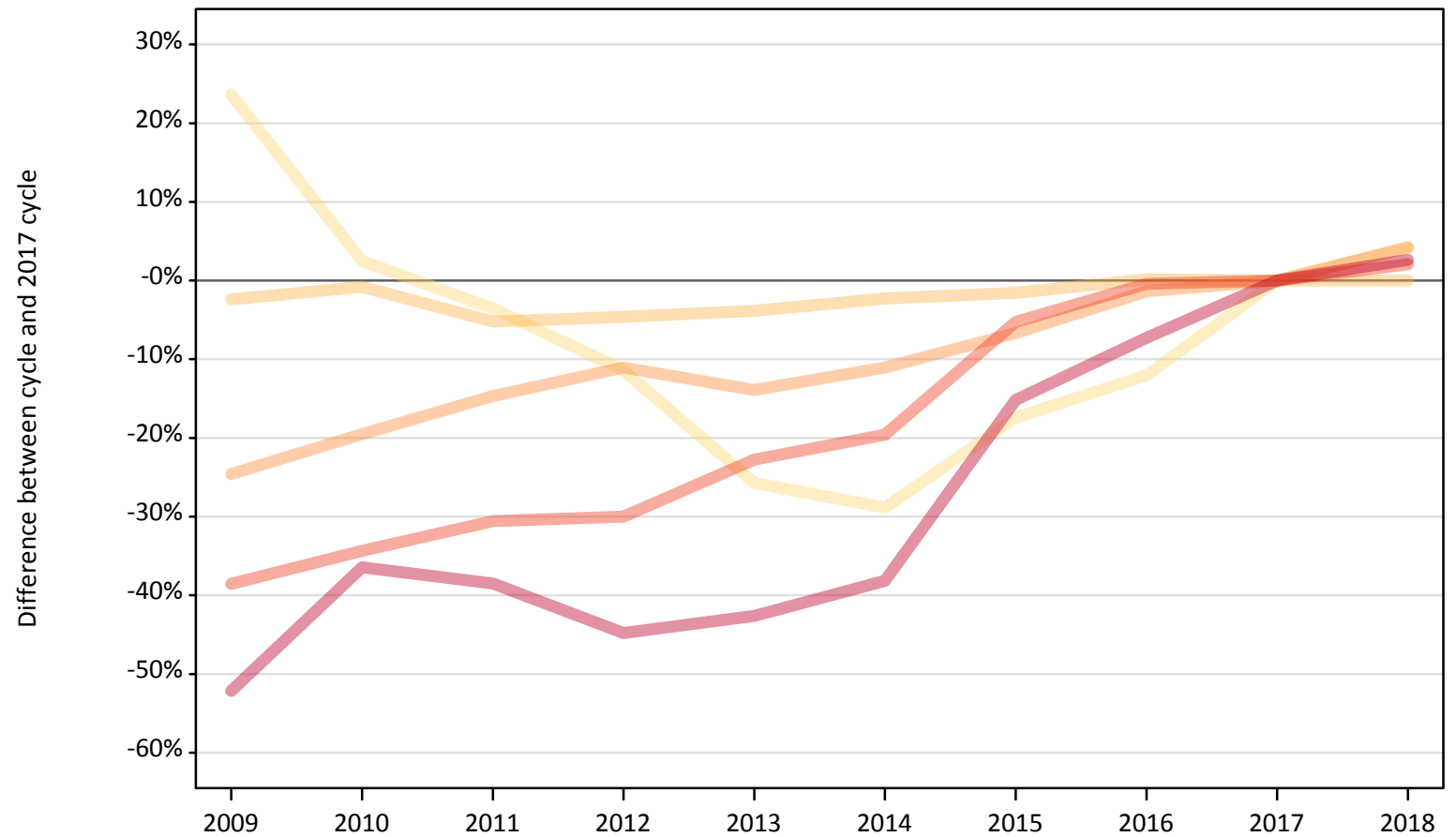
Domicile of applicant	Age group	2009	2010	2011	2012	2013	2014	2015	2016	2017	2018
Northern Ireland	17 and under	169%	106%	138%	163%	25%	6%	13%	94%	0%	50%
	18	5%	1%	0%	-6%	3%	-1%	-2%	1%	0%	-7%
	19	-37%	-26%	-13%	-26%	-12%	-10%	-14%	8%	0%	-9%
	20 to 24	-30%	-20%	-16%	-17%	-3%	2%	-3%	1%	0%	-1%
	25 and over	-21%	3%	1%	-15%	3%	13%	13%	13%	0%	2%

Note: The percentage change is not recorded in the above table for groups with fewer than 10 placed applicants in that cycle or in the 2017 cycle.

### C.9 Placed applicants from Scotland by age group at 5 days after A level results day

Selected age groups: difference between cycle and 2017 cycle

- 17 and under
- 18
- 19
- 20 to 24
- 25 and over



Note: The percentage change is not plotted in the above chart for groups with fewer than 30 placed applicants in any one cycle.

### C.10 Placed applicants from Scotland by age group at 5 days after A level results day

All age groups

Domicile of applicant	Age group	2009	2010	2011	2012	2013	2014	2015	2016	2017	2018
Scotland	17 and under	600	490	470	430	360	340	400	420	480	500
	18	14,210	14,450	13,800	13,890	14,010	14,230	14,340	14,590	14,560	14,570
	19	3,220	3,440	3,650	3,800	3,680	3,800	3,990	4,210	4,270	4,450
	20 to 24	4,820	5,150	5,450	5,490	6,060	6,310	7,440	7,820	7,850	8,010
	25 and over	2,950	3,920	3,790	3,400	3,540	3,810	5,230	5,720	6,170	6,330

### C.11 Placed applicants from Scotland by age group at 5 days after A level results day

Selected age groups: difference between cycle and 2017 cycle

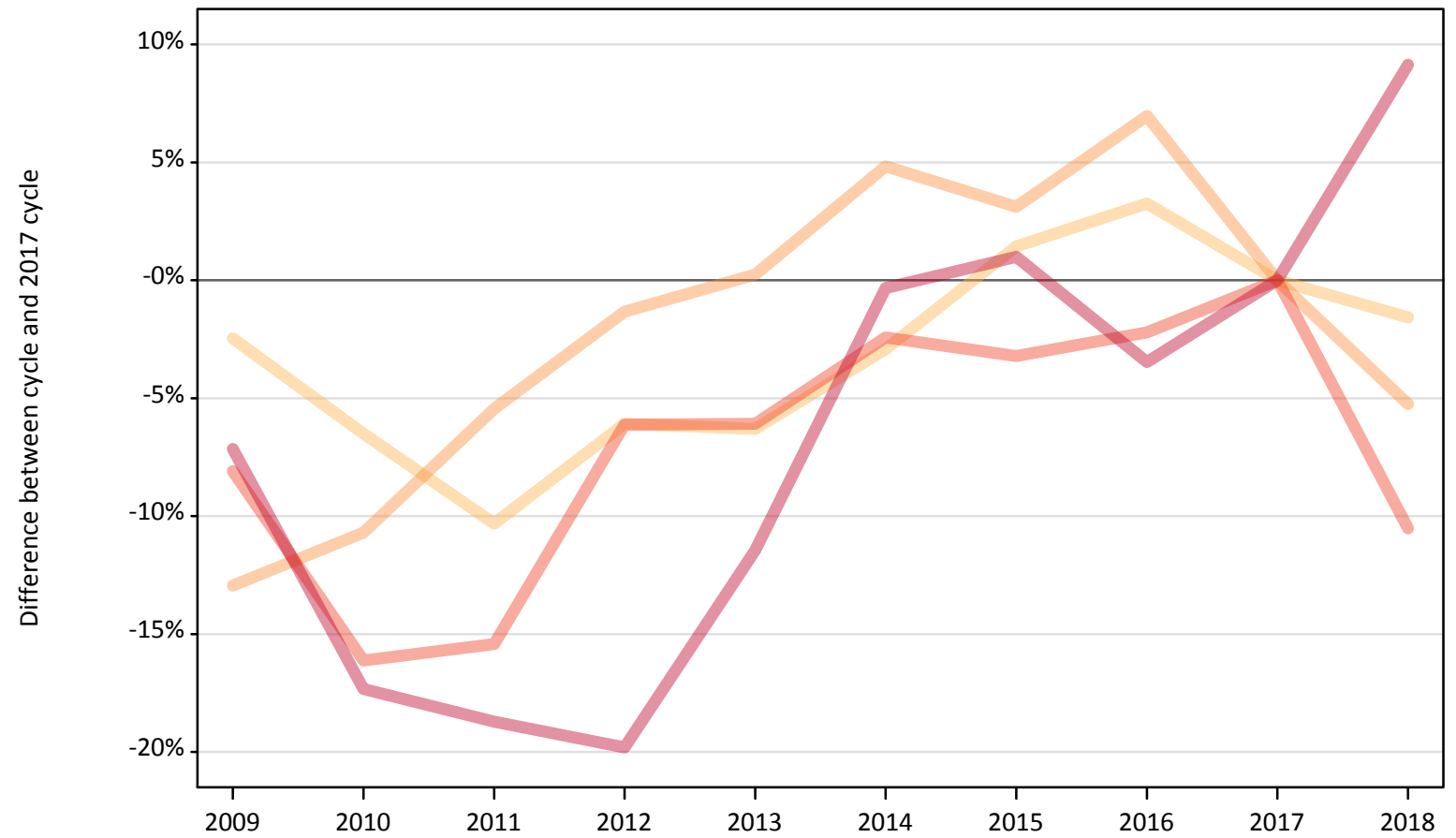
Domicile of applicant	Age group	2009	2010	2011	2012	2013	2014	2015	2016	2017	2018
Scotland	17 and under	24%	2%	-4%	-11%	-26%	-29%	-17%	-12%	0%	4%
	18	-2%	-1%	-5%	-5%	-4%	-2%	-2%	0%	0%	0%
	19	-25%	-20%	-15%	-11%	-14%	-11%	-7%	-1%	0%	4%
	20 to 24	-39%	-34%	-31%	-30%	-23%	-20%	-5%	-0%	0%	2%
	25 and over	-52%	-36%	-39%	-45%	-43%	-38%	-15%	-7%	0%	3%

Note: The percentage change is not recorded in the above table for groups with fewer than 10 placed applicants in that cycle or in the 2017 cycle.

### C.12 Placed applicants from Wales by age group at 5 days after A level results day

Selected age groups: difference between cycle and 2017 cycle

- 17 and under
- 18
- 19
- 20 to 24
- 25 and over



Note: The percentage change is not plotted in the above chart for groups with fewer than 30 placed applicants in any one cycle.



### C.13 Placed applicants from Wales by age group at 5 days after A level results day

All age groups

Domicile of applicant	Age group	2009	2010	2011	2012	2013	2014	2015	2016	2017	2018
Wales	17 and under	40	30	30	20	30	20	20	20	20	20
	18	9,800	9,400	9,010	9,440	9,420	9,760	10,200	10,380	10,050	9,890
	19	2,940	3,010	3,190	3,330	3,380	3,540	3,480	3,610	3,380	3,200
	20 to 24	2,660	2,430	2,450	2,710	2,720	2,820	2,800	2,830	2,890	2,590
	25 and over	1,690	1,500	1,480	1,460	1,610	1,810	1,840	1,750	1,820	1,980

### C.14 Placed applicants from Wales by age group at 5 days after A level results day

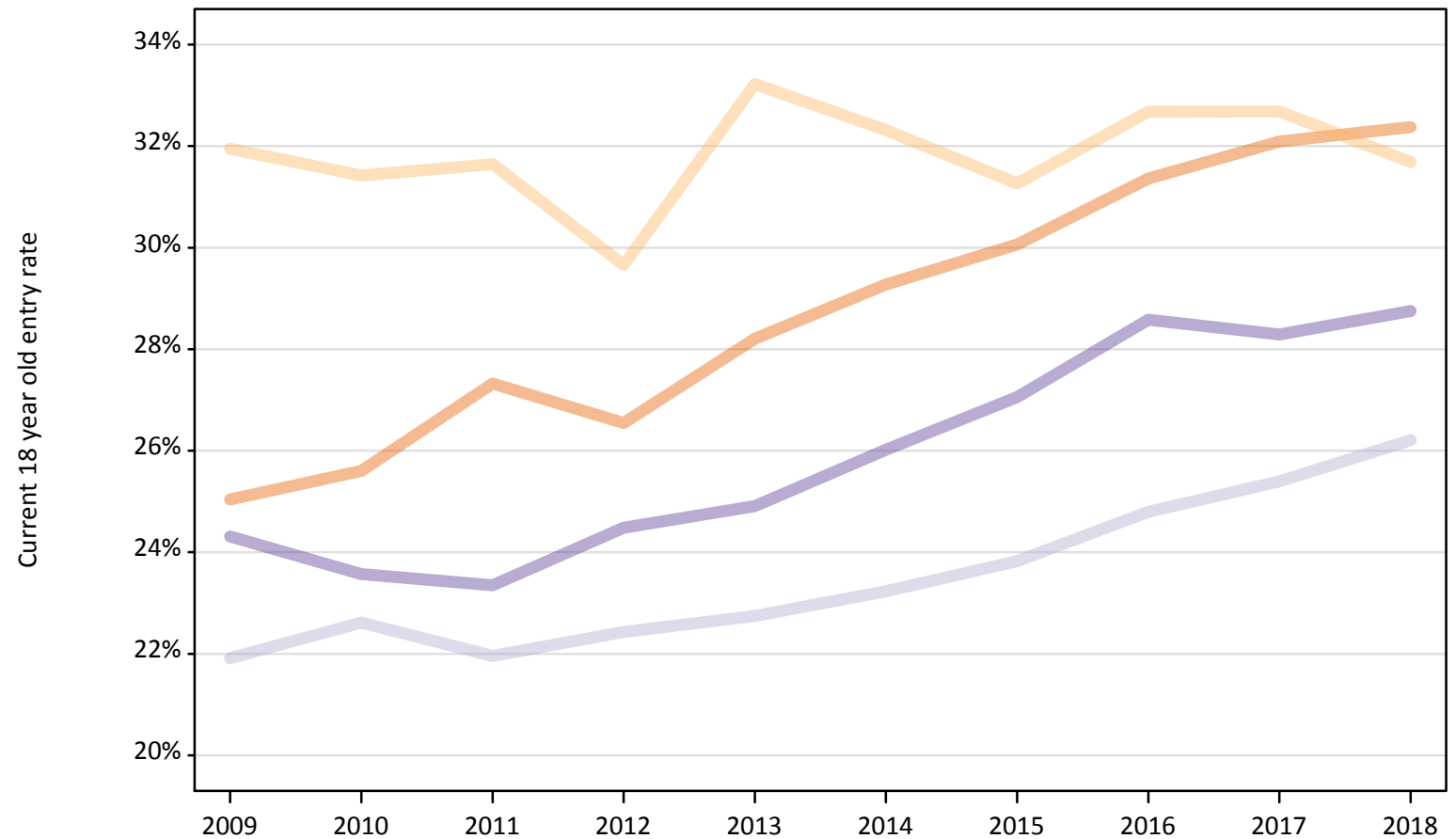
Selected age groups: difference between cycle and 2017 cycle

Domicile of applicant	Age group	2009	2010	2011	2012	2013	2014	2015	2016	2017	2018
Wales	17 and under	163%	113%	88%	13%	63%	31%	0%	44%	0%	50%
	18	-2%	-7%	-10%	-6%	-6%	-3%	1%	3%	0%	-2%
	19	-13%	-11%	-5%	-1%	0%	5%	3%	7%	0%	-5%
	20 to 24	-8%	-16%	-15%	-6%	-6%	-2%	-3%	-2%	0%	-11%
	25 and over	-7%	-17%	-19%	-20%	-11%	-0%	1%	-3%	0%	9%

Note: The percentage change is not recorded in the above table for groups with fewer than 10 placed applicants in that cycle or in the 2017 cycle.

### C.15 Entry rates for 18 year olds by UK country of domicile: 5 days after A level results day

Placed 18 year old applicants as a proportion of the 18 year old population



### C.16 Entry rates for 18 year olds by UK country of domicile: 5 days after A level results day

Placed 18 year old applicants as a proportion of the 18 year old population

Domicile of applicant	Age group	2009	2010	2011	2012	2013	2014	2015	2016	2017	2018
England	18	25.0%	25.6%	27.3%	26.5%	28.2%	29.3%	30.1%	31.4%	32.1%	32.4%
Northern Ireland	18	31.9%	31.4%	31.6%	29.7%	33.2%	32.3%	31.3%	32.7%	32.7%	31.7%
Scotland	18	21.9%	22.6%	22.0%	22.4%	22.7%	23.2%	23.8%	24.8%	25.4%	26.2%
Wales	18	24.3%	23.6%	23.4%	24.5%	24.9%	26.0%	27.1%	28.6%	28.3%	28.8%