

Daily Clearing Analysis: Age

Analysis at 00:05 on Friday 24 August 2018 (8 days after A level results day)

C.1 Placed applicants by country of domicile and age group, 2018 cycle (8 days after A level results day)

Domicile of applicant	Age group				
	17 and under	18	19	20 to 24	25 and over
England	670	201,830	66,470	46,690	28,140
Northern Ireland	20	7,890	2,290	2,300	760
Scotland	510	14,600	4,510	8,130	6,460
Wales	30	10,030	3,260	2,690	2,090
UK	1,230	234,350	76,530	59,810	37,450

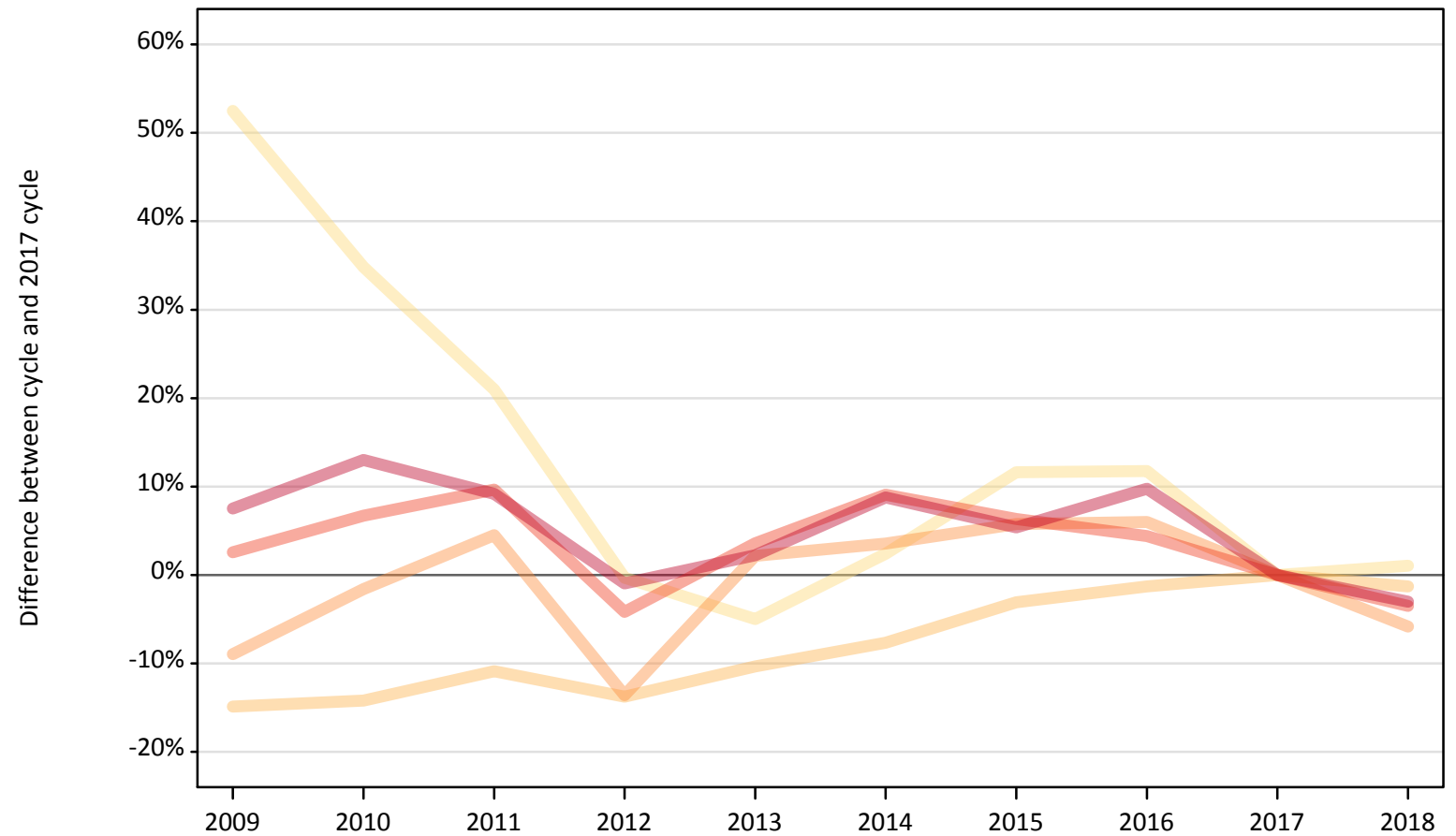
C.2 Proportion of 18 year old population placed by country of domicile, 2018 cycle (8 days after A level results day)

Domicile of applicant	Age group	2018
England	18	33.1%
Northern Ireland	18	34.0%
Scotland	18	26.3%
Wales	18	29.2%

C.3 Placed applicants from England by age group at 8 days after A level results day

Selected age groups: difference between cycle and 2017 cycle

- 17 and under
- 18
- 19
- 20 to 24
- 25 and over



Note: The percentage change is not plotted in the above chart for groups with fewer than 30 placed applicants in any one cycle.

C.4 Placed applicants from England by age group at 8 days after A level results day

All age groups

Domicile of applicant	Age group	2009	2010	2011	2012	2013	2014	2015	2016	2017	2018
England	17 and under	1,010	890	800	660	630	680	740	740	660	670
	18	174,020	175,450	182,240	176,290	183,310	188,830	198,120	201,850	204,470	201,830
	19	64,270	69,480	73,760	61,000	72,120	73,100	74,650	74,830	70,600	66,470
	20 to 24	49,630	51,640	53,070	46,380	50,130	52,780	51,450	50,520	48,390	46,690
	25 and over	31,200	32,780	31,670	28,730	29,660	31,550	30,580	31,840	29,010	28,140

C.5 Placed applicants from England by age group at 8 days after A level results day

Selected age groups: difference between cycle and 2017 cycle

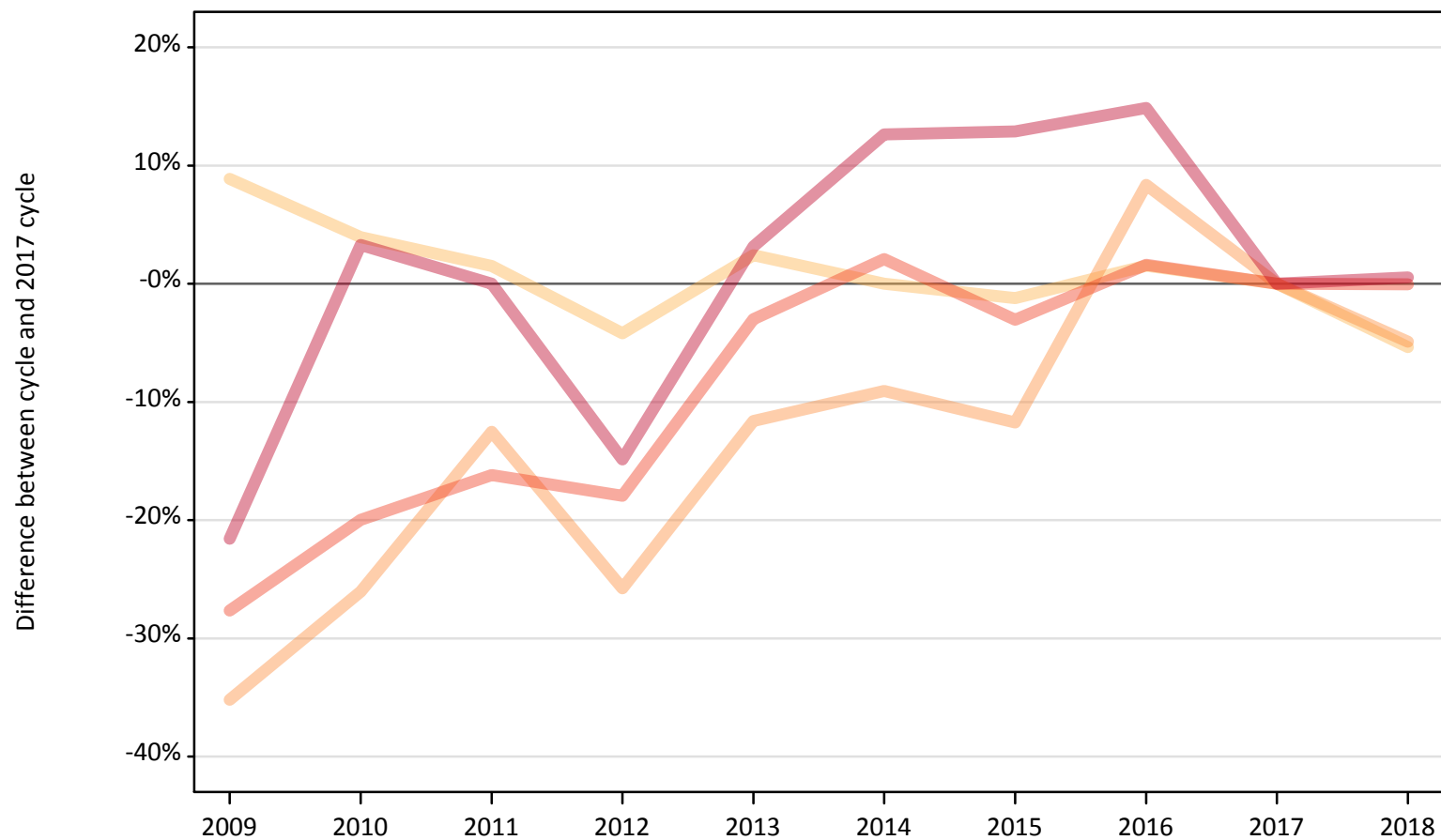
Domicile of applicant	Age group	2009	2010	2011	2012	2013	2014	2015	2016	2017	2018
England	17 and under	52%	35%	21%	-0%	-5%	2%	12%	12%	0%	1%
	18	-15%	-14%	-11%	-14%	-10%	-8%	-3%	-1%	0%	-1%
	19	-9%	-2%	4%	-14%	2%	4%	6%	6%	0%	-6%
	20 to 24	3%	7%	10%	-4%	4%	9%	6%	4%	0%	-4%
	25 and over	8%	13%	9%	-1%	2%	9%	5%	10%	0%	-3%

Note: The percentage change is not recorded in the above table for groups with fewer than 10 placed applicants in that cycle or in the 2017 cycle.

C.6 Placed applicants from Northern Ireland by age group at 8 days after A level results day

Selected age groups: difference between cycle and 2017 cycle

- 17 and under
- 18
- 19
- 20 to 24
- 25 and over



Note: The percentage change is not plotted in the above chart for groups with fewer than 30 placed applicants in any one cycle.

C.7 Placed applicants from Northern Ireland by age group at 8 days after A level results day

All age groups

Domicile of applicant	Age group	2009	2010	2011	2012	2013	2014	2015	2016	2017	2018
Northern Ireland	17 and under	50	40	40	40	20	20	20	30	20	20
	18	9,080	8,670	8,470	7,990	8,540	8,340	8,240	8,470	8,340	7,890
	19	1,560	1,780	2,100	1,780	2,120	2,190	2,120	2,600	2,400	2,290
	20 to 24	1,670	1,840	1,930	1,890	2,230	2,350	2,230	2,340	2,300	2,300
	25 and over	600	790	760	650	780	860	860	870	760	760

C.8 Placed applicants from Northern Ireland by age group at 8 days after A level results day

Selected age groups: difference between cycle and 2017 cycle

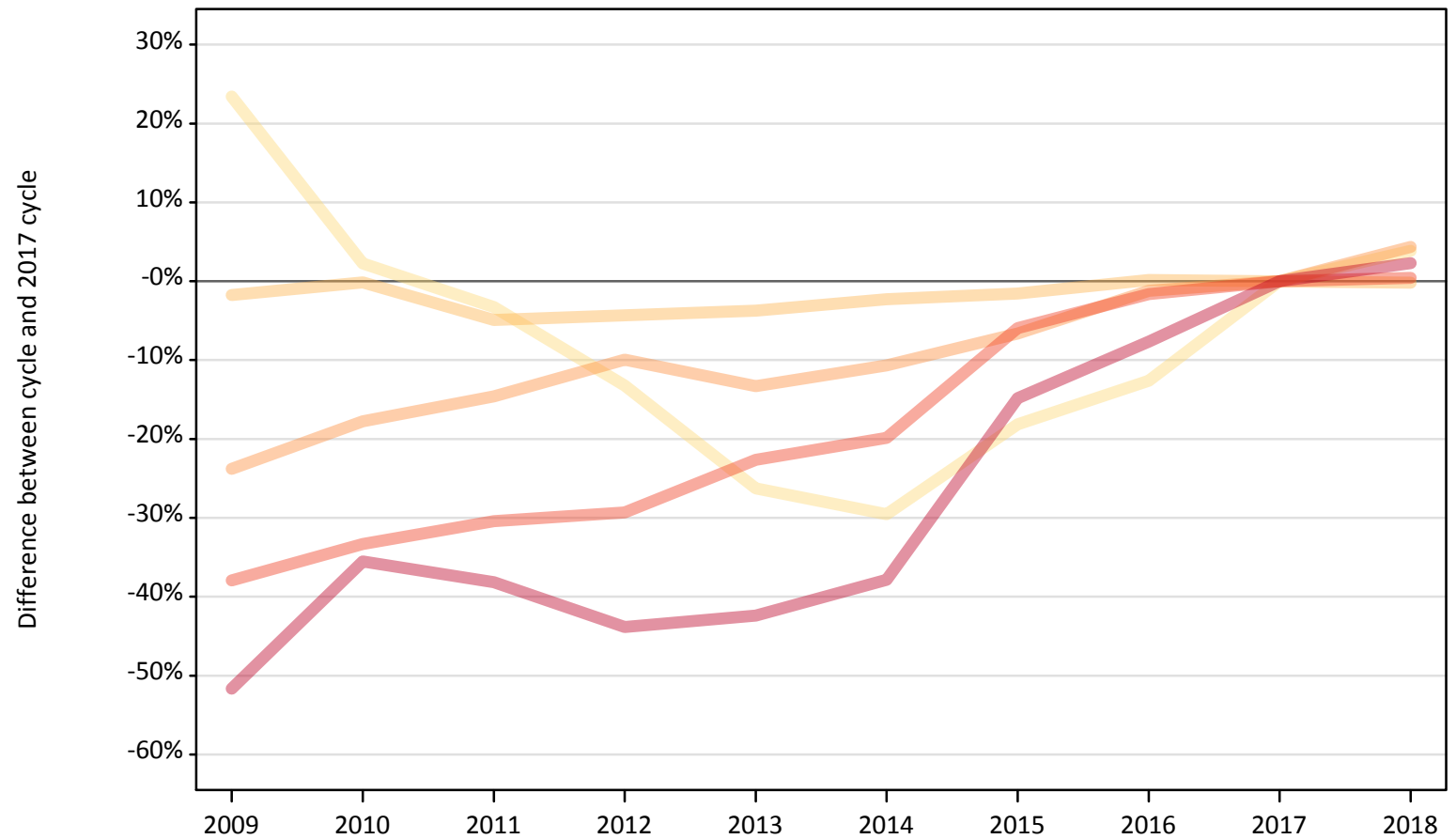
Domicile of applicant	Age group	2009	2010	2011	2012	2013	2014	2015	2016	2017	2018
Northern Ireland	17 and under	176%	124%	129%	147%	18%	12%	6%	82%	0%	41%
	18	9%	4%	1%	-4%	2%	0%	-1%	2%	0%	-5%
	19	-35%	-26%	-13%	-26%	-12%	-9%	-12%	8%	0%	-5%
	20 to 24	-28%	-20%	-16%	-18%	-3%	2%	-3%	2%	0%	-0%
	25 and over	-22%	3%	0%	-15%	3%	13%	13%	15%	0%	1%

Note: The percentage change is not recorded in the above table for groups with fewer than 10 placed applicants in that cycle or in the 2017 cycle.

C.9 Placed applicants from Scotland by age group at 8 days after A level results day

Selected age groups: difference between cycle and 2017 cycle

- 17 and under
- 18
- 19
- 20 to 24
- 25 and over



Note: The percentage change is not plotted in the above chart for groups with fewer than 30 placed applicants in any one cycle.

C.10 Placed applicants from Scotland by age group at 8 days after A level results day

All age groups

Domicile of applicant	Age group	2009	2010	2011	2012	2013	2014	2015	2016	2017	2018
Scotland	17 and under	610	500	480	430	360	350	400	430	490	510
	18	14,370	14,600	13,910	14,000	14,080	14,290	14,400	14,650	14,620	14,600
	19	3,290	3,550	3,690	3,890	3,740	3,860	4,030	4,270	4,320	4,510
	20 to 24	5,020	5,400	5,630	5,720	6,260	6,490	7,610	7,960	8,100	8,130
	25 and over	3,050	4,070	3,910	3,550	3,640	3,930	5,380	5,840	6,320	6,460

C.11 Placed applicants from Scotland by age group at 8 days after A level results day

Selected age groups: difference between cycle and 2017 cycle

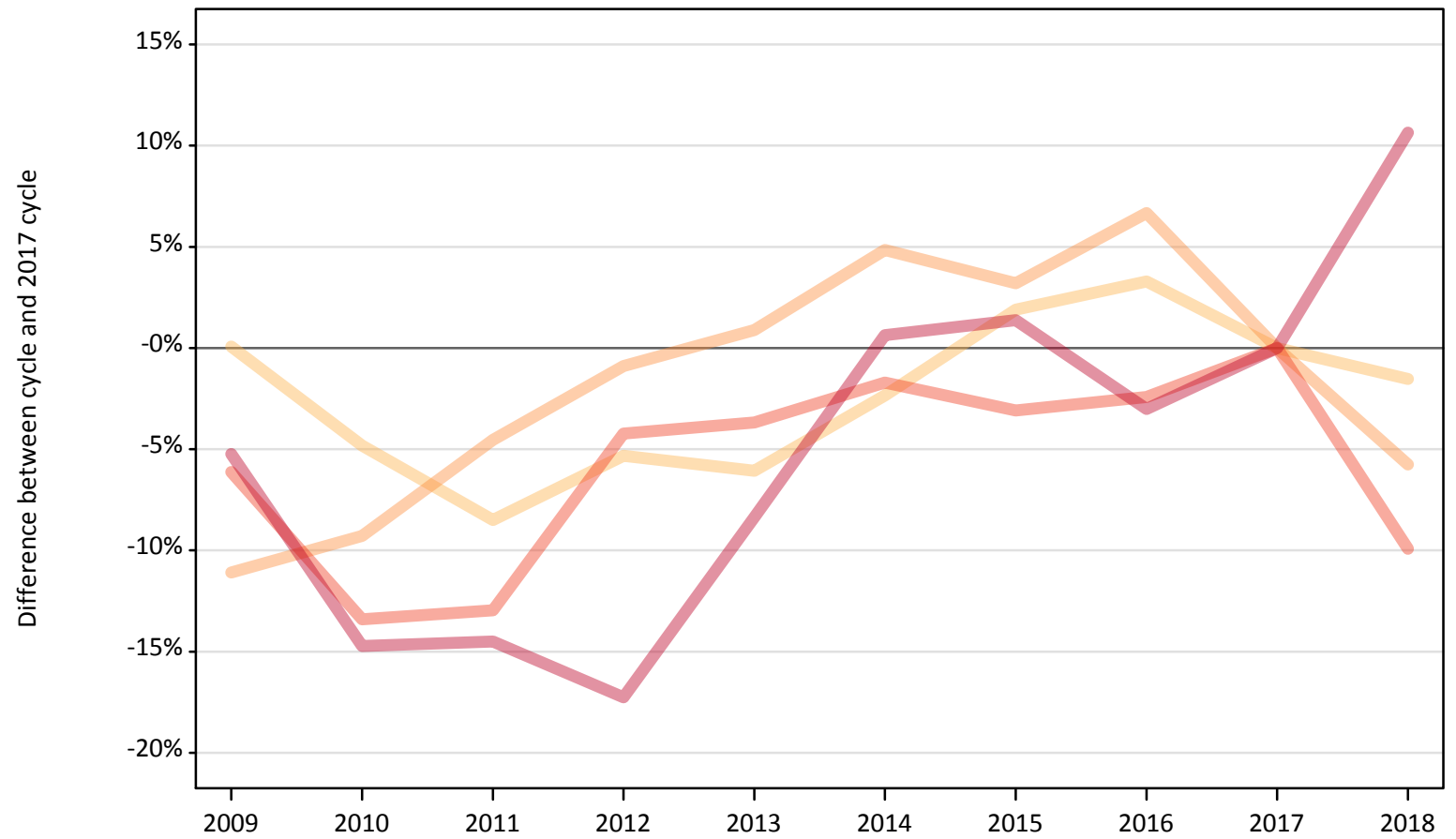
Domicile of applicant	Age group	2009	2010	2011	2012	2013	2014	2015	2016	2017	2018
Scotland	17 and under	23%	2%	-3%	-13%	-26%	-30%	-18%	-13%	0%	4%
	18	-2%	-0%	-5%	-4%	-4%	-2%	-2%	0%	0%	-0%
	19	-24%	-18%	-15%	-10%	-13%	-11%	-7%	-1%	0%	4%
	20 to 24	-38%	-33%	-30%	-29%	-23%	-20%	-6%	-2%	0%	0%
	25 and over	-52%	-36%	-38%	-44%	-42%	-38%	-15%	-8%	0%	2%

Note: The percentage change is not recorded in the above table for groups with fewer than 10 placed applicants in that cycle or in the 2017 cycle.

C.12 Placed applicants from Wales by age group at 8 days after A level results day

Selected age groups: difference between cycle and 2017 cycle

- 17 and under
- 18
- 19
- 20 to 24
- 25 and over



Note: The percentage change is not plotted in the above chart for groups with fewer than 30 placed applicants in any one cycle.

C.13 Placed applicants from Wales by age group at 8 days after A level results day

All age groups

Domicile of applicant	Age group	2009	2010	2011	2012	2013	2014	2015	2016	2017	2018
Wales	17 and under	50	40	30	20	30	20	20	20	20	30
	18	10,200	9,700	9,320	9,650	9,570	9,950	10,380	10,520	10,190	10,030
	19	3,080	3,140	3,300	3,430	3,490	3,630	3,570	3,690	3,460	3,260
	20 to 24	2,800	2,590	2,600	2,860	2,880	2,940	2,890	2,910	2,990	2,690
	25 and over	1,790	1,610	1,620	1,560	1,730	1,900	1,920	1,830	1,890	2,090

C.14 Placed applicants from Wales by age group at 8 days after A level results day

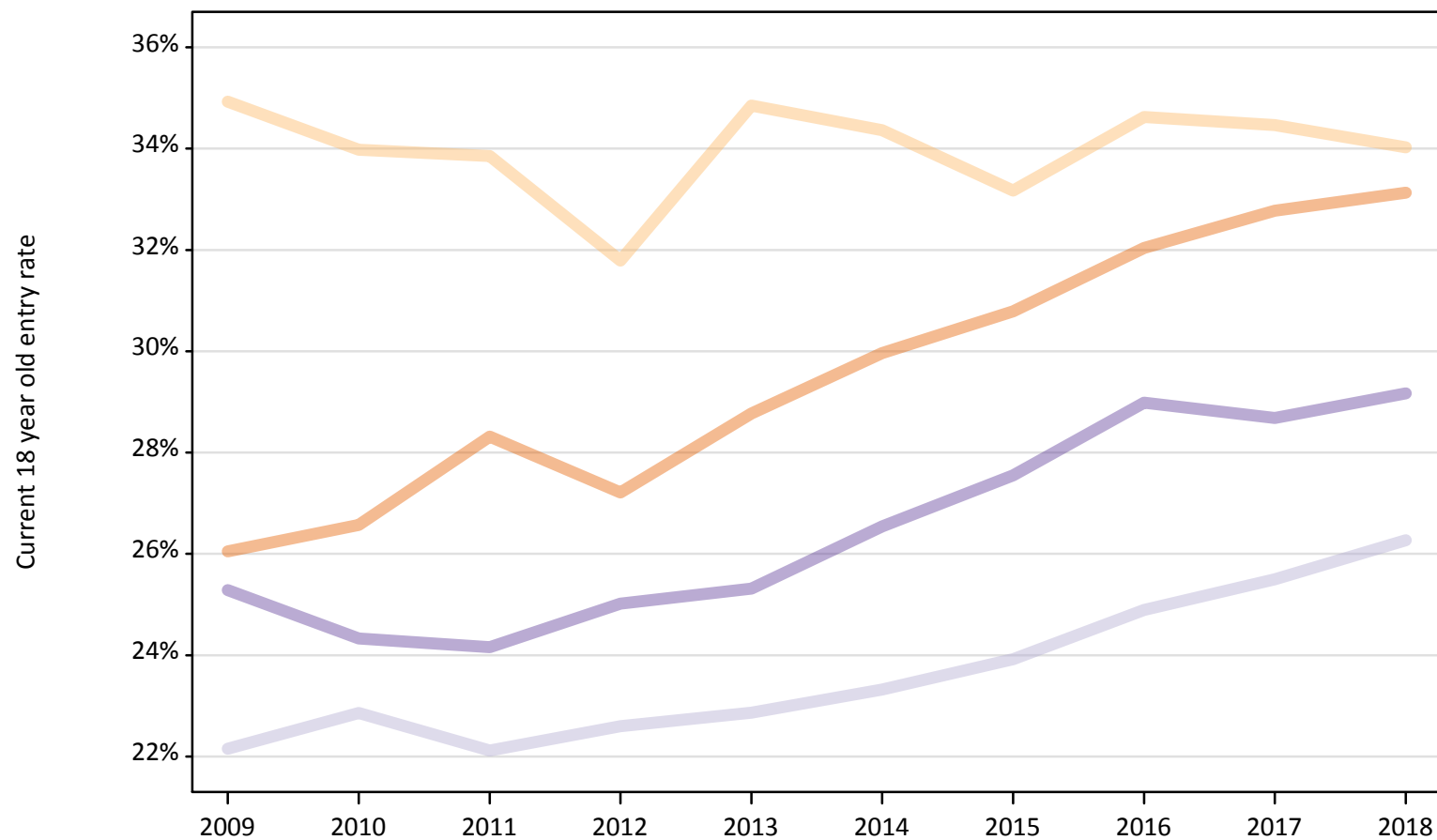
Selected age groups: difference between cycle and 2017 cycle

Domicile of applicant	Age group	2009	2010	2011	2012	2013	2014	2015	2016	2017	2018
Wales	17 and under	181%	119%	100%	31%	81%	31%	13%	50%	0%	56%
	18	0%	-5%	-8%	-5%	-6%	-2%	2%	3%	0%	-2%
	19	-11%	-9%	-5%	-1%	1%	5%	3%	7%	0%	-6%
	20 to 24	-6%	-13%	-13%	-4%	-4%	-2%	-3%	-2%	0%	-10%
	25 and over	-5%	-15%	-15%	-17%	-8%	1%	1%	-3%	0%	11%

Note: The percentage change is not recorded in the above table for groups with fewer than 10 placed applicants in that cycle or in the 2017 cycle.

C.15 Entry rates for 18 year olds by UK country of domicile: 8 days after A level results day

Placed 18 year old applicants as a proportion of the 18 year old population



C.16 Entry rates for 18 year olds by UK country of domicile: 8 days after A level results day

Placed 18 year old applicants as a proportion of the 18 year old population

Domicile of applicant	Age group	2009	2010	2011	2012	2013	2014	2015	2016	2017	2018
England	18	26.0%	26.6%	28.3%	27.2%	28.8%	30.0%	30.8%	32.0%	32.8%	33.1%
Northern Ireland	18	34.9%	34.0%	33.9%	31.8%	34.8%	34.4%	33.2%	34.6%	34.5%	34.0%
Scotland	18	22.2%	22.9%	22.1%	22.6%	22.9%	23.3%	23.9%	24.9%	25.5%	26.3%
Wales	18	25.3%	24.3%	24.2%	25.0%	25.3%	26.5%	27.6%	29.0%	28.7%	29.2%