

Daily Clearing Analysis: Age

B7 Nursing analysis at 00:05 on Friday 17 August 2018 (1 day after A level results day)

CB.1 Placed applicants to nursing by country of domicile and age group, 2018 cycle (1 day after A level results day)

Domicile of applicant	Age group				
	17 and under	18	19	20 to 24	25 and over
England	0	3,930	1,910	3,700	6,380
Northern Ireland	0	320	160	240	220
Scotland	10	530	290	730	1,330
Wales	0	310	160	350	570
UK	20	5,090	2,530	5,010	8,490

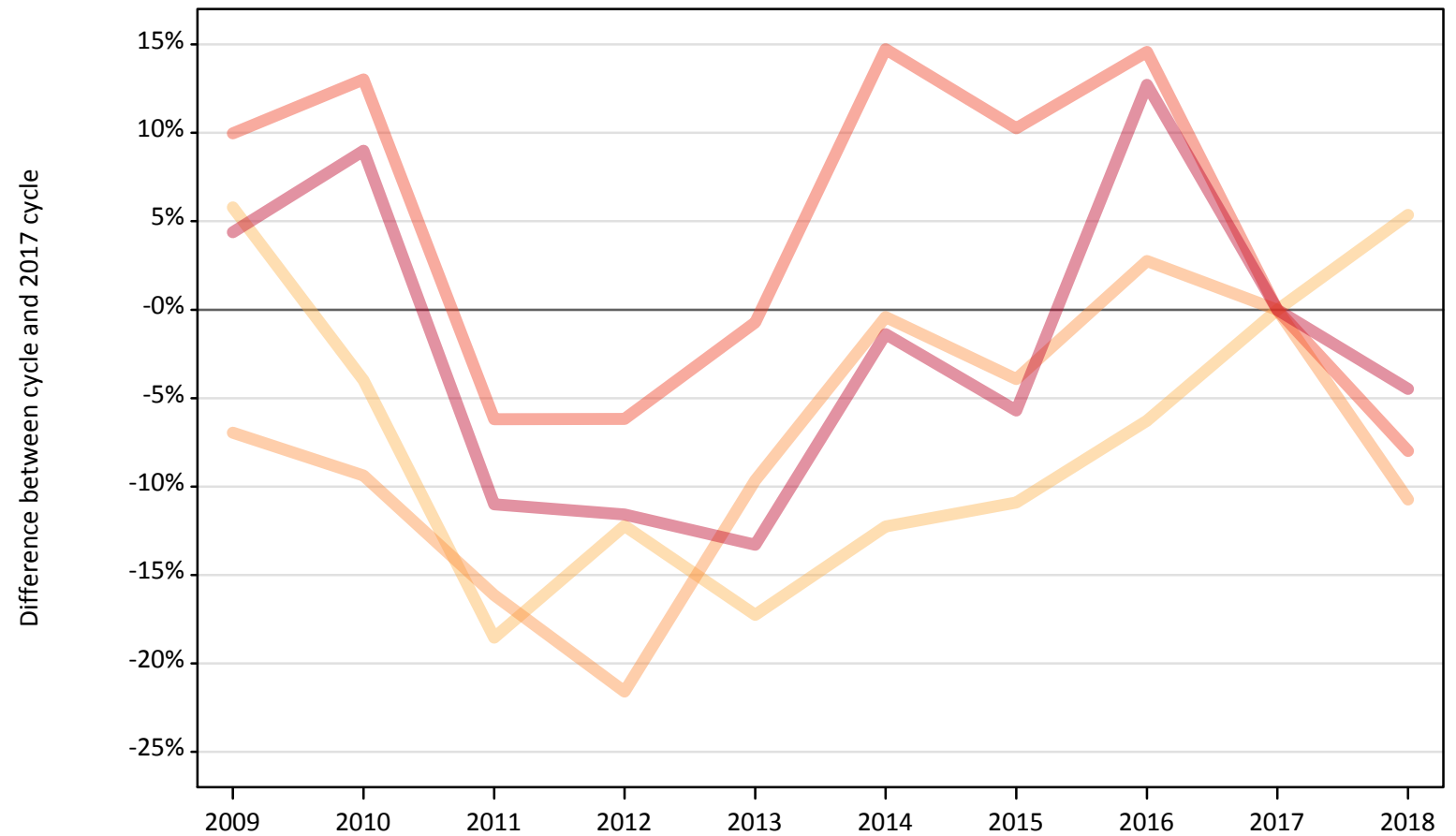
CB.2 Proportion of 18 year old population placed to nursing by country of domicile, 2018 cycle (1 day after A level results day)

Domicile of applicant	Age group	2018
England	18	0.6%
Northern Ireland	18	1.4%
Scotland	18	1.0%
Wales	18	0.9%

CB.3 Placed applicants to nursing from England by age group at 1 day after A level results day

Selected age groups: difference between cycle and 2017 cycle

- 17 and under
- 18
- 19
- 20 to 24
- 25 and over



Note: The percentage change is not plotted in the above chart for groups with fewer than 30 placed applicants in any one cycle.

CB.4 Placed applicants to nursing from England by age group at 1 day after A level results day

All age groups

Domicile of applicant	Age group	2009	2010	2011	2012	2013	2014	2015	2016	2017	2018
England	17 and under	140	70	20	0	0	10	0	0	10	0
	18	3,950	3,580	3,040	3,270	3,090	3,270	3,320	3,500	3,730	3,930
	19	2,000	1,940	1,800	1,680	1,940	2,140	2,060	2,200	2,140	1,910
	20 to 24	4,420	4,540	3,770	3,770	3,990	4,610	4,430	4,610	4,020	3,700
	25 and over	6,970	7,280	5,940	5,900	5,790	6,590	6,300	7,530	6,680	6,380

CB.5 Placed applicants to nursing from England by age group at 1 day after A level results day

Selected age groups: difference between cycle and 2017 cycle

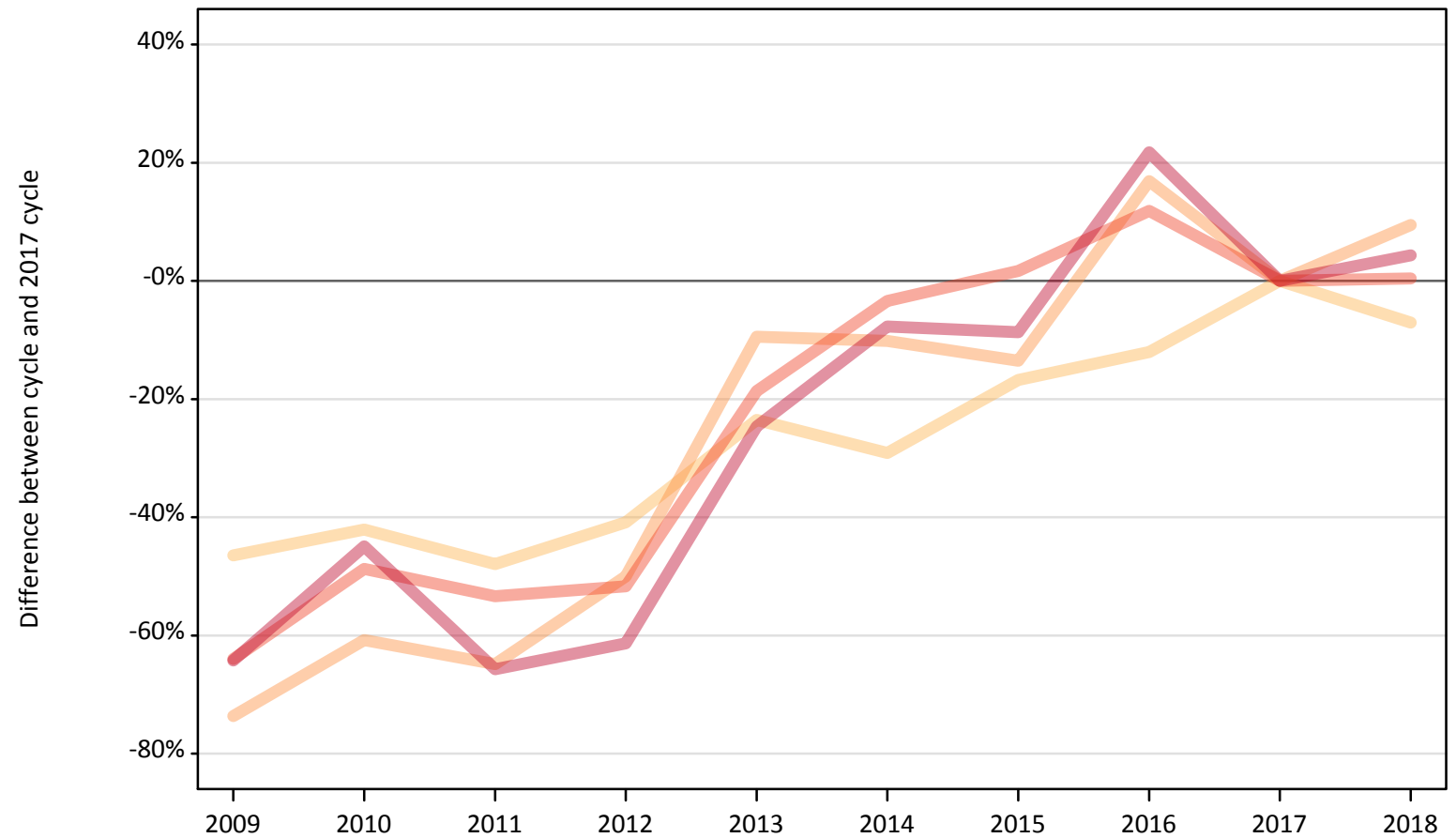
Domicile of applicant	Age group	2009	2010	2011	2012	2013	2014	2015	2016	2017	2018
England	17 and under	2267%	1083%	300%			0%			0%	
	18	6%	-4%	-19%	-12%	-17%	-12%	-11%	-6%	0%	5%
	19	-7%	-9%	-16%	-22%	-10%	-0%	-4%	3%	0%	-11%
	20 to 24	10%	13%	-6%	-6%	-1%	15%	10%	15%	0%	-8%
	25 and over	4%	9%	-11%	-12%	-13%	-1%	-6%	13%	0%	-4%

Note: The percentage change is not recorded in the above table for groups with fewer than 10 placed applicants in that cycle or in the 2017 cycle.

CB.6 Placed applicants to nursing from Northern Ireland by age group at 1 day after A level results day

Selected age groups: difference between cycle and 2017 cycle

- 17 and under
- 18
- 19
- 20 to 24
- 25 and over



Note: The percentage change is not plotted in the above chart for groups with fewer than 30 placed applicants in any one cycle.

CB.7 Placed applicants to nursing from Northern Ireland by age group at 1 day after A level results day

All age groups

Domicile of applicant	Age group	2009	2010	2011	2012	2013	2014	2015	2016	2017	2018
Northern Ireland	17 and under	0	0	0	0	0	0	0	0	0	0
	18	180	200	180	200	260	240	280	300	340	320
	19	40	60	50	70	130	130	130	170	150	160
	20 to 24	90	120	110	110	190	230	240	260	240	240
	25 and over	70	110	70	80	160	190	190	250	210	220

CB.8 Placed applicants to nursing from Northern Ireland by age group at 1 day after A level results day

Selected age groups: difference between cycle and 2017 cycle

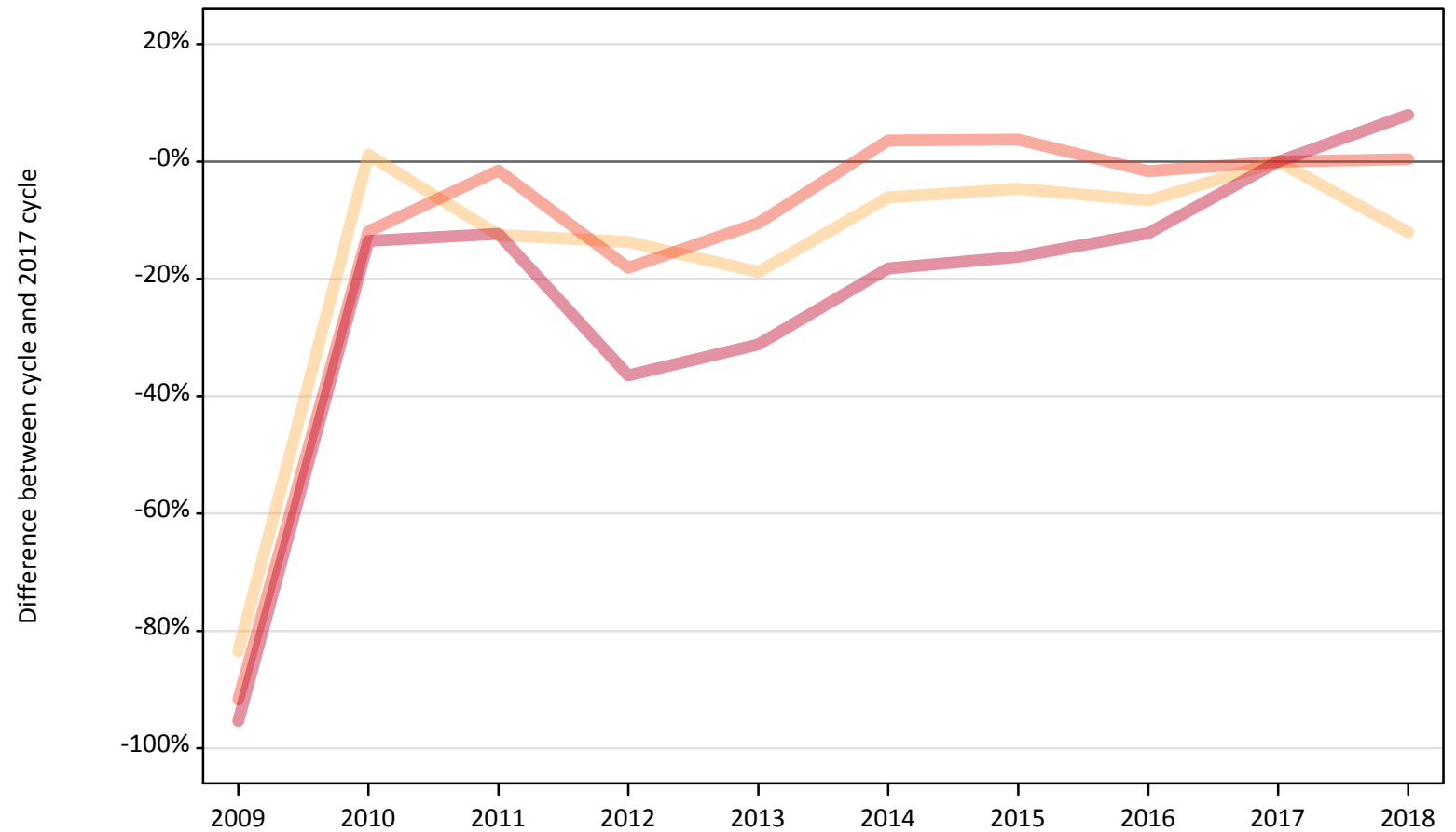
Domicile of applicant	Age group	2009	2010	2011	2012	2013	2014	2015	2016	2017	2018
Northern Ireland	17 and under										
	18	-46%	-42%	-48%	-41%	-24%	-29%	-17%	-12%	0%	-7%
	19	-74%	-61%	-65%	-50%	-9%	-10%	-14%	17%	0%	9%
	20 to 24	-64%	-49%	-53%	-52%	-19%	-3%	2%	12%	0%	0%
	25 and over	-64%	-45%	-66%	-61%	-25%	-8%	-9%	22%	0%	4%

Note: The percentage change is not recorded in the above table for groups with fewer than 10 placed applicants in that cycle or in the 2017 cycle.

CB.9 Placed applicants to nursing from Scotland by age group at 1 day after A level results day

Selected age groups: difference between cycle and 2017 cycle

- 17 and under
- 18
- 19
- 20 to 24
- 25 and over



Note: The percentage change is not plotted in the above chart for groups with fewer than 30 placed applicants in any one cycle.

CB.10 Placed applicants to nursing from Scotland by age group at 1 day after A level results day

All age groups

Domicile of applicant	Age group	2009	2010	2011	2012	2013	2014	2015	2016	2017	2018
Scotland	17 and under	0	40	20	20	20	20	10	20	20	10
	18	100	610	530	520	490	570	580	570	610	530
	19	30	280	270	270	280	310	300	310	280	290
	20 to 24	60	640	710	590	650	750	750	710	720	730
	25 and over	60	1,070	1,080	780	850	1,010	1,030	1,080	1,230	1,330

CB.11 Placed applicants to nursing from Scotland by age group at 1 day after A level results day

Selected age groups: difference between cycle and 2017 cycle

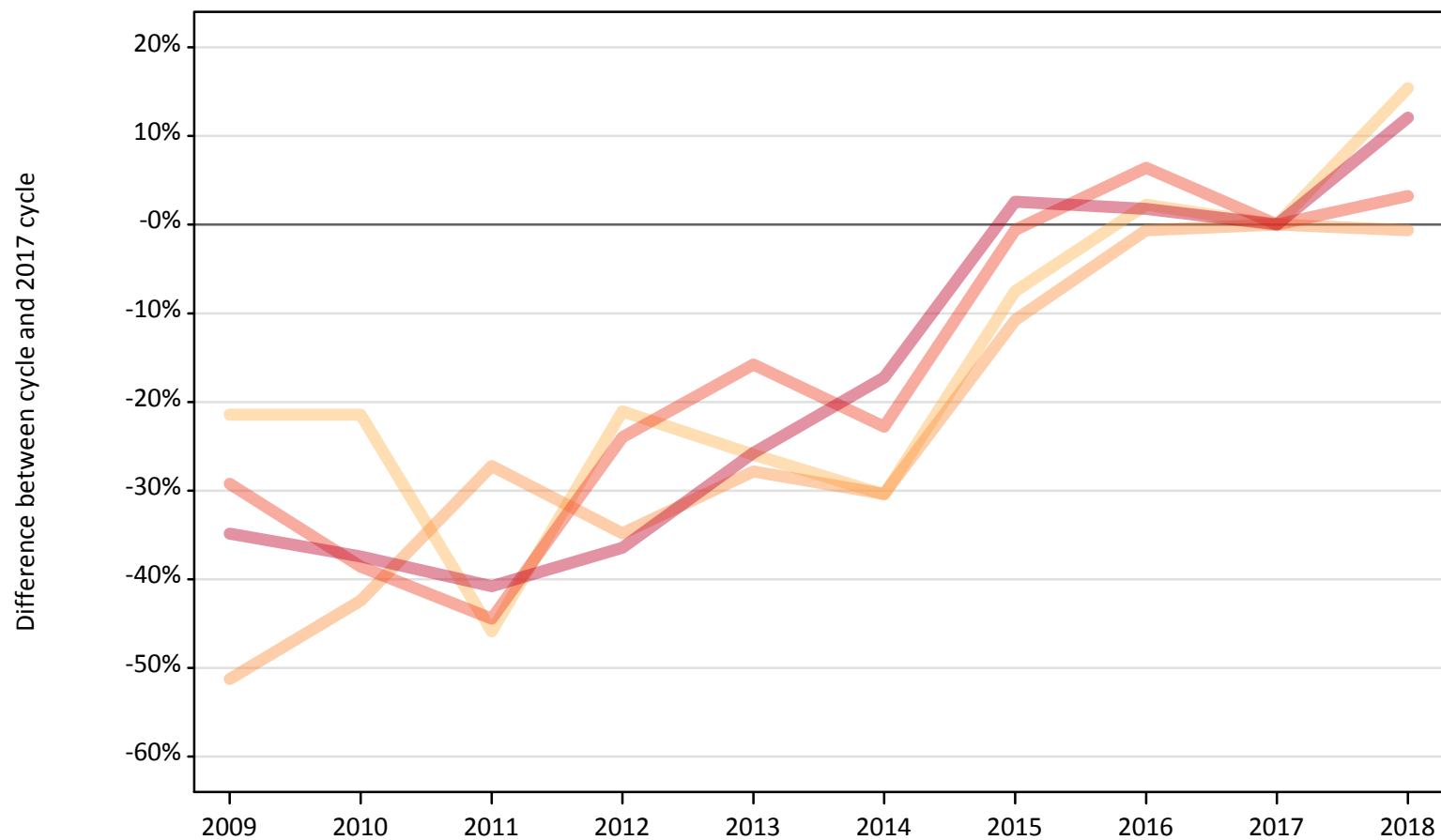
Domicile of applicant	Age group	2009	2010	2011	2012	2013	2014	2015	2016	2017	2018
Scotland	17 and under		95%	21%	5%	0%	-11%	-37%	-16%	0%	-26%
	18	-83%	1%	-13%	-14%	-19%	-6%	-5%	-7%	0%	-12%
	19	-91%	0%	-2%	-4%	1%	11%	6%	12%	0%	6%
	20 to 24	-92%	-12%	-2%	-18%	-11%	4%	4%	-2%	0%	0%
	25 and over	-95%	-14%	-12%	-36%	-31%	-18%	-16%	-12%	0%	8%

Note: The percentage change is not recorded in the above table for groups with fewer than 10 placed applicants in that cycle or in the 2017 cycle.

CB.12 Placed applicants to nursing from Wales by age group at 1 day after A level results day

Selected age groups: difference between cycle and 2017 cycle

- 17 and under
- 18
- 19
- 20 to 24
- 25 and over



Note: The percentage change is not plotted in the above chart for groups with fewer than 30 placed applicants in any one cycle.

CB.13 Placed applicants to nursing from Wales by age group at 1 day after A level results day

All age groups

Domicile of applicant	Age group	2009	2010	2011	2012	2013	2014	2015	2016	2017	2018
Wales	17 and under	0	0	0	0	0	0	0	0	0	0
	18	210	210	140	210	200	190	250	270	270	310
	19	80	90	120	100	110	110	140	160	160	160
	20 to 24	240	210	190	260	290	260	340	360	340	350
	25 and over	330	320	300	320	380	420	520	510	510	570

CB.14 Placed applicants to nursing from Wales by age group at 1 day after A level results day

Selected age groups: difference between cycle and 2017 cycle

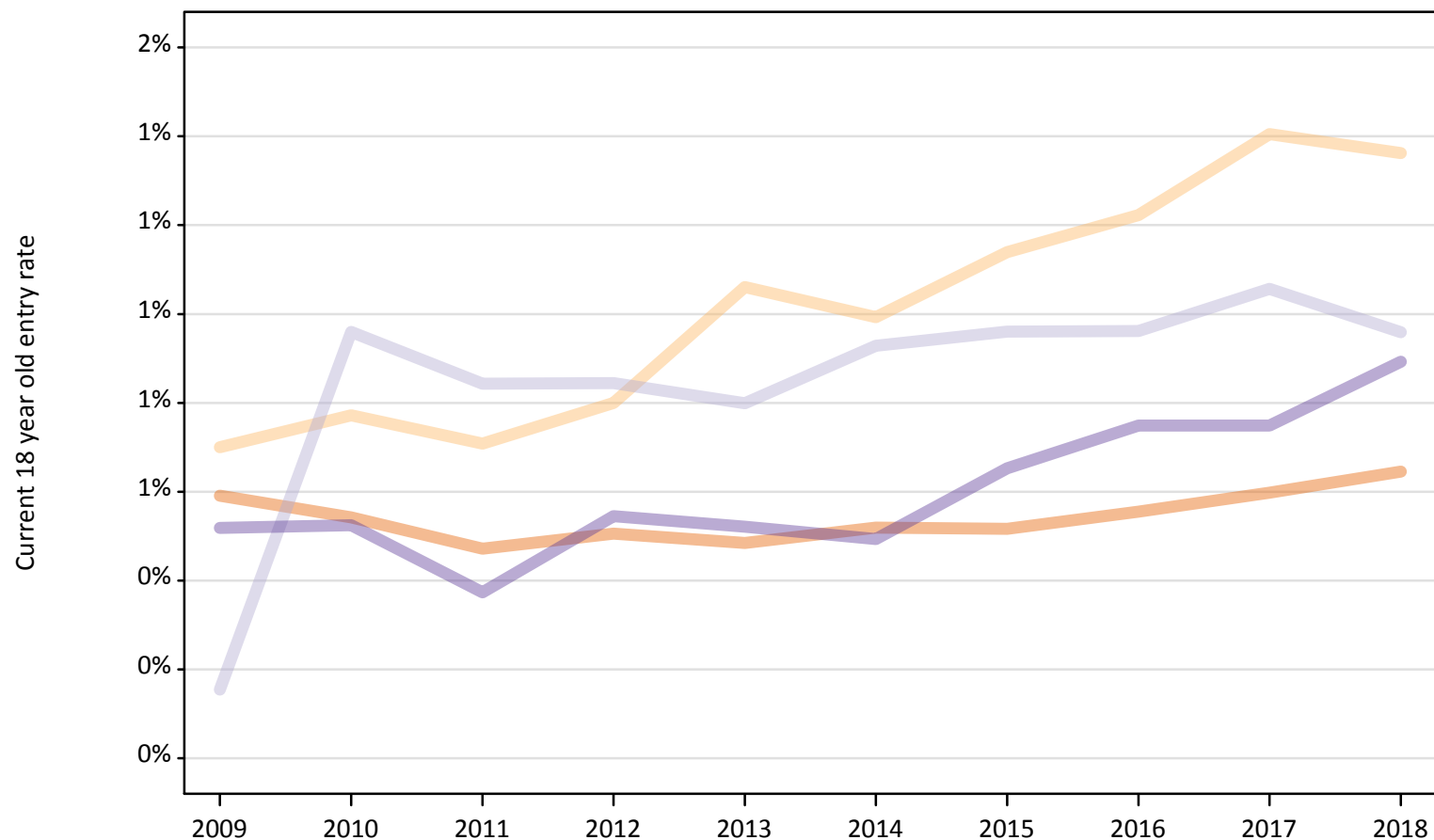
Domicile of applicant	Age group	2009	2010	2011	2012	2013	2014	2015	2016	2017	2018
Wales	17 and under										
	18	-21%	-21%	-46%	-21%	-26%	-30%	-8%	2%	0%	15%
	19	-51%	-42%	-27%	-35%	-28%	-30%	-11%	-1%	0%	-1%
	20 to 24	-29%	-39%	-44%	-24%	-16%	-23%	-1%	6%	0%	3%
	25 and over	-35%	-37%	-41%	-36%	-26%	-17%	3%	2%	0%	12%

Note: The percentage change is not recorded in the above table for groups with fewer than 10 placed applicants in that cycle or in the 2017 cycle.

CB.15 Entry rates to nursing for 18 year olds by UK country of domicile: 1 day after A level results day

Placed 18 year old applicants as a proportion of the 18 year old population

- England
- Northern Ireland
- Scotland
- Wales



CB.16 Entry rates to nursing for 18 year olds by UK country of domicile: 1 day after A level results day

Placed 18 year old applicants as a proportion of the 18 year old population

Domicile of applicant	Age group	2009	2010	2011	2012	2013	2014	2015	2016	2017	2018
England	18	0.6%	0.5%	0.5%	0.5%	0.5%	0.5%	0.5%	0.6%	0.6%	0.6%
Northern Ireland	18	0.7%	0.8%	0.7%	0.8%	1.1%	1.0%	1.1%	1.2%	1.4%	1.4%
Scotland	18	0.2%	1.0%	0.8%	0.8%	0.8%	0.9%	1.0%	1.0%	1.1%	1.0%
Wales	18	0.5%	0.5%	0.4%	0.5%	0.5%	0.5%	0.7%	0.7%	0.7%	0.9%