

# Daily Clearing Analysis: Age

## B7 Nursing analysis at 00:05 on Friday 24 August 2018 (8 days after A level results day)

### CB.1 Placed applicants to nursing by country of domicile and age group, 2018 cycle (8 days after A level results day)

| Domicile of applicant | Age group    |       |       |          |             |
|-----------------------|--------------|-------|-------|----------|-------------|
|                       | 17 and under | 18    | 19    | 20 to 24 | 25 and over |
| England               | 10           | 4,490 | 2,150 | 4,120    | 7,130       |
| Northern Ireland      | 0            | 330   | 170   | 260      | 230         |
| Scotland              | 20           | 560   | 310   | 760      | 1,440       |
| Wales                 | 0            | 340   | 180   | 410      | 650         |
| UK                    | 20           | 5,720 | 2,800 | 5,550    | 9,460       |

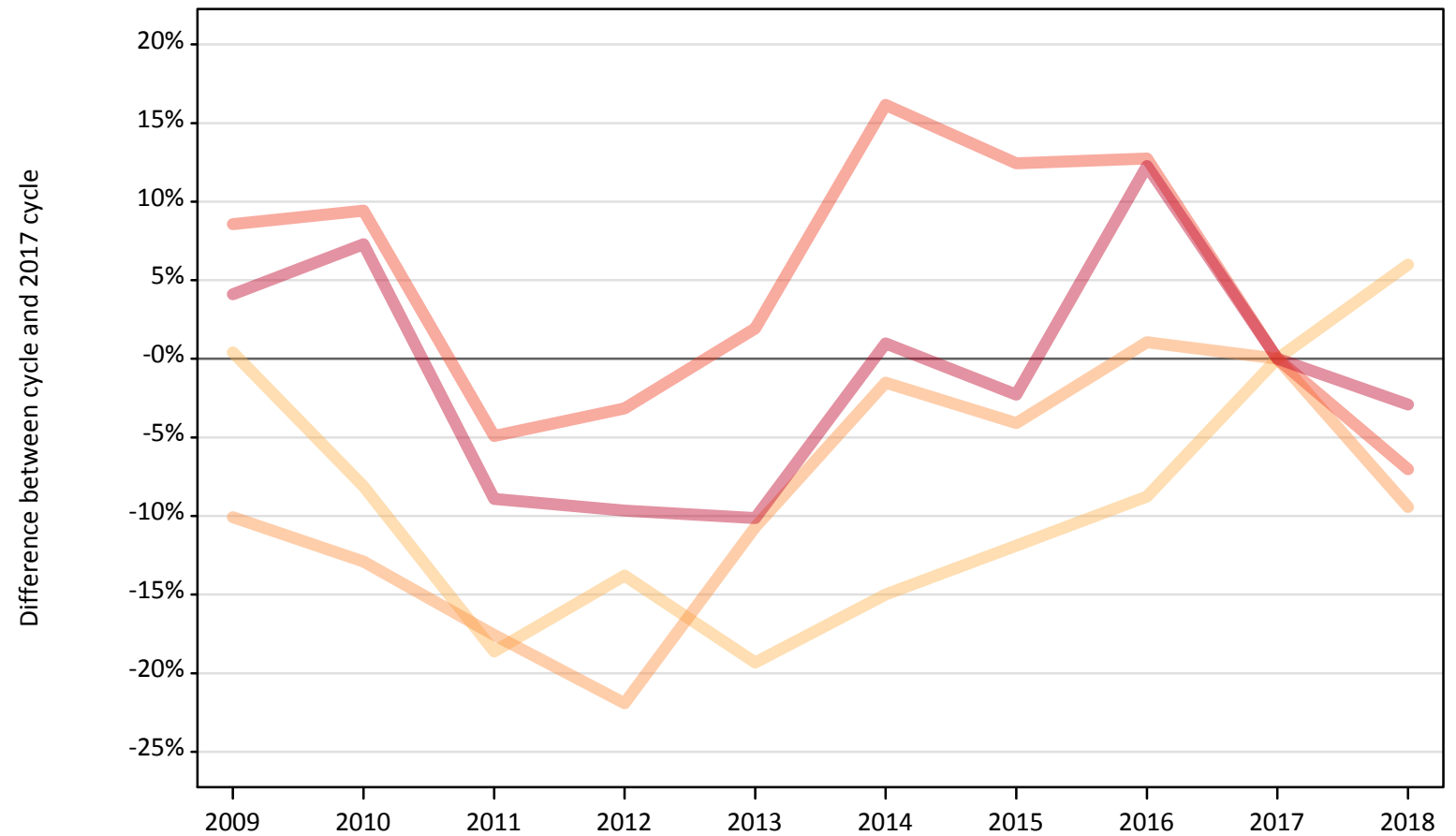
### CB.2 Proportion of 18 year old population placed to nursing by country of domicile, 2018 cycle (8 days after A level results day)

| Domicile of applicant | Age group | 2018 |
|-----------------------|-----------|------|
| England               | 18        | 0.7% |
| Northern Ireland      | 18        | 1.4% |
| Scotland              | 18        | 1.0% |
| Wales                 | 18        | 1.0% |

### CB.3 Placed applicants to nursing from England by age group at 8 days after A level results day

Selected age groups: difference between cycle and 2017 cycle

- 17 and under
- 18
- 19
- 20 to 24
- 25 and over



Note: The percentage change is not plotted in the above chart for groups with fewer than 30 placed applicants in any one cycle.

### CB.4 Placed applicants to nursing from England by age group at 8 days after A level results day

All age groups

| Domicile of applicant | Age group    | 2009  | 2010  | 2011  | 2012  | 2013  | 2014  | 2015  | 2016  | 2017  | 2018  |
|-----------------------|--------------|-------|-------|-------|-------|-------|-------|-------|-------|-------|-------|
| England               | 17 and under | 150   | 80    | 30    | 0     | 0     | 10    | 0     | 0     | 10    | 10    |
|                       | 18           | 4,250 | 3,890 | 3,450 | 3,650 | 3,420 | 3,600 | 3,730 | 3,870 | 4,240 | 4,490 |
|                       | 19           | 2,140 | 2,070 | 1,960 | 1,850 | 2,120 | 2,340 | 2,280 | 2,400 | 2,370 | 2,150 |
|                       | 20 to 24     | 4,810 | 4,850 | 4,210 | 4,290 | 4,510 | 5,140 | 4,980 | 4,990 | 4,430 | 4,120 |
|                       | 25 and over  | 7,650 | 7,880 | 6,690 | 6,640 | 6,600 | 7,420 | 7,180 | 8,250 | 7,350 | 7,130 |

### CB.5 Placed applicants to nursing from England by age group at 8 days after A level results day

Selected age groups: difference between cycle and 2017 cycle

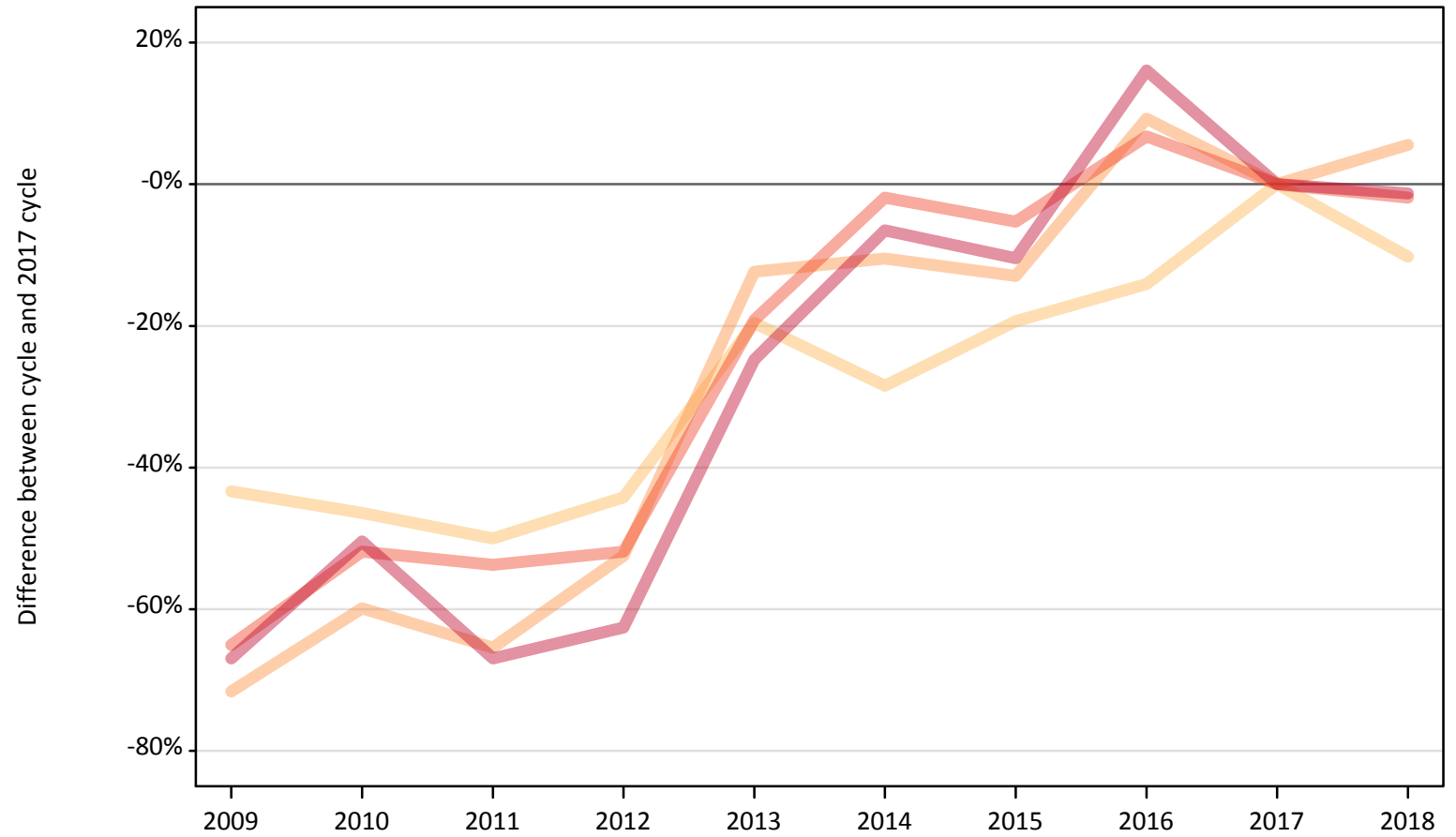
| Domicile of applicant | Age group    | 2009  | 2010  | 2011 | 2012 | 2013 | 2014 | 2015 | 2016 | 2017 | 2018 |
|-----------------------|--------------|-------|-------|------|------|------|------|------|------|------|------|
| England               | 17 and under | 2400% | 1233% | 317% |      |      | -17% |      |      | 0%   | -17% |
|                       | 18           | 0%    | -8%   | -19% | -14% | -19% | -15% | -12% | -9%  | 0%   | 6%   |
|                       | 19           | -10%  | -13%  | -18% | -22% | -11% | -2%  | -4%  | 1%   | 0%   | -9%  |
|                       | 20 to 24     | 9%    | 9%    | -5%  | -3%  | 2%   | 16%  | 12%  | 13%  | 0%   | -7%  |
|                       | 25 and over  | 4%    | 7%    | -9%  | -10% | -10% | 1%   | -2%  | 12%  | 0%   | -3%  |

Note: The percentage change is not recorded in the above table for groups with fewer than 10 placed applicants in that cycle or in the 2017 cycle.

## CB.6 Placed applicants to nursing from Northern Ireland by age group at 8 days after A level results day

Selected age groups: difference between cycle and 2017 cycle

- 17 and under
- 18
- 19
- 20 to 24
- 25 and over



Note: The percentage change is not plotted in the above chart for groups with fewer than 30 placed applicants in any one cycle.

### CB.7 Placed applicants to nursing from Northern Ireland by age group at 8 days after A level results day

All age groups

| Domicile of applicant | Age group    | 2009 | 2010 | 2011 | 2012 | 2013 | 2014 | 2015 | 2016 | 2017 | 2018 |
|-----------------------|--------------|------|------|------|------|------|------|------|------|------|------|
| Northern Ireland      | 17 and under | 0    | 0    | 0    | 0    | 0    | 0    | 0    | 0    | 0    | 0    |
|                       | 18           | 210  | 190  | 180  | 200  | 290  | 260  | 290  | 310  | 360  | 330  |
|                       | 19           | 50   | 70   | 60   | 80   | 140  | 150  | 140  | 180  | 160  | 170  |
|                       | 20 to 24     | 90   | 130  | 120  | 130  | 220  | 260  | 250  | 280  | 270  | 260  |
|                       | 25 and over  | 80   | 110  | 80   | 90   | 170  | 220  | 210  | 270  | 230  | 230  |

### CB.8 Placed applicants to nursing from Northern Ireland by age group at 8 days after A level results day

Selected age groups: difference between cycle and 2017 cycle

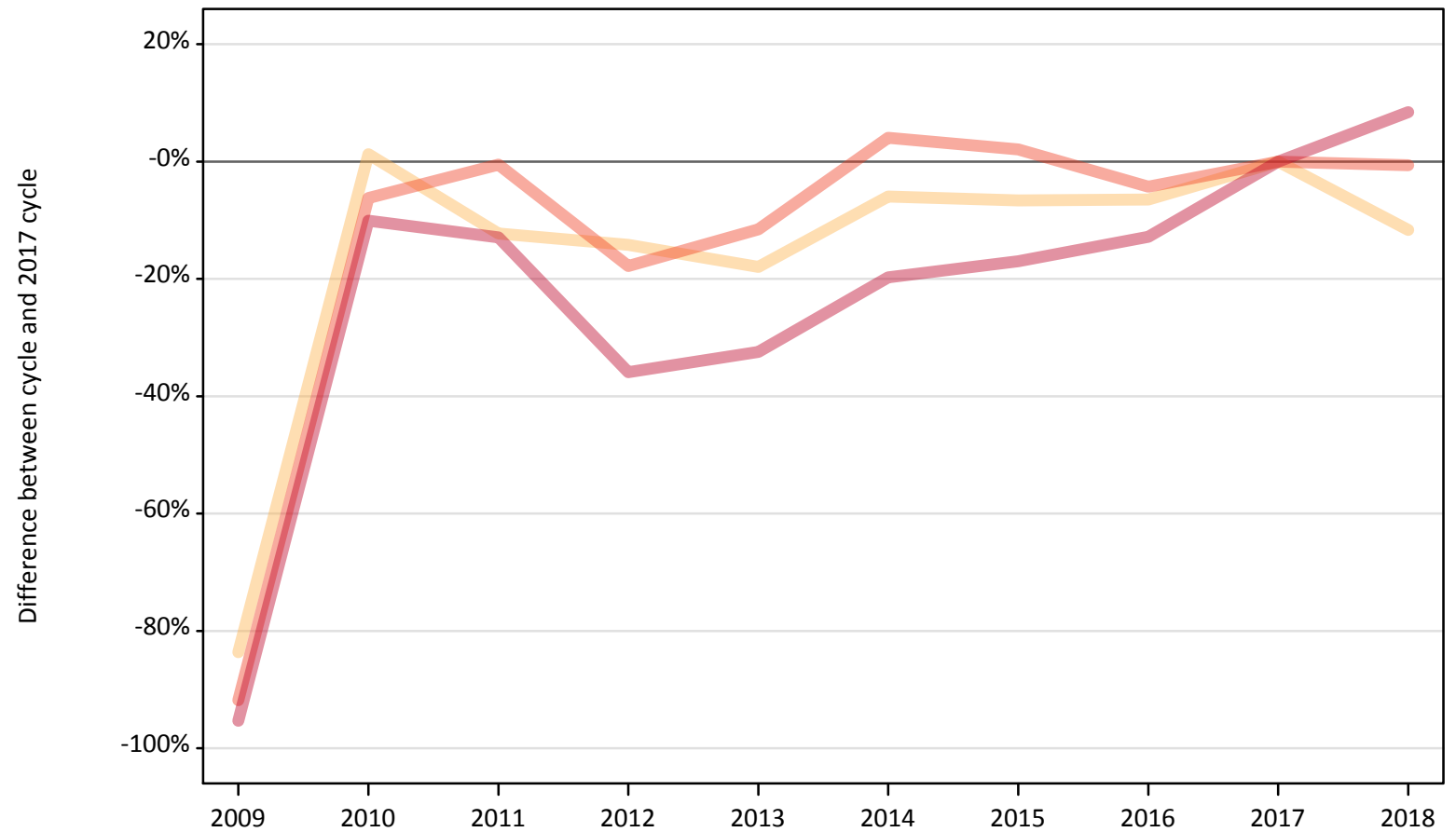
| Domicile of applicant | Age group    | 2009 | 2010 | 2011 | 2012 | 2013 | 2014 | 2015 | 2016 | 2017 | 2018 |
|-----------------------|--------------|------|------|------|------|------|------|------|------|------|------|
| Northern Ireland      | 17 and under |      |      |      |      |      |      |      |      |      |      |
|                       | 18           | -43% | -46% | -50% | -44% | -20% | -28% | -19% | -14% | 0%   | -10% |
|                       | 19           | -72% | -60% | -65% | -52% | -12% | -10% | -13% | 9%   | 0%   | 6%   |
|                       | 20 to 24     | -65% | -52% | -54% | -52% | -19% | -2%  | -5%  | 7%   | 0%   | -2%  |
|                       | 25 and over  | -67% | -50% | -67% | -63% | -25% | -7%  | -10% | 16%  | 0%   | -1%  |

Note: The percentage change is not recorded in the above table for groups with fewer than 10 placed applicants in that cycle or in the 2017 cycle.

### CB.9 Placed applicants to nursing from Scotland by age group at 8 days after A level results day

Selected age groups: difference between cycle and 2017 cycle

- 17 and under
- 18
- 19
- 20 to 24
- 25 and over



Note: The percentage change is not plotted in the above chart for groups with fewer than 30 placed applicants in any one cycle.

### CB.10 Placed applicants to nursing from Scotland by age group at 8 days after A level results day

All age groups

| Domicile of applicant | Age group    | 2009 | 2010  | 2011  | 2012 | 2013 | 2014  | 2015  | 2016  | 2017  | 2018  |
|-----------------------|--------------|------|-------|-------|------|------|-------|-------|-------|-------|-------|
| Scotland              | 17 and under | 0    | 40    | 20    | 20   | 20   | 20    | 10    | 20    | 20    | 20    |
|                       | 18           | 100  | 640   | 560   | 550  | 520  | 600   | 590   | 590   | 640   | 560   |
|                       | 19           | 30   | 320   | 290   | 280  | 300  | 320   | 300   | 330   | 300   | 310   |
|                       | 20 to 24     | 60   | 720   | 770   | 630  | 680  | 800   | 790   | 740   | 770   | 760   |
|                       | 25 and over  | 60   | 1,200 | 1,160 | 850  | 900  | 1,070 | 1,110 | 1,160 | 1,330 | 1,440 |

### CB.11 Placed applicants to nursing from Scotland by age group at 8 days after A level results day

Selected age groups: difference between cycle and 2017 cycle

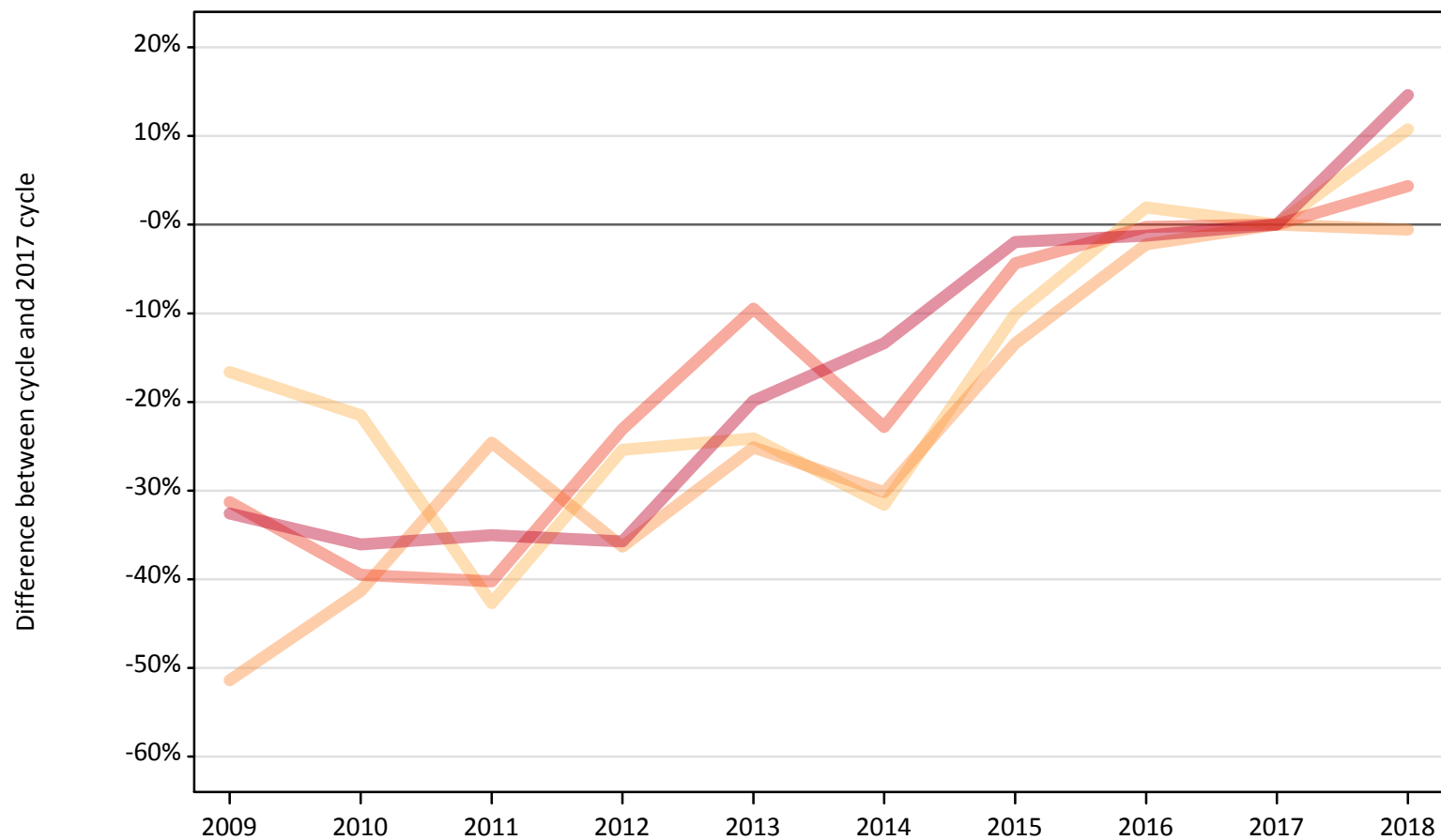
| Domicile of applicant | Age group    | 2009 | 2010 | 2011 | 2012 | 2013 | 2014 | 2015 | 2016 | 2017 | 2018 |
|-----------------------|--------------|------|------|------|------|------|------|------|------|------|------|
| Scotland              | 17 and under |      | 110% | 14%  | 5%   | 0%   | -19% | -38% | -24% | 0%   | -24% |
|                       | 18           | -84% | 1%   | -12% | -14% | -18% | -6%  | -7%  | -6%  | 0%   | -12% |
|                       | 19           | -91% | 6%   | -3%  | -7%  | -1%  | 8%   | 1%   | 9%   | 0%   | 2%   |
|                       | 20 to 24     | -92% | -6%  | -1%  | -18% | -12% | 4%   | 2%   | -4%  | 0%   | -1%  |
|                       | 25 and over  | -95% | -10% | -13% | -36% | -32% | -20% | -17% | -13% | 0%   | 8%   |

Note: The percentage change is not recorded in the above table for groups with fewer than 10 placed applicants in that cycle or in the 2017 cycle.

## CB.12 Placed applicants to nursing from Wales by age group at 8 days after A level results day

Selected age groups: difference between cycle and 2017 cycle

- 17 and under
- 18
- 19
- 20 to 24
- 25 and over



Note: The percentage change is not plotted in the above chart for groups with fewer than 30 placed applicants in any one cycle.



**CB.13 Placed applicants to nursing from Wales by age group at 8 days after A level results day**

All age groups

| Domicile of applicant | Age group    | 2009 | 2010 | 2011 | 2012 | 2013 | 2014 | 2015 | 2016 | 2017 | 2018 |
|-----------------------|--------------|------|------|------|------|------|------|------|------|------|------|
| Wales                 | 17 and under | 0    | 0    | 0    | 0    | 0    | 0    | 0    | 0    | 0    | 0    |
|                       | 18           | 260  | 240  | 180  | 230  | 230  | 210  | 280  | 310  | 310  | 340  |
|                       | 19           | 90   | 110  | 140  | 110  | 130  | 130  | 160  | 180  | 180  | 180  |
|                       | 20 to 24     | 270  | 240  | 230  | 300  | 350  | 300  | 370  | 390  | 390  | 410  |
|                       | 25 and over  | 380  | 360  | 370  | 370  | 460  | 490  | 560  | 560  | 570  | 650  |

**CB.14 Placed applicants to nursing from Wales by age group at 8 days after A level results day**

Selected age groups: difference between cycle and 2017 cycle

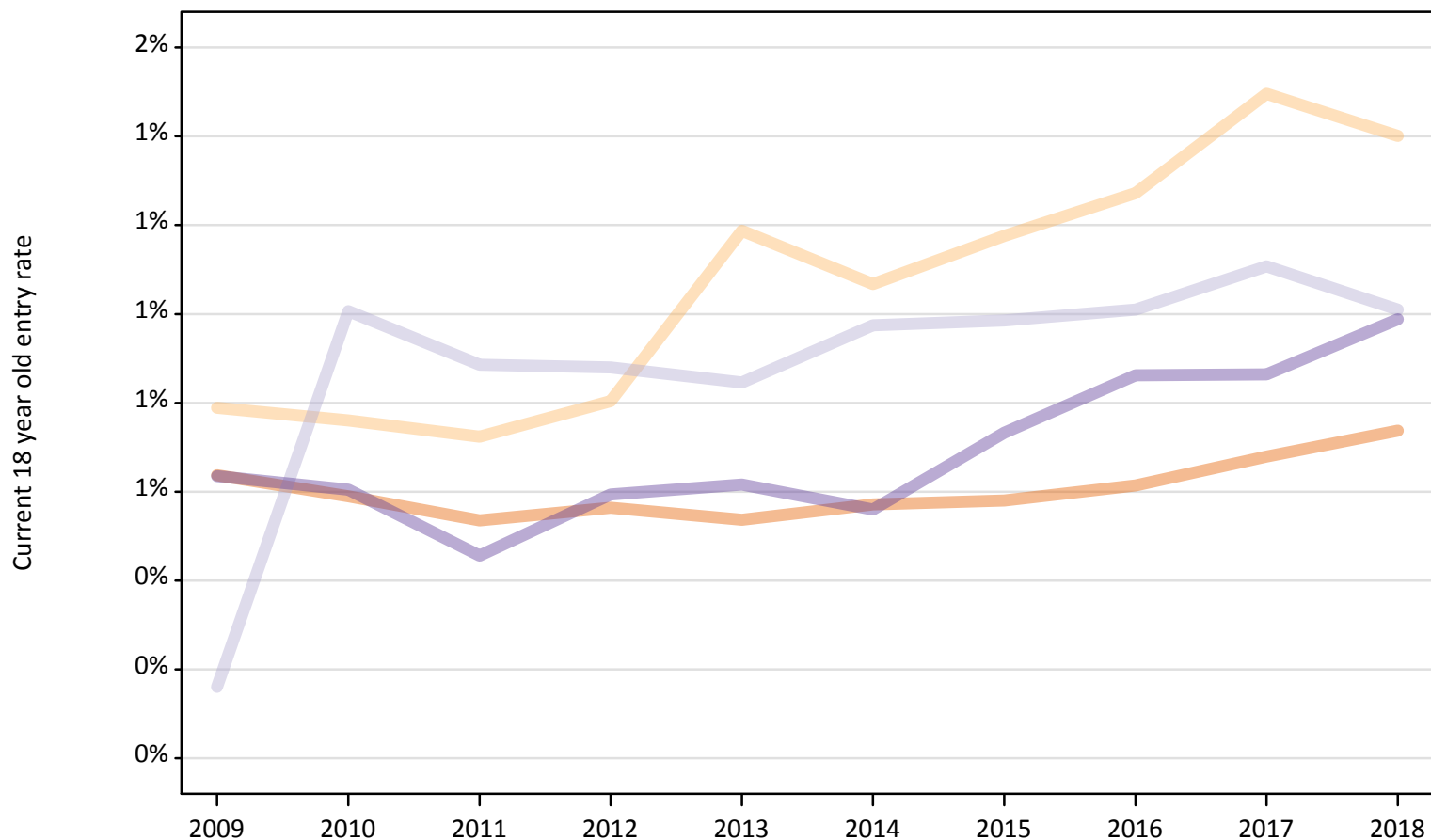
| Domicile of applicant | Age group    | 2009 | 2010 | 2011 | 2012 | 2013 | 2014 | 2015 | 2016 | 2017 | 2018 |
|-----------------------|--------------|------|------|------|------|------|------|------|------|------|------|
| Wales                 | 17 and under |      |      |      |      |      |      |      |      |      |      |
|                       | 18           | -17% | -21% | -43% | -25% | -24% | -32% | -10% | 2%   | 0%   | 11%  |
|                       | 19           | -51% | -41% | -25% | -36% | -25% | -30% | -13% | -2%  | 0%   | -1%  |
|                       | 20 to 24     | -31% | -39% | -40% | -23% | -9%  | -23% | -4%  | -0%  | 0%   | 4%   |
|                       | 25 and over  | -33% | -36% | -35% | -36% | -20% | -13% | -2%  | -1%  | 0%   | 15%  |

Note: The percentage change is not recorded in the above table for groups with fewer than 10 placed applicants in that cycle or in the 2017 cycle.

**CB.15 Entry rates to nursing for 18 year olds by UK country of domicile: 8 days after A level results day**

Placed 18 year old applicants as a proportion of the 18 year old population

- England
- Northern Ireland
- Scotland
- Wales



**CB.16 Entry rates to nursing for 18 year olds by UK country of domicile: 8 days after A level results day**

Placed 18 year old applicants as a proportion of the 18 year old population

| Domicile of applicant | Age group | 2009 | 2010 | 2011 | 2012 | 2013 | 2014 | 2015 | 2016 | 2017 | 2018 |
|-----------------------|-----------|------|------|------|------|------|------|------|------|------|------|
| England               | 18        | 0.6% | 0.6% | 0.5% | 0.6% | 0.5% | 0.6% | 0.6% | 0.6% | 0.7% | 0.7% |
| Northern Ireland      | 18        | 0.8% | 0.8% | 0.7% | 0.8% | 1.2% | 1.1% | 1.2% | 1.3% | 1.5% | 1.4% |
| Scotland              | 18        | 0.2% | 1.0% | 0.9% | 0.9% | 0.8% | 1.0% | 1.0% | 1.0% | 1.1% | 1.0% |
| Wales                 | 18        | 0.6% | 0.6% | 0.5% | 0.6% | 0.6% | 0.6% | 0.7% | 0.9% | 0.9% | 1.0% |