

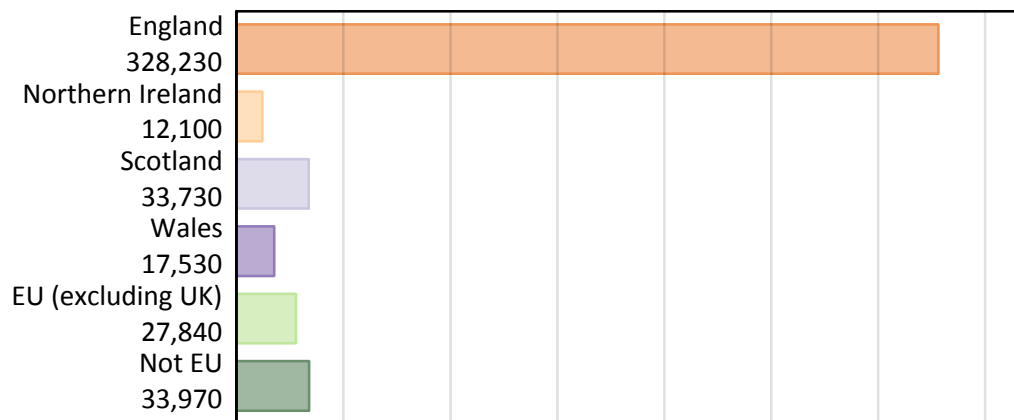
# Daily Clearing Analysis: Country

Analysis at 00:05 on Monday 20 August 2018 (4 days after A level results day)

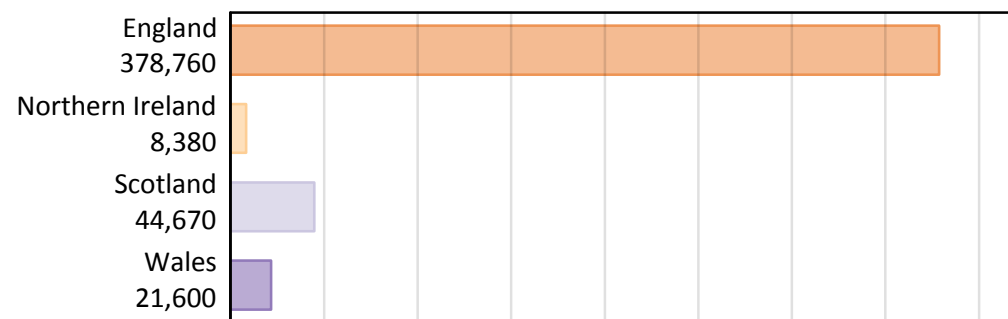
B.1 Placed applicants by country of provider and domicile, 2018 cycle

Domicile of applicant	Country of provider				
	England	Northern Ireland	Scotland	Wales	UK
England	313,890	290	4,540	9,520	328,230
Northern Ireland	3,560	7,450	960	140	12,100
Scotland	1,400	30	32,260	40	33,730
Wales	7,460	10	140	9,920	17,530
EU (excluding UK)	22,480	360	3,950	1,050	27,840
Not EU	29,960	250	2,830	930	33,970
All	378,760	8,380	44,670	21,600	453,410

## B.2 Placed applicants by domicile group



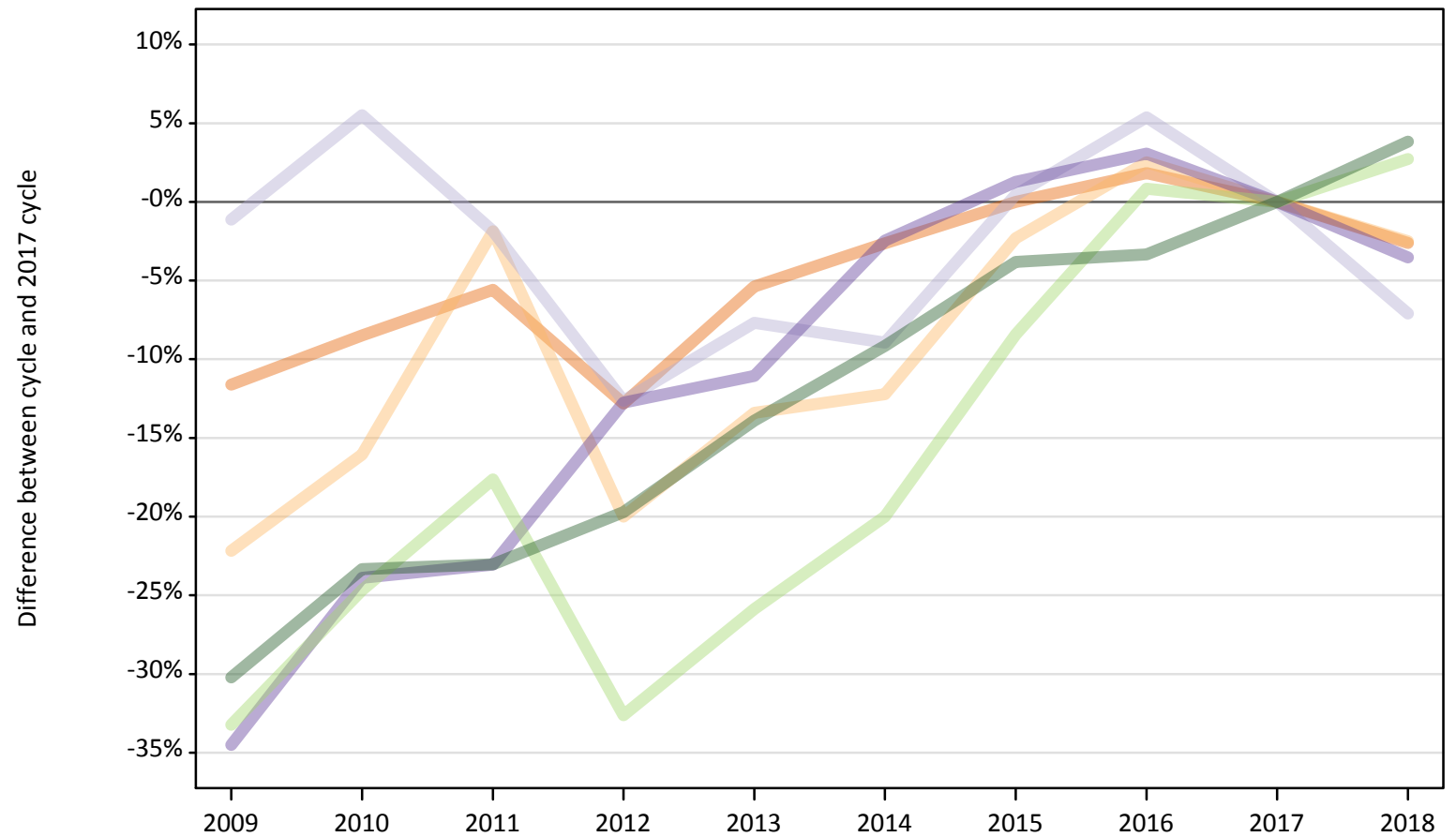
## B.3 Placed applicants by country of provider



### B.4 Placed applicants at 4 days after A level results day: providers in England

Selected applicant domiciles: difference between cycle and 2017 cycle (at 4 days after A level results day)

- England
- Northern Ireland
- Scotland
- Wales
- EU (excluding UK)
- Not EU



Note: The percentage change is not plotted in the above chart for groups with fewer than 30 placed applicants in any one cycle.

### B.5 Placed applicants at 4 days after A level results day: providers in England

Placed applicants by domicile (at 4 days after A level results day)

Domicile of applicant	2009	2010	2011	2012	2013	2014	2015	2016	2017	2018
England	284,890	294,950	304,300	281,020	304,950	313,840	322,270	328,160	322,300	313,890
Northern Ireland	2,840	3,060	3,580	2,920	3,160	3,200	3,570	3,740	3,650	3,560
Scotland	1,490	1,590	1,480	1,320	1,390	1,380	1,520	1,590	1,510	1,400
Wales	5,060	5,880	5,950	6,740	6,880	7,540	7,830	7,970	7,730	7,460
EU (excluding UK)	14,620	16,490	18,030	14,750	16,230	17,510	20,040	22,070	21,890	22,480
Not EU	20,140	22,130	22,210	23,170	24,850	26,220	27,760	27,900	28,860	29,960

### B.6 Placed applicants at 4 days after A level results day: providers in England

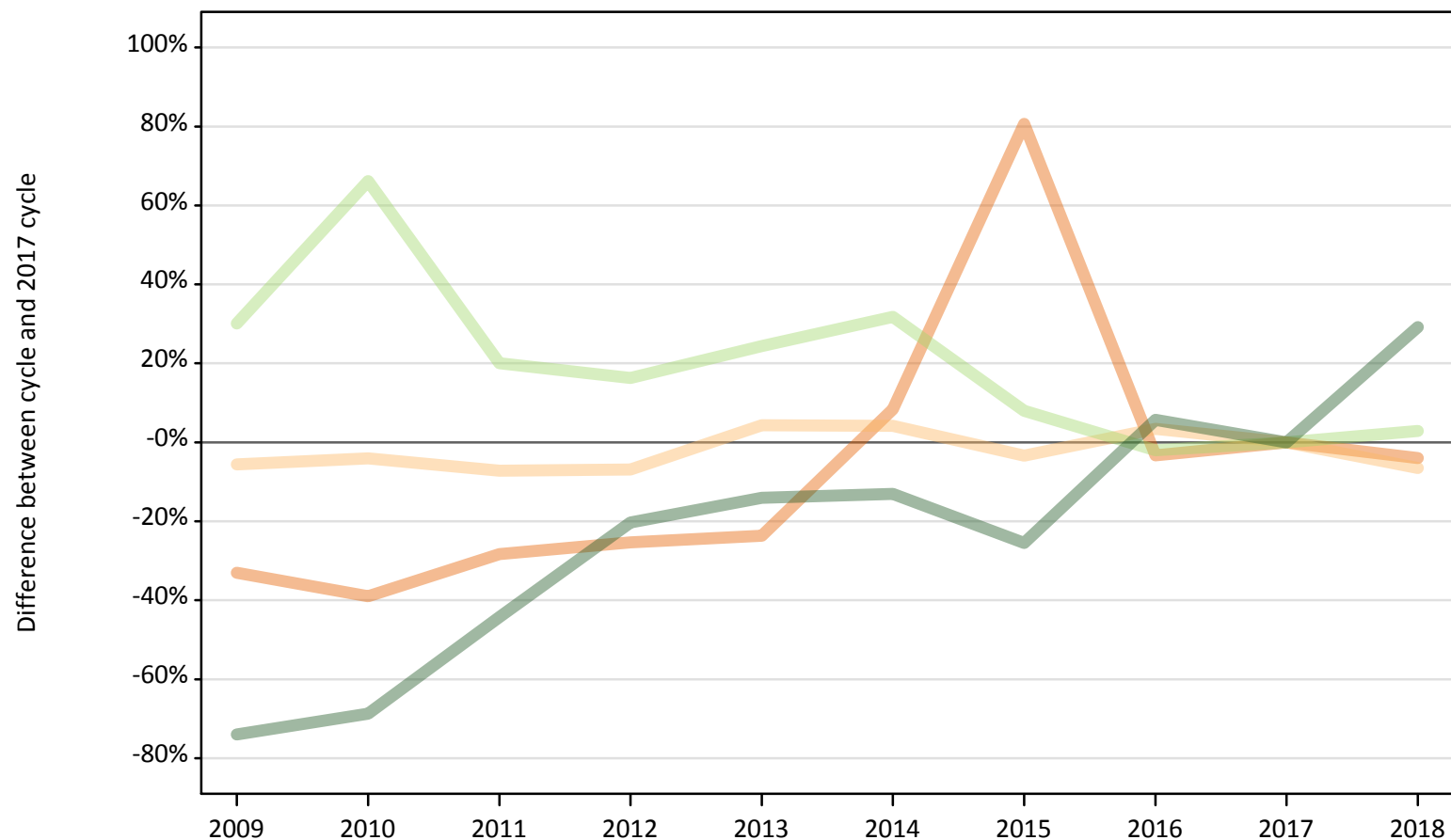
Selected applicant domiciles: difference between cycle and 2017 cycle (at 4 days after A level results day)

Domicile of applicant	2009	2010	2011	2012	2013	2014	2015	2016	2017	2018
England	-12%	-8%	-6%	-13%	-5%	-3%	-0%	2%	0%	-3%
Northern Ireland	-22%	-16%	-2%	-20%	-13%	-12%	-2%	3%	0%	-2%
Scotland	-1%	5%	-2%	-13%	-8%	-9%	0%	5%	0%	-7%
Wales	-35%	-24%	-23%	-13%	-11%	-2%	1%	3%	0%	-4%
EU (excluding UK)	-33%	-25%	-18%	-33%	-26%	-20%	-8%	1%	0%	3%
Not EU	-30%	-23%	-23%	-20%	-14%	-9%	-4%	-3%	0%	4%

Note: The percentage change is not recorded in the above table for groups with fewer than 10 placed applicants in that cycle or in the 2017 cycle.

**B.7 Placed applicants at 4 days after A level results day: providers in Northern Ireland**  
Selected applicant domiciles: difference between cycle and 2017 cycle (at 4 days after A level results day)

- England
- Northern Ireland
- Scotland
- Wales
- EU (excluding UK)
- Not EU



Note: The percentage change is not plotted in the above chart for groups with fewer than 30 placed applicants in any one cycle.

### B.8 Placed applicants at 4 days after A level results day: providers in Northern Ireland

Placed applicants by domicile (at 4 days after A level results day)

Domicile of applicant	2009	2010	2011	2012	2013	2014	2015	2016	2017	2018
England	200	180	220	220	230	330	540	290	300	290
Northern Ireland	7,520	7,640	7,390	7,420	8,310	8,290	7,690	8,240	7,960	7,450
Scotland	20	20	20	30	10	20	20	20	30	30
Wales	10	10	10	0	0	10	10	10	10	10
EU (excluding UK)	450	580	420	410	430	460	380	340	350	360
Not EU	50	60	110	150	170	170	140	200	190	250

### B.9 Placed applicants at 4 days after A level results day: providers in Northern Ireland

Selected applicant domiciles: difference between cycle and 2017 cycle (at 4 days after A level results day)

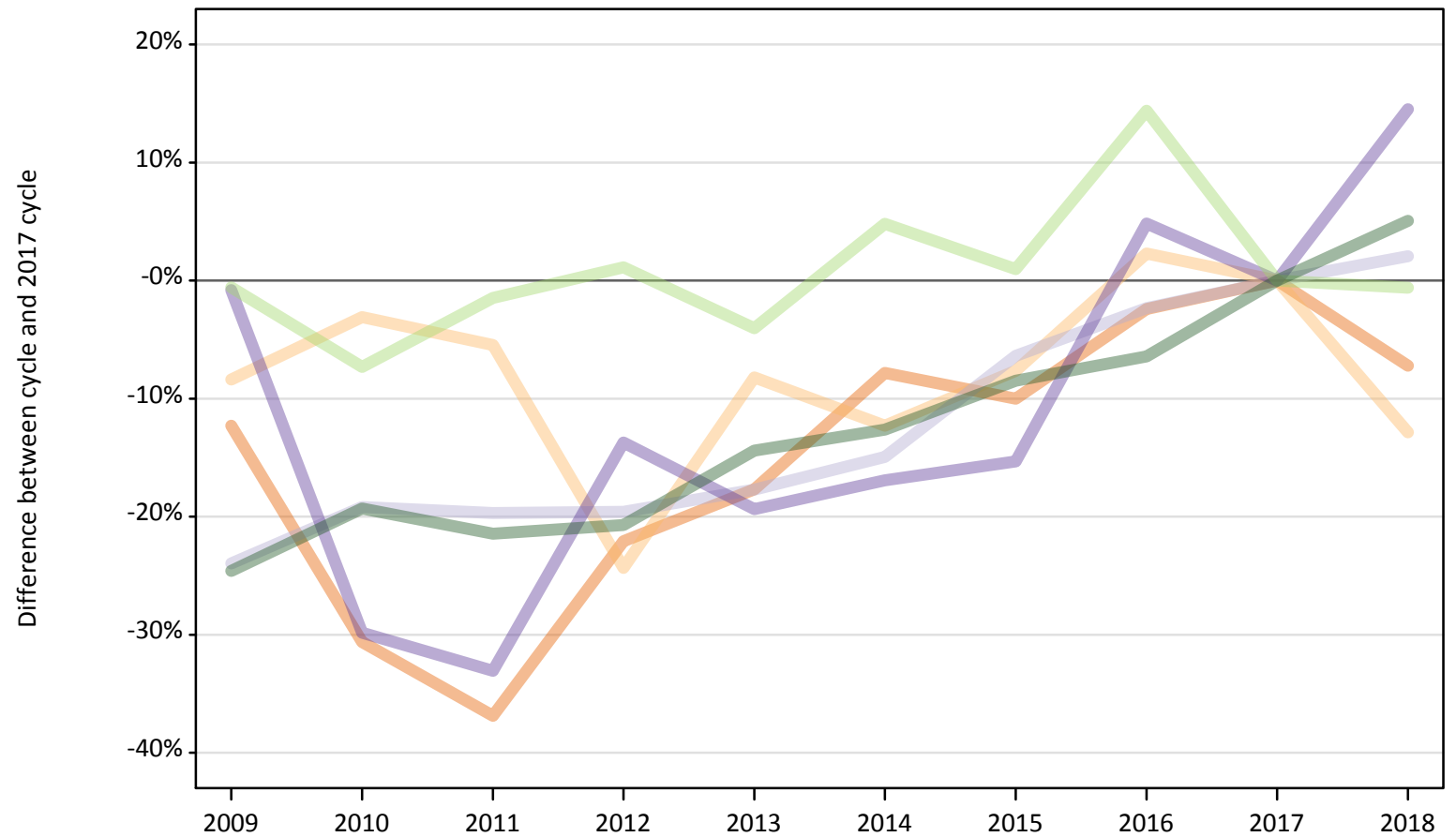
Domicile of applicant	2009	2010	2011	2012	2013	2014	2015	2016	2017	2018
England	-33%	-39%	-28%	-25%	-24%	8%	81%	-3%	0%	-4%
Northern Ireland	-6%	-4%	-7%	-7%	4%	4%	-3%	3%	0%	-6%
Scotland	-41%	-24%	-41%	-7%	-59%	-45%	-41%	-45%	0%	-14%
Wales	-21%	-57%	-50%			-50%	-21%	-36%	0%	-29%
EU (excluding UK)	30%	66%	20%	16%	24%	32%	8%	-2%	0%	3%
Not EU	-74%	-69%	-44%	-20%	-14%	-13%	-26%	6%	0%	29%

Note: The percentage change is not recorded in the above table for groups with fewer than 10 placed applicants in that cycle or in the 2017 cycle.

### B.10 Placed applicants at 4 days after A level results day: providers in Scotland

Selected applicant domiciles: difference between cycle and 2017 cycle (at 4 days after A level results day)

- England
- Northern Ireland
- Scotland
- Wales
- EU (excluding UK)
- Not EU



Note: The percentage change is not plotted in the above chart for groups with fewer than 30 placed applicants in any one cycle.

**B.11 Placed applicants at 4 days after A level results day: providers in Scotland**

Placed applicants by domicile (at 4 days after A level results day)

Domicile of applicant	2009	2010	2011	2012	2013	2014	2015	2016	2017	2018
England	4,290	3,390	3,090	3,810	4,020	4,510	4,400	4,770	4,890	4,540
Northern Ireland	1,010	1,060	1,040	830	1,010	960	1,010	1,120	1,100	960
Scotland	24,040	25,540	25,390	25,420	26,010	26,890	29,590	30,870	31,610	32,260
Wales	120	90	80	110	100	100	110	130	120	140
EU (excluding UK)	3,950	3,680	3,920	4,020	3,810	4,170	4,010	4,550	3,970	3,950
Not EU	2,030	2,170	2,110	2,130	2,300	2,350	2,460	2,520	2,690	2,830

**B.12 Placed applicants at 4 days after A level results day: providers in Scotland**

Selected applicant domiciles: difference between cycle and 2017 cycle (at 4 days after A level results day)

Domicile of applicant	2009	2010	2011	2012	2013	2014	2015	2016	2017	2018
England	-12%	-31%	-37%	-22%	-18%	-8%	-10%	-2%	0%	-7%
Northern Ireland	-8%	-3%	-5%	-24%	-8%	-12%	-8%	2%	0%	-13%
Scotland	-24%	-19%	-20%	-20%	-18%	-15%	-6%	-2%	0%	2%
Wales	-1%	-30%	-33%	-14%	-19%	-17%	-15%	5%	0%	15%
EU (excluding UK)	-1%	-7%	-1%	1%	-4%	5%	1%	14%	0%	-1%
Not EU	-25%	-19%	-21%	-21%	-14%	-13%	-8%	-6%	0%	5%

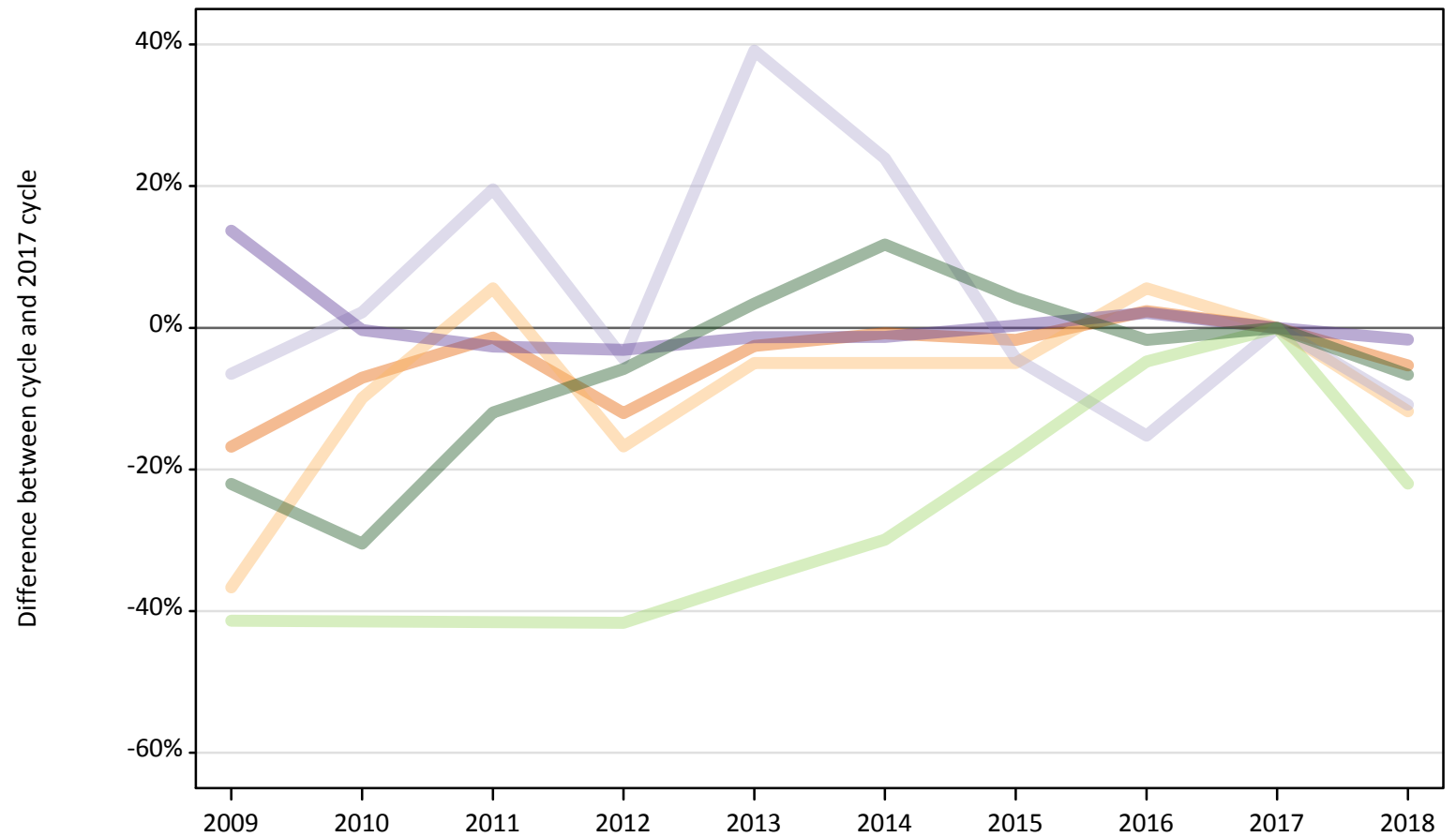
Note: The percentage change is not recorded in the above table for groups with fewer than 10 placed applicants in that cycle or in the 2017 cycle.



### B.13 Placed applicants at 4 days after A level results day: providers in Wales

Selected applicant domiciles: difference between cycle and 2017 cycle (at 4 days after A level results day)

- England
- Northern Ireland
- Scotland
- Wales
- EU (excluding UK)
- Not EU



Note: The percentage change is not plotted in the above chart for groups with fewer than 30 placed applicants in any one cycle.

**B.14 Placed applicants at 4 days after A level results day: providers in Wales**

Placed applicants by domicile (at 4 days after A level results day)

Domicile of applicant	2009	2010	2011	2012	2013	2014	2015	2016	2017	2018
England	8,370	9,350	9,920	8,840	9,800	9,970	9,880	10,290	10,050	9,520
Northern Ireland	100	150	170	130	150	150	150	170	160	140
Scotland	40	50	60	40	60	60	40	40	50	40
Wales	11,470	10,060	9,820	9,780	9,960	9,960	10,120	10,300	10,090	9,920
EU (excluding UK)	790	790	790	790	870	940	1,110	1,280	1,350	1,050
Not EU	780	690	880	940	1,030	1,110	1,040	980	990	930

**B.15 Placed applicants at 4 days after A level results day: providers in Wales**

Selected applicant domiciles: difference between cycle and 2017 cycle (at 4 days after A level results day)

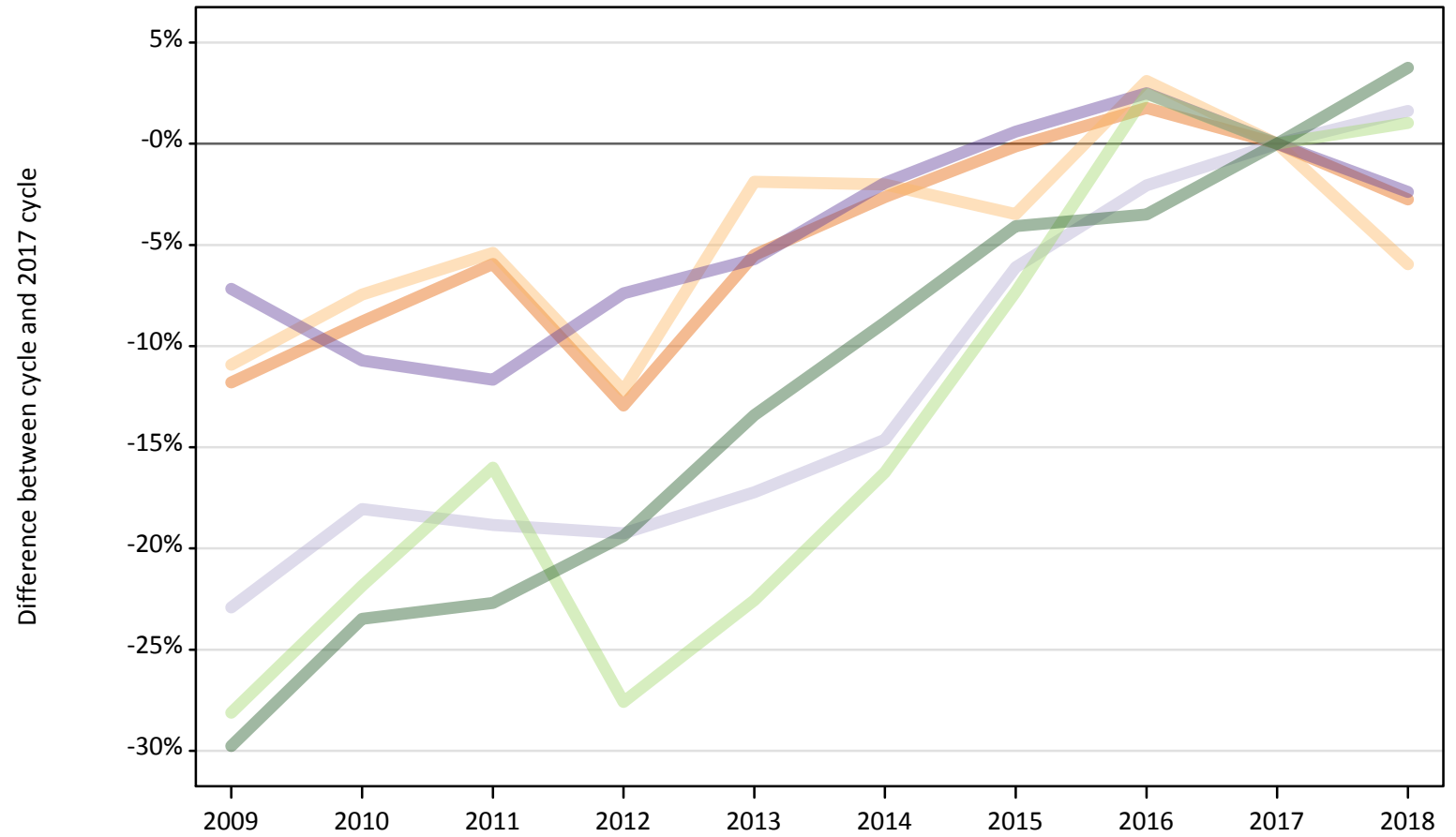
Domicile of applicant	2009	2010	2011	2012	2013	2014	2015	2016	2017	2018
England	-17%	-7%	-1%	-12%	-3%	-1%	-2%	2%	0%	-5%
Northern Ireland	-37%	-10%	6%	-17%	-5%	-5%	-5%	6%	0%	-12%
Scotland	-7%	2%	20%	-4%	39%	24%	-4%	-15%	0%	-11%
Wales	14%	-0%	-3%	-3%	-1%	-1%	0%	2%	0%	-2%
EU (excluding UK)	-41%	-41%	-42%	-42%	-36%	-30%	-18%	-5%	0%	-22%
Not EU	-22%	-30%	-12%	-6%	3%	12%	4%	-2%	0%	-7%

Note: The percentage change is not recorded in the above table for groups with fewer than 10 placed applicants in that cycle or in the 2017 cycle.

### B.16 Placed applicants at 4 days after A level results day: providers in the UK

Selected applicant domiciles: difference between cycle and 2017 cycle (at 4 days after A level results day)

- England
- Northern Ireland
- Scotland
- Wales
- EU (excluding UK)
- Not EU



Note: The percentage change is not plotted in the above chart for groups with fewer than 30 placed applicants in any one cycle.

**B.17 Placed applicants at 4 days after A level results day: providers in the UK**

Placed applicants by domicile (at 4 days after A level results day)

Domicile of applicant	2009	2010	2011	2012	2013	2014	2015	2016	2017	2018
England	297,740	307,870	317,510	293,890	319,000	328,640	337,090	343,510	337,540	328,230
Northern Ireland	11,460	11,910	12,180	11,300	12,630	12,610	12,420	13,270	12,870	12,100
Scotland	25,590	27,200	26,940	26,810	27,480	28,340	31,170	32,510	33,190	33,730
Wales	16,670	16,040	15,860	16,630	16,930	17,610	18,070	18,410	17,960	17,530
EU (excluding UK)	19,810	21,540	23,150	19,960	21,340	23,080	25,540	28,240	27,560	27,840
Not EU	23,000	25,050	25,310	26,390	28,350	29,850	31,400	31,600	32,740	33,970

**B.18 Placed applicants at 4 days after A level results day: providers in the UK**

Selected applicant domiciles: difference between cycle and 2017 cycle (at 4 days after A level results day)

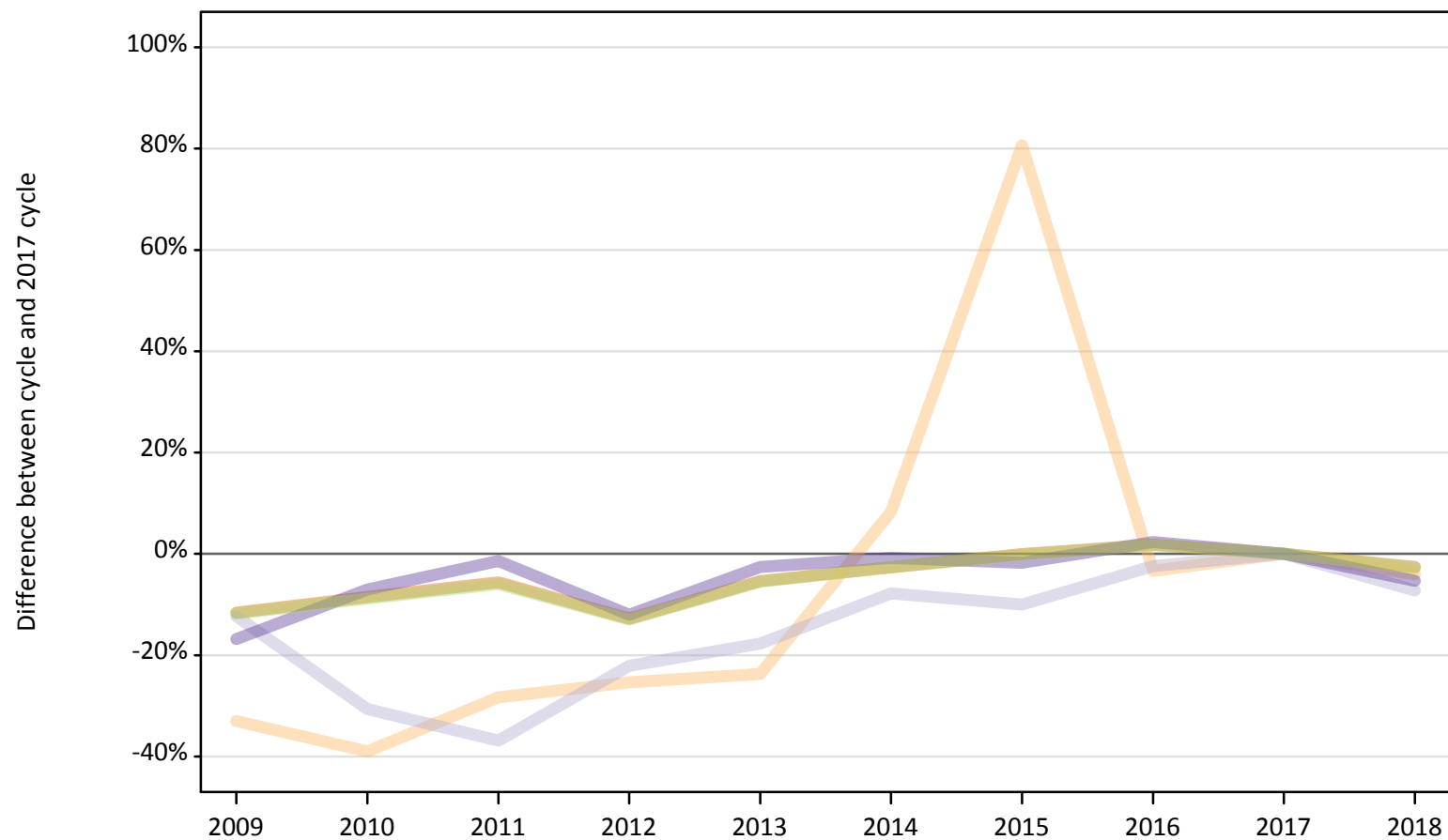
Domicile of applicant	2009	2010	2011	2012	2013	2014	2015	2016	2017	2018
England	-12%	-9%	-6%	-13%	-5%	-3%	-0%	2%	0%	-3%
Northern Ireland	-11%	-7%	-5%	-12%	-2%	-2%	-3%	3%	0%	-6%
Scotland	-23%	-18%	-19%	-19%	-17%	-15%	-6%	-2%	0%	2%
Wales	-7%	-11%	-12%	-7%	-6%	-2%	1%	3%	0%	-2%
EU (excluding UK)	-28%	-22%	-16%	-28%	-23%	-16%	-7%	2%	0%	1%
Not EU	-30%	-23%	-23%	-19%	-13%	-9%	-4%	-3%	0%	4%

Note: The percentage change is not recorded in the above table for groups with fewer than 10 placed applicants in that cycle or in the 2017 cycle.

### B.19 Placed applicants at 4 days after A level results day: domiciled in England

Selected provider countries: difference between cycle and 2017 cycle (at 4 days after A level results day)

- England
- Northern Ireland
- Scotland
- Wales
- UK



Note: The percentage change is not plotted in the above chart for groups with fewer than 30 placed applicants in any one cycle.

**B.20 Placed applicants at 4 days after A level results day: domiciled in England**

Placed applicants by provider country (at 4 days after A level results day)

Country of provider	2009	2010	2011	2012	2013	2014	2015	2016	2017	2018
England	284,890	294,950	304,300	281,020	304,950	313,840	322,270	328,160	322,300	313,890
Northern Ireland	200	180	220	220	230	330	540	290	300	290
Scotland	4,290	3,390	3,090	3,810	4,020	4,510	4,400	4,770	4,890	4,540
Wales	8,370	9,350	9,920	8,840	9,800	9,970	9,880	10,290	10,050	9,520
UK	297,740	307,870	317,510	293,890	319,000	328,640	337,090	343,510	337,540	328,230

**B.21 Placed applicants at 4 days after A level results day: domiciled in England**

Selected provider countries: difference between cycle and 2017 cycle (at 4 days after A level results day)

Country of provider	2009	2010	2011	2012	2013	2014	2015	2016	2017	2018
England	-12%	-8%	-6%	-13%	-5%	-3%	-0%	2%	0%	-3%
Northern Ireland	-33%	-39%	-28%	-25%	-24%	8%	81%	-3%	0%	-4%
Scotland	-12%	-31%	-37%	-22%	-18%	-8%	-10%	-2%	0%	-7%
Wales	-17%	-7%	-1%	-12%	-3%	-1%	-2%	2%	0%	-5%
UK	-12%	-9%	-6%	-13%	-5%	-3%	-0%	2%	0%	-3%

Note: The percentage change is not recorded in the above table for groups with fewer than 10 placed applicants in that cycle or in the 2017 cycle.

## B.22 Placed applicants at 4 days after A level results day: domiciled in Northern Ireland

Selected provider countries: difference between cycle and 2017 cycle (at 4 days after A level results day)

- England
- Northern Ireland
- Scotland
- Wales
- UK



Note: The percentage change is not plotted in the above chart for groups with fewer than 30 placed applicants in any one cycle.

### B.23 Placed applicants at 4 days after A level results day: domiciled in Northern Ireland

Placed applicants by provider country (at 4 days after A level results day)

Country of provider	2009	2010	2011	2012	2013	2014	2015	2016	2017	2018
England	2,840	3,060	3,580	2,920	3,160	3,200	3,570	3,740	3,650	3,560
Northern Ireland	7,520	7,640	7,390	7,420	8,310	8,290	7,690	8,240	7,960	7,450
Scotland	1,010	1,060	1,040	830	1,010	960	1,010	1,120	1,100	960
Wales	100	150	170	130	150	150	150	170	160	140
UK	11,460	11,910	12,180	11,300	12,630	12,610	12,420	13,270	12,870	12,100

### B.24 Placed applicants at 4 days after A level results day: domiciled in Northern Ireland

Selected provider countries: difference between cycle and 2017 cycle (at 4 days after A level results day)

Country of provider	2009	2010	2011	2012	2013	2014	2015	2016	2017	2018
England	-22%	-16%	-2%	-20%	-13%	-12%	-2%	3%	0%	-2%
Northern Ireland	-6%	-4%	-7%	-7%	4%	4%	-3%	3%	0%	-6%
Scotland	-8%	-3%	-5%	-24%	-8%	-12%	-8%	2%	0%	-13%
Wales	-37%	-10%	6%	-17%	-5%	-5%	-5%	6%	0%	-12%
UK	-11%	-7%	-5%	-12%	-2%	-2%	-3%	3%	0%	-6%

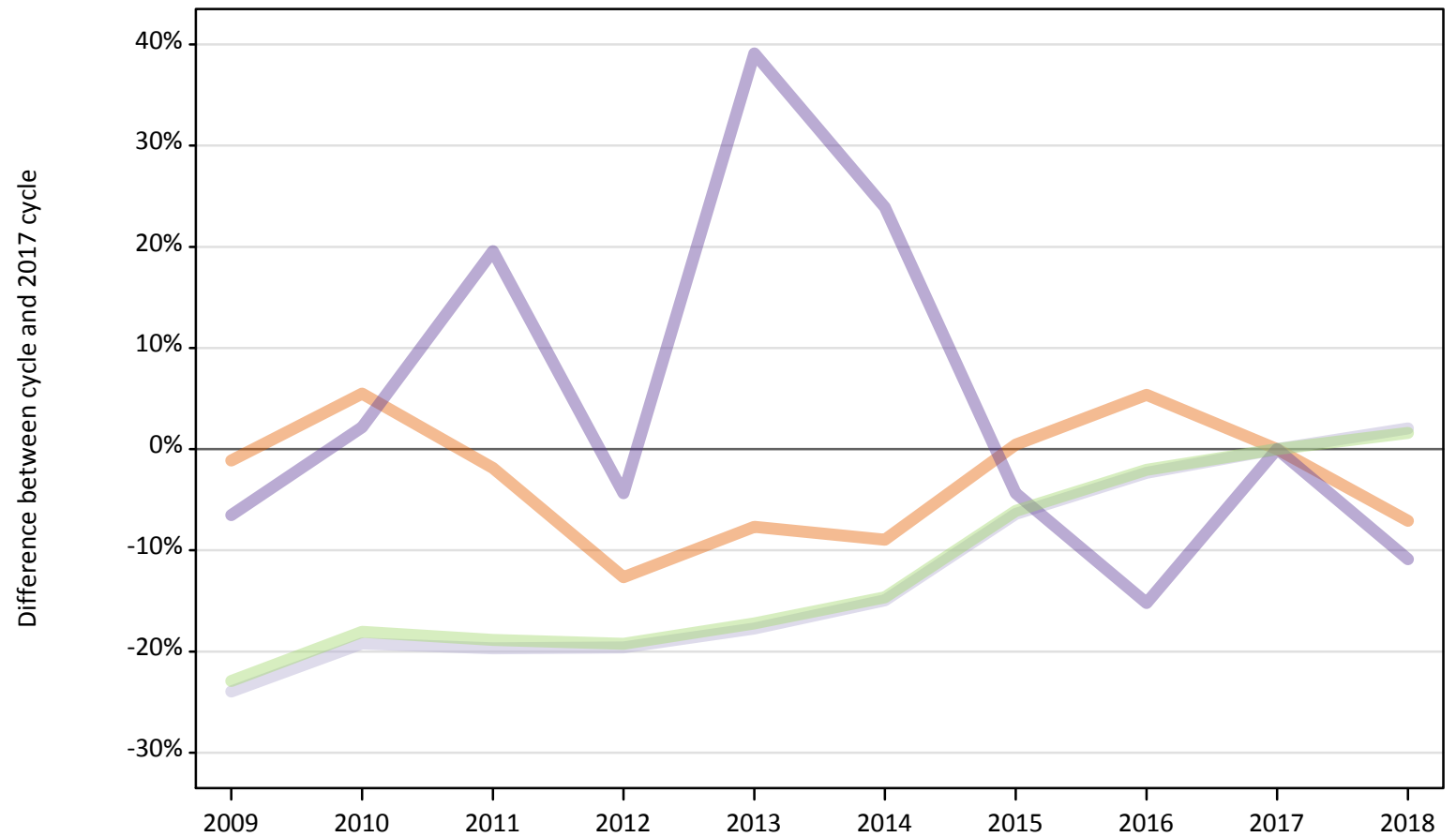
Note: The percentage change is not recorded in the above table for groups with fewer than 10 placed applicants in that cycle or in the 2017 cycle.



### B.25 Placed applicants at 4 days after A level results day: domiciled in Scotland

Selected provider countries: difference between cycle and 2017 cycle (at 4 days after A level results day)

- England
- Northern Ireland
- Scotland
- Wales
- UK



Note: The percentage change is not plotted in the above chart for groups with fewer than 30 placed applicants in any one cycle.

**B.26 Placed applicants at 4 days after A level results day: domiciled in Scotland**

Placed applicants by provider country (at 4 days after A level results day)

Country of provider	2009	2010	2011	2012	2013	2014	2015	2016	2017	2018
England	1,490	1,590	1,480	1,320	1,390	1,380	1,520	1,590	1,510	1,400
Northern Ireland	20	20	20	30	10	20	20	20	30	30
Scotland	24,040	25,540	25,390	25,420	26,010	26,890	29,590	30,870	31,610	32,260
Wales	40	50	60	40	60	60	40	40	50	40
UK	25,590	27,200	26,940	26,810	27,480	28,340	31,170	32,510	33,190	33,730

**B.27 Placed applicants at 4 days after A level results day: domiciled in Scotland**

Selected provider countries: difference between cycle and 2017 cycle (at 4 days after A level results day)

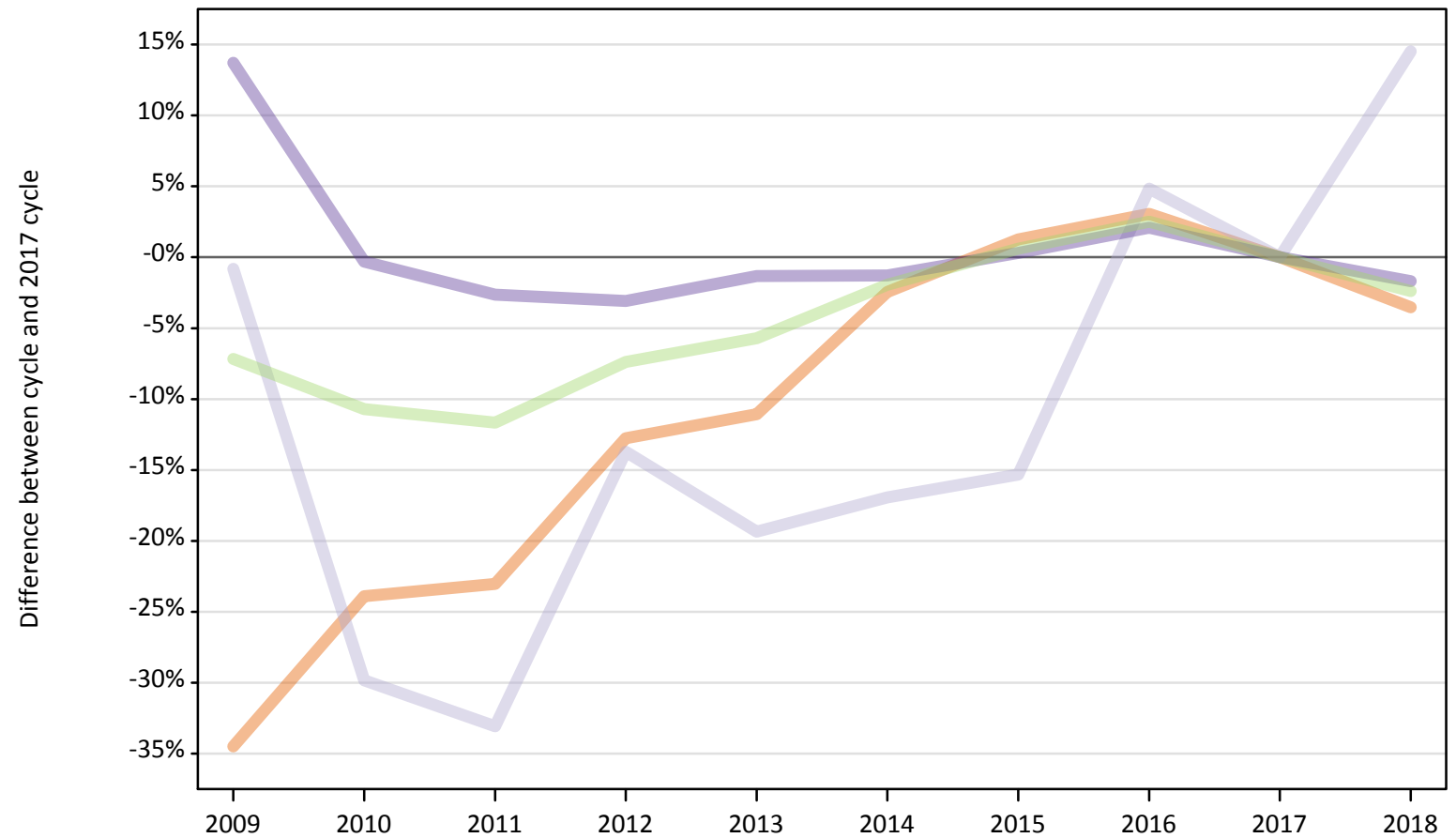
Country of provider	2009	2010	2011	2012	2013	2014	2015	2016	2017	2018
England	-1%	5%	-2%	-13%	-8%	-9%	0%	5%	0%	-7%
Northern Ireland	-41%	-24%	-41%	-7%	-59%	-45%	-41%	-45%	0%	-14%
Scotland	-24%	-19%	-20%	-20%	-18%	-15%	-6%	-2%	0%	2%
Wales	-7%	2%	20%	-4%	39%	24%	-4%	-15%	0%	-11%
UK	-23%	-18%	-19%	-19%	-17%	-15%	-6%	-2%	0%	2%

Note: The percentage change is not recorded in the above table for groups with fewer than 10 placed applicants in that cycle or in the 2017 cycle.

## B.28 Placed applicants at 4 days after A level results day: domiciled in Wales

Selected provider countries: difference between cycle and 2017 cycle (at 4 days after A level results day)

- England
- Northern Ireland
- Scotland
- Wales
- UK



Note: The percentage change is not plotted in the above chart for groups with fewer than 30 placed applicants in any one cycle.

**B.29 Placed applicants at 4 days after A level results day: domiciled in Wales**

Placed applicants by provider country (at 4 days after A level results day)

Country of provider	2009	2010	2011	2012	2013	2014	2015	2016	2017	2018
England	5,060	5,880	5,950	6,740	6,880	7,540	7,830	7,970	7,730	7,460
Northern Ireland	10	10	10	0	0	10	10	10	10	10
Scotland	120	90	80	110	100	100	110	130	120	140
Wales	11,470	10,060	9,820	9,780	9,960	9,960	10,120	10,300	10,090	9,920
UK	16,670	16,040	15,860	16,630	16,930	17,610	18,070	18,410	17,960	17,530

**B.30 Placed applicants at 4 days after A level results day: domiciled in Wales**

Selected provider countries: difference between cycle and 2017 cycle (at 4 days after A level results day)

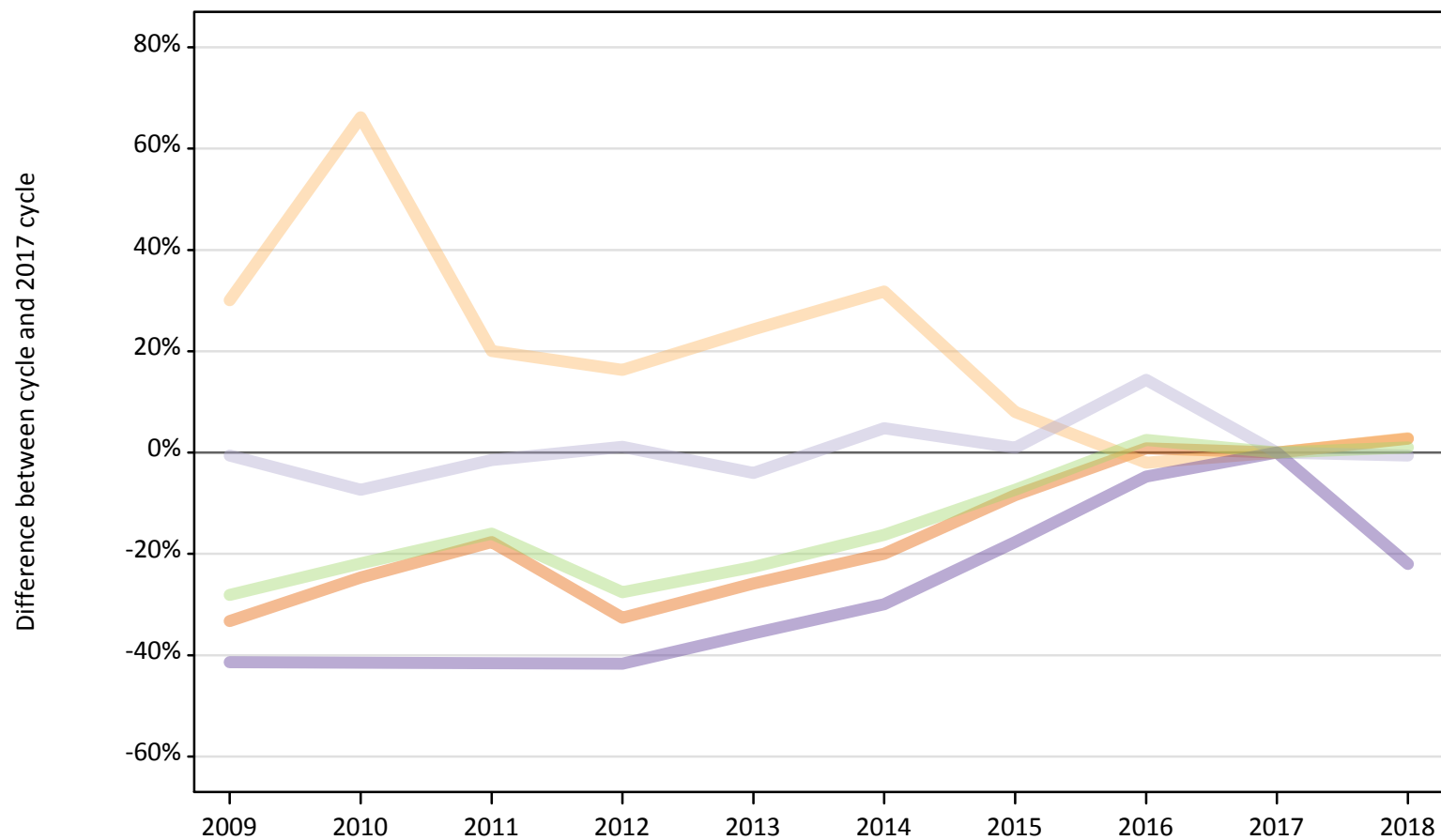
Country of provider	2009	2010	2011	2012	2013	2014	2015	2016	2017	2018
England	-35%	-24%	-23%	-13%	-11%	-2%	1%	3%	0%	-4%
Northern Ireland	-21%	-57%	-50%			-50%	-21%	-36%	0%	-29%
Scotland	-1%	-30%	-33%	-14%	-19%	-17%	-15%	5%	0%	15%
Wales	14%	-0%	-3%	-3%	-1%	-1%	0%	2%	0%	-2%
UK	-7%	-11%	-12%	-7%	-6%	-2%	1%	3%	0%	-2%

Note: The percentage change is not recorded in the above table for groups with fewer than 10 placed applicants in that cycle or in the 2017 cycle.

### B.31 Placed applicants at 4 days after A level results day: domiciled in EU (excluding UK)

Selected provider countries: difference between cycle and 2017 cycle (at 4 days after A level results day)

- England
- Northern Ireland
- Scotland
- Wales
- UK



Note: The percentage change is not plotted in the above chart for groups with fewer than 30 placed applicants in any one cycle.

### B.32 Placed applicants at 4 days after A level results day: domiciled in EU (excluding UK)

Placed applicants by provider country (at 4 days after A level results day)

Country of provider	2009	2010	2011	2012	2013	2014	2015	2016	2017	2018
England	14,620	16,490	18,030	14,750	16,230	17,510	20,040	22,070	21,890	22,480
Northern Ireland	450	580	420	410	430	460	380	340	350	360
Scotland	3,950	3,680	3,920	4,020	3,810	4,170	4,010	4,550	3,970	3,950
Wales	790	790	790	790	870	940	1,110	1,280	1,350	1,050
UK	19,810	21,540	23,150	19,960	21,340	23,080	25,540	28,240	27,560	27,840

### B.33 Placed applicants at 4 days after A level results day: domiciled in EU (excluding UK)

Selected provider countries: difference between cycle and 2017 cycle (at 4 days after A level results day)

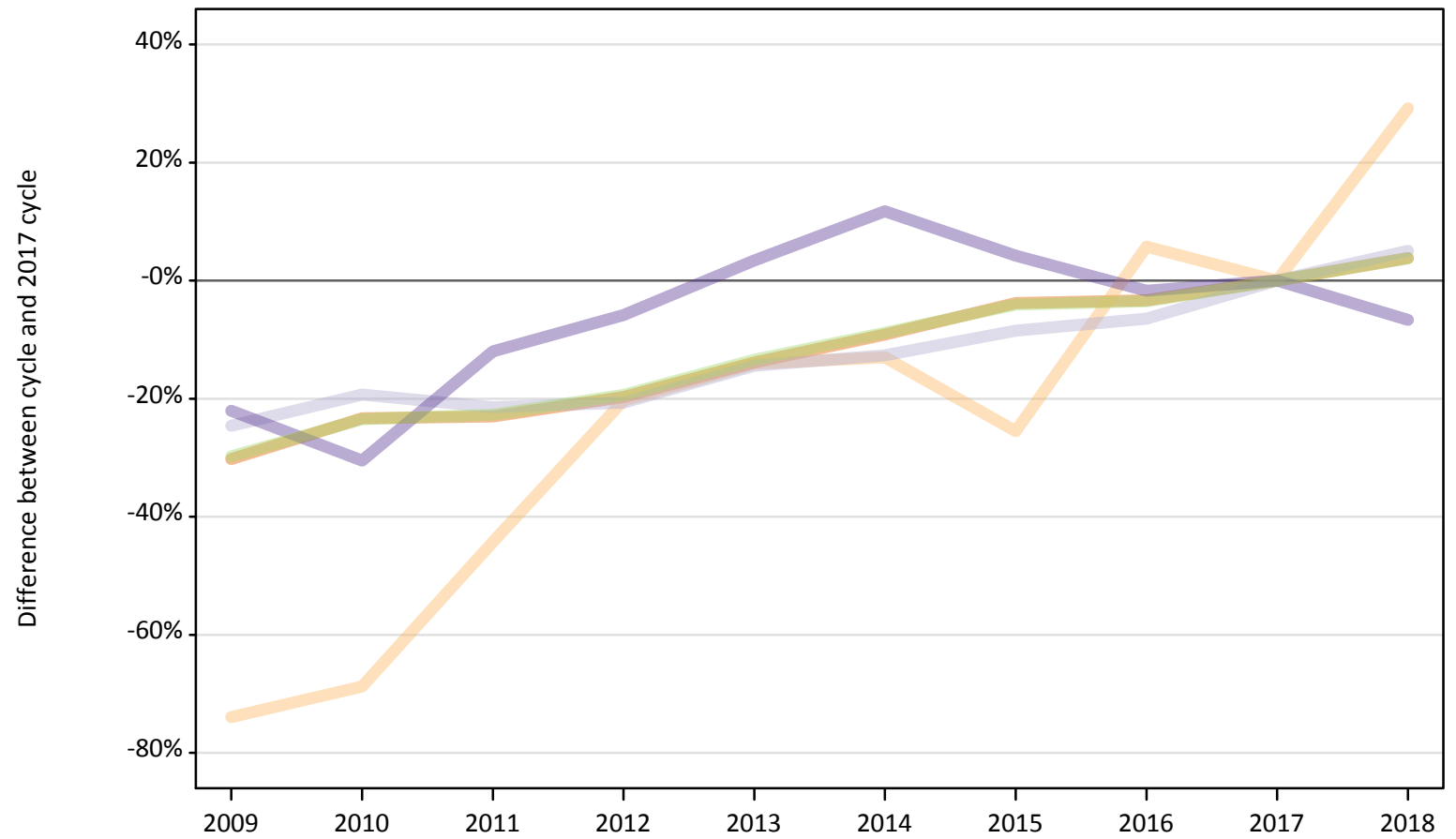
Country of provider	2009	2010	2011	2012	2013	2014	2015	2016	2017	2018
England	-33%	-25%	-18%	-33%	-26%	-20%	-8%	1%	0%	3%
Northern Ireland	30%	66%	20%	16%	24%	32%	8%	-2%	0%	3%
Scotland	-1%	-7%	-1%	1%	-4%	5%	1%	14%	0%	-1%
Wales	-41%	-41%	-42%	-42%	-36%	-30%	-18%	-5%	0%	-22%
UK	-28%	-22%	-16%	-28%	-23%	-16%	-7%	2%	0%	1%

Note: The percentage change is not recorded in the above table for groups with fewer than 10 placed applicants in that cycle or in the 2017 cycle.

### B.34 Placed applicants at 4 days after A level results day: domiciled in Not EU

Selected provider countries: difference between cycle and 2017 cycle (at 4 days after A level results day)

- England
- Northern Ireland
- Scotland
- Wales
- UK



Note: The percentage change is not plotted in the above chart for groups with fewer than 30 placed applicants in any one cycle.

**B.35 Placed applicants at 4 days after A level results day: domiciled in Not EU**

Placed applicants by provider country (at 4 days after A level results day)

Country of provider	2009	2010	2011	2012	2013	2014	2015	2016	2017	2018
England	20,140	22,130	22,210	23,170	24,850	26,220	27,760	27,900	28,860	29,960
Northern Ireland	50	60	110	150	170	170	140	200	190	250
Scotland	2,030	2,170	2,110	2,130	2,300	2,350	2,460	2,520	2,690	2,830
Wales	780	690	880	940	1,030	1,110	1,040	980	990	930
UK	23,000	25,050	25,310	26,390	28,350	29,850	31,400	31,600	32,740	33,970

**B.36 Placed applicants at 4 days after A level results day: domiciled in Not EU**

Selected provider countries: difference between cycle and 2017 cycle (at 4 days after A level results day)

Country of provider	2009	2010	2011	2012	2013	2014	2015	2016	2017	2018
England	-30%	-23%	-23%	-20%	-14%	-9%	-4%	-3%	0%	4%
Northern Ireland	-74%	-69%	-44%	-20%	-14%	-13%	-26%	6%	0%	29%
Scotland	-25%	-19%	-21%	-21%	-14%	-13%	-8%	-6%	0%	5%
Wales	-22%	-30%	-12%	-6%	3%	12%	4%	-2%	0%	-7%
UK	-30%	-23%	-23%	-19%	-13%	-9%	-4%	-3%	0%	4%

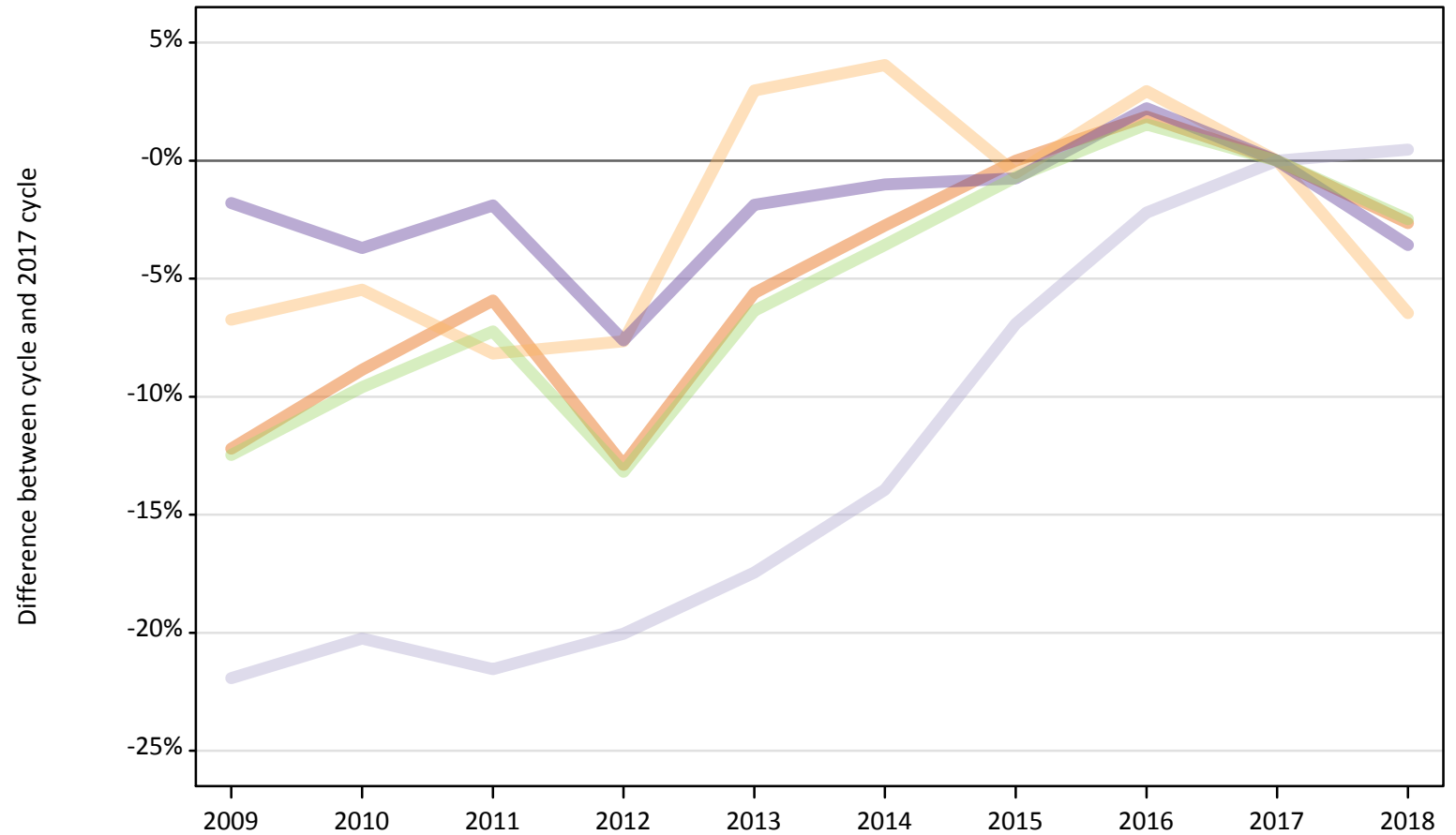
Note: The percentage change is not recorded in the above table for groups with fewer than 10 placed applicants in that cycle or in the 2017 cycle.



### B.37 Placed applicants at 4 days after A level results day: domiciled in UK

Selected provider countries: difference between cycle and 2017 cycle (at 4 days after A level results day)

- England
- Northern Ireland
- Scotland
- Wales
- UK



Note: The percentage change is not plotted in the above chart for groups with fewer than 30 placed applicants in any one cycle.

**B.38 Placed applicants at 4 days after A level results day: domiciled in UK**

Placed applicants by provider country (at 4 days after A level results day)

Country of provider	2009	2010	2011	2012	2013	2014	2015	2016	2017	2018
England	294,290	305,490	315,310	292,000	316,380	325,960	335,180	341,460	335,190	326,310
Northern Ireland	7,750	7,850	7,630	7,670	8,550	8,640	8,260	8,550	8,310	7,770
Scotland	29,450	30,080	29,590	30,160	31,140	32,460	35,110	36,890	37,720	37,900
Wales	19,980	19,600	19,960	18,800	19,970	20,150	20,200	20,800	20,350	19,620
UK	351,470	363,020	372,490	348,630	376,040	387,200	398,750	407,700	401,560	391,600

**B.39 Placed applicants at 4 days after A level results day: domiciled in UK**

Selected provider countries: difference between cycle and 2017 cycle (at 4 days after A level results day)

Country of provider	2009	2010	2011	2012	2013	2014	2015	2016	2017	2018
England	-12%	-9%	-6%	-13%	-6%	-3%	-0%	2%	0%	-3%
Northern Ireland	-7%	-5%	-8%	-8%	3%	4%	-1%	3%	0%	-6%
Scotland	-22%	-20%	-22%	-20%	-17%	-14%	-7%	-2%	0%	0%
Wales	-2%	-4%	-2%	-8%	-2%	-1%	-1%	2%	0%	-4%
UK	-12%	-10%	-7%	-13%	-6%	-4%	-1%	2%	0%	-2%

Note: The percentage change is not recorded in the above table for groups with fewer than 10 placed applicants in that cycle or in the 2017 cycle.