

Daily Clearing Analysis: Country

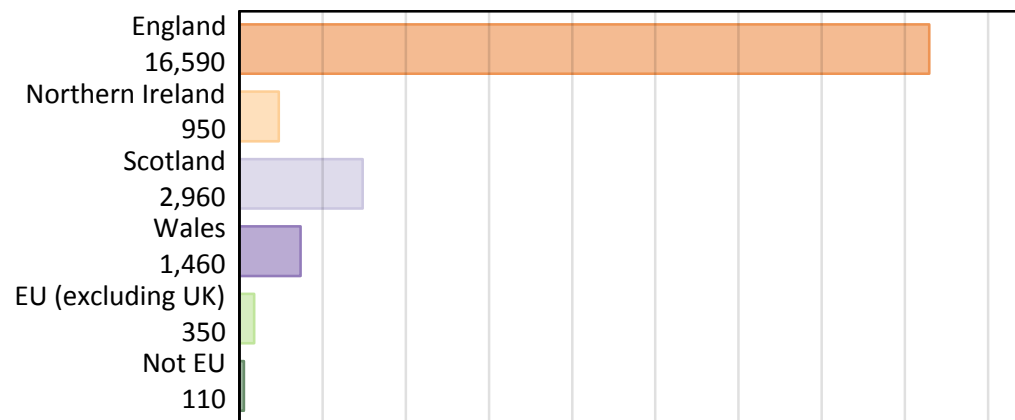
B7 Nursing analysis at 00:05 on Monday 20 August 2018 (4 days after A level results day)

BB.1 Placed applicants to nursing by country of provider and domicile, 2018 cycle

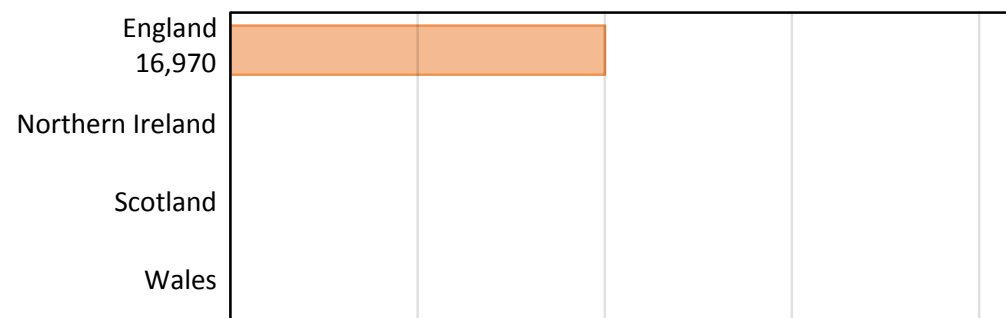
Domicile of applicant	Country of provider				
	England	Northern Ireland	Scotland	Wales	UK
England	16,280				16,590
Northern Ireland	170				950
Scotland	20				2,960
Wales	280				1,460
EU (excluding UK)	130				350
Not EU	90				110
All	16,970				22,410

Note that figures for providers in Northern Ireland, Scotland, and Wales are not reported here.

BB.2 Placed applicants to nursing by domicile group



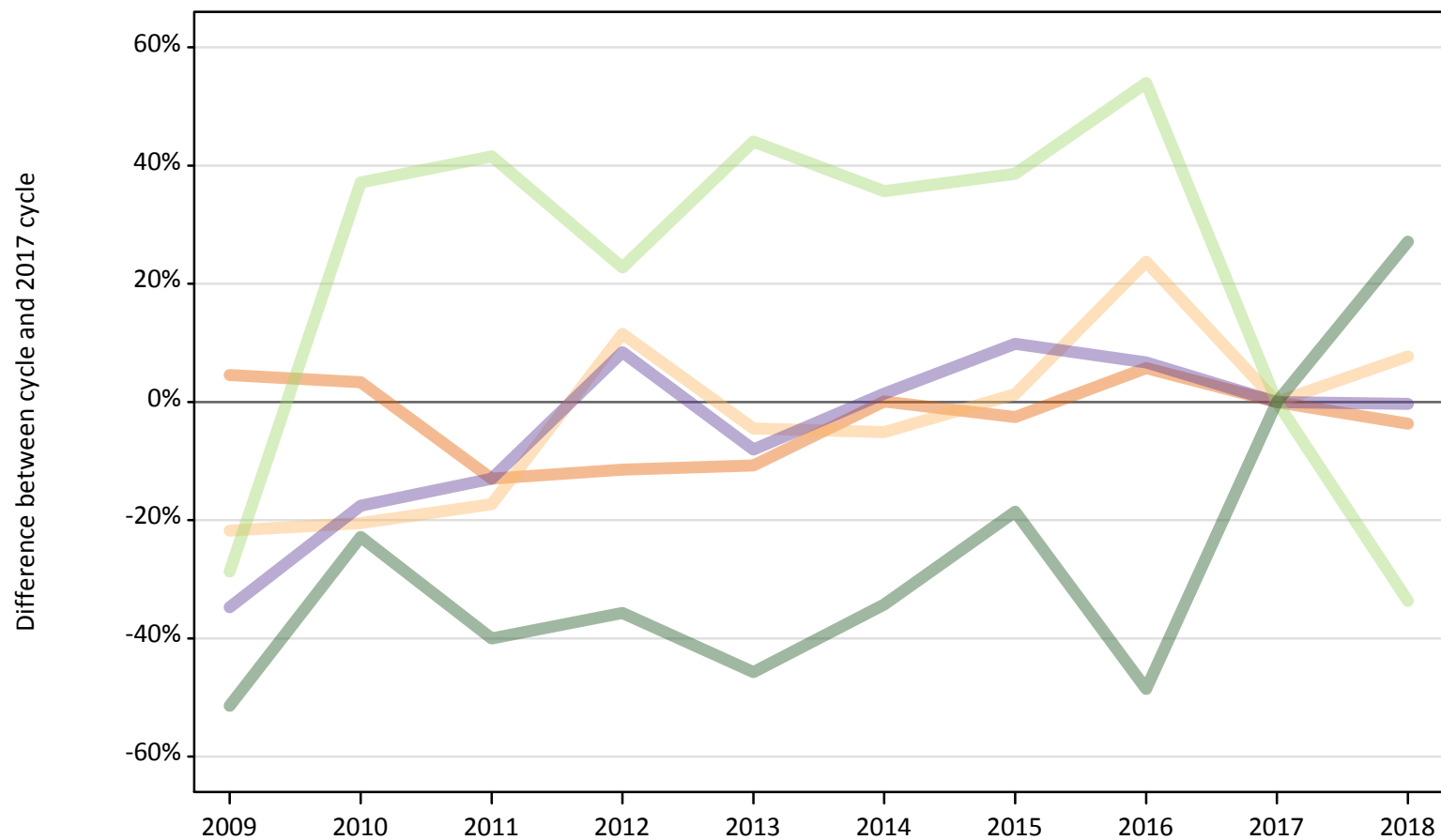
BB.3 Placed applicants to nursing by country of provider



Note that figures for providers in Northern Ireland, Scotland, and Wales are not reported here.

BB.4 Placed applicants to nursing at 4 days after A level results day: providers in England
 Selected applicant domiciles: difference between cycle and 2017 cycle (at 4 days after A level results day)

- England
- Northern Ireland
- Scotland
- Wales
- EU (excluding UK)
- Not EU



Note: The percentage change is not plotted in the above chart for groups with fewer than 30 placed applicants in any one cycle.

BB.5 Placed applicants to nursing at 4 days after A level results day: providers in England

Placed applicants to nursing by domicile (at 4 days after A level results day)

Domicile of applicant	2009	2010	2011	2012	2013	2014	2015	2016	2017	2018
England	17,670	17,470	14,710	14,970	15,090	16,920	16,480	17,870	16,910	16,280
Northern Ireland	120	120	130	170	150	150	160	190	160	170
Scotland	40	30	30	40	20	40	30	30	20	20
Wales	190	240	250	310	260	290	310	300	290	280
EU (excluding UK)	140	280	290	250	290	270	280	310	200	130
Not EU	30	50	40	50	40	50	60	40	70	90

BB.6 Placed applicants to nursing at 4 days after A level results day: providers in England

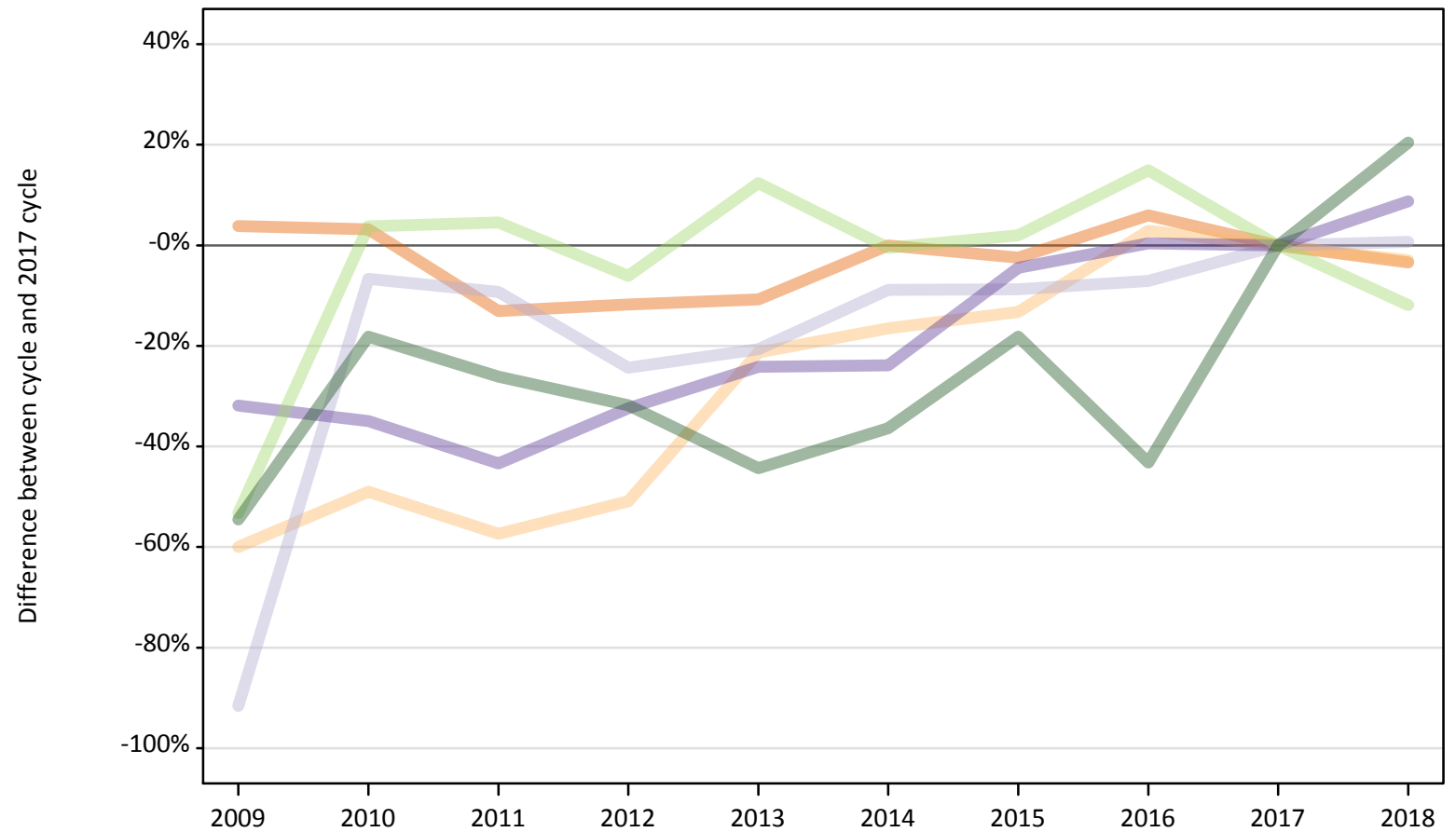
Selected applicant domiciles: difference between cycle and 2017 cycle (at 4 days after A level results day)

Domicile of applicant	2009	2010	2011	2012	2013	2014	2015	2016	2017	2018
England	5%	3%	-13%	-11%	-11%	0%	-3%	6%	0%	-4%
Northern Ireland	-22%	-21%	-17%	12%	-4%	-5%	1%	24%	0%	8%
Scotland	90%	52%	38%	90%	0%	76%	24%	29%	0%	-29%
Wales	-35%	-18%	-13%	8%	-8%	1%	10%	7%	0%	-0%
EU (excluding UK)	-29%	37%	42%	23%	44%	36%	39%	54%	0%	-34%
Not EU	-51%	-23%	-40%	-36%	-46%	-34%	-19%	-49%	0%	27%

Note: The percentage change is not recorded in the above table for groups with fewer than 10 placed applicants in that cycle or in the 2017 cycle.

BB.7 Placed applicants to nursing at 4 days after A level results day: providers in the UK
 Selected applicant domiciles: difference between cycle and 2017 cycle (at 4 days after A level results day)

- England
- Northern Ireland
- Scotland
- Wales
- EU (excluding UK)
- Not EU



Note: The percentage change is not plotted in the above chart for groups with fewer than 30 placed applicants in any one cycle.

BB.8 Placed applicants to nursing at 4 days after A level results day: providers in the UK

Placed applicants to nursing by domicile (at 4 days after A level results day)

Domicile of applicant	2009	2010	2011	2012	2013	2014	2015	2016	2017	2018
England	17,840	17,730	14,940	15,150	15,330	17,170	16,750	18,200	17,170	16,590
Northern Ireland	390	500	420	480	770	810	850	1,000	980	950
Scotland	250	2,740	2,660	2,220	2,330	2,680	2,680	2,730	2,940	2,960
Wales	920	880	760	910	1,020	1,030	1,290	1,350	1,350	1,460
EU (excluding UK)	190	410	410	370	450	390	400	460	400	350
Not EU	40	70	70	60	50	60	70	50	90	110

BB.9 Placed applicants to nursing at 4 days after A level results day: providers in the UK

Selected applicant domiciles: difference between cycle and 2017 cycle (at 4 days after A level results day)

Domicile of applicant	2009	2010	2011	2012	2013	2014	2015	2016	2017	2018
England	4%	3%	-13%	-12%	-11%	-0%	-2%	6%	0%	-3%
Northern Ireland	-60%	-49%	-57%	-51%	-21%	-17%	-13%	3%	0%	-3%
Scotland	-92%	-7%	-9%	-24%	-21%	-9%	-9%	-7%	0%	1%
Wales	-32%	-35%	-43%	-32%	-24%	-24%	-4%	0%	0%	9%
EU (excluding UK)	-53%	4%	5%	-6%	12%	-1%	2%	15%	0%	-12%
Not EU	-55%	-18%	-26%	-32%	-44%	-36%	-18%	-43%	0%	20%

Note: The percentage change is not recorded in the above table for groups with fewer than 10 placed applicants in that cycle or in the 2017 cycle.