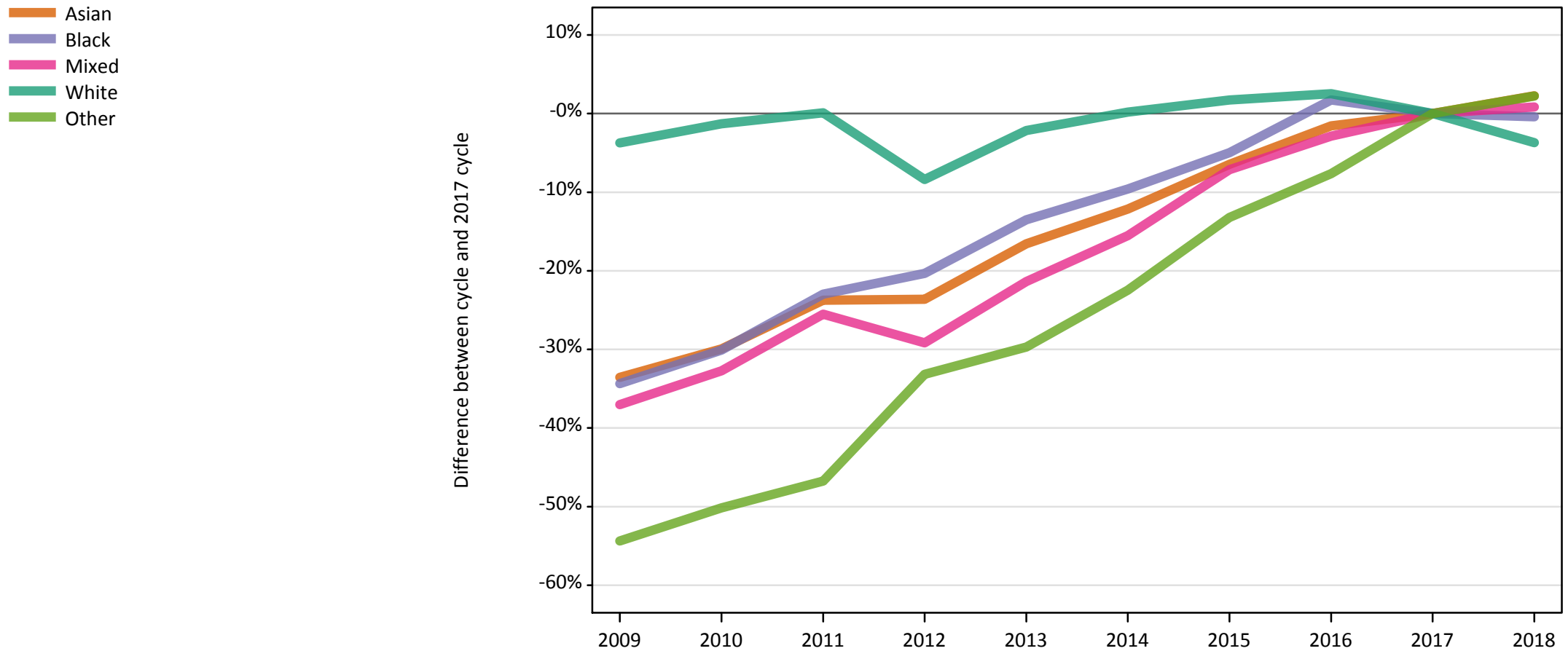


Daily Clearing Analysis: Ethnicity

Analysis at 00:05 on Tuesday 21 August 2018 (5 days after A level results day)

E.1 Placed applicants from UK by ethnic group: 5 days after A level results day

Placed applicants: change relative to 2017 cycle totals



Note: The percentage change is not plotted in the above chart for groups with fewer than 30 placed applicants in any one cycle.

E.2 Placed applicants from UK by ethnic group: 5 days after A level results day

Applicant Status	Ethnic group	2009	2010	2011	2012	2013	2014	2015	2016	2017	2018
Placed	Asian	31,080	32,770	35,670	35,730	39,030	41,100	43,760	46,040	46,770	47,840
	Black	18,130	19,310	21,270	22,010	23,890	24,960	26,250	28,100	27,620	27,500
	Mixed	11,320	12,100	13,390	12,740	14,140	15,190	16,700	17,470	17,980	18,130
	White	293,560	300,980	305,200	279,350	298,390	305,530	310,190	312,670	304,930	293,630
	Other	3,060	3,340	3,570	4,480	4,710	5,200	5,820	6,190	6,700	6,850

E.3 Placed applicants from UK by ethnic group: 5 days after A level results day

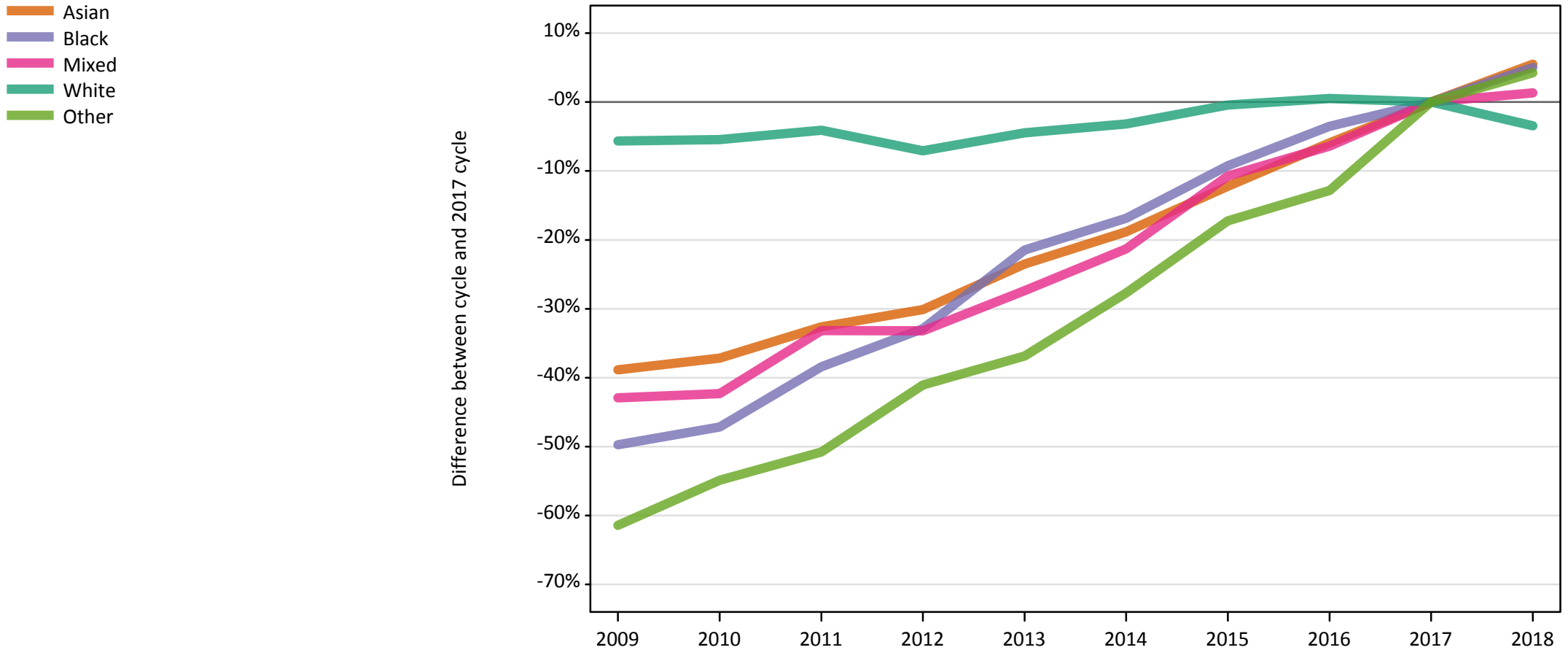
Placed applicants: change relative to 2017 cycle totals

Applicant Status	Ethnic group	2009	2010	2011	2012	2013	2014	2015	2016	2017	2018
Placed	Asian	-34%	-30%	-24%	-24%	-17%	-12%	-6%	-2%	0%	2%
	Black	-34%	-30%	-23%	-20%	-14%	-10%	-5%	2%	0%	-0%
	Mixed	-37%	-33%	-26%	-29%	-21%	-16%	-7%	-3%	0%	1%
	White	-4%	-1%	0%	-8%	-2%	0%	2%	3%	0%	-4%
	Other	-54%	-50%	-47%	-33%	-30%	-22%	-13%	-8%	0%	2%

Note: The percentage change is not recorded in the above table for groups with fewer than 10 placed applicants in that cycle or in the 2017 cycle.

E.4 Placed 18 year old applicants from UK by ethnic group: 5 days after A level results day

Placed 18 year old applicants: change relative to 2017 cycle totals



Note: The percentage change is not plotted in the above chart for groups with fewer than 30 placed applicants in any one cycle.

E.5 Placed 18 year old applicants from UK by ethnic group: 5 days after A level results day

Applicant Status	Ethnic group	2009	2010	2011	2012	2013	2014	2015	2016	2017	2018
Placed	Asian	16,830	17,300	18,550	19,240	21,060	22,350	24,170	25,910	27,530	29,050
	Black	5,740	6,030	7,030	7,660	8,970	9,490	10,360	11,020	11,420	11,990
	Mixed	5,800	5,870	6,800	6,790	7,380	8,000	9,080	9,520	10,170	10,300
	White	168,740	169,080	171,530	166,180	170,870	173,190	178,050	179,770	178,840	172,670
	Other	1,300	1,520	1,650	1,980	2,120	2,430	2,780	2,930	3,360	3,510

E.6 Placed 18 year old applicants from UK by ethnic group: 5 days after A level results day

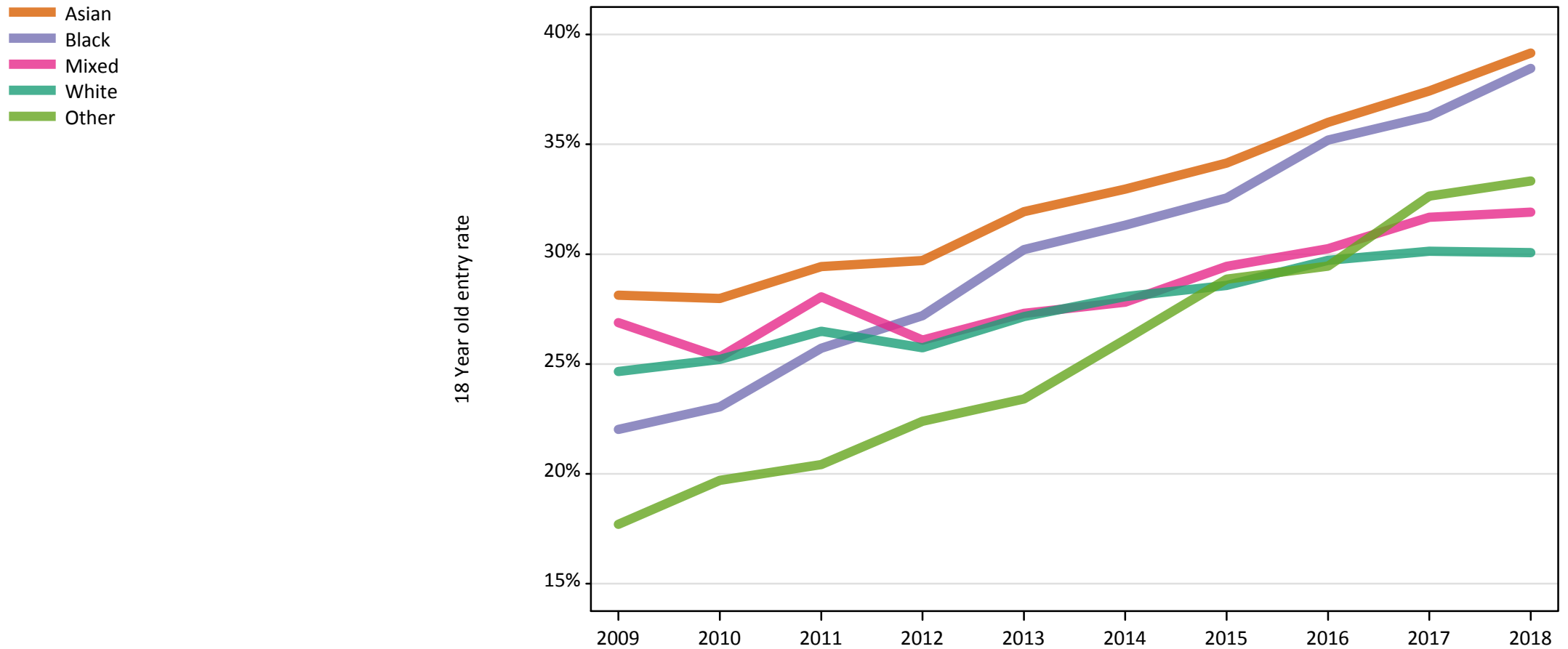
Placed 18 year old applicants: change relative to 2017 cycle totals

Applicant Status	Ethnic group	2009	2010	2011	2012	2013	2014	2015	2016	2017	2018
Placed	Asian	-39%	-37%	-33%	-30%	-24%	-19%	-12%	-6%	0%	5%
	Black	-50%	-47%	-38%	-33%	-21%	-17%	-9%	-4%	0%	5%
	Mixed	-43%	-42%	-33%	-33%	-27%	-21%	-11%	-6%	0%	1%
	White	-6%	-5%	-4%	-7%	-4%	-3%	-0%	1%	0%	-3%
	Other	-61%	-55%	-51%	-41%	-37%	-28%	-17%	-13%	0%	4%

Note: The percentage change is not recorded in the above table for groups with fewer than 10 placed applicants in that cycle or in the 2017 cycle.

E.7 Placed 18 year old applicants from UK by ethnic group: 5 days after A level results day

Placed 18 year old applicants: entry rate



E.8 Placed 18 year old applicants from UK by ethnic group: 5 days after A level results day

Placed 18 year old applicants: entry rate

Applicant Status	Ethnic group	2009	2010	2011	2012	2013	2014	2015	2016	2017	2018
Placed	Asian	28.1%	28.0%	29.4%	29.7%	31.9%	33.0%	34.1%	36.0%	37.4%	39.2%
	Black	22.0%	23.0%	25.7%	27.2%	30.2%	31.3%	32.6%	35.2%	36.3%	38.5%
	Mixed	26.9%	25.3%	28.1%	26.1%	27.3%	27.8%	29.4%	30.3%	31.7%	31.9%
	White	24.7%	25.2%	26.5%	25.7%	27.2%	28.1%	28.6%	29.7%	30.1%	30.1%
	Other	17.7%	19.7%	20.4%	22.4%	23.4%	26.1%	28.9%	29.5%	32.6%	33.3%

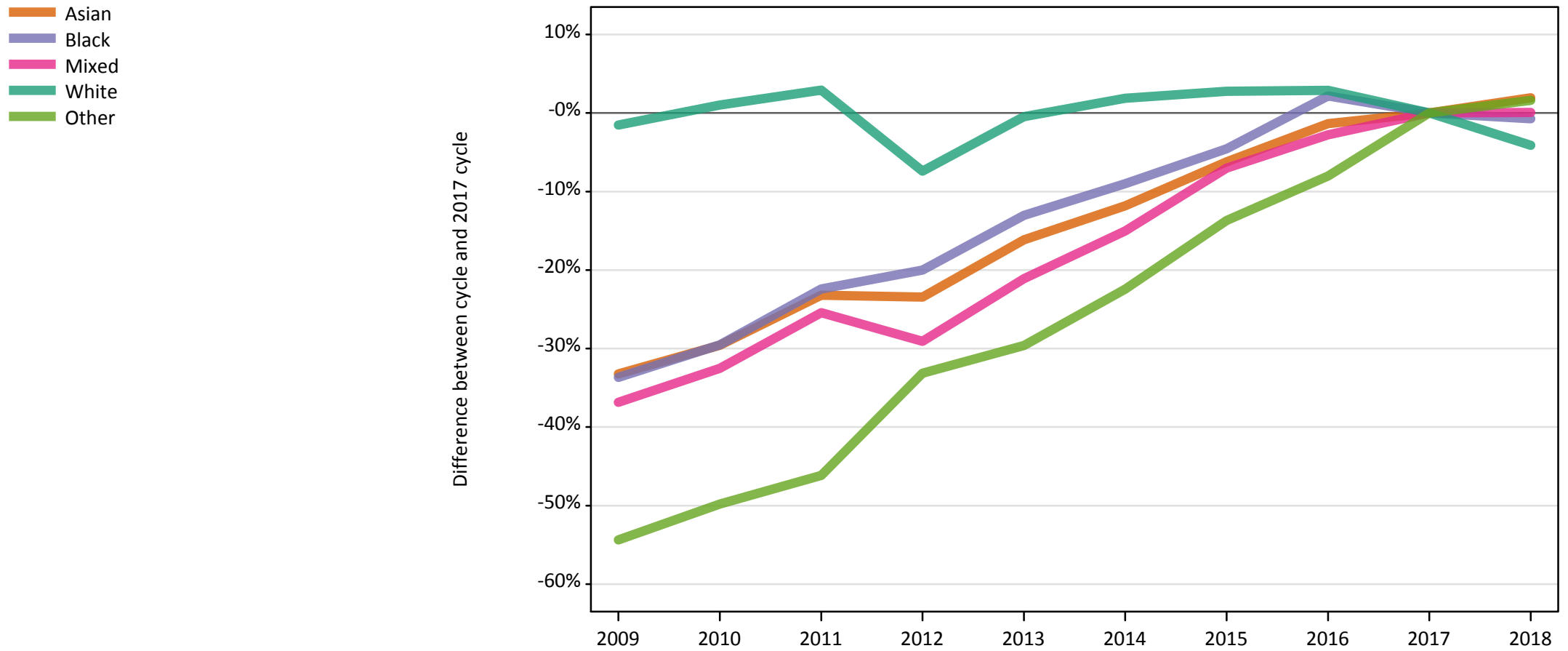
E.9 Placed 18 year old applicants from UK by ethnic group: 5 days after A level results day

Placed 18 year old applicants: entry rate (indexed to 100 = White ethnic group)

Applicant Status	Ethnic group	2009	2010	2011	2012	2013	2014	2015	2016	2017	2018
Placed	Asian	114	111	111	115	118	117	119	121	124	130
	Black	89	91	97	106	111	112	114	118	120	128
	Mixed	109	100	106	101	101	99	103	102	105	106
	White	100	100	100	100	100	100	100	100	100	100
	Other	72	78	77	87	86	93	101	99	108	111

E.10 Placed applicants from England by ethnic group: 5 days after A level results day

Placed applicants: change relative to 2017 cycle totals



Note: The percentage change is not plotted in the above chart for groups with fewer than 30 placed applicants in any one cycle.

E.11 Placed applicants from England by ethnic group: 5 days after A level results day

Applicant Status	Ethnic group	2009	2010	2011	2012	2013	2014	2015	2016	2017	2018
Placed	Asian	29,660	31,280	34,110	34,000	37,240	39,170	41,660	43,820	44,420	45,280
	Black	17,790	18,900	20,810	21,450	23,320	24,400	25,590	27,400	26,810	26,620
	Mixed	10,610	11,350	12,530	11,920	13,260	14,280	15,630	16,340	16,810	16,820
	White	241,650	247,970	252,640	227,290	244,270	250,030	252,240	252,530	245,440	235,320
	Other	2,910	3,210	3,440	4,270	4,500	4,950	5,510	5,870	6,390	6,490

E.12 Placed applicants from England by ethnic group: 5 days after A level results day

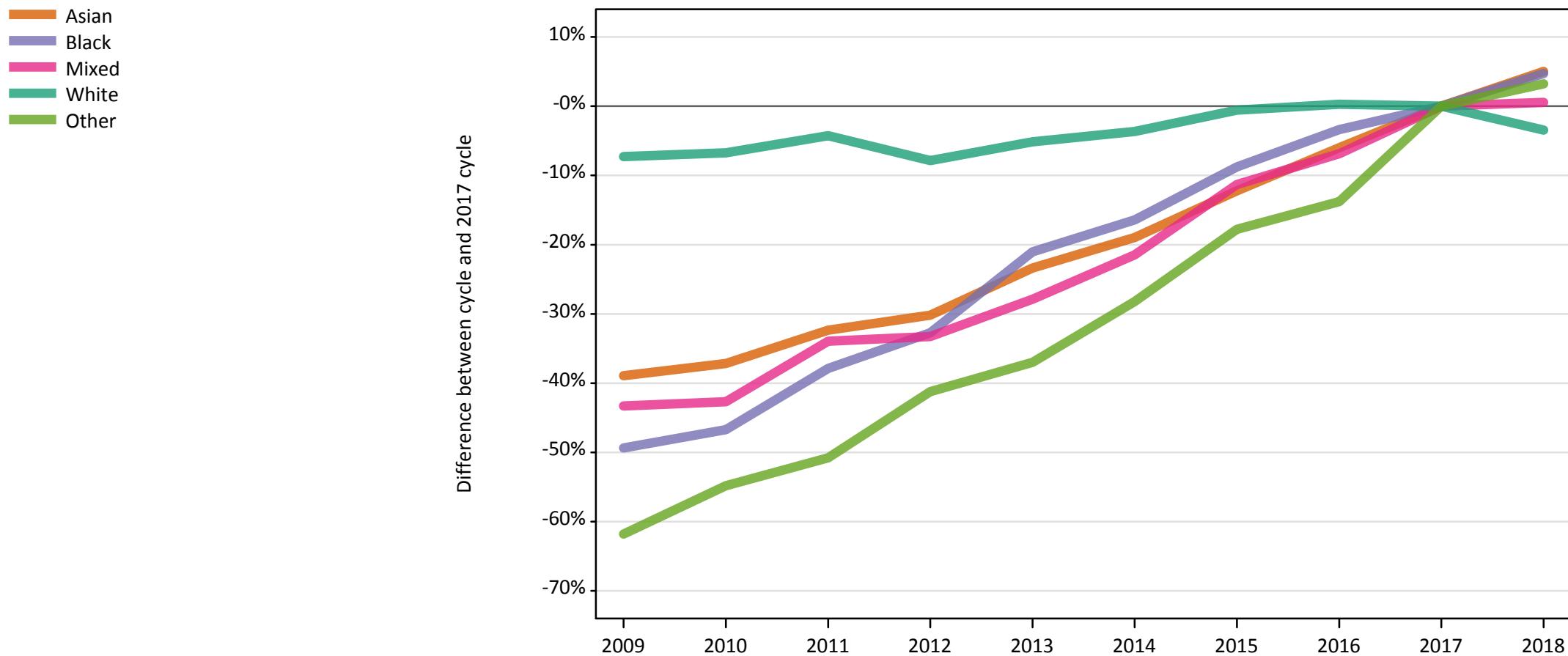
Placed applicants: change relative to 2017 cycle totals

Applicant Status	Ethnic group	2009	2010	2011	2012	2013	2014	2015	2016	2017	2018
Placed	Asian	-33%	-30%	-23%	-23%	-16%	-12%	-6%	-1%	0%	2%
	Black	-34%	-30%	-22%	-20%	-13%	-9%	-5%	2%	0%	-1%
	Mixed	-37%	-33%	-25%	-29%	-21%	-15%	-7%	-3%	0%	0%
	White	-2%	1%	3%	-7%	-0%	2%	3%	3%	0%	-4%
	Other	-54%	-50%	-46%	-33%	-30%	-22%	-14%	-8%	0%	2%

Note: The percentage change is not recorded in the above table for groups with fewer than 10 placed applicants in that cycle or in the 2017 cycle.

E.13 Placed 18 year old applicants from England by ethnic group: 5 days after A level results day

Placed 18 year old applicants: change relative to 2017 cycle totals



Note: The percentage change is not plotted in the above chart for groups with fewer than 30 placed applicants in any one cycle.

E.14 Placed 18 year old applicants from England by ethnic group: 5 days after A level results day

Applicant Status	Ethnic group	2009	2010	2011	2012	2013	2014	2015	2016	2017	2018
Placed	Asian	16,110	16,570	17,840	18,410	20,210	21,370	23,150	24,800	26,370	27,700
	Black	5,660	5,960	6,950	7,520	8,830	9,350	10,200	10,800	11,180	11,710
	Mixed	5,450	5,500	6,340	6,410	6,920	7,540	8,520	8,940	9,600	9,650
	White	137,760	138,540	142,200	136,900	140,910	143,120	147,720	148,980	148,540	143,450
	Other	1,240	1,460	1,590	1,900	2,040	2,320	2,660	2,790	3,240	3,340

E.15 Placed 18 year old applicants from England by ethnic group: 5 days after A level results day

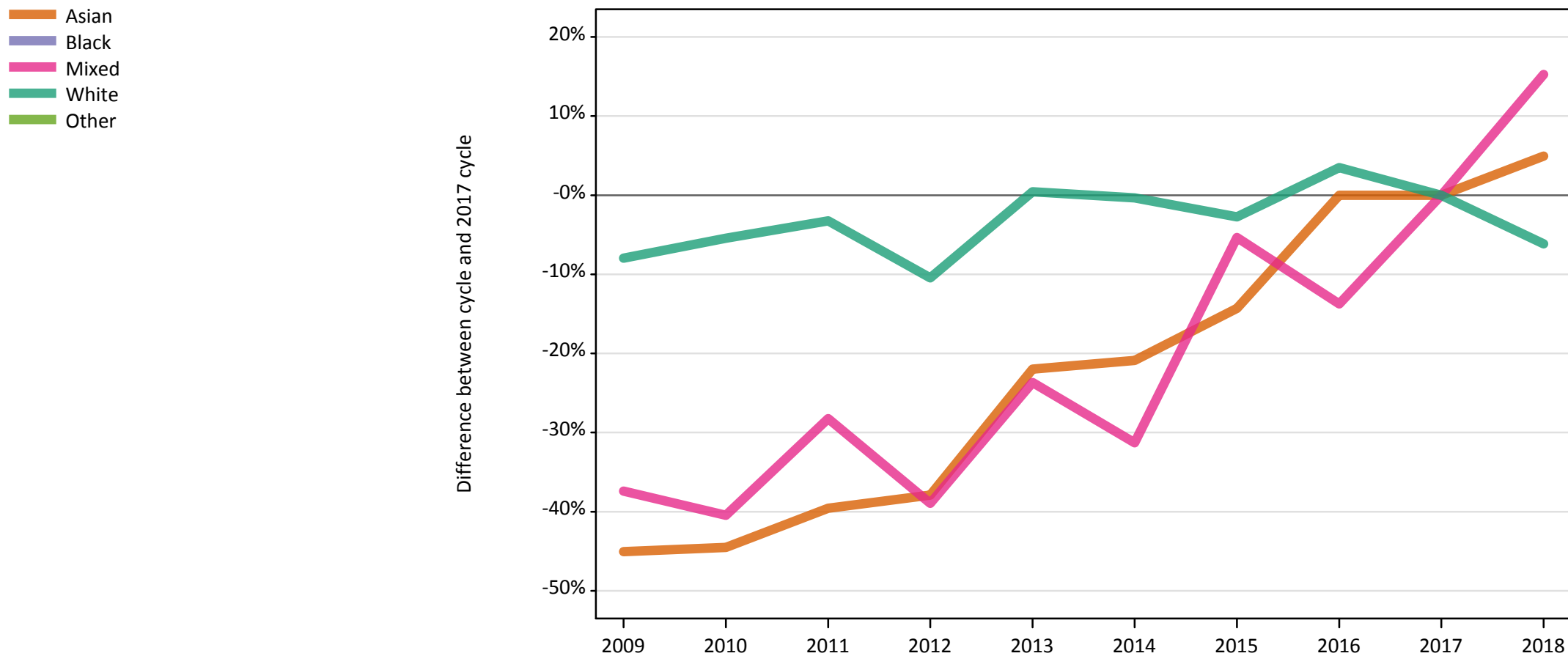
Placed 18 year old applicants: change relative to 2017 cycle totals

Applicant Status	Ethnic group	2009	2010	2011	2012	2013	2014	2015	2016	2017	2018
Placed	Asian	-39%	-37%	-32%	-30%	-23%	-19%	-12%	-6%	0%	5%
	Black	-49%	-47%	-38%	-33%	-21%	-16%	-9%	-3%	0%	5%
	Mixed	-43%	-43%	-34%	-33%	-28%	-21%	-11%	-7%	0%	1%
	White	-7%	-7%	-4%	-8%	-5%	-4%	-1%	0%	0%	-3%
	Other	-62%	-55%	-51%	-41%	-37%	-28%	-18%	-14%	0%	3%

Note: The percentage change is not recorded in the above table for groups with fewer than 10 placed applicants in that cycle or in the 2017 cycle.

E.16 Placed applicants from Northern Ireland by ethnic group: 5 days after A level results day

Placed applicants: change relative to 2017 cycle totals



Note: The percentage change is not plotted in the above chart for groups with fewer than 30 placed applicants in any one cycle.

E.17 Placed applicants from Northern Ireland by ethnic group: 5 days after A level results day

Applicant Status	Ethnic group	2009	2010	2011	2012	2013	2014	2015	2016	2017	2018
Placed	Asian	100	100	110	110	140	140	160	180	180	190
	Black	10	20	10	20	30	40	30	50	50	50
	Mixed	80	80	90	80	100	90	120	110	130	150
	White	11,640	11,960	12,230	11,320	12,700	12,600	12,300	13,090	12,640	11,870
	Other	10	20	10	10	10	20	10	20	20	20

E.18 Placed applicants from Northern Ireland by ethnic group: 5 days after A level results day

Placed applicants: change relative to 2017 cycle totals

Applicant Status	Ethnic group	2009	2010	2011	2012	2013	2014	2015	2016	2017	2018
Placed	Asian	-45%	-45%	-40%	-38%	-22%	-21%	-14%	0%	0%	5%
	Black	-73%	-65%	-71%	-51%	-39%	-20%	-33%	6%	0%	-2%
	Mixed	-37%	-40%	-28%	-39%	-24%	-31%	-5%	-14%	0%	15%
	White	-8%	-5%	-3%	-10%	0%	-0%	-3%	4%	0%	-6%
	Other	-65%	-30%	-70%	-39%	-57%	-17%	-48%	-22%	0%	-13%

Note: The percentage change is not recorded in the above table for groups with fewer than 10 placed applicants in that cycle or in the 2017 cycle.

E.19 Placed 18 year old applicants from Northern Ireland by ethnic group: 5 days after A level results day

Placed 18 year old applicants: change relative to 2017 cycle totals



Note: The percentage change is not plotted in the above chart for groups with fewer than 30 placed applicants in any one cycle.

E.20 Placed 18 year old applicants from Northern Ireland by ethnic group: 5 days after A level results day

Applicant Status	Ethnic group	2009	2010	2011	2012	2013	2014	2015	2016	2017	2018
Placed	Asian	60	60	60	60	70	80	90	100	110	120
	Black	10	0	10	10	20	10	10	20	20	10
	Mixed	50	40	60	40	60	50	80	70	80	90
	White	8,170	7,890	7,780	7,330	7,990	7,690	7,570	7,780	7,670	7,100
	Other	0	10	0	10	0	10	0	10	10	10

E.21 Placed 18 year old applicants from Northern Ireland by ethnic group: 5 days after A level results day

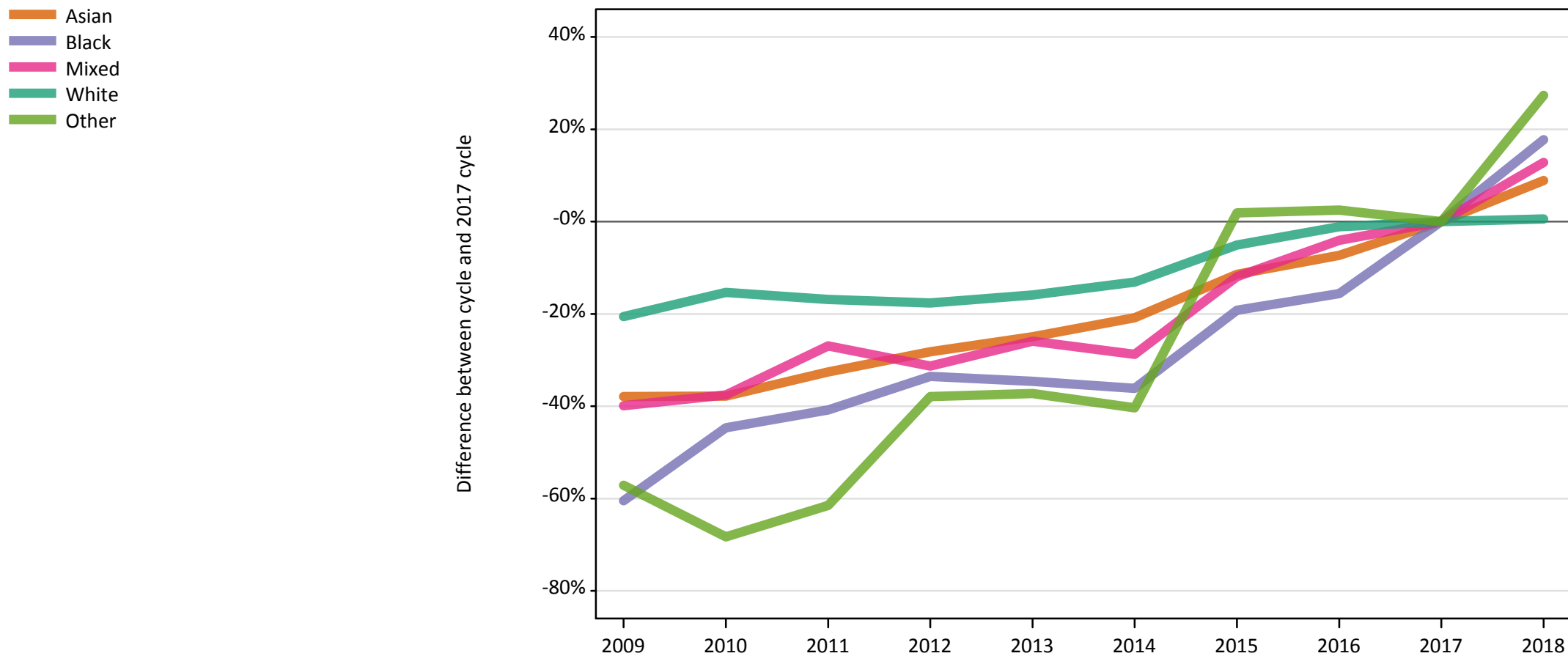
Placed 18 year old applicants: change relative to 2017 cycle totals

Applicant Status	Ethnic group	2009	2010	2011	2012	2013	2014	2015	2016	2017	2018
Placed	Asian	-46%	-47%	-48%	-48%	-33%	-29%	-22%	-11%	0%	5%
	Black	-60%		-53%	-47%	0%	-20%	-20%	20%	0%	-27%
	Mixed	-32%	-43%	-23%	-43%	-21%	-28%	0%	-5%	0%	24%
	White	7%	3%	1%	-4%	4%	0%	-1%	1%	0%	-7%
	Other		-30%		-50%		0%		-10%	0%	10%

Note: The percentage change is not recorded in the above table for groups with fewer than 10 placed applicants in that cycle or in the 2017 cycle.

E.22 Placed applicants from Scotland by ethnic group: 5 days after A level results day

Placed applicants: change relative to 2017 cycle totals



Note: The percentage change is not plotted in the above chart for groups with fewer than 30 placed applicants in any one cycle.

E.23 Placed applicants from Scotland by ethnic group: 5 days after A level results day

Applicant Status	Ethnic group	2009	2010	2011	2012	2013	2014	2015	2016	2017	2018
Placed	Asian	900	900	980	1,040	1,090	1,150	1,280	1,340	1,450	1,580
	Black	190	260	280	310	310	300	380	400	470	550
	Mixed	360	370	430	410	440	420	520	570	590	670
	White	24,160	25,760	25,280	25,060	25,580	26,430	28,870	30,080	30,420	30,600
	Other	70	50	60	100	100	100	160	170	160	210

E.24 Placed applicants from Scotland by ethnic group: 5 days after A level results day

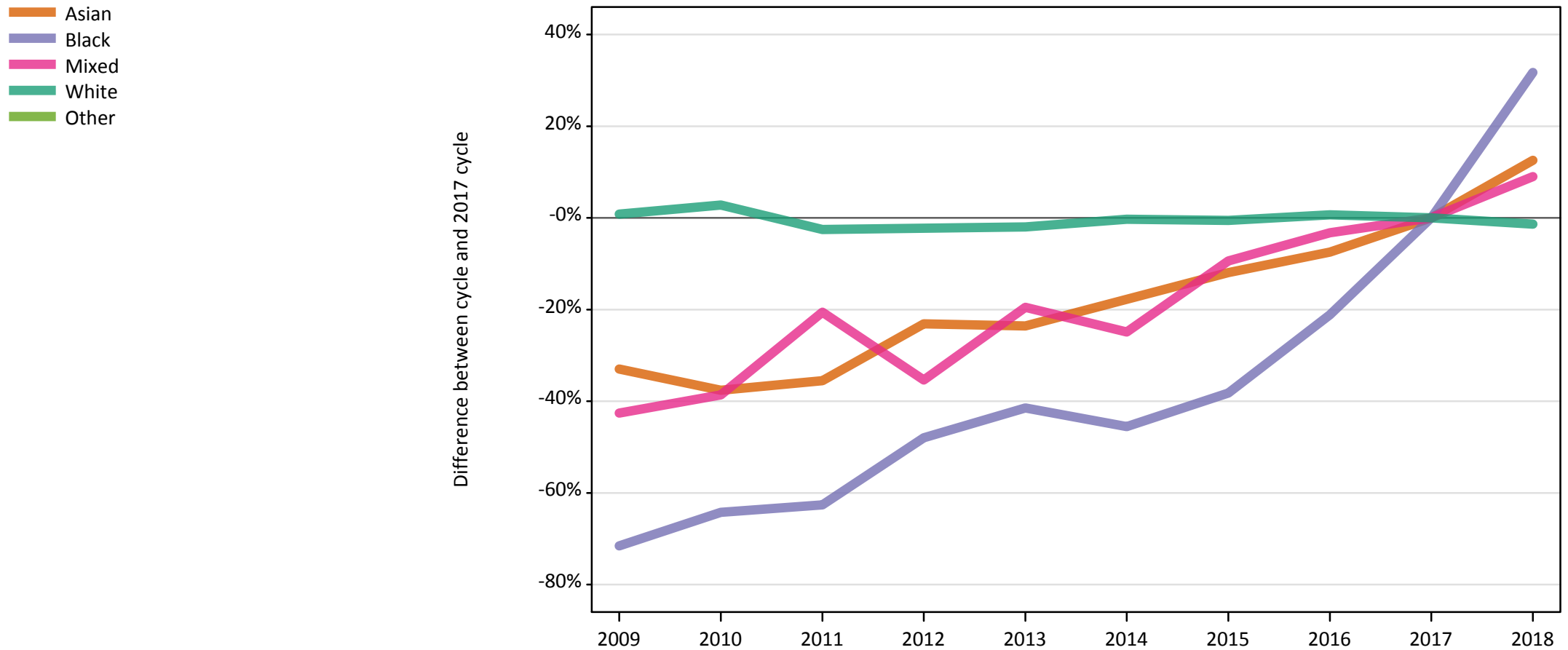
Placed applicants: change relative to 2017 cycle totals

Applicant Status	Ethnic group	2009	2010	2011	2012	2013	2014	2015	2016	2017	2018
Placed	Asian	-38%	-38%	-33%	-28%	-25%	-21%	-11%	-7%	0%	9%
	Black	-60%	-45%	-41%	-34%	-35%	-36%	-19%	-16%	0%	18%
	Mixed	-40%	-38%	-27%	-31%	-26%	-29%	-12%	-4%	0%	13%
	White	-21%	-15%	-17%	-18%	-16%	-13%	-5%	-1%	0%	1%
	Other	-57%	-68%	-61%	-38%	-37%	-40%	2%	2%	0%	27%

Note: The percentage change is not recorded in the above table for groups with fewer than 10 placed applicants in that cycle or in the 2017 cycle.

E.25 Placed 18 year old applicants from Scotland by ethnic group: 5 days after A level results day

Placed 18 year old applicants: change relative to 2017 cycle totals



Note: The percentage change is not plotted in the above chart for groups with fewer than 30 placed applicants in any one cycle.

E.26 Placed 18 year old applicants from Scotland by ethnic group: 5 days after A level results day

Applicant Status	Ethnic group	2009	2010	2011	2012	2013	2014	2015	2016	2017	2018
Placed	Asian	450	420	430	520	510	550	590	620	670	750
	Black	40	40	50	60	70	70	80	100	120	160
	Mixed	160	170	220	180	220	210	250	270	280	300
	White	13,490	13,750	13,040	13,070	13,120	13,340	13,310	13,470	13,380	13,200
	Other	30	20	30	40	40	40	60	60	60	80

E.27 Placed 18 year old applicants from Scotland by ethnic group: 5 days after A level results day

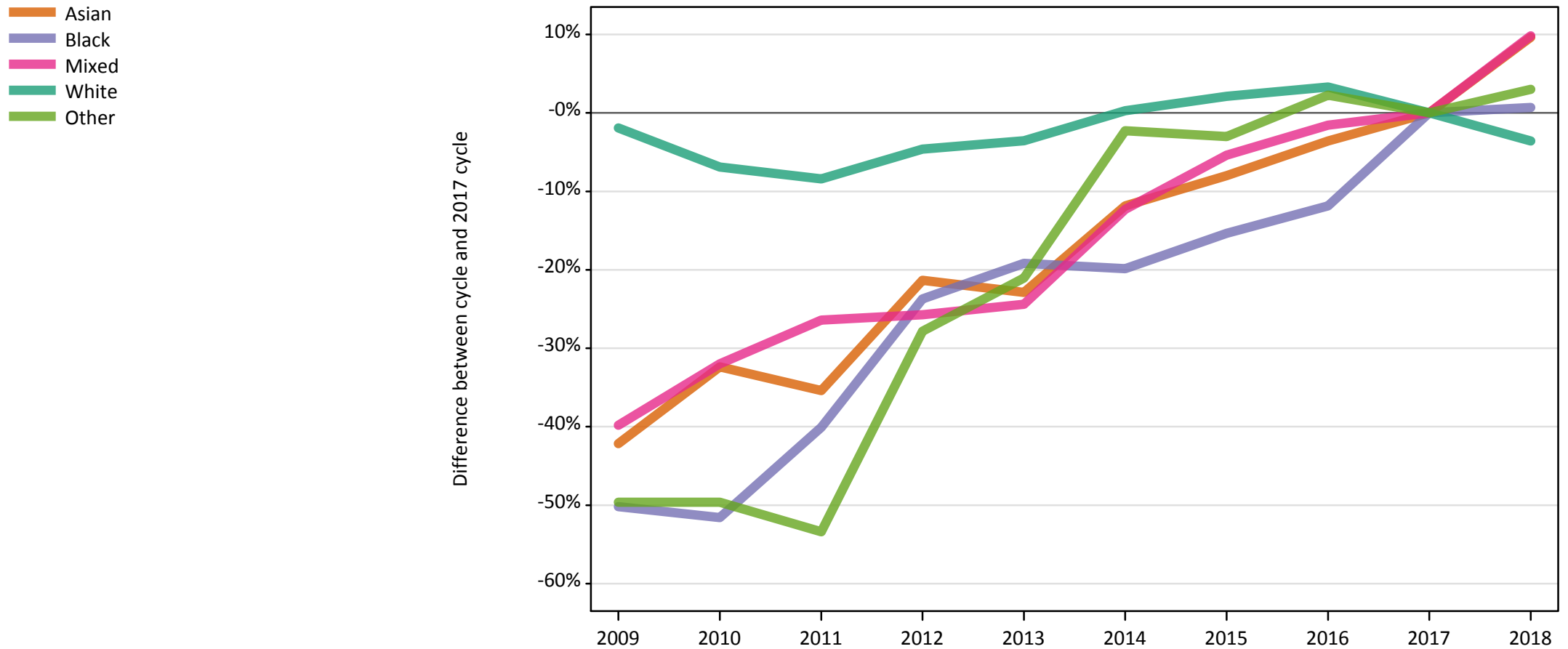
Placed 18 year old applicants: change relative to 2017 cycle totals

Applicant Status	Ethnic group	2009	2010	2011	2012	2013	2014	2015	2016	2017	2018
Placed	Asian	-33%	-38%	-36%	-23%	-24%	-18%	-12%	-7%	0%	13%
	Black	-72%	-64%	-63%	-48%	-41%	-46%	-38%	-21%	0%	32%
	Mixed	-43%	-39%	-21%	-35%	-19%	-25%	-9%	-3%	0%	9%
	White	1%	3%	-3%	-2%	-2%	-0%	-1%	1%	0%	-1%
	Other	-54%	-73%	-53%	-41%	-34%	-41%	3%	2%	0%	29%

Note: The percentage change is not recorded in the above table for groups with fewer than 10 placed applicants in that cycle or in the 2017 cycle.

E.28 Placed applicants from Wales by ethnic group: 5 days after A level results day

Placed applicants: change relative to 2017 cycle totals



Note: The percentage change is not plotted in the above chart for groups with fewer than 30 placed applicants in any one cycle.

E.29 Placed applicants from Wales by ethnic group: 5 days after A level results day

Applicant Status	Ethnic group	2009	2010	2011	2012	2013	2014	2015	2016	2017	2018
Placed	Asian	420	490	470	570	560	640	670	700	730	800
	Black	140	140	170	220	230	230	240	250	290	290
	Mixed	270	300	330	330	340	390	420	440	450	490
	White	16,110	15,290	15,050	15,670	15,840	16,470	16,770	16,970	16,430	15,840
	Other	70	70	60	100	110	130	130	140	130	140

E.30 Placed applicants from Wales by ethnic group: 5 days after A level results day

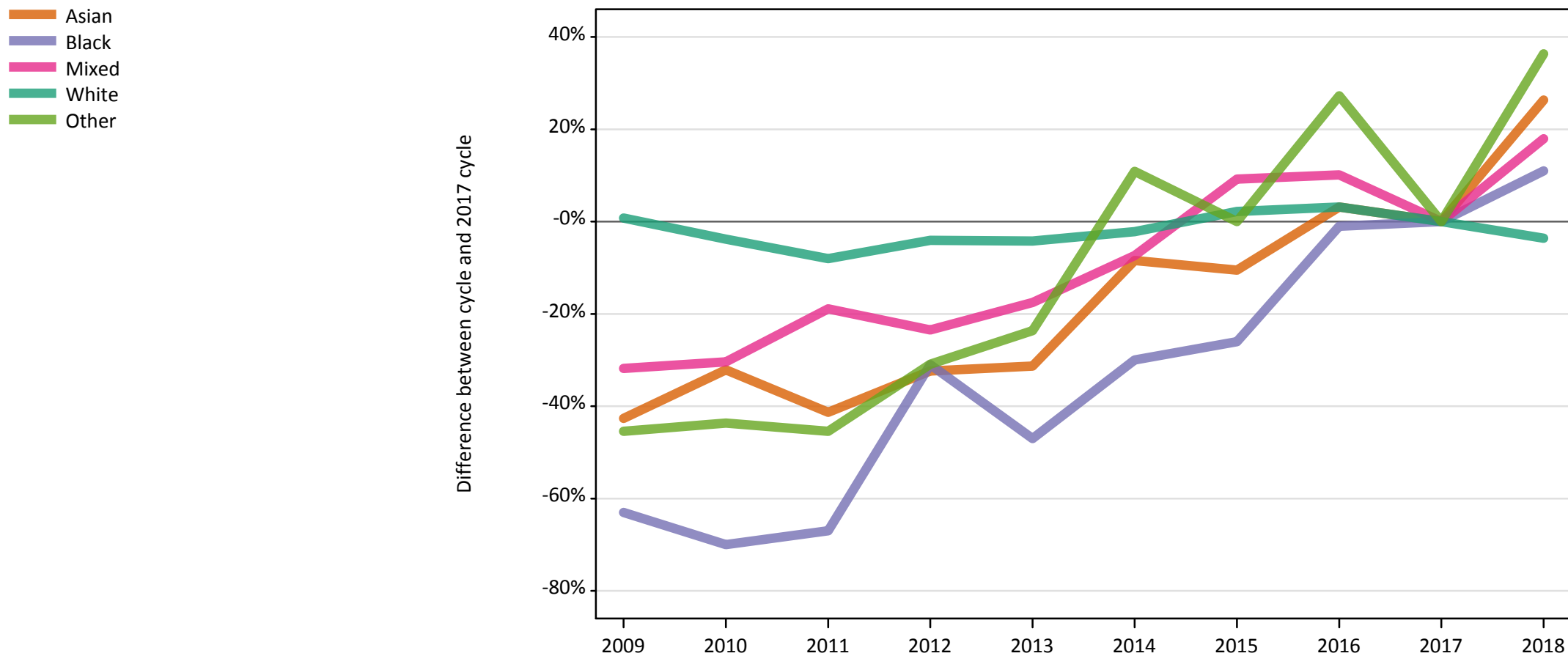
Placed applicants: change relative to 2017 cycle totals

Applicant Status	Ethnic group	2009	2010	2011	2012	2013	2014	2015	2016	2017	2018
Placed	Asian	-42%	-32%	-35%	-21%	-23%	-12%	-8%	-4%	0%	10%
	Black	-50%	-52%	-40%	-24%	-19%	-20%	-15%	-12%	0%	1%
	Mixed	-40%	-32%	-26%	-26%	-24%	-12%	-5%	-2%	0%	10%
	White	-2%	-7%	-8%	-5%	-4%	0%	2%	3%	0%	-4%
	Other	-50%	-50%	-53%	-28%	-21%	-2%	-3%	2%	0%	3%

Note: The percentage change is not recorded in the above table for groups with fewer than 10 placed applicants in that cycle or in the 2017 cycle.

E.31 Placed 18 year old applicants from Wales by ethnic group: 5 days after A level results day

Placed 18 year old applicants: change relative to 2017 cycle totals



Note: The percentage change is not plotted in the above chart for groups with fewer than 30 placed applicants in any one cycle.

E.32 Placed 18 year old applicants from Wales by ethnic group: 5 days after A level results day

Applicant Status	Ethnic group	2009	2010	2011	2012	2013	2014	2015	2016	2017	2018
Placed	Asian	220	260	220	260	260	350	340	390	380	480
	Black	40	30	30	70	50	70	70	100	100	110
	Mixed	150	150	180	170	180	200	240	240	220	260
	White	9,320	8,900	8,510	8,880	8,860	9,050	9,450	9,540	9,250	8,920
	Other	30	30	30	40	40	60	60	70	60	80

E.33 Placed 18 year old applicants from Wales by ethnic group: 5 days after A level results day

Placed 18 year old applicants: change relative to 2017 cycle totals

Applicant Status	Ethnic group	2009	2010	2011	2012	2013	2014	2015	2016	2017	2018
Placed	Asian	-43%	-32%	-41%	-32%	-31%	-8%	-11%	3%	0%	26%
	Black	-63%	-70%	-67%	-31%	-47%	-30%	-26%	-1%	0%	11%
	Mixed	-32%	-30%	-19%	-24%	-18%	-7%	9%	10%	0%	18%
	White	1%	-4%	-8%	-4%	-4%	-2%	2%	3%	0%	-4%
	Other	-45%	-44%	-45%	-31%	-24%	11%	0%	27%	0%	36%

Note: The percentage change is not recorded in the above table for groups with fewer than 10 placed applicants in that cycle or in the 2017 cycle.