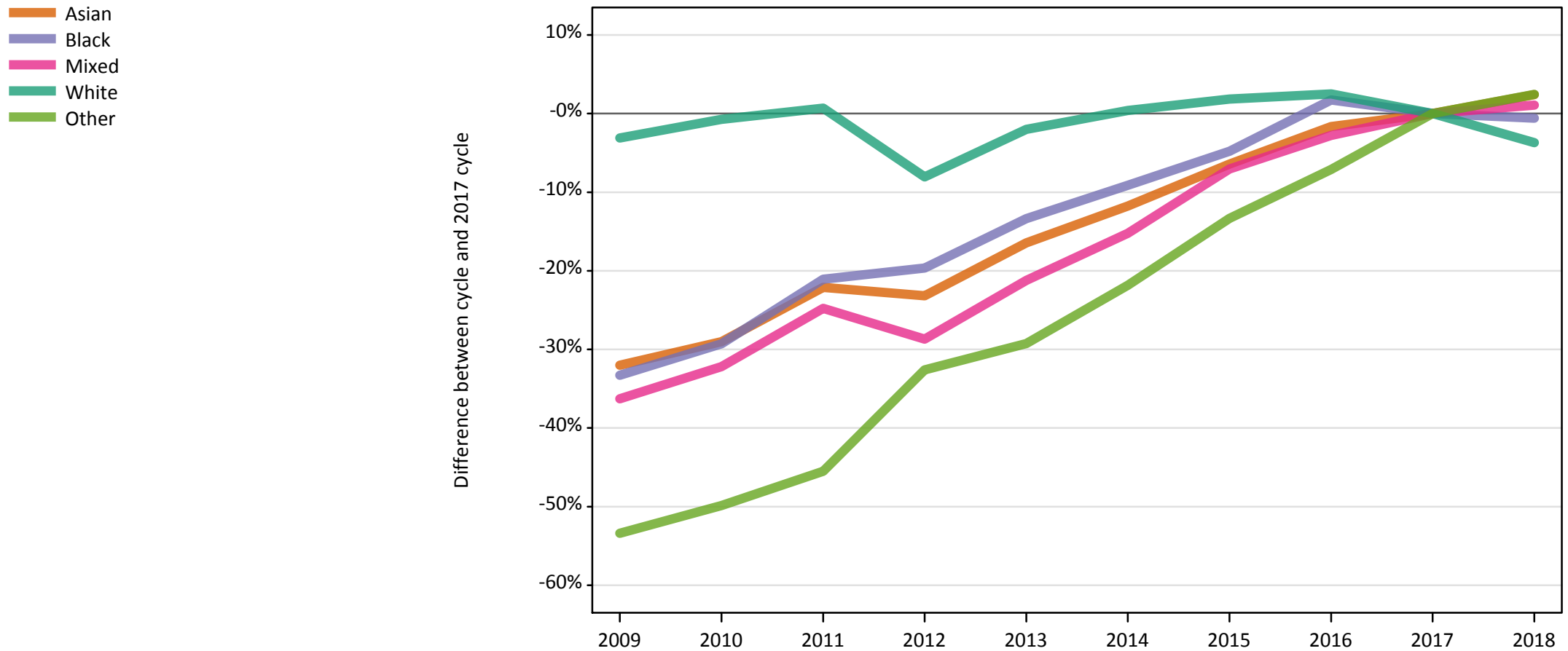


Daily Clearing Analysis: Ethnicity

Analysis at 00:05 on Wednesday 22 August 2018 (6 days after A level results day)

E.1 Placed applicants from UK by ethnic group: 6 days after A level results day

Placed applicants: change relative to 2017 cycle totals



Note: The percentage change is not plotted in the above chart for groups with fewer than 30 placed applicants in any one cycle.

E.2 Placed applicants from UK by ethnic group: 6 days after A level results day

Applicant Status	Ethnic group	2009	2010	2011	2012	2013	2014	2015	2016	2017	2018
Placed	Asian	32,430	33,860	37,150	36,650	39,850	42,090	44,640	46,910	47,700	48,850
	Black	18,860	19,980	22,310	22,710	24,490	25,690	26,910	28,760	28,260	28,100
	Mixed	11,610	12,350	13,710	12,990	14,350	15,440	16,930	17,710	18,220	18,410
	White	298,090	305,430	309,780	282,900	301,460	308,840	313,330	315,340	307,650	296,330
	Other	3,190	3,430	3,720	4,610	4,830	5,340	5,920	6,350	6,830	7,000

E.3 Placed applicants from UK by ethnic group: 6 days after A level results day

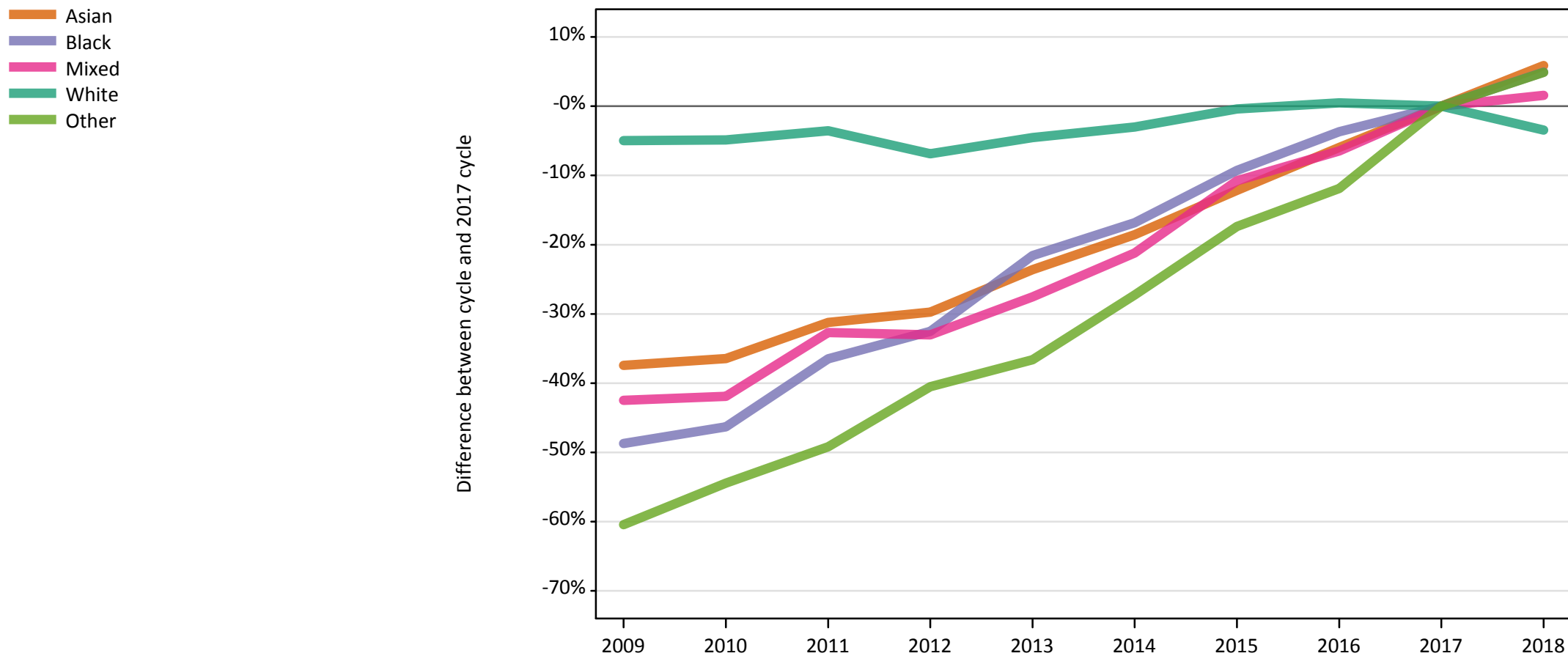
Placed applicants: change relative to 2017 cycle totals

Applicant Status	Ethnic group	2009	2010	2011	2012	2013	2014	2015	2016	2017	2018
Placed	Asian	-32%	-29%	-22%	-23%	-16%	-12%	-6%	-2%	0%	2%
	Black	-33%	-29%	-21%	-20%	-13%	-9%	-5%	2%	0%	-1%
	Mixed	-36%	-32%	-25%	-29%	-21%	-15%	-7%	-3%	0%	1%
	White	-3%	-1%	1%	-8%	-2%	0%	2%	2%	0%	-4%
	Other	-53%	-50%	-46%	-33%	-29%	-22%	-13%	-7%	0%	2%

Note: The percentage change is not recorded in the above table for groups with fewer than 10 placed applicants in that cycle or in the 2017 cycle.

E.4 Placed 18 year old applicants from UK by ethnic group: 6 days after A level results day

Placed 18 year old applicants: change relative to 2017 cycle totals



Note: The percentage change is not plotted in the above chart for groups with fewer than 30 placed applicants in any one cycle.

E.5 Placed 18 year old applicants from UK by ethnic group: 6 days after A level results day

Applicant Status	Ethnic group	2009	2010	2011	2012	2013	2014	2015	2016	2017	2018
Placed	Asian	17,520	17,790	19,260	19,670	21,390	22,800	24,590	26,330	27,990	29,640
	Black	5,990	6,270	7,410	7,880	9,150	9,710	10,590	11,240	11,670	12,250
	Mixed	5,920	5,980	6,920	6,890	7,450	8,110	9,180	9,620	10,290	10,450
	White	171,220	171,380	173,750	167,810	172,010	174,760	179,450	181,030	180,170	173,980
	Other	1,350	1,550	1,730	2,030	2,160	2,480	2,820	3,000	3,410	3,570

E.6 Placed 18 year old applicants from UK by ethnic group: 6 days after A level results day

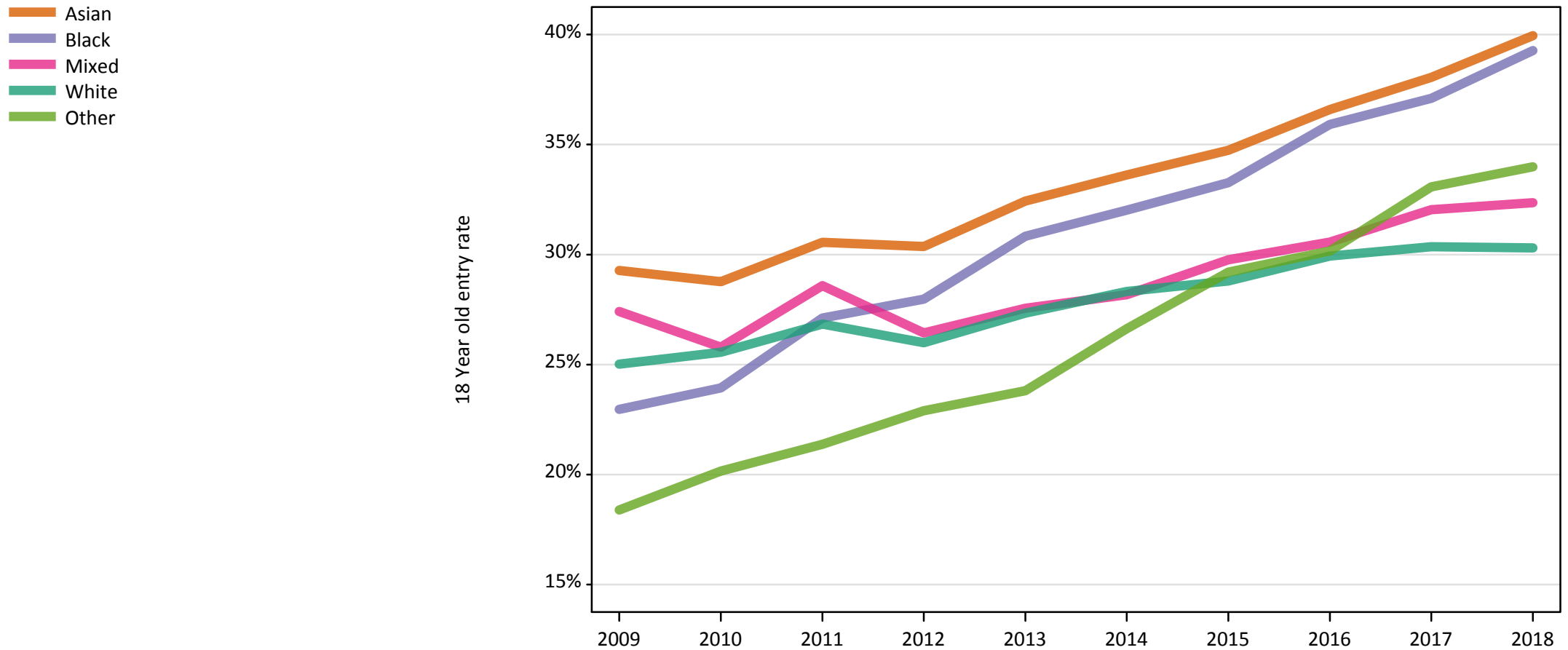
Placed 18 year old applicants: change relative to 2017 cycle totals

Applicant Status	Ethnic group	2009	2010	2011	2012	2013	2014	2015	2016	2017	2018
Placed	Asian	-37%	-36%	-31%	-30%	-24%	-19%	-12%	-6%	0%	6%
	Black	-49%	-46%	-37%	-33%	-22%	-17%	-9%	-4%	0%	5%
	Mixed	-42%	-42%	-33%	-33%	-28%	-21%	-11%	-6%	0%	2%
	White	-5%	-5%	-4%	-7%	-5%	-3%	-0%	0%	0%	-3%
	Other	-60%	-54%	-49%	-41%	-37%	-27%	-17%	-12%	0%	5%

Note: The percentage change is not recorded in the above table for groups with fewer than 10 placed applicants in that cycle or in the 2017 cycle.

E.7 Placed 18 year old applicants from UK by ethnic group: 6 days after A level results day

Placed 18 year old applicants: entry rate



E.8 Placed 18 year old applicants from UK by ethnic group: 6 days after A level results day

Placed 18 year old applicants: entry rate

Applicant Status	Ethnic group	2009	2010	2011	2012	2013	2014	2015	2016	2017	2018
Placed	Asian	29.3%	28.8%	30.6%	30.4%	32.4%	33.6%	34.7%	36.6%	38.1%	40.0%
	Black	23.0%	23.9%	27.1%	28.0%	30.8%	32.0%	33.3%	35.9%	37.1%	39.3%
	Mixed	27.4%	25.8%	28.6%	26.4%	27.6%	28.2%	29.8%	30.6%	32.0%	32.4%
	White	25.0%	25.6%	26.8%	26.0%	27.3%	28.3%	28.8%	29.9%	30.4%	30.3%
	Other	18.4%	20.2%	21.4%	22.9%	23.8%	26.6%	29.2%	30.2%	33.1%	34.0%

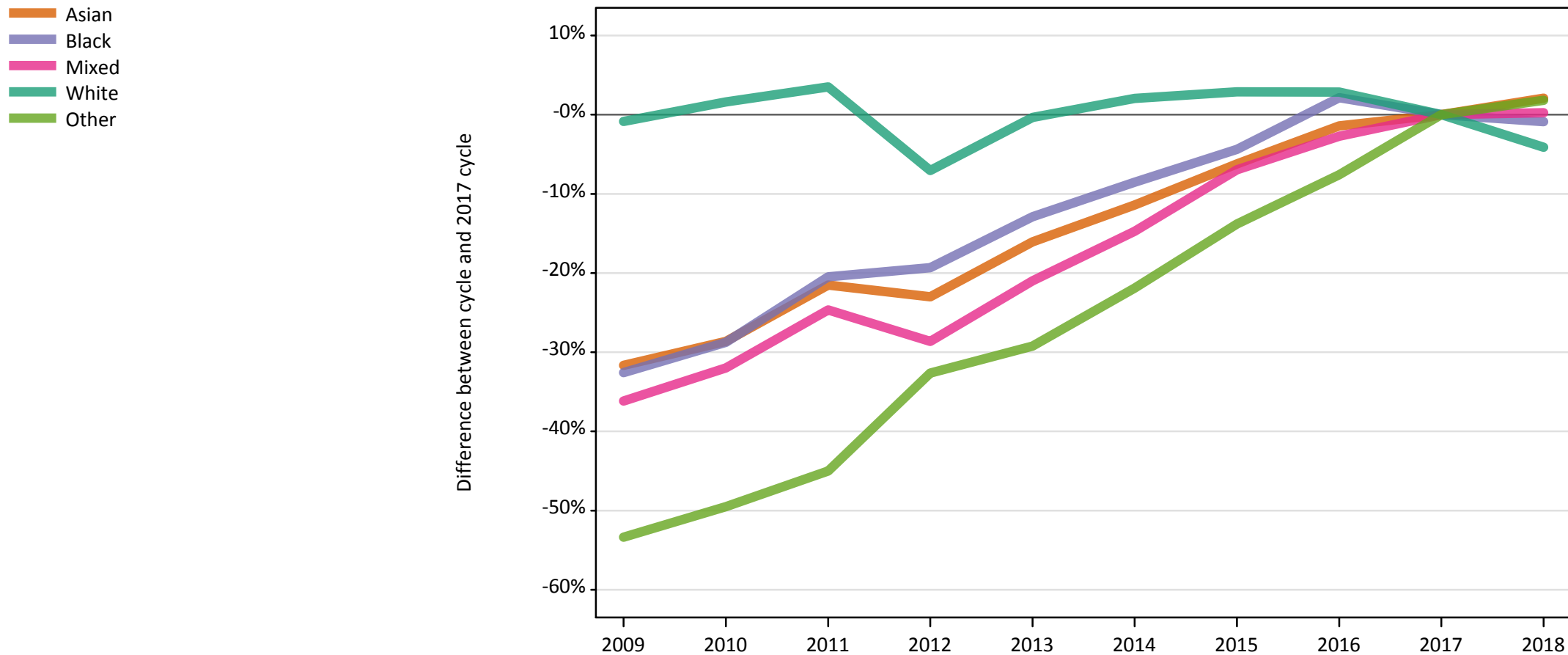
E.9 Placed 18 year old applicants from UK by ethnic group: 6 days after A level results day

Placed 18 year old applicants: entry rate (indexed to 100 = White ethnic group)

Applicant Status	Ethnic group	2009	2010	2011	2012	2013	2014	2015	2016	2017	2018
Placed	Asian	117	113	114	117	119	119	121	122	125	132
	Black	92	94	101	108	113	113	116	120	122	130
	Mixed	110	101	107	102	101	99	103	102	106	107
	White	100	100	100	100	100	100	100	100	100	100
	Other	74	79	80	88	87	94	101	101	109	112

E.10 Placed applicants from England by ethnic group: 6 days after A level results day

Placed applicants: change relative to 2017 cycle totals



Note: The percentage change is not plotted in the above chart for groups with fewer than 30 placed applicants in any one cycle.

E.11 Placed applicants from England by ethnic group: 6 days after A level results day

Applicant Status	Ethnic group	2009	2010	2011	2012	2013	2014	2015	2016	2017	2018
Placed	Asian	30,970	32,350	35,560	34,900	38,040	40,150	42,500	44,680	45,320	46,270
	Black	18,510	19,560	21,830	22,150	23,910	25,110	26,250	28,040	27,450	27,210
	Mixed	10,880	11,590	12,840	12,160	13,460	14,530	15,850	16,580	17,040	17,080
	White	245,530	251,620	256,360	230,150	246,750	252,740	254,780	254,710	247,630	237,430
	Other	3,040	3,290	3,580	4,390	4,610	5,090	5,620	6,020	6,520	6,630

E.12 Placed applicants from England by ethnic group: 6 days after A level results day

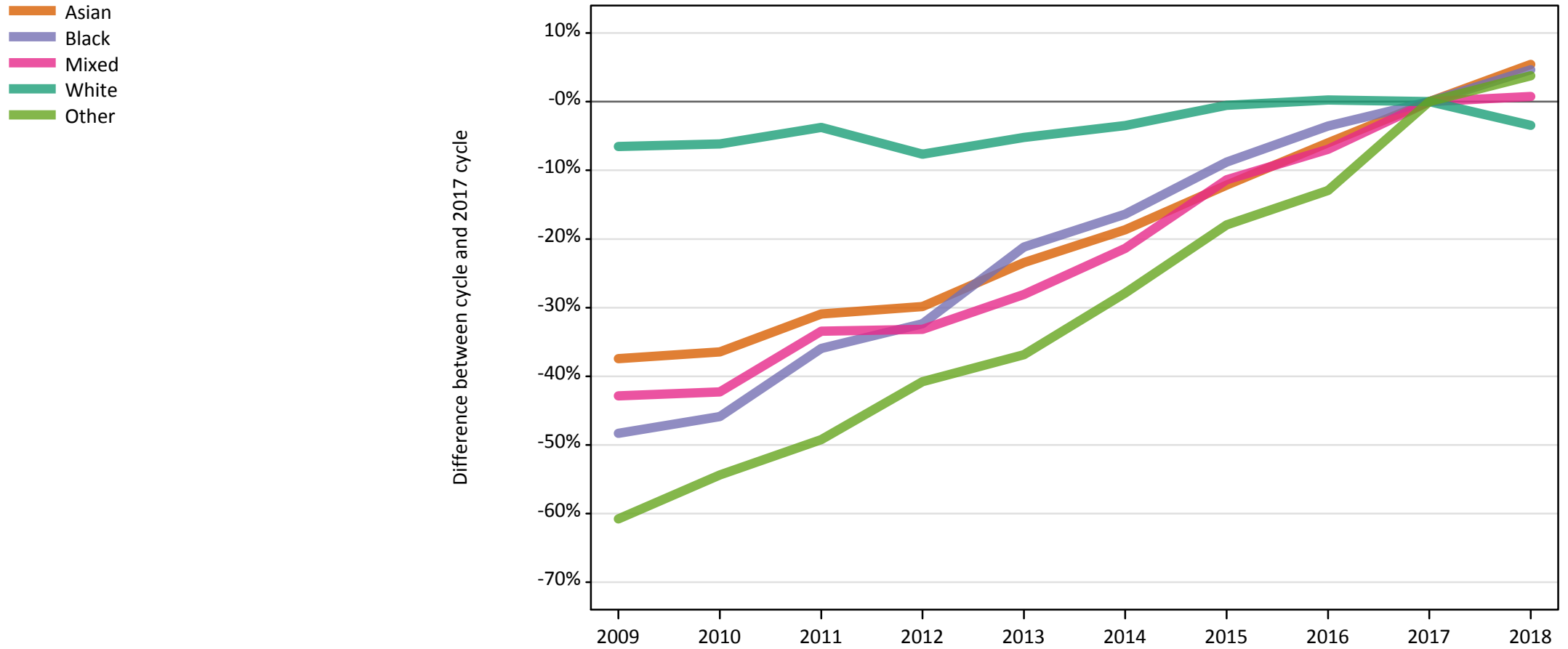
Placed applicants: change relative to 2017 cycle totals

Applicant Status	Ethnic group	2009	2010	2011	2012	2013	2014	2015	2016	2017	2018
Placed	Asian	-32%	-29%	-22%	-23%	-16%	-11%	-6%	-1%	0%	2%
	Black	-33%	-29%	-20%	-19%	-13%	-9%	-4%	2%	0%	-1%
	Mixed	-36%	-32%	-25%	-29%	-21%	-15%	-7%	-3%	0%	0%
	White	-1%	2%	4%	-7%	-0%	2%	3%	3%	0%	-4%
	Other	-53%	-50%	-45%	-33%	-29%	-22%	-14%	-8%	0%	2%

Note: The percentage change is not recorded in the above table for groups with fewer than 10 placed applicants in that cycle or in the 2017 cycle.

E.13 Placed 18 year old applicants from England by ethnic group: 6 days after A level results day

Placed 18 year old applicants: change relative to 2017 cycle totals



Note: The percentage change is not plotted in the above chart for groups with fewer than 30 placed applicants in any one cycle.

E.14 Placed 18 year old applicants from England by ethnic group: 6 days after A level results day

Applicant Status	Ethnic group	2009	2010	2011	2012	2013	2014	2015	2016	2017	2018
Placed	Asian	16,780	17,040	18,530	18,820	20,530	21,820	23,560	25,220	26,820	28,280
	Black	5,910	6,190	7,320	7,730	9,010	9,560	10,430	11,030	11,430	11,960
	Mixed	5,550	5,610	6,470	6,490	6,990	7,640	8,610	9,040	9,720	9,790
	White	139,880	140,400	144,030	138,200	141,860	144,420	148,840	150,020	149,630	144,480
	Other	1,290	1,500	1,670	1,950	2,070	2,370	2,690	2,860	3,280	3,410

E.15 Placed 18 year old applicants from England by ethnic group: 6 days after A level results day

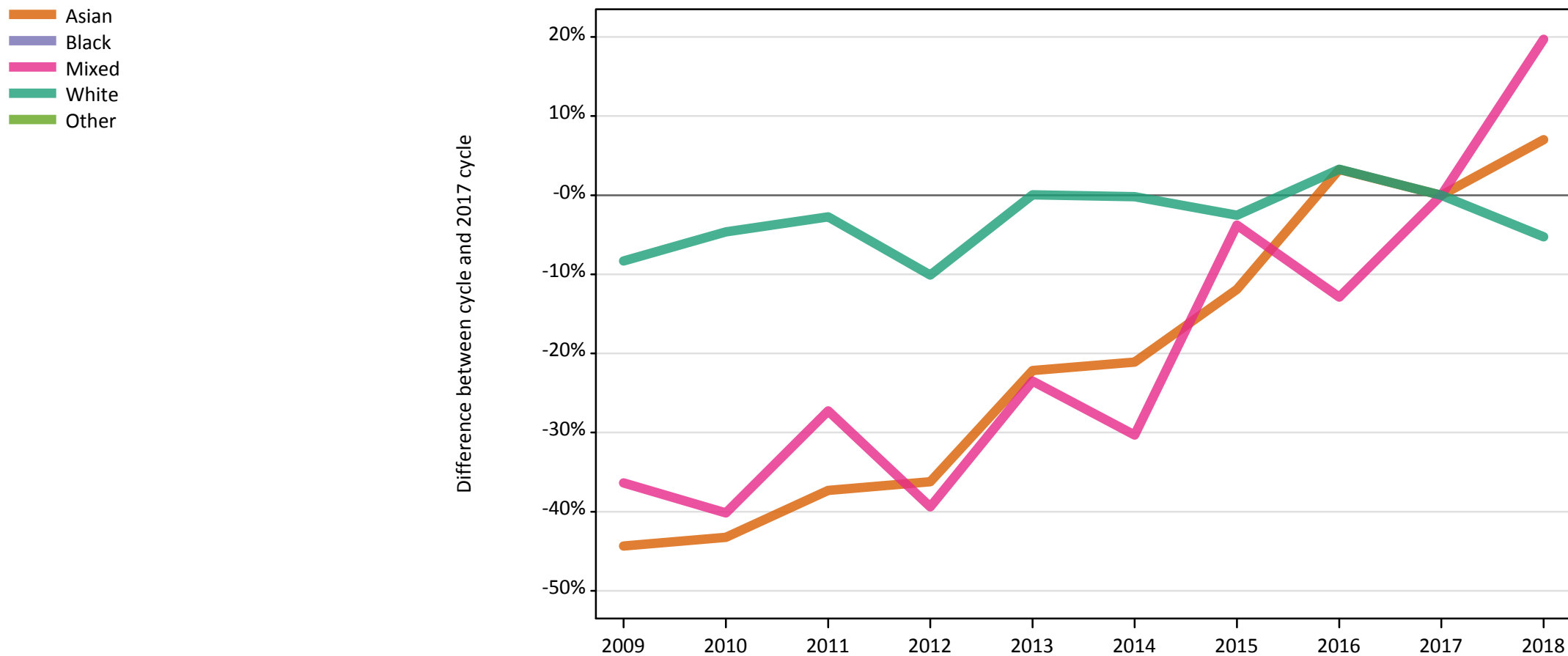
Placed 18 year old applicants: change relative to 2017 cycle totals

Applicant Status	Ethnic group	2009	2010	2011	2012	2013	2014	2015	2016	2017	2018
Placed	Asian	-37%	-36%	-31%	-30%	-23%	-19%	-12%	-6%	0%	5%
	Black	-48%	-46%	-36%	-32%	-21%	-16%	-9%	-4%	0%	5%
	Mixed	-43%	-42%	-33%	-33%	-28%	-21%	-11%	-7%	0%	1%
	White	-7%	-6%	-4%	-8%	-5%	-3%	-1%	0%	0%	-3%
	Other	-61%	-54%	-49%	-41%	-37%	-28%	-18%	-13%	0%	4%

Note: The percentage change is not recorded in the above table for groups with fewer than 10 placed applicants in that cycle or in the 2017 cycle.

E.16 Placed applicants from Northern Ireland by ethnic group: 6 days after A level results day

Placed applicants: change relative to 2017 cycle totals



Note: The percentage change is not plotted in the above chart for groups with fewer than 30 placed applicants in any one cycle.

E.17 Placed applicants from Northern Ireland by ethnic group: 6 days after A level results day

Applicant Status	Ethnic group	2009	2010	2011	2012	2013	2014	2015	2016	2017	2018
Placed	Asian	100	110	120	120	140	150	160	190	190	200
	Black	10	20	20	20	30	40	40	50	50	50
	Mixed	80	80	100	80	100	90	130	120	130	160
	White	11,830	12,310	12,550	11,600	12,910	12,880	12,580	13,330	12,910	12,230
	Other	10	20	10	10	10	20	10	20	20	20

E.18 Placed applicants from Northern Ireland by ethnic group: 6 days after A level results day

Placed applicants: change relative to 2017 cycle totals

Applicant Status	Ethnic group	2009	2010	2011	2012	2013	2014	2015	2016	2017	2018
Placed	Asian	-44%	-43%	-37%	-36%	-22%	-21%	-12%	3%	0%	7%
	Black	-74%	-66%	-68%	-54%	-40%	-20%	-30%	4%	0%	-4%
	Mixed	-36%	-40%	-27%	-39%	-23%	-30%	-4%	-13%	0%	20%
	White	-8%	-5%	-3%	-10%	0%	-0%	-3%	3%	0%	-5%
	Other	-65%	-30%	-61%	-39%	-52%	-13%	-48%	-17%	0%	-4%

Note: The percentage change is not recorded in the above table for groups with fewer than 10 placed applicants in that cycle or in the 2017 cycle.

E.19 Placed 18 year old applicants from Northern Ireland by ethnic group: 6 days after A level results day

Placed 18 year old applicants: change relative to 2017 cycle totals



Note: The percentage change is not plotted in the above chart for groups with fewer than 30 placed applicants in any one cycle.

E.20 Placed 18 year old applicants from Northern Ireland by ethnic group: 6 days after A level results day

Applicant Status	Ethnic group	2009	2010	2011	2012	2013	2014	2015	2016	2017	2018
Placed	Asian	60	60	60	60	80	80	90	100	110	120
	Black	10	0	10	10	20	10	10	20	20	10
	Mixed	50	40	60	40	60	50	80	70	80	100
	White	8,320	8,130	7,990	7,520	8,080	7,860	7,740	7,920	7,830	7,320
	Other	0	10	0	10	0	10	0	10	10	10

E.21 Placed 18 year old applicants from Northern Ireland by ethnic group: 6 days after A level results day

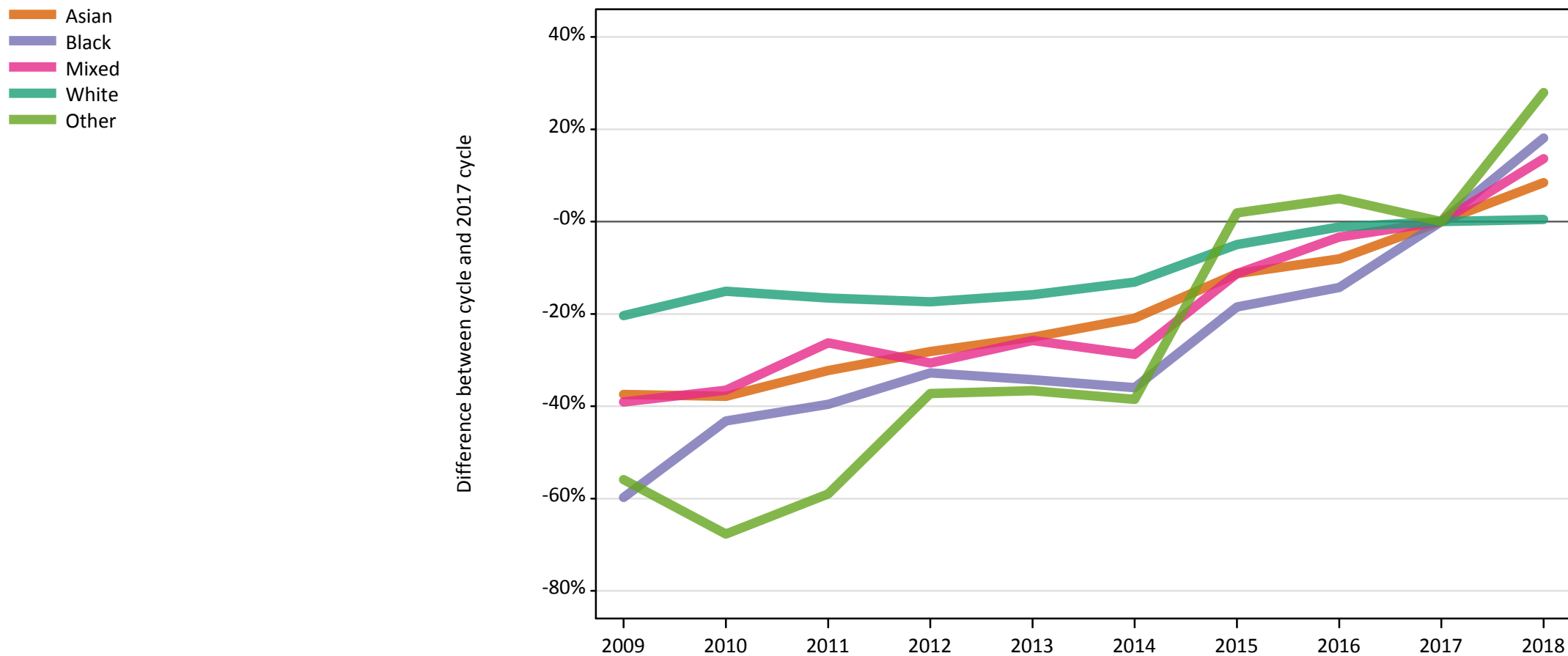
Placed 18 year old applicants: change relative to 2017 cycle totals

Applicant Status	Ethnic group	2009	2010	2011	2012	2013	2014	2015	2016	2017	2018
Placed	Asian	-45%	-44%	-46%	-45%	-31%	-28%	-18%	-7%	0%	8%
	Black	-65%		-53%	-59%	-12%	-24%	-29%	6%	0%	-35%
	Mixed	-29%	-41%	-21%	-43%	-20%	-28%	3%	-4%	0%	28%
	White	6%	4%	2%	-4%	3%	0%	-1%	1%	0%	-7%
	Other		-30%		-50%		10%		0%	0%	30%

Note: The percentage change is not recorded in the above table for groups with fewer than 10 placed applicants in that cycle or in the 2017 cycle.

E.22 Placed applicants from Scotland by ethnic group: 6 days after A level results day

Placed applicants: change relative to 2017 cycle totals



Note: The percentage change is not plotted in the above chart for groups with fewer than 30 placed applicants in any one cycle.

E.23 Placed applicants from Scotland by ethnic group: 6 days after A level results day

Applicant Status	Ethnic group	2009	2010	2011	2012	2013	2014	2015	2016	2017	2018
Placed	Asian	910	910	990	1,050	1,090	1,150	1,300	1,340	1,460	1,580
	Black	190	270	280	320	310	300	380	400	470	560
	Mixed	360	380	440	410	440	420	530	570	590	680
	White	24,350	25,970	25,510	25,270	25,730	26,570	29,060	30,220	30,580	30,710
	Other	70	50	70	100	100	100	160	170	160	210

E.24 Placed applicants from Scotland by ethnic group: 6 days after A level results day

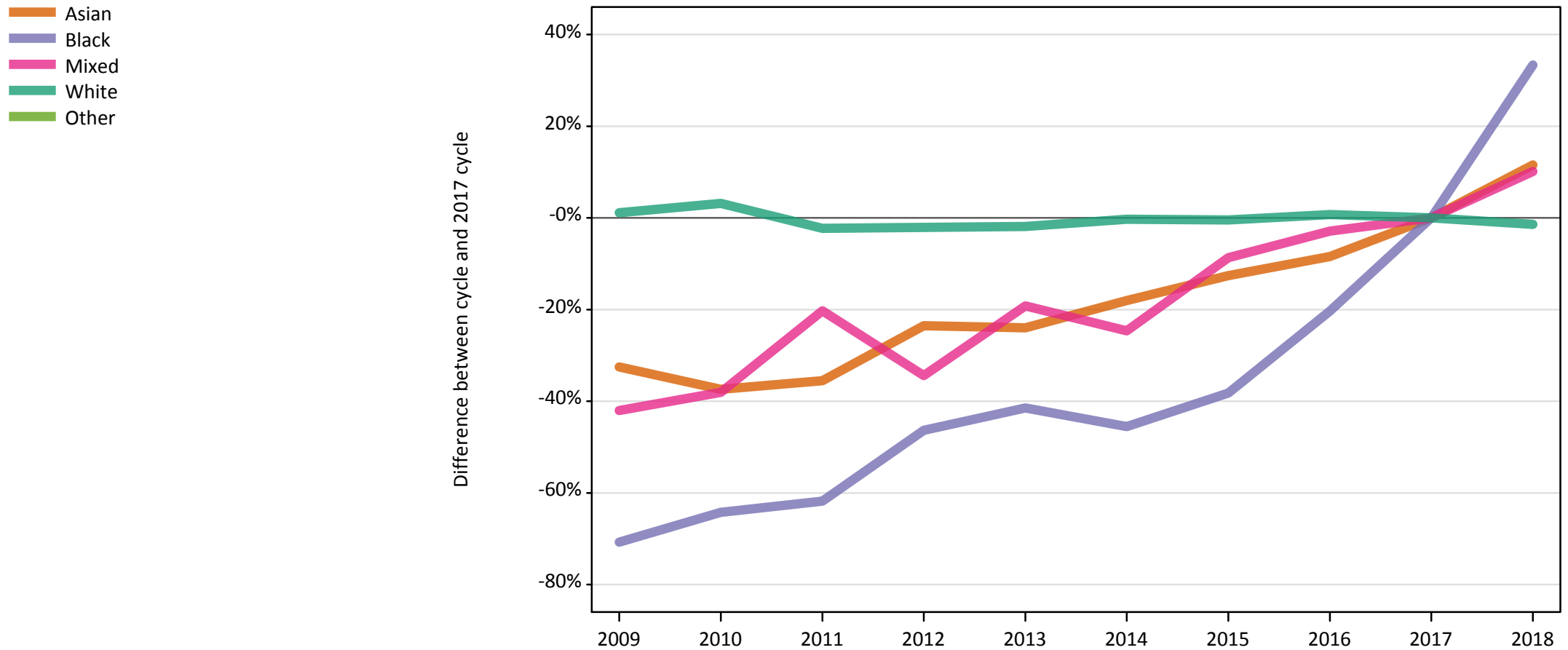
Placed applicants: change relative to 2017 cycle totals

Applicant Status	Ethnic group	2009	2010	2011	2012	2013	2014	2015	2016	2017	2018
Placed	Asian	-37%	-38%	-32%	-28%	-25%	-21%	-11%	-8%	0%	8%
	Black	-60%	-43%	-40%	-33%	-34%	-36%	-19%	-14%	0%	18%
	Mixed	-39%	-37%	-26%	-31%	-26%	-29%	-11%	-3%	0%	14%
	White	-20%	-15%	-17%	-17%	-16%	-13%	-5%	-1%	0%	0%
	Other	-56%	-68%	-59%	-37%	-37%	-39%	2%	5%	0%	28%

Note: The percentage change is not recorded in the above table for groups with fewer than 10 placed applicants in that cycle or in the 2017 cycle.

E.25 Placed 18 year old applicants from Scotland by ethnic group: 6 days after A level results day

Placed 18 year old applicants: change relative to 2017 cycle totals



Note: The percentage change is not plotted in the above chart for groups with fewer than 30 placed applicants in any one cycle.

E.26 Placed 18 year old applicants from Scotland by ethnic group: 6 days after A level results day

Applicant Status	Ethnic group	2009	2010	2011	2012	2013	2014	2015	2016	2017	2018
Placed	Asian	460	420	440	520	510	550	590	620	680	750
	Black	40	40	50	70	70	70	80	100	120	160
	Mixed	160	170	220	180	220	210	250	270	280	300
	White	13,550	13,820	13,100	13,120	13,150	13,360	13,340	13,490	13,400	13,210
	Other	30	20	30	40	40	40	60	60	60	80

E.27 Placed 18 year old applicants from Scotland by ethnic group: 6 days after A level results day

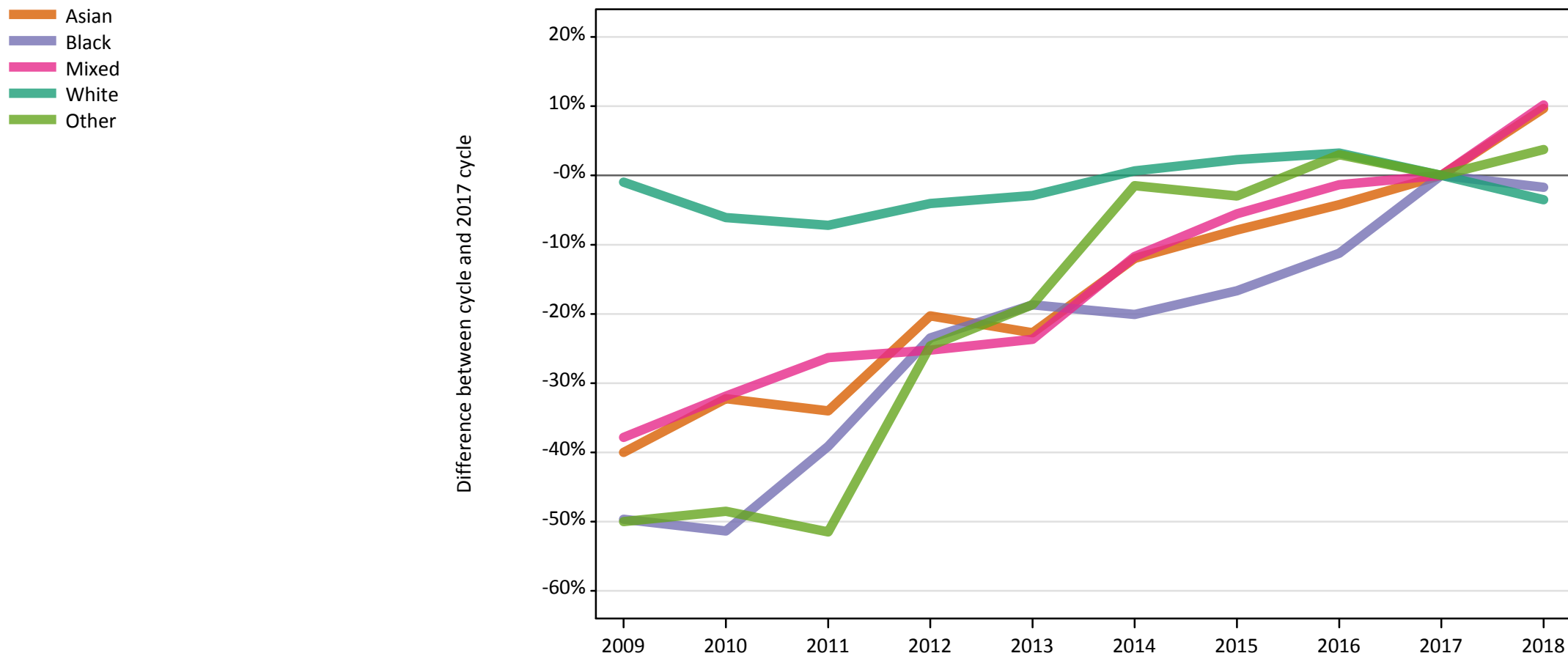
Placed 18 year old applicants: change relative to 2017 cycle totals

Applicant Status	Ethnic group	2009	2010	2011	2012	2013	2014	2015	2016	2017	2018
Placed	Asian	-33%	-37%	-36%	-24%	-24%	-18%	-13%	-8%	0%	12%
	Black	-71%	-64%	-62%	-46%	-41%	-46%	-38%	-20%	0%	33%
	Mixed	-42%	-38%	-20%	-34%	-19%	-25%	-9%	-3%	0%	10%
	White	1%	3%	-2%	-2%	-2%	-0%	-0%	1%	0%	-1%
	Other	-54%	-73%	-47%	-41%	-34%	-41%	3%	5%	0%	29%

Note: The percentage change is not recorded in the above table for groups with fewer than 10 placed applicants in that cycle or in the 2017 cycle.

E.28 Placed applicants from Wales by ethnic group: 6 days after A level results day

Placed applicants: change relative to 2017 cycle totals



Note: The percentage change is not plotted in the above chart for groups with fewer than 30 placed applicants in any one cycle.

E.29 Placed applicants from Wales by ethnic group: 6 days after A level results day

Applicant Status	Ethnic group	2009	2010	2011	2012	2013	2014	2015	2016	2017	2018
Placed	Asian	440	500	490	590	570	650	680	700	740	810
	Black	150	140	180	230	240	240	250	260	290	290
	Mixed	280	310	330	340	350	400	430	450	450	500
	White	16,380	15,530	15,350	15,870	16,060	16,650	16,920	17,080	16,540	15,960
	Other	70	70	70	100	110	130	130	140	130	140

E.30 Placed applicants from Wales by ethnic group: 6 days after A level results day

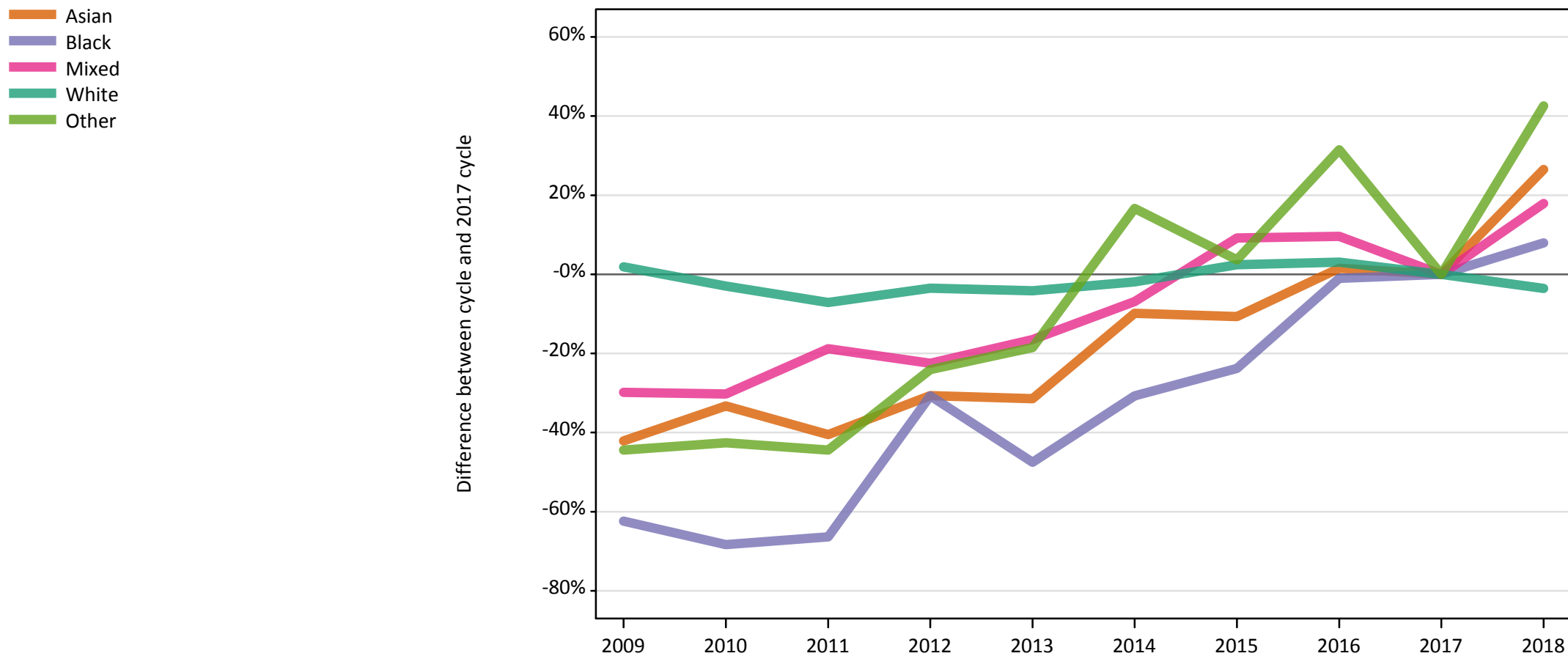
Placed applicants: change relative to 2017 cycle totals

Applicant Status	Ethnic group	2009	2010	2011	2012	2013	2014	2015	2016	2017	2018
Placed	Asian	-40%	-32%	-34%	-20%	-23%	-12%	-8%	-4%	0%	10%
	Black	-50%	-51%	-39%	-23%	-19%	-20%	-17%	-11%	0%	-2%
	Mixed	-38%	-32%	-26%	-25%	-24%	-12%	-6%	-1%	0%	10%
	White	-1%	-6%	-7%	-4%	-3%	1%	2%	3%	0%	-3%
	Other	-50%	-49%	-51%	-25%	-19%	-1%	-3%	3%	0%	4%

Note: The percentage change is not recorded in the above table for groups with fewer than 10 placed applicants in that cycle or in the 2017 cycle.

E.31 Placed 18 year old applicants from Wales by ethnic group: 6 days after A level results day

Placed 18 year old applicants: change relative to 2017 cycle totals



Note: The percentage change is not plotted in the above chart for groups with fewer than 30 placed applicants in any one cycle.

E.32 Placed 18 year old applicants from Wales by ethnic group: 6 days after A level results day

Applicant Status	Ethnic group	2009	2010	2011	2012	2013	2014	2015	2016	2017	2018
Placed	Asian	220	260	230	270	260	350	340	390	390	490
	Black	40	30	30	70	50	70	80	100	100	110
	Mixed	150	150	180	170	180	200	240	240	220	260
	White	9,480	9,030	8,640	8,980	8,910	9,130	9,530	9,590	9,300	8,970
	Other	30	30	30	40	40	60	60	70	50	80

E.33 Placed 18 year old applicants from Wales by ethnic group: 6 days after A level results day

Placed 18 year old applicants: change relative to 2017 cycle totals

Applicant Status	Ethnic group	2009	2010	2011	2012	2013	2014	2015	2016	2017	2018
Placed	Asian	-42%	-33%	-41%	-31%	-31%	-10%	-11%	2%	0%	26%
	Black	-62%	-68%	-66%	-31%	-48%	-31%	-24%	-1%	0%	8%
	Mixed	-30%	-30%	-19%	-22%	-17%	-7%	9%	10%	0%	18%
	White	2%	-3%	-7%	-4%	-4%	-2%	2%	3%	0%	-4%
	Other	-44%	-43%	-44%	-24%	-19%	17%	4%	31%	0%	43%

Note: The percentage change is not recorded in the above table for groups with fewer than 10 placed applicants in that cycle or in the 2017 cycle.