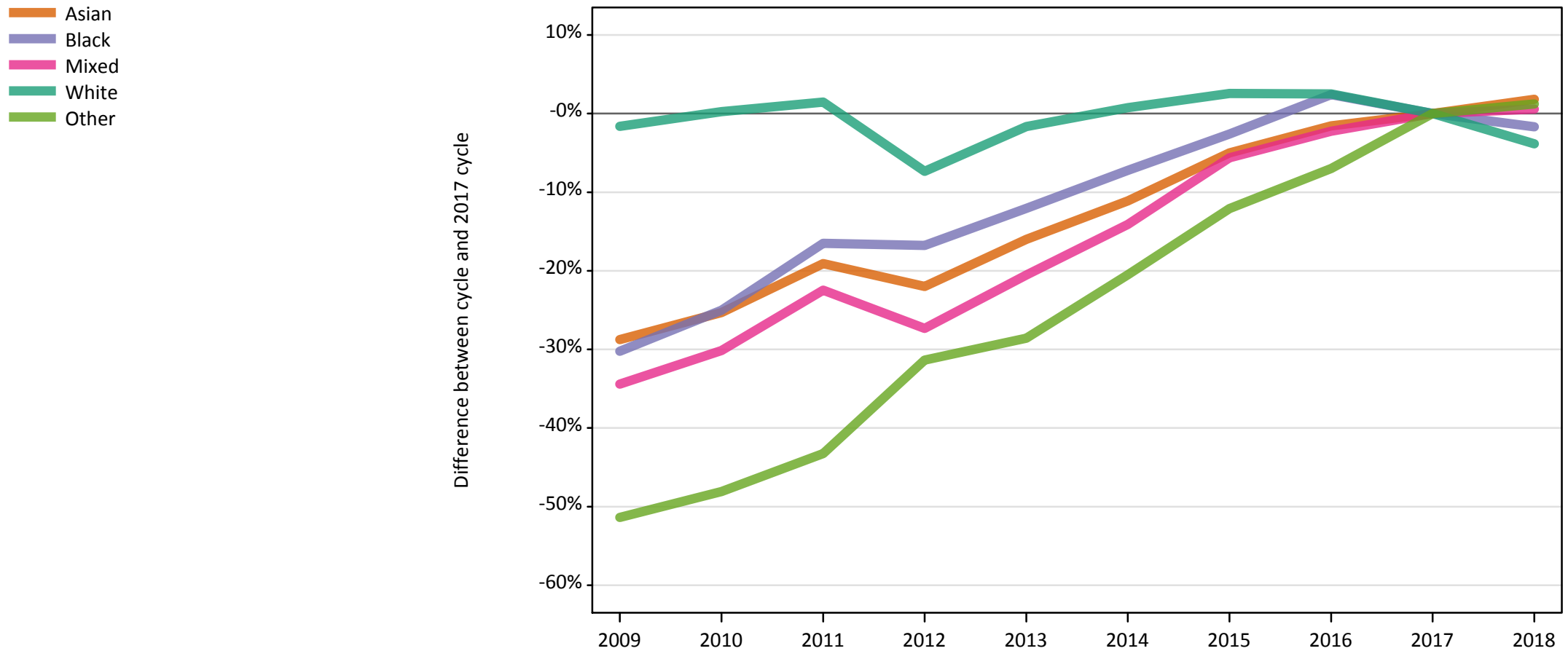


Daily Clearing Analysis: Ethnicity

Analysis at 00:05 on Friday 31 August 2018 (15 days after A level results day)

E.1 Placed applicants from UK by ethnic group: 15 days after A level results day

Placed applicants: change relative to 2017 cycle totals



Note: The percentage change is not plotted in the above chart for groups with fewer than 30 placed applicants in any one cycle.

E.2 Placed applicants from UK by ethnic group: 15 days after A level results day

Applicant Status	Ethnic group	2009	2010	2011	2012	2013	2014	2015	2016	2017	2018
Placed	Asian	36,050	37,800	40,930	39,460	42,500	44,970	48,060	49,810	50,590	51,520
	Black	21,620	23,240	25,880	25,790	27,260	28,760	30,190	31,740	30,990	30,470
	Mixed	12,450	13,260	14,720	13,790	15,080	16,300	17,910	18,560	18,980	19,090
	White	312,330	318,350	322,210	294,240	312,330	319,900	325,650	325,490	317,510	305,340
	Other	3,600	3,850	4,200	5,080	5,290	5,890	6,510	6,890	7,410	7,500

E.3 Placed applicants from UK by ethnic group: 15 days after A level results day

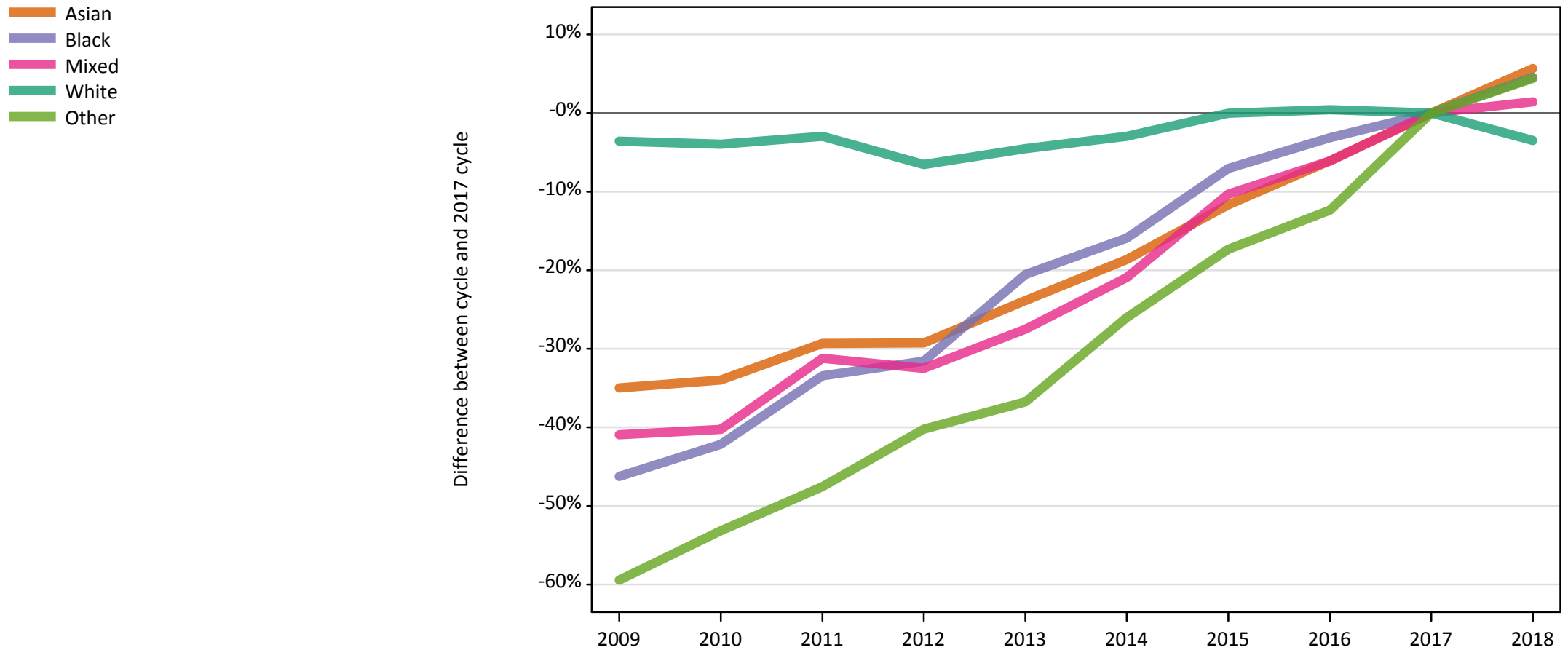
Placed applicants: change relative to 2017 cycle totals

Applicant Status	Ethnic group	2009	2010	2011	2012	2013	2014	2015	2016	2017	2018
Placed	Asian	-29%	-25%	-19%	-22%	-16%	-11%	-5%	-2%	0%	2%
	Black	-30%	-25%	-17%	-17%	-12%	-7%	-3%	2%	0%	-2%
	Mixed	-34%	-30%	-22%	-27%	-21%	-14%	-6%	-2%	0%	1%
	White	-2%	0%	1%	-7%	-2%	1%	3%	3%	0%	-4%
	Other	-51%	-48%	-43%	-31%	-29%	-21%	-12%	-7%	0%	1%

Note: The percentage change is not recorded in the above table for groups with fewer than 10 placed applicants in that cycle or in the 2017 cycle.

E.4 Placed 18 year old applicants from UK by ethnic group: 15 days after A level results day

Placed 18 year old applicants: change relative to 2017 cycle totals



Note: The percentage change is not plotted in the above chart for groups with fewer than 30 placed applicants in any one cycle.

E.5 Placed 18 year old applicants from UK by ethnic group: 15 days after A level results day

Applicant Status	Ethnic group	2009	2010	2011	2012	2013	2014	2015	2016	2017	2018
Placed	Asian	18,890	19,180	20,540	20,550	22,110	23,630	25,660	27,280	29,040	30,700
	Black	6,610	7,110	8,180	8,410	9,760	10,330	11,420	11,900	12,290	12,850
	Mixed	6,200	6,270	7,220	7,090	7,610	8,300	9,410	9,860	10,500	10,650
	White	176,640	175,950	177,780	171,220	174,900	177,780	183,170	183,940	183,180	176,810
	Other	1,450	1,680	1,880	2,140	2,270	2,650	2,960	3,140	3,590	3,740

E.6 Placed 18 year old applicants from UK by ethnic group: 15 days after A level results day

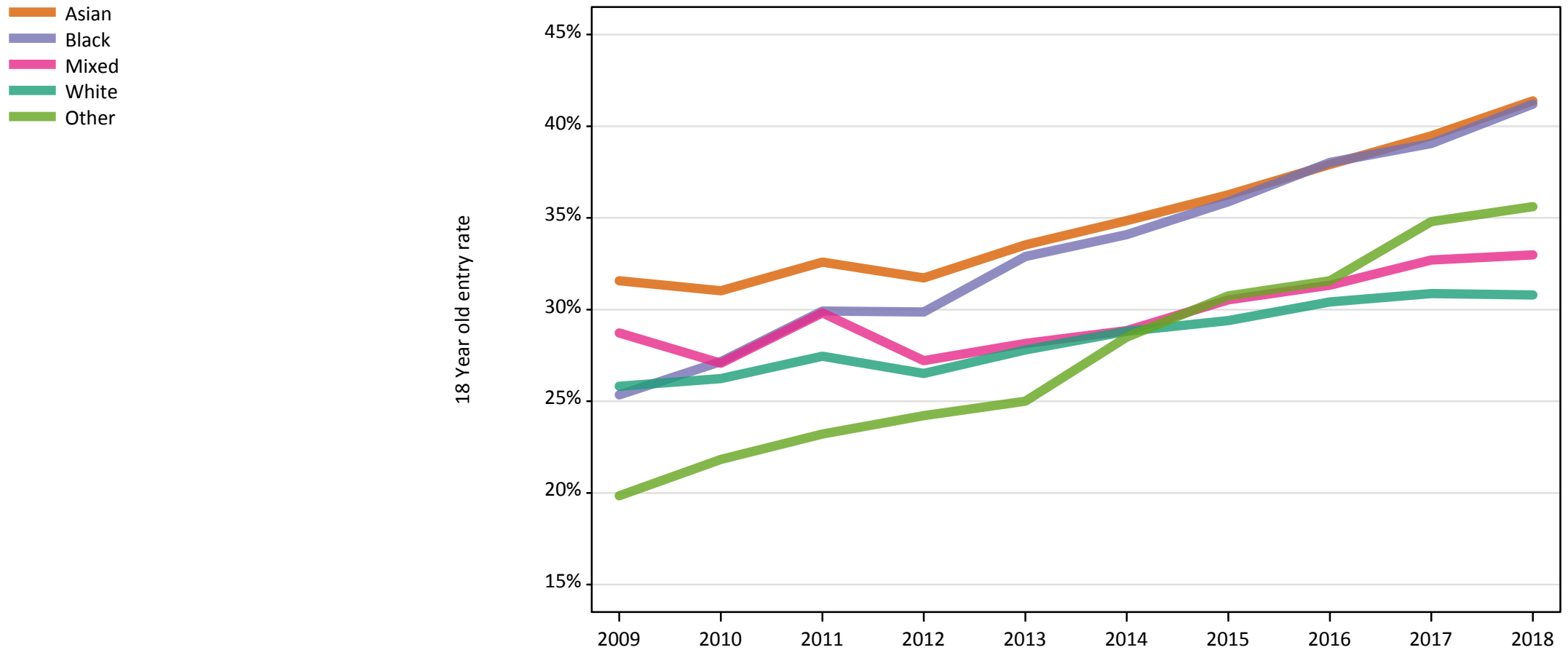
Placed 18 year old applicants: change relative to 2017 cycle totals

Applicant Status	Ethnic group	2009	2010	2011	2012	2013	2014	2015	2016	2017	2018
Placed	Asian	-35%	-34%	-29%	-29%	-24%	-19%	-12%	-6%	0%	6%
	Black	-46%	-42%	-33%	-32%	-21%	-16%	-7%	-3%	0%	5%
	Mixed	-41%	-40%	-31%	-32%	-27%	-21%	-10%	-6%	0%	1%
	White	-4%	-4%	-3%	-7%	-5%	-3%	-0%	0%	0%	-3%
	Other	-59%	-53%	-48%	-40%	-37%	-26%	-17%	-12%	0%	4%

Note: The percentage change is not recorded in the above table for groups with fewer than 10 placed applicants in that cycle or in the 2017 cycle.

E.7 Placed 18 year old applicants from UK by ethnic group: 15 days after A level results day

Placed 18 year old applicants: entry rate



E.8 Placed 18 year old applicants from UK by ethnic group: 15 days after A level results day

Placed 18 year old applicants: entry rate

Applicant Status	Ethnic group	2009	2010	2011	2012	2013	2014	2015	2016	2017	2018
Placed	Asian	31.6%	31.0%	32.6%	31.7%	33.5%	34.8%	36.3%	37.9%	39.5%	41.4%
	Black	25.3%	27.2%	29.9%	29.9%	32.9%	34.1%	35.9%	38.0%	39.1%	41.2%
	Mixed	28.7%	27.1%	29.8%	27.2%	28.1%	28.9%	30.5%	31.3%	32.7%	33.0%
	White	25.8%	26.2%	27.5%	26.5%	27.8%	28.8%	29.4%	30.4%	30.9%	30.8%
	Other	19.8%	21.8%	23.2%	24.2%	25.0%	28.5%	30.8%	31.6%	34.8%	35.6%

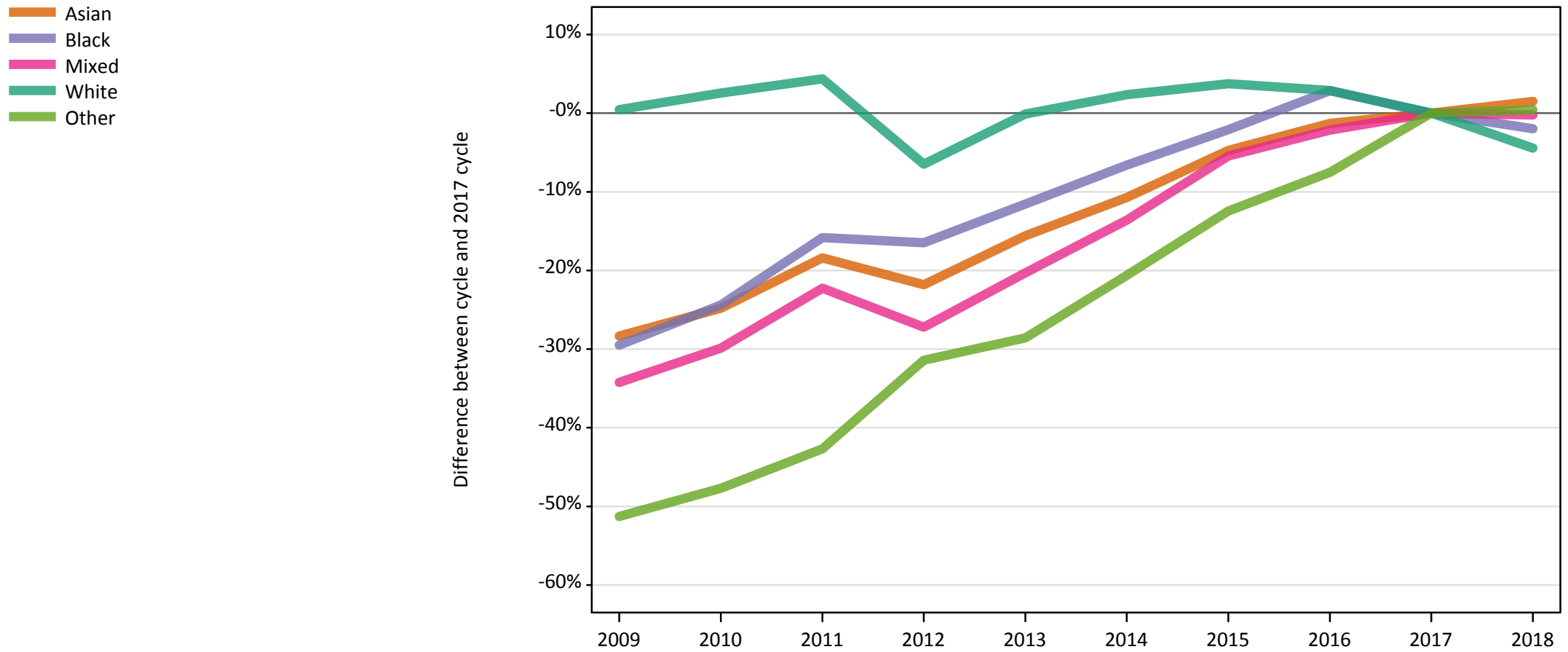
E.9 Placed 18 year old applicants from UK by ethnic group: 15 days after A level results day

Placed 18 year old applicants: entry rate (indexed to 100 = White ethnic group)

Applicant Status	Ethnic group	2009	2010	2011	2012	2013	2014	2015	2016	2017	2018
Placed	Asian	122	118	119	120	121	121	123	125	128	134
	Black	98	104	109	113	118	118	122	125	127	134
	Mixed	111	103	109	103	101	100	104	103	106	107
	White	100	100	100	100	100	100	100	100	100	100
	Other	77	83	85	91	90	99	105	104	113	116

E.10 Placed applicants from England by ethnic group: 15 days after A level results day

Placed applicants: change relative to 2017 cycle totals



Note: The percentage change is not plotted in the above chart for groups with fewer than 30 placed applicants in any one cycle.

E.11 Placed applicants from England by ethnic group: 15 days after A level results day

Applicant Status	Ethnic group	2009	2010	2011	2012	2013	2014	2015	2016	2017	2018
Placed	Asian	34,470	36,160	39,240	37,600	40,600	42,940	45,820	47,470	48,100	48,820
	Black	21,230	22,760	25,350	25,150	26,630	28,120	29,480	30,970	30,110	29,510
	Mixed	11,680	12,450	13,810	12,930	14,160	15,350	16,790	17,380	17,760	17,720
	White	256,630	262,020	266,640	238,900	255,210	261,470	265,030	262,870	255,460	244,160
	Other	3,440	3,700	4,050	4,850	5,050	5,610	6,190	6,540	7,070	7,100

E.12 Placed applicants from England by ethnic group: 15 days after A level results day

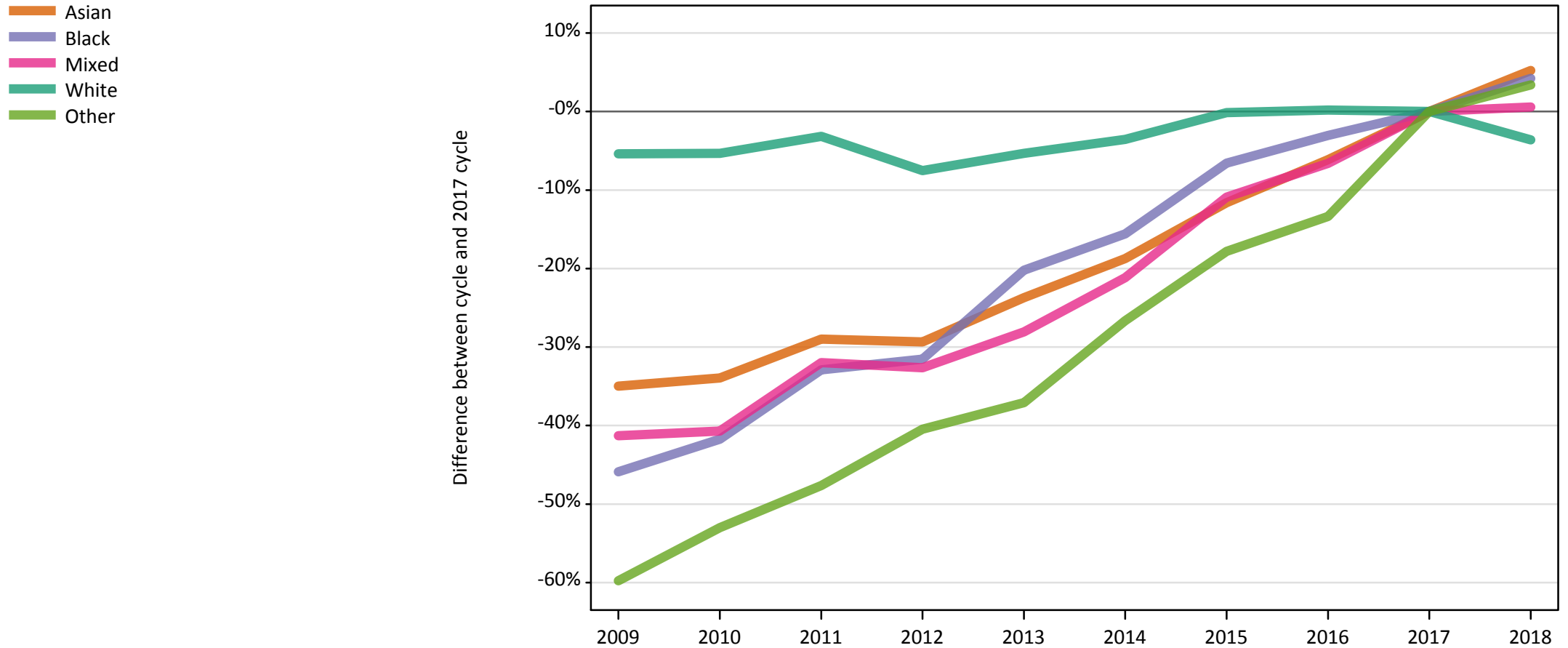
Placed applicants: change relative to 2017 cycle totals

Applicant Status	Ethnic group	2009	2010	2011	2012	2013	2014	2015	2016	2017	2018
Placed	Asian	-28%	-25%	-18%	-22%	-16%	-11%	-5%	-1%	0%	1%
	Black	-29%	-24%	-16%	-16%	-12%	-7%	-2%	3%	0%	-2%
	Mixed	-34%	-30%	-22%	-27%	-20%	-14%	-5%	-2%	0%	-0%
	White	0%	3%	4%	-6%	-0%	2%	4%	3%	0%	-4%
	Other	-51%	-48%	-43%	-31%	-29%	-21%	-12%	-8%	0%	0%

Note: The percentage change is not recorded in the above table for groups with fewer than 10 placed applicants in that cycle or in the 2017 cycle.

E.13 Placed 18 year old applicants from England by ethnic group: 15 days after A level results day

Placed 18 year old applicants: change relative to 2017 cycle totals



Note: The percentage change is not plotted in the above chart for groups with fewer than 30 placed applicants in any one cycle.

E.14 Placed 18 year old applicants from England by ethnic group: 15 days after A level results day

Applicant Status	Ethnic group	2009	2010	2011	2012	2013	2014	2015	2016	2017	2018
Placed	Asian	18,110	18,400	19,770	19,670	21,240	22,630	24,610	26,140	27,850	29,300
	Black	6,520	7,020	8,080	8,250	9,610	10,170	11,260	11,680	12,050	12,560
	Mixed	5,830	5,890	6,750	6,690	7,140	7,820	8,840	9,270	9,920	9,980
	White	143,830	143,930	147,230	140,600	143,940	146,640	151,820	152,330	152,040	146,550
	Other	1,390	1,620	1,810	2,060	2,180	2,540	2,840	2,990	3,460	3,570

E.15 Placed 18 year old applicants from England by ethnic group: 15 days after A level results day

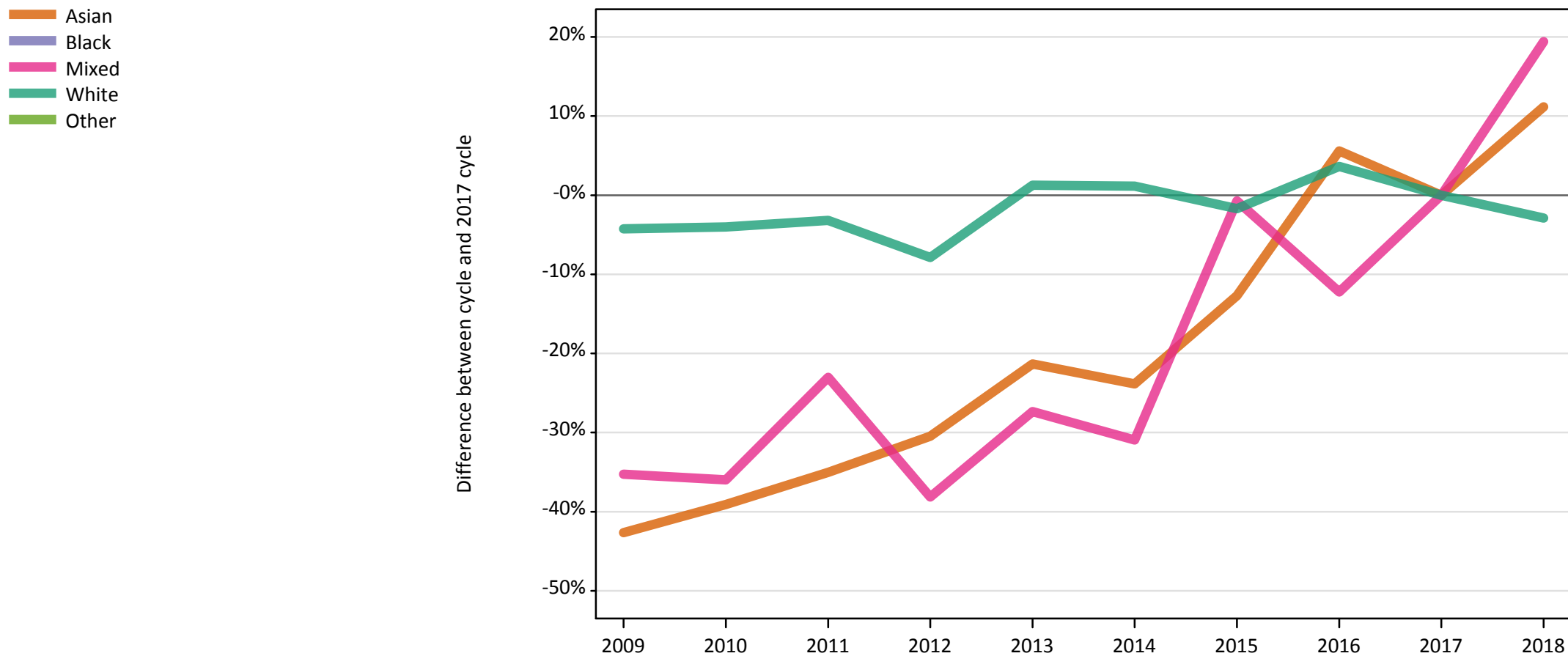
Placed 18 year old applicants: change relative to 2017 cycle totals

Applicant Status	Ethnic group	2009	2010	2011	2012	2013	2014	2015	2016	2017	2018
Placed	Asian	-35%	-34%	-29%	-29%	-24%	-19%	-12%	-6%	0%	5%
	Black	-46%	-42%	-33%	-32%	-20%	-16%	-7%	-3%	0%	4%
	Mixed	-41%	-41%	-32%	-33%	-28%	-21%	-11%	-7%	0%	1%
	White	-5%	-5%	-3%	-8%	-5%	-4%	-0%	0%	0%	-4%
	Other	-60%	-53%	-48%	-40%	-37%	-27%	-18%	-13%	0%	3%

Note: The percentage change is not recorded in the above table for groups with fewer than 10 placed applicants in that cycle or in the 2017 cycle.

E.16 Placed applicants from Northern Ireland by ethnic group: 15 days after A level results day

Placed applicants: change relative to 2017 cycle totals



Note: The percentage change is not plotted in the above chart for groups with fewer than 30 placed applicants in any one cycle.

E.17 Placed applicants from Northern Ireland by ethnic group: 15 days after A level results day

Applicant Status	Ethnic group	2009	2010	2011	2012	2013	2014	2015	2016	2017	2018
Placed	Asian	110	120	130	140	160	150	170	210	200	220
	Black	20	20	20	30	30	50	40	60	60	60
	Mixed	90	90	110	90	100	100	140	120	140	170
	White	13,190	13,220	13,330	12,690	13,950	13,930	13,540	14,280	13,770	13,380
	Other	10	20	10	10	10	20	10	20	20	30

E.18 Placed applicants from Northern Ireland by ethnic group: 15 days after A level results day

Placed applicants: change relative to 2017 cycle totals

Applicant Status	Ethnic group	2009	2010	2011	2012	2013	2014	2015	2016	2017	2018
Placed	Asian	-43%	-39%	-35%	-30%	-21%	-24%	-13%	6%	0%	11%
	Black	-74%	-68%	-65%	-53%	-42%	-12%	-37%	0%	0%	-4%
	Mixed	-35%	-36%	-23%	-38%	-27%	-31%	-1%	-12%	0%	19%
	White	-4%	-4%	-3%	-8%	1%	1%	-2%	4%	0%	-3%
	Other	-67%	-33%	-50%	-42%	-46%	-13%	-50%	-8%	0%	8%

Note: The percentage change is not recorded in the above table for groups with fewer than 10 placed applicants in that cycle or in the 2017 cycle.

E.19 Placed 18 year old applicants from Northern Ireland by ethnic group: 15 days after A level results day

Placed 18 year old applicants: change relative to 2017 cycle totals



Note: The percentage change is not plotted in the above chart for groups with fewer than 30 placed applicants in any one cycle.

E.20 Placed 18 year old applicants from Northern Ireland by ethnic group: 15 days after A level results day

Applicant Status	Ethnic group	2009	2010	2011	2012	2013	2014	2015	2016	2017	2018
Placed	Asian	70	70	70	70	80	80	90	110	120	130
	Black	10	0	10	10	20	20	10	20	20	10
	Mixed	60	50	60	50	60	60	80	70	80	100
	White	9,200	8,700	8,440	8,210	8,620	8,390	8,240	8,360	8,220	7,920
	Other	0	10	10	10	0	10	0	10	10	10

E.21 Placed 18 year old applicants from Northern Ireland by ethnic group: 15 days after A level results day

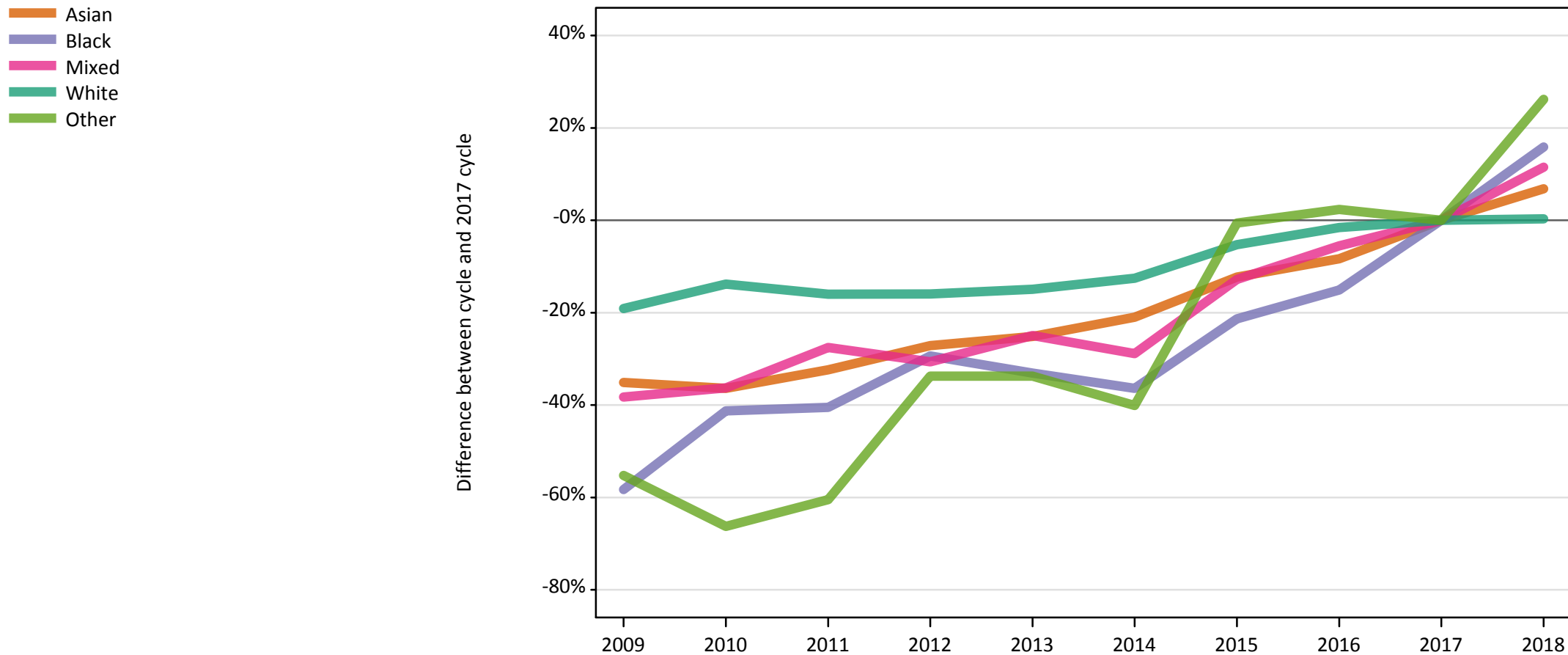
Placed 18 year old applicants: change relative to 2017 cycle totals

Applicant Status	Ethnic group	2009	2010	2011	2012	2013	2014	2015	2016	2017	2018
Placed	Asian	-40%	-43%	-43%	-42%	-32%	-31%	-21%	-8%	0%	12%
	Black	-67%		-50%	-44%	-11%	0%	-39%	0%	0%	-22%
	Mixed	-27%	-35%	-17%	-40%	-23%	-26%	6%	-5%	0%	27%
	White	12%	6%	3%	-0%	5%	2%	0%	2%	0%	-4%
	Other		-40%	-50%	-50%		10%		0%	0%	40%

Note: The percentage change is not recorded in the above table for groups with fewer than 10 placed applicants in that cycle or in the 2017 cycle.

E.22 Placed applicants from Scotland by ethnic group: 15 days after A level results day

Placed applicants: change relative to 2017 cycle totals



Note: The percentage change is not plotted in the above chart for groups with fewer than 30 placed applicants in any one cycle.

E.23 Placed applicants from Scotland by ethnic group: 15 days after A level results day

Applicant Status	Ethnic group	2009	2010	2011	2012	2013	2014	2015	2016	2017	2018
Placed	Asian	990	970	1,030	1,110	1,140	1,200	1,340	1,400	1,520	1,630
	Black	210	300	300	360	340	330	400	430	510	590
	Mixed	380	390	450	430	460	440	540	580	620	690
	White	25,240	26,890	26,200	26,220	26,540	27,280	29,550	30,710	31,200	31,290
	Other	80	60	70	110	110	100	170	180	170	220

E.24 Placed applicants from Scotland by ethnic group: 15 days after A level results day

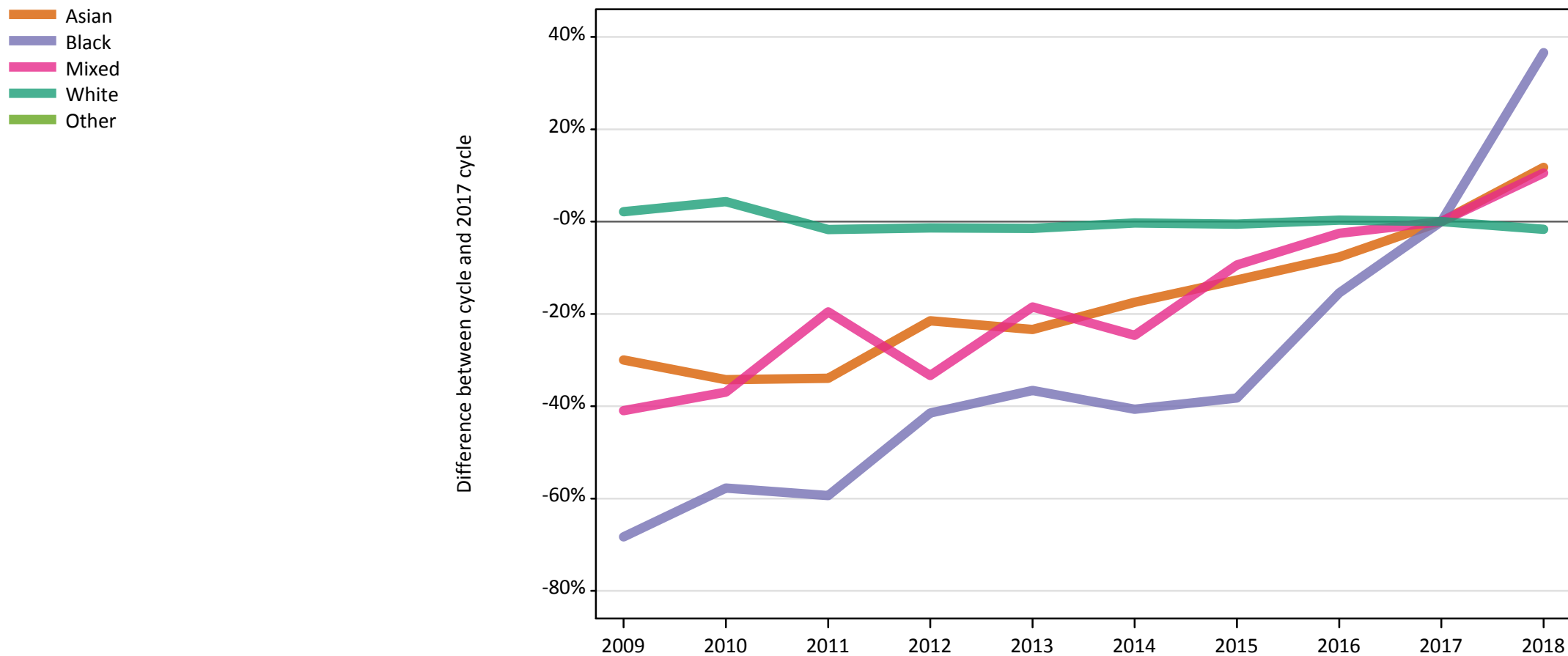
Placed applicants: change relative to 2017 cycle totals

Applicant Status	Ethnic group	2009	2010	2011	2012	2013	2014	2015	2016	2017	2018
Placed	Asian	-35%	-36%	-32%	-27%	-25%	-21%	-12%	-8%	0%	7%
	Black	-58%	-41%	-41%	-29%	-33%	-36%	-21%	-15%	0%	16%
	Mixed	-38%	-36%	-28%	-31%	-25%	-29%	-13%	-6%	0%	12%
	White	-19%	-14%	-16%	-16%	-15%	-13%	-5%	-2%	0%	0%
	Other	-55%	-66%	-60%	-34%	-34%	-40%	-1%	2%	0%	26%

Note: The percentage change is not recorded in the above table for groups with fewer than 10 placed applicants in that cycle or in the 2017 cycle.

E.25 Placed 18 year old applicants from Scotland by ethnic group: 15 days after A level results day

Placed 18 year old applicants: change relative to 2017 cycle totals



Note: The percentage change is not plotted in the above chart for groups with fewer than 30 placed applicants in any one cycle.

E.26 Placed 18 year old applicants from Scotland by ethnic group: 15 days after A level results day

Applicant Status	Ethnic group	2009	2010	2011	2012	2013	2014	2015	2016	2017	2018
Placed	Asian	480	450	450	530	520	560	590	630	680	760
	Black	40	50	50	70	80	70	80	100	120	170
	Mixed	160	170	220	180	230	210	250	270	280	310
	White	13,750	14,040	13,220	13,280	13,260	13,420	13,380	13,500	13,460	13,230
	Other	30	20	30	40	40	40	60	60	60	80

E.27 Placed 18 year old applicants from Scotland by ethnic group: 15 days after A level results day

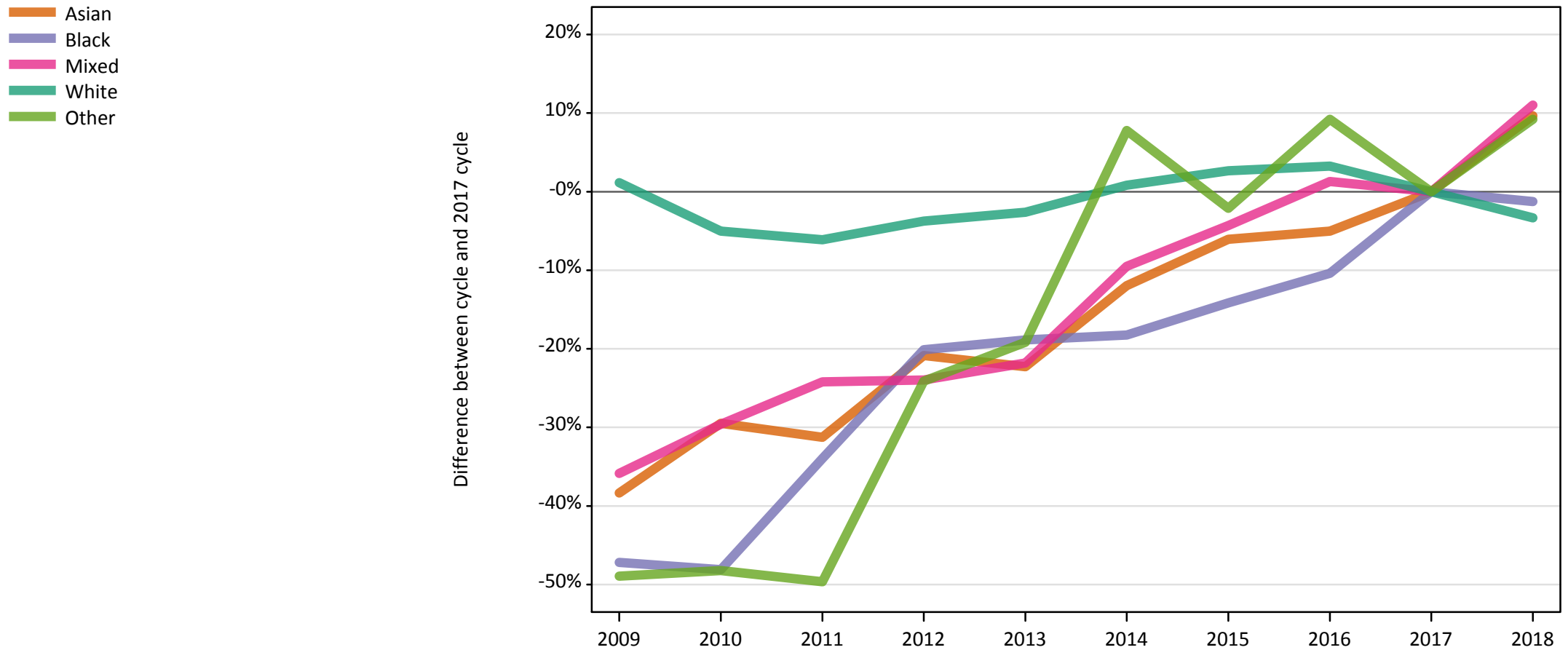
Placed 18 year old applicants: change relative to 2017 cycle totals

Applicant Status	Ethnic group	2009	2010	2011	2012	2013	2014	2015	2016	2017	2018
Placed	Asian	-30%	-34%	-34%	-21%	-23%	-18%	-13%	-8%	0%	12%
	Black	-68%	-58%	-59%	-41%	-37%	-41%	-38%	-15%	0%	37%
	Mixed	-41%	-37%	-20%	-33%	-18%	-25%	-9%	-3%	0%	11%
	White	2%	4%	-2%	-1%	-1%	-0%	-1%	0%	0%	-2%
	Other	-54%	-73%	-49%	-40%	-30%	-43%	-2%	-2%	0%	24%

Note: The percentage change is not recorded in the above table for groups with fewer than 10 placed applicants in that cycle or in the 2017 cycle.

E.28 Placed applicants from Wales by ethnic group: 15 days after A level results day

Placed applicants: change relative to 2017 cycle totals



Note: The percentage change is not plotted in the above chart for groups with fewer than 30 placed applicants in any one cycle.

E.29 Placed applicants from Wales by ethnic group: 15 days after A level results day

Applicant Status	Ethnic group	2009	2010	2011	2012	2013	2014	2015	2016	2017	2018
Placed	Asian	480	550	530	620	600	680	730	740	780	850
	Black	170	170	210	250	260	260	270	290	320	310
	Mixed	300	330	350	350	360	420	440	470	460	510
	White	17,270	16,220	16,030	16,440	16,630	17,220	17,530	17,630	17,080	16,510
	Other	70	70	70	110	110	150	140	150	140	150

E.30 Placed applicants from Wales by ethnic group: 15 days after A level results day

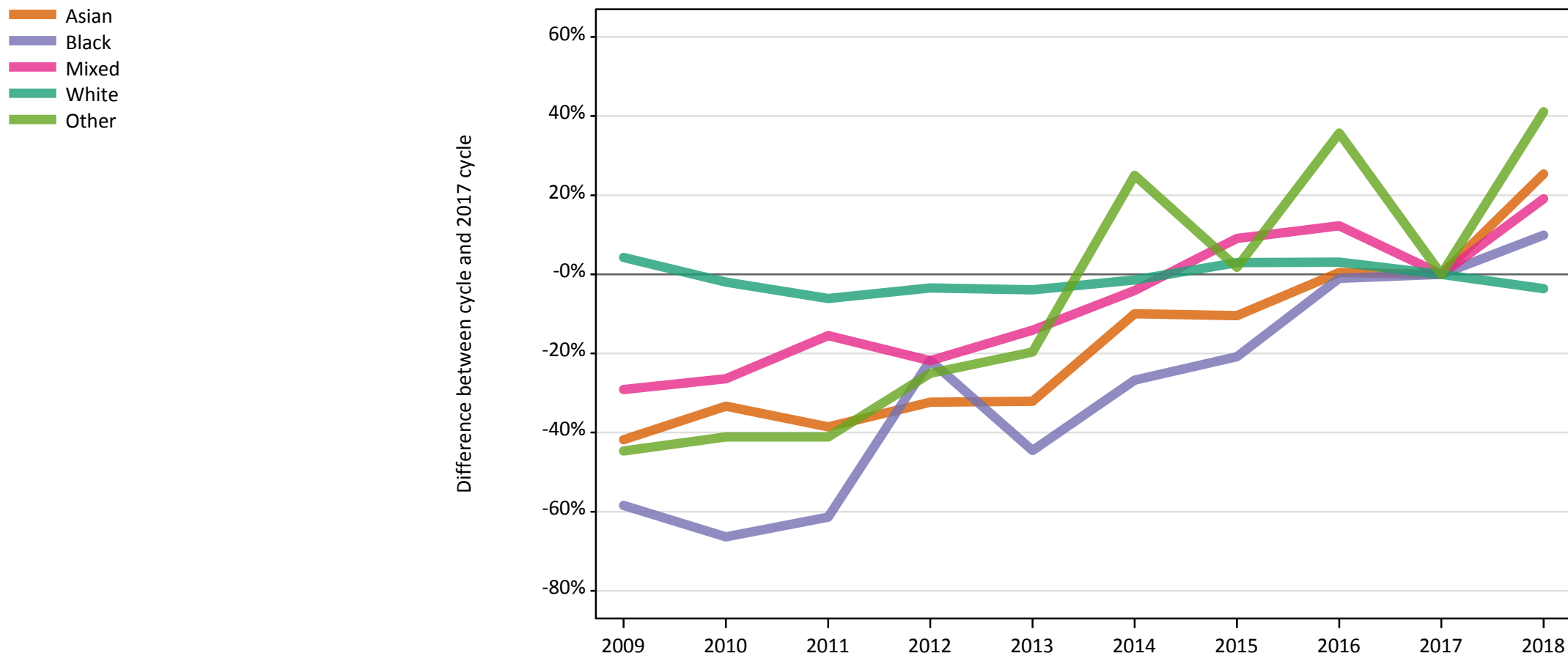
Placed applicants: change relative to 2017 cycle totals

Applicant Status	Ethnic group	2009	2010	2011	2012	2013	2014	2015	2016	2017	2018
Placed	Asian	-38%	-29%	-31%	-21%	-22%	-12%	-6%	-5%	0%	10%
	Black	-47%	-48%	-34%	-20%	-19%	-18%	-14%	-10%	0%	-1%
	Mixed	-36%	-30%	-24%	-24%	-22%	-10%	-4%	1%	0%	11%
	White	1%	-5%	-6%	-4%	-3%	1%	3%	3%	0%	-3%
	Other	-49%	-48%	-50%	-24%	-19%	8%	-2%	9%	0%	9%

Note: The percentage change is not recorded in the above table for groups with fewer than 10 placed applicants in that cycle or in the 2017 cycle.

E.31 Placed 18 year old applicants from Wales by ethnic group: 15 days after A level results day

Placed 18 year old applicants: change relative to 2017 cycle totals



Note: The percentage change is not plotted in the above chart for groups with fewer than 30 placed applicants in any one cycle.

E.32 Placed 18 year old applicants from Wales by ethnic group: 15 days after A level results day

Applicant Status	Ethnic group	2009	2010	2011	2012	2013	2014	2015	2016	2017	2018
Placed	Asian	230	270	250	270	270	360	360	400	400	500
	Black	40	30	40	80	60	70	80	100	100	110
	Mixed	160	160	190	170	190	210	240	250	220	260
	White	9,860	9,280	8,880	9,130	9,090	9,320	9,740	9,750	9,460	9,120
	Other	30	30	30	40	50	70	60	80	60	80

E.33 Placed 18 year old applicants from Wales by ethnic group: 15 days after A level results day

Placed 18 year old applicants: change relative to 2017 cycle totals

Applicant Status	Ethnic group	2009	2010	2011	2012	2013	2014	2015	2016	2017	2018
Placed	Asian	-42%	-33%	-39%	-32%	-32%	-10%	-10%	0%	0%	25%
	Black	-58%	-66%	-61%	-22%	-45%	-27%	-21%	-1%	0%	10%
	Mixed	-29%	-26%	-15%	-22%	-14%	-4%	9%	12%	0%	19%
	White	4%	-2%	-6%	-3%	-4%	-1%	3%	3%	0%	-4%
	Other	-45%	-41%	-41%	-25%	-20%	25%	2%	36%	0%	41%

Note: The percentage change is not recorded in the above table for groups with fewer than 10 placed applicants in that cycle or in the 2017 cycle.