

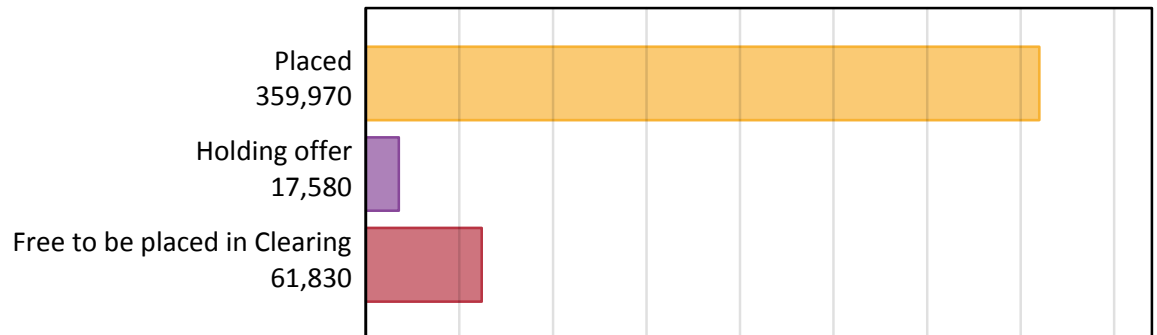
Daily Clearing Analysis: Overview

Analysis at 00:05 on Thursday 31 August 2017 (14 days after A level results day)

A.1 Applicants by type and status from England, 2017 cycle

Applicant type	Status	2017
Main scheme	Placed (Clearing)	33,760
	Placed (Adjustment)	910
	Placed (Firm)	280,130
	Placed (Insurance)	26,840
	Placed (Other)	10,270
	Holding offer	17,580
	Free to be placed in Clearing	61,830
Direct to Clearing	Placed (Direct to Clearing)	8,070
	Other (Direct to Clearing)	6,220
All applicants	Placed	359,970

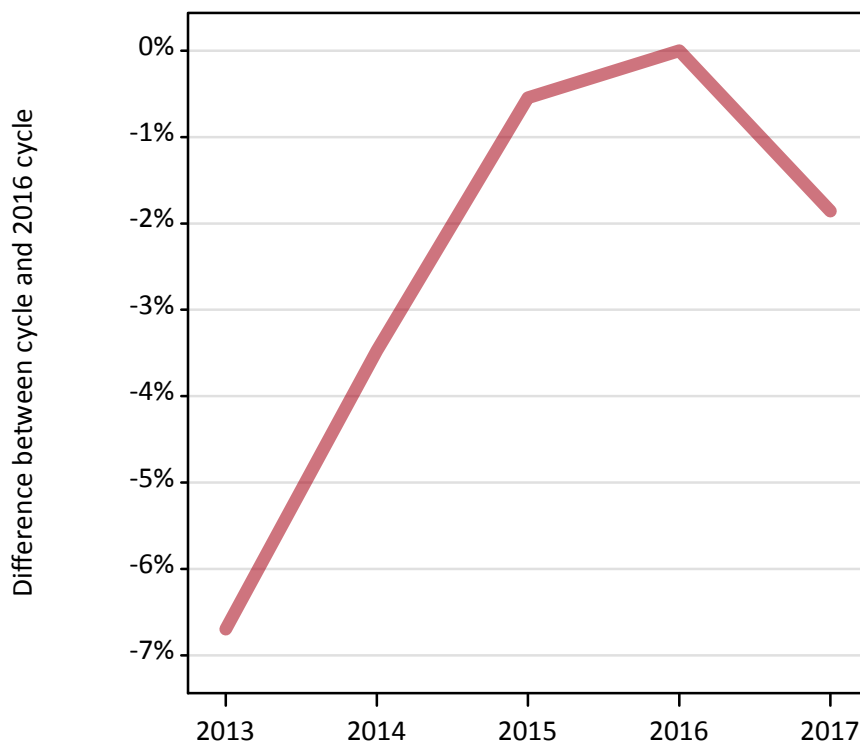
A.2 Summary of applicants who are placed, holding offers or free to be placed in Clearing (England)



A.3 All placed applicants from England: 14 days after A level results day

All placed applicants: difference between cycle and 2016 cycle

Placed



A.4 All placed applicants from England: 14 days after A level results day

All placed applicants: applicants at 14 days after A level results day

Applicant type	Status	2013	2014	2015	2016	2017
All applicants	Placed	342,220	354,040	364,780	366,780	359,970

A.5 All placed applicants from England: 14 days after A level results day

All placed applicants: difference between cycle and 2016 cycle

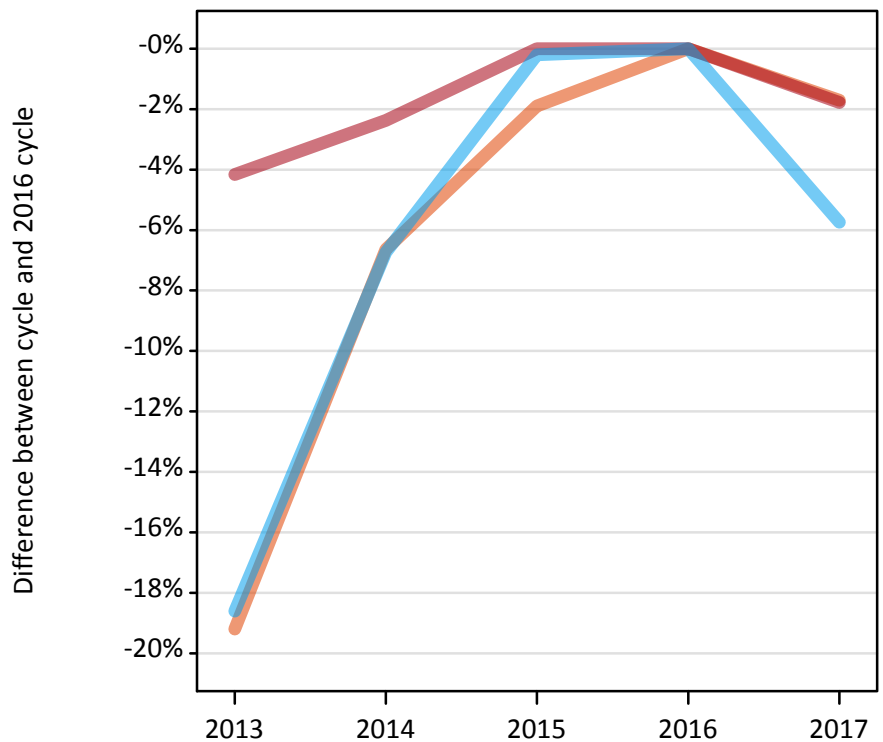
Applicant type	Status	2013	2014	2015	2016	2017
All applicants	Placed	-7%	-3%	-1%	0%	-2%

Note: Percentage changes are not plotted for lines with, on average, fewer than 30 applicants per year. As a result, lines for some, or all, of the states may be missing.

A.6 Placed main scheme applicants from England: 14 days after A level results day

Selected placed routes: difference between cycle and 2016 cycle

- Placed (Clearing)
- Placed (Firm)
- Placed (Insurance)



A.7 Placed main scheme applicants from England: 14 days after A level results day

All Main scheme placed routes (excluding Adjustment): applicants at 14 days after A level results day

Applicant type	Status	2013	2014	2015	2016	2017
Main scheme	Placed (Clearing)	27,760	32,070	33,700	34,350	33,760
	Placed (Firm)	273,330	278,430	285,190	285,200	280,130
	Placed (Insurance)	23,170	26,550	28,410	28,470	26,840
	Placed (Other)	9,820	9,690	9,410	10,390	10,270

A.8 Placed main scheme applicants from England: 14 days after A level results day

Selected placed routes: difference between cycle and 2016 cycle

Applicant type	Status	2013	2014	2015	2016	2017
Main scheme	Placed (Clearing)	-19%	-7%	-2%	0%	-2%
	Placed (Firm)	-4%	-2%	-0%	0%	-2%
	Placed (Insurance)	-19%	-7%	-0%	0%	-6%

Note: Percentage changes are not plotted for lines with, on average, fewer than 30 applicants per year. As a result, lines for some, or all, of the states may be missing.

A.9 Main scheme applicants placed through adjustment: 14 days after A level results day

Placed through adjustment: difference between cycle and 2016 cycle

Placed (Adjustment)



A.10 Main scheme applicants placed through adjustment: 14 days after A level results day

Placed through adjustment: applicants at 14 days after A level results day

Applicant type	Status	2013	2014	2015	2016	2017
Main scheme	Placed (Adjustment)	1,070	1,000	980	760	910

A.11 Main scheme applicants placed through adjustment: 14 days after A level results day

Placed through adjustment: difference between cycle and 2016 cycle

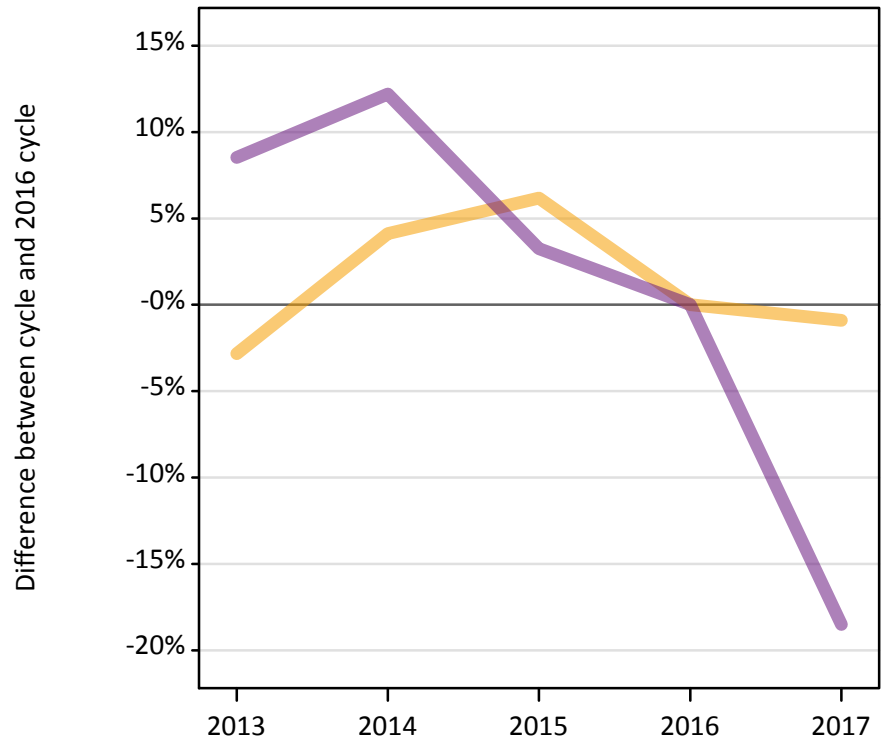
Applicant type	Status	2013	2014	2015	2016	2017
Main scheme	Placed (Adjustment)	41%	31%	29%	0%	19%

Note: Percentage changes are not plotted for lines with, on average, fewer than 30 applicants per year. As a result, lines for some, or all, of the states may be missing.

A.12 Main scheme applicants not currently placed from England: 14 days after A level results day

Applicants in unplaced states: difference between cycle and 2016 cycle

— Holding offer
— Free to be placed in Clearing



A.13 Main scheme applicants not currently placed from England: 14 days after A level results day

Applicants in unplaced states: applicants at 14 days after A level results day

Applicant type	Status	2013	2014	2015	2016	2017
Main scheme	Holding offer	17,240	18,470	18,840	17,740	17,580
	Free to be placed in Clearing	82,330	85,120	78,320	75,860	61,830

A.14 Main scheme applicants not currently placed from England: 14 days after A level results day

Applicants in unplaced states: difference between cycle and 2016 cycle

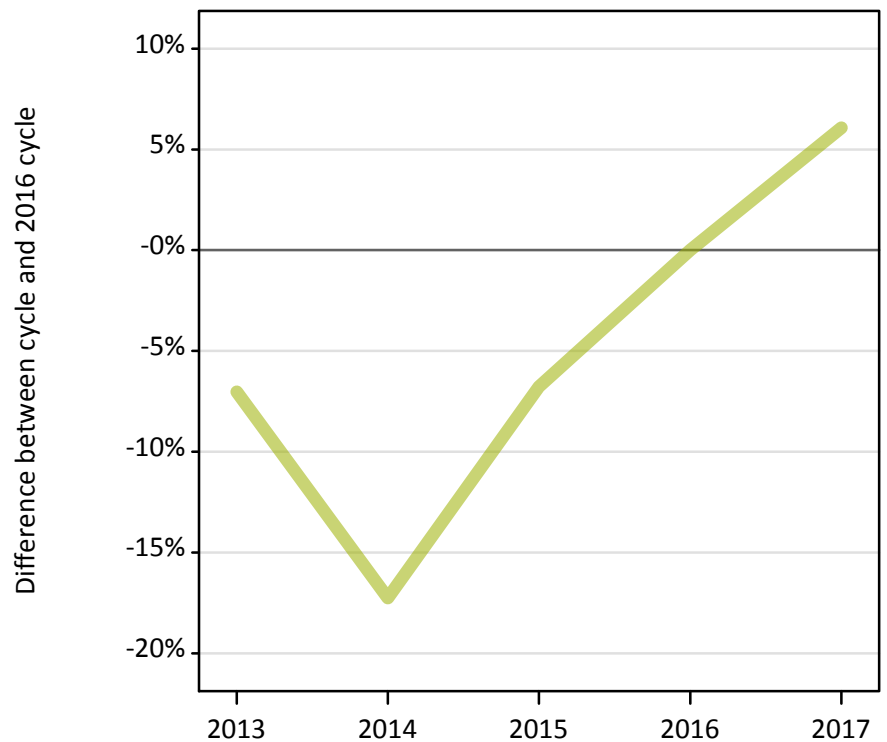
Applicant type	Status	2013	2014	2015	2016	2017
Main scheme	Holding offer	-3%	4%	6%	0%	-1%
	Free to be placed in Clearing	9%	12%	3%	0%	-18%

Note: Percentage changes are not plotted for lines with, on average, fewer than 30 applicants per year. As a result, lines for some, or all, of the states may be missing.

A.15 Direct to Clearing applicants from England: 14 days after A level results day

Placed (Direct to Clearing): difference between cycle and 2016 cycle

Placed (Direct to Clearing)



A.16 Direct to Clearing applicants from England: 14 days after A level results day

Direct to Clearing 14 days after A level results day

Applicant type	Status	2013	2014	2015	2016	2017
Direct to Clearing	Placed (Direct to Clearing)	7,080	6,300	7,100	7,610	8,070
	Other (Direct to Clearing)	6,290	5,650	6,200	6,010	6,220

A.17 Direct to Clearing applicants from England: 14 days after A level results day

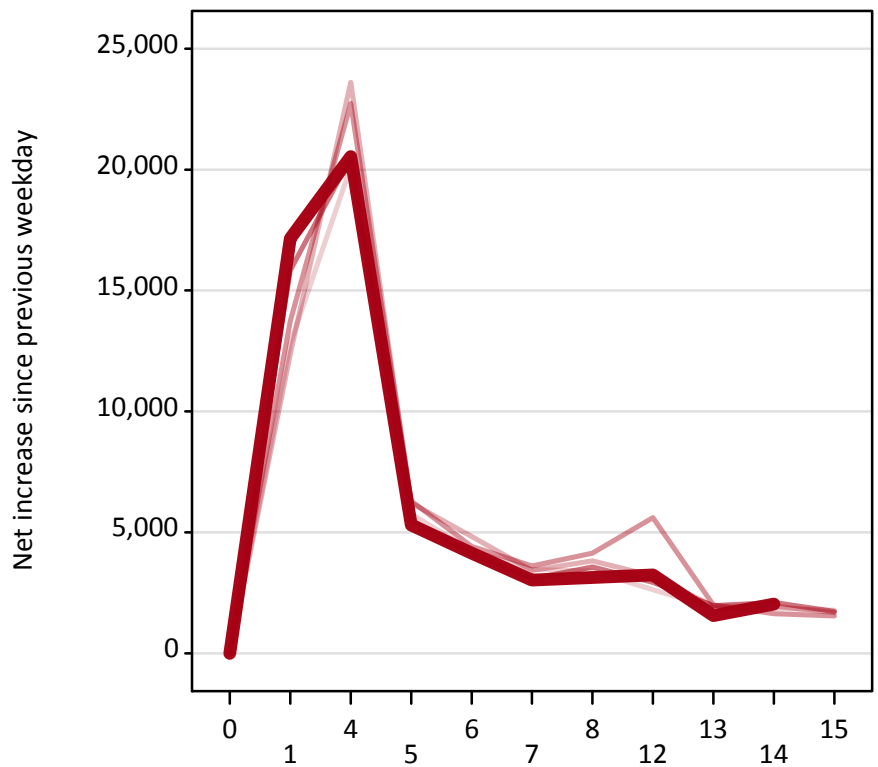
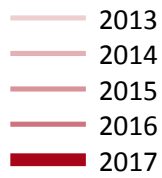
Placed (Direct to Clearing): difference between cycle and 2016 cycle

Applicant type	Status	2013	2014	2015	2016	2017
Direct to Clearing	Placed (Direct to Clearing)	-7%	-17%	-7%	0%	6%

Note: Percentage changes are not plotted for lines with, on average, fewer than 30 applicants per year. As a result, lines for some, or all, of the states may be missing.

A.18 All Placed: Daily net change (from England)

Net increase since previous weekday (2017 cycle up to 14 days after A level results day)



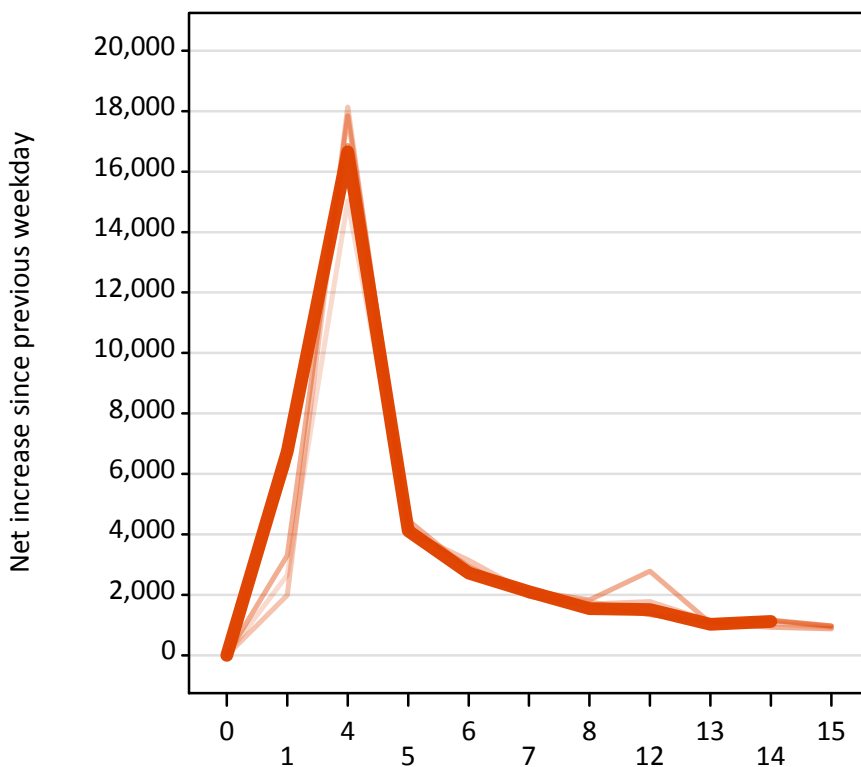
A.19 All Placed: Daily net change (from England)

Net increase since previous weekday (2017 cycle up to 14 days after A level results day)

Applicant status, days since A level results day		2013	2014	2015	2016	2017
All Placed	0	0	0	0	0	0
	1	12,810	12,380	13,730	15,840	17,150
	4	20,120	23,620	22,730	20,500	20,540
	5	5,750	6,220	6,300	5,500	5,300
	6	4,240	4,830	4,410	4,120	4,140
	7	3,470	3,420	3,600	3,080	3,030
	8	3,400	3,830	4,140	3,570	3,130
	12	2,630	3,200	5,610	2,940	3,240
	13	1,880	1,940	2,000	1,970	1,560
	14	1,860	1,960	1,640	2,100	2,030
	15	1,780	1,680	1,540	1,730	

A.20 Placed through Clearing only: Daily net change (from England)

Net increase since previous weekday (2017 cycle up to 14 days after A level results day)



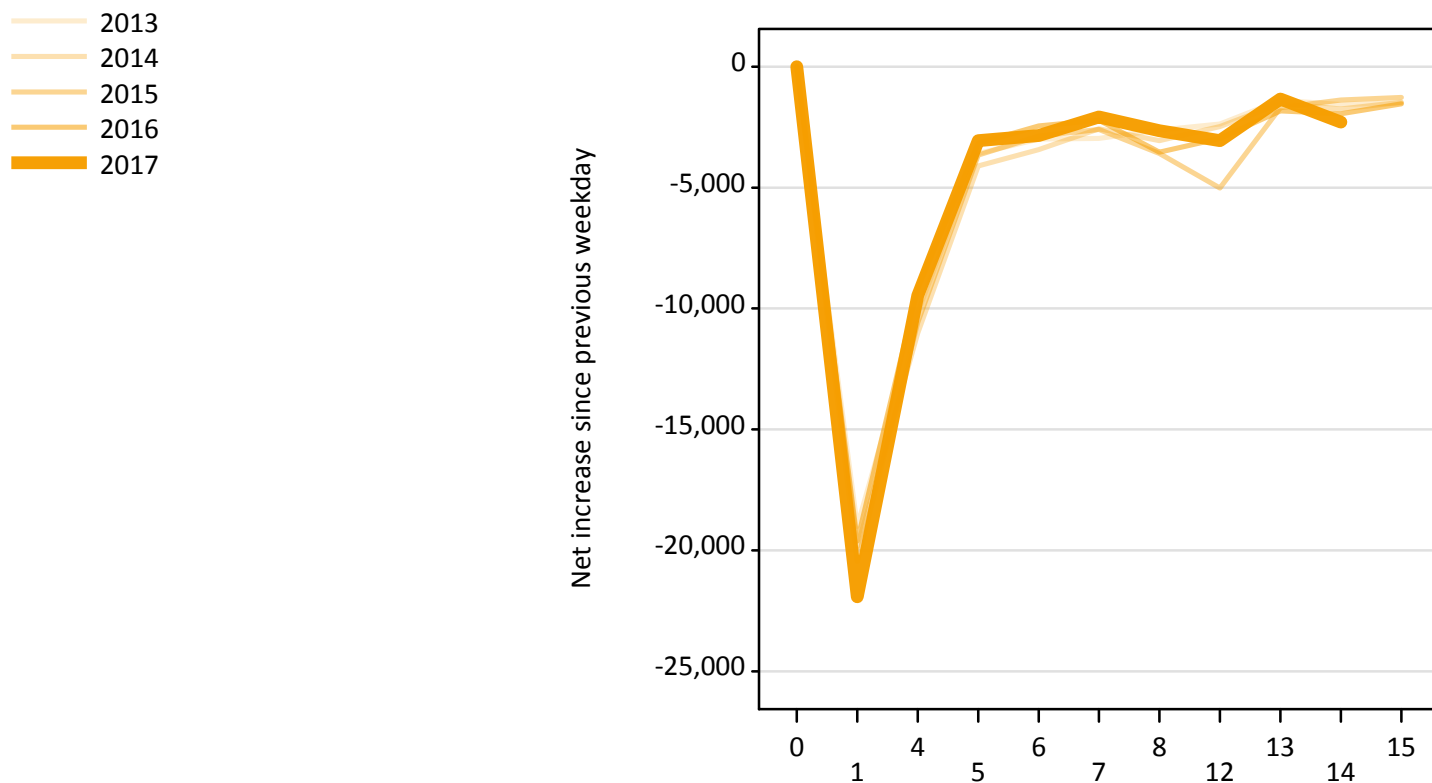
A.21 Placed through Clearing only: Daily net change (from England)

Net increase since previous weekday (2017 cycle up to 14 days after A level results day)

Applicant status, days since A level results day		2013	2014	2015	2016	2017
Placed through Clearing only	0	0	0	0	0	0
	1	2,650	1,990	3,300	6,260	6,740
	4	15,030	18,140	17,850	16,870	16,660
	5	4,070	4,080	4,470	4,190	4,120
	6	2,690	3,140	2,830	2,940	2,720
	7	1,980	2,060	2,140	1,950	2,100
	8	1,780	1,690	1,830	1,590	1,540
	12	1,340	1,780	2,790	1,360	1,510
	13	1,090	1,130	1,060	1,080	1,020
	14	1,050	1,130	930	1,160	1,120
	15	910	960	880	970	

A.22 Holding Offer: Daily net change (from England)

Net increase since previous weekday (2017 cycle up to 14 days after A level results day)



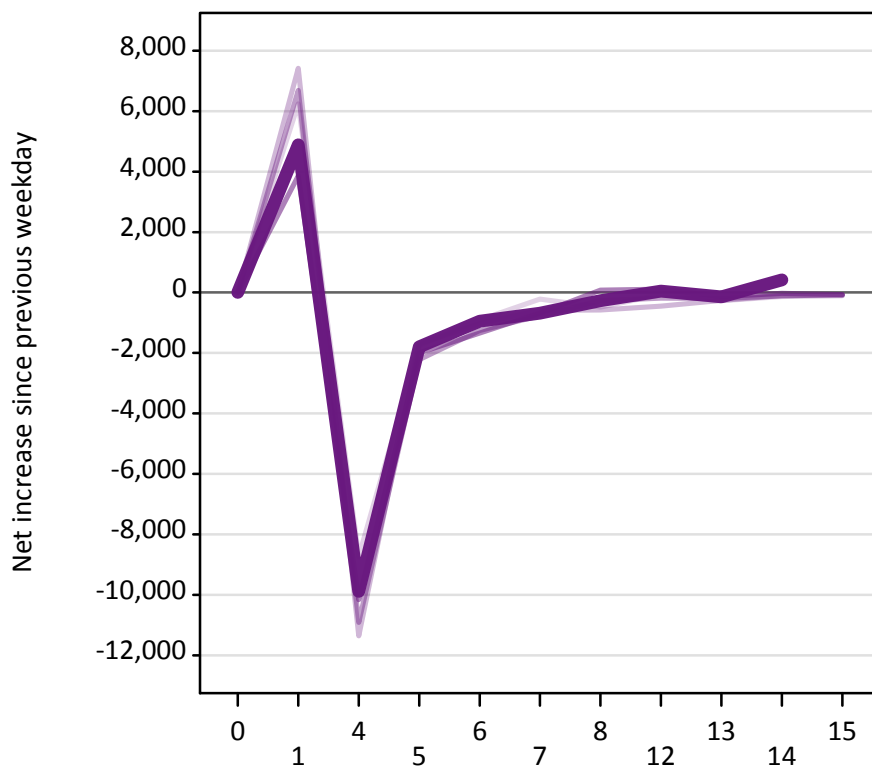
A.23 Holding Offer: Daily net change (from England)

Net increase since previous weekday (2017 cycle up to 14 days after A level results day)

Applicant status, days since A level results day		2013	2014	2015	2016	2017
Holding Offer	0	0	0	0	0	0
	1	-19,020	-19,850	-20,460	-19,620	-21,920
	4	-10,150	-11,010	-10,580	-9,160	-9,470
	5	-3,590	-4,110	-3,660	-3,160	-3,060
	6	-3,000	-3,430	-2,870	-2,450	-2,840
	7	-2,970	-2,570	-2,590	-2,210	-2,080
	8	-2,620	-3,070	-3,590	-3,540	-2,650
	12	-2,360	-2,470	-5,010	-2,970	-3,060
	13	-1,390	-1,530	-1,690	-1,830	-1,340
	14	-1,570	-1,760	-1,370	-1,950	-2,290
	15	-1,500	-1,470	-1,280	-1,530	

A.24 Free to be placed in Clearing: Daily net change (from England)

Net increase since previous weekday (2017 cycle up to 14 days after A level results day)



A.25 Free to be placed in Clearing: Daily net change (from England)

Net increase since previous weekday (2017 cycle up to 14 days after A level results day)

Applicant status, days since A level results day		2013	2014	2015	2016	2017
Free to be placed in Clearing	0	0	0	0	0	0
	1	6,240	7,420	6,690	3,860	4,890
	4	-8,730	-11,360	-10,920	-10,160	-9,880
	5	-1,750	-1,700	-2,220	-2,000	-1,800
	6	-910	-1,020	-1,260	-1,340	-950
	7	-220	-590	-770	-680	-690
	8	-480	-580	-270	80	-270
	12	-70	-450	-190	110	50
	13	-270	-260	-200	-130	-140
	14	-130	-100	-120	-20	420
	15	-100	-100	-70	-70	-70