

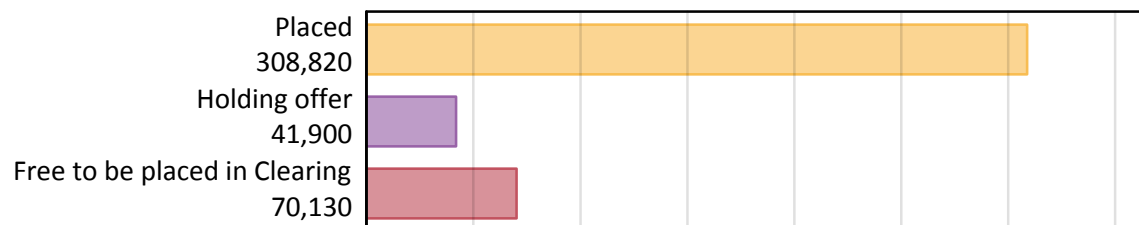
Daily Clearing Analysis: Overview

Analysis at 00:05 on Friday 17 August 2018 (1 day after A level results day)

A.1 Applicants by type and status from England, 2018 cycle

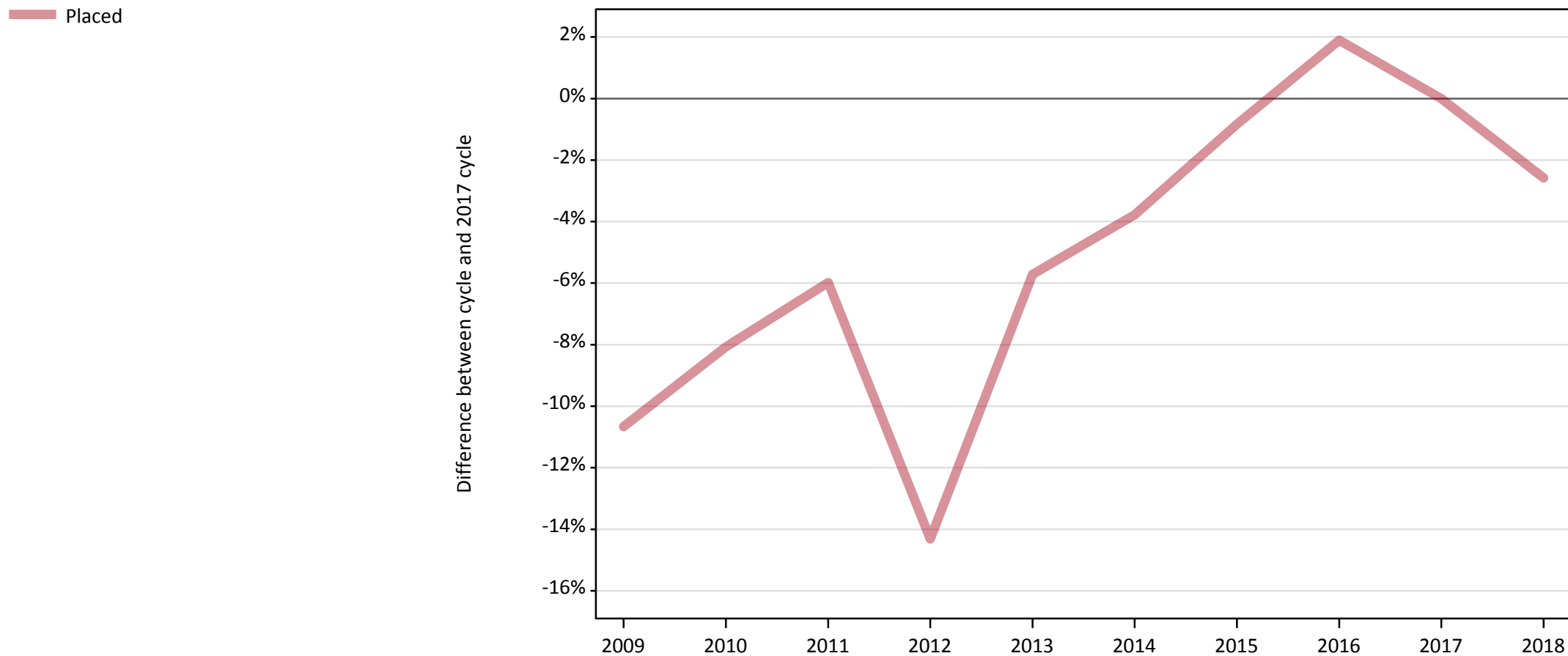
Applicant type	Status	2018
Main scheme	Placed (Clearing)	8,070
	Placed (Adjustment)	310
	Placed (Firm)	264,660
	Placed (Insurance)	23,670
	Placed (Other)	8,830
	Holding offer	41,900
	Free to be placed in Clearing	70,130
Direct to Clearing	Placed (Direct to Clearing)	3,290
	Other (Direct to Clearing)	6,820
All applicants	Placed	308,820

A.2 Summary of applicants who are placed, holding offers or free to be placed in Clearing (England)



A.3 All placed applicants from England: 1 day after A level results day

All placed applicants: difference between cycle and 2017 cycle



Note: The percentage change is not plotted in the above chart for groups with fewer than 30 placed applicants in any one cycle.

A.4 All placed applicants from England: 1 day after A level results day

All placed applicants: applicants at 1 day after A level results day

Applicant type	Status	2009	2010	2011	2012	2013	2014	2015	2016	2017	2018
All applicants	Placed	283,210	291,410	298,040	271,620	298,880	305,030	314,360	323,010	317,000	308,820

A.5 All placed applicants from England: 1 day after A level results day

All placed applicants: difference between cycle and 2017 cycle

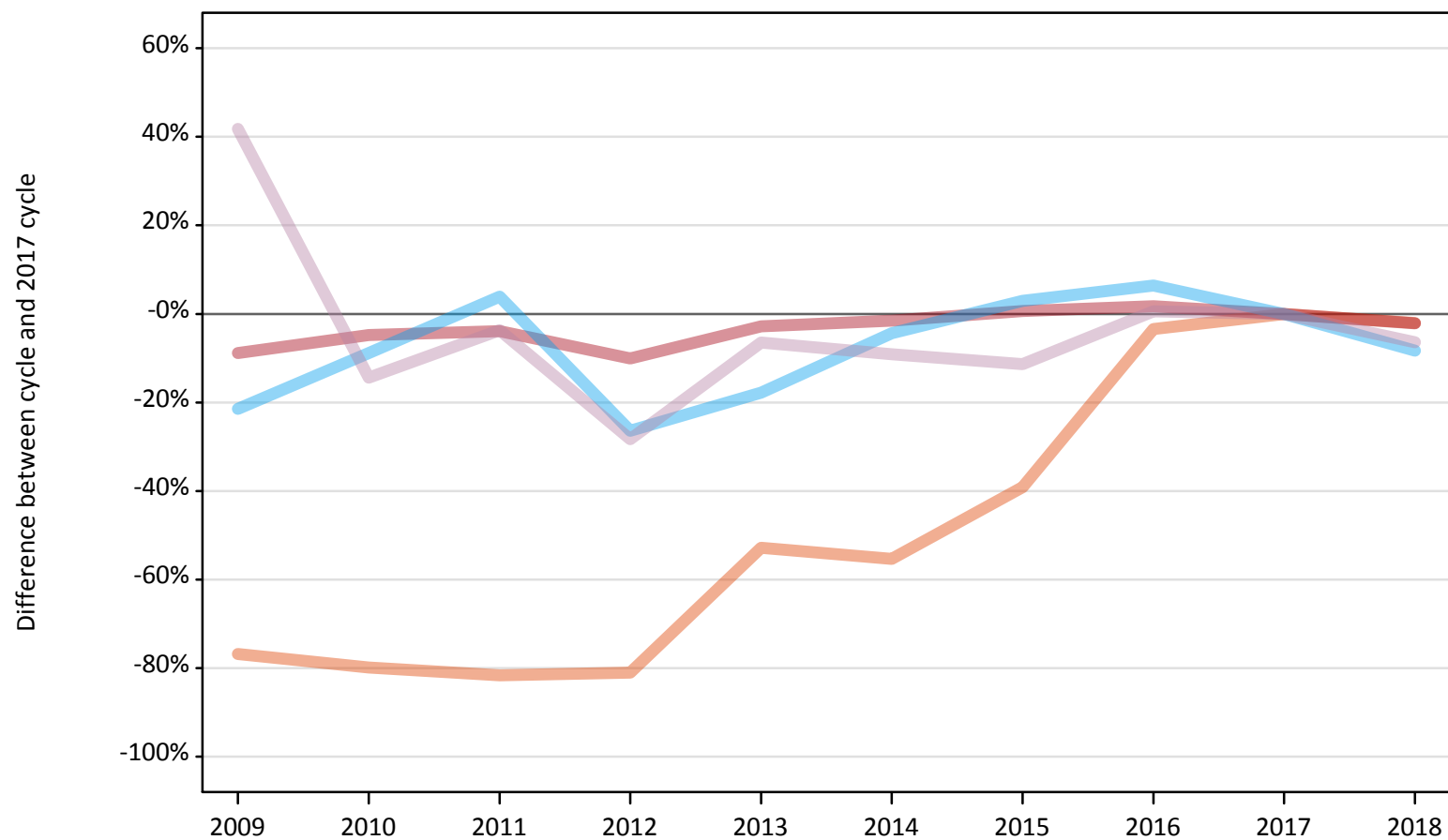
Applicant type	Status	2009	2010	2011	2012	2013	2014	2015	2016	2017	2018
All applicants	Placed	-11%	-8%	-6%	-14%	-6%	-4%	-1%	2%	0%	-3%

Note: The percentage change is not recorded in the above table for groups with fewer than 10 placed applicants in that cycle or in the 2017 cycle.

A.6 Placed main scheme applicants from England: 1 day after A level results day

All Main scheme placed routes (excluding Adjustment): difference between cycle and 2017 cycle

- Placed (Clearing)
- Placed (Firm)
- Placed (Insurance)
- Placed (Other)



Note: The percentage change is not plotted in the above chart for groups with fewer than 30 placed applicants in any one cycle.

A.7 Placed main scheme applicants from England: 1 day after A level results day

All Main scheme placed routes (excluding Adjustment): applicants at 1 day after A level results day

Applicant type	Status	2009	2010	2011	2012	2013	2014	2015	2016	2017	2018
Main scheme	Placed (Clearing)	1,910	1,660	1,520	1,560	3,890	3,680	5,020	7,960	8,240	8,070
	Placed (Firm)	246,470	257,380	259,820	243,180	262,770	266,290	272,170	274,980	270,380	264,660
	Placed (Insurance)	20,280	23,530	26,830	19,000	21,220	24,690	26,580	27,470	25,810	23,670
	Placed (Other)	13,370	8,070	9,080	6,760	8,820	8,570	8,360	9,490	9,430	8,830

A.8 Placed main scheme applicants from England: 1 day after A level results day

All Main scheme placed routes (excluding Adjustment): difference between cycle and 2017 cycle

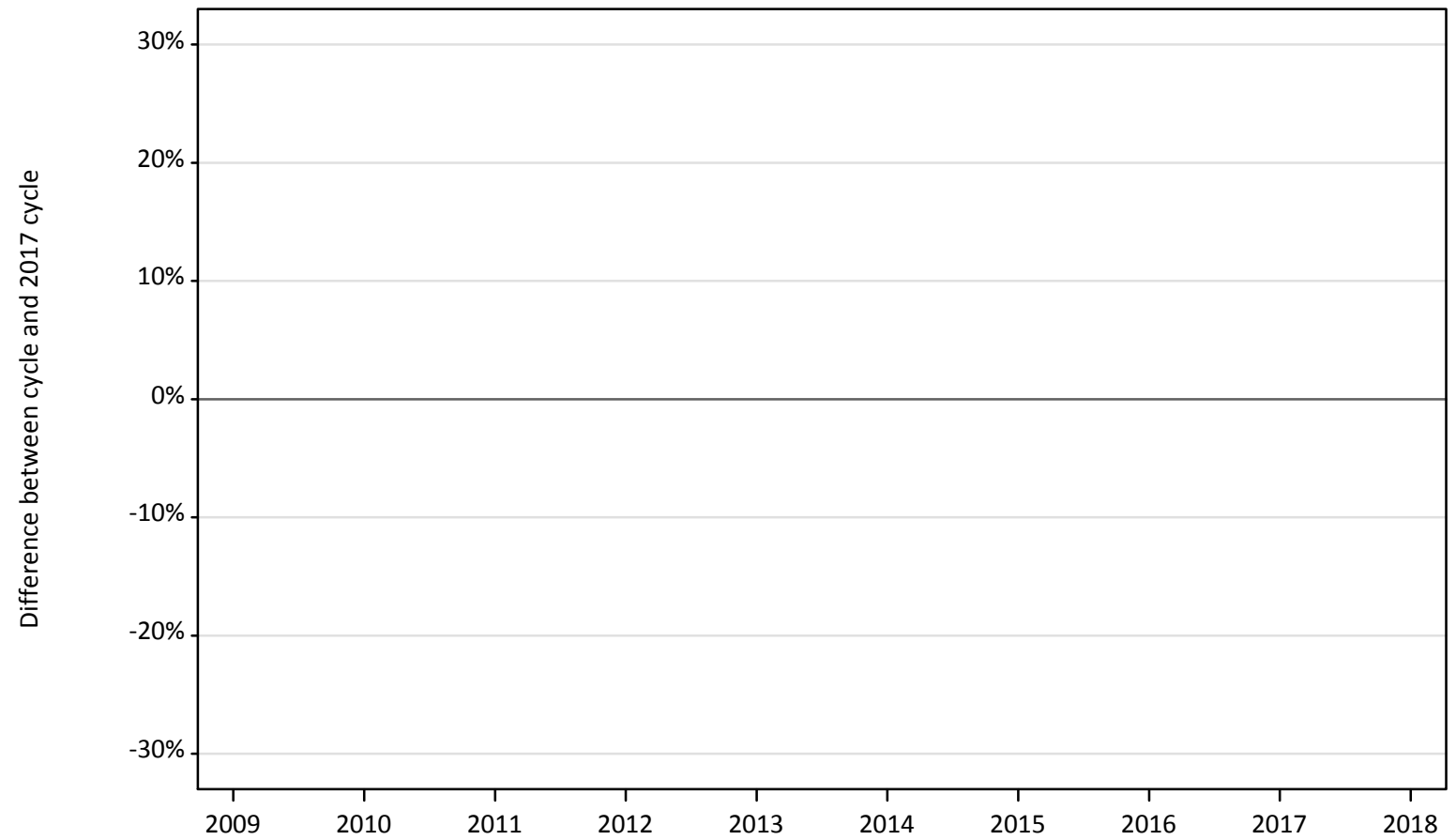
Applicant type	Status	2009	2010	2011	2012	2013	2014	2015	2016	2017	2018
Main scheme	Placed (Clearing)	-77%	-80%	-82%	-81%	-53%	-55%	-39%	-3%	0%	-2%
	Placed (Firm)	-9%	-5%	-4%	-10%	-3%	-2%	1%	2%	0%	-2%
	Placed (Insurance)	-21%	-9%	4%	-26%	-18%	-4%	3%	6%	0%	-8%
	Placed (Other)	42%	-14%	-4%	-28%	-6%	-9%	-11%	1%	0%	-6%

Note: The percentage change is not recorded in the above table for groups with fewer than 10 placed applicants in that cycle or in the 2017 cycle.

A.9 Main scheme applicants placed through adjustment: 1 day after A level results day

Placed through adjustment: difference between cycle and 2017 cycle

Placed (Adjustment)



Note: The percentage change is not plotted in the above chart for groups with fewer than 30 placed applicants in any one cycle.

A.10 Main scheme applicants placed through adjustment: 1 day after A level results day

Placed through adjustment: applicants at 1 day after A level results day

Applicant type	Status	2009	2010	2011	2012	2013	2014	2015	2016	2017	2018
Main scheme	Placed (Adjustment)	40	20	50	120	270	260	340	250	340	310

A.11 Main scheme applicants placed through adjustment: 1 day after A level results day

Placed through adjustment: difference between cycle and 2017 cycle

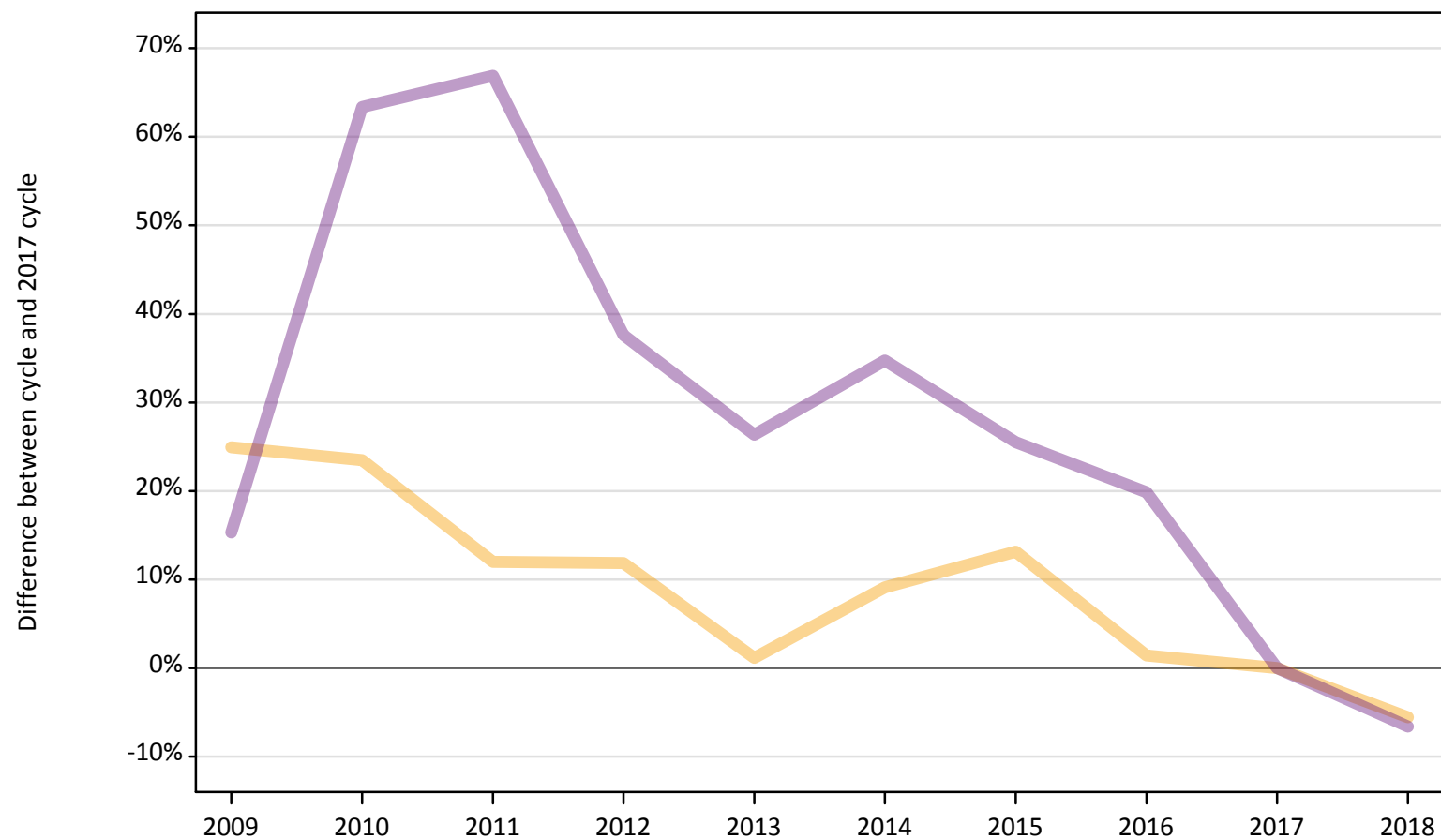
Applicant type	Status	2009	2010	2011	2012	2013	2014	2015	2016	2017	2018
Main scheme	Placed (Adjustment)	-88%	-95%	-85%	-65%	-20%	-24%	0%	-25%	0%	-9%

Note: The percentage change is not recorded in the above table for groups with fewer than 10 placed applicants in that cycle or in the 2017 cycle.

A.12 Main scheme applicants not currently placed from England: 1 day after A level results day

Applicants in unplaced states: difference between cycle and 2017 cycle

— Holding offer
— Free to be placed in Clearing



Note: The percentage change is not plotted in the above chart for groups with fewer than 30 unplaced applicants in any one cycle.

A.13 Main scheme applicants not currently placed from England: 1 day after A level results day

Applicants in unplaced states: applicants at 1 day after A level results day

Applicant type	Status	2009	2010	2011	2012	2013	2014	2015	2016	2017	2018
Main scheme	Holding offer	55,440	54,790	49,690	49,640	44,880	48,410	50,200	45,000	44,370	41,900
	Free to be placed in Clearing	86,610	122,670	125,320	103,340	94,890	101,180	94,250	90,000	75,100	70,130

A.14 Main scheme applicants not currently placed from England: 1 day after A level results day

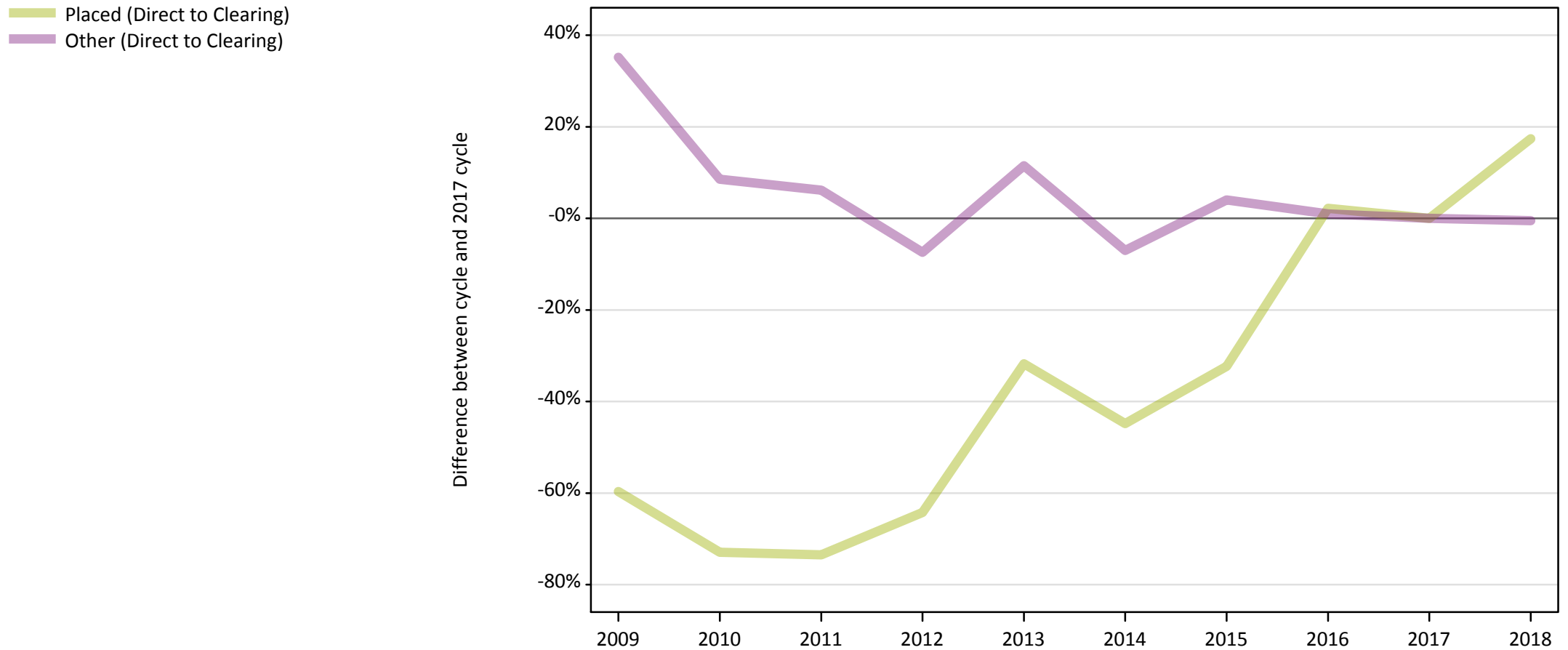
Applicants in unplaced states: difference between cycle and 2017 cycle

Applicant type	Status	2009	2010	2011	2012	2013	2014	2015	2016	2017	2018
Main scheme	Holding offer	25%	23%	12%	12%	1%	9%	13%	1%	0%	-6%
	Free to be placed in Clearing	15%	63%	67%	38%	26%	35%	26%	20%	0%	-7%

Note: The percentage change is not recorded in the above table for groups with fewer than 10 unplaced applicants in that cycle or in the 2017 cycle.

A.15 Direct to Clearing applicants from England: 1 day after A level results day

Direct to Clearing: difference between cycle and 2017 cycle



Note: The percentage change is not plotted in the above chart for groups with fewer than 30 placed applicants in any one cycle.

A.16 Direct to Clearing applicants from England: 1 day after A level results day

Direct to Clearing 1 day after A level results day

Applicant type	Status	2009	2010	2011	2012	2013	2014	2015	2016	2017	2018
Direct to Clearing	Placed (Direct to Clearing)	1,130	760	740	1,000	1,910	1,540	1,900	2,860	2,800	3,290
	Other (Direct to Clearing)	9,270	7,440	7,280	6,350	7,640	6,370	7,130	6,920	6,850	6,820

A.17 Direct to Clearing applicants from England: 1 day after A level results day

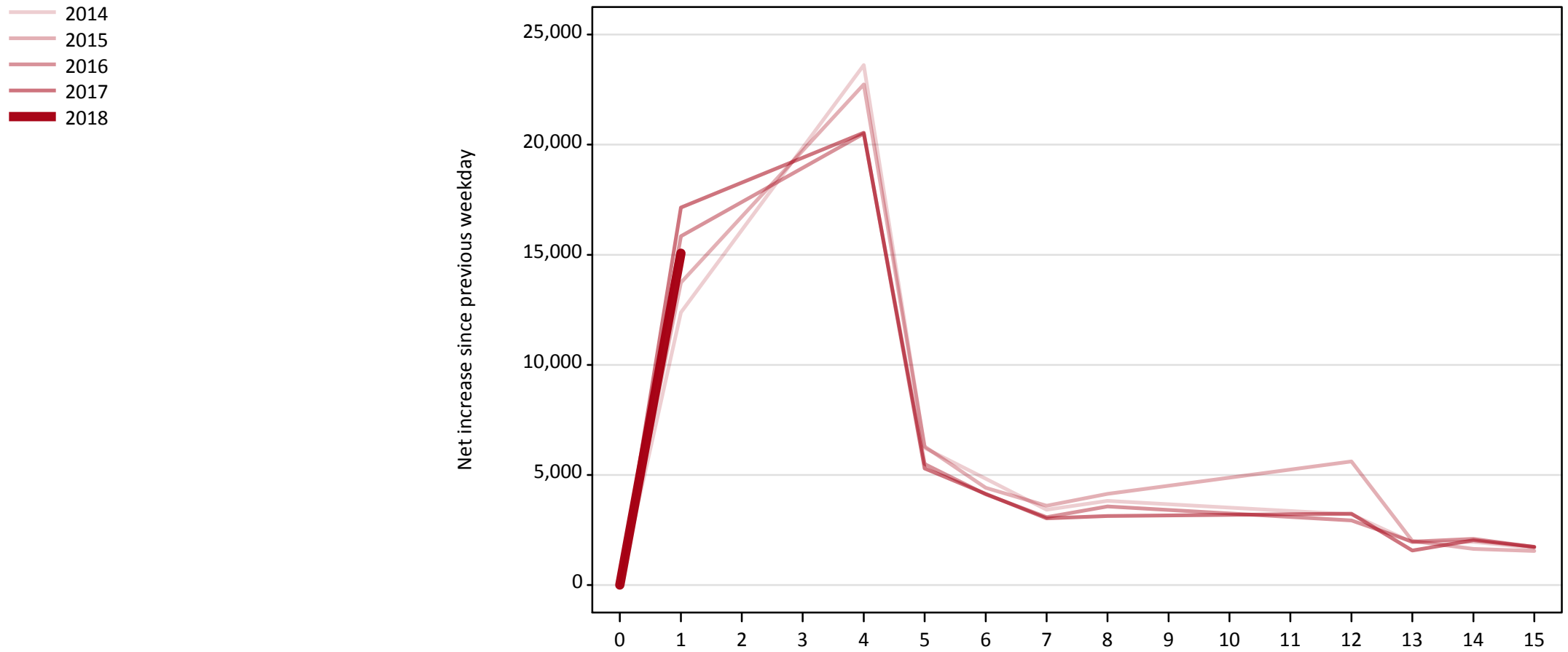
Direct to Clearing: difference between cycle and 2017 cycle

Applicant type	Status	2009	2010	2011	2012	2013	2014	2015	2016	2017	2018
Direct to Clearing	Placed (Direct to Clearing)	-60%	-73%	-73%	-64%	-32%	-45%	-32%	2%	0%	17%
	Other (Direct to Clearing)	35%	9%	6%	-7%	11%	-7%	4%	1%	0%	-0%

Note: The percentage change is not recorded in the above table for groups with fewer than 10 placed applicants in that cycle or in the 2017 cycle.

A.18 All Placed: Daily net change (from England)

Net increase since previous weekday (2018 cycle up to 1 day after A level results day)

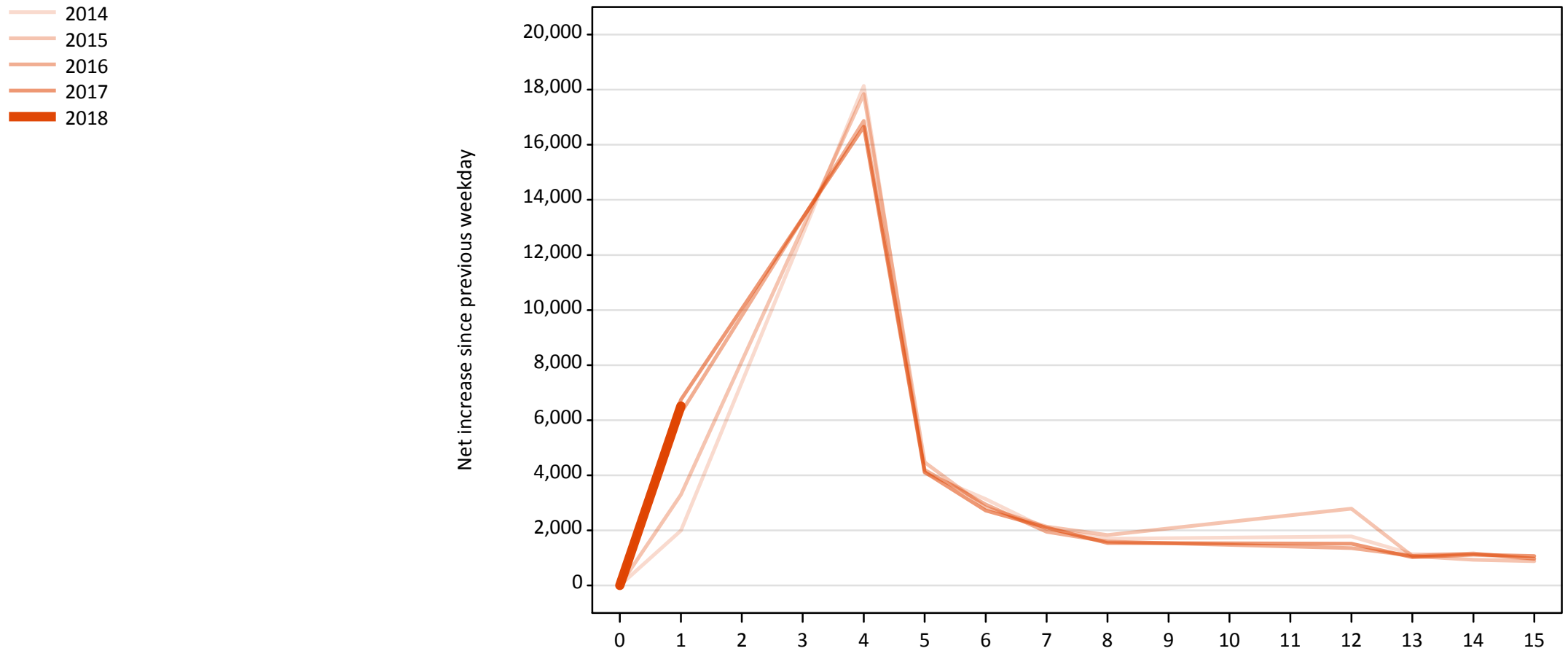


A.19 All Placed: Daily net change (from England)

Net increase since previous weekday (2018 cycle up to 1 day after A level results day)

Applicant status, days since A level results day	2014	2015	2016	2017	2018	
All Placed	0	0	0	0	0	
	1	12,380	13,730	15,840	17,150	15,070
	4	23,620	22,730	20,500	20,540	
	5	6,220	6,300	5,500	5,300	
	6	4,830	4,410	4,120	4,140	
	7	3,420	3,600	3,080	3,030	
	8	3,830	4,140	3,570	3,130	
	12	3,200	5,610	2,940	3,240	
	13	1,940	2,000	1,970	1,560	
	14	1,960	1,640	2,100	2,030	
	15	1,680	1,540	1,730	1,740	

A.20 Placed through Clearing only: Daily net change (from England)
Net increase since previous weekday (2018 cycle up to 1 day after A level results day)



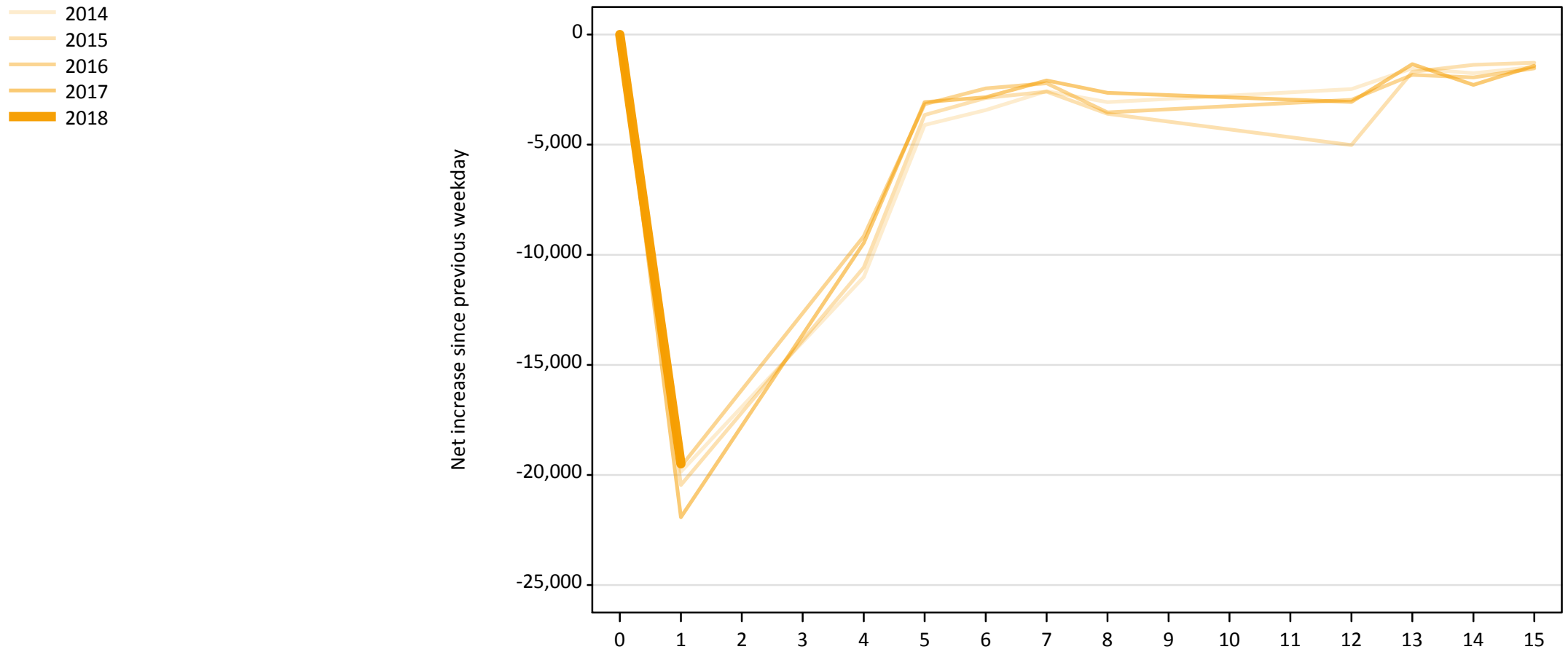
A.21 Placed through Clearing only: Daily net change (from England)

Net increase since previous weekday (2018 cycle up to 1 day after A level results day)

Applicant status, days since A level results day		2014	2015	2016	2017	2018
Placed through Clearing only	0	0	0	0	0	0
	1	1,990	3,300	6,260	6,740	6,510
	4	18,140	17,850	16,870	16,660	
	5	4,080	4,470	4,190	4,120	
	6	3,140	2,830	2,940	2,720	
	7	2,060	2,140	1,950	2,100	
	8	1,690	1,830	1,590	1,540	
	12	1,780	2,790	1,360	1,510	
	13	1,130	1,060	1,080	1,020	
	14	1,130	930	1,160	1,120	
	15	960	880	970	1,060	

A.22 Holding Offer: Daily net change (from England)

Net increase since previous weekday (2018 cycle up to 1 day after A level results day)



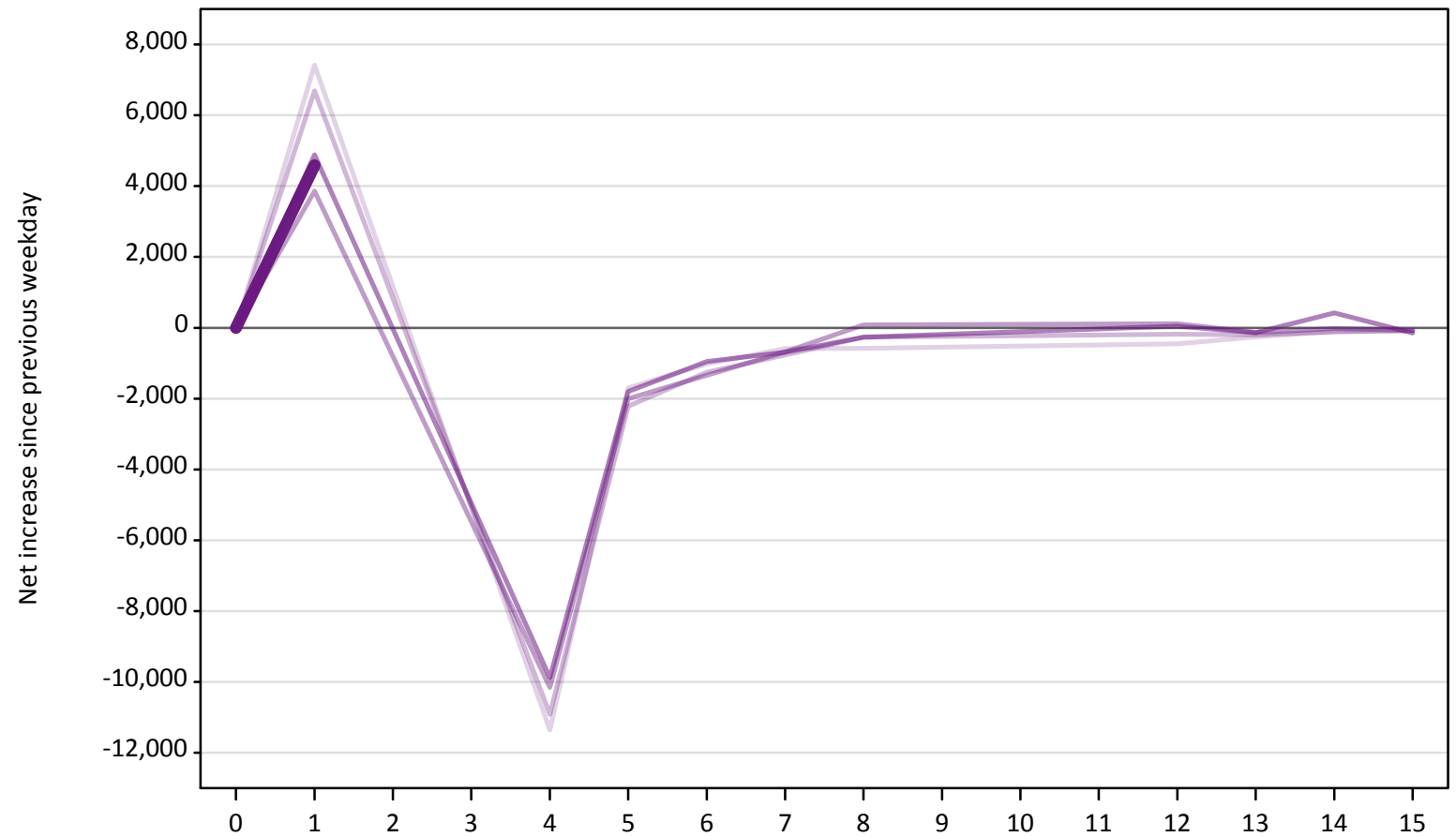
A.23 Holding Offer: Daily net change (from England)

Net increase since previous weekday (2018 cycle up to 1 day after A level results day)

Applicant status, days since A level results day	2014	2015	2016	2017	2018	
Holding Offer	0	0	0	0	0	
	1	-19,850	-20,460	-19,620	-21,920	-19,500
	4	-11,010	-10,580	-9,160	-9,470	
	5	-4,110	-3,660	-3,160	-3,060	
	6	-3,430	-2,870	-2,450	-2,840	
	7	-2,570	-2,590	-2,210	-2,080	
	8	-3,070	-3,590	-3,540	-2,650	
	12	-2,470	-5,010	-2,970	-3,060	
	13	-1,530	-1,690	-1,830	-1,340	
	14	-1,760	-1,370	-1,950	-2,290	
	15	-1,470	-1,280	-1,530	-1,420	

A.24 Free to be placed in Clearing: Daily net change (from England)
Net increase since previous weekday (2018 cycle up to 1 day after A level results day)

- 2014
- 2015
- 2016
- 2017
- 2018



A.25 Free to be placed in Clearing: Daily net change (from England)

Net increase since previous weekday (2018 cycle up to 1 day after A level results day)

Applicant status, days since A level results day		2014	2015	2016	2017	2018
Free to be placed in Clearing	0	0	0	0	0	0
	1	7,420	6,690	3,860	4,890	4,590
	4	-11,360	-10,920	-10,160	-9,880	
	5	-1,700	-2,220	-2,000	-1,800	
	6	-1,020	-1,260	-1,340	-950	
	7	-590	-770	-680	-690	
	8	-580	-270	80	-270	
	12	-450	-190	110	50	
	13	-260	-200	-130	-140	
	14	-100	-120	-20	420	
	15	-100	-70	-70	-150	