

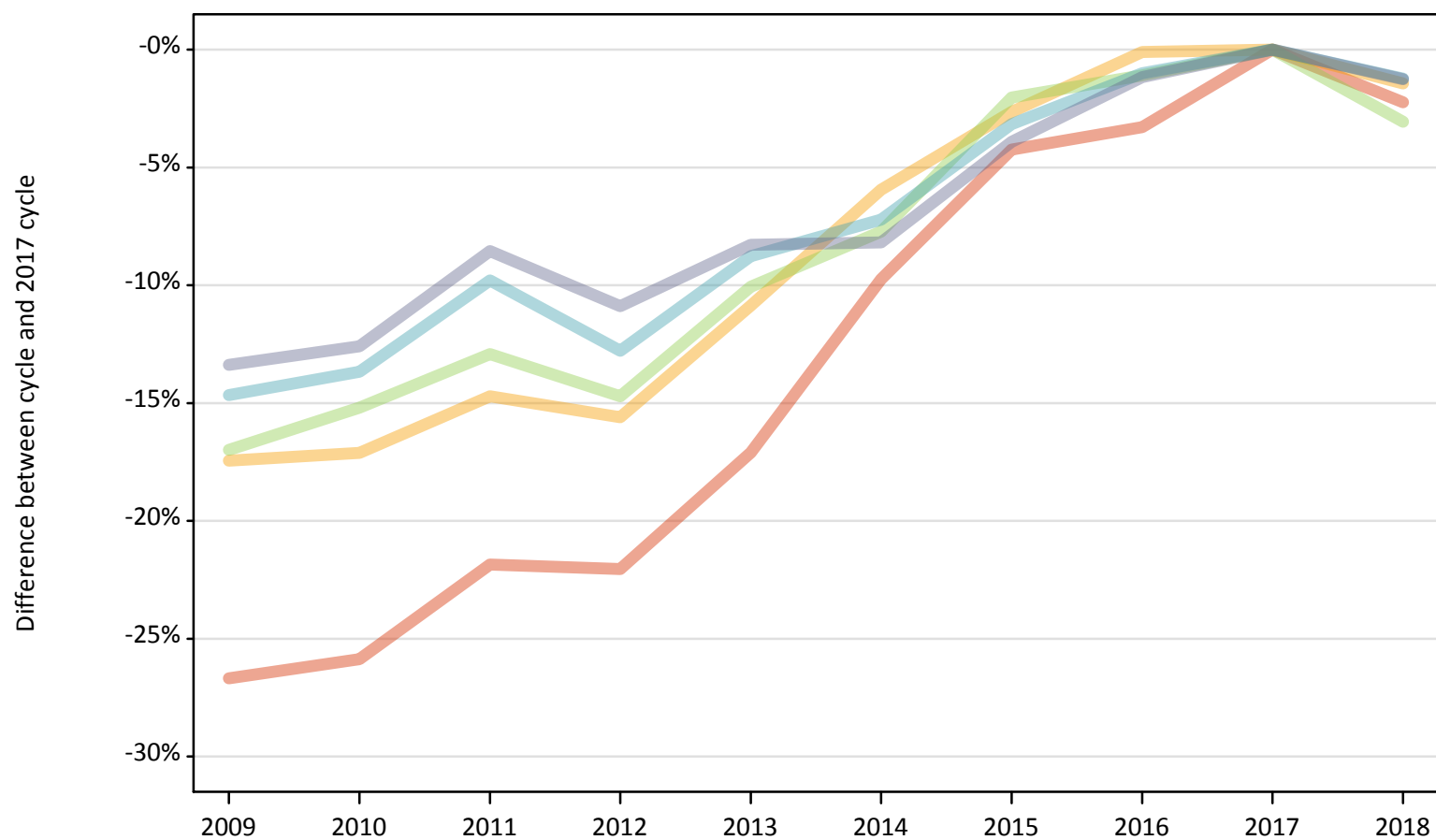
Daily Clearing Analysis: POLAR4

Analysis at 00:05 on Tuesday 21 August 2018 (5 days after A level results day)

P.1 Placed 18 year old applicants from England by POLAR4 quintile: 5 days after A level results day

Placed 18 year old applicants: change relative to 2017 cycle totals

- Quintile 1
- Quintile 2
- Quintile 3
- Quintile 4
- Quintile 5



Note: The percentage change is not plotted in the above chart for groups with fewer than 30 placed applicants in any one cycle.

P.2 Placed 18 year old applicants from England by POLAR4 quintile: 5 days after A level results day

Applicant Status	POLAR4	2009	2010	2011	2012	2013	2014	2015	2016	2017	2018
Placed	Quintile 1	15,860	16,040	16,900	16,860	17,930	19,520	20,710	20,920	21,630	21,150
	Quintile 2	24,700	24,810	25,520	25,260	26,680	28,150	29,130	29,900	29,930	29,500
	Quintile 3	30,900	31,570	32,410	31,740	33,480	34,350	36,470	36,820	37,220	36,080
	Quintile 4	38,850	39,300	41,060	39,700	41,530	42,230	44,080	45,060	45,520	44,960
	Quintile 5	56,500	57,020	59,650	58,130	59,830	59,890	62,680	64,480	65,230	64,420

P.3 Placed 18 year old applicants from England by POLAR4 quintile: 5 days after A level results day

Placed 18 year old applicants: change relative to 2017 cycle totals

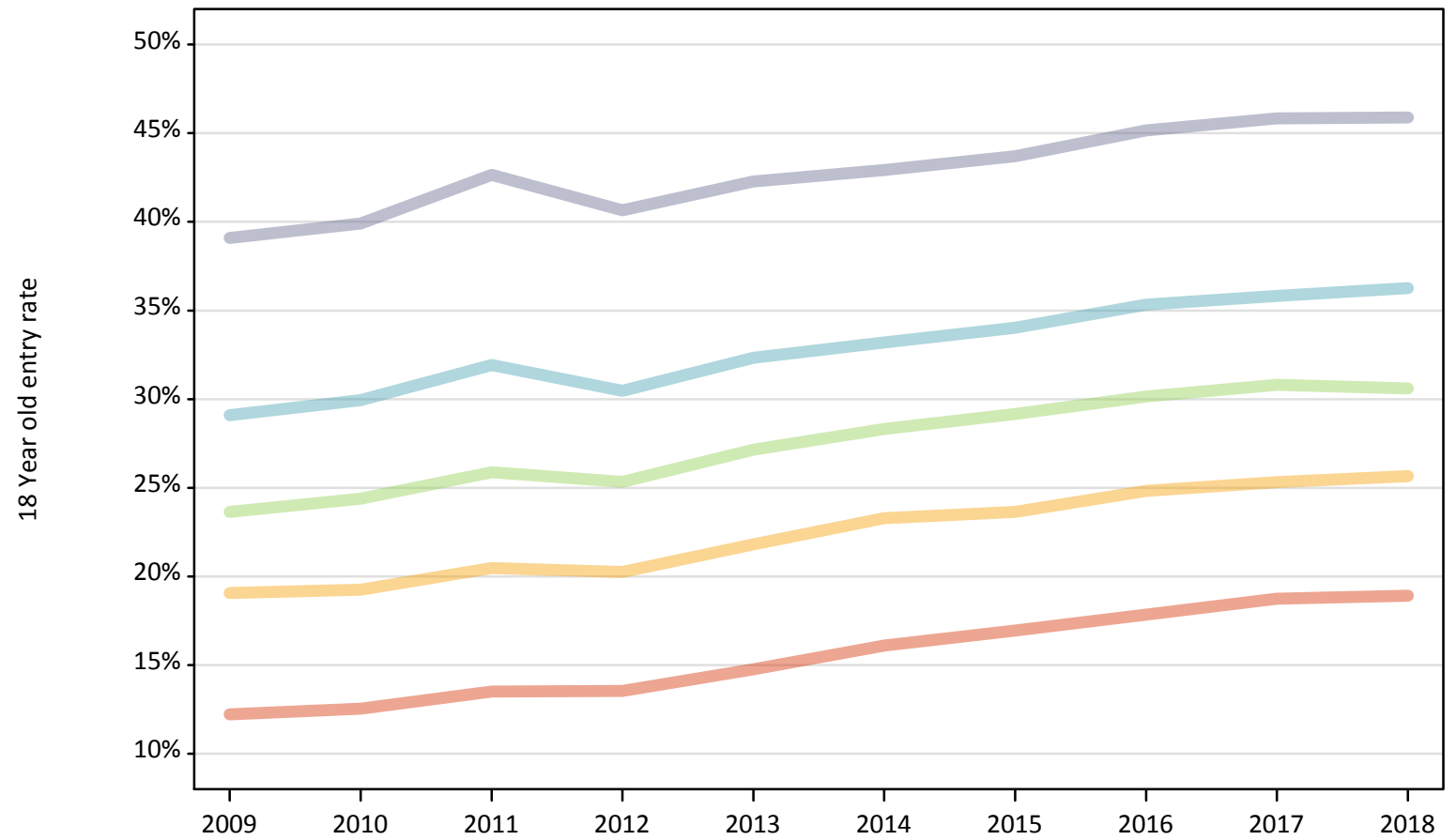
Applicant Status	POLAR4	2009	2010	2011	2012	2013	2014	2015	2016	2017	2018
Placed	Quintile 1	-27%	-26%	-22%	-22%	-17%	-10%	-4%	-3%	0%	-2%
	Quintile 2	-17%	-17%	-15%	-16%	-11%	-6%	-3%	-0%	0%	-1%
	Quintile 3	-17%	-15%	-13%	-15%	-10%	-8%	-2%	-1%	0%	-3%
	Quintile 4	-15%	-14%	-10%	-13%	-9%	-7%	-3%	-1%	0%	-1%
	Quintile 5	-13%	-13%	-9%	-11%	-8%	-8%	-4%	-1%	0%	-1%

Note: The percentage change is not recorded in the above table for groups with fewer than 10 placed applicants in that cycle or in the 2017 cycle.

P.4 Placed 18 year old applicants from England by POLAR4 quintile: 5 days after A level results day

Placed 18 year old applicants: entry rate

- Quintile 1
- Quintile 2
- Quintile 3
- Quintile 4
- Quintile 5



P.5 Placed 18 year old applicants from England by POLAR4 quintile: 5 days after A level results day

Placed 18 year old applicants: entry rate

Applicant Status	POLAR4	2009	2010	2011	2012	2013	2014	2015	2016	2017	2018
Placed	Quintile 1	12.2%	12.5%	13.5%	13.5%	14.8%	16.1%	17.0%	17.9%	18.7%	18.9%
	Quintile 2	19.1%	19.3%	20.5%	20.2%	21.8%	23.3%	23.6%	24.8%	25.3%	25.7%
	Quintile 3	23.6%	24.4%	25.9%	25.3%	27.1%	28.3%	29.2%	30.1%	30.8%	30.6%
	Quintile 4	29.1%	29.9%	31.9%	30.5%	32.3%	33.2%	34.0%	35.3%	35.8%	36.3%
	Quintile 5	39.1%	39.9%	42.7%	40.6%	42.3%	42.9%	43.7%	45.2%	45.8%	45.9%

P.6 Placed 18 year old applicants from England by POLAR4 quintile: 5 days after A level results day

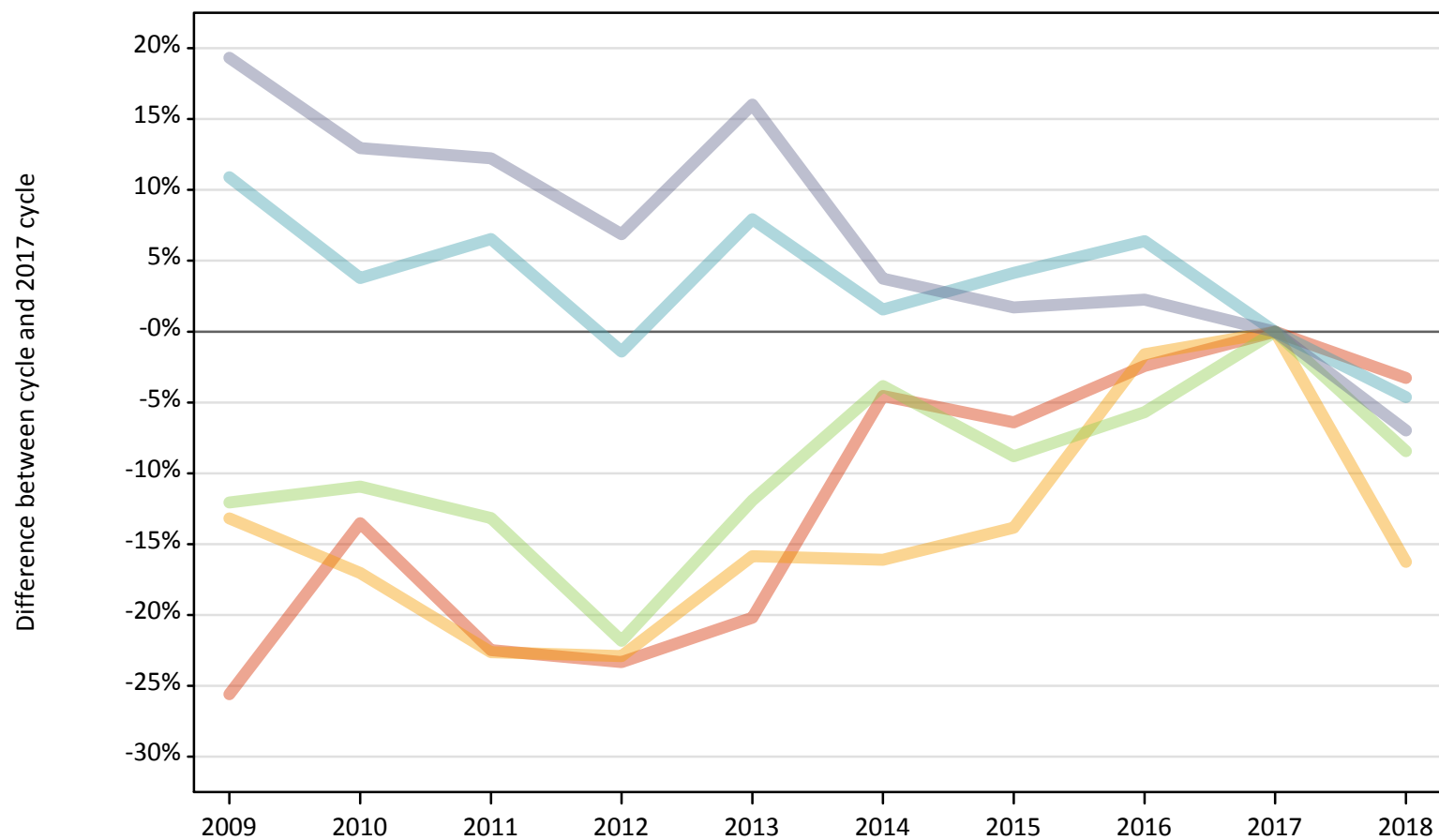
Placed 18 year old applicants: entry rate (indexed to 100 = Quintile 1)

Applicant Status	POLAR4	2009	2010	2011	2012	2013	2014	2015	2016	2017	2018
Placed	Quintile 1	100	100	100	100	100	100	100	100	100	100
	Quintile 2	156	154	152	149	148	145	139	139	135	136
	Quintile 3	193	195	192	187	184	176	172	169	164	162
	Quintile 4	238	239	236	225	219	206	201	198	191	192
	Quintile 5	320	318	316	300	286	267	258	253	245	243

P.7 Placed 18 year old applicants from Northern Ireland by POLAR4 quintile: 5 days after A level results day

Placed 18 year old applicants: change relative to 2017 cycle totals

- Quintile 1
- Quintile 2
- Quintile 3
- Quintile 4
- Quintile 5



Note: The percentage change is not plotted in the above chart for groups with fewer than 30 placed applicants in any one cycle.

P.8 Placed 18 year old applicants from Northern Ireland by POLAR4 quintile: 5 days after A level results day

Applicant Status	POLAR4	2009	2010	2011	2012	2013	2014	2015	2016	2017	2018
Placed	Quintile 1	520	610	550	540	560	670	660	690	700	680
	Quintile 2	650	620	580	580	630	630	650	740	750	630
	Quintile 3	1,190	1,200	1,170	1,060	1,190	1,300	1,230	1,280	1,350	1,240
	Quintile 4	2,140	2,000	2,050	1,900	2,080	1,960	2,010	2,050	1,930	1,840
	Quintile 5	3,770	3,570	3,540	3,370	3,660	3,280	3,210	3,230	3,160	2,940

P.9 Placed 18 year old applicants from Northern Ireland by POLAR4 quintile: 5 days after A level results day

Placed 18 year old applicants: change relative to 2017 cycle totals

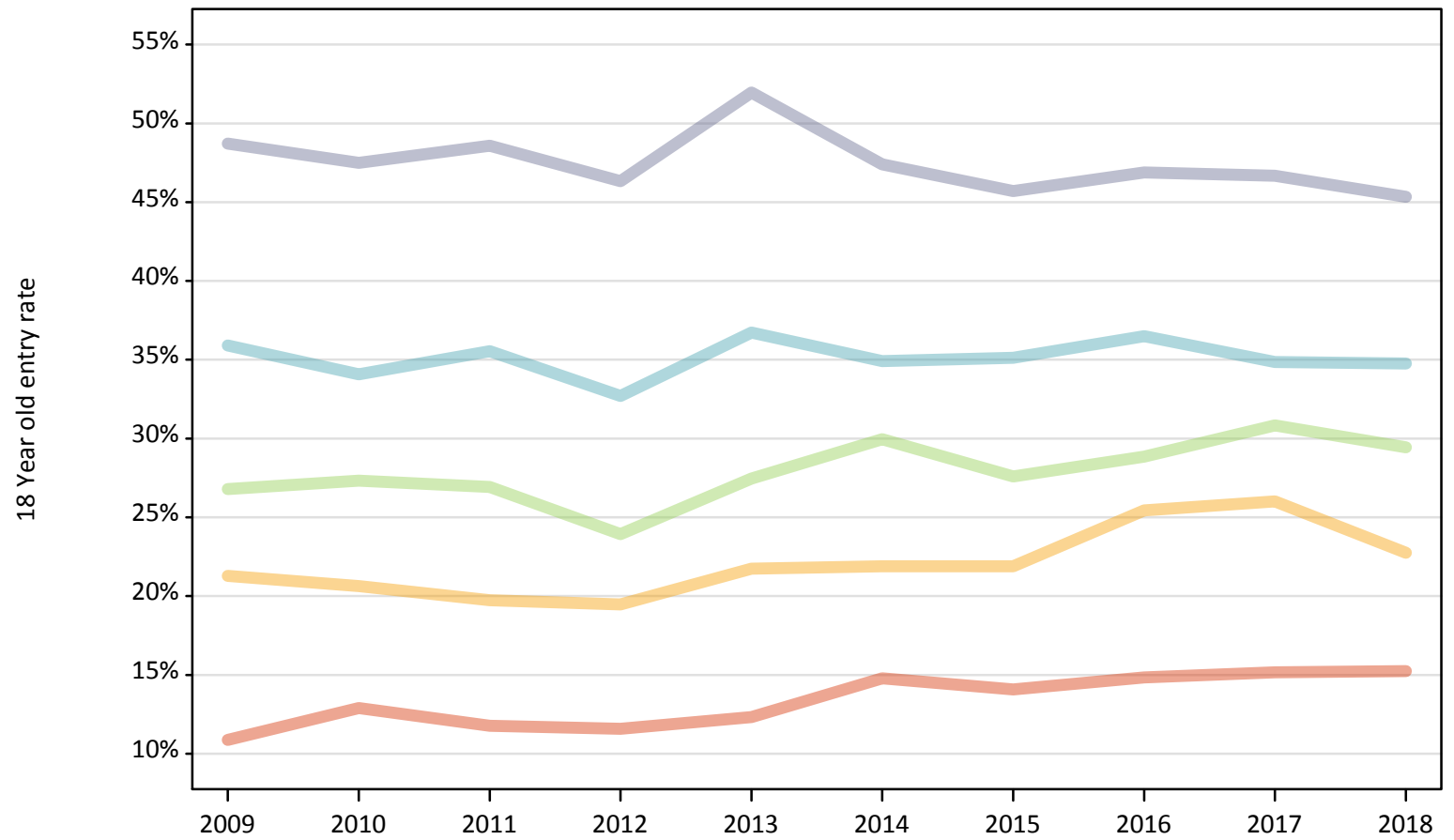
Applicant Status	POLAR4	2009	2010	2011	2012	2013	2014	2015	2016	2017	2018
Placed	Quintile 1	-26%	-14%	-22%	-23%	-20%	-5%	-6%	-2%	0%	-3%
	Quintile 2	-13%	-17%	-23%	-23%	-16%	-16%	-14%	-2%	0%	-16%
	Quintile 3	-12%	-11%	-13%	-22%	-12%	-4%	-9%	-6%	0%	-8%
	Quintile 4	11%	4%	7%	-1%	8%	2%	4%	6%	0%	-5%
	Quintile 5	19%	13%	12%	7%	16%	4%	2%	2%	0%	-7%

Note: The percentage change is not recorded in the above table for groups with fewer than 10 placed applicants in that cycle or in the 2017 cycle.

P.10 Placed 18 year old applicants from Northern Ireland by POLAR4 quintile: 5 days after A level results day

Placed 18 year old applicants: entry rate

- Quintile 1
- Quintile 2
- Quintile 3
- Quintile 4
- Quintile 5



P.11 Placed 18 year old applicants from Northern Ireland by POLAR4 quintile: 5 days after A level results day

Placed 18 year old applicants: entry rate

Applicant Status	POLAR4	2009	2010	2011	2012	2013	2014	2015	2016	2017	2018
Placed	Quintile 1	10.9%	12.9%	11.8%	11.6%	12.3%	14.8%	14.1%	14.8%	15.2%	15.2%
	Quintile 2	21.3%	20.6%	19.7%	19.5%	21.7%	21.9%	21.9%	25.4%	26.0%	22.8%
	Quintile 3	26.8%	27.3%	26.9%	23.9%	27.5%	30.0%	27.6%	28.8%	30.8%	29.4%
	Quintile 4	35.9%	34.1%	35.5%	32.7%	36.7%	34.9%	35.1%	36.5%	34.8%	34.8%
	Quintile 5	48.7%	47.5%	48.6%	46.3%	52.0%	47.4%	45.7%	46.9%	46.7%	45.3%

P.12 Placed 18 year old applicants from Northern Ireland by POLAR4 quintile: 5 days after A level results day

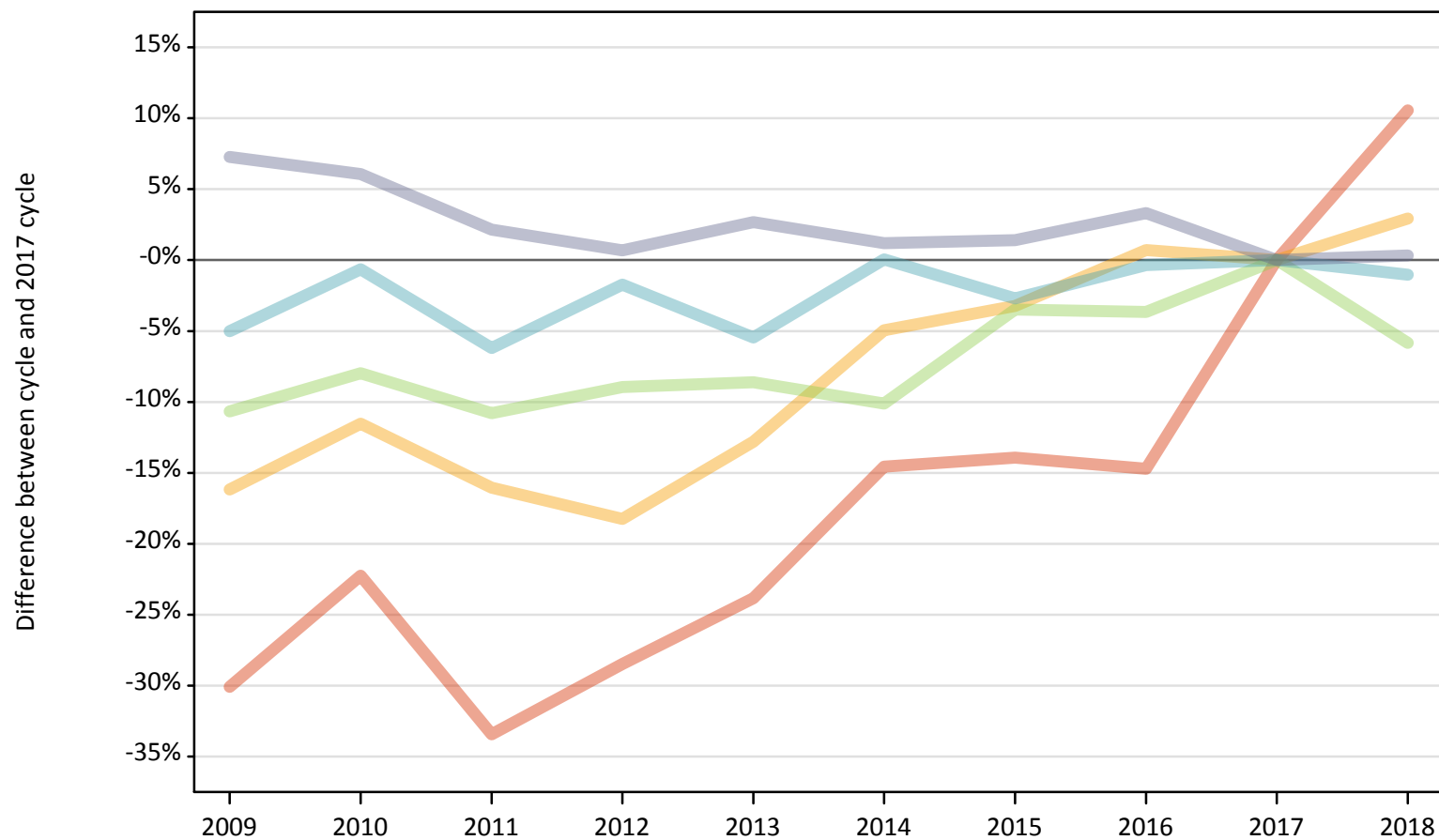
Placed 18 year old applicants: entry rate (indexed to 100 = Quintile 1)

Applicant Status	POLAR4	2009	2010	2011	2012	2013	2014	2015	2016	2017	2018
Placed	Quintile 1	100	100	100	100	100	100	100	100	100	100
	Quintile 2	196	160	168	168	176	148	155	171	172	149
	Quintile 3	246	212	229	207	223	203	196	194	203	193
	Quintile 4	330	264	302	282	298	236	249	246	230	228
	Quintile 5	448	368	413	400	422	321	325	316	308	297

P.13 Placed 18 year old applicants from Scotland by POLAR4 quintile: 5 days after A level results day

Placed 18 year old applicants: change relative to 2017 cycle totals

- Quintile 1
- Quintile 2
- Quintile 3
- Quintile 4
- Quintile 5



Note: The percentage change is not plotted in the above chart for groups with fewer than 30 placed applicants in any one cycle.

P.14 Placed 18 year old applicants from Scotland by POLAR4 quintile: 5 days after A level results day

Applicant Status	POLAR4	2009	2010	2011	2012	2013	2014	2015	2016	2017	2018
Placed	Quintile 1	440	490	420	450	480	530	540	530	630	690
	Quintile 2	1,170	1,240	1,170	1,140	1,220	1,330	1,350	1,410	1,400	1,440
	Quintile 3	2,130	2,190	2,120	2,170	2,180	2,140	2,300	2,290	2,380	2,240
	Quintile 4	3,200	3,350	3,160	3,310	3,190	3,370	3,280	3,360	3,370	3,330
	Quintile 5	7,240	7,160	6,890	6,790	6,930	6,830	6,840	6,970	6,750	6,770

P.15 Placed 18 year old applicants from Scotland by POLAR4 quintile: 5 days after A level results day

Placed 18 year old applicants: change relative to 2017 cycle totals

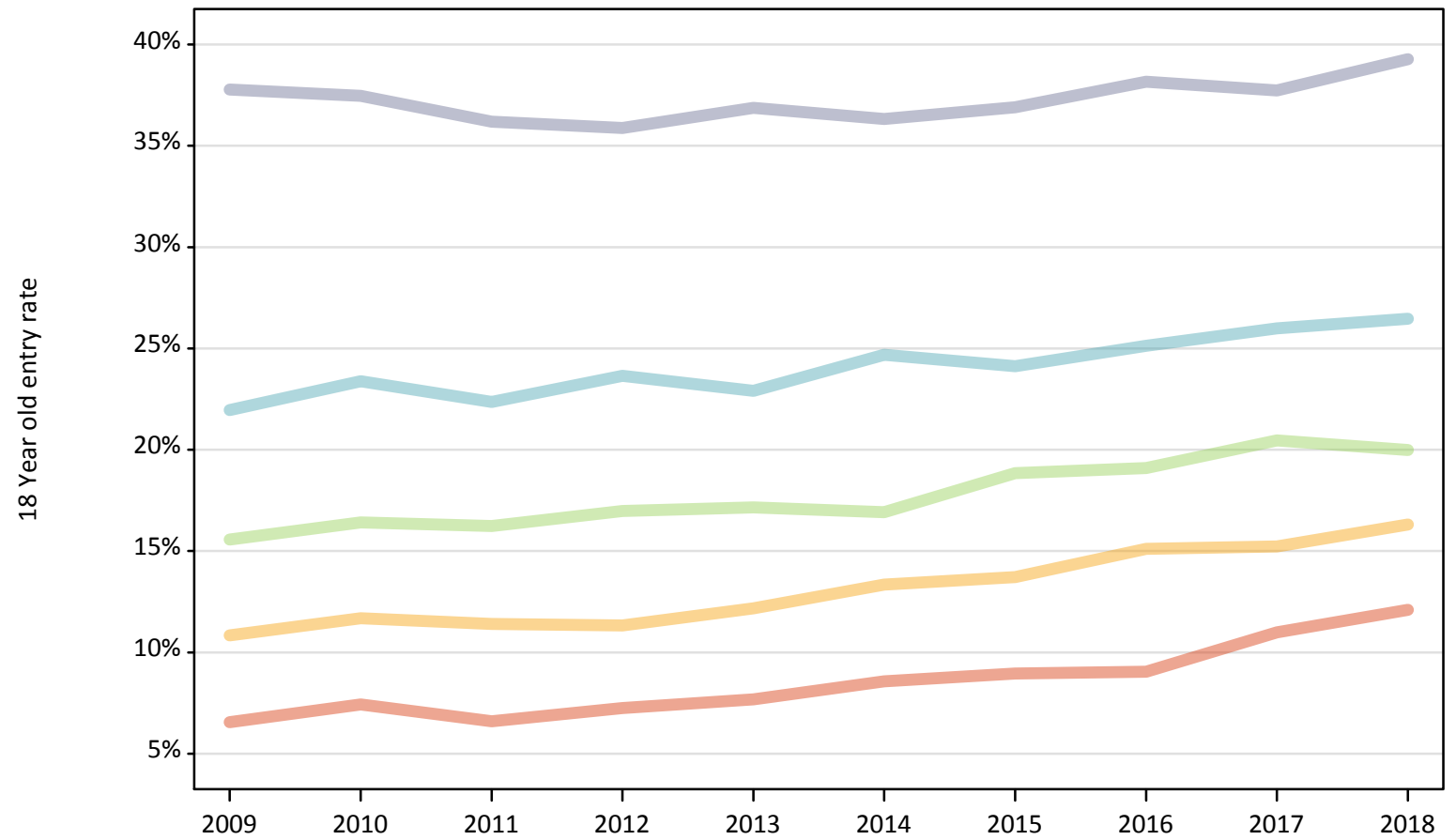
Applicant Status	POLAR4	2009	2010	2011	2012	2013	2014	2015	2016	2017	2018
Placed	Quintile 1	-30%	-22%	-33%	-28%	-24%	-15%	-14%	-15%	0%	11%
	Quintile 2	-16%	-12%	-16%	-18%	-13%	-5%	-3%	1%	0%	3%
	Quintile 3	-11%	-8%	-11%	-9%	-9%	-10%	-3%	-4%	0%	-6%
	Quintile 4	-5%	-1%	-6%	-2%	-5%	0%	-3%	-0%	0%	-1%
	Quintile 5	7%	6%	2%	1%	3%	1%	1%	3%	0%	0%

Note: The percentage change is not recorded in the above table for groups with fewer than 10 placed applicants in that cycle or in the 2017 cycle.

P.16 Placed 18 year old applicants from Scotland by POLAR4 quintile: 5 days after A level results day

Placed 18 year old applicants: entry rate

- Quintile 1
- Quintile 2
- Quintile 3
- Quintile 4
- Quintile 5



P.17 Placed 18 year old applicants from Scotland by POLAR4 quintile: 5 days after A level results day

Placed 18 year old applicants: entry rate

Applicant Status	POLAR4	2009	2010	2011	2012	2013	2014	2015	2016	2017	2018
Placed	Quintile 1	6.5%	7.4%	6.6%	7.3%	7.7%	8.6%	9.0%	9.0%	11.0%	12.1%
	Quintile 2	10.8%	11.7%	11.4%	11.3%	12.2%	13.4%	13.7%	15.1%	15.2%	16.3%
	Quintile 3	15.6%	16.4%	16.2%	17.0%	17.2%	16.9%	18.8%	19.1%	20.5%	20.0%
	Quintile 4	22.0%	23.4%	22.4%	23.7%	22.9%	24.7%	24.1%	25.1%	26.0%	26.5%
	Quintile 5	37.8%	37.5%	36.2%	35.9%	36.9%	36.3%	36.9%	38.2%	37.7%	39.3%

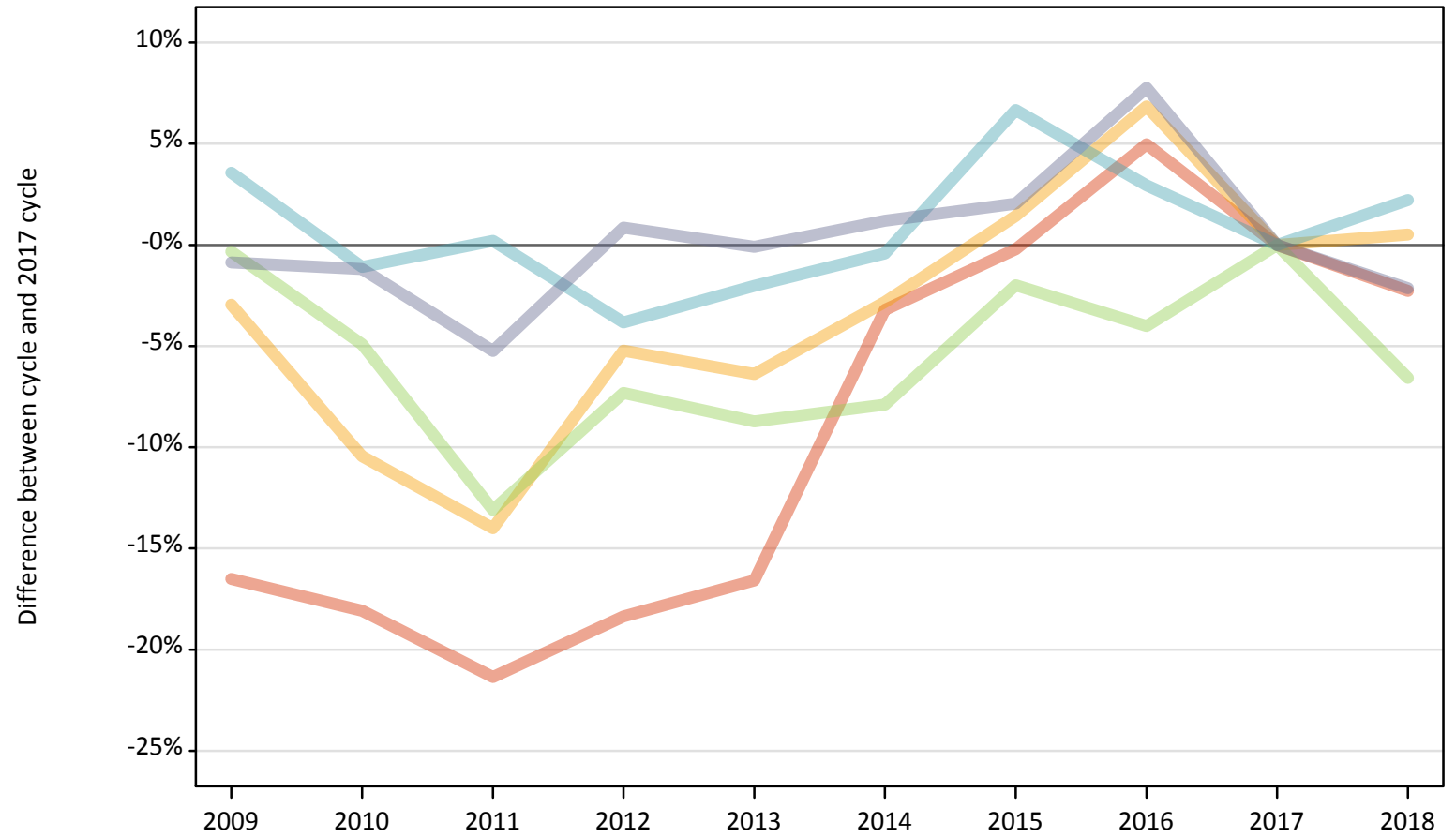
P.18 Placed 18 year old applicants from Scotland by POLAR4 quintile: 5 days after A level results day

Placed 18 year old applicants: entry rate (indexed to 100 = Quintile 1)

Applicant Status	POLAR4	2009	2010	2011	2012	2013	2014	2015	2016	2017	2018
Placed	Quintile 1	100	100	100	100	100	100	100	100	100	100
	Quintile 2	166	157	173	156	159	156	153	167	139	135
	Quintile 3	238	221	246	234	224	197	210	211	186	165
	Quintile 4	335	314	339	326	298	288	269	278	236	219
	Quintile 5	577	504	549	494	480	424	412	422	343	325

P.19 Placed 18 year old applicants from Wales by POLAR4 quintile: 5 days after A level results day
Placed 18 year old applicants: change relative to 2017 cycle totals

- Quintile 1
- Quintile 2
- Quintile 3
- Quintile 4
- Quintile 5



Note: The percentage change is not plotted in the above chart for groups with fewer than 30 placed applicants in any one cycle.

P.20 Placed 18 year old applicants from Wales by POLAR4 quintile: 5 days after A level results day

Applicant Status	POLAR4	2009	2010	2011	2012	2013	2014	2015	2016	2017	2018
Placed	Quintile 1	1,170	1,150	1,110	1,150	1,170	1,360	1,400	1,480	1,410	1,370
	Quintile 2	2,100	1,940	1,860	2,050	2,030	2,100	2,200	2,310	2,160	2,180
	Quintile 3	2,410	2,300	2,100	2,240	2,210	2,230	2,370	2,320	2,420	2,260
	Quintile 4	2,000	1,910	1,940	1,860	1,900	1,930	2,060	1,990	1,940	1,980
	Quintile 5	2,080	2,080	1,990	2,120	2,100	2,130	2,140	2,260	2,100	2,060

P.21 Placed 18 year old applicants from Wales by POLAR4 quintile: 5 days after A level results day

Placed 18 year old applicants: change relative to 2017 cycle totals

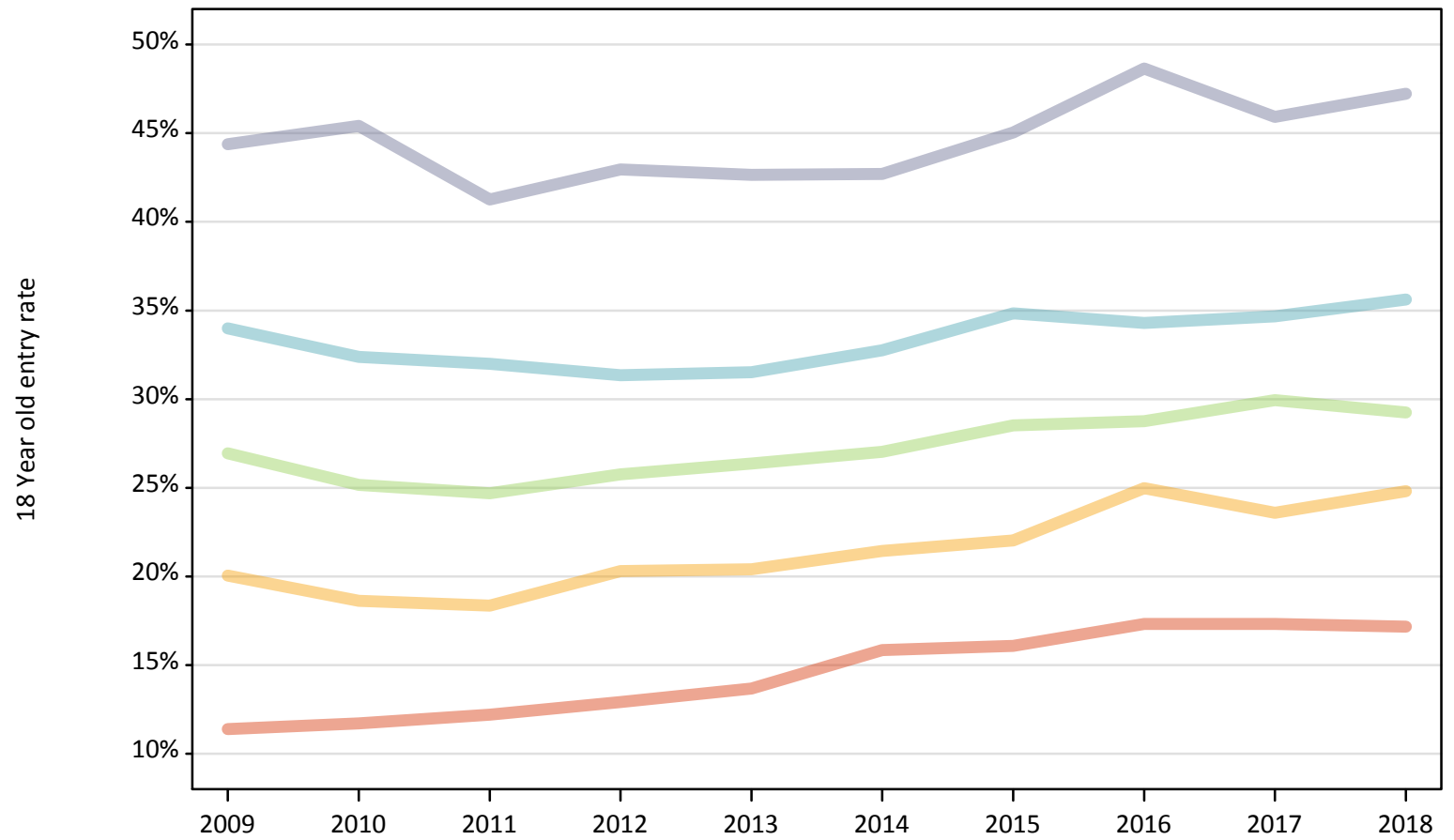
Applicant Status	POLAR4	2009	2010	2011	2012	2013	2014	2015	2016	2017	2018
Placed	Quintile 1	-17%	-18%	-21%	-18%	-17%	-3%	-0%	5%	0%	-2%
	Quintile 2	-3%	-10%	-14%	-5%	-6%	-3%	1%	7%	0%	1%
	Quintile 3	-0%	-5%	-13%	-7%	-9%	-8%	-2%	-4%	0%	-7%
	Quintile 4	4%	-1%	0%	-4%	-2%	-0%	7%	3%	0%	2%
	Quintile 5	-1%	-1%	-5%	1%	-0%	1%	2%	8%	0%	-2%

Note: The percentage change is not recorded in the above table for groups with fewer than 10 placed applicants in that cycle or in the 2017 cycle.

P.22 Placed 18 year old applicants from Wales by POLAR4 quintile: 5 days after A level results day

Placed 18 year old applicants: entry rate

- Quintile 1
- Quintile 2
- Quintile 3
- Quintile 4
- Quintile 5



P.23 Placed 18 year old applicants from Wales by POLAR4 quintile: 5 days after A level results day

Placed 18 year old applicants: entry rate

Applicant Status	POLAR4	2009	2010	2011	2012	2013	2014	2015	2016	2017	2018
Placed	Quintile 1	11.4%	11.7%	12.2%	12.9%	13.7%	15.9%	16.1%	17.3%	17.3%	17.2%
	Quintile 2	20.0%	18.6%	18.4%	20.3%	20.4%	21.4%	22.0%	25.0%	23.6%	24.8%
	Quintile 3	26.9%	25.2%	24.7%	25.8%	26.4%	27.0%	28.5%	28.8%	29.9%	29.2%
	Quintile 4	34.0%	32.4%	32.0%	31.3%	31.5%	32.8%	34.8%	34.3%	34.7%	35.6%
	Quintile 5	44.4%	45.4%	41.3%	43.0%	42.6%	42.7%	45.0%	48.7%	45.9%	47.2%

P.24 Placed 18 year old applicants from Wales by POLAR4 quintile: 5 days after A level results day

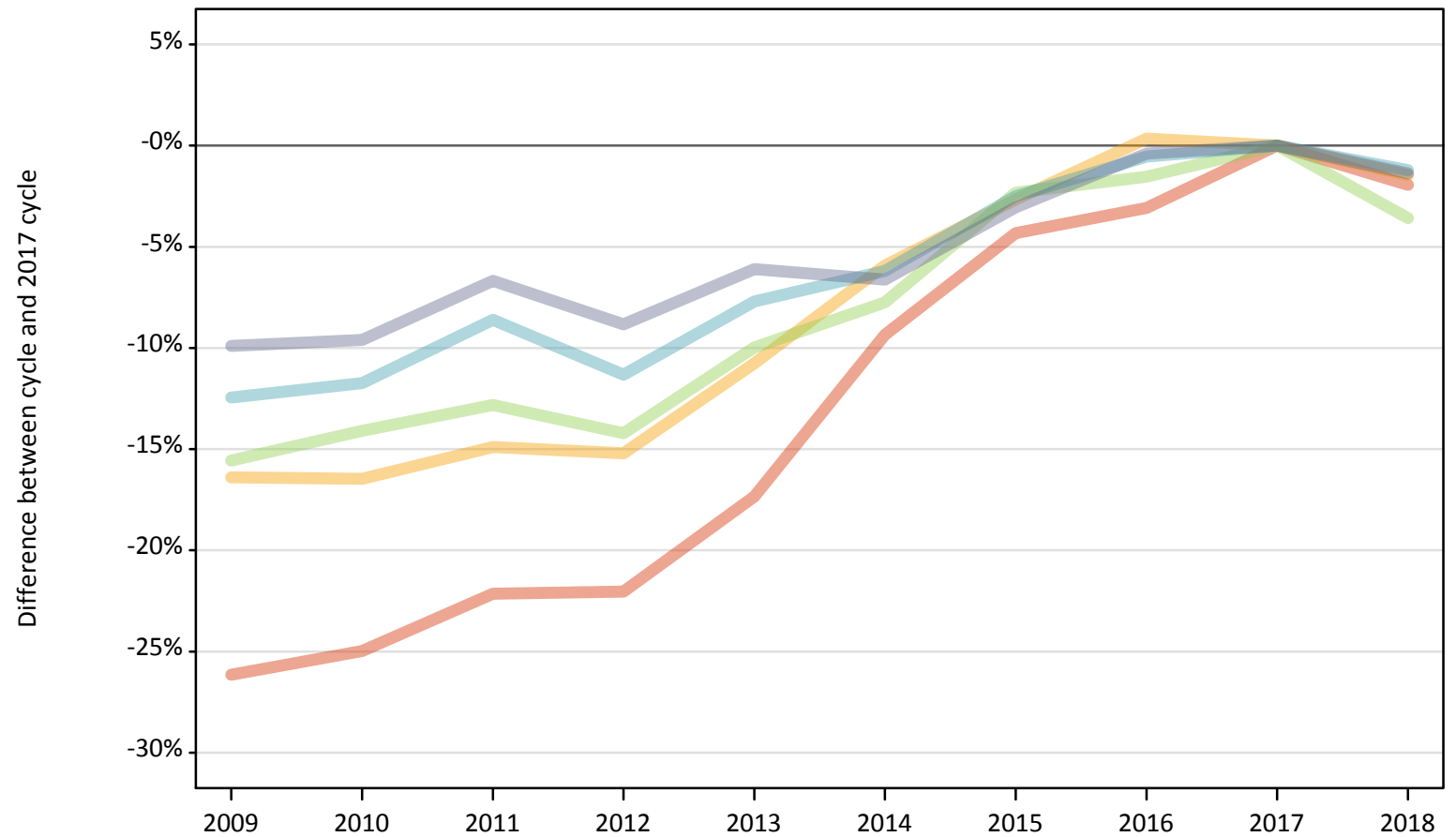
Placed 18 year old applicants: entry rate (indexed to 100 = Quintile 1)

Applicant Status	POLAR4	2009	2010	2011	2012	2013	2014	2015	2016	2017	2018
Placed	Quintile 1	100	100	100	100	100	100	100	100	100	100
	Quintile 2	176	159	150	157	149	135	137	144	136	145
	Quintile 3	237	215	202	199	193	171	177	166	173	170
	Quintile 4	299	277	262	243	230	207	217	198	200	208
	Quintile 5	390	388	338	333	312	269	280	281	265	275

P.25 Placed 18 year old applicants from the UK by POLAR4 quintile: 5 days after A level results day

Placed 18 year old applicants: change relative to 2017 cycle totals

- Quintile 1
- Quintile 2
- Quintile 3
- Quintile 4
- Quintile 5



Note: The percentage change is not plotted in the above chart for groups with fewer than 30 placed applicants in any one cycle.

P.26 Placed 18 year old applicants from the UK by POLAR4 quintile: 5 days after A level results day

Applicant Status	POLAR4	2009	2010	2011	2012	2013	2014	2015	2016	2017	2018
Placed	Quintile 1	17,990	18,280	18,970	19,000	20,140	22,090	23,310	23,610	24,360	23,890
	Quintile 2	28,630	28,600	29,140	29,030	30,550	32,210	33,330	34,350	34,240	33,740
	Quintile 3	36,630	37,260	37,820	37,210	39,050	40,020	42,370	42,710	43,380	41,820
	Quintile 4	46,190	46,560	48,210	46,780	48,690	49,490	51,430	52,460	52,750	52,110
	Quintile 5	69,590	69,820	72,080	70,420	72,520	72,120	74,880	76,940	77,240	76,180

P.27 Placed 18 year old applicants from the UK by POLAR4 quintile: 5 days after A level results day

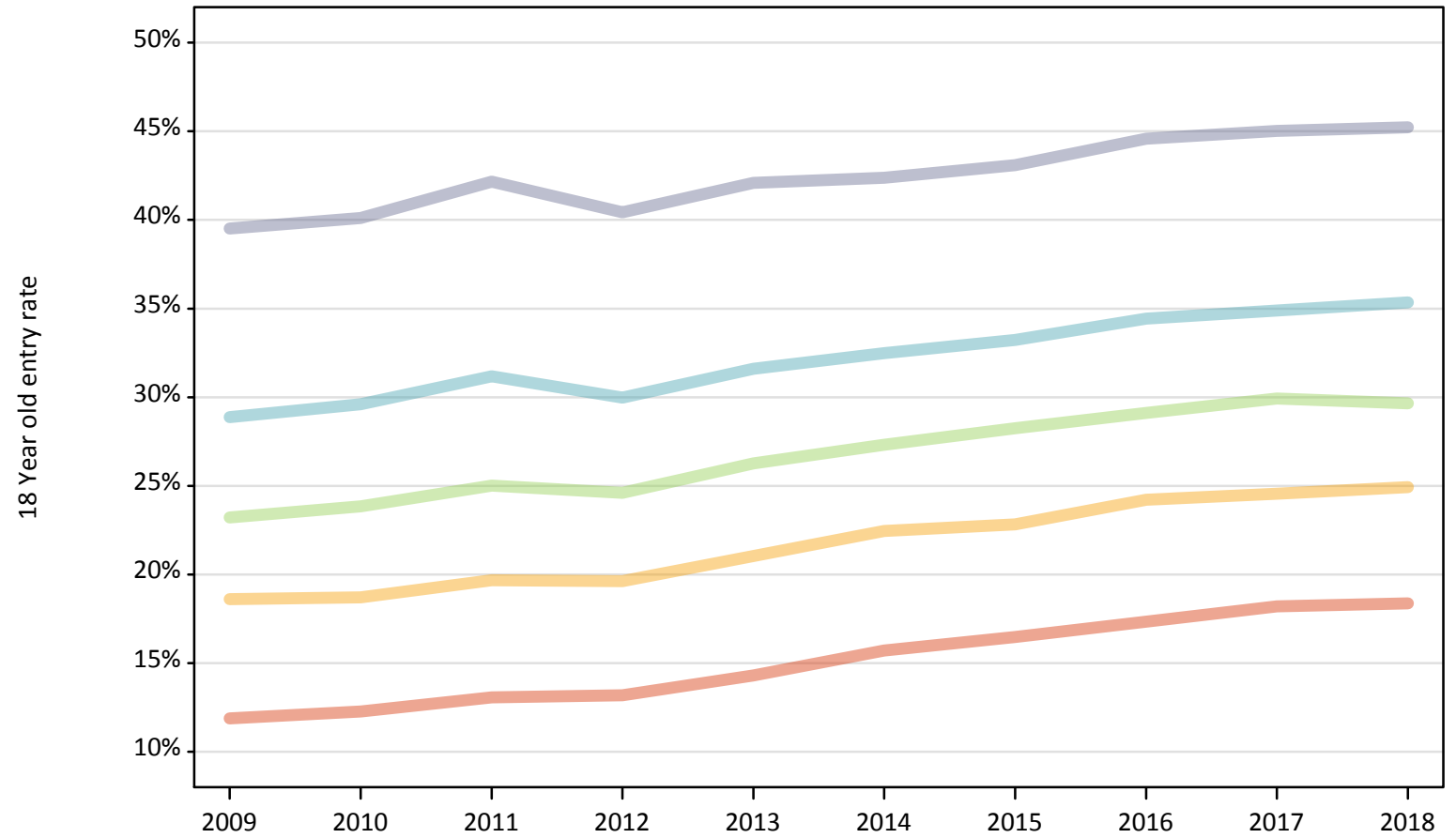
Placed 18 year old applicants: change relative to 2017 cycle totals

Applicant Status	POLAR4	2009	2010	2011	2012	2013	2014	2015	2016	2017	2018
Placed	Quintile 1	-26%	-25%	-22%	-22%	-17%	-9%	-4%	-3%	0%	-2%
	Quintile 2	-16%	-16%	-15%	-15%	-11%	-6%	-3%	0%	0%	-1%
	Quintile 3	-16%	-14%	-13%	-14%	-10%	-8%	-2%	-2%	0%	-4%
	Quintile 4	-12%	-12%	-9%	-11%	-8%	-6%	-3%	-1%	0%	-1%
	Quintile 5	-10%	-10%	-7%	-9%	-6%	-7%	-3%	-0%	0%	-1%

Note: The percentage change is not recorded in the above table for groups with fewer than 10 placed applicants in that cycle or in the 2017 cycle.

P.28 Placed 18 year old applicants from the UK by POLAR4 quintile: 5 days after A level results day
Placed 18 year old applicants: entry rate

- Quintile 1
- Quintile 2
- Quintile 3
- Quintile 4
- Quintile 5



P.29 Placed 18 year old applicants from the UK by POLAR4 quintile: 5 days after A level results day

Placed 18 year old applicants: entry rate

Applicant Status	POLAR4	2009	2010	2011	2012	2013	2014	2015	2016	2017	2018
Placed	Quintile 1	11.9%	12.3%	13.1%	13.2%	14.3%	15.7%	16.5%	17.3%	18.2%	18.4%
	Quintile 2	18.6%	18.7%	19.7%	19.6%	21.1%	22.4%	22.8%	24.2%	24.5%	24.9%
	Quintile 3	23.2%	23.8%	25.0%	24.6%	26.3%	27.3%	28.2%	29.1%	29.9%	29.6%
	Quintile 4	28.9%	29.6%	31.2%	30.0%	31.6%	32.5%	33.2%	34.4%	34.9%	35.3%
	Quintile 5	39.5%	40.1%	42.2%	40.4%	42.1%	42.4%	43.1%	44.6%	45.0%	45.2%

P.30 Placed 18 year old applicants from the UK by POLAR4 quintile: 5 days after A level results day

Placed 18 year old applicants: entry rate (indexed to 100 = Quintile 1)

Applicant Status	POLAR4	2009	2010	2011	2012	2013	2014	2015	2016	2017	2018
Placed	Quintile 1	100	100	100	100	100	100	100	100	100	100
	Quintile 2	157	153	151	149	147	143	139	140	135	136
	Quintile 3	196	194	191	187	184	174	172	168	164	161
	Quintile 4	243	241	239	227	221	207	202	199	192	192
	Quintile 5	333	327	323	307	294	270	262	257	247	246