

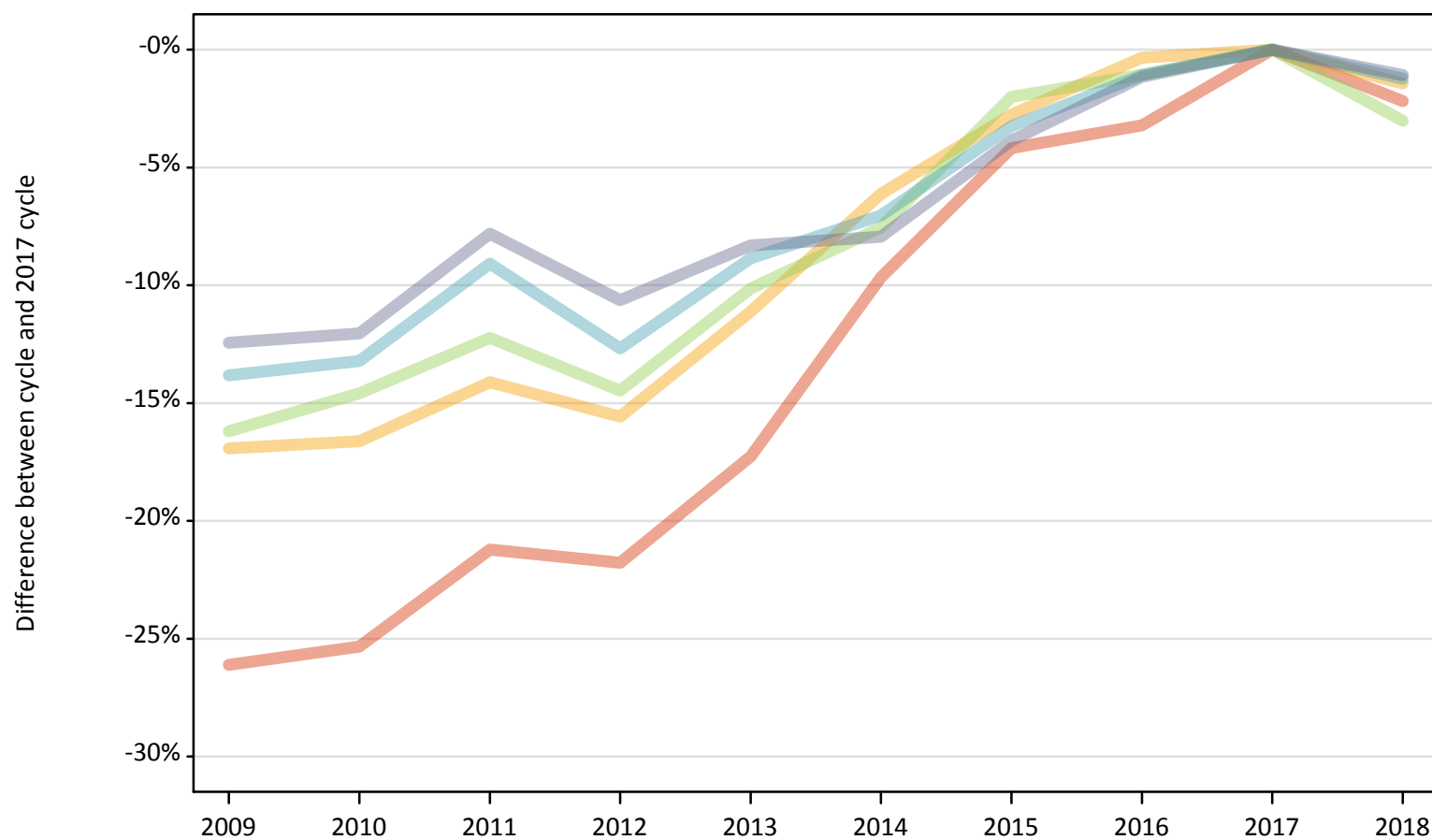
Daily Clearing Analysis: POLAR4

Analysis at 00:05 on Wednesday 22 August 2018 (6 days after A level results day)

P.1 Placed 18 year old applicants from England by POLAR4 quintile: 6 days after A level results day

Placed 18 year old applicants: change relative to 2017 cycle totals

- Quintile 1
- Quintile 2
- Quintile 3
- Quintile 4
- Quintile 5



Note: The percentage change is not plotted in the above chart for groups with fewer than 30 placed applicants in any one cycle.

P.2 Placed 18 year old applicants from England by POLAR4 quintile: 6 days after A level results day

Applicant Status	POLAR4	2009	2010	2011	2012	2013	2014	2015	2016	2017	2018
Placed	Quintile 1	16,140	16,310	17,210	17,090	18,070	19,730	20,930	21,140	21,840	21,370
	Quintile 2	25,150	25,250	26,000	25,560	26,910	28,420	29,440	30,170	30,280	29,840
	Quintile 3	31,480	32,090	32,970	32,130	33,760	34,730	36,820	37,170	37,570	36,440
	Quintile 4	39,650	39,940	41,830	40,180	41,940	42,780	44,520	45,520	46,010	45,450
	Quintile 5	57,610	57,870	60,650	58,800	60,330	60,570	63,250	65,030	65,790	65,080

P.3 Placed 18 year old applicants from England by POLAR4 quintile: 6 days after A level results day

Placed 18 year old applicants: change relative to 2017 cycle totals

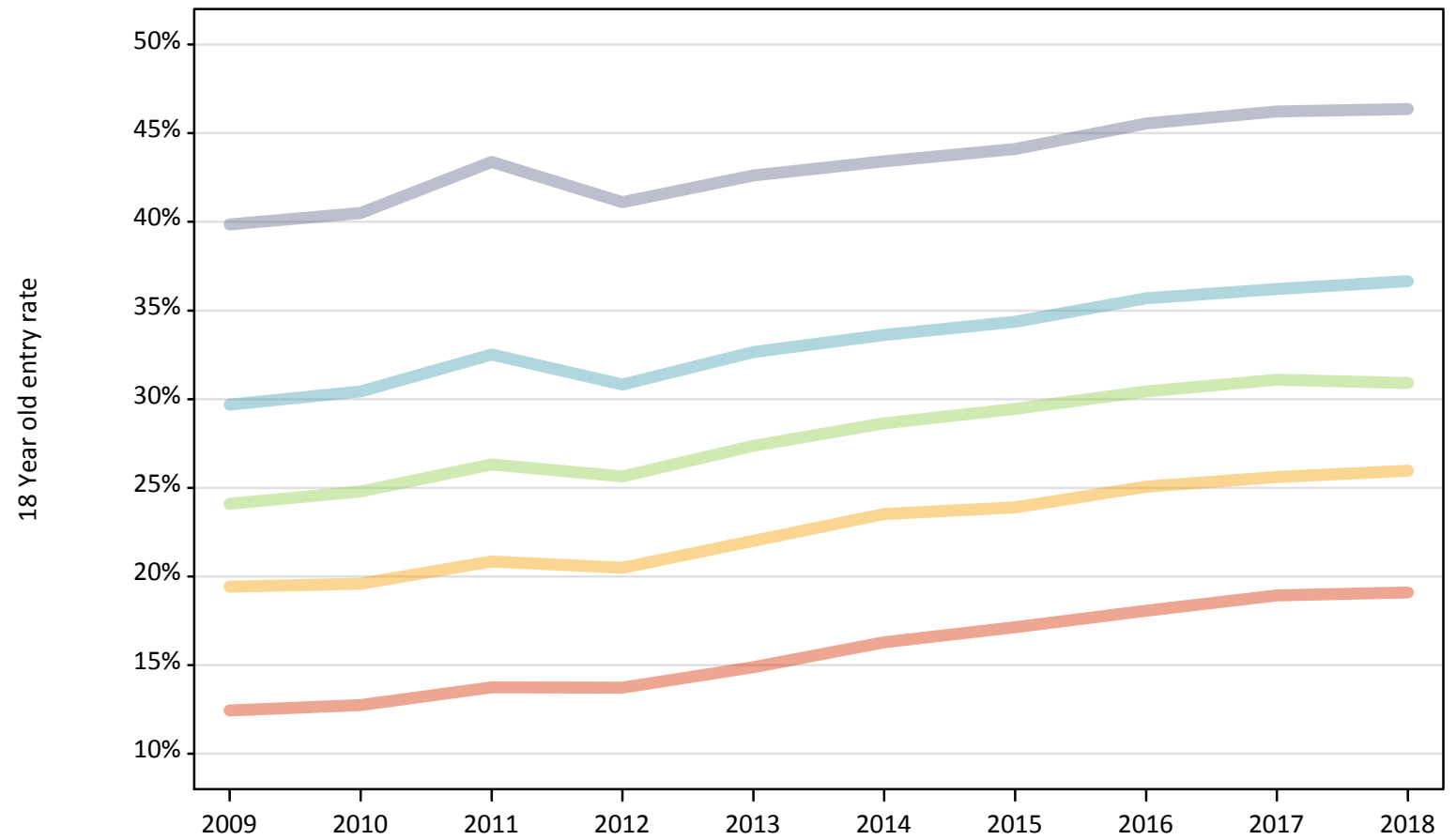
Applicant Status	POLAR4	2009	2010	2011	2012	2013	2014	2015	2016	2017	2018
Placed	Quintile 1	-26%	-25%	-21%	-22%	-17%	-10%	-4%	-3%	0%	-2%
	Quintile 2	-17%	-17%	-14%	-16%	-11%	-6%	-3%	-0%	0%	-1%
	Quintile 3	-16%	-15%	-12%	-14%	-10%	-8%	-2%	-1%	0%	-3%
	Quintile 4	-14%	-13%	-9%	-13%	-9%	-7%	-3%	-1%	0%	-1%
	Quintile 5	-12%	-12%	-8%	-11%	-8%	-8%	-4%	-1%	0%	-1%

Note: The percentage change is not recorded in the above table for groups with fewer than 10 placed applicants in that cycle or in the 2017 cycle.

P.4 Placed 18 year old applicants from England by POLAR4 quintile: 6 days after A level results day

Placed 18 year old applicants: entry rate

- Quintile 1
- Quintile 2
- Quintile 3
- Quintile 4
- Quintile 5



P.5 Placed 18 year old applicants from England by POLAR4 quintile: 6 days after A level results day

Placed 18 year old applicants: entry rate

Applicant Status	POLAR4	2009	2010	2011	2012	2013	2014	2015	2016	2017	2018
Placed	Quintile 1	12.4%	12.8%	13.7%	13.7%	14.9%	16.3%	17.1%	18.1%	18.9%	19.1%
	Quintile 2	19.4%	19.6%	20.8%	20.5%	22.0%	23.5%	23.9%	25.1%	25.6%	26.0%
	Quintile 3	24.1%	24.8%	26.3%	25.6%	27.4%	28.6%	29.5%	30.4%	31.1%	30.9%
	Quintile 4	29.7%	30.4%	32.5%	30.8%	32.6%	33.6%	34.4%	35.7%	36.2%	36.6%
	Quintile 5	39.9%	40.5%	43.4%	41.1%	42.6%	43.4%	44.1%	45.5%	46.2%	46.4%

P.6 Placed 18 year old applicants from England by POLAR4 quintile: 6 days after A level results day

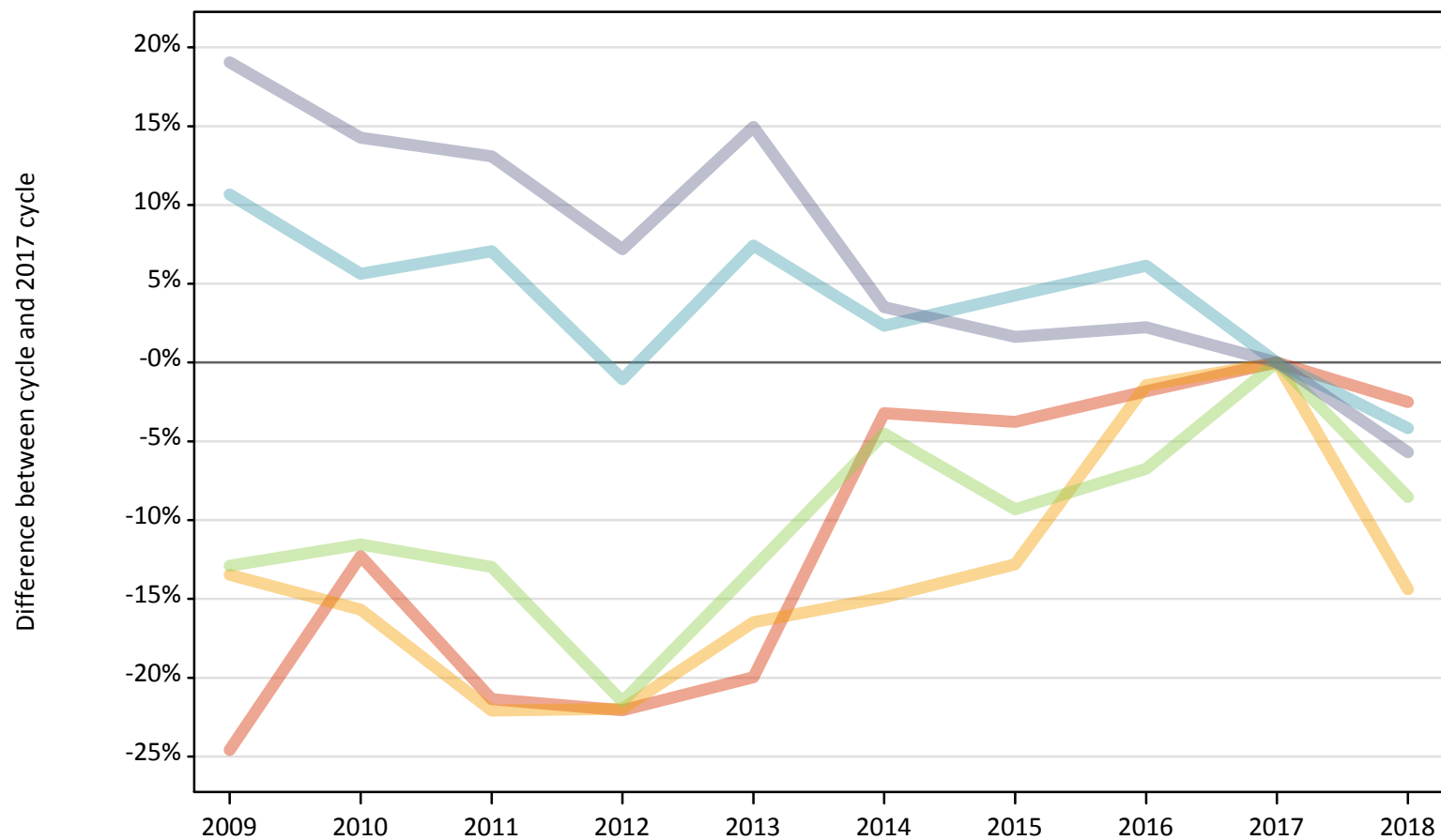
Placed 18 year old applicants: entry rate (indexed to 100 = Quintile 1)

Applicant Status	POLAR4	2009	2010	2011	2012	2013	2014	2015	2016	2017	2018
Placed	Quintile 1	100	100	100	100	100	100	100	100	100	100
	Quintile 2	156	154	152	149	148	144	139	139	135	136
	Quintile 3	194	194	192	187	184	176	172	169	164	162
	Quintile 4	239	239	237	225	219	207	201	198	191	192
	Quintile 5	320	318	316	299	286	267	257	252	244	243

P.7 Placed 18 year old applicants from Northern Ireland by POLAR4 quintile: 6 days after A level results day

Placed 18 year old applicants: change relative to 2017 cycle totals

- Quintile 1
- Quintile 2
- Quintile 3
- Quintile 4
- Quintile 5



Note: The percentage change is not plotted in the above chart for groups with fewer than 30 placed applicants in any one cycle.

P.8 Placed 18 year old applicants from Northern Ireland by POLAR4 quintile: 6 days after A level results day

Applicant Status	POLAR4	2009	2010	2011	2012	2013	2014	2015	2016	2017	2018
Placed	Quintile 1	540	630	560	560	570	690	690	700	720	700
	Quintile 2	660	650	600	600	640	650	670	750	770	660
	Quintile 3	1,220	1,230	1,210	1,100	1,210	1,330	1,270	1,300	1,400	1,280
	Quintile 4	2,180	2,080	2,110	1,950	2,110	2,010	2,050	2,090	1,970	1,890
	Quintile 5	3,820	3,670	3,630	3,440	3,690	3,320	3,260	3,280	3,210	3,030

P.9 Placed 18 year old applicants from Northern Ireland by POLAR4 quintile: 6 days after A level results day

Placed 18 year old applicants: change relative to 2017 cycle totals

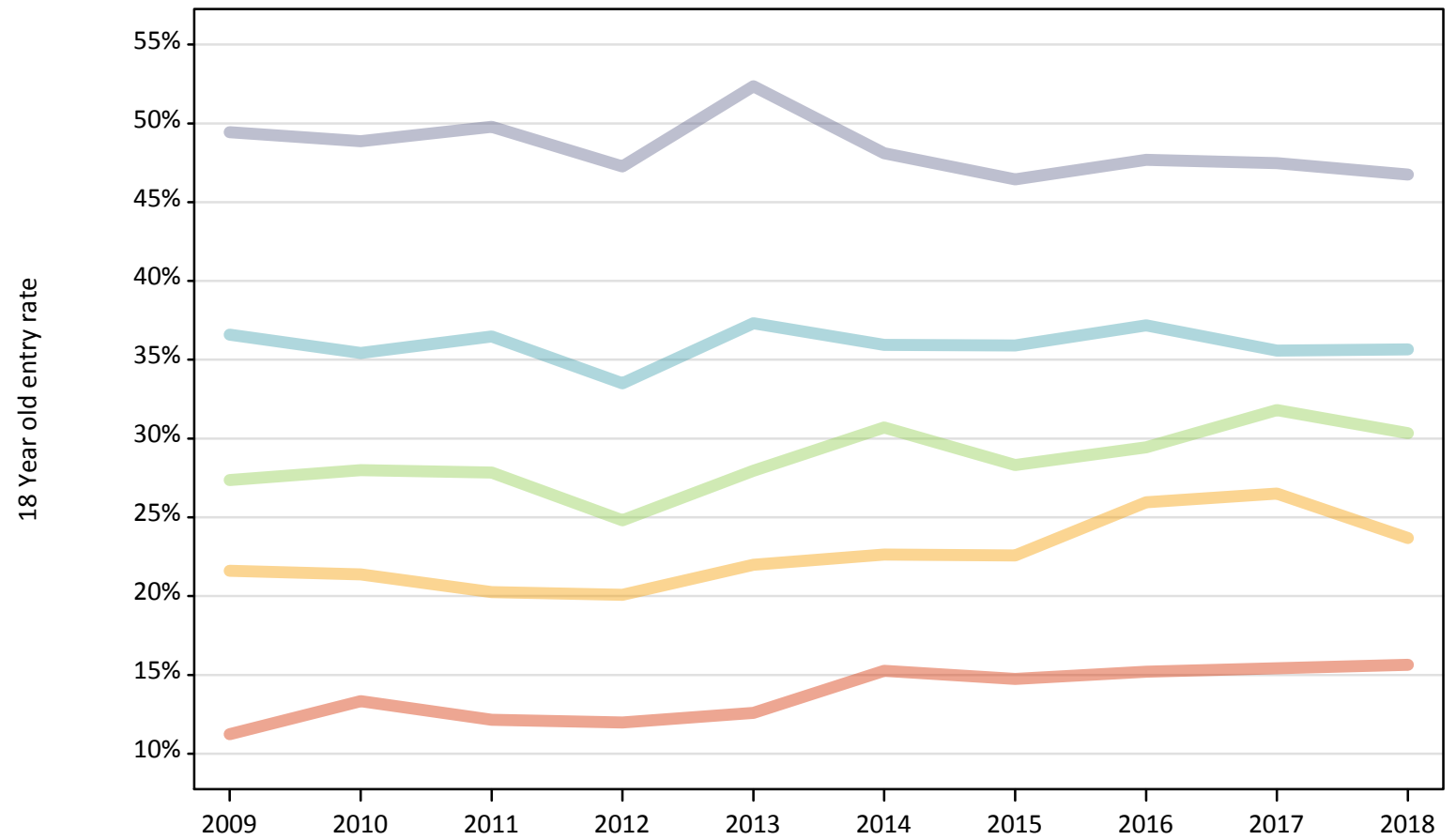
Applicant Status	POLAR4	2009	2010	2011	2012	2013	2014	2015	2016	2017	2018
Placed	Quintile 1	-25%	-12%	-21%	-22%	-20%	-3%	-4%	-2%	0%	-3%
	Quintile 2	-13%	-16%	-22%	-22%	-16%	-15%	-13%	-1%	0%	-14%
	Quintile 3	-13%	-12%	-13%	-22%	-13%	-5%	-9%	-7%	0%	-9%
	Quintile 4	11%	6%	7%	-1%	7%	2%	4%	6%	0%	-4%
	Quintile 5	19%	14%	13%	7%	15%	4%	2%	2%	0%	-6%

Note: The percentage change is not recorded in the above table for groups with fewer than 10 placed applicants in that cycle or in the 2017 cycle.

P.10 Placed 18 year old applicants from Northern Ireland by POLAR4 quintile: 6 days after A level results day

Placed 18 year old applicants: entry rate

- Quintile 1
- Quintile 2
- Quintile 3
- Quintile 4
- Quintile 5



P.11 Placed 18 year old applicants from Northern Ireland by POLAR4 quintile: 6 days after A level results day

Placed 18 year old applicants: entry rate

Applicant Status	POLAR4	2009	2010	2011	2012	2013	2014	2015	2016	2017	2018
Placed	Quintile 1	11.2%	13.3%	12.2%	12.0%	12.6%	15.3%	14.7%	15.2%	15.4%	15.6%
	Quintile 2	21.6%	21.4%	20.3%	20.1%	22.0%	22.6%	22.6%	26.0%	26.5%	23.7%
	Quintile 3	27.4%	28.0%	27.8%	24.8%	28.0%	30.7%	28.3%	29.4%	31.8%	30.3%
	Quintile 4	36.6%	35.4%	36.5%	33.5%	37.3%	35.9%	35.9%	37.2%	35.6%	35.7%
	Quintile 5	49.4%	48.9%	49.8%	47.3%	52.4%	48.1%	46.4%	47.7%	47.5%	46.7%

P.12 Placed 18 year old applicants from Northern Ireland by POLAR4 quintile: 6 days after A level results day

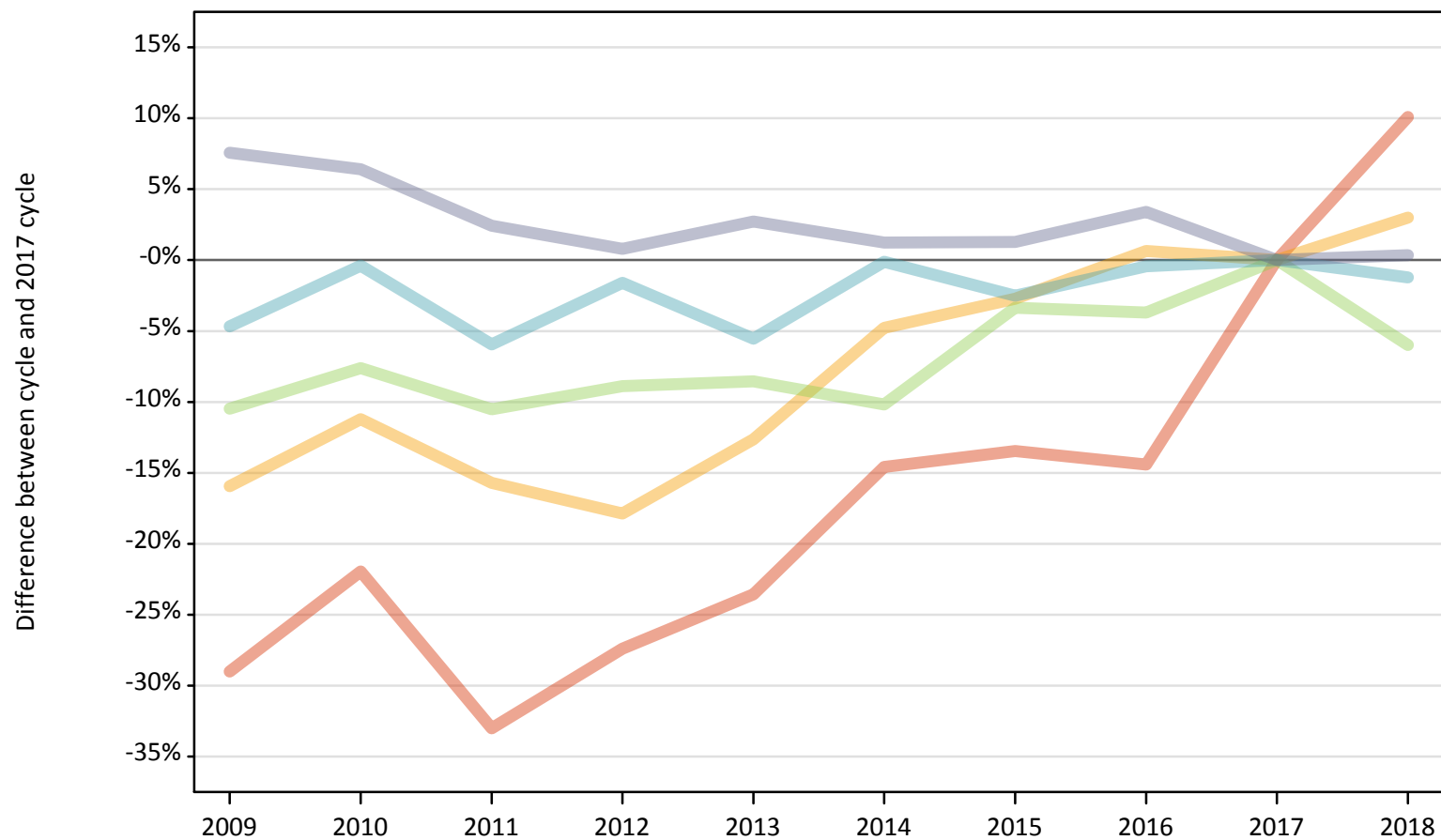
Placed 18 year old applicants: entry rate (indexed to 100 = Quintile 1)

Applicant Status	POLAR4	2009	2010	2011	2012	2013	2014	2015	2016	2017	2018
Placed	Quintile 1	100	100	100	100	100	100	100	100	100	100
	Quintile 2	192	160	167	168	175	148	153	171	172	151
	Quintile 3	244	210	229	207	222	201	192	194	206	194
	Quintile 4	326	266	300	279	297	235	244	245	230	228
	Quintile 5	440	367	409	394	416	315	315	314	307	299

P.13 Placed 18 year old applicants from Scotland by POLAR4 quintile: 6 days after A level results day

Placed 18 year old applicants: change relative to 2017 cycle totals

- Quintile 1
- Quintile 2
- Quintile 3
- Quintile 4
- Quintile 5



Note: The percentage change is not plotted in the above chart for groups with fewer than 30 placed applicants in any one cycle.

P.14 Placed 18 year old applicants from Scotland by POLAR4 quintile: 6 days after A level results day

Applicant Status	POLAR4	2009	2010	2011	2012	2013	2014	2015	2016	2017	2018
Placed	Quintile 1	440	490	420	450	480	530	540	530	620	690
	Quintile 2	1,180	1,240	1,180	1,150	1,220	1,330	1,360	1,410	1,400	1,440
	Quintile 3	2,140	2,210	2,140	2,180	2,180	2,140	2,310	2,300	2,390	2,240
	Quintile 4	3,220	3,360	3,180	3,320	3,190	3,370	3,290	3,360	3,380	3,340
	Quintile 5	7,270	7,190	6,920	6,810	6,940	6,840	6,840	6,990	6,760	6,780

P.15 Placed 18 year old applicants from Scotland by POLAR4 quintile: 6 days after A level results day

Placed 18 year old applicants: change relative to 2017 cycle totals

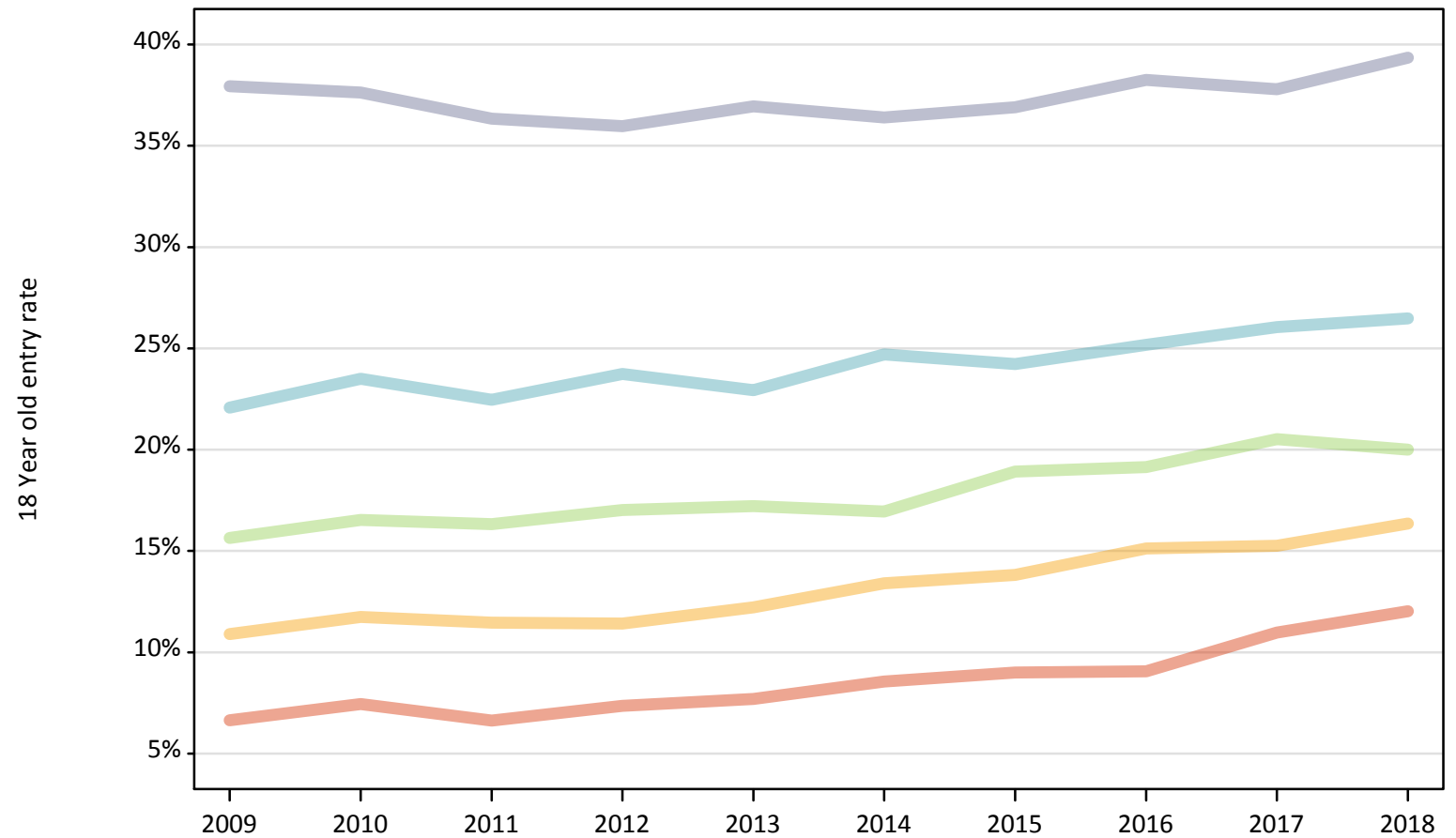
Applicant Status	POLAR4	2009	2010	2011	2012	2013	2014	2015	2016	2017	2018
Placed	Quintile 1	-29%	-22%	-33%	-27%	-24%	-15%	-13%	-14%	0%	10%
	Quintile 2	-16%	-11%	-16%	-18%	-13%	-5%	-3%	1%	0%	3%
	Quintile 3	-10%	-8%	-11%	-9%	-9%	-10%	-3%	-4%	0%	-6%
	Quintile 4	-5%	-0%	-6%	-2%	-6%	-0%	-3%	-0%	0%	-1%
	Quintile 5	8%	6%	2%	1%	3%	1%	1%	3%	0%	0%

Note: The percentage change is not recorded in the above table for groups with fewer than 10 placed applicants in that cycle or in the 2017 cycle.

P.16 Placed 18 year old applicants from Scotland by POLAR4 quintile: 6 days after A level results day

Placed 18 year old applicants: entry rate

- Quintile 1
- Quintile 2
- Quintile 3
- Quintile 4
- Quintile 5



P.17 Placed 18 year old applicants from Scotland by POLAR4 quintile: 6 days after A level results day

Placed 18 year old applicants: entry rate

Applicant Status	POLAR4	2009	2010	2011	2012	2013	2014	2015	2016	2017	2018
Placed	Quintile 1	6.6%	7.5%	6.6%	7.4%	7.7%	8.6%	9.0%	9.1%	11.0%	12.0%
	Quintile 2	10.9%	11.7%	11.5%	11.4%	12.2%	13.4%	13.8%	15.1%	15.3%	16.4%
	Quintile 3	15.6%	16.5%	16.3%	17.0%	17.2%	16.9%	18.9%	19.1%	20.5%	20.0%
	Quintile 4	22.1%	23.5%	22.5%	23.7%	22.9%	24.7%	24.2%	25.2%	26.0%	26.5%
	Quintile 5	37.9%	37.6%	36.3%	36.0%	36.9%	36.4%	36.9%	38.2%	37.8%	39.3%

P.18 Placed 18 year old applicants from Scotland by POLAR4 quintile: 6 days after A level results day

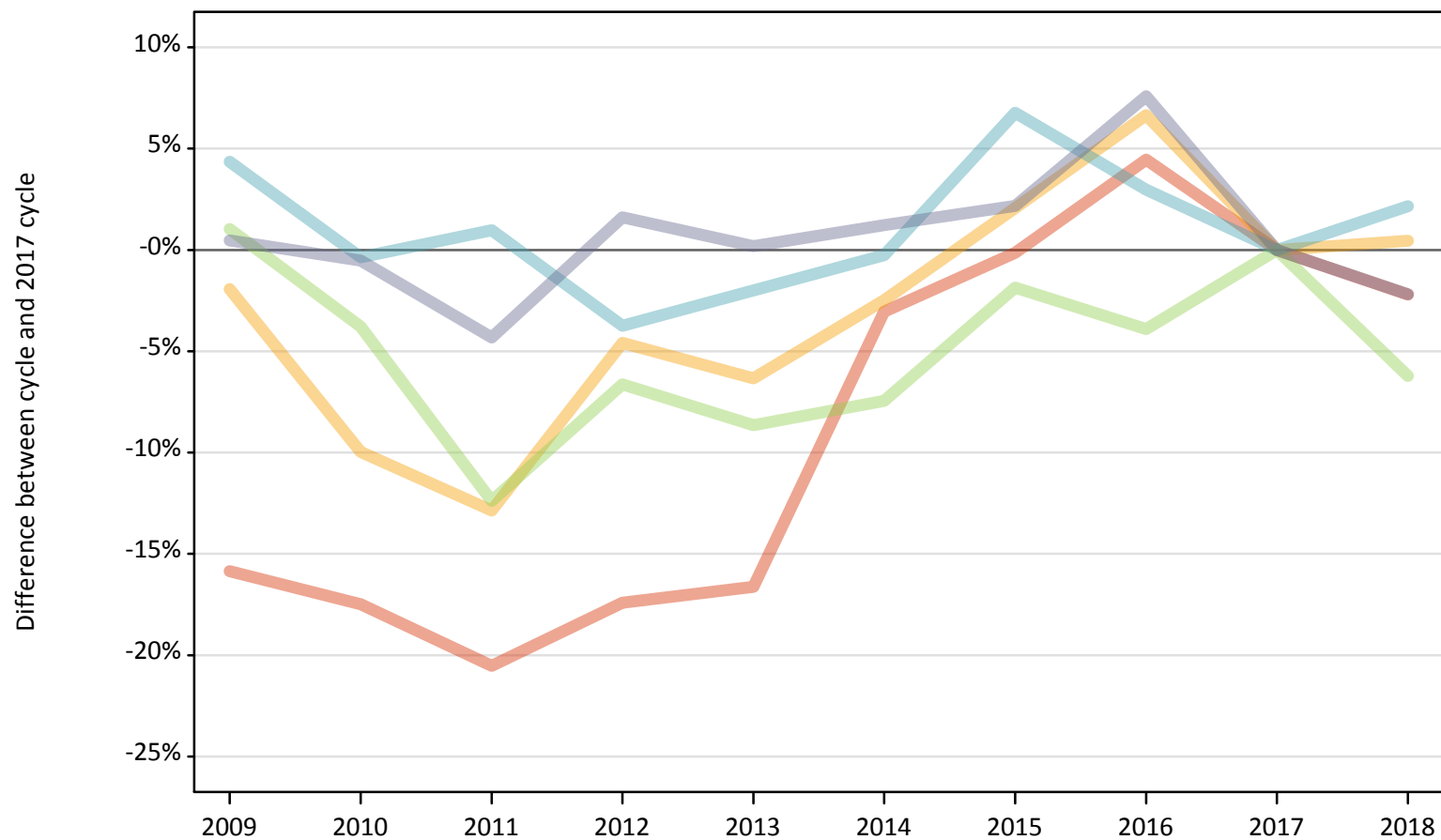
Placed 18 year old applicants: entry rate (indexed to 100 = Quintile 1)

Applicant Status	POLAR4	2009	2010	2011	2012	2013	2014	2015	2016	2017	2018
Placed	Quintile 1	100	100	100	100	100	100	100	100	100	100
	Quintile 2	164	158	173	155	159	157	154	167	139	136
	Quintile 3	236	222	246	232	224	198	210	211	187	166
	Quintile 4	333	315	339	323	298	289	269	278	237	220
	Quintile 5	571	505	548	489	480	425	410	422	344	327

P.19 Placed 18 year old applicants from Wales by POLAR4 quintile: 6 days after A level results day

Placed 18 year old applicants: change relative to 2017 cycle totals

- Quintile 1
- Quintile 2
- Quintile 3
- Quintile 4
- Quintile 5



Note: The percentage change is not plotted in the above chart for groups with fewer than 30 placed applicants in any one cycle.

P.20 Placed 18 year old applicants from Wales by POLAR4 quintile: 6 days after A level results day

Applicant Status	POLAR4	2009	2010	2011	2012	2013	2014	2015	2016	2017	2018
Placed	Quintile 1	1,190	1,170	1,120	1,170	1,180	1,370	1,410	1,480	1,410	1,380
	Quintile 2	2,140	1,960	1,900	2,080	2,040	2,120	2,220	2,320	2,180	2,190
	Quintile 3	2,460	2,340	2,130	2,270	2,220	2,250	2,390	2,340	2,430	2,280
	Quintile 4	2,040	1,940	1,970	1,880	1,910	1,950	2,080	2,010	1,950	1,990
	Quintile 5	2,120	2,100	2,020	2,140	2,110	2,140	2,160	2,270	2,110	2,060

P.21 Placed 18 year old applicants from Wales by POLAR4 quintile: 6 days after A level results day

Placed 18 year old applicants: change relative to 2017 cycle totals

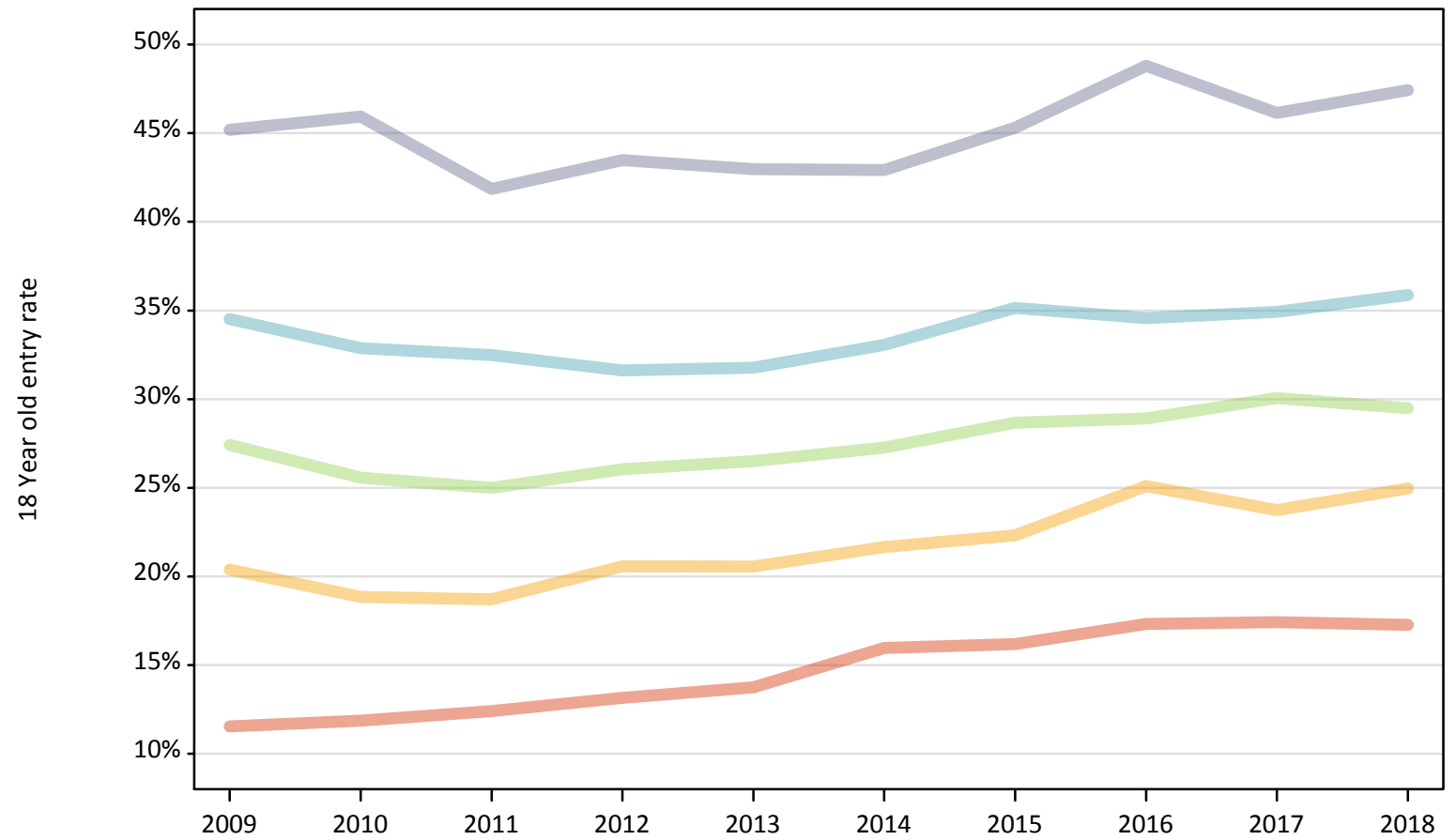
Applicant Status	POLAR4	2009	2010	2011	2012	2013	2014	2015	2016	2017	2018
Placed	Quintile 1	-16%	-17%	-21%	-17%	-17%	-3%	-0%	4%	0%	-2%
	Quintile 2	-2%	-10%	-13%	-5%	-6%	-2%	2%	7%	0%	0%
	Quintile 3	1%	-4%	-12%	-7%	-9%	-7%	-2%	-4%	0%	-6%
	Quintile 4	4%	-0%	1%	-4%	-2%	-0%	7%	3%	0%	2%
	Quintile 5	0%	-1%	-4%	2%	0%	1%	2%	8%	0%	-2%

Note: The percentage change is not recorded in the above table for groups with fewer than 10 placed applicants in that cycle or in the 2017 cycle.

P.22 Placed 18 year old applicants from Wales by POLAR4 quintile: 6 days after A level results day

Placed 18 year old applicants: entry rate

- Quintile 1
- Quintile 2
- Quintile 3
- Quintile 4
- Quintile 5



P.23 Placed 18 year old applicants from Wales by POLAR4 quintile: 6 days after A level results day

Placed 18 year old applicants: entry rate

Applicant Status	POLAR4	2009	2010	2011	2012	2013	2014	2015	2016	2017	2018
Placed	Quintile 1	11.5%	11.9%	12.4%	13.1%	13.8%	16.0%	16.2%	17.3%	17.4%	17.3%
	Quintile 2	20.4%	18.8%	18.7%	20.6%	20.6%	21.7%	22.3%	25.1%	23.7%	25.0%
	Quintile 3	27.4%	25.6%	25.0%	26.0%	26.5%	27.3%	28.7%	28.9%	30.1%	29.5%
	Quintile 4	34.5%	32.9%	32.5%	31.6%	31.8%	33.1%	35.1%	34.6%	34.9%	35.9%
	Quintile 5	45.2%	45.9%	41.9%	43.5%	43.0%	42.9%	45.3%	48.8%	46.1%	47.4%

P.24 Placed 18 year old applicants from Wales by POLAR4 quintile: 6 days after A level results day

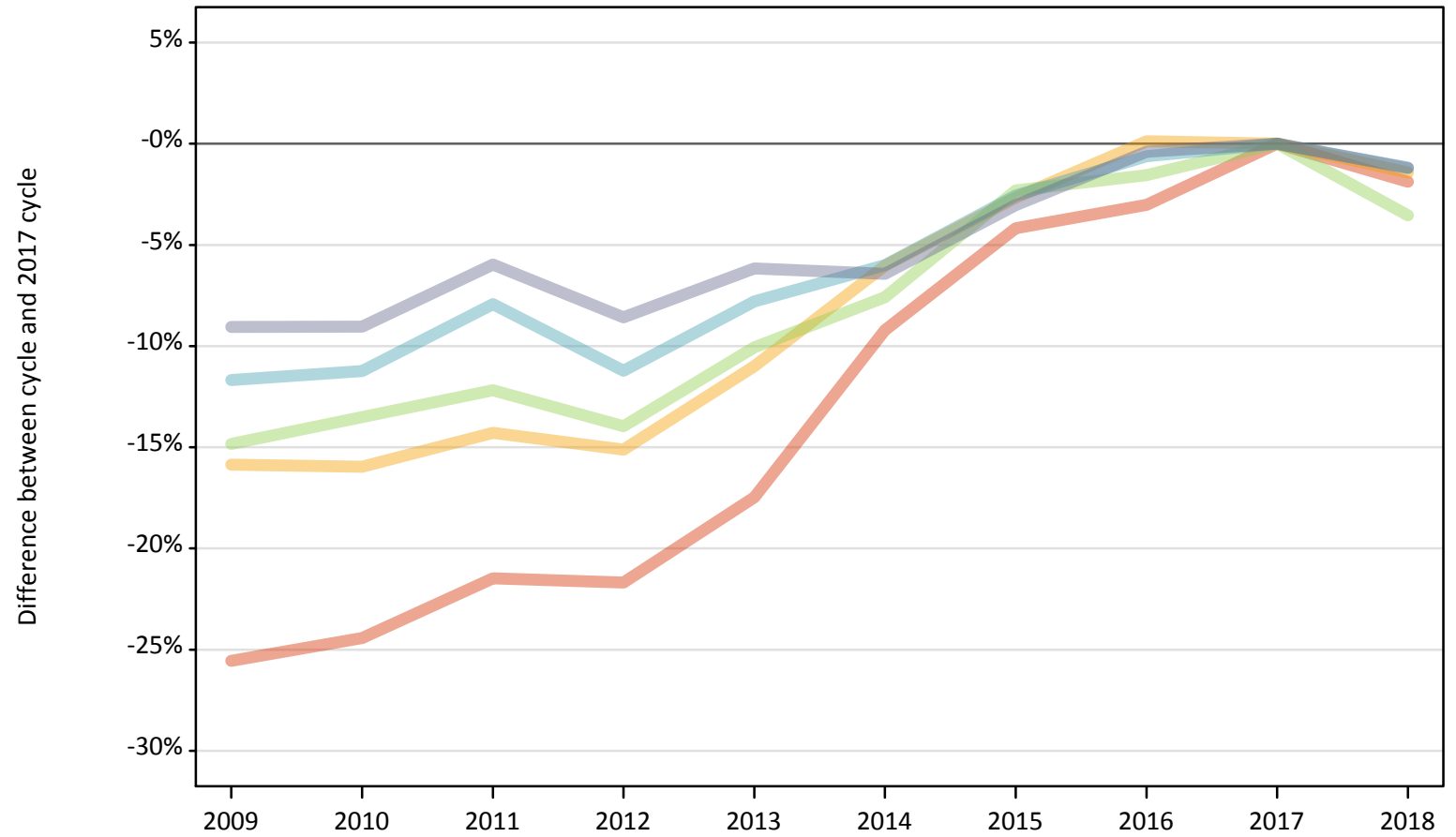
Placed 18 year old applicants: entry rate (indexed to 100 = Quintile 1)

Applicant Status	POLAR4	2009	2010	2011	2012	2013	2014	2015	2016	2017	2018
Placed	Quintile 1	100	100	100	100	100	100	100	100	100	100
	Quintile 2	177	159	151	157	149	136	138	145	136	145
	Quintile 3	238	216	202	198	193	171	177	167	173	171
	Quintile 4	299	277	262	241	231	207	217	200	201	208
	Quintile 5	392	387	338	331	313	269	280	282	265	275

P.25 Placed 18 year old applicants from the UK by POLAR4 quintile: 6 days after A level results day

Placed 18 year old applicants: change relative to 2017 cycle totals

- Quintile 1
- Quintile 2
- Quintile 3
- Quintile 4
- Quintile 5



Note: The percentage change is not plotted in the above chart for groups with fewer than 30 placed applicants in any one cycle.

P.26 Placed 18 year old applicants from the UK by POLAR4 quintile: 6 days after A level results day

Applicant Status	POLAR4	2009	2010	2011	2012	2013	2014	2015	2016	2017	2018
Placed	Quintile 1	18,310	18,590	19,310	19,260	20,300	22,330	23,570	23,860	24,600	24,130
	Quintile 2	29,130	29,090	29,680	29,390	30,810	32,530	33,700	34,660	34,620	34,130
	Quintile 3	37,290	37,870	38,450	37,670	39,380	40,460	42,780	43,100	43,780	42,240
	Quintile 4	47,080	47,320	49,090	47,330	49,160	50,110	51,950	52,980	53,310	52,660
	Quintile 5	70,820	70,830	73,220	71,190	73,070	72,870	75,510	77,570	77,870	76,960

P.27 Placed 18 year old applicants from the UK by POLAR4 quintile: 6 days after A level results day

Placed 18 year old applicants: change relative to 2017 cycle totals

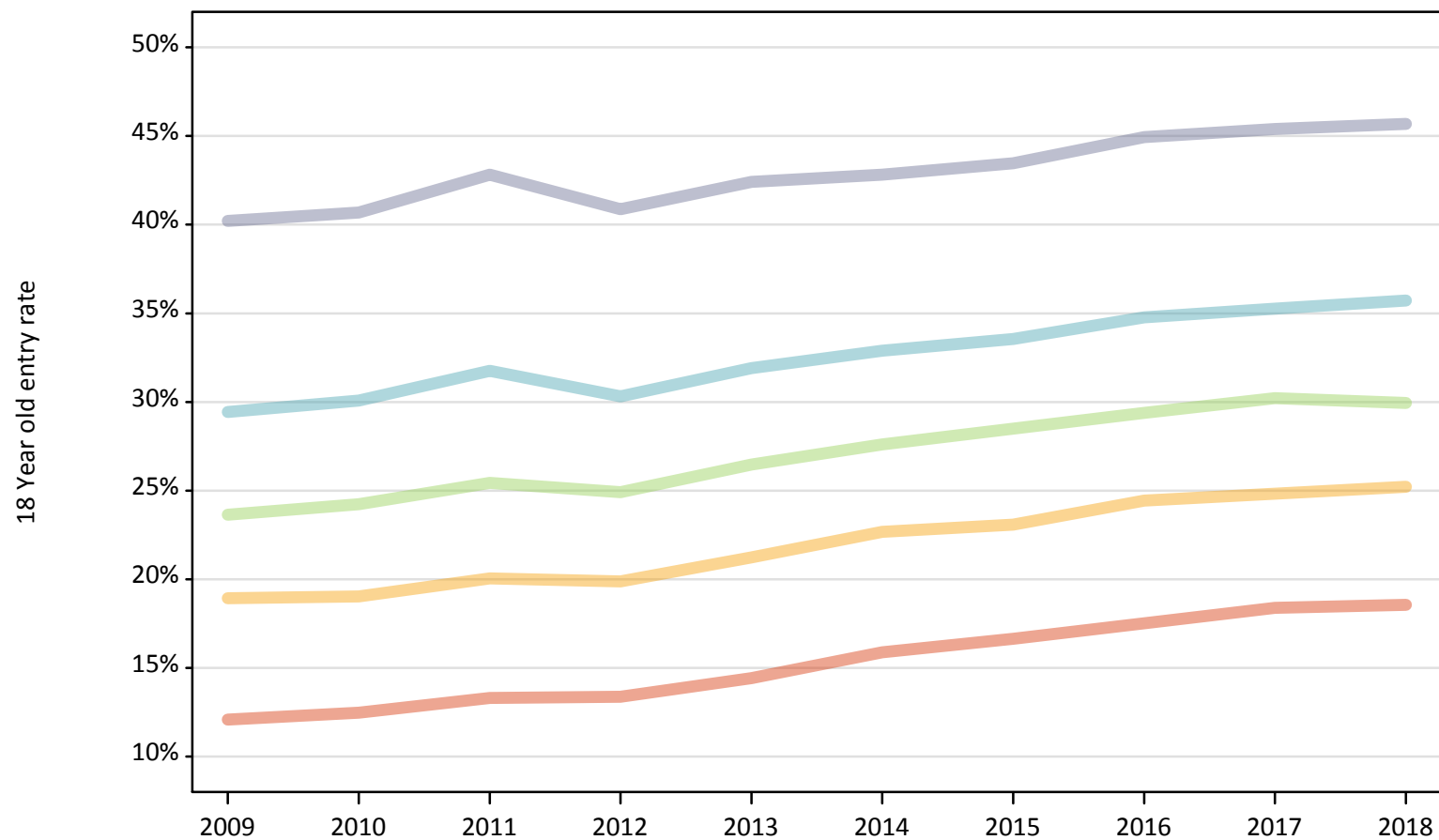
Applicant Status	POLAR4	2009	2010	2011	2012	2013	2014	2015	2016	2017	2018
Placed	Quintile 1	-26%	-24%	-21%	-22%	-17%	-9%	-4%	-3%	0%	-2%
	Quintile 2	-16%	-16%	-14%	-15%	-11%	-6%	-3%	0%	0%	-1%
	Quintile 3	-15%	-14%	-12%	-14%	-10%	-8%	-2%	-2%	0%	-4%
	Quintile 4	-12%	-11%	-8%	-11%	-8%	-6%	-3%	-1%	0%	-1%
	Quintile 5	-9%	-9%	-6%	-9%	-6%	-6%	-3%	-0%	0%	-1%

Note: The percentage change is not recorded in the above table for groups with fewer than 10 placed applicants in that cycle or in the 2017 cycle.

P.28 Placed 18 year old applicants from the UK by POLAR4 quintile: 6 days after A level results day

Placed 18 year old applicants: entry rate

- Quintile 1
- Quintile 2
- Quintile 3
- Quintile 4
- Quintile 5



P.29 Placed 18 year old applicants from the UK by POLAR4 quintile: 6 days after A level results day

Placed 18 year old applicants: entry rate

Applicant Status	POLAR4	2009	2010	2011	2012	2013	2014	2015	2016	2017	2018
Placed	Quintile 1	12.1%	12.5%	13.3%	13.4%	14.4%	15.9%	16.6%	17.5%	18.4%	18.6%
	Quintile 2	18.9%	19.0%	20.0%	19.9%	21.2%	22.7%	23.1%	24.4%	24.8%	25.2%
	Quintile 3	23.6%	24.2%	25.4%	24.9%	26.5%	27.6%	28.5%	29.4%	30.2%	29.9%
	Quintile 4	29.4%	30.1%	31.7%	30.3%	31.9%	32.9%	33.6%	34.8%	35.3%	35.7%
	Quintile 5	40.2%	40.7%	42.8%	40.9%	42.4%	42.8%	43.5%	44.9%	45.4%	45.7%

P.30 Placed 18 year old applicants from the UK by POLAR4 quintile: 6 days after A level results day

Placed 18 year old applicants: entry rate (indexed to 100 = Quintile 1)

Applicant Status	POLAR4	2009	2010	2011	2012	2013	2014	2015	2016	2017	2018
Placed	Quintile 1	100	100	100	100	100	100	100	100	100	100
	Quintile 2	157	153	151	149	147	143	139	139	135	136
	Quintile 3	196	194	191	186	184	174	171	168	164	161
	Quintile 4	244	241	239	227	221	207	202	198	192	192
	Quintile 5	333	326	322	306	294	270	261	256	247	246