

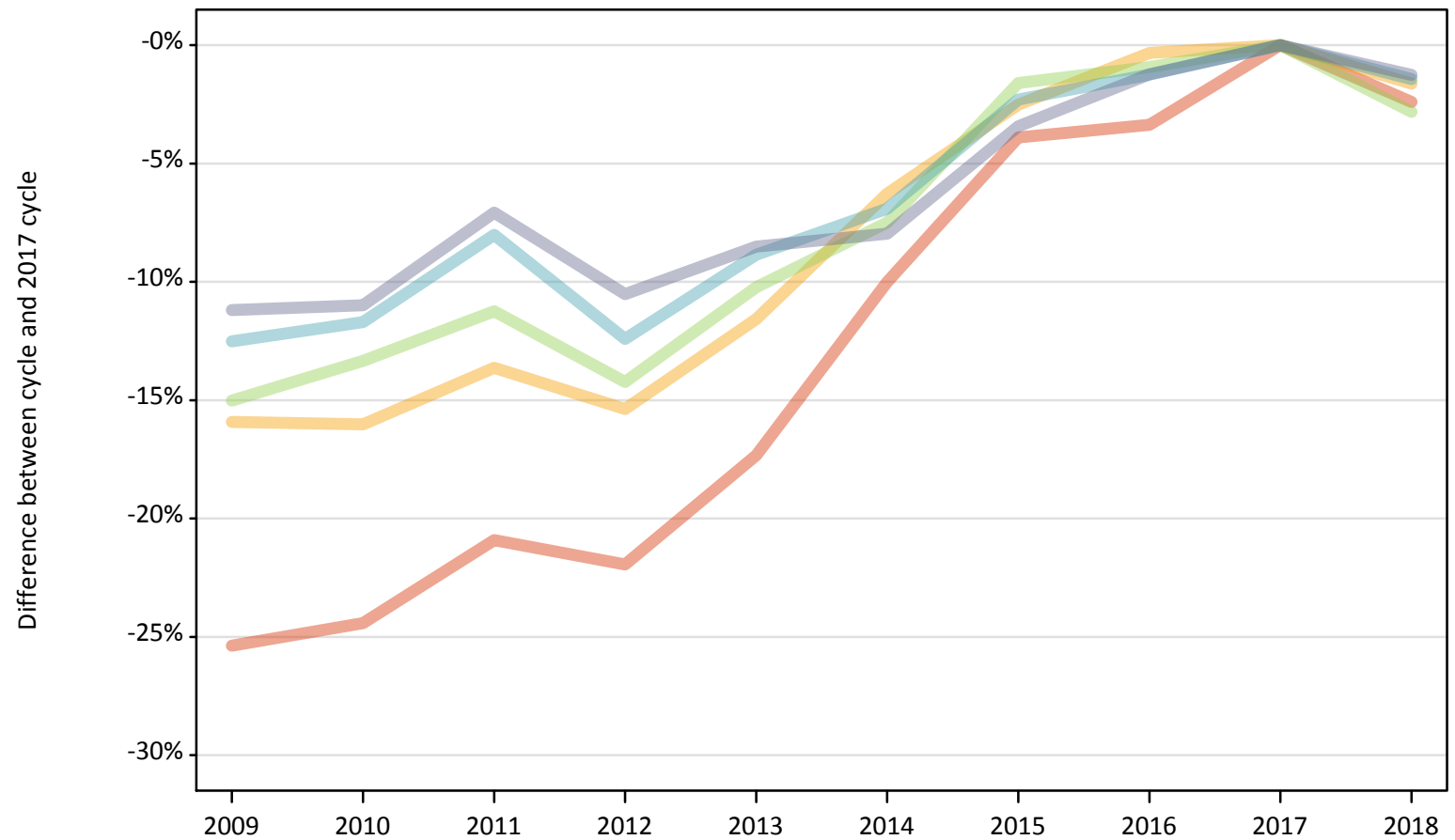
Daily Clearing Analysis: POLAR4

Analysis at 00:05 on Thursday 30 August 2018 (14 days after A level results day)

P.1 Placed 18 year old applicants from England by POLAR4 quintile: 14 days after A level results day

Placed 18 year old applicants: change relative to 2017 cycle totals

- Quintile 1
- Quintile 2
- Quintile 3
- Quintile 4
- Quintile 5



Note: The percentage change is not plotted in the above chart for groups with fewer than 30 placed applicants in any one cycle.

P.2 Placed 18 year old applicants from England by POLAR4 quintile: 14 days after A level results day

Applicant Status	POLAR4	2009	2010	2011	2012	2013	2014	2015	2016	2017	2018
Placed	Quintile 1	16,780	17,000	17,790	17,550	18,590	20,240	21,610	21,730	22,490	21,950
	Quintile 2	26,100	26,060	26,800	26,270	27,450	29,090	30,250	30,930	31,040	30,530
	Quintile 3	32,610	33,260	34,060	32,920	34,450	35,500	37,760	38,020	38,380	37,290
	Quintile 4	41,090	41,470	43,200	41,130	42,800	43,720	45,890	46,380	46,960	46,290
	Quintile 5	59,280	59,410	62,020	59,720	61,070	61,430	64,460	65,920	66,740	65,910

P.3 Placed 18 year old applicants from England by POLAR4 quintile: 14 days after A level results day

Placed 18 year old applicants: change relative to 2017 cycle totals

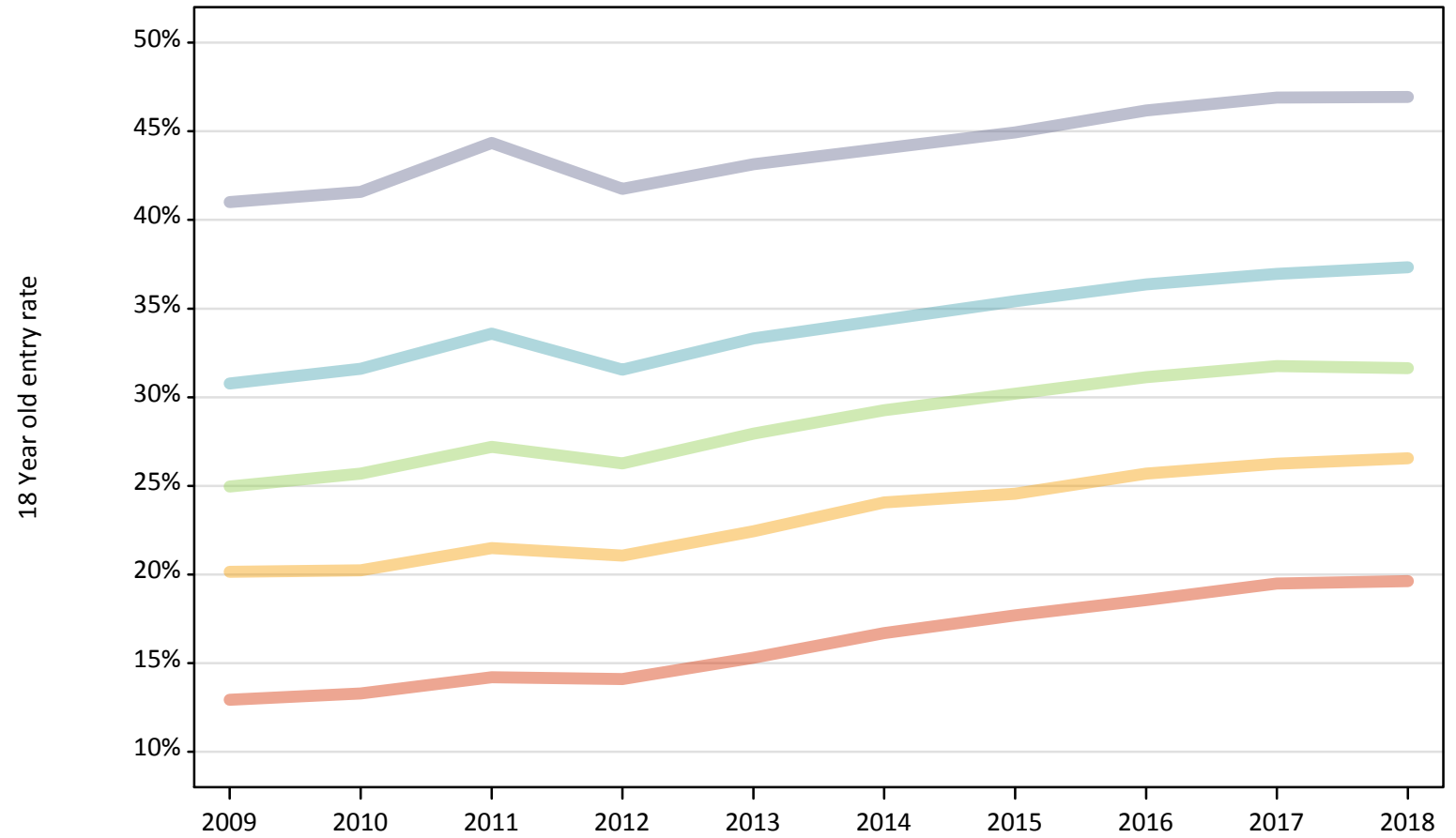
Applicant Status	POLAR4	2009	2010	2011	2012	2013	2014	2015	2016	2017	2018
Placed	Quintile 1	-25%	-24%	-21%	-22%	-17%	-10%	-4%	-3%	0%	-2%
	Quintile 2	-16%	-16%	-14%	-15%	-12%	-6%	-3%	-0%	0%	-2%
	Quintile 3	-15%	-13%	-11%	-14%	-10%	-7%	-2%	-1%	0%	-3%
	Quintile 4	-13%	-12%	-8%	-12%	-9%	-7%	-2%	-1%	0%	-1%
	Quintile 5	-11%	-11%	-7%	-11%	-9%	-8%	-3%	-1%	0%	-1%

Note: The percentage change is not recorded in the above table for groups with fewer than 10 placed applicants in that cycle or in the 2017 cycle.

P.4 Placed 18 year old applicants from England by POLAR4 quintile: 14 days after A level results day

Placed 18 year old applicants: entry rate

- Quintile 1
- Quintile 2
- Quintile 3
- Quintile 4
- Quintile 5



P.5 Placed 18 year old applicants from England by POLAR4 quintile: 14 days after A level results day

Placed 18 year old applicants: entry rate

Applicant Status	POLAR4	2009	2010	2011	2012	2013	2014	2015	2016	2017	2018
Placed	Quintile 1	12.9%	13.3%	14.2%	14.1%	15.3%	16.7%	17.7%	18.6%	19.5%	19.6%
	Quintile 2	20.1%	20.2%	21.5%	21.1%	22.4%	24.1%	24.5%	25.7%	26.3%	26.6%
	Quintile 3	25.0%	25.7%	27.2%	26.3%	27.9%	29.3%	30.2%	31.1%	31.8%	31.6%
	Quintile 4	30.8%	31.6%	33.6%	31.6%	33.3%	34.4%	35.4%	36.4%	37.0%	37.3%
	Quintile 5	41.0%	41.6%	44.3%	41.8%	43.1%	44.0%	44.9%	46.2%	46.9%	46.9%

P.6 Placed 18 year old applicants from England by POLAR4 quintile: 14 days after A level results day

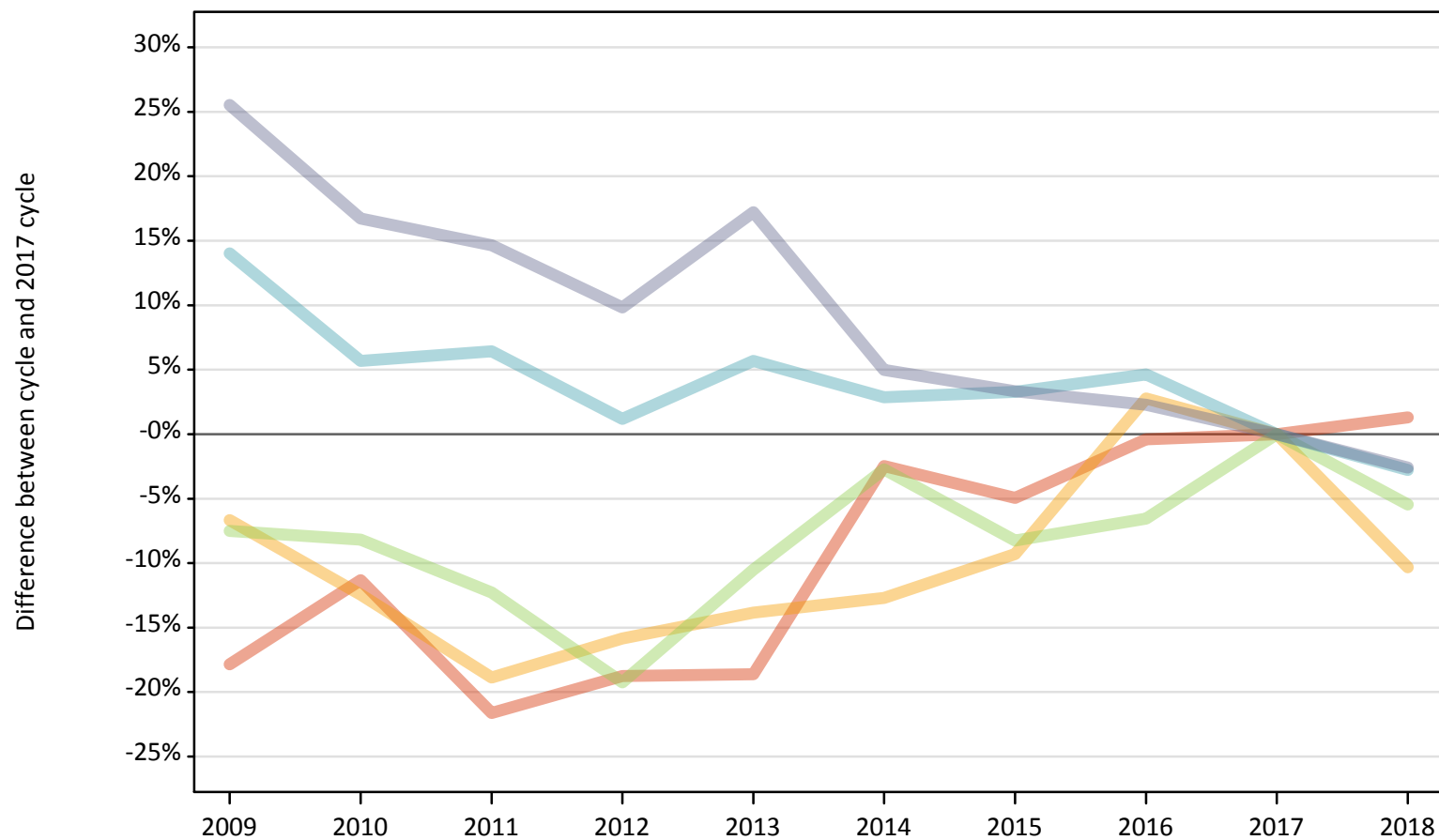
Placed 18 year old applicants: entry rate (indexed to 100 = Quintile 1)

Applicant Status	POLAR4	2009	2010	2011	2012	2013	2014	2015	2016	2017	2018
Placed	Quintile 1	100	100	100	100	100	100	100	100	100	100
	Quintile 2	156	152	151	149	147	144	139	138	135	135
	Quintile 3	193	193	191	186	182	175	171	168	163	161
	Quintile 4	238	238	236	224	218	206	200	196	190	190
	Quintile 5	317	313	312	296	282	264	254	249	241	239

P.7 Placed 18 year old applicants from Northern Ireland by POLAR4 quintile: 14 days after A level results day

Placed 18 year old applicants: change relative to 2017 cycle totals

- Quintile 1
- Quintile 2
- Quintile 3
- Quintile 4
- Quintile 5



Note: The percentage change is not plotted in the above chart for groups with fewer than 30 placed applicants in any one cycle.

P.8 Placed 18 year old applicants from Northern Ireland by POLAR4 quintile: 14 days after A level results day

Applicant Status	POLAR4	2009	2010	2011	2012	2013	2014	2015	2016	2017	2018
Placed	Quintile 1	630	680	600	620	630	750	730	770	770	780
	Quintile 2	740	700	650	670	690	690	720	820	800	710
	Quintile 3	1,360	1,350	1,290	1,180	1,310	1,430	1,350	1,370	1,470	1,390
	Quintile 4	2,390	2,220	2,230	2,120	2,220	2,160	2,170	2,190	2,100	2,040
	Quintile 5	4,180	3,890	3,820	3,660	3,900	3,490	3,440	3,400	3,330	3,240

P.9 Placed 18 year old applicants from Northern Ireland by POLAR4 quintile: 14 days after A level results day

Placed 18 year old applicants: change relative to 2017 cycle totals

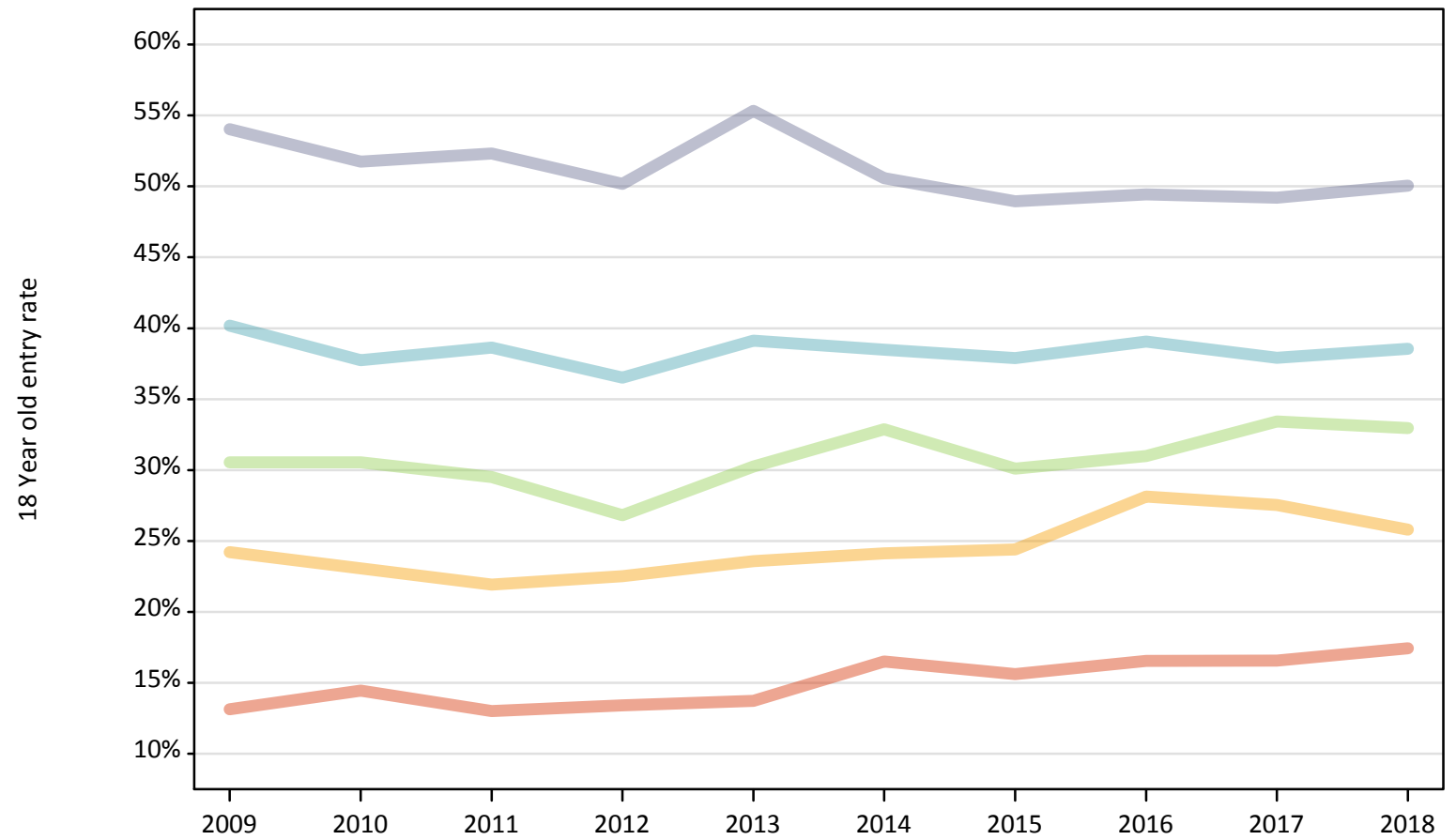
Applicant Status	POLAR4	2009	2010	2011	2012	2013	2014	2015	2016	2017	2018
Placed	Quintile 1	-18%	-11%	-22%	-19%	-19%	-2%	-5%	-0%	0%	1%
	Quintile 2	-7%	-12%	-19%	-16%	-14%	-13%	-9%	3%	0%	-10%
	Quintile 3	-8%	-8%	-12%	-19%	-11%	-3%	-8%	-7%	0%	-5%
	Quintile 4	14%	6%	6%	1%	6%	3%	3%	5%	0%	-3%
	Quintile 5	26%	17%	15%	10%	17%	5%	3%	2%	0%	-3%

Note: The percentage change is not recorded in the above table for groups with fewer than 10 placed applicants in that cycle or in the 2017 cycle.

P.10 Placed 18 year old applicants from Northern Ireland by POLAR4 quintile: 14 days after A level results day

Placed 18 year old applicants: entry rate

- Quintile 1
- Quintile 2
- Quintile 3
- Quintile 4
- Quintile 5



P.11 Placed 18 year old applicants from Northern Ireland by POLAR4 quintile: 14 days after A level results day

Placed 18 year old applicants: entry rate

Applicant Status	POLAR4	2009	2010	2011	2012	2013	2014	2015	2016	2017	2018
Placed	Quintile 1	13.1%	14.5%	13.0%	13.4%	13.7%	16.5%	15.6%	16.5%	16.6%	17.4%
	Quintile 2	24.2%	23.1%	21.9%	22.5%	23.6%	24.1%	24.4%	28.1%	27.5%	25.8%
	Quintile 3	30.5%	30.5%	29.5%	26.8%	30.2%	32.9%	30.1%	31.0%	33.4%	33.0%
	Quintile 4	40.2%	37.8%	38.6%	36.5%	39.1%	38.5%	37.9%	39.0%	37.9%	38.6%
	Quintile 5	54.0%	51.7%	52.3%	50.2%	55.3%	50.6%	49.0%	49.4%	49.2%	50.1%

P.12 Placed 18 year old applicants from Northern Ireland by POLAR4 quintile: 14 days after A level results day

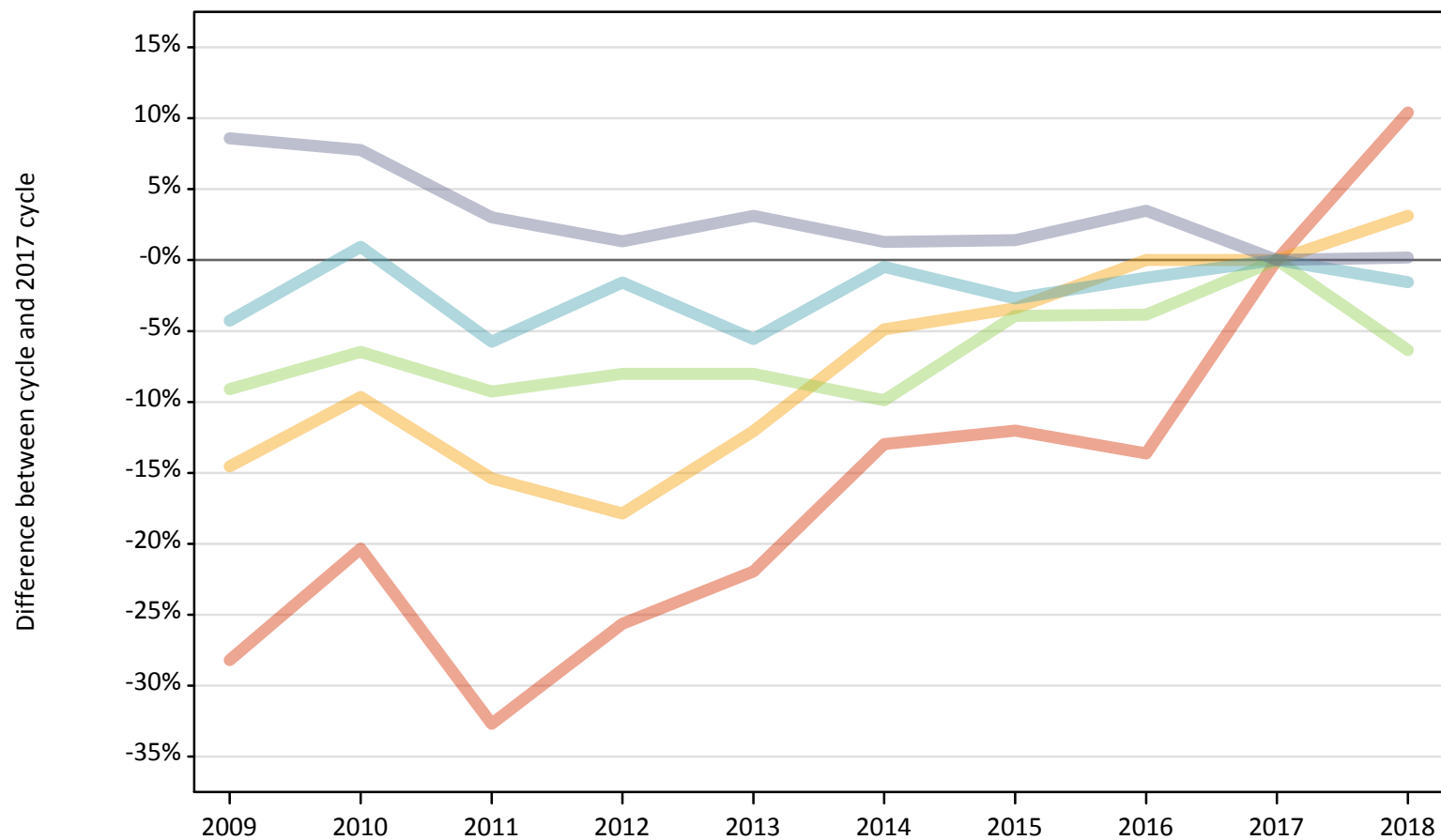
Placed 18 year old applicants: entry rate (indexed to 100 = Quintile 1)

Applicant Status	POLAR4	2009	2010	2011	2012	2013	2014	2015	2016	2017	2018
Placed	Quintile 1	100	100	100	100	100	100	100	100	100	100
	Quintile 2	184	160	169	168	172	146	156	170	166	148
	Quintile 3	233	211	227	200	220	199	193	187	202	189
	Quintile 4	306	261	297	272	285	233	243	236	229	221
	Quintile 5	412	358	402	374	403	307	313	299	297	287

P.13 Placed 18 year old applicants from Scotland by POLAR4 quintile: 14 days after A level results day

Placed 18 year old applicants: change relative to 2017 cycle totals

- Quintile 1
- Quintile 2
- Quintile 3
- Quintile 4
- Quintile 5



Note: The percentage change is not plotted in the above chart for groups with fewer than 30 placed applicants in any one cycle.

P.14 Placed 18 year old applicants from Scotland by POLAR4 quintile: 14 days after A level results day

Applicant Status	POLAR4	2009	2010	2011	2012	2013	2014	2015	2016	2017	2018
Placed	Quintile 1	450	500	420	460	490	540	550	540	620	690
	Quintile 2	1,210	1,270	1,190	1,160	1,240	1,340	1,360	1,410	1,410	1,450
	Quintile 3	2,180	2,240	2,170	2,200	2,200	2,160	2,300	2,300	2,400	2,240
	Quintile 4	3,260	3,440	3,210	3,350	3,210	3,390	3,310	3,360	3,400	3,350
	Quintile 5	7,350	7,290	6,970	6,860	6,980	6,850	6,860	7,000	6,770	6,780

P.15 Placed 18 year old applicants from Scotland by POLAR4 quintile: 14 days after A level results day

Placed 18 year old applicants: change relative to 2017 cycle totals

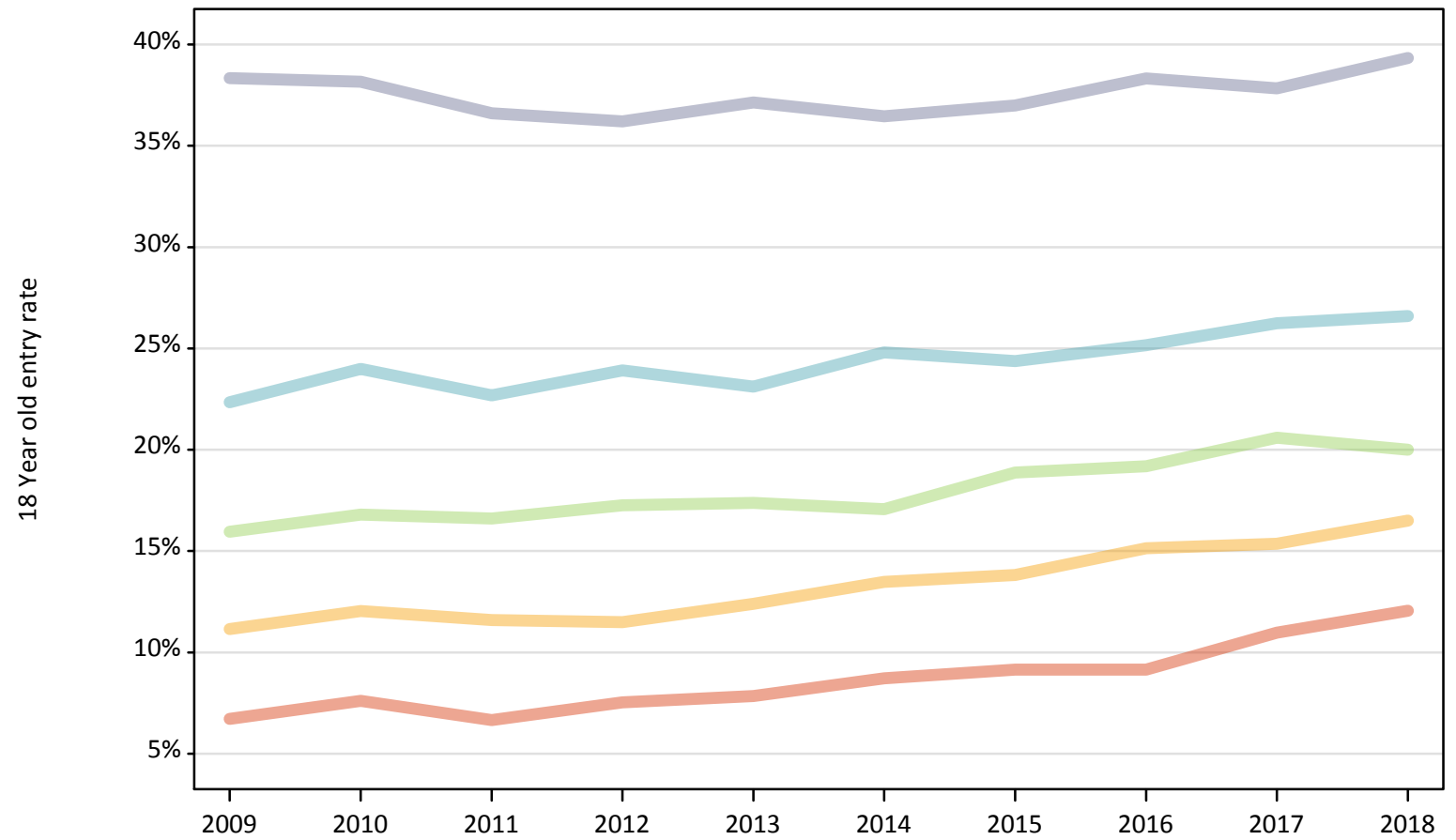
Applicant Status	POLAR4	2009	2010	2011	2012	2013	2014	2015	2016	2017	2018
Placed	Quintile 1	-28%	-20%	-33%	-26%	-22%	-13%	-12%	-14%	0%	10%
	Quintile 2	-15%	-10%	-15%	-18%	-12%	-5%	-3%	0%	0%	3%
	Quintile 3	-9%	-6%	-9%	-8%	-8%	-10%	-4%	-4%	0%	-6%
	Quintile 4	-4%	1%	-6%	-2%	-6%	-0%	-3%	-1%	0%	-2%
	Quintile 5	9%	8%	3%	1%	3%	1%	1%	3%	0%	0%

Note: The percentage change is not recorded in the above table for groups with fewer than 10 placed applicants in that cycle or in the 2017 cycle.

P.16 Placed 18 year old applicants from Scotland by POLAR4 quintile: 14 days after A level results day

Placed 18 year old applicants: entry rate

- Quintile 1
- Quintile 2
- Quintile 3
- Quintile 4
- Quintile 5



P.17 Placed 18 year old applicants from Scotland by POLAR4 quintile: 14 days after A level results day

Placed 18 year old applicants: entry rate

Applicant Status	POLAR4	2009	2010	2011	2012	2013	2014	2015	2016	2017	2018
Placed	Quintile 1	6.7%	7.6%	6.7%	7.5%	7.9%	8.7%	9.1%	9.1%	11.0%	12.1%
	Quintile 2	11.2%	12.0%	11.6%	11.5%	12.4%	13.5%	13.8%	15.1%	15.4%	16.5%
	Quintile 3	15.9%	16.8%	16.6%	17.3%	17.4%	17.1%	18.9%	19.2%	20.6%	20.0%
	Quintile 4	22.4%	24.0%	22.7%	23.9%	23.1%	24.8%	24.4%	25.2%	26.2%	26.6%
	Quintile 5	38.3%	38.2%	36.6%	36.2%	37.1%	36.5%	37.0%	38.3%	37.8%	39.3%

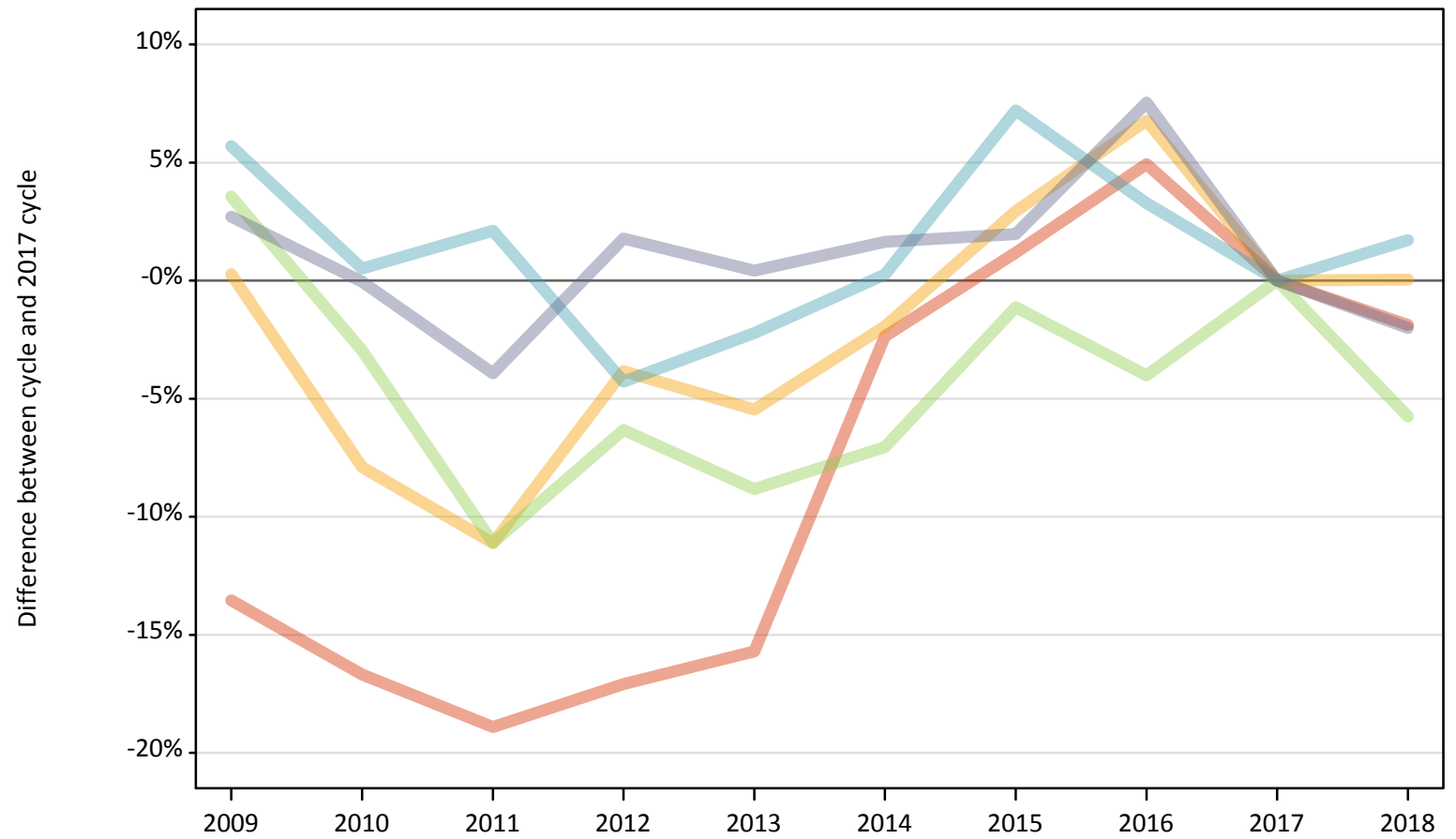
P.18 Placed 18 year old applicants from Scotland by POLAR4 quintile: 14 days after A level results day

Placed 18 year old applicants: entry rate (indexed to 100 = Quintile 1)

Applicant Status	POLAR4	2009	2010	2011	2012	2013	2014	2015	2016	2017	2018
Placed	Quintile 1	100	100	100	100	100	100	100	100	100	100
	Quintile 2	166	158	174	153	158	155	151	165	140	137
	Quintile 3	238	221	249	229	221	196	206	210	188	166
	Quintile 4	333	315	341	318	294	285	266	275	239	220
	Quintile 5	571	502	549	481	473	418	404	419	345	326

P.19 Placed 18 year old applicants from Wales by POLAR4 quintile: 14 days after A level results day
Placed 18 year old applicants: change relative to 2017 cycle totals

- Quintile 1
- Quintile 2
- Quintile 3
- Quintile 4
- Quintile 5



Note: The percentage change is not plotted in the above chart for groups with fewer than 30 placed applicants in any one cycle.

P.20 Placed 18 year old applicants from Wales by POLAR4 quintile: 14 days after A level results day

Applicant Status	POLAR4	2009	2010	2011	2012	2013	2014	2015	2016	2017	2018
Placed	Quintile 1	1,240	1,200	1,170	1,190	1,210	1,410	1,460	1,510	1,440	1,410
	Quintile 2	2,220	2,040	1,970	2,130	2,090	2,170	2,280	2,360	2,210	2,210
	Quintile 3	2,560	2,400	2,190	2,310	2,250	2,290	2,440	2,370	2,470	2,330
	Quintile 4	2,100	2,000	2,030	1,900	1,940	1,990	2,130	2,050	1,990	2,020
	Quintile 5	2,200	2,140	2,050	2,180	2,150	2,170	2,180	2,300	2,140	2,090

P.21 Placed 18 year old applicants from Wales by POLAR4 quintile: 14 days after A level results day

Placed 18 year old applicants: change relative to 2017 cycle totals

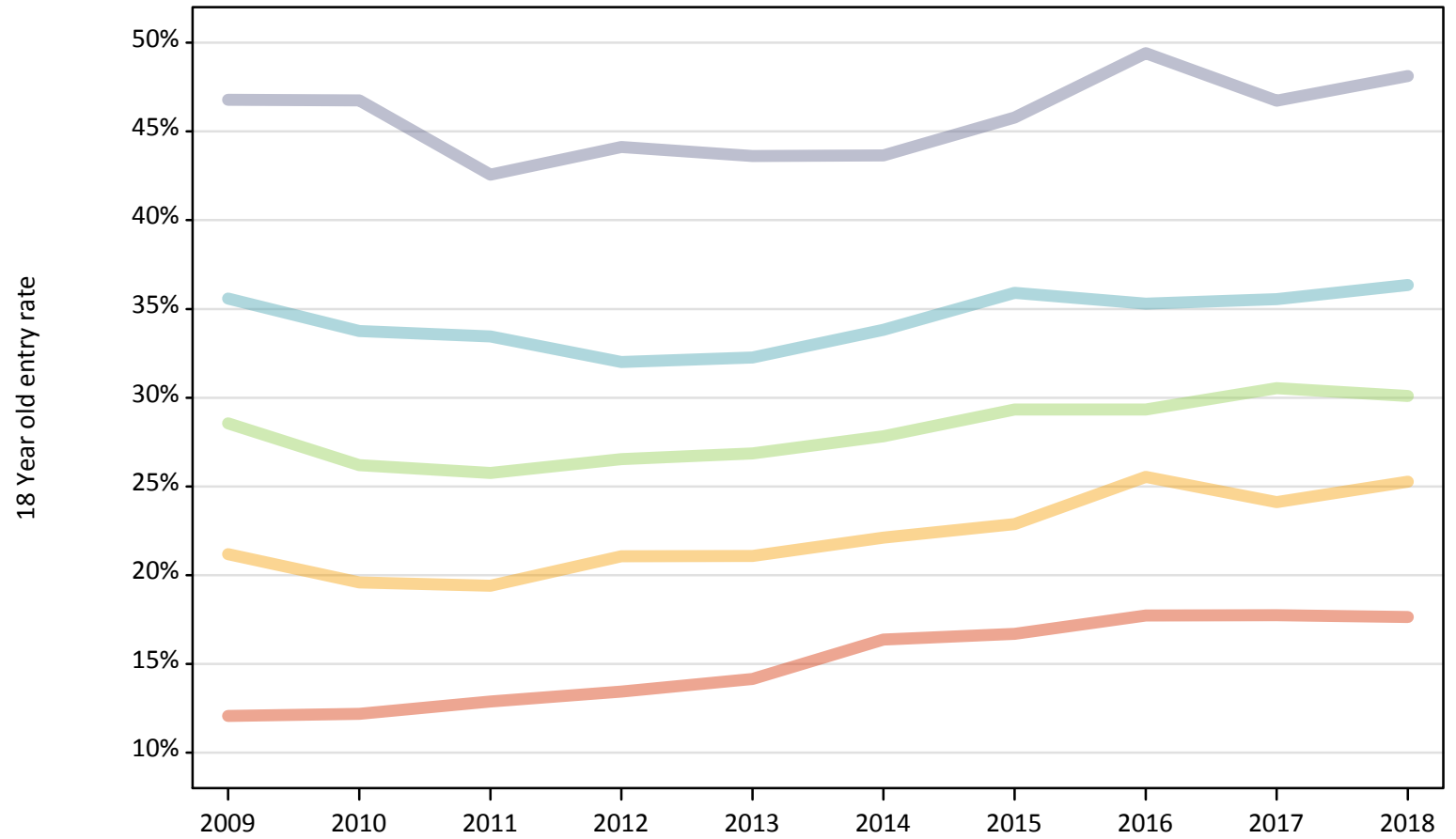
Applicant Status	POLAR4	2009	2010	2011	2012	2013	2014	2015	2016	2017	2018
Placed	Quintile 1	-14%	-17%	-19%	-17%	-16%	-2%	1%	5%	0%	-2%
	Quintile 2	0%	-8%	-11%	-4%	-5%	-2%	3%	7%	0%	0%
	Quintile 3	4%	-3%	-11%	-6%	-9%	-7%	-1%	-4%	0%	-6%
	Quintile 4	6%	1%	2%	-4%	-2%	0%	7%	3%	0%	2%
	Quintile 5	3%	-0%	-4%	2%	0%	2%	2%	8%	0%	-2%

Note: The percentage change is not recorded in the above table for groups with fewer than 10 placed applicants in that cycle or in the 2017 cycle.

P.22 Placed 18 year old applicants from Wales by POLAR4 quintile: 14 days after A level results day

Placed 18 year old applicants: entry rate

- Quintile 1
- Quintile 2
- Quintile 3
- Quintile 4
- Quintile 5



P.23 Placed 18 year old applicants from Wales by POLAR4 quintile: 14 days after A level results day

Placed 18 year old applicants: entry rate

Applicant Status	POLAR4	2009	2010	2011	2012	2013	2014	2015	2016	2017	2018
Placed	Quintile 1	12.1%	12.2%	12.9%	13.4%	14.2%	16.4%	16.7%	17.7%	17.7%	17.6%
	Quintile 2	21.2%	19.6%	19.4%	21.1%	21.1%	22.1%	22.9%	25.5%	24.1%	25.3%
	Quintile 3	28.6%	26.2%	25.8%	26.5%	26.9%	27.8%	29.3%	29.3%	30.5%	30.1%
	Quintile 4	35.6%	33.7%	33.4%	32.0%	32.3%	33.8%	35.9%	35.3%	35.6%	36.4%
	Quintile 5	46.8%	46.8%	42.6%	44.1%	43.6%	43.6%	45.8%	49.4%	46.7%	48.1%

P.24 Placed 18 year old applicants from Wales by POLAR4 quintile: 14 days after A level results day

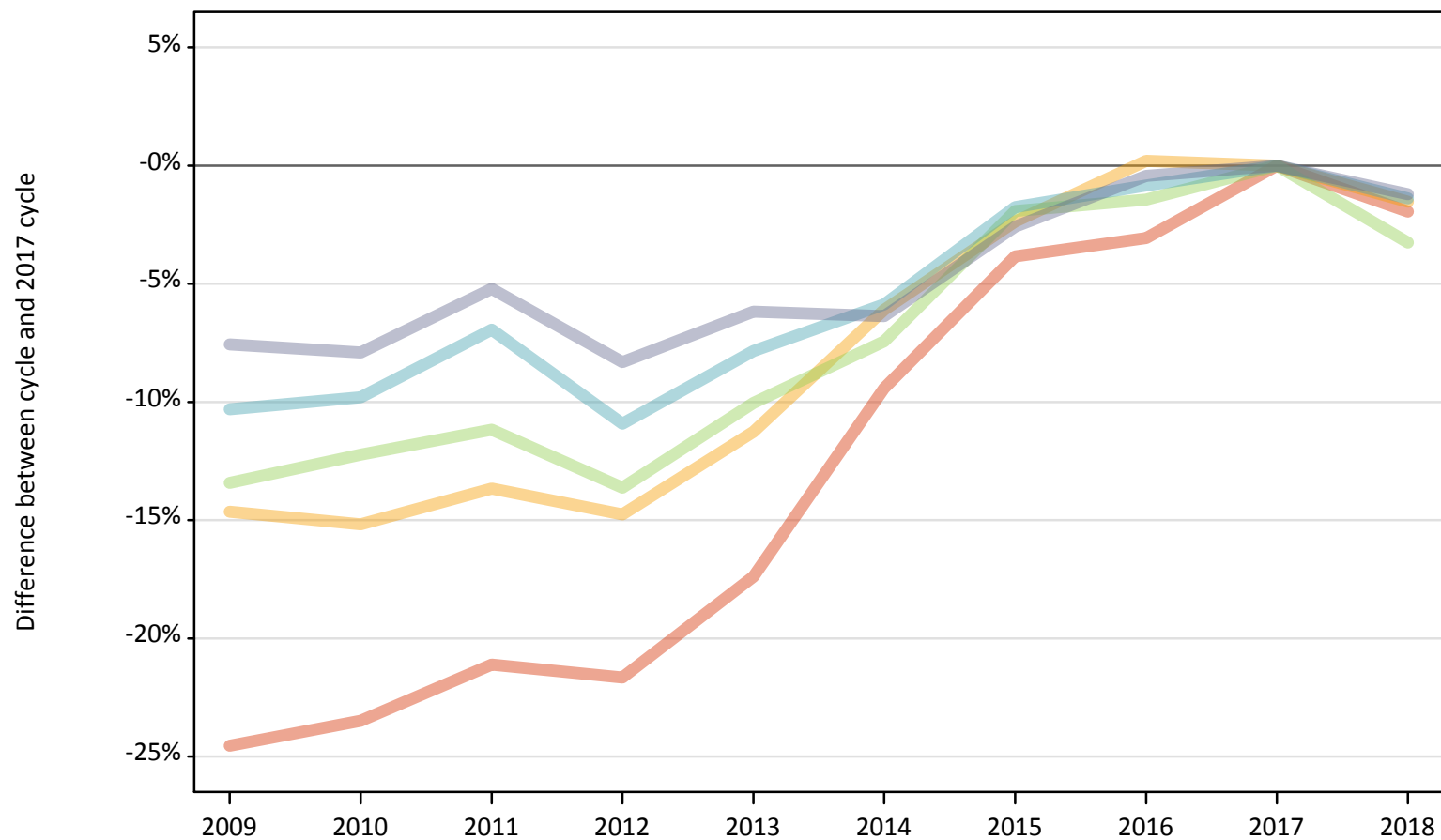
Placed 18 year old applicants: entry rate (indexed to 100 = Quintile 1)

Applicant Status	POLAR4	2009	2010	2011	2012	2013	2014	2015	2016	2017	2018
Placed	Quintile 1	100	100	100	100	100	100	100	100	100	100
	Quintile 2	176	161	150	157	149	135	137	144	136	143
	Quintile 3	237	215	200	198	190	170	176	165	172	170
	Quintile 4	295	277	260	238	228	207	215	199	200	206
	Quintile 5	388	383	330	328	308	266	274	279	263	273

P.25 Placed 18 year old applicants from the UK by POLAR4 quintile: 14 days after A level results day

Placed 18 year old applicants: change relative to 2017 cycle totals

- Quintile 1
- Quintile 2
- Quintile 3
- Quintile 4
- Quintile 5



Note: The percentage change is not plotted in the above chart for groups with fewer than 30 placed applicants in any one cycle.

P.26 Placed 18 year old applicants from the UK by POLAR4 quintile: 14 days after A level results day

Applicant Status	POLAR4	2009	2010	2011	2012	2013	2014	2015	2016	2017	2018
Placed	Quintile 1	19,100	19,370	19,970	19,830	20,920	22,930	24,350	24,540	25,320	24,830
	Quintile 2	30,260	30,070	30,610	30,220	31,460	33,290	34,620	35,520	35,450	34,910
	Quintile 3	38,700	39,240	39,720	38,620	40,220	41,380	43,850	44,070	44,710	43,250
	Quintile 4	48,830	49,110	50,670	48,500	50,180	51,250	53,490	53,990	54,450	53,690
	Quintile 5	73,000	72,720	74,860	72,410	74,090	73,950	76,940	78,630	78,970	78,020

P.27 Placed 18 year old applicants from the UK by POLAR4 quintile: 14 days after A level results day

Placed 18 year old applicants: change relative to 2017 cycle totals

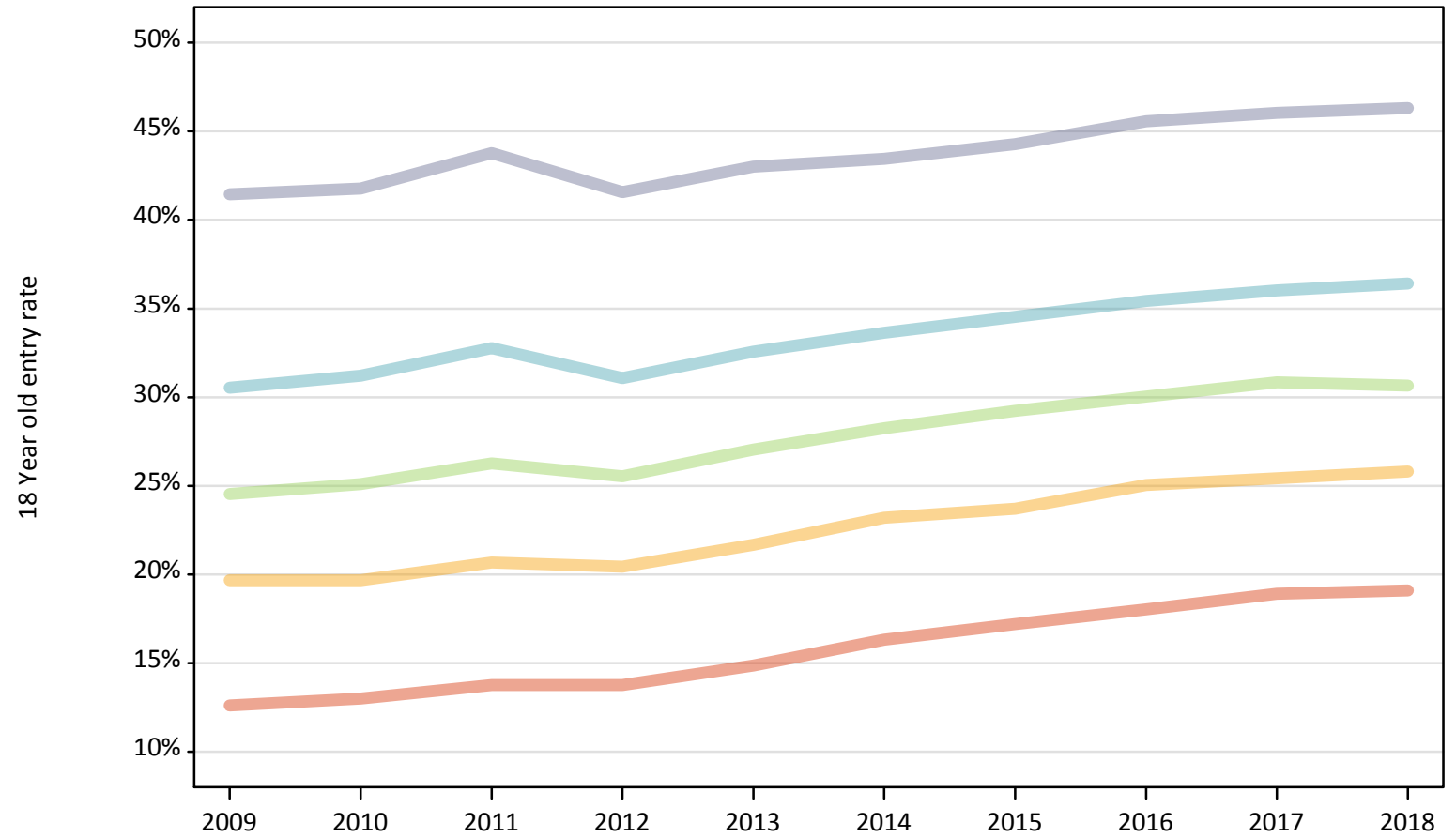
Applicant Status	POLAR4	2009	2010	2011	2012	2013	2014	2015	2016	2017	2018
Placed	Quintile 1	-25%	-23%	-21%	-22%	-17%	-9%	-4%	-3%	0%	-2%
	Quintile 2	-15%	-15%	-14%	-15%	-11%	-6%	-2%	0%	0%	-2%
	Quintile 3	-13%	-12%	-11%	-14%	-10%	-7%	-2%	-1%	0%	-3%
	Quintile 4	-10%	-10%	-7%	-11%	-8%	-6%	-2%	-1%	0%	-1%
	Quintile 5	-8%	-8%	-5%	-8%	-6%	-6%	-3%	-0%	0%	-1%

Note: The percentage change is not recorded in the above table for groups with fewer than 10 placed applicants in that cycle or in the 2017 cycle.

P.28 Placed 18 year old applicants from the UK by POLAR4 quintile: 14 days after A level results day

Placed 18 year old applicants: entry rate

- Quintile 1
- Quintile 2
- Quintile 3
- Quintile 4
- Quintile 5



P.29 Placed 18 year old applicants from the UK by POLAR4 quintile: 14 days after A level results day

Placed 18 year old applicants: entry rate

Applicant Status	POLAR4	2009	2010	2011	2012	2013	2014	2015	2016	2017	2018
Placed	Quintile 1	12.6%	13.0%	13.8%	13.8%	14.9%	16.3%	17.2%	18.0%	18.9%	19.1%
	Quintile 2	19.7%	19.7%	20.7%	20.4%	21.7%	23.2%	23.7%	25.0%	25.4%	25.8%
	Quintile 3	24.5%	25.1%	26.3%	25.5%	27.0%	28.2%	29.2%	30.0%	30.8%	30.7%
	Quintile 4	30.5%	31.2%	32.8%	31.1%	32.6%	33.6%	34.6%	35.4%	36.0%	36.4%
	Quintile 5	41.4%	41.8%	43.8%	41.6%	43.0%	43.4%	44.3%	45.6%	46.0%	46.3%

P.30 Placed 18 year old applicants from the UK by POLAR4 quintile: 14 days after A level results day

Placed 18 year old applicants: entry rate (indexed to 100 = Quintile 1)

Applicant Status	POLAR4	2009	2010	2011	2012	2013	2014	2015	2016	2017	2018
Placed	Quintile 1	100	100	100	100	100	100	100	100	100	100
	Quintile 2	156	151	150	149	146	142	138	139	134	135
	Quintile 3	195	193	191	186	182	173	170	167	163	161
	Quintile 4	242	240	238	226	219	206	201	197	190	191
	Quintile 5	329	321	318	302	289	266	258	253	243	243