

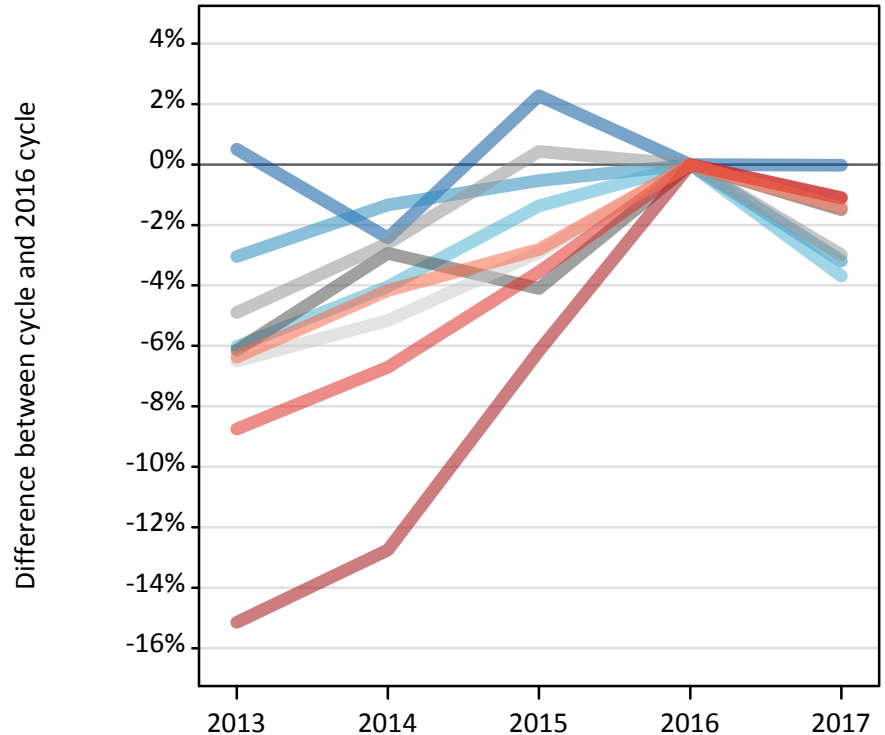
# Daily Clearing Analysis: Region

Analysis at 00:05 on Friday 18 August 2017 (1 day after A level results day)

R.1 Placed applicants by region of domicile: 1 day after A level results day

Placed applicants: change relative to 2016 cycle totals

- North East
- North West
- Yorkshire and The Humber
- East Midlands
- West Midlands
- East of England
- London
- South East
- South West



R.2 Placed applicants by region of domicile: 1 day after A level results day

Applicant Status	Domicile	2013	2014	2015	2016	2017
Placed	North East	13,740	13,340	13,980	13,670	13,670
	North West	40,960	41,680	42,020	42,250	40,900
	Yorkshire and The Humber	28,120	28,720	29,520	29,920	28,820
	East Midlands	23,750	24,560	24,260	25,300	24,920
	West Midlands	32,140	32,910	33,940	33,790	32,780
	East of England	31,810	32,260	33,030	34,020	33,550
	London	50,580	52,000	55,930	59,610	58,960
	South East	49,190	50,290	51,990	53,900	53,300
	South West	28,600	29,270	29,690	30,550	30,110
	(England total)	298,880	305,030	314,360	323,010	317,000
	Scotland	27,150	28,080	30,810	32,180	32,780
	Northern Ireland	11,800	11,770	11,790	12,540	12,110
	Wales	15,970	16,620	17,070	17,510	17,000
	UK	353,800	361,490	374,020	385,230	378,890

### R.3 Placed applicants by region of domicile: 1 day after A level results day

Placed applicants: change relative to 2016 cycle totals

Applicant Status	Domicile	2013	2014	2015	2016	2017
Placed	North East	1%	-2%	2%	0%	-0%
	North West	-3%	-1%	-1%	0%	-3%
	Yorkshire and The Humber	-6%	-4%	-1%	0%	-4%
	East Midlands	-6%	-3%	-4%	0%	-1%
	West Midlands	-5%	-3%	0%	0%	-3%
	East of England	-7%	-5%	-3%	0%	-1%
	London	-15%	-13%	-6%	0%	-1%
	South East	-9%	-7%	-4%	0%	-1%
	South West	-6%	-4%	-3%	0%	-1%
	(England total)	-7%	-6%	-3%	0%	-2%
	Scotland	-16%	-13%	-4%	0%	2%
	Northern Ireland	-6%	-6%	-6%	0%	-3%
	Wales	-9%	-5%	-3%	0%	-3%
	UK	-8%	-6%	-3%	0%	-2%

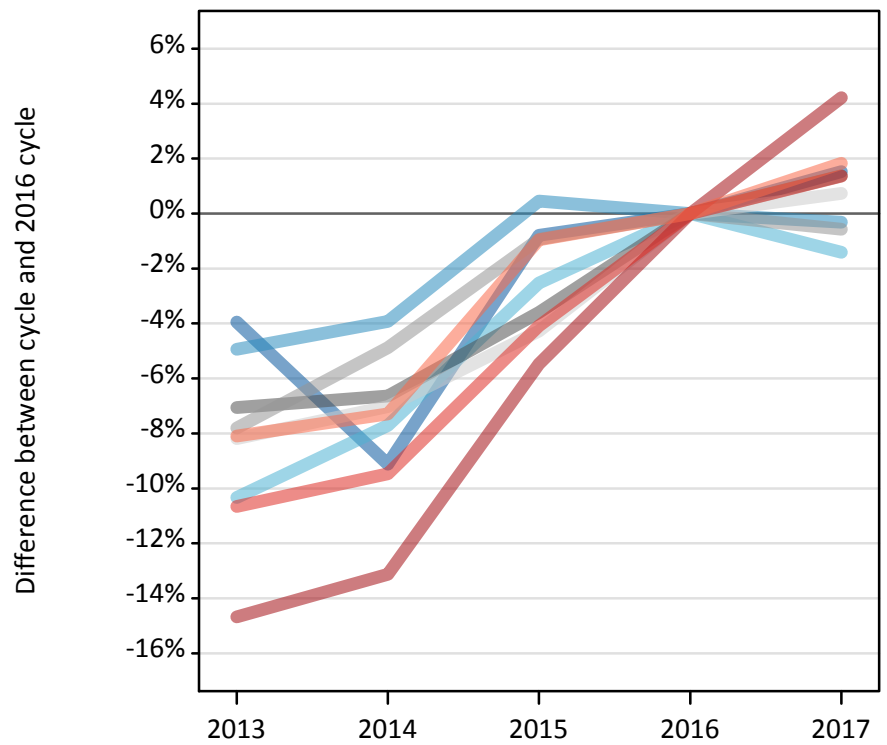
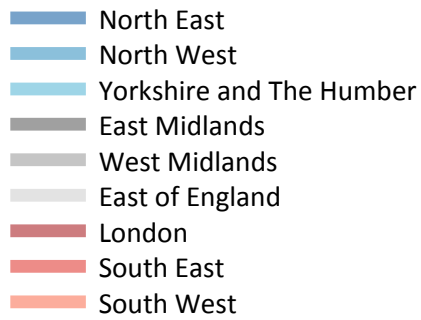
### R.4 Placed applicants by region of domicile: 1 day after A level results day

Placed applicants: absolute change relative to 2016 cycle totals

Applicant Status	Domicile	2013	2014	2015	2016	2017
Placed	North East	70	-330	310	0	0
	North West	-1,290	-570	-230	0	-1,350
	Yorkshire and The Humber	-1,800	-1,210	-410	0	-1,100
	East Midlands	-1,550	-740	-1,040	0	-380
	West Midlands	-1,650	-880	150	0	-1,010
	East of England	-2,210	-1,760	-990	0	-470
	London	-9,030	-7,600	-3,670	0	-650
	South East	-4,720	-3,620	-1,910	0	-600
	South West	-1,950	-1,270	-860	0	-440
	(England total)	-24,130	-17,980	-8,650	0	-6,010
	Scotland	-5,030	-4,100	-1,370	0	600
	Northern Ireland	-730	-770	-750	0	-420
	Wales	-1,540	-890	-440	0	-510
	UK	-31,430	-23,740	-11,210	0	-6,340

### R.5 Placed 18 year old applicants by region of domicile: 1 day after A level results day

Placed 18 year old applicants: change relative to 2016 cycle totals



### R.6 Placed 18 year old applicants by region of domicile: 1 day after A level results day

Applicant Status	Domicile	2013	2014	2015	2016	2017
Placed	North East	7,290	6,900	7,530	7,590	7,710
	North West	22,870	23,120	24,170	24,060	23,980
	Yorkshire and The Humber	15,580	16,040	16,940	17,380	17,130
	East Midlands	13,450	13,510	13,950	14,470	14,670
	West Midlands	17,500	18,060	18,810	18,980	18,880
	East of England	18,960	19,210	19,770	20,660	20,810
	London	26,320	26,800	29,160	30,850	32,150
	South East	28,380	28,760	30,470	31,770	32,200
	South West	14,650	14,780	15,790	15,940	16,230
	(England total)	165,010	167,160	176,580	181,690	183,750
	Scotland	13,810	14,120	14,170	14,450	14,390
	Northern Ireland	7,310	7,080	7,140	7,350	7,270
	Wales	8,740	9,030	9,480	9,730	9,410
	UK	194,870	197,380	207,370	213,220	214,830

## R.7 Placed 18 year old applicants by region of domicile: 1 day after A level results day

Placed 18 year old applicants: change relative to 2016 cycle totals

Applicant Status	Domicile	2013	2014	2015	2016	2017
Placed	North East	-4%	-9%	-1%	0%	2%
	North West	-5%	-4%	0%	0%	-0%
	Yorkshire and The Humber	-10%	-8%	-3%	0%	-1%
	East Midlands	-7%	-7%	-4%	0%	1%
	West Midlands	-8%	-5%	-1%	0%	-1%
	East of England	-8%	-7%	-4%	0%	1%
	London	-15%	-13%	-5%	0%	4%
	South East	-11%	-9%	-4%	0%	1%
	South West	-8%	-7%	-1%	0%	2%
	(England total)	-9%	-8%	-3%	0%	1%
	Scotland	-4%	-2%	-2%	0%	-0%
	Northern Ireland	-0%	-4%	-3%	0%	-1%
	Wales	-10%	-7%	-3%	0%	-3%
	UK	-9%	-7%	-3%	0%	1%

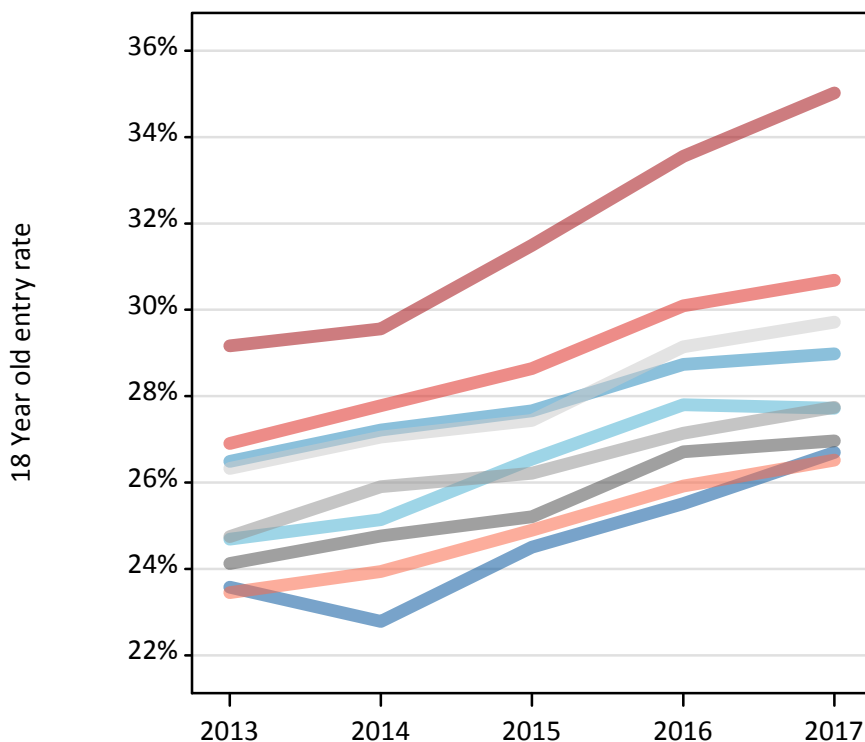
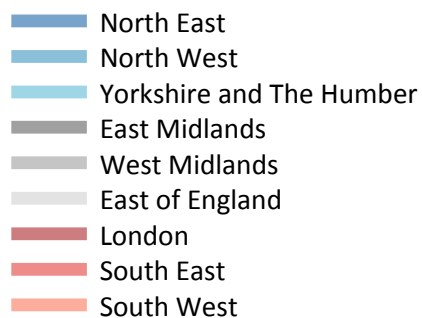
## R.8 Placed 18 year old applicants by region of domicile: 1 day after A level results day

Placed 18 year old applicants: absolute change relative to 2016 cycle totals

Applicant Status	Domicile	2013	2014	2015	2016	2017
Placed	North East	-300	-690	-60	0	120
	North West	-1,190	-940	110	0	-80
	Yorkshire and The Humber	-1,800	-1,340	-440	0	-250
	East Midlands	-1,020	-960	-520	0	200
	West Midlands	-1,480	-930	-180	0	-110
	East of England	-1,690	-1,450	-880	0	150
	London	-4,530	-4,050	-1,690	0	1,300
	South East	-3,390	-3,010	-1,300	0	430
	South West	-1,290	-1,160	-150	0	290
	(England total)	-16,680	-14,530	-5,110	0	2,060
	Scotland	-640	-330	-280	0	-60
	Northern Ireland	-30	-270	-200	0	-80
	Wales	-990	-700	-250	0	-320
	UK	-18,350	-15,830	-5,850	0	1,610

### R.9 Placed 18 year old applicants by region of domicile: 1 day after A level results day

Placed 18 year old applicants: entry rate



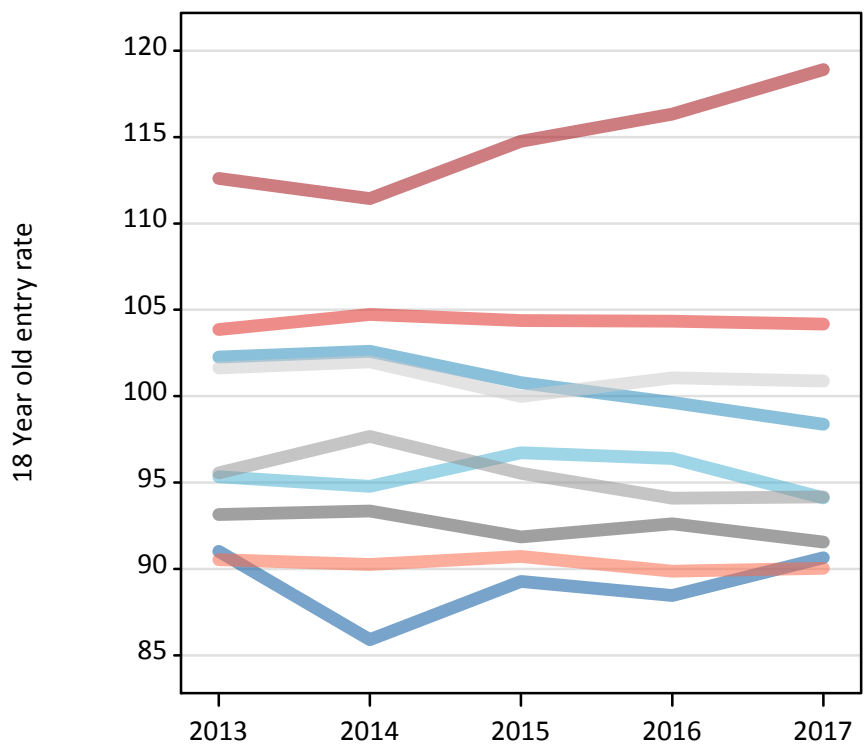
### R.10 Placed 18 year old applicants by region of domicile: 1 day after A level results day

Placed 18 year old applicants: entry rate

Applicant Status	Domicile	2013	2014	2015	2016	2017
Placed	North East	23.6%	22.8%	24.5%	25.5%	26.7%
	North West	26.5%	27.2%	27.7%	28.7%	29.0%
	Yorkshire and The Humber	24.7%	25.1%	26.5%	27.8%	27.7%
	East Midlands	24.1%	24.8%	25.2%	26.7%	27.0%
	West Midlands	24.8%	25.9%	26.2%	27.1%	27.7%
	East of England	26.3%	27.1%	27.4%	29.1%	29.7%
	London	29.2%	29.6%	31.5%	33.6%	35.0%
	South East	26.9%	27.8%	28.6%	30.1%	30.7%
	South West	23.4%	23.9%	24.9%	25.9%	26.5%
	(England total)	25.9%	26.5%	27.4%	28.8%	29.5%
	Scotland	22.4%	23.0%	23.5%	24.6%	25.1%
	Northern Ireland	29.8%	29.2%	28.8%	30.0%	30.0%
	Wales	23.1%	24.1%	25.2%	26.8%	26.5%
	UK	25.6%	26.2%	27.1%	28.4%	29.0%

### R.11 Placed 18 year old applicants by region of domicile: 1 day after A level results day

Placed 18 year old applicants: entry rates (indexed to 100 = England)



### R.12 Placed 18 year old applicants by region of domicile: 1 day after A level results day

Placed 18 year old applicants: entry rate (indexed to 100 = England)

Applicant Status	Domicile	2013	2014	2015	2016	2017
Placed	North East	91	86	89	88	91
	North West	102	103	101	100	98
	Yorkshire and The Humber	95	95	97	96	94
	East Midlands	93	93	92	93	92
	West Midlands	96	98	96	94	94
	East of England	102	102	100	101	101
	London	113	111	115	116	119
	South East	104	105	104	104	104
	South West	91	90	91	90	90
	(England total)	100	100	100	100	100