

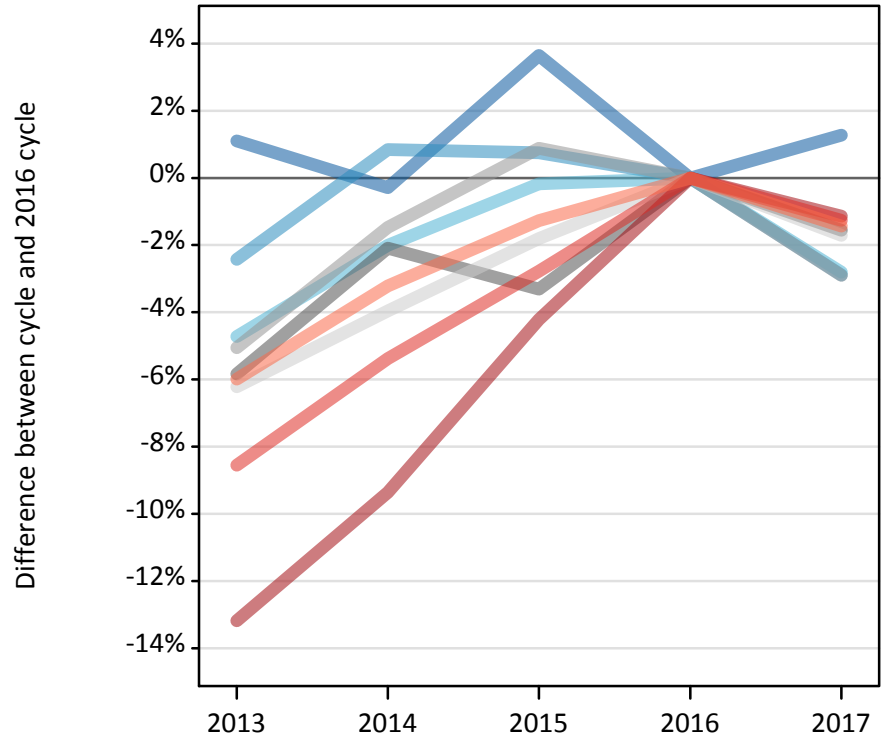
# Daily Clearing Analysis: Region

Analysis at 00:05 on Wednesday 23 August 2017 (6 days after A level results day)

## R.1 Placed applicants by region of domicile: 6 days after A level results day

Placed applicants: change relative to 2016 cycle totals

- North East
- North West
- Yorkshire and The Humber
- East Midlands
- West Midlands
- East of England
- London
- South East
- South West



## R.2 Placed applicants by region of domicile: 6 days after A level results day

Applicant Status	Domicile	2013	2014	2015	2016	2017
Placed	North East	14,870	14,670	15,250	14,710	14,900
	North West	44,680	46,170	46,130	45,790	44,460
	Yorkshire and The Humber	30,740	31,620	32,210	32,270	31,360
	East Midlands	25,880	26,910	26,580	27,490	27,060
	West Midlands	35,190	36,520	37,390	37,060	35,990
	East of England	34,580	35,420	36,210	36,880	36,250
	London	59,090	61,690	65,180	68,060	67,280
	South East	53,280	55,120	56,640	58,260	57,520
	South West	30,670	31,580	32,210	32,630	32,160
	(England total)	328,990	339,690	347,800	353,130	346,970
	Scotland	27,800	28,660	31,600	32,920	33,500
	Northern Ireland	13,210	13,200	12,950	13,730	13,350
	Wales	17,400	18,150	18,490	18,720	18,290
	UK	387,400	399,700	410,840	418,500	412,110

### R.3 Placed applicants by region of domicile: 6 days after A level results day

Placed applicants: change relative to 2016 cycle totals

Applicant Status	Domicile	2013	2014	2015	2016	2017
Placed	North East	1%	-0%	4%	0%	1%
	North West	-2%	1%	1%	0%	-3%
	Yorkshire and The Humber	-5%	-2%	-0%	0%	-3%
	East Midlands	-6%	-2%	-3%	0%	-2%
	West Midlands	-5%	-1%	1%	0%	-3%
	East of England	-6%	-4%	-2%	0%	-2%
	London	-13%	-9%	-4%	0%	-1%
	South East	-9%	-5%	-3%	0%	-1%
	South West	-6%	-3%	-1%	0%	-1%
	(England total)	-7%	-4%	-2%	0%	-2%
	Scotland	-16%	-13%	-4%	0%	2%
	Northern Ireland	-4%	-4%	-6%	0%	-3%
	Wales	-7%	-3%	-1%	0%	-2%
	UK	-7%	-4%	-2%	0%	-2%

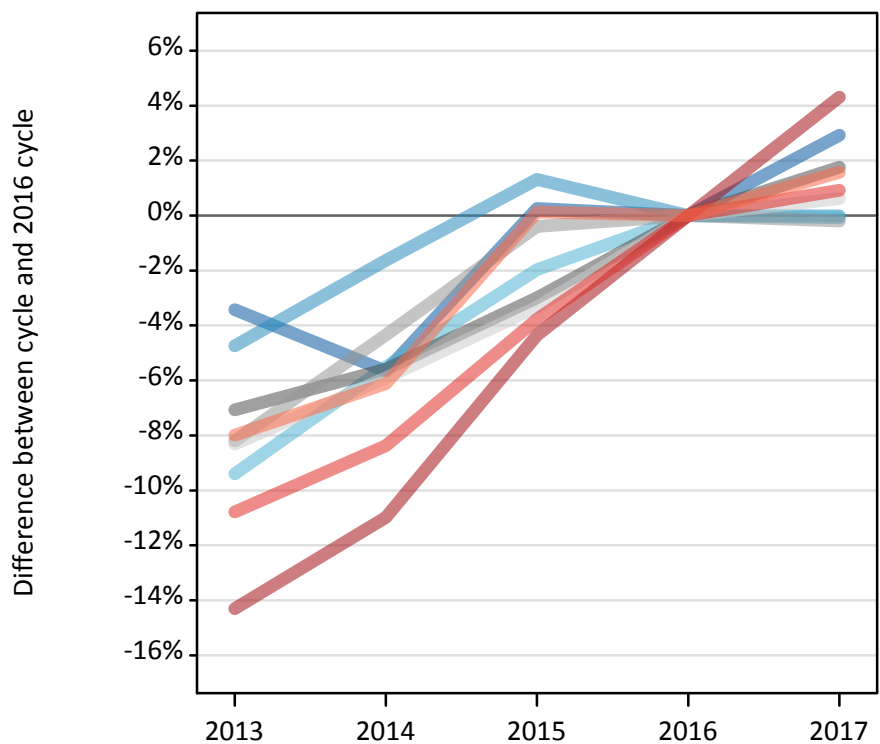
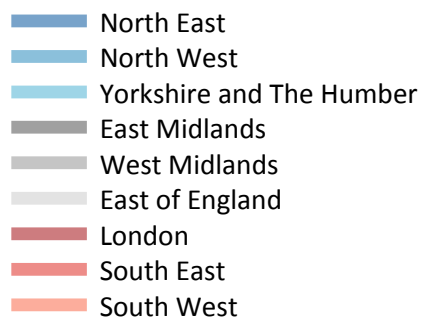
### R.4 Placed applicants by region of domicile: 6 days after A level results day

Placed applicants: absolute change relative to 2016 cycle totals

Applicant Status	Domicile	2013	2014	2015	2016	2017
Placed	North East	160	-40	540	0	190
	North West	-1,110	390	350	0	-1,320
	Yorkshire and The Humber	-1,520	-650	-60	0	-910
	East Midlands	-1,610	-580	-910	0	-430
	West Midlands	-1,870	-540	330	0	-1,080
	East of England	-2,290	-1,460	-670	0	-630
	London	-8,970	-6,370	-2,870	0	-770
	South East	-4,980	-3,130	-1,620	0	-730
	South West	-1,950	-1,050	-410	0	-470
	(England total)	-24,140	-13,430	-5,330	0	-6,150
	Scotland	-5,120	-4,260	-1,330	0	580
	Northern Ireland	-520	-540	-780	0	-390
	Wales	-1,320	-570	-230	0	-430
	UK	-31,100	-18,800	-7,670	0	-6,390

### R.5 Placed 18 year old applicants by region of domicile: 6 days after A level results day

Placed 18 year old applicants: change relative to 2016 cycle totals



### R.6 Placed 18 year old applicants by region of domicile: 6 days after A level results day

Applicant Status	Domicile	2013	2014	2015	2016	2017
Placed	North East	7,930	7,750	8,240	8,220	8,460
	North West	24,930	25,750	26,520	26,170	26,170
	Yorkshire and The Humber	17,010	17,750	18,410	18,780	18,760
	East Midlands	14,650	14,880	15,290	15,760	16,040
	West Midlands	19,140	19,940	20,770	20,850	20,810
	East of England	20,620	21,160	21,740	22,490	22,630
	London	30,440	31,620	33,970	35,520	37,050
	South East	30,860	31,690	33,280	34,590	34,910
	South West	15,720	16,030	17,100	17,080	17,350
	(England total)	181,290	186,570	195,310	199,450	202,160
	Scotland	14,040	14,260	14,380	14,620	14,590
	Northern Ireland	8,250	8,020	7,950	8,140	8,080
	Wales	9,480	9,840	10,280	10,420	10,110
	UK	213,060	218,680	227,910	232,630	234,940

## R.7 Placed 18 year old applicants by region of domicile: 6 days after A level results day

Placed 18 year old applicants: change relative to 2016 cycle totals

Applicant Status	Domicile	2013	2014	2015	2016	2017
Placed	North East	-3%	-6%	0%	0%	3%
	North West	-5%	-2%	1%	0%	-0%
	Yorkshire and The Humber	-9%	-6%	-2%	0%	-0%
	East Midlands	-7%	-6%	-3%	0%	2%
	West Midlands	-8%	-4%	-0%	0%	-0%
	East of England	-8%	-6%	-3%	0%	1%
	London	-14%	-11%	-4%	0%	4%
	South East	-11%	-8%	-4%	0%	1%
	South West	-8%	-6%	0%	0%	2%
	(England total)	-9%	-6%	-2%	0%	1%
	Scotland	-4%	-2%	-2%	0%	-0%
	Northern Ireland	1%	-1%	-2%	0%	-1%
	Wales	-9%	-6%	-1%	0%	-3%
	UK	-8%	-6%	-2%	0%	1%

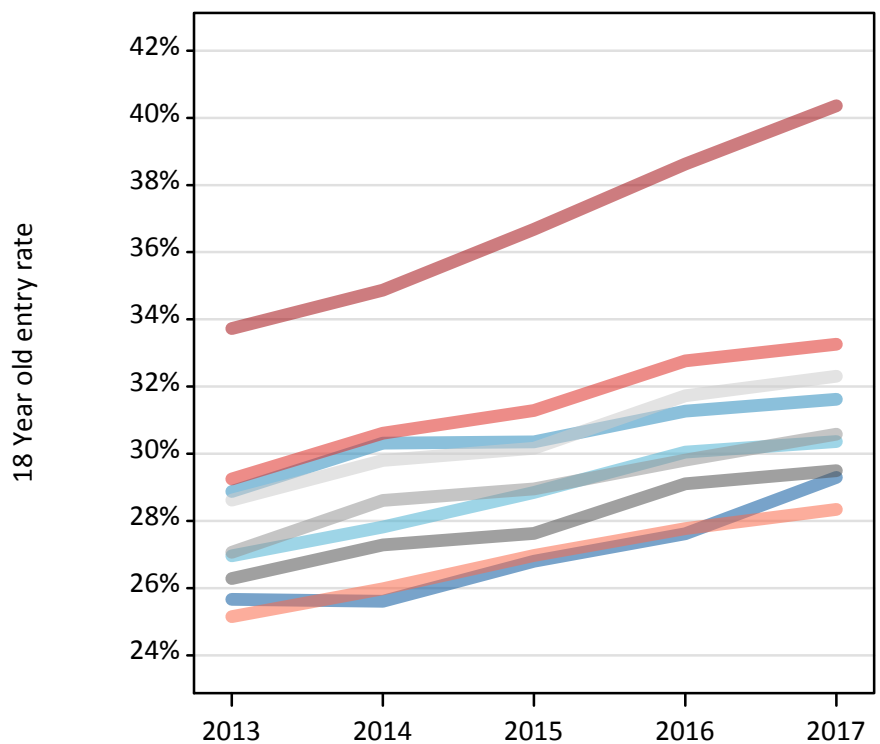
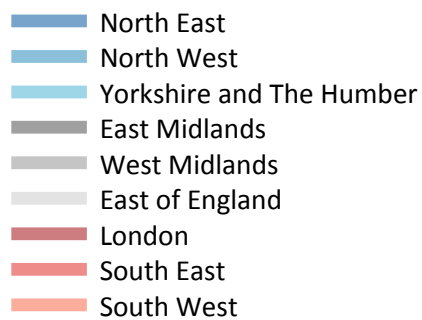
## R.8 Placed 18 year old applicants by region of domicile: 6 days after A level results day

Placed 18 year old applicants: absolute change relative to 2016 cycle totals

Applicant Status	Domicile	2013	2014	2015	2016	2017
Placed	North East	-280	-470	20	0	240
	North West	-1,240	-430	350	0	0
	Yorkshire and The Humber	-1,770	-1,040	-370	0	-20
	East Midlands	-1,110	-880	-470	0	280
	West Midlands	-1,710	-910	-80	0	-40
	East of England	-1,870	-1,330	-750	0	140
	London	-5,080	-3,900	-1,550	0	1,530
	South East	-3,730	-2,900	-1,310	0	320
	South West	-1,360	-1,050	20	0	270
	(England total)	-18,160	-12,880	-4,140	0	2,710
	Scotland	-580	-360	-240	0	-30
	Northern Ireland	110	-120	-190	0	-70
	Wales	-950	-590	-150	0	-320
	UK	-19,570	-13,950	-4,720	0	2,310

### R.9 Placed 18 year old applicants by region of domicile: 6 days after A level results day

Placed 18 year old applicants: entry rate



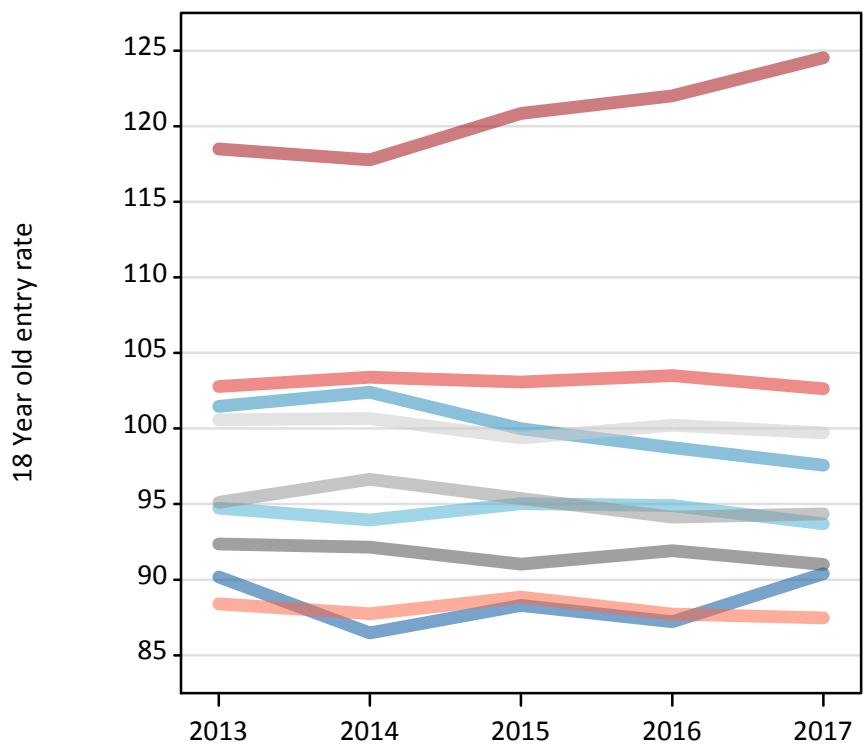
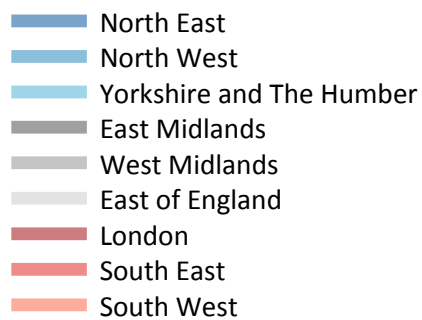
### R.10 Placed 18 year old applicants by region of domicile: 6 days after A level results day

Placed 18 year old applicants: entry rate

Applicant Status	Domicile	2013	2014	2015	2016	2017
Placed	North East	25.7%	25.6%	26.8%	27.6%	29.3%
	North West	28.9%	30.3%	30.4%	31.3%	31.6%
	Yorkshire and The Humber	27.0%	27.8%	28.8%	30.0%	30.4%
	East Midlands	26.3%	27.3%	27.6%	29.1%	29.5%
	West Midlands	27.1%	28.6%	28.9%	29.8%	30.6%
	East of England	28.6%	29.8%	30.2%	31.7%	32.3%
	London	33.7%	34.9%	36.7%	38.6%	40.4%
	South East	29.2%	30.6%	31.3%	32.8%	33.3%
	South West	25.2%	26.0%	27.0%	27.8%	28.3%
	(England total)	28.5%	29.6%	30.4%	31.7%	32.4%
	Scotland	22.8%	23.3%	23.9%	24.8%	25.4%
	Northern Ireland	33.6%	33.1%	32.0%	33.3%	33.4%
	Wales	25.1%	26.2%	27.3%	28.7%	28.5%
	UK	28.0%	29.0%	29.7%	31.0%	31.7%

### R.11 Placed 18 year old applicants by region of domicile: 6 days after A level results day

Placed 18 year old applicants: entry rates (indexed to 100 = England)



### R.12 Placed 18 year old applicants by region of domicile: 6 days after A level results day

Placed 18 year old applicants: entry rate (indexed to 100 = England)

Applicant Status	Domicile	2013	2014	2015	2016	2017
Placed	North East	90	86	88	87	90
	North West	101	102	100	99	98
	Yorkshire and The Humber	95	94	95	95	94
	East Midlands	92	92	91	92	91
	West Midlands	95	97	95	94	94
	East of England	101	101	99	100	100
	London	119	118	121	122	125
	South East	103	103	103	103	103
	South West	88	88	89	88	87
	(England total)	100	100	100	100	100