

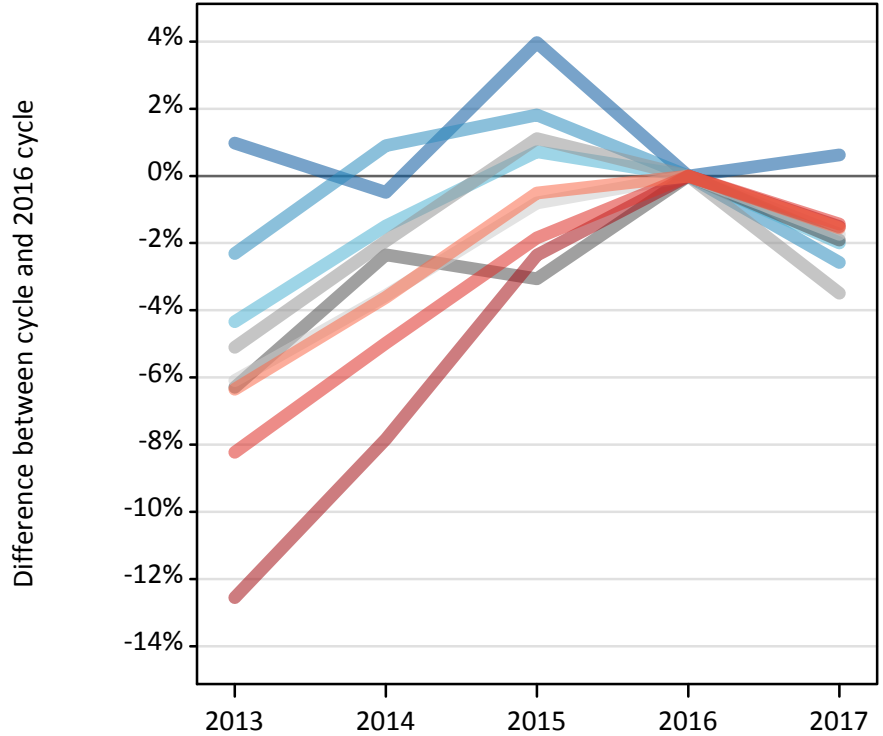
Daily Clearing Analysis: Region

Analysis at 00:05 on Thursday 31 August 2017 (14 days after A level results day)

R.1 Placed applicants by region of domicile: 14 days after A level results day

Placed applicants: change relative to 2016 cycle totals

- North East
- North West
- Yorkshire and The Humber
- East Midlands
- West Midlands
- East of England
- London
- South East
- South West



R.2 Placed applicants by region of domicile: 14 days after A level results day

Applicant Status	Domicile	2013	2014	2015	2016	2017
Placed	North East	15,450	15,230	15,910	15,300	15,400
	North West	46,520	48,050	48,480	47,620	46,390
	Yorkshire and The Humber	31,920	32,870	33,610	33,370	32,700
	East Midlands	26,670	27,800	27,590	28,470	27,920
	West Midlands	36,660	37,880	39,060	38,630	37,280
	East of England	35,660	36,620	37,660	37,970	37,310
	London	62,730	66,120	70,050	71,740	70,660
	South East	54,980	56,930	58,810	59,910	59,050
	South West	31,630	32,560	33,610	33,780	33,250
	(England total)	342,220	354,040	364,780	366,780	359,970
	Scotland	28,640	29,340	32,150	33,450	34,170
	Northern Ireland	14,210	14,200	13,870	14,650	14,200
	Wales	17,970	18,750	19,160	19,320	18,830
	UK	403,040	416,330	429,970	434,200	427,160

R.3 Placed applicants by region of domicile: 14 days after A level results day

Placed applicants: change relative to 2016 cycle totals

Applicant Status	Domicile	2013	2014	2015	2016	2017
Placed	North East	1%	-0%	4%	0%	1%
	North West	-2%	1%	2%	0%	-3%
	Yorkshire and The Humber	-4%	-1%	1%	0%	-2%
	East Midlands	-6%	-2%	-3%	0%	-2%
	West Midlands	-5%	-2%	1%	0%	-3%
	East of England	-6%	-4%	-1%	0%	-2%
	London	-13%	-8%	-2%	0%	-2%
	South East	-8%	-5%	-2%	0%	-1%
	South West	-6%	-4%	-1%	0%	-2%
	(England total)	-7%	-3%	-1%	0%	-2%
	Scotland	-14%	-12%	-4%	0%	2%
	Northern Ireland	-3%	-3%	-5%	0%	-3%
	Wales	-7%	-3%	-1%	0%	-3%
	UK	-7%	-4%	-1%	0%	-2%

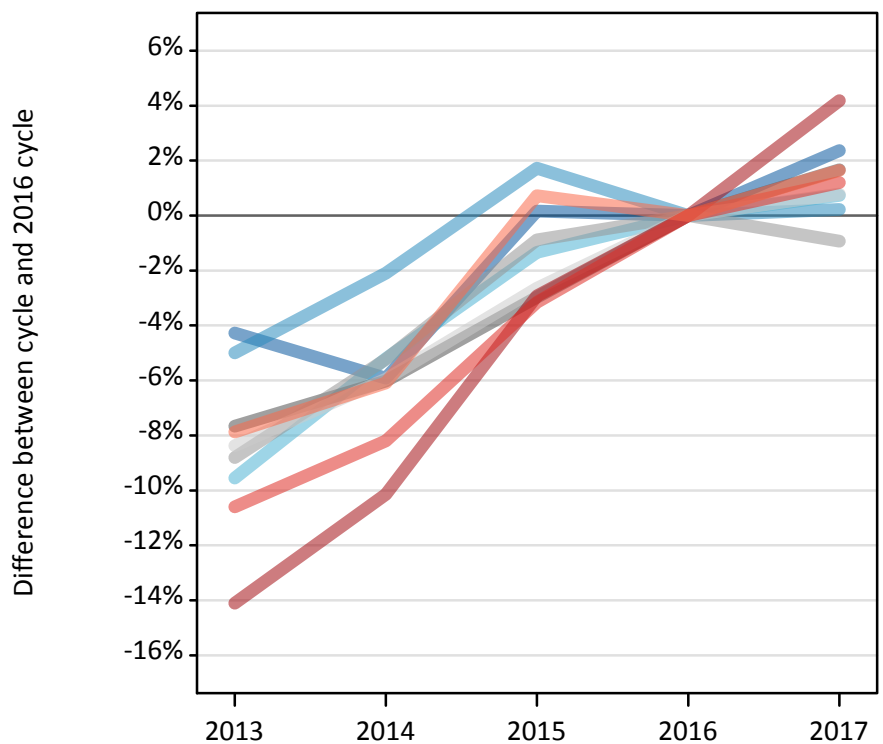
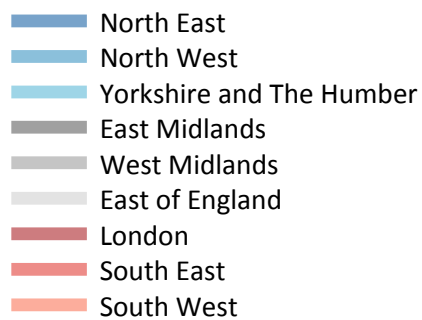
R.4 Placed applicants by region of domicile: 14 days after A level results day

Placed applicants: absolute change relative to 2016 cycle totals

Applicant Status	Domicile	2013	2014	2015	2016	2017
Placed	North East	150	-80	610	0	100
	North West	-1,100	430	870	0	-1,230
	Yorkshire and The Humber	-1,450	-500	240	0	-670
	East Midlands	-1,790	-670	-870	0	-540
	West Midlands	-1,970	-750	430	0	-1,350
	East of England	-2,310	-1,350	-310	0	-660
	London	-9,010	-5,620	-1,690	0	-1,090
	South East	-4,930	-2,990	-1,100	0	-860
	South West	-2,140	-1,220	-170	0	-520
	(England total)	-24,560	-12,740	-2,000	0	-6,820
	Scotland	-4,810	-4,100	-1,300	0	720
	Northern Ireland	-440	-460	-780	0	-450
	Wales	-1,360	-580	-160	0	-500
	UK	-31,170	-17,870	-4,240	0	-7,040

R.5 Placed 18 year old applicants by region of domicile: 14 days after A level results day

Placed 18 year old applicants: change relative to 2016 cycle totals



R.6 Placed 18 year old applicants by region of domicile: 14 days after A level results day

Applicant Status	Domicile	2013	2014	2015	2016	2017
Placed	North East	8,090	7,960	8,470	8,460	8,660
	North West	25,450	26,220	27,250	26,780	26,840
	Yorkshire and The Humber	17,270	18,100	18,840	19,100	19,240
	East Midlands	14,820	15,080	15,570	16,050	16,320
	West Midlands	19,530	20,300	21,230	21,420	21,220
	East of England	20,910	21,460	22,220	22,820	23,000
	London	31,340	32,780	35,420	36,490	38,010
	South East	31,300	32,140	33,910	35,010	35,430
	South West	15,950	16,260	17,440	17,310	17,600
	(England total)	184,650	190,300	200,330	203,430	206,300
	Scotland	14,150	14,320	14,420	14,640	14,640
	Northern Ireland	8,760	8,530	8,410	8,560	8,480
	Wales	9,660	10,040	10,500	10,600	10,270
	UK	217,210	223,190	233,660	237,230	239,700

R.7 Placed 18 year old applicants by region of domicile: 14 days after A level results day

Placed 18 year old applicants: change relative to 2016 cycle totals

Applicant Status	Domicile	2013	2014	2015	2016	2017
Placed	North East	-4%	-6%	0%	0%	2%
	North West	-5%	-2%	2%	0%	0%
	Yorkshire and The Humber	-10%	-5%	-1%	0%	1%
	East Midlands	-8%	-6%	-3%	0%	2%
	West Midlands	-9%	-5%	-1%	0%	-1%
	East of England	-8%	-6%	-3%	0%	1%
	London	-14%	-10%	-3%	0%	4%
	South East	-11%	-8%	-3%	0%	1%
	South West	-8%	-6%	1%	0%	2%
	(England total)	-9%	-6%	-2%	0%	1%
	Scotland	-3%	-2%	-2%	0%	0%
	Northern Ireland	2%	-0%	-2%	0%	-1%
	Wales	-9%	-5%	-1%	0%	-3%
	UK	-8%	-6%	-2%	0%	1%

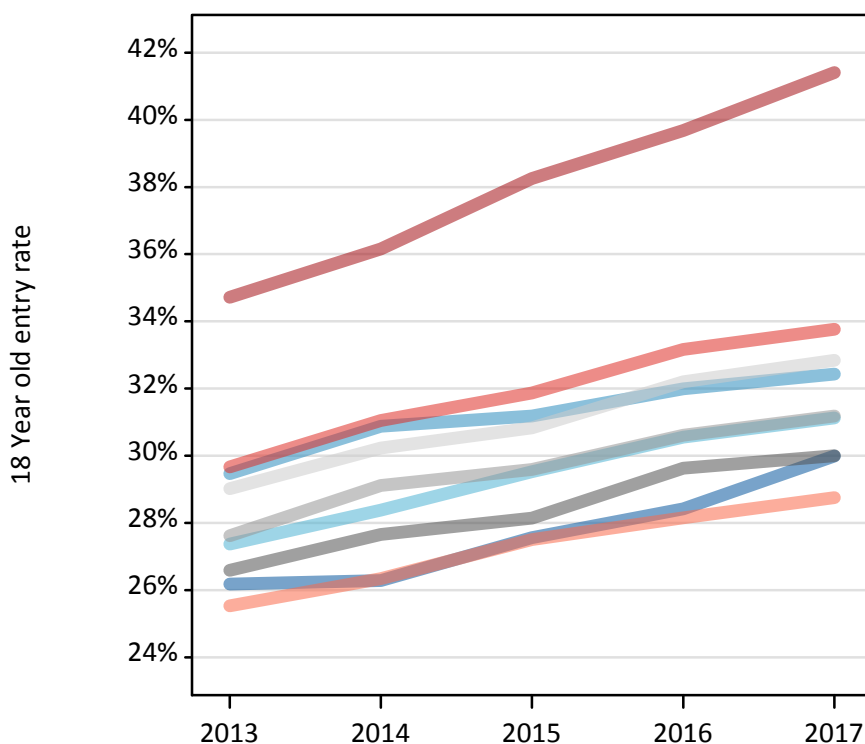
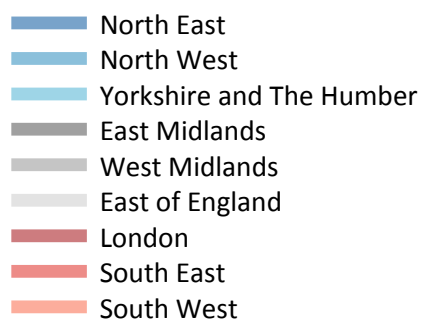
R.8 Placed 18 year old applicants by region of domicile: 14 days after A level results day

Placed 18 year old applicants: absolute change relative to 2016 cycle totals

Applicant Status	Domicile	2013	2014	2015	2016	2017
Placed	North East	-360	-500	10	0	200
	North West	-1,340	-560	460	0	60
	Yorkshire and The Humber	-1,820	-990	-260	0	140
	East Midlands	-1,230	-970	-480	0	270
	West Midlands	-1,890	-1,120	-190	0	-200
	East of England	-1,910	-1,360	-600	0	180
	London	-5,150	-3,700	-1,070	0	1,530
	South East	-3,710	-2,870	-1,100	0	420
	South West	-1,360	-1,050	130	0	280
	(England total)	-18,780	-13,120	-3,090	0	2,880
	Scotland	-490	-330	-220	0	0
	Northern Ireland	190	-30	-150	0	-80
	Wales	-950	-560	-100	0	-340
	UK	-20,020	-14,040	-3,570	0	2,460

R.9 Placed 18 year old applicants by region of domicile: 14 days after A level results day

Placed 18 year old applicants: entry rate



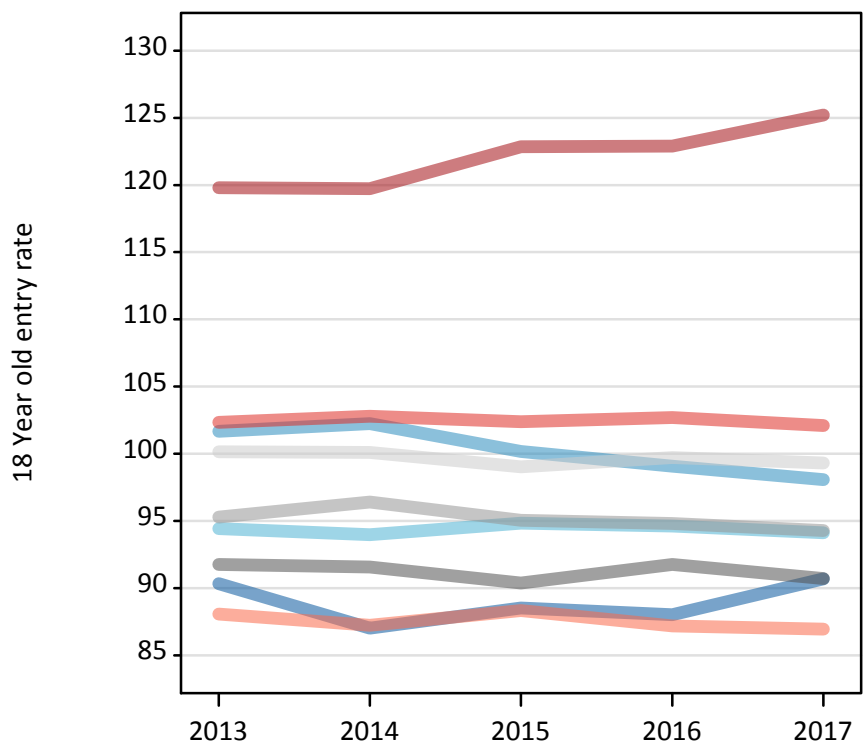
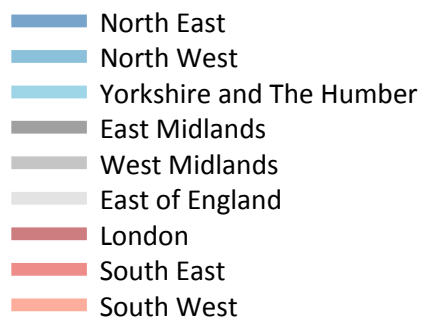
R.10 Placed 18 year old applicants by region of domicile: 14 days after A level results day

Placed 18 year old applicants: entry rate

Applicant Status	Domicile	2013	2014	2015	2016	2017
Placed	North East	26.2%	26.3%	27.6%	28.4%	30.0%
	North West	29.5%	30.9%	31.2%	32.0%	32.4%
	Yorkshire and The Humber	27.4%	28.4%	29.5%	30.6%	31.1%
	East Midlands	26.6%	27.7%	28.1%	29.6%	30.0%
	West Midlands	27.6%	29.1%	29.6%	30.6%	31.2%
	East of England	29.0%	30.2%	30.8%	32.2%	32.8%
	London	34.7%	36.2%	38.2%	39.7%	41.4%
	South East	29.7%	31.0%	31.9%	33.2%	33.8%
	South West	25.5%	26.3%	27.5%	28.2%	28.8%
	(England total)	29.0%	30.2%	31.1%	32.3%	33.1%
	Scotland	23.0%	23.4%	24.0%	24.9%	25.5%
	Northern Ireland	35.7%	35.2%	33.9%	35.0%	35.0%
	Wales	25.5%	26.8%	27.9%	29.2%	28.9%
	UK	28.5%	29.6%	30.5%	31.6%	32.4%

R.11 Placed 18 year old applicants by region of domicile: 14 days after A level results day

Placed 18 year old applicants: entry rates (indexed to 100 = England)



R.12 Placed 18 year old applicants by region of domicile: 14 days after A level results day

Placed 18 year old applicants: entry rate (indexed to 100 = England)

Applicant Status	Domicile	2013	2014	2015	2016	2017
Placed	North East	90	87	89	88	91
	North West	102	102	100	99	98
	Yorkshire and The Humber	94	94	95	95	94
	East Midlands	92	92	90	92	91
	West Midlands	95	96	95	95	94
	East of England	100	100	99	100	99
	London	120	120	123	123	125
	South East	102	103	102	103	102
	South West	88	87	88	87	87
	(England total)	100	100	100	100	100