

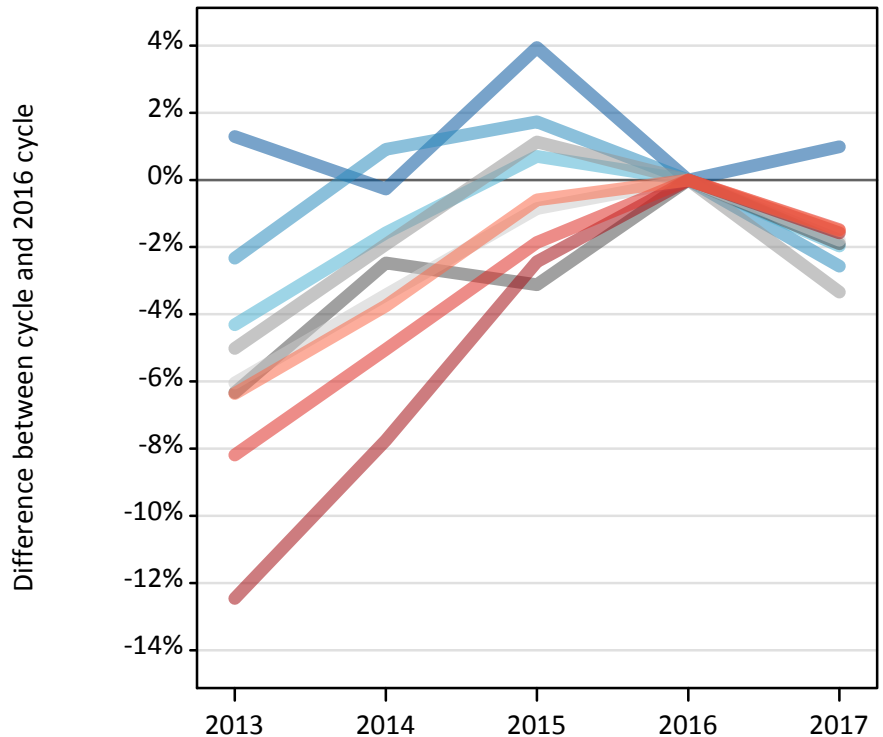
# Daily Clearing Analysis: Region

Analysis at 00:05 on Friday 1 September 2017 (15 days after A level results day)

R.1 Placed applicants by region of domicile: 15 days after A level results day

Placed applicants: change relative to 2016 cycle totals

- North East
- North West
- Yorkshire and The Humber
- East Midlands
- West Midlands
- East of England
- London
- South East
- South West



R.2 Placed applicants by region of domicile: 15 days after A level results day

Applicant Status	Domicile	2013	2014	2015	2016	2017
Placed	North East	15,560	15,320	15,960	15,360	15,510
	North West	46,730	48,290	48,680	47,850	46,620
	Yorkshire and The Humber	32,090	33,010	33,770	33,540	32,880
	East Midlands	26,790	27,890	27,710	28,600	28,050
	West Midlands	36,830	38,030	39,220	38,780	37,480
	East of England	35,810	36,810	37,790	38,120	37,430
	London	63,240	66,640	70,480	72,240	71,100
	South East	55,200	57,090	59,000	60,120	59,230
	South West	31,760	32,650	33,720	33,920	33,410
	(England total)	344,000	355,720	366,320	368,510	361,710
	Scotland	28,740	29,470	32,180	33,520	34,270
	Northern Ireland	14,270	14,270	13,940	14,720	14,250
	Wales	18,040	18,820	19,210	19,370	18,910
	UK	405,050	418,280	431,640	436,130	429,140

### R.3 Placed applicants by region of domicile: 15 days after A level results day

Placed applicants: change relative to 2016 cycle totals

Applicant Status	Domicile	2013	2014	2015	2016	2017
Placed	North East	1%	-0%	4%	0%	1%
	North West	-2%	1%	2%	0%	-3%
	Yorkshire and The Humber	-4%	-2%	1%	0%	-2%
	East Midlands	-6%	-2%	-3%	0%	-2%
	West Midlands	-5%	-2%	1%	0%	-3%
	East of England	-6%	-3%	-1%	0%	-2%
	London	-12%	-8%	-2%	0%	-2%
	South East	-8%	-5%	-2%	0%	-1%
	South West	-6%	-4%	-1%	0%	-2%
	(England total)	-7%	-3%	-1%	0%	-2%
	Scotland	-14%	-12%	-4%	0%	2%
	Northern Ireland	-3%	-3%	-5%	0%	-3%
	Wales	-7%	-3%	-1%	0%	-2%
	UK	-7%	-4%	-1%	0%	-2%

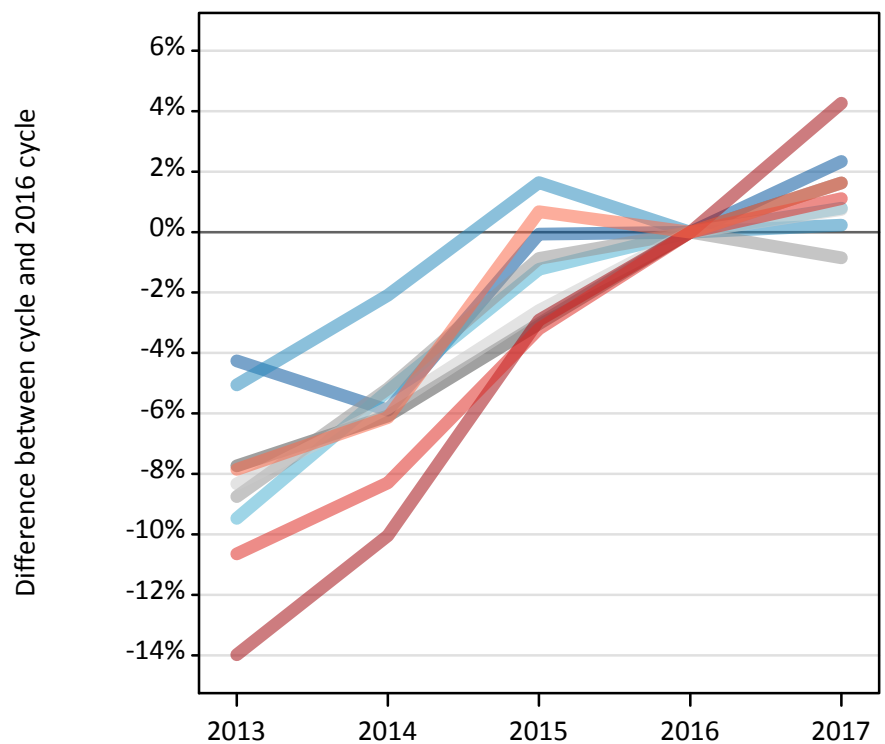
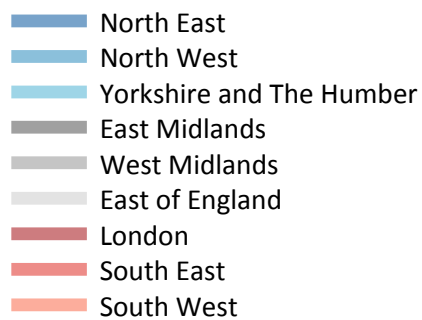
### R.4 Placed applicants by region of domicile: 15 days after A level results day

Placed applicants: absolute change relative to 2016 cycle totals

Applicant Status	Domicile	2013	2014	2015	2016	2017
Placed	North East	200	-40	610	0	150
	North West	-1,120	440	830	0	-1,230
	Yorkshire and The Humber	-1,450	-530	230	0	-660
	East Midlands	-1,810	-710	-890	0	-540
	West Midlands	-1,950	-740	440	0	-1,290
	East of England	-2,310	-1,310	-320	0	-690
	London	-9,000	-5,600	-1,760	0	-1,140
	South East	-4,930	-3,030	-1,120	0	-890
	South West	-2,160	-1,270	-200	0	-510
	(England total)	-24,510	-12,790	-2,180	0	-6,800
	Scotland	-4,790	-4,060	-1,350	0	750
	Northern Ireland	-450	-450	-780	0	-480
	Wales	-1,330	-550	-170	0	-460
	UK	-31,080	-17,850	-4,480	0	-6,990

### R.5 Placed 18 year old applicants by region of domicile: 15 days after A level results day

Placed 18 year old applicants: change relative to 2016 cycle totals



### R.6 Placed 18 year old applicants by region of domicile: 15 days after A level results day

Applicant Status	Domicile	2013	2014	2015	2016	2017
Placed	North East	8,120	7,980	8,470	8,480	8,680
	North West	25,480	26,270	27,270	26,840	26,900
	Yorkshire and The Humber	17,310	18,120	18,890	19,120	19,270
	East Midlands	14,840	15,100	15,590	16,080	16,340
	West Midlands	19,560	20,320	21,250	21,430	21,250
	East of England	20,940	21,510	22,250	22,840	23,010
	London	31,430	32,870	35,470	36,540	38,090
	South East	31,330	32,150	33,940	35,060	35,450
	South West	15,980	16,280	17,460	17,340	17,620
	(England total)	184,970	190,600	200,590	203,730	206,610
	Scotland	14,170	14,330	14,420	14,640	14,660
	Northern Ireland	8,780	8,560	8,450	8,590	8,480
	Wales	9,680	10,070	10,510	10,620	10,290
	UK	217,590	223,560	233,960	237,570	240,030

## R.7 Placed 18 year old applicants by region of domicile: 15 days after A level results day

Placed 18 year old applicants: change relative to 2016 cycle totals

Applicant Status	Domicile	2013	2014	2015	2016	2017
Placed	North East	-4%	-6%	-0%	0%	2%
	North West	-5%	-2%	2%	0%	0%
	Yorkshire and The Humber	-9%	-5%	-1%	0%	1%
	East Midlands	-8%	-6%	-3%	0%	2%
	West Midlands	-9%	-5%	-1%	0%	-1%
	East of England	-8%	-6%	-3%	0%	1%
	London	-14%	-10%	-3%	0%	4%
	South East	-11%	-8%	-3%	0%	1%
	South West	-8%	-6%	1%	0%	2%
	(England total)	-9%	-6%	-2%	0%	1%
	Scotland	-3%	-2%	-1%	0%	0%
	Northern Ireland	2%	-0%	-2%	0%	-1%
	Wales	-9%	-5%	-1%	0%	-3%
	UK	-8%	-6%	-2%	0%	1%

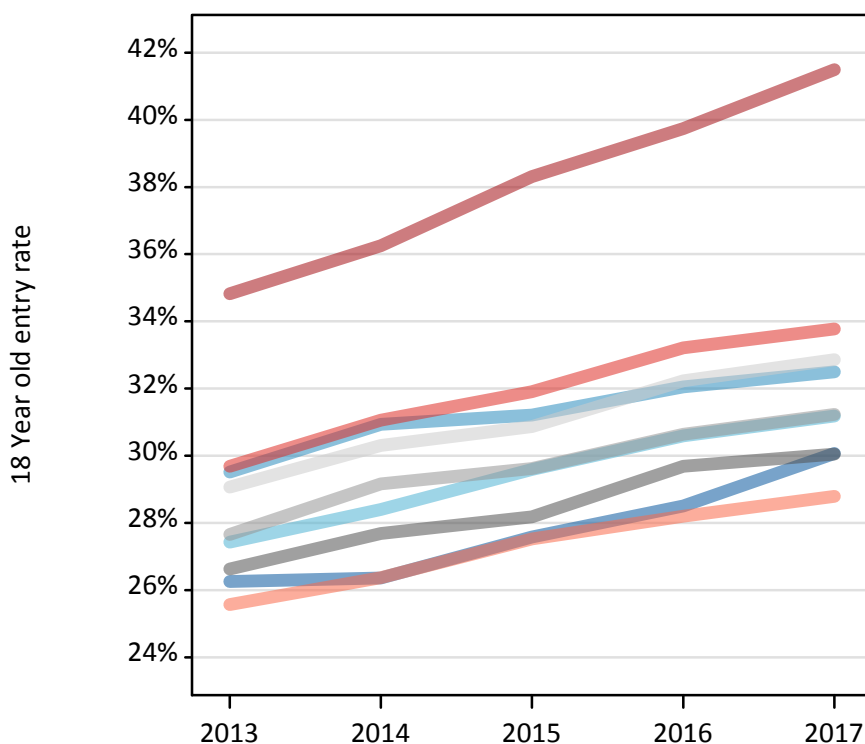
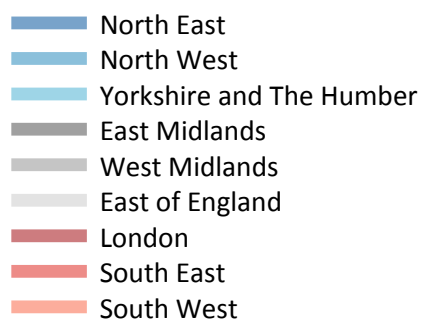
## R.8 Placed 18 year old applicants by region of domicile: 15 days after A level results day

Placed 18 year old applicants: absolute change relative to 2016 cycle totals

Applicant Status	Domicile	2013	2014	2015	2016	2017
Placed	North East	-360	-500	-10	0	200
	North West	-1,360	-560	440	0	60
	Yorkshire and The Humber	-1,810	-1,010	-240	0	150
	East Midlands	-1,240	-980	-490	0	260
	West Midlands	-1,880	-1,110	-190	0	-180
	East of England	-1,900	-1,330	-590	0	170
	London	-5,110	-3,670	-1,060	0	1,560
	South East	-3,730	-2,910	-1,120	0	390
	South West	-1,360	-1,060	120	0	280
	(England total)	-18,760	-13,130	-3,140	0	2,890
	Scotland	-470	-310	-220	0	20
	Northern Ireland	190	-30	-140	0	-110
	Wales	-940	-550	-100	0	-330
	UK	-19,970	-14,000	-3,600	0	2,470

### R.9 Placed 18 year old applicants by region of domicile: 15 days after A level results day

Placed 18 year old applicants: entry rate



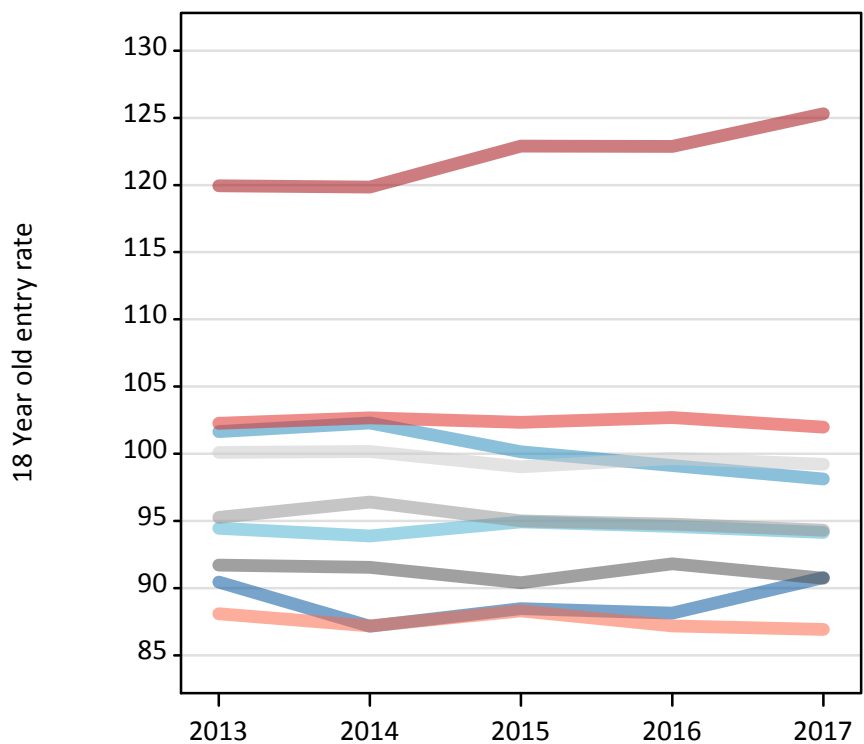
### R.10 Placed 18 year old applicants by region of domicile: 15 days after A level results day

Placed 18 year old applicants: entry rate

Applicant Status	Domicile	2013	2014	2015	2016	2017
Placed	North East	26.3%	26.4%	27.6%	28.5%	30.1%
	North West	29.5%	30.9%	31.2%	32.1%	32.5%
	Yorkshire and The Humber	27.4%	28.4%	29.6%	30.6%	31.2%
	East Midlands	26.6%	27.7%	28.2%	29.7%	30.0%
	West Midlands	27.7%	29.2%	29.6%	30.6%	31.2%
	East of England	29.1%	30.3%	30.9%	32.2%	32.9%
	London	34.8%	36.3%	38.3%	39.7%	41.5%
	South East	29.7%	31.1%	31.9%	33.2%	33.8%
	South West	25.6%	26.4%	27.5%	28.2%	28.8%
	(England total)	29.0%	30.2%	31.2%	32.3%	33.1%
	Scotland	23.0%	23.4%	24.0%	24.9%	25.6%
	Northern Ireland	35.8%	35.3%	34.0%	35.1%	35.0%
	Wales	25.6%	26.9%	27.9%	29.2%	29.0%
	UK	28.6%	29.7%	30.5%	31.7%	32.4%

### R.11 Placed 18 year old applicants by region of domicile: 15 days after A level results day

Placed 18 year old applicants: entry rates (indexed to 100 = England)



### R.12 Placed 18 year old applicants by region of domicile: 15 days after A level results day

Placed 18 year old applicants: entry rate (indexed to 100 = England)

Applicant Status	Domicile	2013	2014	2015	2016	2017
Placed	North East	90	87	88	88	91
	North West	102	102	100	99	98
	Yorkshire and The Humber	94	94	95	95	94
	East Midlands	92	92	90	92	91
	West Midlands	95	96	95	95	94
	East of England	100	100	99	100	99
	London	120	120	123	123	125
	South East	102	103	102	103	102
	South West	88	87	88	87	87
	(England total)	100	100	100	100	100