

Daily Clearing Analysis: Region

Analysis at 00:05 on Friday 17 August 2018 (1 day after A level results day)

R.1 Placed applicants by region of domicile: 1 day after A level results day

Placed applicants: change relative to 2017 cycle totals

- North East
- North West
- Yorkshire and The Humber
- East Midlands
- West Midlands
- East of England
- London
- South East
- South West



Note: The percentage change is not plotted in the above chart for groups with fewer than 30 placed applicants in any one cycle.

R.2 Placed applicants by region of domicile: 1 day after A level results day

Applicant Status	Domicile	2009	2010	2011	2012	2013	2014	2015	2016	2017	2018
Placed	North East	12,680	12,900	13,630	12,200	13,740	13,340	13,980	13,670	13,670	13,150
	North West	40,560	40,940	41,840	37,820	40,960	41,680	42,020	42,250	40,900	39,160
	Yorkshire and The Humber	26,820	26,930	28,110	25,640	28,120	28,720	29,520	29,920	28,820	27,670
	East Midlands	22,790	22,810	23,510	21,520	23,750	24,560	24,260	25,300	24,920	24,120
	West Midlands	29,600	30,150	30,470	28,880	32,140	32,910	33,940	33,790	32,780	31,430
	East of England	30,360	30,740	31,970	29,060	31,810	32,260	33,030	34,020	33,550	32,350
	London	45,890	48,080	49,180	45,520	50,580	52,000	55,930	59,610	58,960	58,780
	South East	47,000	50,170	50,310	45,590	49,190	50,290	51,990	53,900	53,300	52,630
	South West	27,520	28,690	29,020	25,400	28,600	29,270	29,690	30,550	30,110	29,520
	(England total)	283,210	291,410	298,040	271,620	298,880	305,030	314,360	323,010	317,000	308,820
	Scotland	25,230	26,850	26,660	26,490	27,150	28,080	30,810	32,180	32,780	33,420
	Northern Ireland	10,700	11,150	11,450	10,290	11,800	11,770	11,790	12,540	12,110	11,560
	Wales	15,720	15,080	14,880	15,460	15,970	16,620	17,070	17,510	17,000	16,780
	UK	334,870	344,500	351,030	323,860	353,800	361,490	374,020	385,230	378,890	370,580

R.3 Placed applicants by region of domicile: 1 day after A level results day

Placed applicants: change relative to 2017 cycle totals

Applicant Status	Domicile	2009	2010	2011	2012	2013	2014	2015	2016	2017	2018
Placed	North East	-7%	-6%	-0%	-11%	1%	-2%	2%	0%	0%	-4%
	North West	-1%	0%	2%	-8%	0%	2%	3%	3%	0%	-4%
	Yorkshire and The Humber	-7%	-7%	-2%	-11%	-2%	-0%	2%	4%	0%	-4%
	East Midlands	-9%	-8%	-6%	-14%	-5%	-1%	-3%	2%	0%	-3%
	West Midlands	-10%	-8%	-7%	-12%	-2%	0%	4%	3%	0%	-4%
	East of England	-10%	-8%	-5%	-13%	-5%	-4%	-2%	1%	0%	-4%
	London	-22%	-18%	-17%	-23%	-14%	-12%	-5%	1%	0%	-0%
	South East	-12%	-6%	-6%	-14%	-8%	-6%	-2%	1%	0%	-1%
	South West	-9%	-5%	-4%	-16%	-5%	-3%	-1%	1%	0%	-2%
	(England total)	-11%	-8%	-6%	-14%	-6%	-4%	-1%	2%	0%	-3%
	Scotland	-23%	-18%	-19%	-19%	-17%	-14%	-6%	-2%	0%	2%
	Northern Ireland	-12%	-8%	-5%	-15%	-3%	-3%	-3%	3%	0%	-5%
	Wales	-8%	-11%	-12%	-9%	-6%	-2%	0%	3%	0%	-1%
	UK	-12%	-9%	-7%	-15%	-7%	-5%	-1%	2%	0%	-2%

Note: The percentage change is not recorded in the above table for groups with fewer than 10 placed applicants in that cycle or in the 2017 cycle.

R.4 Placed applicants by region of domicile: 1 day after A level results day

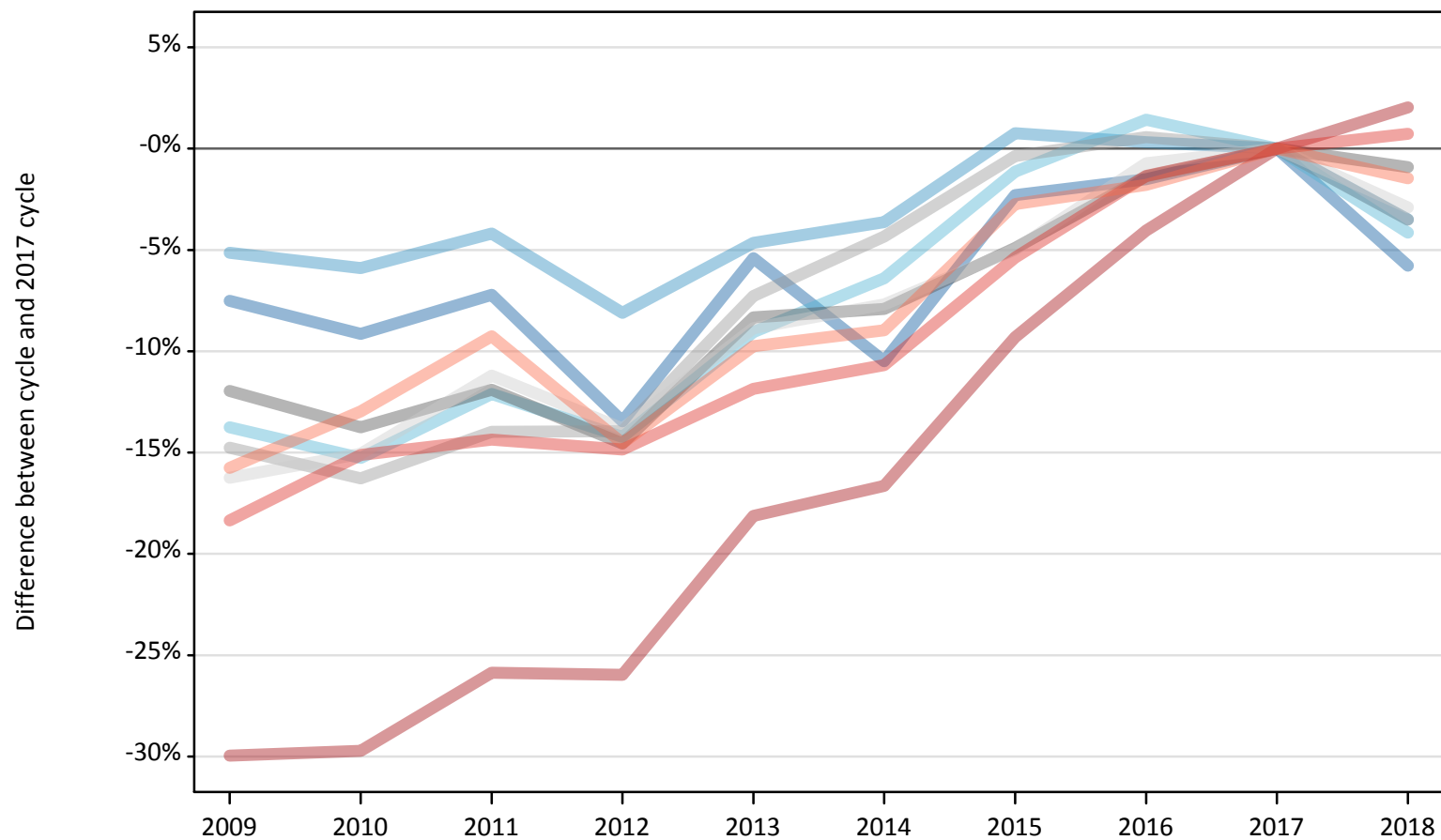
Placed applicants: absolute change relative to 2017 cycle totals

Applicant Status	Domicile	2009	2010	2011	2012	2013	2014	2015	2016	2017	2018
Placed	North East	-990	-760	-40	-1,460	70	-330	310	0	0	-510
	North West	-340	40	940	-3,090	60	780	1,120	1,350	0	-1,740
	Yorkshire and The Humber	-2,000	-1,890	-710	-3,180	-700	-110	700	1,100	0	-1,150
	East Midlands	-2,130	-2,110	-1,420	-3,400	-1,180	-360	-660	380	0	-800
	West Midlands	-3,180	-2,630	-2,320	-3,910	-650	130	1,160	1,010	0	-1,360
	East of England	-3,190	-2,810	-1,580	-4,490	-1,740	-1,280	-520	470	0	-1,200
	London	-13,070	-10,870	-9,770	-13,430	-8,380	-6,950	-3,020	650	0	-170
	South East	-6,310	-3,130	-2,990	-7,710	-4,120	-3,010	-1,310	600	0	-670
	South West	-2,590	-1,420	-1,090	-4,710	-1,510	-840	-420	440	0	-590
	(England total)	-33,790	-25,590	-18,970	-45,380	-18,120	-11,970	-2,640	6,010	0	-8,180
	Scotland	-7,550	-5,930	-6,120	-6,290	-5,630	-4,700	-1,970	-600	0	650
	Northern Ireland	-1,410	-960	-670	-1,820	-310	-350	-330	420	0	-560
	Wales	-1,280	-1,920	-2,120	-1,540	-1,030	-380	70	510	0	-220
	UK	-44,030	-34,390	-27,870	-55,030	-25,100	-17,400	-4,870	6,340	0	-8,310

R.5 Placed 18 year old applicants by region of domicile: 1 day after A level results day

Placed 18 year old applicants: change relative to 2017 cycle totals

- North East
- North West
- Yorkshire and The Humber
- East Midlands
- West Midlands
- East of England
- London
- South East
- South West



Note: The percentage change is not plotted in the above chart for groups with fewer than 30 placed applicants in any one cycle.

R.6 Placed 18 year old applicants by region of domicile: 1 day after A level results day

Applicant Status	Domicile	2009	2010	2011	2012	2013	2014	2015	2016	2017	2018
Placed	North East	7,130	7,000	7,150	6,670	7,290	6,900	7,530	7,590	7,710	7,260
	North West	22,750	22,570	22,980	22,040	22,870	23,120	24,170	24,060	23,980	23,150
	Yorkshire and The Humber	14,780	14,520	15,060	14,700	15,580	16,040	16,940	17,380	17,130	16,420
	East Midlands	12,910	12,650	12,920	12,530	13,450	13,510	13,950	14,470	14,670	14,530
	West Midlands	16,090	15,810	16,240	16,250	17,500	18,060	18,810	18,980	18,880	18,210
	East of England	17,430	17,670	18,480	17,930	18,960	19,210	19,770	20,660	20,810	20,210
	London	22,520	22,600	23,840	23,800	26,320	26,800	29,160	30,850	32,150	32,810
	South East	26,290	27,330	27,580	27,420	28,380	28,760	30,470	31,770	32,200	32,440
	South West	13,670	14,130	14,730	13,870	14,650	14,780	15,790	15,940	16,230	16,000
	(England total)	153,570	154,270	158,960	155,210	165,010	167,160	176,580	181,690	183,750	181,020
	Scotland	14,000	14,280	13,670	13,720	13,810	14,120	14,170	14,450	14,390	14,470
	Northern Ireland	7,340	7,200	7,170	6,520	7,310	7,080	7,140	7,350	7,270	6,870
	Wales	8,850	8,530	8,190	8,610	8,740	9,030	9,480	9,730	9,410	9,450
	UK	183,760	184,280	187,980	184,060	194,870	197,380	207,370	213,220	214,830	211,800

R.7 Placed 18 year old applicants by region of domicile: 1 day after A level results day

Placed 18 year old applicants: change relative to 2017 cycle totals

Applicant Status	Domicile	2009	2010	2011	2012	2013	2014	2015	2016	2017	2018
Placed	North East	-8%	-9%	-7%	-13%	-5%	-10%	-2%	-2%	0%	-6%
	North West	-5%	-6%	-4%	-8%	-5%	-4%	1%	0%	0%	-3%
	Yorkshire and The Humber	-14%	-15%	-12%	-14%	-9%	-6%	-1%	1%	0%	-4%
	East Midlands	-12%	-14%	-12%	-15%	-8%	-8%	-5%	-1%	0%	-1%
	West Midlands	-15%	-16%	-14%	-14%	-7%	-4%	-0%	1%	0%	-4%
	East of England	-16%	-15%	-11%	-14%	-9%	-8%	-5%	-1%	0%	-3%
	London	-30%	-30%	-26%	-26%	-18%	-17%	-9%	-4%	0%	2%
	South East	-18%	-15%	-14%	-15%	-12%	-11%	-5%	-1%	0%	1%
	South West	-16%	-13%	-9%	-15%	-10%	-9%	-3%	-2%	0%	-1%
	(England total)	-16%	-16%	-13%	-16%	-10%	-9%	-4%	-1%	0%	-1%
	Scotland	-3%	-1%	-5%	-5%	-4%	-2%	-2%	0%	0%	1%
	Northern Ireland	1%	-1%	-1%	-10%	1%	-3%	-2%	1%	0%	-6%
	Wales	-6%	-9%	-13%	-9%	-7%	-4%	1%	3%	0%	0%
	UK	-14%	-14%	-12%	-14%	-9%	-8%	-3%	-1%	0%	-1%

Note: The percentage change is not recorded in the above table for groups with fewer than 10 placed applicants in that cycle or in the 2017 cycle.

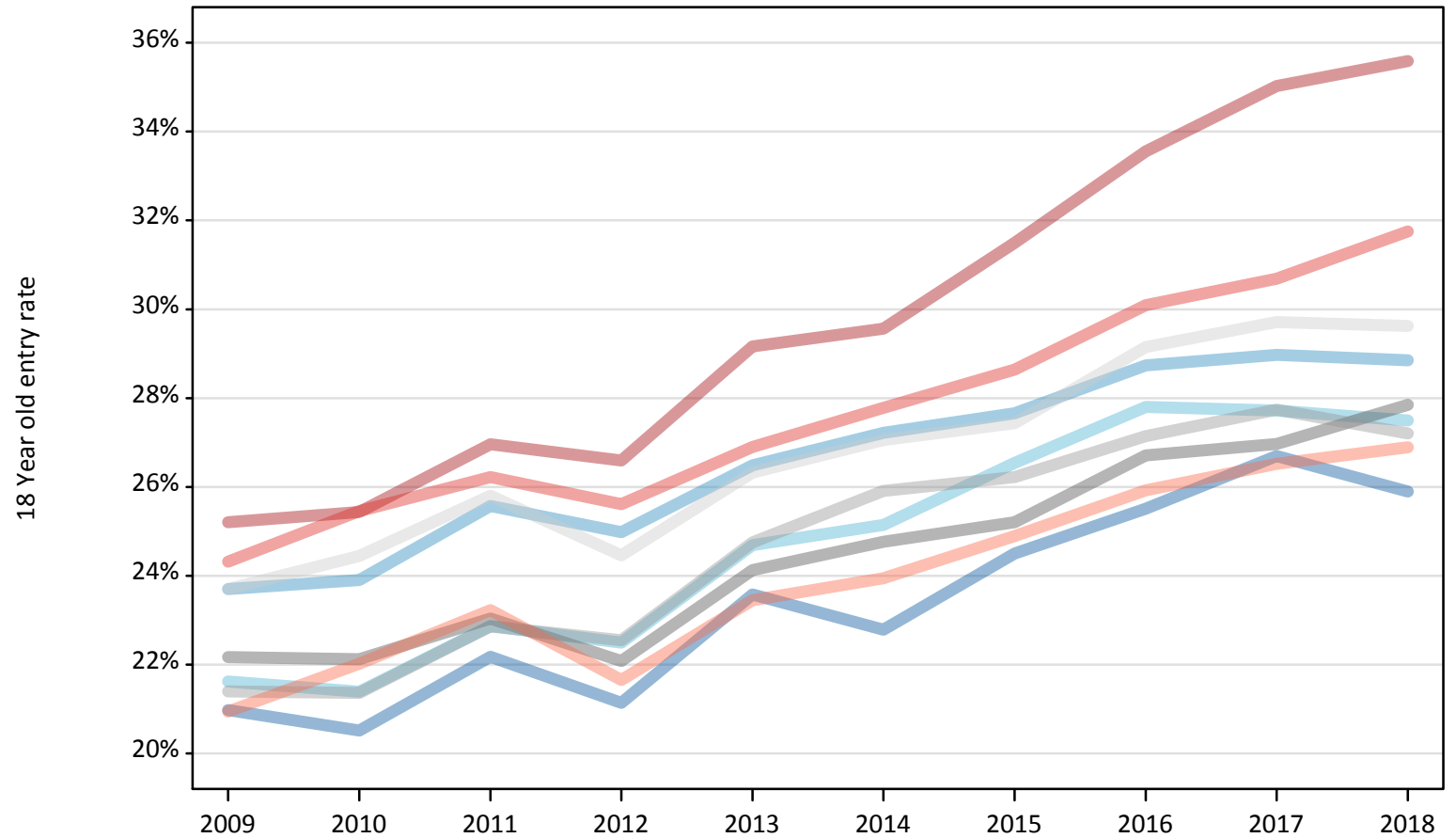
R.8 Placed 18 year old applicants by region of domicile: 1 day after A level results day

Placed 18 year old applicants: absolute change relative to 2017 cycle totals

Applicant Status	Domicile	2009	2010	2011	2012	2013	2014	2015	2016	2017	2018
Placed	North East	-580	-700	-560	-1,040	-420	-810	-180	-120	0	-450
	North West	-1,230	-1,420	-1,010	-1,940	-1,110	-870	180	80	0	-840
	Yorkshire and The Humber	-2,360	-2,610	-2,070	-2,440	-1,550	-1,100	-190	250	0	-710
	East Midlands	-1,750	-2,020	-1,750	-2,130	-1,220	-1,160	-720	-200	0	-130
	West Midlands	-2,790	-3,070	-2,640	-2,630	-1,370	-820	-70	110	0	-660
	East of England	-3,380	-3,130	-2,330	-2,870	-1,840	-1,600	-1,040	-150	0	-600
	London	-9,630	-9,550	-8,320	-8,350	-5,830	-5,350	-2,990	-1,300	0	660
	South East	-5,910	-4,870	-4,620	-4,780	-3,820	-3,440	-1,730	-430	0	240
	South West	-2,560	-2,100	-1,500	-2,360	-1,580	-1,450	-440	-290	0	-240
	(England total)	-30,180	-29,480	-24,790	-28,540	-18,750	-16,600	-7,180	-2,060	0	-2,740
	Scotland	-390	-110	-720	-670	-580	-270	-220	60	0	80
	Northern Ireland	70	-80	-110	-750	40	-190	-130	80	0	-400
	Wales	-560	-890	-1,220	-800	-680	-380	70	320	0	40
	UK	-31,070	-30,550	-26,840	-30,760	-19,960	-17,440	-7,450	-1,610	0	-3,020

R.9 Placed 18 year old applicants by region of domicile: 1 day after A level results day
Placed 18 year old applicants: entry rate

- North East
- North West
- Yorkshire and The Humber
- East Midlands
- West Midlands
- East of England
- London
- South East
- South West



R.10 Placed 18 year old applicants by region of domicile: 1 day after A level results day

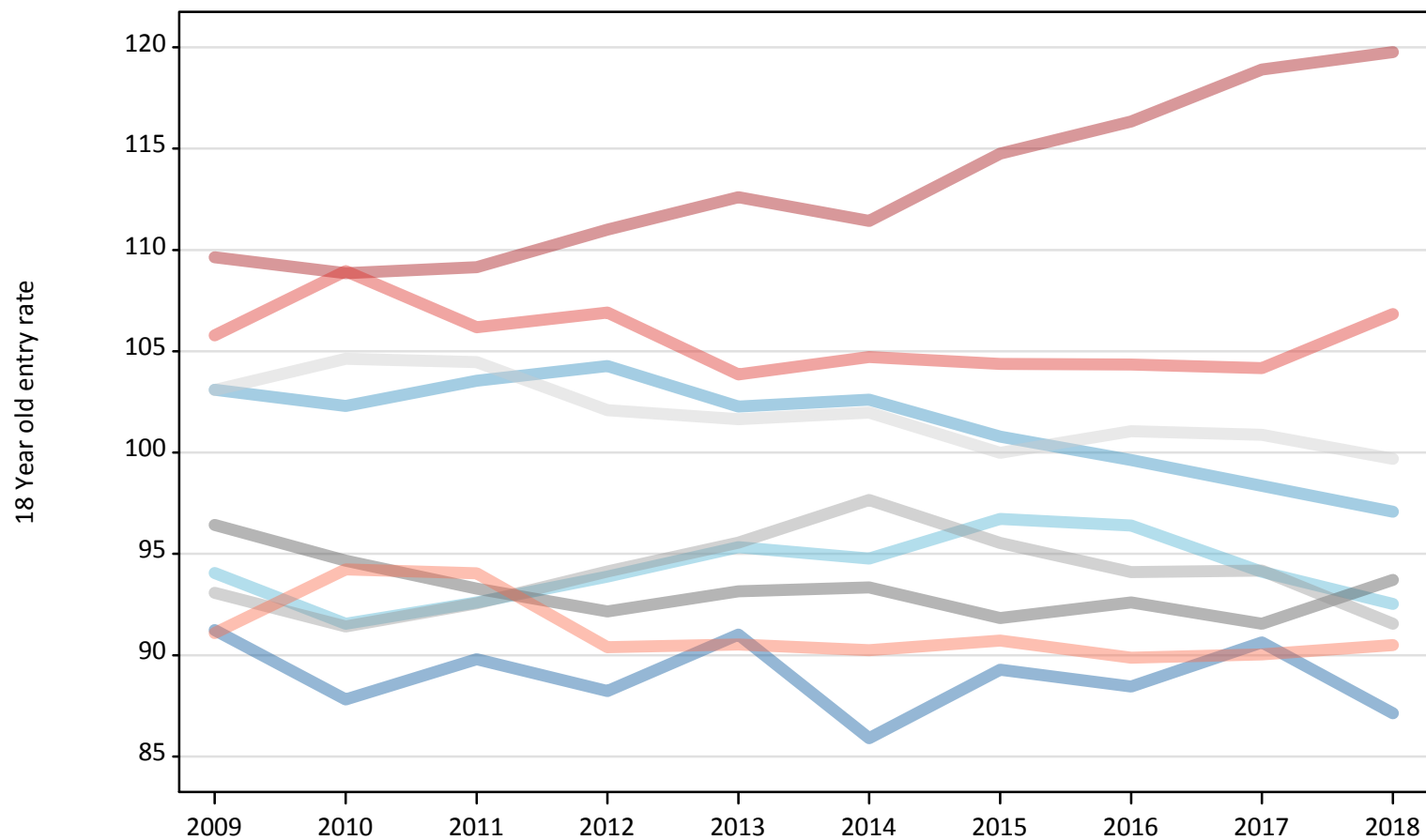
Placed 18 year old applicants: entry rate

Applicant Status	Domicile	2009	2010	2011	2012	2013	2014	2015	2016	2017	2018
Placed	North East	21.0%	20.5%	22.2%	21.1%	23.6%	22.8%	24.5%	25.5%	26.7%	25.9%
	North West	23.7%	23.9%	25.6%	25.0%	26.5%	27.2%	27.7%	28.7%	29.0%	28.8%
	Yorkshire and The Humber	21.6%	21.4%	22.9%	22.5%	24.7%	25.1%	26.5%	27.8%	27.7%	27.5%
	East Midlands	22.2%	22.1%	23.0%	22.1%	24.1%	24.8%	25.2%	26.7%	27.0%	27.8%
	West Midlands	21.4%	21.4%	22.9%	22.6%	24.8%	25.9%	26.2%	27.1%	27.7%	27.2%
	East of England	23.7%	24.4%	25.8%	24.5%	26.3%	27.1%	27.4%	29.1%	29.7%	29.6%
	London	25.2%	25.4%	27.0%	26.6%	29.2%	29.6%	31.5%	33.6%	35.0%	35.6%
	South East	24.3%	25.5%	26.2%	25.6%	26.9%	27.8%	28.6%	30.1%	30.7%	31.7%
	South West	20.9%	22.0%	23.2%	21.7%	23.4%	23.9%	24.9%	25.9%	26.5%	26.9%
	(England total)	23.0%	23.4%	24.7%	24.0%	25.9%	26.5%	27.4%	28.8%	29.5%	29.7%
	Scotland	21.6%	22.4%	21.7%	22.1%	22.4%	23.0%	23.5%	24.6%	25.1%	26.0%
	Northern Ireland	28.2%	28.2%	28.7%	25.9%	29.8%	29.2%	28.8%	30.0%	30.0%	29.6%
	Wales	22.0%	21.4%	21.2%	22.3%	23.1%	24.1%	25.2%	26.8%	26.5%	27.5%
	UK	23.0%	23.3%	24.4%	23.8%	25.6%	26.2%	27.1%	28.4%	29.0%	29.3%

R.11 Placed 18 year old applicants by region of domicile: 1 day after A level results day

Placed 18 year old applicants: entry rates (indexed to 100 = England)

- North East
- North West
- Yorkshire and The Humber
- East Midlands
- West Midlands
- East of England
- London
- South East
- South West



R.12 Placed 18 year old applicants by region of domicile: 1 day after A level results day

Placed 18 year old applicants: entry rate (indexed to 100 = England)

Applicant Status	Domicile	2009	2010	2011	2012	2013	2014	2015	2016	2017	2018
Placed	North East	91	88	90	88	91	86	89	88	91	87
	North West	103	102	104	104	102	103	101	100	98	97
	Yorkshire and The Humber	94	92	93	94	95	95	97	96	94	93
	East Midlands	96	95	93	92	93	93	92	93	92	94
	West Midlands	93	91	93	94	96	98	96	94	94	92
	East of England	103	105	104	102	102	102	100	101	101	100
	London	110	109	109	111	113	111	115	116	119	120
	South East	106	109	106	107	104	105	104	104	104	107
	South West	91	94	94	90	91	90	91	90	90	90
	(England total)	100	100	100	100	100	100	100	100	100	100