

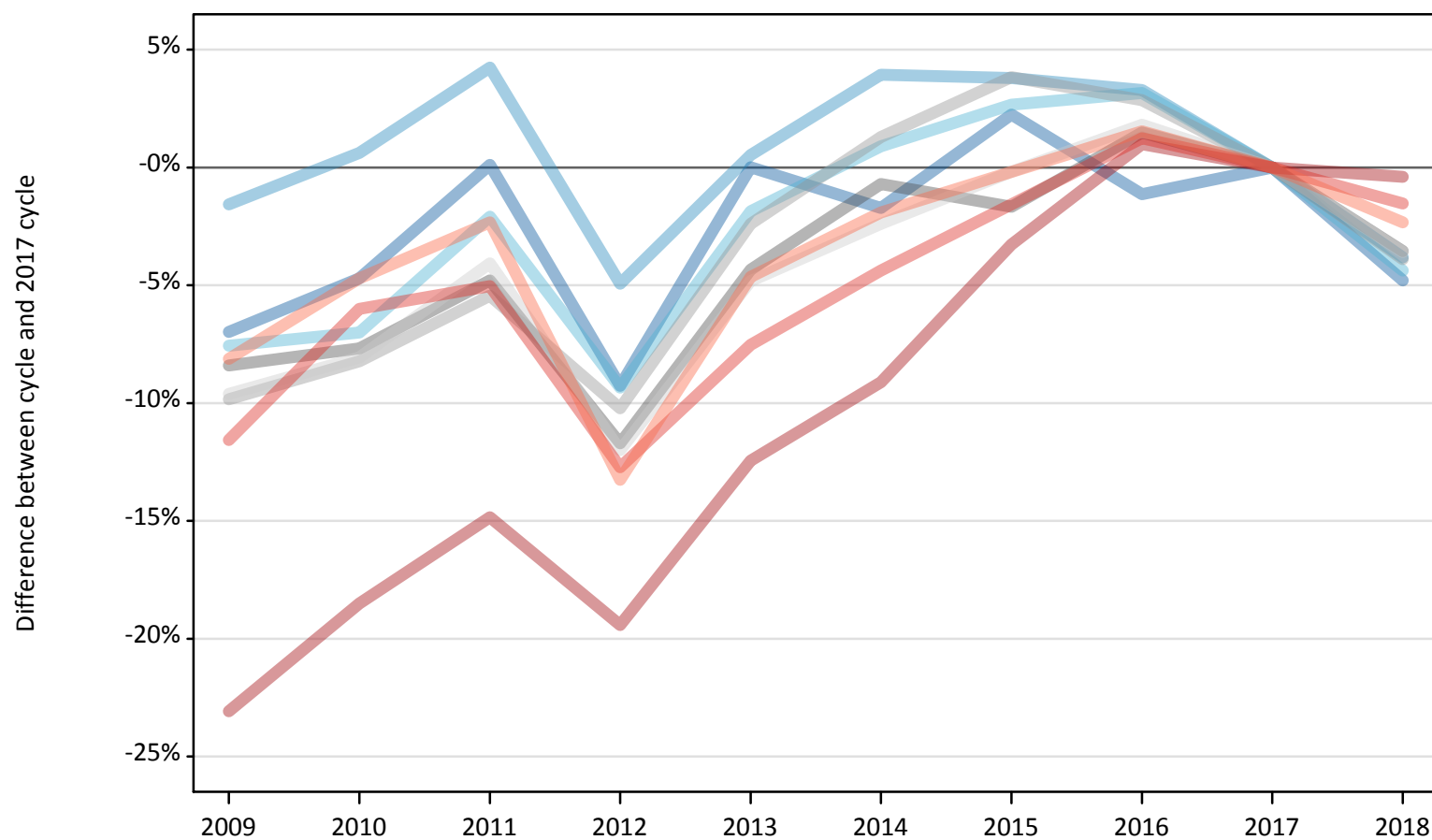
Daily Clearing Analysis: Region

Analysis at 00:05 on Tuesday 21 August 2018 (5 days after A level results day)

R.1 Placed applicants by region of domicile: 5 days after A level results day

Placed applicants: change relative to 2017 cycle totals

- North East
- North West
- Yorkshire and The Humber
- East Midlands
- West Midlands
- East of England
- London
- South East
- South West



Note: The percentage change is not plotted in the above chart for groups with fewer than 30 placed applicants in any one cycle.

R.2 Placed applicants by region of domicile: 5 days after A level results day

Applicant Status	Domicile	2009	2010	2011	2012	2013	2014	2015	2016	2017	2018
Placed	North East	13,710	14,050	14,760	13,370	14,740	14,490	15,070	14,570	14,740	14,030
	North West	43,160	44,120	45,710	41,690	44,080	45,570	45,510	45,290	43,850	42,180
	Yorkshire and The Humber	28,620	28,790	30,320	28,070	30,390	31,240	31,790	31,940	30,960	29,610
	East Midlands	24,530	24,720	25,500	23,650	25,620	26,590	26,330	27,180	26,780	25,830
	West Midlands	32,060	32,630	33,620	31,920	34,700	36,020	36,920	36,570	35,560	34,170
	East of England	32,420	32,970	34,410	31,560	34,130	35,010	35,800	36,510	35,860	34,580
	London	50,910	53,930	56,350	53,330	57,940	60,140	64,010	66,830	66,180	65,910
	South East	50,440	53,610	54,160	49,770	52,740	54,540	56,140	57,740	57,030	56,160
	South West	29,290	30,380	31,130	27,650	30,400	31,270	31,810	32,370	31,880	31,140
	(England total)	305,130	315,200	325,950	301,010	324,750	334,870	343,390	349,010	342,840	333,610
	Scotland	25,810	27,450	27,150	27,020	27,640	28,500	31,390	32,760	33,330	33,860
	Northern Ireland	11,870	12,200	12,480	11,570	13,000	12,910	12,660	13,480	13,080	12,320
	Wales	17,130	16,370	16,160	16,960	17,150	17,950	18,320	18,590	18,150	17,680
	UK	359,930	371,230	381,740	356,560	382,540	394,220	405,760	413,840	407,400	397,470

R.3 Placed applicants by region of domicile: 5 days after A level results day

Placed applicants: change relative to 2017 cycle totals

Applicant Status	Domicile	2009	2010	2011	2012	2013	2014	2015	2016	2017	2018
Placed	North East	-7%	-5%	0%	-9%	0%	-2%	2%	-1%	0%	-5%
	North West	-2%	1%	4%	-5%	1%	4%	4%	3%	0%	-4%
	Yorkshire and The Humber	-8%	-7%	-2%	-9%	-2%	1%	3%	3%	0%	-4%
	East Midlands	-8%	-8%	-5%	-12%	-4%	-1%	-2%	1%	0%	-4%
	West Midlands	-10%	-8%	-5%	-10%	-2%	1%	4%	3%	0%	-4%
	East of England	-10%	-8%	-4%	-12%	-5%	-2%	-0%	2%	0%	-4%
	London	-23%	-19%	-15%	-19%	-12%	-9%	-3%	1%	0%	-0%
	South East	-12%	-6%	-5%	-13%	-8%	-4%	-2%	1%	0%	-2%
	South West	-8%	-5%	-2%	-13%	-5%	-2%	-0%	2%	0%	-2%
	(England total)	-11%	-8%	-5%	-12%	-5%	-2%	0%	2%	0%	-3%
	Scotland	-23%	-18%	-19%	-19%	-17%	-14%	-6%	-2%	0%	2%
	Northern Ireland	-9%	-7%	-5%	-12%	-1%	-1%	-3%	3%	0%	-6%
	Wales	-6%	-10%	-11%	-7%	-6%	-1%	1%	2%	0%	-3%
	UK	-12%	-9%	-6%	-12%	-6%	-3%	-0%	2%	0%	-2%

Note: The percentage change is not recorded in the above table for groups with fewer than 10 placed applicants in that cycle or in the 2017 cycle.

R.4 Placed applicants by region of domicile: 5 days after A level results day

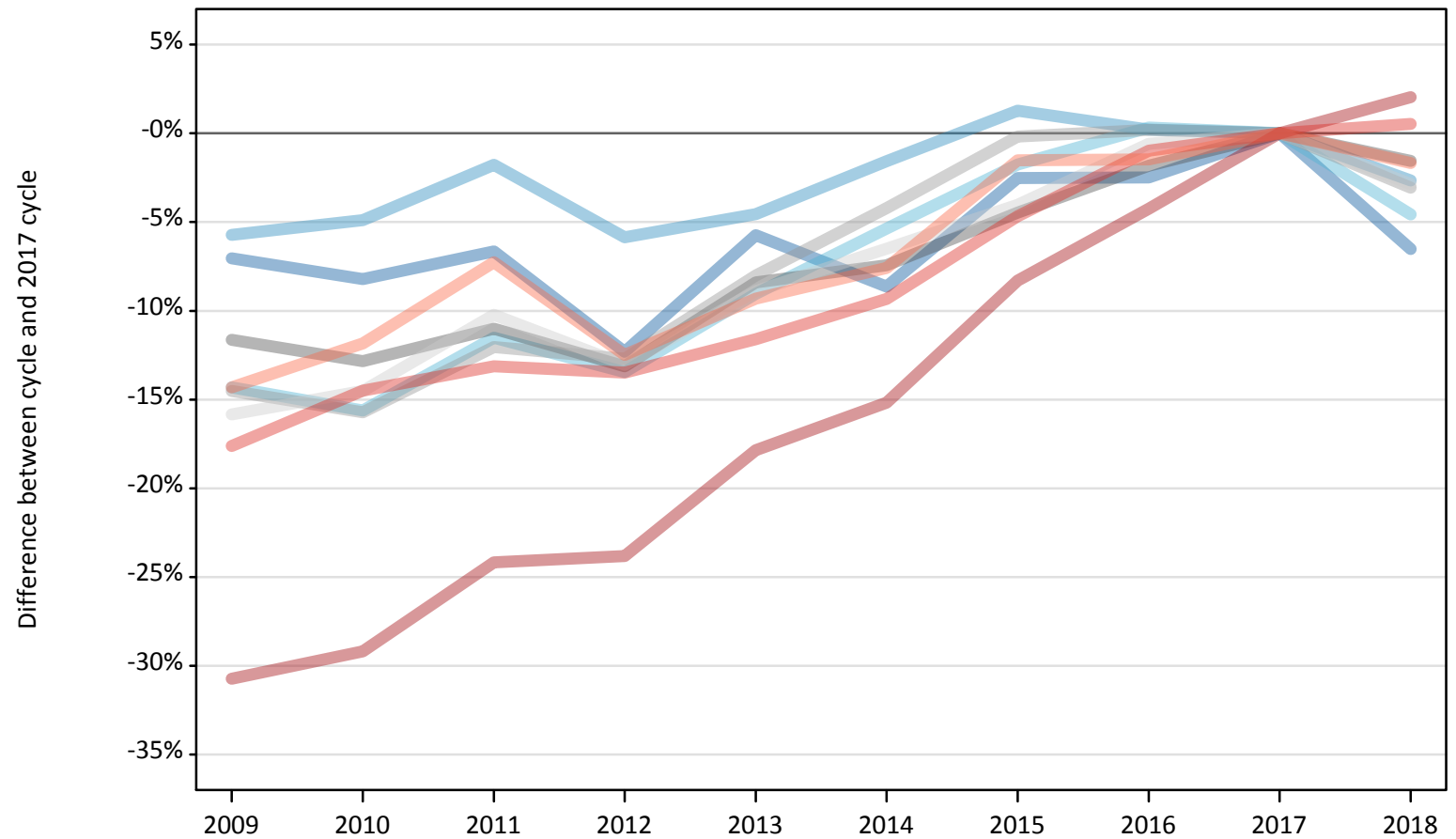
Placed applicants: absolute change relative to 2017 cycle totals

Applicant Status	Domicile	2009	2010	2011	2012	2013	2014	2015	2016	2017	2018
Placed	North East	-1,030	-690	20	-1,370	0	-250	330	-170	0	-710
	North West	-690	270	1,860	-2,160	230	1,720	1,670	1,440	0	-1,670
	Yorkshire and The Humber	-2,340	-2,170	-650	-2,890	-580	280	830	980	0	-1,350
	East Midlands	-2,250	-2,060	-1,280	-3,130	-1,160	-190	-450	400	0	-950
	West Midlands	-3,500	-2,930	-1,940	-3,630	-850	460	1,360	1,020	0	-1,390
	East of England	-3,450	-2,890	-1,460	-4,300	-1,730	-860	-70	650	0	-1,290
	London	-15,270	-12,250	-9,820	-12,850	-8,230	-6,030	-2,170	660	0	-270
	South East	-6,600	-3,420	-2,870	-7,260	-4,290	-2,500	-890	710	0	-870
	South West	-2,590	-1,500	-740	-4,230	-1,480	-610	-60	490	0	-740
	(England total)	-37,710	-27,640	-16,890	-41,830	-18,090	-7,970	550	6,170	0	-9,230
	Scotland	-7,530	-5,880	-6,180	-6,310	-5,690	-4,830	-1,940	-570	0	530
	Northern Ireland	-1,210	-880	-600	-1,510	-80	-170	-420	400	0	-760
	Wales	-1,020	-1,780	-1,990	-1,190	-1,000	-200	180	440	0	-470
	UK	-47,470	-36,170	-25,660	-50,840	-24,870	-13,180	-1,640	6,440	0	-9,940

R.5 Placed 18 year old applicants by region of domicile: 5 days after A level results day

Placed 18 year old applicants: change relative to 2017 cycle totals

- North East
- North West
- Yorkshire and The Humber
- East Midlands
- West Midlands
- East of England
- London
- South East
- South West



Note: The percentage change is not plotted in the above chart for groups with fewer than 30 placed applicants in any one cycle.

R.6 Placed 18 year old applicants by region of domicile: 5 days after A level results day

Applicant Status	Domicile	2009	2010	2011	2012	2013	2014	2015	2016	2017	2018
Placed	North East	7,780	7,680	7,810	7,340	7,890	7,640	8,160	8,160	8,370	7,820
	North West	24,400	24,610	25,420	24,370	24,700	25,470	26,210	25,930	25,880	25,190
	Yorkshire and The Humber	15,920	15,670	16,430	16,070	16,890	17,570	18,250	18,630	18,570	17,720
	East Midlands	14,060	13,870	14,160	13,820	14,580	14,730	15,200	15,620	15,910	15,660
	West Midlands	17,610	17,360	18,120	17,990	18,950	19,730	20,570	20,640	20,600	19,970
	East of England	18,880	19,170	20,130	19,500	20,430	20,970	21,520	22,300	22,430	21,790
	London	25,320	25,880	27,710	27,840	30,020	31,000	33,510	34,990	36,540	37,290
	South East	28,560	29,640	30,110	29,990	30,640	31,430	33,040	34,330	34,660	34,850
	South West	14,770	15,190	15,980	15,080	15,630	15,930	16,970	16,980	17,230	16,950
	(England total)	167,280	169,070	175,880	172,000	179,720	184,470	193,430	197,580	200,190	197,240
	Scotland	14,210	14,450	13,800	13,890	14,010	14,230	14,340	14,590	14,560	14,570
	Northern Ireland	8,300	8,020	7,910	7,460	8,140	7,840	7,770	7,990	7,910	7,350
	Wales	9,800	9,400	9,010	9,440	9,420	9,760	10,200	10,380	10,050	9,890
	UK	199,600	200,930	206,610	202,790	211,290	216,300	225,730	230,540	232,720	229,040

R.7 Placed 18 year old applicants by region of domicile: 5 days after A level results day

Placed 18 year old applicants: change relative to 2017 cycle totals

Applicant Status	Domicile	2009	2010	2011	2012	2013	2014	2015	2016	2017	2018
Placed	North East	-7%	-8%	-7%	-12%	-6%	-9%	-3%	-2%	0%	-7%
	North West	-6%	-5%	-2%	-6%	-5%	-2%	1%	0%	0%	-3%
	Yorkshire and The Humber	-14%	-16%	-12%	-13%	-9%	-5%	-2%	0%	0%	-5%
	East Midlands	-12%	-13%	-11%	-13%	-8%	-7%	-4%	-2%	0%	-2%
	West Midlands	-15%	-16%	-12%	-13%	-8%	-4%	-0%	0%	0%	-3%
	East of England	-16%	-15%	-10%	-13%	-9%	-6%	-4%	-1%	0%	-3%
	London	-31%	-29%	-24%	-24%	-18%	-15%	-8%	-4%	0%	2%
	South East	-18%	-14%	-13%	-13%	-12%	-9%	-5%	-1%	0%	1%
	South West	-14%	-12%	-7%	-12%	-9%	-8%	-2%	-1%	0%	-2%
	(England total)	-16%	-16%	-12%	-14%	-10%	-8%	-3%	-1%	0%	-1%
	Scotland	-2%	-1%	-5%	-5%	-4%	-2%	-2%	0%	0%	0%
	Northern Ireland	5%	1%	0%	-6%	3%	-1%	-2%	1%	0%	-7%
	Wales	-2%	-7%	-10%	-6%	-6%	-3%	1%	3%	0%	-2%
	UK	-14%	-14%	-11%	-13%	-9%	-7%	-3%	-1%	0%	-2%

Note: The percentage change is not recorded in the above table for groups with fewer than 10 placed applicants in that cycle or in the 2017 cycle.

R.8 Placed 18 year old applicants by region of domicile: 5 days after A level results day

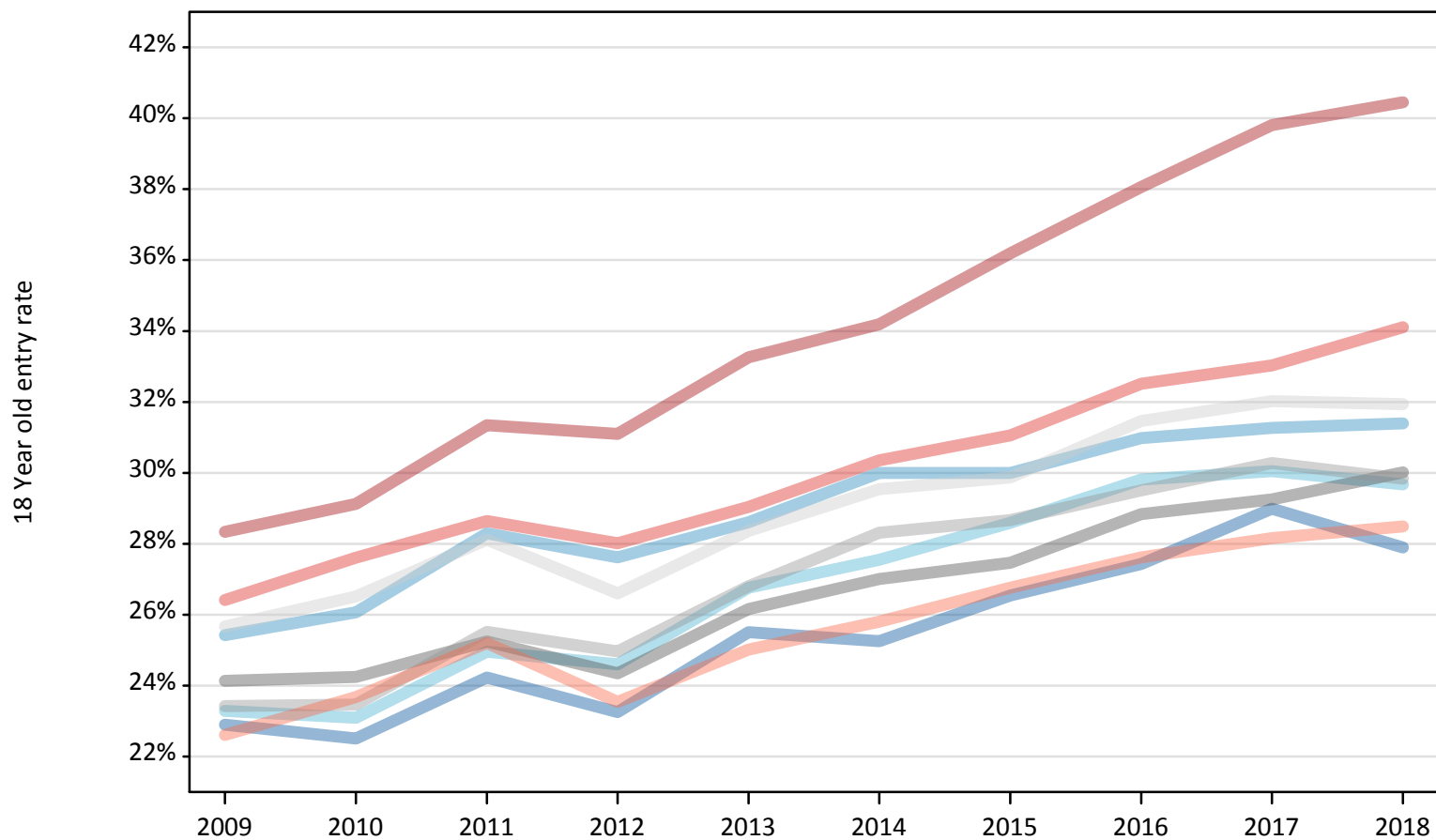
Placed 18 year old applicants: absolute change relative to 2017 cycle totals

Applicant Status	Domicile	2009	2010	2011	2012	2013	2014	2015	2016	2017	2018
Placed	North East	-590	-690	-560	-1,030	-480	-720	-210	-210	0	-550
	North West	-1,480	-1,270	-460	-1,510	-1,180	-410	330	60	0	-690
	Yorkshire and The Humber	-2,660	-2,900	-2,140	-2,500	-1,680	-1,000	-330	60	0	-850
	East Midlands	-1,850	-2,040	-1,750	-2,090	-1,340	-1,180	-710	-290	0	-250
	West Midlands	-2,990	-3,240	-2,480	-2,620	-1,650	-870	-40	40	0	-630
	East of England	-3,550	-3,250	-2,290	-2,920	-1,990	-1,460	-900	-130	0	-640
	London	-11,230	-10,670	-8,830	-8,700	-6,530	-5,550	-3,030	-1,550	0	750
	South East	-6,110	-5,030	-4,550	-4,670	-4,020	-3,240	-1,620	-340	0	180
	South West	-2,470	-2,040	-1,250	-2,150	-1,610	-1,310	-260	-250	0	-290
	(England total)	-32,920	-31,120	-24,310	-28,200	-20,470	-15,720	-6,770	-2,610	0	-2,960
	Scotland	-350	-120	-760	-670	-560	-330	-230	20	0	0
	Northern Ireland	400	110	0	-450	240	-70	-140	80	0	-560
	Wales	-250	-650	-1,040	-610	-630	-290	150	330	0	-160
	UK	-33,120	-31,780	-26,110	-29,930	-21,430	-16,410	-6,990	-2,180	0	-3,670

R.9 Placed 18 year old applicants by region of domicile: 5 days after A level results day

Placed 18 year old applicants: entry rate

- North East
- North West
- Yorkshire and The Humber
- East Midlands
- West Midlands
- East of England
- London
- South East
- South West



R.10 Placed 18 year old applicants by region of domicile: 5 days after A level results day

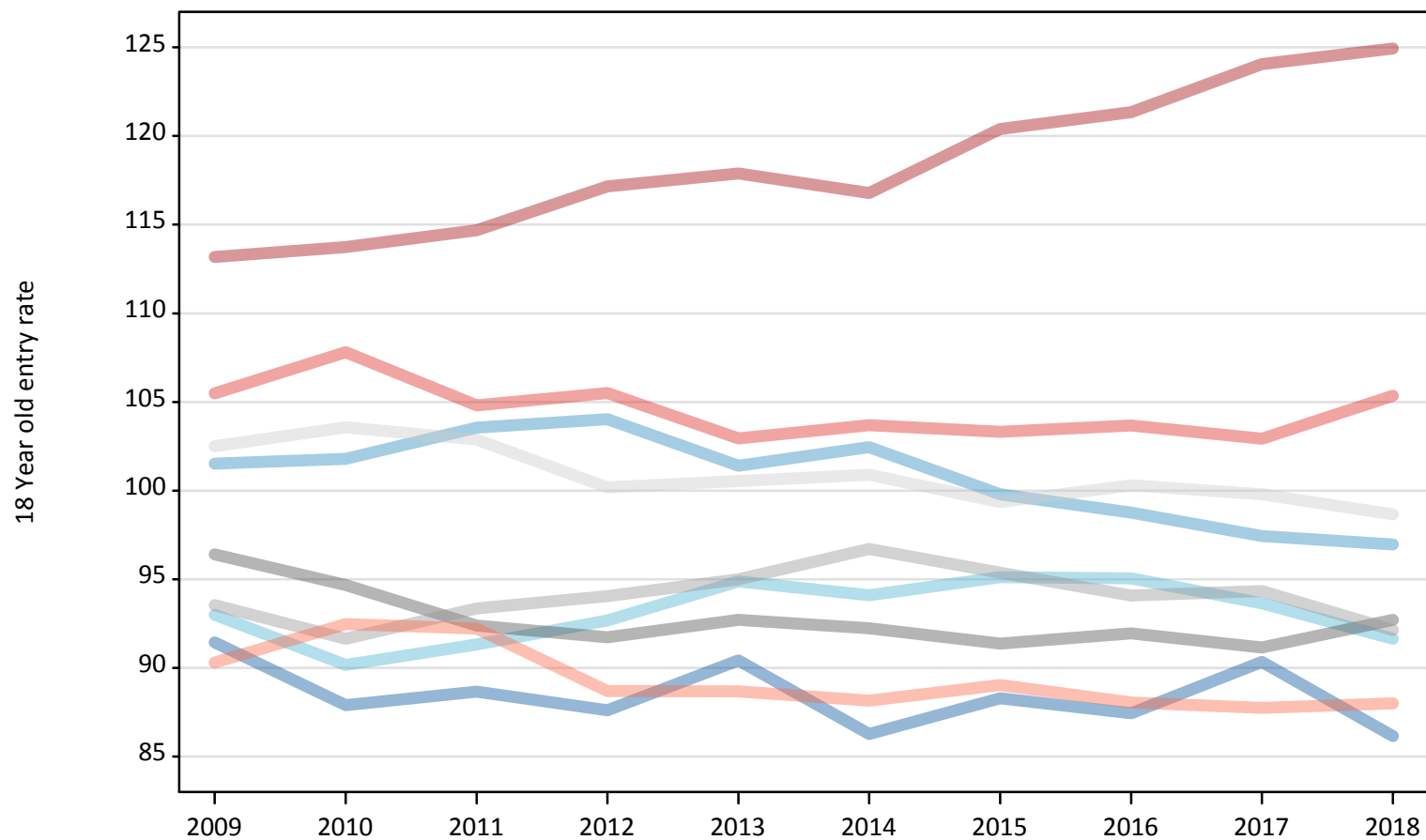
Placed 18 year old applicants: entry rate

Applicant Status	Domicile	2009	2010	2011	2012	2013	2014	2015	2016	2017	2018
Placed	North East	22.9%	22.5%	24.2%	23.3%	25.5%	25.3%	26.5%	27.4%	29.0%	27.9%
	North West	25.4%	26.1%	28.3%	27.6%	28.6%	30.0%	30.0%	31.0%	31.3%	31.4%
	Yorkshire and The Humber	23.3%	23.1%	25.0%	24.6%	26.8%	27.5%	28.6%	29.8%	30.1%	29.7%
	East Midlands	24.1%	24.2%	25.2%	24.4%	26.2%	27.0%	27.5%	28.8%	29.3%	30.0%
	West Midlands	23.4%	23.5%	25.5%	25.0%	26.8%	28.3%	28.7%	29.5%	30.3%	29.8%
	East of England	25.7%	26.5%	28.1%	26.6%	28.4%	29.5%	29.9%	31.5%	32.0%	31.9%
	London	28.3%	29.1%	31.3%	31.1%	33.3%	34.2%	36.2%	38.1%	39.8%	40.5%
	South East	26.4%	27.6%	28.6%	28.0%	29.0%	30.4%	31.1%	32.5%	33.0%	34.1%
	South West	22.6%	23.7%	25.2%	23.5%	25.0%	25.8%	26.8%	27.6%	28.2%	28.5%
	(England total)	25.0%	25.6%	27.3%	26.5%	28.2%	29.3%	30.1%	31.4%	32.1%	32.4%
	Scotland	21.9%	22.6%	22.0%	22.4%	22.7%	23.2%	23.8%	24.8%	25.4%	26.2%
	Northern Ireland	31.9%	31.4%	31.6%	29.7%	33.2%	32.3%	31.3%	32.7%	32.7%	31.7%
	Wales	24.3%	23.6%	23.4%	24.5%	24.9%	26.0%	27.1%	28.6%	28.3%	28.8%
	UK	25.0%	25.4%	26.8%	26.2%	27.8%	28.7%	29.5%	30.8%	31.4%	31.7%

R.11 Placed 18 year old applicants by region of domicile: 5 days after A level results day

Placed 18 year old applicants: entry rates (indexed to 100 = England)

- North East
- North West
- Yorkshire and The Humber
- East Midlands
- West Midlands
- East of England
- London
- South East
- South West



R.12 Placed 18 year old applicants by region of domicile: 5 days after A level results day

Placed 18 year old applicants: entry rate (indexed to 100 = England)

Applicant Status	Domicile	2009	2010	2011	2012	2013	2014	2015	2016	2017	2018
Placed	North East	91	88	89	88	90	86	88	87	90	86
	North West	102	102	104	104	101	102	100	99	97	97
	Yorkshire and The Humber	93	90	91	93	95	94	95	95	94	92
	East Midlands	96	95	92	92	93	92	91	92	91	93
	West Midlands	94	92	93	94	95	97	95	94	94	92
	East of England	103	104	103	100	101	101	99	100	100	99
	London	113	114	115	117	118	117	120	121	124	125
	South East	105	108	105	106	103	104	103	104	103	105
	South West	90	92	92	89	89	88	89	88	88	88
	(England total)	100	100	100	100	100	100	100	100	100	100