

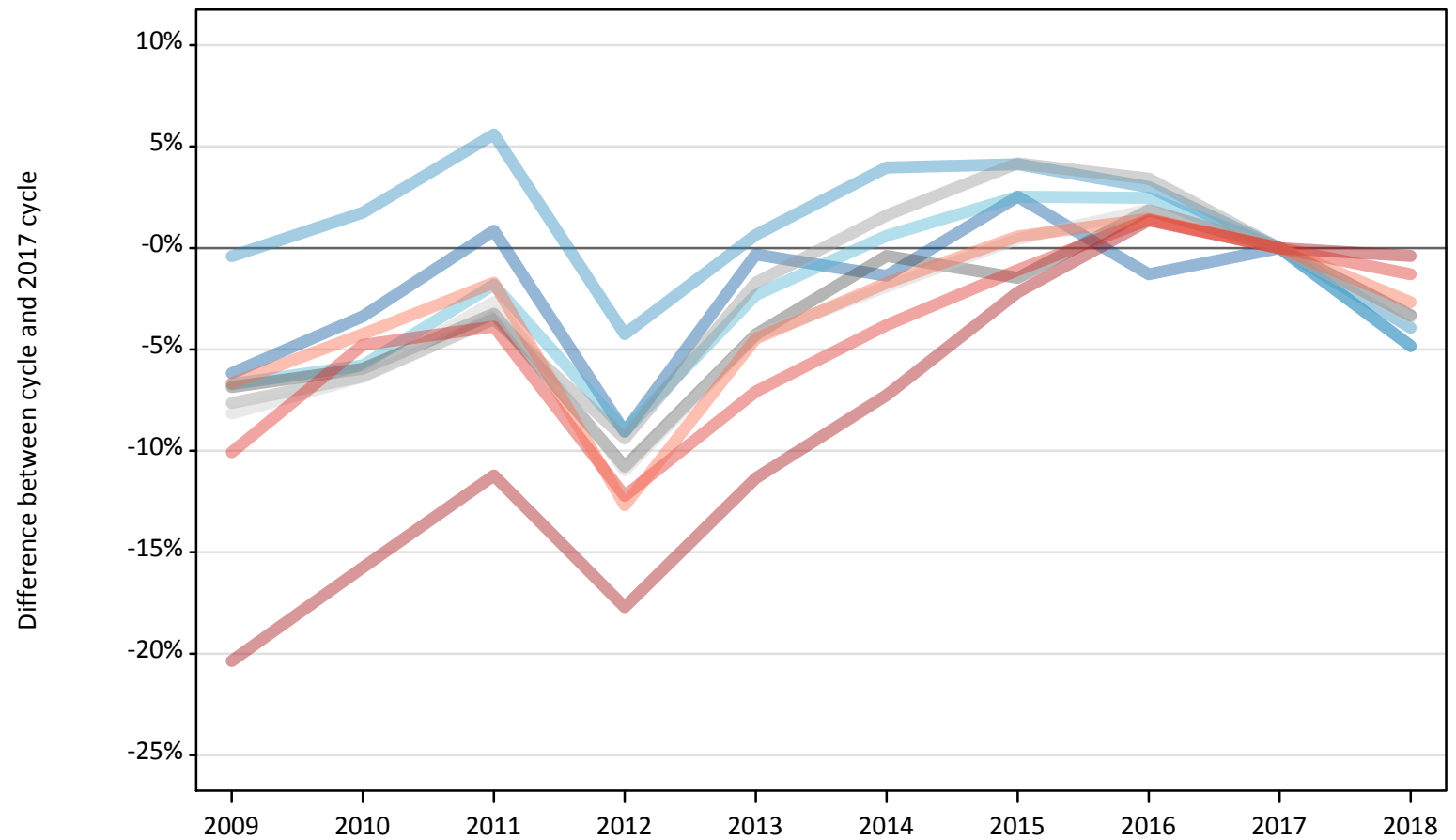
Daily Clearing Analysis: Region

Analysis at 00:05 on Friday 24 August 2018 (8 days after A level results day)

R.1 Placed applicants by region of domicile: 8 days after A level results day

Placed applicants: change relative to 2017 cycle totals

- North East
- North West
- Yorkshire and The Humber
- East Midlands
- West Midlands
- East of England
- London
- South East
- South West



Note: The percentage change is not plotted in the above chart for groups with fewer than 30 placed applicants in any one cycle.

R.2 Placed applicants by region of domicile: 8 days after A level results day

Applicant Status	Domicile	2009	2010	2011	2012	2013	2014	2015	2016	2017	2018
Placed	North East	14,240	14,660	15,300	13,800	15,130	14,970	15,560	14,980	15,180	14,440
	North West	45,130	46,100	47,850	43,390	45,610	47,110	47,180	46,670	45,310	43,530
	Yorkshire and The Humber	29,880	30,170	31,440	29,140	31,280	32,210	32,830	32,810	32,020	30,480
	East Midlands	25,590	25,830	26,580	24,510	26,300	27,360	27,060	27,980	27,470	26,550
	West Midlands	33,780	34,260	35,300	33,140	35,950	37,170	38,100	37,830	36,580	35,370
	East of England	33,730	34,390	35,750	32,700	35,130	36,030	36,880	37,420	36,720	35,460
	London	54,870	58,040	61,180	56,700	61,080	63,900	67,390	69,830	68,900	68,630
	South East	52,430	55,510	56,040	51,170	54,170	56,080	57,660	59,110	58,300	57,540
	South West	30,500	31,290	32,110	28,530	31,220	32,110	32,860	33,140	32,670	31,800
	(England total)	320,130	330,250	341,540	313,060	335,850	346,940	355,540	359,780	353,140	343,800
	Scotland	26,340	28,130	27,610	27,580	28,090	28,910	31,830	33,140	33,850	34,200
	Northern Ireland	12,950	13,110	13,300	12,350	13,700	13,750	13,470	14,320	13,820	13,270
	Wales	17,910	17,070	16,870	17,520	17,700	18,440	18,780	18,990	18,540	18,100
	UK	377,330	388,560	399,320	370,520	395,340	408,040	419,620	426,220	419,350	409,370

R.3 Placed applicants by region of domicile: 8 days after A level results day

Placed applicants: change relative to 2017 cycle totals

Applicant Status	Domicile	2009	2010	2011	2012	2013	2014	2015	2016	2017	2018
Placed	North East	-6%	-3%	1%	-9%	-0%	-1%	3%	-1%	0%	-5%
	North West	-0%	2%	6%	-4%	1%	4%	4%	3%	0%	-4%
	Yorkshire and The Humber	-7%	-6%	-2%	-9%	-2%	1%	3%	2%	0%	-5%
	East Midlands	-7%	-6%	-3%	-11%	-4%	-0%	-1%	2%	0%	-3%
	West Midlands	-8%	-6%	-4%	-9%	-2%	2%	4%	3%	0%	-3%
	East of England	-8%	-6%	-3%	-11%	-4%	-2%	0%	2%	0%	-3%
	London	-20%	-16%	-11%	-18%	-11%	-7%	-2%	1%	0%	-0%
	South East	-10%	-5%	-4%	-12%	-7%	-4%	-1%	1%	0%	-1%
	South West	-7%	-4%	-2%	-13%	-4%	-2%	1%	1%	0%	-3%
	(England total)	-9%	-6%	-3%	-11%	-5%	-2%	1%	2%	0%	-3%
	Scotland	-22%	-17%	-18%	-19%	-17%	-15%	-6%	-2%	0%	1%
	Northern Ireland	-6%	-5%	-4%	-11%	-1%	-1%	-3%	4%	0%	-4%
	Wales	-3%	-8%	-9%	-6%	-5%	-1%	1%	2%	0%	-2%
	UK	-10%	-7%	-5%	-12%	-6%	-3%	0%	2%	0%	-2%

Note: The percentage change is not recorded in the above table for groups with fewer than 10 placed applicants in that cycle or in the 2017 cycle.

R.4 Placed applicants by region of domicile: 8 days after A level results day

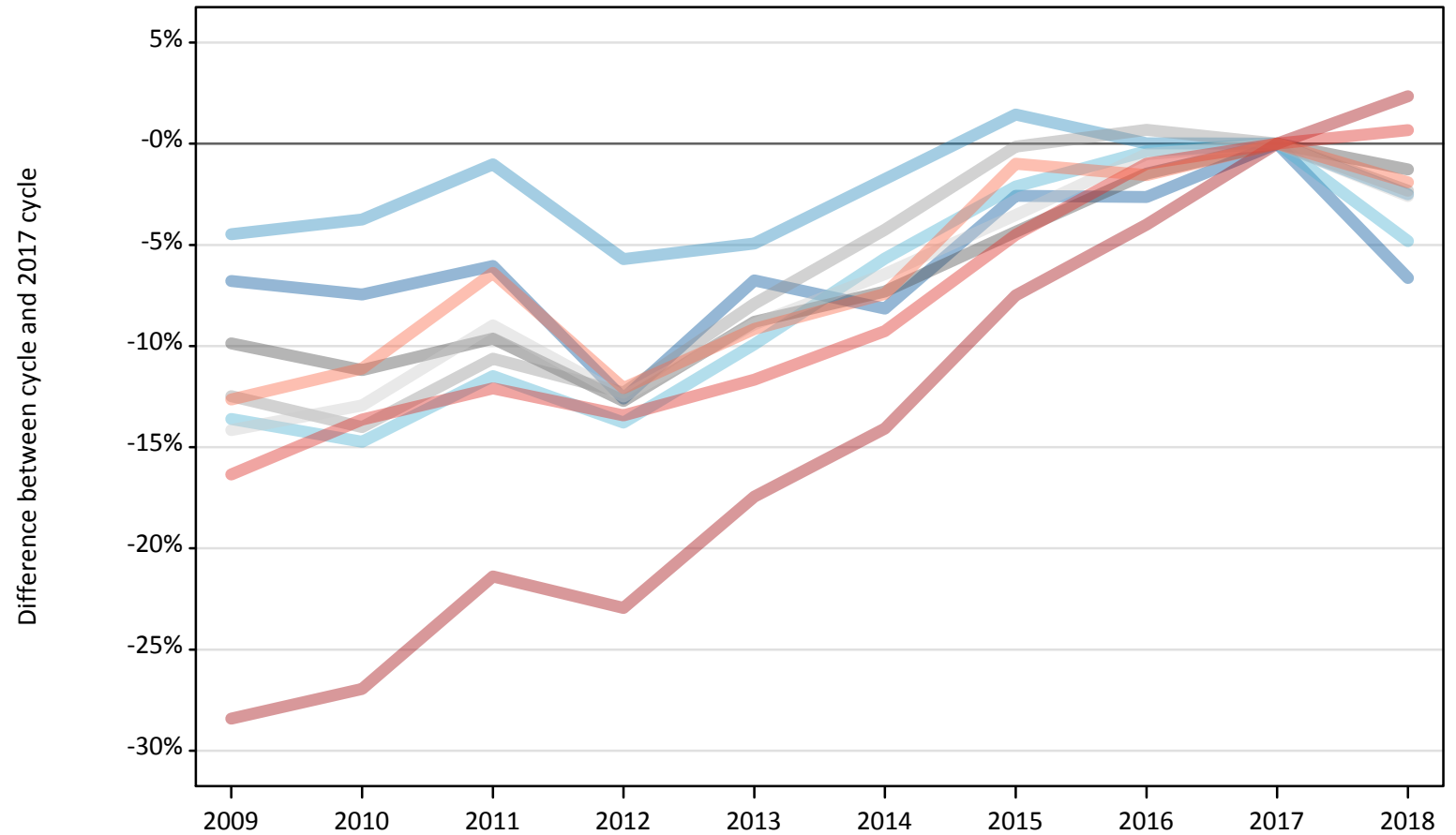
Placed applicants: absolute change relative to 2017 cycle totals

Applicant Status	Domicile	2009	2010	2011	2012	2013	2014	2015	2016	2017	2018
Placed	North East	-940	-510	130	-1,380	-50	-210	380	-200	0	-740
	North West	-180	790	2,540	-1,930	300	1,800	1,870	1,360	0	-1,780
	Yorkshire and The Humber	-2,150	-1,850	-580	-2,890	-740	190	810	790	0	-1,550
	East Midlands	-1,880	-1,640	-890	-2,960	-1,170	-110	-400	510	0	-920
	West Midlands	-2,800	-2,320	-1,280	-3,440	-620	590	1,530	1,250	0	-1,210
	East of England	-3,000	-2,330	-970	-4,020	-1,590	-700	160	700	0	-1,260
	London	-14,030	-10,860	-7,720	-12,200	-7,820	-4,990	-1,510	940	0	-270
	South East	-5,870	-2,790	-2,260	-7,130	-4,130	-2,210	-630	820	0	-750
	South West	-2,180	-1,390	-560	-4,140	-1,460	-560	190	470	0	-870
	(England total)	-33,010	-22,890	-11,600	-40,080	-17,290	-6,200	2,400	6,640	0	-9,340
	Scotland	-7,500	-5,720	-6,240	-6,270	-5,760	-4,940	-2,020	-710	0	360
	Northern Ireland	-880	-710	-530	-1,470	-120	-70	-350	490	0	-560
	Wales	-630	-1,470	-1,670	-1,020	-840	-100	240	450	0	-440
	UK	-42,020	-30,790	-20,030	-48,830	-24,000	-11,310	270	6,870	0	-9,970

R.5 Placed 18 year old applicants by region of domicile: 8 days after A level results day

Placed 18 year old applicants: change relative to 2017 cycle totals

- North East
- North West
- Yorkshire and The Humber
- East Midlands
- West Midlands
- East of England
- London
- South East
- South West



Note: The percentage change is not plotted in the above chart for groups with fewer than 30 placed applicants in any one cycle.

R.6 Placed 18 year old applicants by region of domicile: 8 days after A level results day

Applicant Status	Domicile	2009	2010	2011	2012	2013	2014	2015	2016	2017	2018
Placed	North East	8,000	7,940	8,060	7,500	8,000	7,880	8,360	8,360	8,580	8,010
	North West	25,330	25,530	26,250	25,010	25,210	26,050	26,900	26,520	26,520	25,860
	Yorkshire and The Humber	16,450	16,230	16,850	16,420	17,150	17,960	18,640	18,970	19,040	18,120
	East Midlands	14,590	14,380	14,630	14,130	14,760	15,000	15,480	15,950	16,190	15,980
	West Midlands	18,410	18,080	18,790	18,440	19,360	20,130	21,000	21,170	21,030	20,540
	East of England	19,590	19,860	20,770	19,960	20,780	21,350	22,010	22,700	22,810	22,220
	London	26,920	27,470	29,560	28,970	31,040	32,310	34,780	36,100	37,600	38,490
	South East	29,470	30,430	30,970	30,500	31,120	31,970	33,640	34,880	35,230	35,460
	South West	15,270	15,540	16,360	15,370	15,880	16,180	17,310	17,210	17,480	17,150
	(England total)	174,020	175,450	182,240	176,290	183,310	188,830	198,120	201,850	204,470	201,830
	Scotland	14,370	14,600	13,910	14,000	14,080	14,290	14,400	14,650	14,620	14,600
	Northern Ireland	9,080	8,670	8,470	7,990	8,540	8,340	8,240	8,470	8,340	7,890
	Wales	10,200	9,700	9,320	9,650	9,570	9,950	10,380	10,520	10,190	10,030
	UK	207,660	208,420	213,930	207,930	215,510	221,410	231,140	235,480	237,620	234,350

R.7 Placed 18 year old applicants by region of domicile: 8 days after A level results day

Placed 18 year old applicants: change relative to 2017 cycle totals

Applicant Status	Domicile	2009	2010	2011	2012	2013	2014	2015	2016	2017	2018
Placed	North East	-7%	-7%	-6%	-13%	-7%	-8%	-3%	-3%	0%	-7%
	North West	-4%	-4%	-1%	-6%	-5%	-2%	1%	0%	0%	-2%
	Yorkshire and The Humber	-14%	-15%	-11%	-14%	-10%	-6%	-2%	-0%	0%	-5%
	East Midlands	-10%	-11%	-10%	-13%	-9%	-7%	-4%	-1%	0%	-1%
	West Midlands	-12%	-14%	-11%	-12%	-8%	-4%	-0%	1%	0%	-2%
	East of England	-14%	-13%	-9%	-12%	-9%	-6%	-4%	-1%	0%	-3%
	London	-28%	-27%	-21%	-23%	-17%	-14%	-7%	-4%	0%	2%
	South East	-16%	-14%	-12%	-13%	-12%	-9%	-5%	-1%	0%	1%
	South West	-13%	-11%	-6%	-12%	-9%	-7%	-1%	-2%	0%	-2%
	(England total)	-15%	-14%	-11%	-14%	-10%	-8%	-3%	-1%	0%	-1%
	Scotland	-2%	-0%	-5%	-4%	-4%	-2%	-2%	0%	0%	-0%
	Northern Ireland	9%	4%	1%	-4%	2%	0%	-1%	2%	0%	-5%
	Wales	0%	-5%	-8%	-5%	-6%	-2%	2%	3%	0%	-2%
	UK	-13%	-12%	-10%	-12%	-9%	-7%	-3%	-1%	0%	-1%

Note: The percentage change is not recorded in the above table for groups with fewer than 10 placed applicants in that cycle or in the 2017 cycle.

R.8 Placed 18 year old applicants by region of domicile: 8 days after A level results day

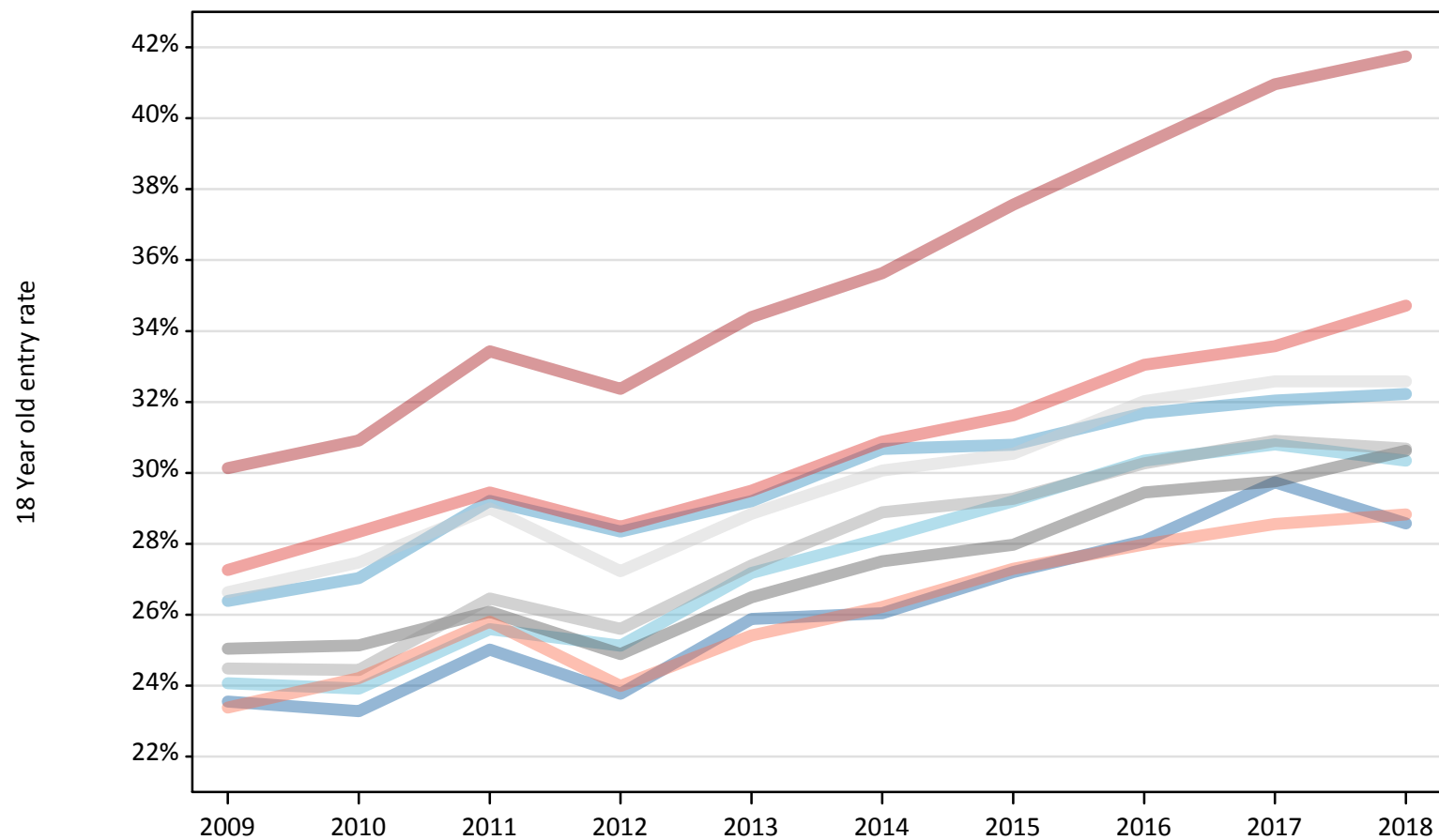
Placed 18 year old applicants: absolute change relative to 2017 cycle totals

Applicant Status	Domicile	2009	2010	2011	2012	2013	2014	2015	2016	2017	2018
Placed	North East	-580	-640	-520	-1,080	-580	-700	-220	-230	0	-570
	North West	-1,190	-990	-270	-1,510	-1,310	-470	380	10	0	-660
	Yorkshire and The Humber	-2,590	-2,810	-2,190	-2,620	-1,890	-1,080	-400	-70	0	-920
	East Midlands	-1,600	-1,810	-1,560	-2,060	-1,430	-1,180	-700	-240	0	-210
	West Midlands	-2,620	-2,950	-2,230	-2,590	-1,660	-890	-30	150	0	-490
	East of England	-3,230	-2,950	-2,050	-2,850	-2,030	-1,470	-810	-120	0	-590
	London	-10,680	-10,130	-8,040	-8,630	-6,560	-5,290	-2,820	-1,500	0	890
	South East	-5,760	-4,800	-4,260	-4,730	-4,110	-3,260	-1,590	-350	0	240
	South West	-2,210	-1,940	-1,120	-2,110	-1,600	-1,300	-170	-270	0	-330
	(England total)	-30,450	-29,020	-22,240	-28,180	-21,160	-15,640	-6,350	-2,620	0	-2,640
	Scotland	-250	-20	-720	-630	-540	-330	-230	20	0	-30
	Northern Ireland	740	330	130	-350	200	0	-100	130	0	-450
	Wales	10	-490	-870	-540	-620	-240	190	340	0	-160
	UK	-29,960	-29,200	-23,700	-29,700	-22,120	-16,210	-6,490	-2,140	0	-3,270

R.9 Placed 18 year old applicants by region of domicile: 8 days after A level results day

Placed 18 year old applicants: entry rate

- North East
- North West
- Yorkshire and The Humber
- East Midlands
- West Midlands
- East of England
- London
- South East
- South West



R.10 Placed 18 year old applicants by region of domicile: 8 days after A level results day

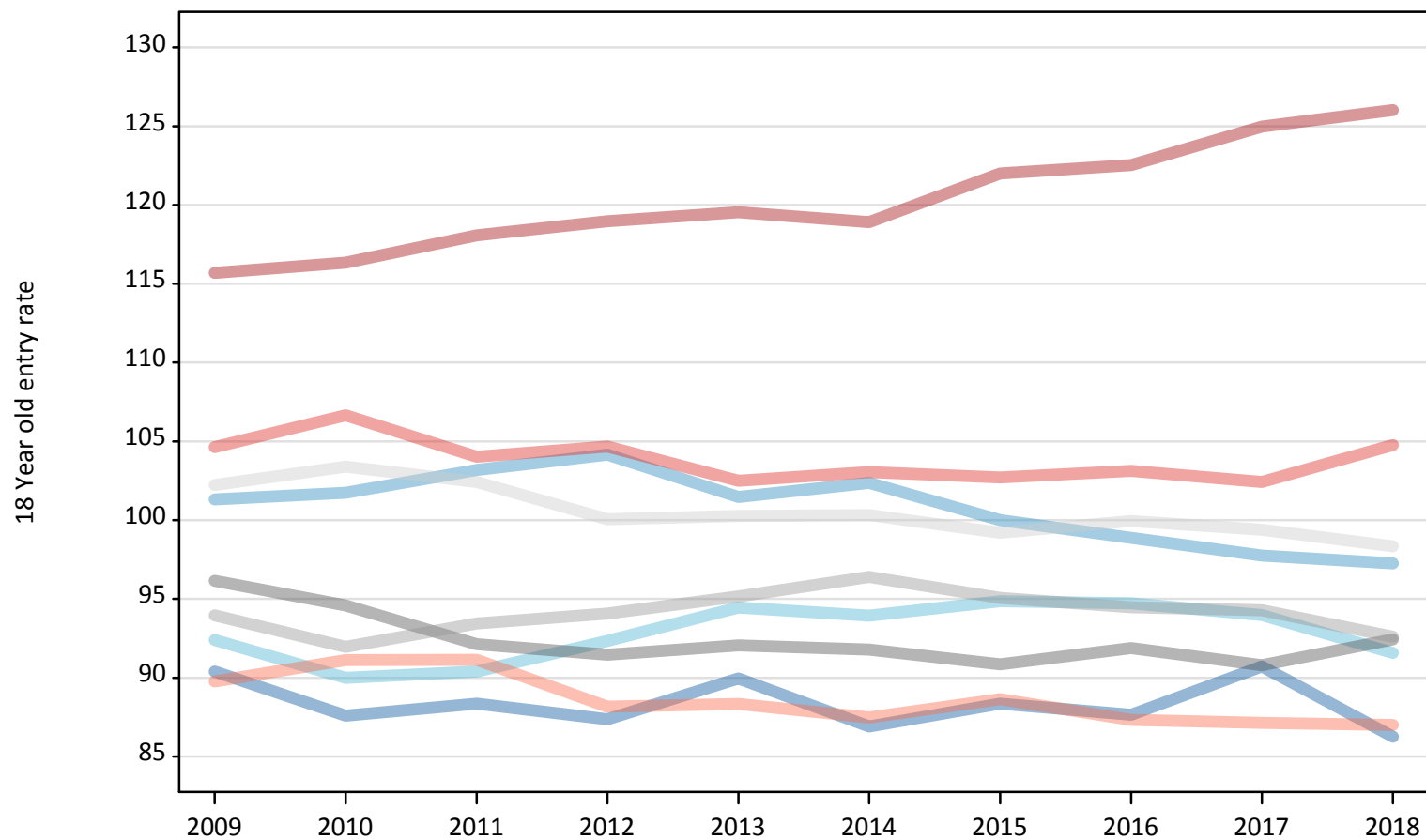
Placed 18 year old applicants: entry rate

Applicant Status	Domicile	2009	2010	2011	2012	2013	2014	2015	2016	2017	2018
Placed	North East	23.5%	23.3%	25.0%	23.8%	25.9%	26.0%	27.2%	28.1%	29.7%	28.6%
	North West	26.4%	27.0%	29.2%	28.3%	29.2%	30.7%	30.8%	31.7%	32.0%	32.2%
	Yorkshire and The Humber	24.1%	23.9%	25.6%	25.1%	27.2%	28.2%	29.2%	30.3%	30.8%	30.3%
	East Midlands	25.0%	25.1%	26.1%	24.9%	26.5%	27.5%	28.0%	29.4%	29.8%	30.6%
	West Midlands	24.5%	24.4%	26.5%	25.6%	27.4%	28.9%	29.3%	30.3%	30.9%	30.7%
	East of England	26.6%	27.5%	29.0%	27.2%	28.8%	30.1%	30.5%	32.0%	32.6%	32.6%
	London	30.1%	30.9%	33.4%	32.4%	34.4%	35.6%	37.6%	39.3%	41.0%	41.8%
	South East	27.3%	28.3%	29.4%	28.5%	29.5%	30.9%	31.6%	33.0%	33.6%	34.7%
	South West	23.4%	24.2%	25.8%	24.0%	25.4%	26.2%	27.3%	28.0%	28.6%	28.8%
	(England total)	26.0%	26.6%	28.3%	27.2%	28.8%	30.0%	30.8%	32.0%	32.8%	33.1%
	Scotland	22.2%	22.9%	22.1%	22.6%	22.9%	23.3%	23.9%	24.9%	25.5%	26.3%
	Northern Ireland	34.9%	34.0%	33.9%	31.8%	34.8%	34.4%	33.2%	34.6%	34.5%	34.0%
	Wales	25.3%	24.3%	24.2%	25.0%	25.3%	26.5%	27.6%	29.0%	28.7%	29.2%
	UK	26.0%	26.4%	27.8%	26.9%	28.3%	29.4%	30.2%	31.4%	32.1%	32.4%

R.11 Placed 18 year old applicants by region of domicile: 8 days after A level results day

Placed 18 year old applicants: entry rates (indexed to 100 = England)

- North East
- North West
- Yorkshire and The Humber
- East Midlands
- West Midlands
- East of England
- London
- South East
- South West



R.12 Placed 18 year old applicants by region of domicile: 8 days after A level results day

Placed 18 year old applicants: entry rate (indexed to 100 = England)

Applicant Status	Domicile	2009	2010	2011	2012	2013	2014	2015	2016	2017	2018
Placed	North East	90	88	88	87	90	87	88	88	91	86
	North West	101	102	103	104	101	102	100	99	98	97
	Yorkshire and The Humber	92	90	90	92	94	94	95	95	94	92
	East Midlands	96	95	92	91	92	92	91	92	91	92
	West Midlands	94	92	93	94	95	96	95	94	94	93
	East of England	102	103	102	100	100	100	99	100	99	98
	London	116	116	118	119	120	119	122	123	125	126
	South East	105	107	104	105	103	103	103	103	102	105
	South West	90	91	91	88	88	87	89	87	87	87
	(England total)	100	100	100	100	100	100	100	100	100	100