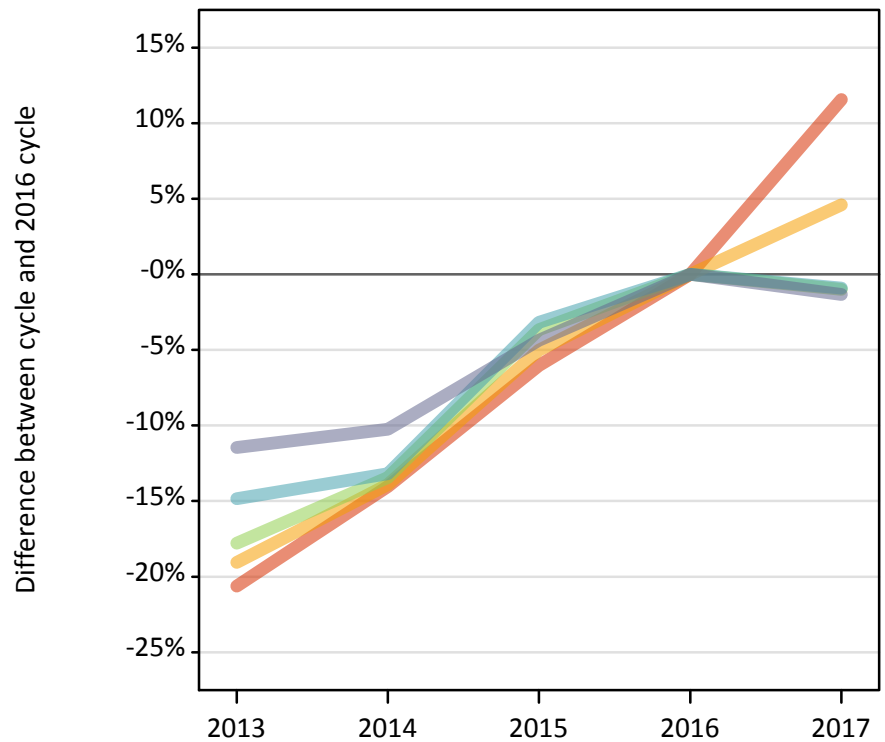


Analysis at 00:05 on Thursday 17 August 2017 (A level results day)

J.1 Placed applicants from Scotland by SIMD16 quintile: A level results day

Placed applicants: change relative to 2016 cycle totals

- Quintile 1
- Quintile 2
- Quintile 3
- Quintile 4
- Quintile 5



J.2 Placed applicants from Scotland by SIMD16 quintile: A level results day

Applicant Status	SIMD16	2013	2014	2015	2016	2017
Placed	Quintile 1	3,300	3,580	3,910	4,160	4,640
	Quintile 2	3,940	4,190	4,630	4,870	5,090
	Quintile 3	4,890	5,150	5,740	5,950	5,890
	Quintile 4	6,260	6,380	7,120	7,350	7,290
	Quintile 5	8,420	8,540	9,100	9,510	9,380

J.3 Placed applicants from Scotland by SIMD16 quintile: A level results day

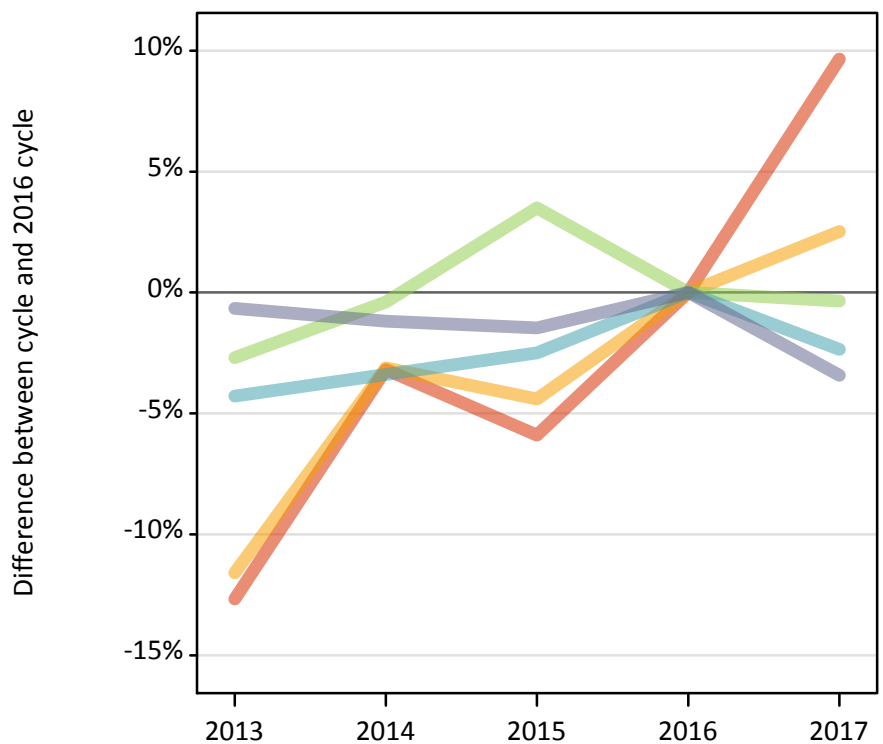
Placed applicants: change relative to 2016 cycle totals

Applicant Status	SIMD16	2013	2014	2015	2016	2017
Placed	Quintile 1	-21%	-14%	-6%	0%	12%
	Quintile 2	-19%	-14%	-5%	0%	5%
	Quintile 3	-18%	-13%	-4%	0%	-1%
	Quintile 4	-15%	-13%	-3%	0%	-1%
	Quintile 5	-11%	-10%	-4%	0%	-1%

J.4 Placed 18 year old applicants from Scotland by SIMD16 quintile: A level results day

Placed 18 year old applicants: change relative to 2016 cycle totals

- Quintile 1
- Quintile 2
- Quintile 3
- Quintile 4
- Quintile 5



J.5 Placed 18 year old applicants from Scotland by SIMD16 quintile: A level results day

Applicant Status	SIMD16	2013	2014	2015	2016	2017
Placed	Quintile 1	1,100	1,210	1,180	1,250	1,380
	Quintile 2	1,650	1,810	1,780	1,860	1,910
	Quintile 3	2,450	2,510	2,610	2,520	2,510
	Quintile 4	3,420	3,450	3,480	3,570	3,480
	Quintile 5	5,110	5,080	5,070	5,140	4,970

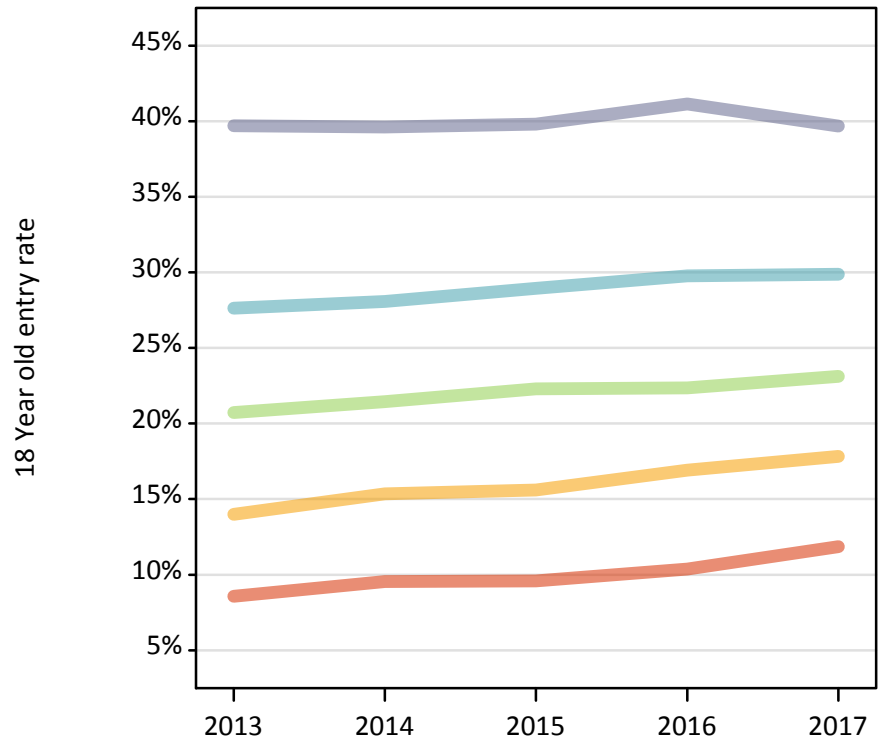
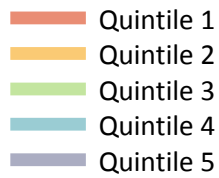
J.6 Placed 18 year old applicants from Scotland by SIMD16 quintile: A level results day

Placed 18 year old applicants: change relative to 2016 cycle totals

Applicant Status	SIMD16	2013	2014	2015	2016	2017
Placed	Quintile 1	-13%	-3%	-6%	0%	10%
	Quintile 2	-12%	-3%	-4%	0%	3%
	Quintile 3	-3%	-0%	3%	0%	-0%
	Quintile 4	-4%	-3%	-2%	0%	-2%
	Quintile 5	-1%	-1%	-1%	0%	-3%

J.7 Placed 18 year old applicants from Scotland by SIMD16 quintile: A level results day

Placed 18 year old applicants: entry rate



J.8 Placed 18 year old applicants from Scotland by SIMD16 quintile: A level results day

Placed 18 year old applicants: entry rate

Applicant Status	SIMD16	2013	2014	2015	2016	2017
Placed	Quintile 1	8.6%	9.6%	9.6%	10.4%	11.9%
	Quintile 2	14.0%	15.3%	15.6%	16.9%	17.8%
	Quintile 3	20.7%	21.4%	22.3%	22.4%	23.1%
	Quintile 4	27.6%	28.1%	28.9%	29.8%	29.9%
	Quintile 5	39.7%	39.6%	39.8%	41.1%	39.7%

J.9 Placed 18 year old applicants from Scotland by SIMD16 quintile: A level results day

Placed 18 year old applicants: entry rate (indexed to 100 = Quintile 1)

Applicant Status	SIMD16	2013	2014	2015	2016	2017
Placed	Quintile 1	100	100	100	100	100
	Quintile 2	163	161	163	163	150
	Quintile 3	242	224	233	215	195
	Quintile 4	322	294	302	287	252
	Quintile 5	463	415	416	396	334