

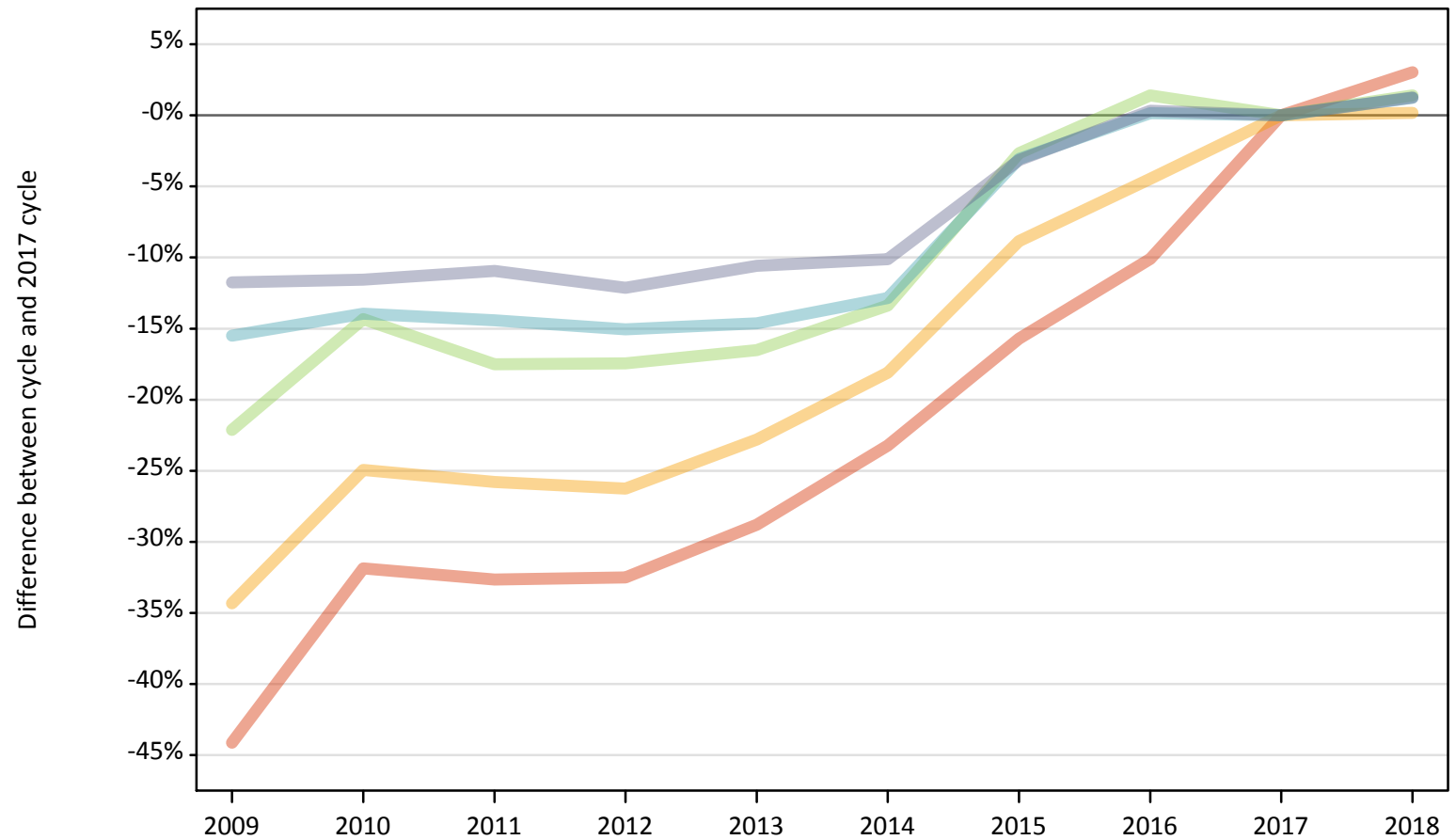
Daily Clearing Analysis: SIMD16

Analysis at 00:05 on Wednesday 22 August 2018 (6 days after A level results day)

J.1 Placed applicants from Scotland by SIMD16 quintile: 6 days after A level results day

Placed applicants: change relative to 2017 cycle totals

- Quintile 1
- Quintile 2
- Quintile 3
- Quintile 4
- Quintile 5



Note: The percentage change is not plotted in the above chart for groups with fewer than 30 placed applicants in any one cycle.

J.2 Placed applicants from Scotland by SIMD16 quintile: 6 days after A level results day

Applicant Status	SIMD16	2009	2010	2011	2012	2013	2014	2015	2016	2017	2018
Placed	Quintile 1	2,700	3,290	3,250	3,260	3,440	3,710	4,070	4,340	4,830	4,970
	Quintile 2	3,460	3,960	3,910	3,890	4,070	4,320	4,810	5,040	5,270	5,280
	Quintile 3	4,740	5,220	5,020	5,030	5,090	5,280	5,930	6,180	6,090	6,180
	Quintile 4	6,390	6,500	6,470	6,420	6,450	6,590	7,330	7,570	7,560	7,650
	Quintile 5	8,540	8,560	8,620	8,500	8,650	8,700	9,370	9,710	9,670	9,800

J.3 Placed applicants from Scotland by SIMD16 quintile: 6 days after A level results day

Placed applicants: change relative to 2017 cycle totals

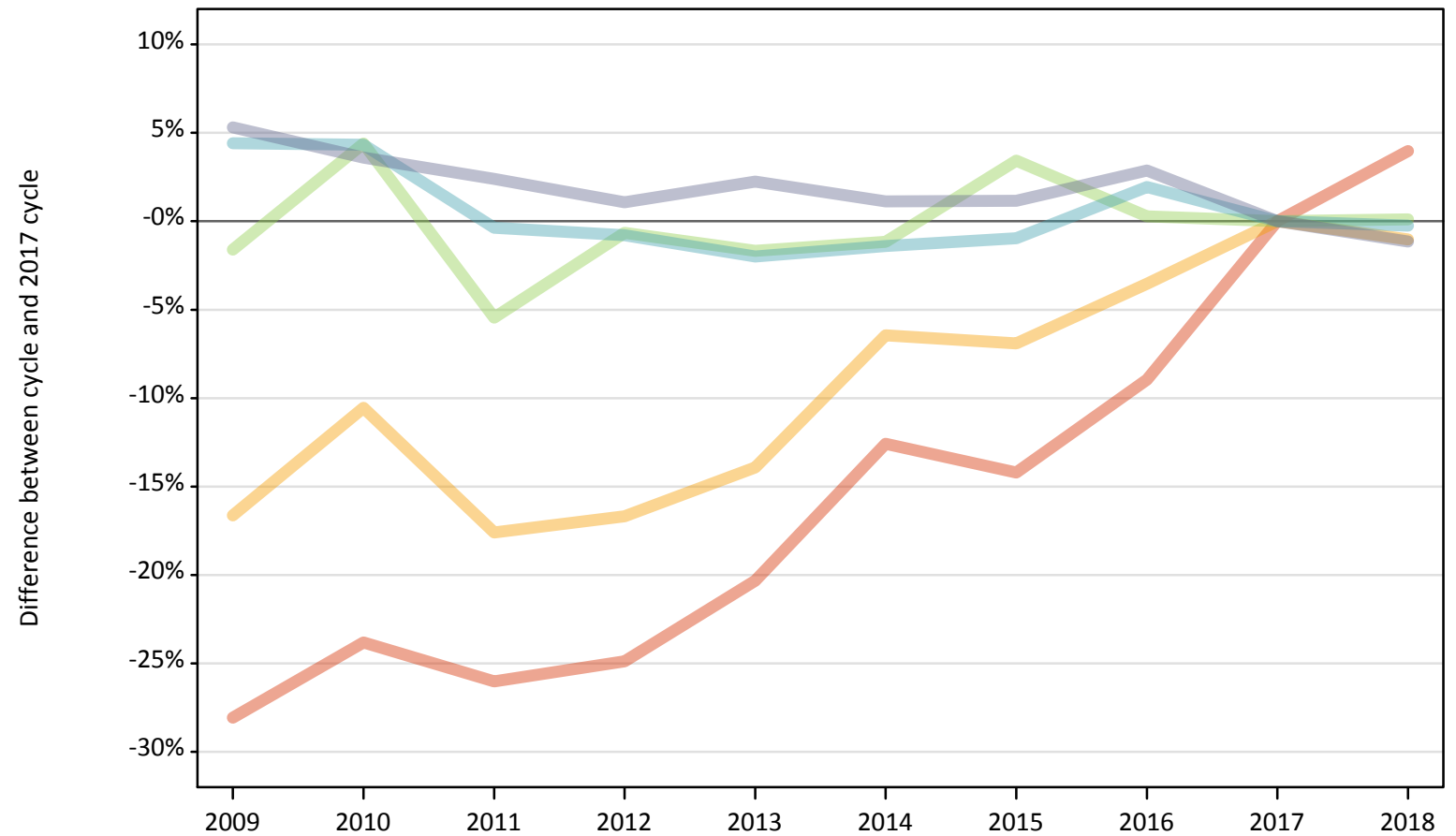
Applicant Status	SIMD16	2009	2010	2011	2012	2013	2014	2015	2016	2017	2018
Placed	Quintile 1	-44%	-32%	-33%	-33%	-29%	-23%	-16%	-10%	0%	3%
	Quintile 2	-34%	-25%	-26%	-26%	-23%	-18%	-9%	-4%	0%	0%
	Quintile 3	-22%	-14%	-18%	-17%	-17%	-13%	-3%	1%	0%	1%
	Quintile 4	-16%	-14%	-14%	-15%	-15%	-13%	-3%	0%	0%	1%
	Quintile 5	-12%	-12%	-11%	-12%	-11%	-10%	-3%	0%	0%	1%

Note: The percentage change is not recorded in the above table for groups with fewer than 10 placed applicants in that cycle or in the 2017 cycle.

J.4 Placed 18 year old applicants from Scotland by SIMD16 quintile: 6 days after A level results day

Placed 18 year old applicants: change relative to 2017 cycle totals

- Quintile 1
- Quintile 2
- Quintile 3
- Quintile 4
- Quintile 5



Note: The percentage change is not plotted in the above chart for groups with fewer than 30 placed applicants in any one cycle.

J.5 Placed 18 year old applicants from Scotland by SIMD16 quintile: 6 days after A level results day

Applicant Status	SIMD16	2009	2010	2011	2012	2013	2014	2015	2016	2017	2018
Placed	Quintile 1	1,010	1,070	1,040	1,060	1,120	1,230	1,210	1,280	1,410	1,460
	Quintile 2	1,630	1,750	1,610	1,630	1,680	1,830	1,820	1,890	1,950	1,930
	Quintile 3	2,530	2,680	2,430	2,550	2,530	2,540	2,660	2,580	2,570	2,570
	Quintile 4	3,720	3,710	3,550	3,530	3,490	3,510	3,520	3,630	3,560	3,550
	Quintile 5	5,350	5,270	5,210	5,140	5,200	5,140	5,140	5,230	5,080	5,030

J.6 Placed 18 year old applicants from Scotland by SIMD16 quintile: 6 days after A level results day

Placed 18 year old applicants: change relative to 2017 cycle totals

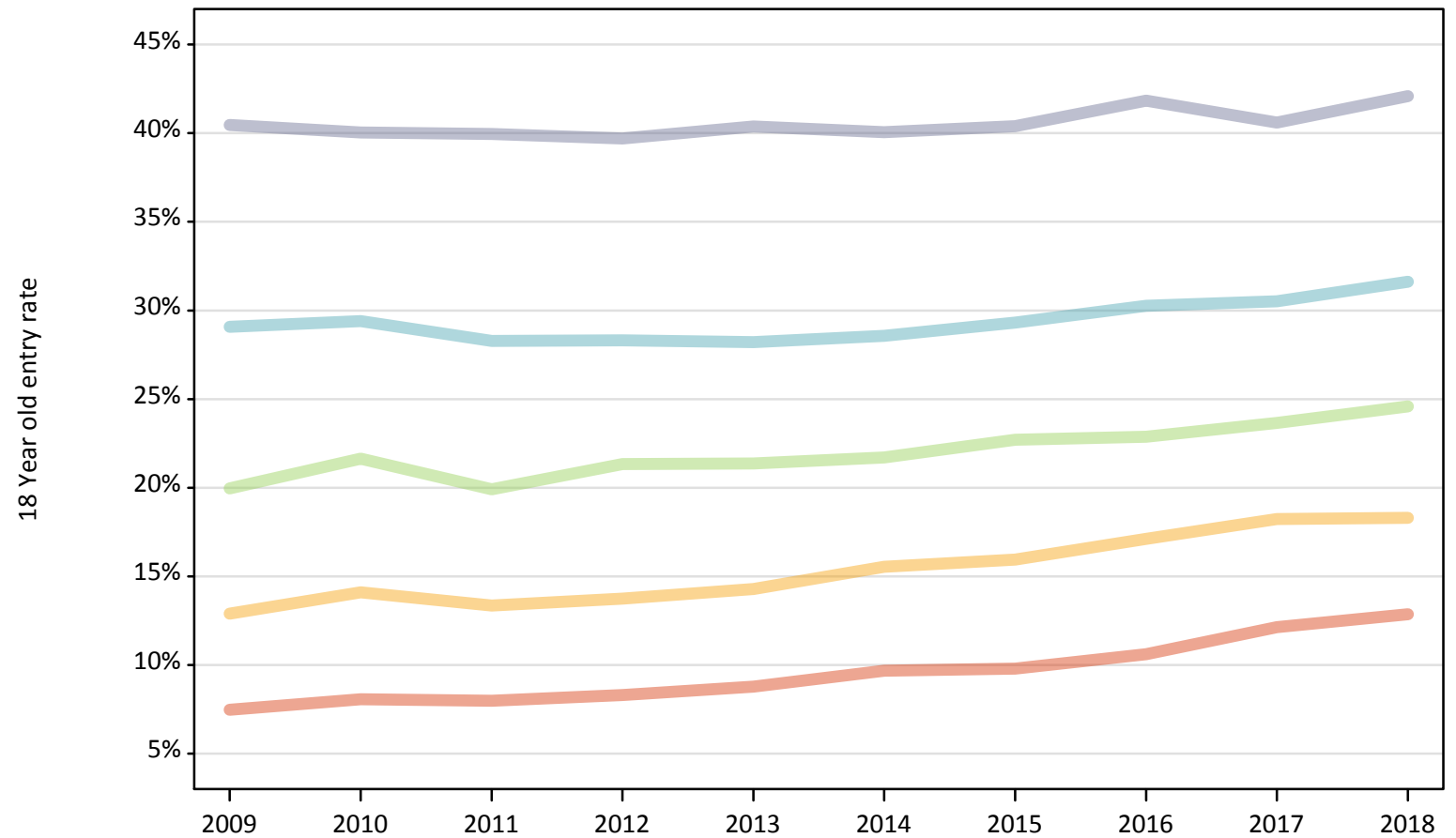
Applicant Status	SIMD16	2009	2010	2011	2012	2013	2014	2015	2016	2017	2018
Placed	Quintile 1	-28%	-24%	-26%	-25%	-20%	-13%	-14%	-9%	0%	4%
	Quintile 2	-17%	-11%	-18%	-17%	-14%	-6%	-7%	-4%	0%	-1%
	Quintile 3	-2%	4%	-5%	-1%	-2%	-1%	3%	0%	0%	0%
	Quintile 4	4%	4%	-0%	-1%	-2%	-1%	-1%	2%	0%	-0%
	Quintile 5	5%	4%	2%	1%	2%	1%	1%	3%	0%	-1%

Note: The percentage change is not recorded in the above table for groups with fewer than 10 placed applicants in that cycle or in the 2017 cycle.

J.7 Placed 18 year old applicants from Scotland by SIMD16 quintile: 6 days after A level results day

Placed 18 year old applicants: entry rate

- Quintile 1
- Quintile 2
- Quintile 3
- Quintile 4
- Quintile 5



J.8 Placed 18 year old applicants from Scotland by SIMD16 quintile: 6 days after A level results day

Placed 18 year old applicants: entry rate

Applicant Status	SIMD16	2009	2010	2011	2012	2013	2014	2015	2016	2017	2018
Placed	Quintile 1	7.5%	8.1%	8.0%	8.3%	8.8%	9.7%	9.8%	10.6%	12.1%	12.9%
	Quintile 2	12.9%	14.1%	13.3%	13.7%	14.3%	15.5%	15.9%	17.1%	18.2%	18.3%
	Quintile 3	20.0%	21.6%	19.9%	21.3%	21.4%	21.7%	22.7%	22.9%	23.7%	24.6%
	Quintile 4	29.1%	29.4%	28.3%	28.3%	28.2%	28.6%	29.3%	30.3%	30.5%	31.6%
	Quintile 5	40.5%	40.0%	40.0%	39.7%	40.4%	40.1%	40.4%	41.8%	40.6%	42.1%

J.9 Placed 18 year old applicants from Scotland by SIMD16 quintile: 6 days after A level results day

Placed 18 year old applicants: entry rate (indexed to 100 = Quintile 1)

Applicant Status	SIMD16	2009	2010	2011	2012	2013	2014	2015	2016	2017	2018
Placed	Quintile 1	100	100	100	100	100	100	100	100	100	100
	Quintile 2	173	175	167	166	163	160	163	161	150	142
	Quintile 3	267	268	249	257	243	224	232	216	195	191
	Quintile 4	389	365	354	341	321	295	299	285	251	246
	Quintile 5	542	497	500	478	460	414	412	394	334	327