

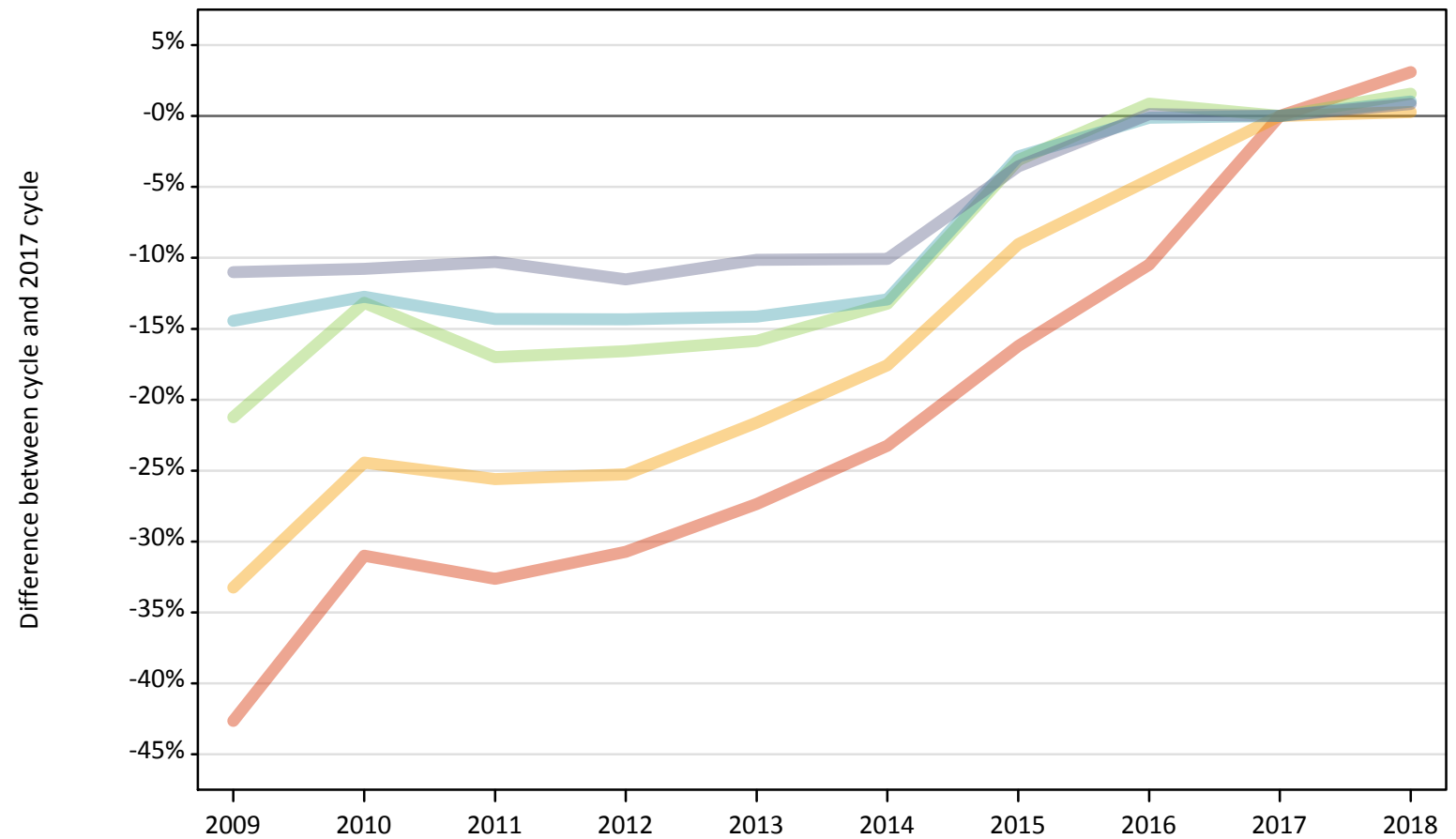
Daily Clearing Analysis: SIMD16

Analysis at 00:05 on Wednesday 29 August 2018 (13 days after A level results day)

J.1 Placed applicants from Scotland by SIMD16 quintile: 13 days after A level results day

Placed applicants: change relative to 2017 cycle totals

- Quintile 1
- Quintile 2
- Quintile 3
- Quintile 4
- Quintile 5



Note: The percentage change is not plotted in the above chart for groups with fewer than 30 placed applicants in any one cycle.

J.2 Placed applicants from Scotland by SIMD16 quintile: 13 days after A level results day

Applicant Status	SIMD16	2009	2010	2011	2012	2013	2014	2015	2016	2017	2018
Placed	Quintile 1	2,840	3,420	3,340	3,430	3,600	3,800	4,150	4,430	4,950	5,110
	Quintile 2	3,600	4,070	4,010	4,030	4,220	4,440	4,900	5,150	5,390	5,400
	Quintile 3	4,880	5,380	5,140	5,170	5,220	5,380	6,010	6,250	6,200	6,300
	Quintile 4	6,560	6,690	6,570	6,570	6,580	6,680	7,450	7,660	7,670	7,750
	Quintile 5	8,720	8,740	8,790	8,670	8,810	8,810	9,450	9,810	9,800	9,880

J.3 Placed applicants from Scotland by SIMD16 quintile: 13 days after A level results day

Placed applicants: change relative to 2017 cycle totals

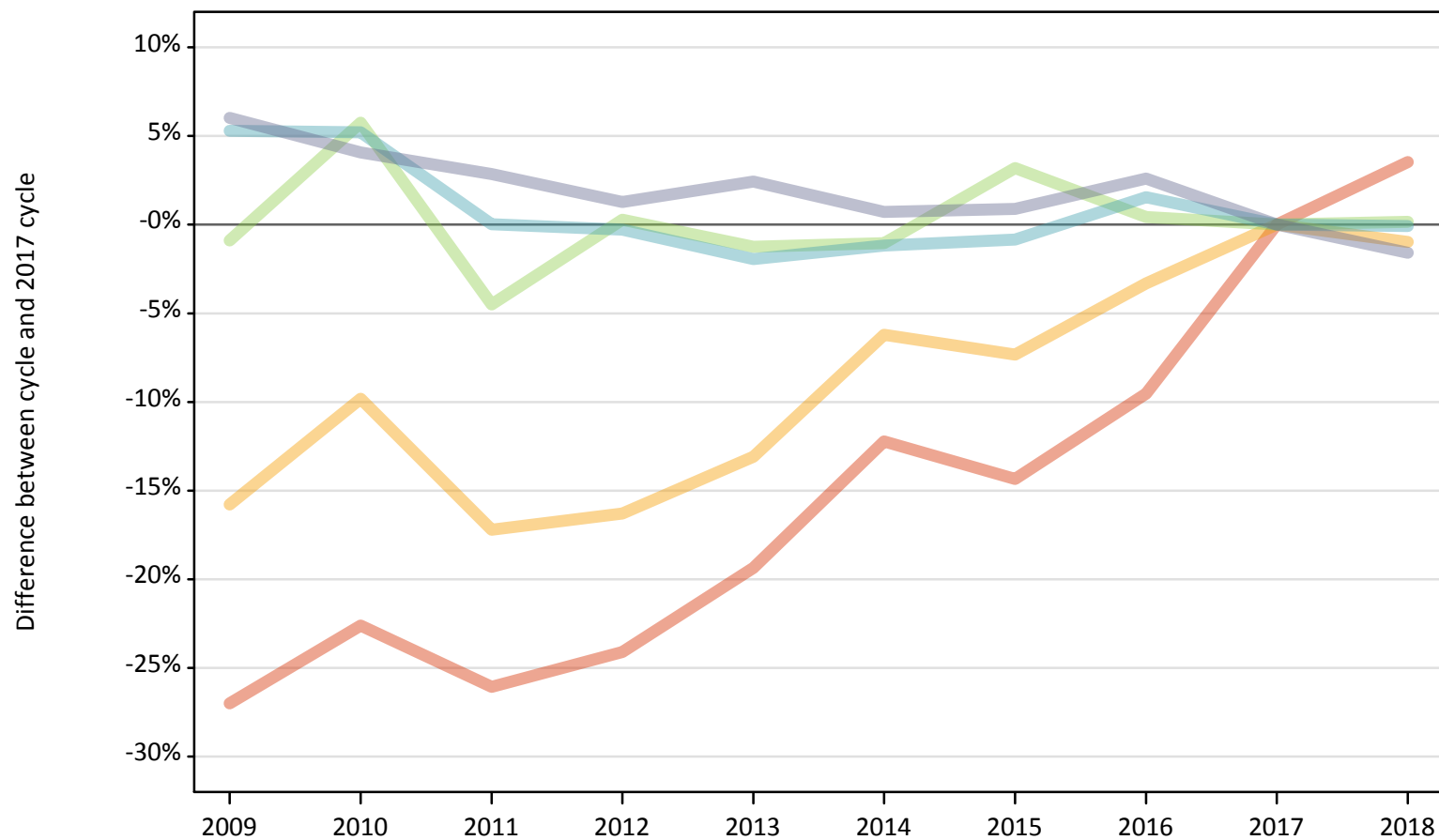
Applicant Status	SIMD16	2009	2010	2011	2012	2013	2014	2015	2016	2017	2018
Placed	Quintile 1	-43%	-31%	-33%	-31%	-27%	-23%	-16%	-10%	0%	3%
	Quintile 2	-33%	-24%	-26%	-25%	-22%	-18%	-9%	-5%	0%	0%
	Quintile 3	-21%	-13%	-17%	-17%	-16%	-13%	-3%	1%	0%	2%
	Quintile 4	-14%	-13%	-14%	-14%	-14%	-13%	-3%	-0%	0%	1%
	Quintile 5	-11%	-11%	-10%	-12%	-10%	-10%	-4%	0%	0%	1%

Note: The percentage change is not recorded in the above table for groups with fewer than 10 placed applicants in that cycle or in the 2017 cycle.

J.4 Placed 18 year old applicants from Scotland by SIMD16 quintile: 13 days after A level results day

Placed 18 year old applicants: change relative to 2017 cycle totals

- Quintile 1
- Quintile 2
- Quintile 3
- Quintile 4
- Quintile 5



Note: The percentage change is not plotted in the above chart for groups with fewer than 30 placed applicants in any one cycle.

J.5 Placed 18 year old applicants from Scotland by SIMD16 quintile: 13 days after A level results day

Applicant Status	SIMD16	2009	2010	2011	2012	2013	2014	2015	2016	2017	2018
Placed	Quintile 1	1,030	1,100	1,050	1,070	1,140	1,240	1,210	1,280	1,420	1,470
	Quintile 2	1,650	1,770	1,630	1,640	1,710	1,840	1,820	1,900	1,960	1,950
	Quintile 3	2,550	2,720	2,460	2,580	2,540	2,550	2,660	2,590	2,570	2,580
	Quintile 4	3,760	3,750	3,570	3,560	3,500	3,520	3,540	3,620	3,570	3,560
	Quintile 5	5,410	5,310	5,250	5,170	5,230	5,140	5,150	5,240	5,100	5,020

J.6 Placed 18 year old applicants from Scotland by SIMD16 quintile: 13 days after A level results day

Placed 18 year old applicants: change relative to 2017 cycle totals

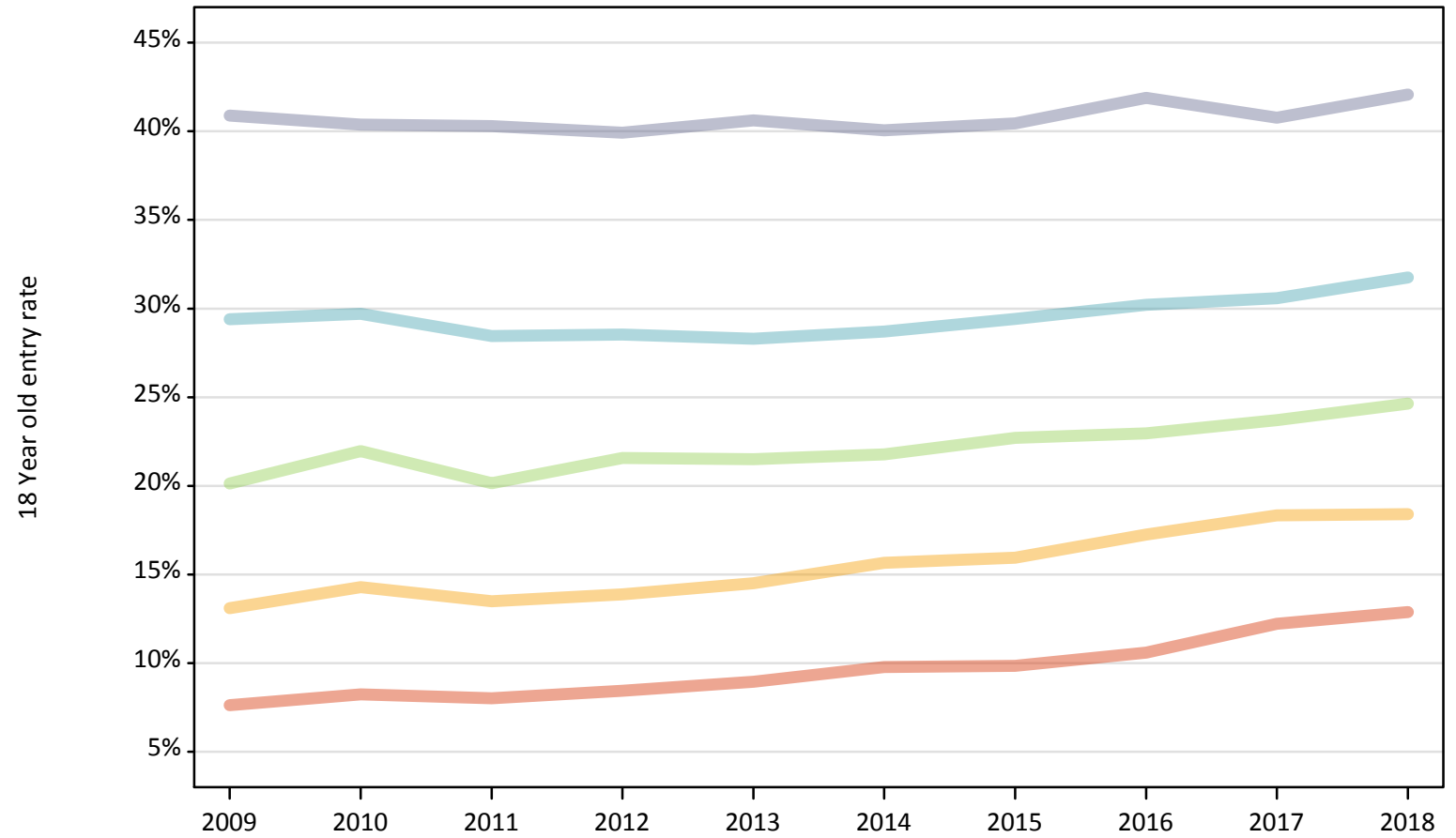
Applicant Status	SIMD16	2009	2010	2011	2012	2013	2014	2015	2016	2017	2018
Placed	Quintile 1	-27%	-23%	-26%	-24%	-19%	-12%	-14%	-10%	0%	4%
	Quintile 2	-16%	-10%	-17%	-16%	-13%	-6%	-7%	-3%	0%	-1%
	Quintile 3	-1%	6%	-5%	0%	-1%	-1%	3%	0%	0%	0%
	Quintile 4	5%	5%	0%	-0%	-2%	-1%	-1%	2%	0%	-0%
	Quintile 5	6%	4%	3%	1%	2%	1%	1%	3%	0%	-2%

Note: The percentage change is not recorded in the above table for groups with fewer than 10 placed applicants in that cycle or in the 2017 cycle.

J.7 Placed 18 year old applicants from Scotland by SIMD16 quintile: 13 days after A level results day

Placed 18 year old applicants: entry rate

- Quintile 1
- Quintile 2
- Quintile 3
- Quintile 4
- Quintile 5



J.8 Placed 18 year old applicants from Scotland by SIMD16 quintile: 13 days after A level results day

Placed 18 year old applicants: entry rate

Applicant Status	SIMD16	2009	2010	2011	2012	2013	2014	2015	2016	2017	2018
Placed	Quintile 1	7.6%	8.2%	8.0%	8.4%	8.9%	9.8%	9.8%	10.6%	12.2%	12.9%
	Quintile 2	13.1%	14.3%	13.5%	13.9%	14.5%	15.7%	16.0%	17.2%	18.3%	18.4%
	Quintile 3	20.1%	22.0%	20.2%	21.6%	21.5%	21.8%	22.7%	23.0%	23.7%	24.6%
	Quintile 4	29.4%	29.7%	28.5%	28.5%	28.3%	28.7%	29.4%	30.2%	30.6%	31.7%
	Quintile 5	40.9%	40.4%	40.3%	39.9%	40.6%	40.1%	40.4%	41.9%	40.8%	42.1%

J.9 Placed 18 year old applicants from Scotland by SIMD16 quintile: 13 days after A level results day

Placed 18 year old applicants: entry rate (indexed to 100 = Quintile 1)

Applicant Status	SIMD16	2009	2010	2011	2012	2013	2014	2015	2016	2017	2018
Placed	Quintile 1	100	100	100	100	100	100	100	100	100	100
	Quintile 2	172	173	168	165	162	160	162	163	150	143
	Quintile 3	264	267	251	256	241	223	231	217	194	191
	Quintile 4	386	361	355	338	316	294	299	285	250	247
	Quintile 5	536	490	502	473	454	410	411	395	334	327