

M40 The Manchester Metropolitan University

Cycle years: 2011 - 2016

Cycle Reference Point: End of Cycle

Applicant coverage: UK domiciled

Reporting groups: Sex, POLAR3, ethnic group

Applicant statistics: June deadline applicants, placed June deadline applicants, all placed applicants, June deadline applicants per 10,000 population, placed June deadline applicants per 10,000 population, all placed applicants per 10,000 population

Application statistics: June deadline applications, offers, offer rate, average offer rate, percentage point difference between offer rate and average offer rate, contribution of group to the average offer rate

Non-disclosure controls: To avoid the disclosure of information about any individual the following measures are taken

- Applicants, placed applicants, applications and offers are rounded to the nearest 5.
- Applicants/placed applicants per 10,000 population figures are reported as 0 if the applicant/placed applicant figures are rounded to 0.
- All statistics related to the offer rate are not reported when the number of applications for a group is less than 10. The percentage point difference between the offer rate and the average offer rate is not reported when the number of applications for a group is less than 50.
- Offer rates are reported as 0% if there are fewer than 5 offers, and 100% if the number of offers is within 5 of the number of applications. When the offer rate is reported as 0% or 100%, it is reported in italics.

Contents:

18 year old applicants: P.1
18 year old applications: P.2
18 year old applicants by sex: P.3
18 year old applications by sex: P.4
18 year old applicants by POLAR3 quintile: P.7
18 year old applications by POLAR3 quintile: P.8
18 year old applicants by ethnic group: P.11
18 year old applications by ethnic group: P.12
Applicants (all ages): P.15
Applications (all ages): P.16
Applicants (all ages) by sex: P.17
Applications (all ages) by sex: P.18
Applicants (all ages) by POLAR3 quintile: P.19
Applications (all ages) by POLAR3 quintile: P.20
Applicants (all ages) by ethnic group: P.21
Applications (all ages) by ethnic group: P.22

P.1 18 year old applicants

Statistic	2011	2012	2013	2014	2015	2016
June deadline applicants	23,860	21,280	22,145	24,780	25,045	24,825
Placed June deadline applicants	3,635	2,980	3,560	3,420	3,990	3,670
All placed applicants	4,375	3,620	4,025	3,880	4,465	4,105
June deadline applicants per 10,000 population	309.8	275.1	291.0	329.0	326.9	331.2
Placed June deadline applicants per 10,000	47.2	38.6	46.8	45.4	52.1	48.9
All placed applicants per 10,000 population	56.8	46.8	52.9	51.5	58.3	54.7

P.2 18 year old applications

Statistic	2011	2012	2013	2014	2015	2016
June deadline applications	26,595	23,385	24,520	27,650	27,770	27,505
Offers	18,545	15,735	20,295	22,365	22,615	22,175
Offer rate	69.7%	67.3%	82.8%	80.9%	81.4%	80.6%

P.3 18 year old applicants by sex

Statistic	Sex	2011	2012	2013	2014	2015	2016
June deadline applicants	Men	9,815	8,665	9,085	10,165	10,130	10,025
	Women	14,045	12,615	13,055	14,615	14,910	14,800
Placed June deadline applicants	Men	1,565	1,245	1,485	1,330	1,705	1,500
	Women	2,065	1,740	2,075	2,085	2,280	2,170
All placed applicants	Men	1,880	1,500	1,645	1,490	1,895	1,640
	Women	2,495	2,115	2,380	2,390	2,570	2,465
June deadline applicants per 10,000 population	Men	249.4	218.5	232.7	262.6	258.2	260.9
	Women	373.0	334.7	352.4	399.3	399.0	405.1
Placed June deadline applicants per 10,000 population	Men	39.8	31.4	38.0	34.4	43.5	39.0
	Women	54.9	46.1	56.0	57.0	61.0	59.4
All placed applicants per 10,000 population	Men	47.8	37.9	42.2	38.5	48.3	42.7
	Women	66.2	56.2	64.2	65.3	68.8	67.4

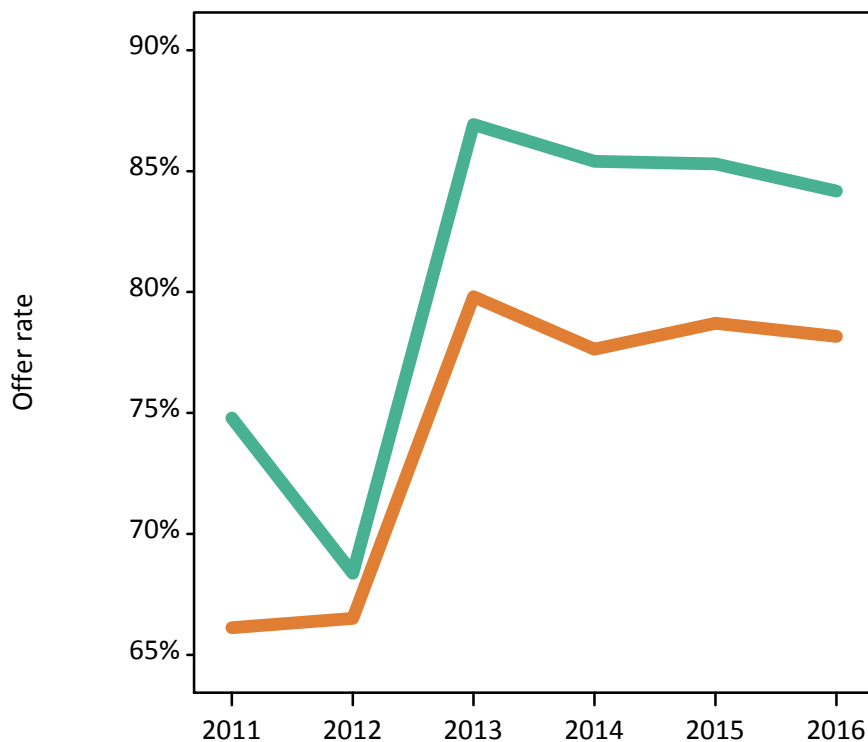
P.4 18 year old applications by sex

Statistic	Sex	2011	2012	2013	2014	2015	2016
June deadline applications	Men	11,055	9,705	10,260	11,570	11,450	11,240
	Women	15,535	13,680	14,260	16,080	16,325	16,265
Offers	Men	8,270	6,635	8,920	9,880	9,765	9,465
	Women	10,275	9,100	11,380	12,485	12,850	12,715
Offer rate	Men	74.8%	68.4%	86.9%	85.4%	85.3%	84.2%
	Women	66.1%	66.5%	79.8%	77.6%	78.7%	78.2%
Average offer rate	Men	75.4%	69.1%	87.3%	85.9%	86.1%	84.9%
	Women	65.7%	66.0%	79.5%	77.3%	78.2%	77.6%
Percentage point difference between offer rate and average offer rate	Men	-0.6	-0.8	-0.4	-0.5	-0.8	-0.8
	Women	0.4	0.5	0.3	0.3	0.5	0.5
Contribution of group to the average offer rate	Men	0.571	0.570	0.578	0.588	0.574	0.569
	Women	0.695	0.695	0.696	0.704	0.701	0.702

P.5 18 year old offer rate by sex

Note: The line for a group is not plotted when that group made fewer than 10 applications in any of the years from 2011-2016.

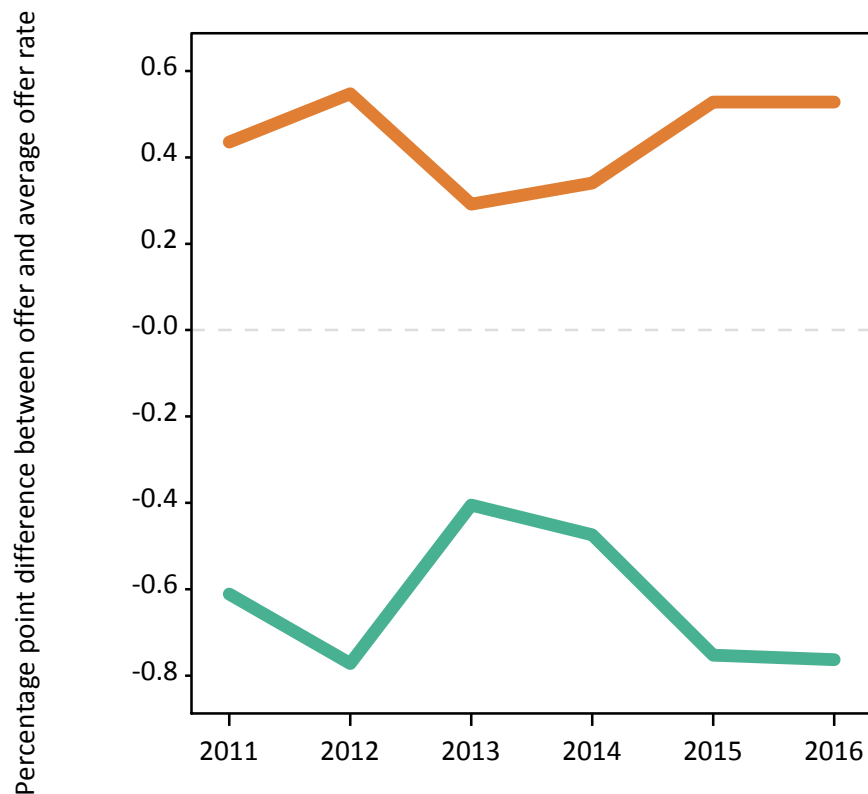
Men
Women



P.6 Percentage point difference between 18 year old offer rate and average offer rate by sex

Note: The line for a group is not plotted when that group made fewer than 50 applications in any of the years from 2011-2016.

Men
Women



P.7 18 year old applicants by POLAR3 quintile

Statistic	POLAR3 quintile	2011	2012	2013	2014	2015	2016
June deadline applicants	Quintile 1	3,520	3,240	3,400	4,035	4,120	4,115
	Quintile 2	4,370	4,050	4,335	4,850	4,935	4,850
	Quintile 3	4,860	4,330	4,565	5,145	5,210	5,120
	Quintile 4	5,175	4,605	4,765	5,195	5,390	5,155
	Quintile 5	5,900	5,015	5,040	5,500	5,335	5,480
Placed June deadline applicants	Quintile 1	540	480	580	600	665	575
	Quintile 2	660	620	750	665	810	700
	Quintile 3	770	575	735	745	890	840
	Quintile 4	775	625	785	690	835	765
	Quintile 5	880	675	705	705	775	765
All placed applicants	Quintile 1	630	570	655	660	740	655
	Quintile 2	780	735	835	755	900	790
	Quintile 3	895	720	820	850	1,000	935
	Quintile 4	945	765	880	780	925	840
	Quintile 5	1,115	825	825	820	885	855
June deadline applicants per 10,000 population	Quintile 1	244.9	227.6	244.1	290.1	294.2	304.6
	Quintile 2	290.5	270.1	294.1	331.4	332.3	335.3
	Quintile 3	315.7	280.3	299.3	342.0	339.4	340.4
	Quintile 4	330.3	290.1	304.5	337.1	344.4	333.8
	Quintile 5	356.4	298.5	304.9	337.2	318.7	331.7
Placed June deadline applicants per 10,000 population	Quintile 1	37.6	33.8	41.5	43.1	47.5	42.7
	Quintile 2	44.0	41.3	50.9	45.5	54.7	48.5
	Quintile 3	50.0	37.3	48.2	49.6	57.8	56.0
	Quintile 4	49.5	39.3	50.1	44.9	53.3	49.5
	Quintile 5	53.1	40.1	42.6	43.2	46.4	46.2
All placed applicants per 10,000 population	Quintile 1	43.8	40.1	47.1	47.6	52.9	48.5
	Quintile 2	51.9	49.0	56.6	51.7	60.7	54.6
	Quintile 3	58.2	46.6	53.9	56.5	65.1	62.3
	Quintile 4	60.4	48.1	56.3	50.6	59.0	54.5
	Quintile 5	67.3	49.0	49.9	50.4	52.9	51.9

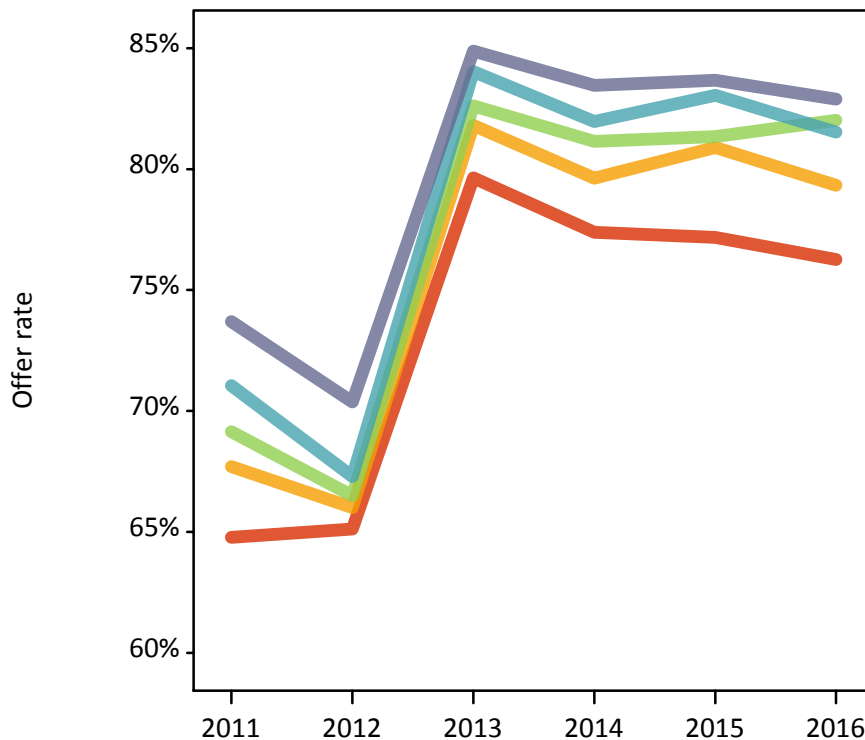
P.8 18 year old applications by POLAR3 quintile

Statistic	POLAR3 quintile	2011	2012	2013	2014	2015	2016
June deadline applications	Quintile 1	4,005	3,600	3,855	4,585	4,605	4,580
	Quintile 2	4,915	4,495	4,840	5,450	5,485	5,370
	Quintile 3	5,405	4,730	5,045	5,755	5,840	5,735
	Quintile 4	5,715	5,055	5,250	5,750	5,945	5,695
	Quintile 5	6,510	5,450	5,490	6,045	5,845	6,000
Offers	Quintile 1	2,595	2,345	3,070	3,550	3,555	3,490
	Quintile 2	3,330	2,965	3,960	4,340	4,435	4,260
	Quintile 3	3,735	3,145	4,165	4,670	4,750	4,705
	Quintile 4	4,060	3,400	4,410	4,715	4,940	4,645
	Quintile 5	4,800	3,835	4,660	5,045	4,890	4,975
Offer rate	Quintile 1	64.8%	65.1%	79.6%	77.4%	77.2%	76.3%
	Quintile 2	67.7%	66.0%	81.8%	79.6%	80.9%	79.3%
	Quintile 3	69.1%	66.5%	82.6%	81.2%	81.3%	82.0%
	Quintile 4	71.0%	67.3%	84.0%	82.0%	83.0%	81.5%
	Quintile 5	73.7%	70.4%	84.9%	83.5%	83.7%	82.9%
Average offer rate	Quintile 1	66.2%	63.4%	80.8%	79.1%	79.5%	78.4%
	Quintile 2	68.6%	65.8%	82.1%	80.1%	81.5%	80.3%
	Quintile 3	69.0%	67.4%	82.7%	81.1%	81.0%	81.1%
	Quintile 4	70.7%	67.6%	83.3%	81.3%	82.0%	80.8%
	Quintile 5	72.6%	70.6%	84.4%	82.4%	82.6%	82.0%
Percentage point difference between offer rate and average offer rate	Quintile 1	-1.4	1.7	-1.2	-1.7	-2.4	-2.1
	Quintile 2	-0.9	0.2	-0.3	-0.5	-0.6	-0.9
	Quintile 3	0.1	-0.9	-0.1	0.0	0.3	0.9
	Quintile 4	0.4	-0.3	0.8	0.6	1.0	0.7
	Quintile 5	1.1	-0.2	0.4	1.1	1.1	0.9
Contribution of group to the average offer rate	Quintile 1	0.204	0.209	0.211	0.217	0.213	0.218
	Quintile 2	0.231	0.242	0.243	0.240	0.239	0.235
	Quintile 3	0.246	0.248	0.247	0.247	0.248	0.249
	Quintile 4	0.255	0.261	0.254	0.250	0.254	0.244
	Quintile 5	0.305	0.299	0.285	0.281	0.273	0.278

P.9 18 year old offer rate by POLAR3 quintile

Note: The line for a group is not plotted when that group made fewer than 10 applications in any of the years from 2011-2016.

- Quintile 1
- Quintile 2
- Quintile 3
- Quintile 4
- Quintile 5



P.10 Percentage point difference between 18 year old offer rate and average offer rate by POLAR3 quintile

Note: The line for a group is not plotted when that group made fewer than 50 applications in any of the years from 2011-2016.

- Quintile 1
- Quintile 2
- Quintile 3
- Quintile 4
- Quintile 5



P.11 18 year old applicants by ethnic group

Statistic	Ethnic group	2011	2012	2013	2014	2015	2016
June deadline applicants	Asian	2,310	2,230	2,275	2,605	2,810	3,040
	Black	635	650	740	900	1,035	995
	Mixed	790	705	775	935	935	1,055
	White	19,955	17,525	18,135	20,110	19,955	19,395
	Other	110	120	155	165	220	235
Placed June deadline applicants	Asian	410	425	500	500	625	630
	Black	110	110	130	125	170	145
	Mixed	125	110	140	145	175	155
	White	2,955	2,300	2,740	2,615	2,960	2,665
	Other	20	30	30	30	45	50
All placed applicants	Asian	520	570	585	575	720	740
	Black	130	140	160	150	190	175
	Mixed	150	130	160	165	205	175
	White	3,535	2,725	3,065	2,940	3,280	2,930
	Other	30	40	40	40	55	55
June deadline applicants per 10,000 population	Asian	366.5	344.2	344.8	384.1	397.3	422.3
	Black	231.9	230.5	248.6	296.2	325.5	318.0
	Mixed	326.2	271.1	285.9	324.7	302.9	335.7
	White	308.2	271.4	288.2	326.0	320.3	320.6
	Other	137.0	137.9	172.0	179.4	226.2	236.7
Placed June deadline applicants per 10,000 population	Asian	65.1	65.3	76.0	73.9	88.2	87.4
	Black	40.6	38.4	43.8	40.9	54.0	46.7
	Mixed	50.8	43.0	52.1	50.4	57.1	49.9
	White	45.7	35.6	43.6	42.4	47.5	44.0
	Other	27.2	31.6	34.2	33.3	44.6	48.3
All placed applicants per 10,000 population	Asian	82.5	88.2	88.5	85.1	101.4	102.8
	Black	47.5	49.7	53.2	49.8	59.4	55.9
	Mixed	61.5	50.3	58.4	57.7	67.1	56.3
	White	54.6	42.2	48.7	47.6	52.6	48.5
	Other	35.8	44.1	46.3	41.9	57.1	55.4

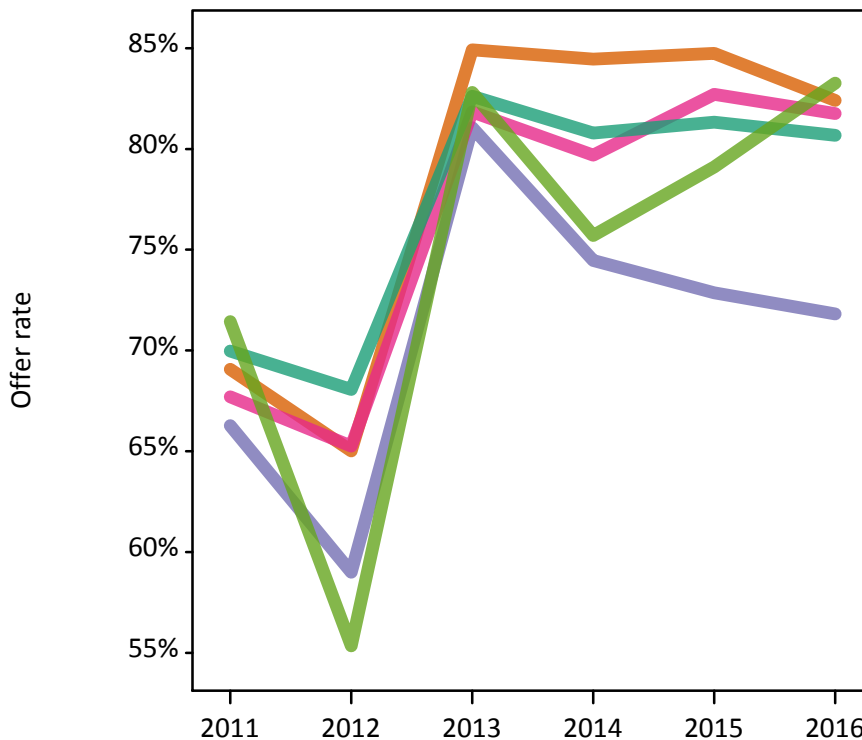
P.12 18 year old applications by ethnic group

Statistic	Ethnic group	2011	2012	2013	2014	2015	2016
June deadline applications	Asian	2,720	2,595	2,685	3,115	3,350	3,575
	Black	680	700	810	1,000	1,140	1,070
	Mixed	875	780	835	1,060	1,030	1,170
	White	22,115	19,090	19,920	22,190	21,885	21,295
	Other	125	160	190	210	270	275
Offers	Asian	1,880	1,685	2,280	2,630	2,840	2,945
	Black	450	415	655	745	830	765
	Mixed	595	510	685	845	850	955
	White	15,475	12,995	16,460	17,925	17,800	17,180
	Other	90	90	160	160	210	230
Offer rate	Asian	69.1%	65.0%	84.9%	84.5%	84.7%	82.4%
	Black	66.3%	59.0%	81.1%	74.5%	72.9%	71.8%
	Mixed	67.7%	65.3%	81.8%	79.7%	82.7%	81.8%
	White	70.0%	68.1%	82.6%	80.8%	81.3%	80.7%
	Other	71.4%	55.3%	82.8%	75.7%	79.1%	83.3%
Average offer rate	Asian	72.4%	68.2%	87.2%	86.2%	86.3%	84.2%
	Black	69.3%	64.3%	83.1%	80.0%	79.7%	79.5%
	Mixed	67.3%	67.2%	82.2%	81.4%	82.0%	82.0%
	White	69.5%	67.3%	82.2%	80.1%	80.7%	79.9%
	Other	71.7%	63.1%	86.8%	84.6%	83.9%	84.3%
Percentage point difference between offer rate and average offer rate	Asian	-3.4	-3.2	-2.3	-1.8	-1.5	-1.8
	Black	-3.0	-5.3	-2.0	-5.5	-6.9	-7.7
	Mixed	0.3	-1.9	-0.3	-1.7	0.7	-0.2
	White	0.5	0.8	0.5	0.7	0.6	0.7
	Other	-0.3	-7.8	-4.0	-8.9	-4.8	-1.0
Contribution of group to the average offer rate	Asian	0.234	0.256	0.234	0.233	0.238	0.236
	Black	0.085	0.092	0.102	0.092	0.094	0.087
	Mixed	0.080	0.088	0.079	0.088	0.078	0.084
	White	0.855	0.844	0.839	0.828	0.816	0.802
	Other	0.062	0.067	0.075	0.078	0.069	0.075

P.13 18 year old offer rate by ethnic group

Note: The line for a group is not plotted when that group made fewer than 10 applications in any of the years from 2011-2016.

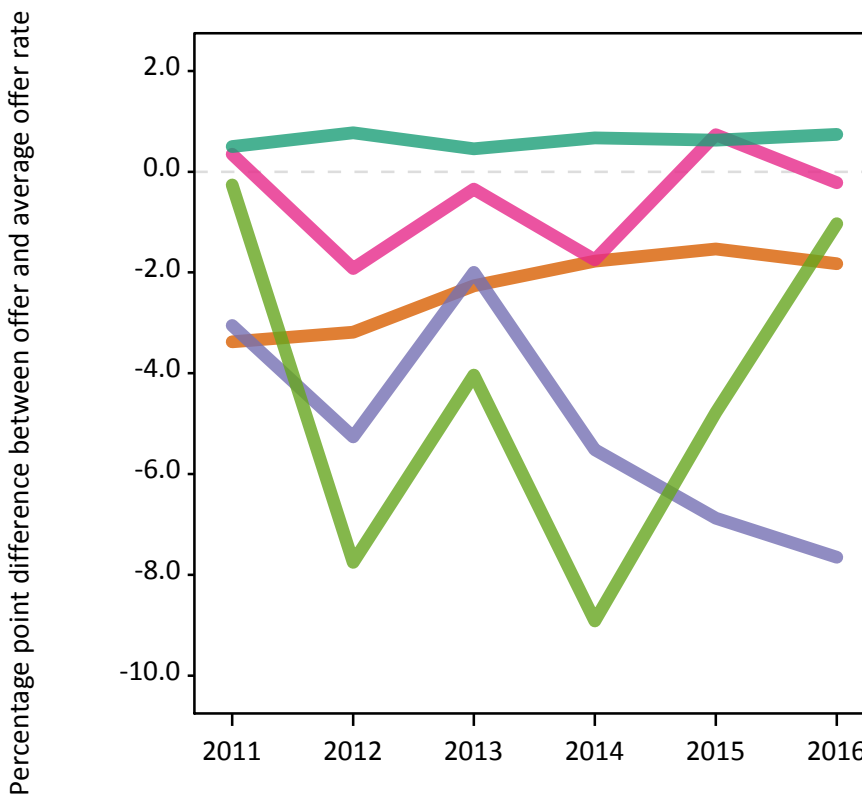
- Asian
- Black
- Mixed
- White
- Other



P.14 Percentage point difference between 18 year old offer rate and average offer rate by ethnic group

Note: The line for a group is not plotted when that group made fewer than 50 applications in any of the years from 2011-2016.

- Asian
- Black
- Mixed
- White
- Other



P.15 Applicants (all ages)

Statistic	2011	2012	2013	2014	2015	2016
June deadline applicants	47,560	40,660	42,475	46,960	46,135	45,865
Placed June deadline applicants	7,250	5,905	7,560	7,430	8,015	7,345
All placed applicants	8,565	7,240	8,630	8,390	9,015	8,310

P.16 Applications (all ages)

Statistic	2011	2012	2013	2014	2015	2016
June deadline applications	54,965	45,985	48,555	54,270	52,840	52,600
Offers	31,410	25,830	34,710	37,770	37,410	36,065
Offer rate	57.1%	56.2%	71.5%	69.6%	70.8%	68.6%

P.17 Applicants (all ages) by sex

Statistic	Sex	2011	2012	2013	2014	2015	2016
June deadline applicants	Men	20,420	17,380	18,390	20,180	19,495	19,285
	Women	27,135	23,280	24,085	26,785	26,640	26,580
Placed June deadline applicants	Men	3,185	2,500	3,275	3,175	3,505	3,090
	Women	4,065	3,405	4,280	4,255	4,510	4,255
All placed applicants	Men	3,770	3,090	3,710	3,540	3,930	3,455
	Women	4,800	4,150	4,920	4,850	5,080	4,860

P.18 Applications (all ages) by sex

Statistic	Sex	2011	2012	2013	2014	2015	2016
June deadline applications	Men	24,085	20,125	21,490	23,900	22,970	22,565
	Women	30,880	25,855	27,065	30,370	29,865	30,035
Offers	Men	14,625	11,425	15,995	17,485	17,025	16,040
	Women	16,785	14,405	18,715	20,285	20,385	20,020
Offer rate	Men	60.7%	56.8%	74.4%	73.2%	74.1%	71.1%
	Women	54.4%	55.7%	69.2%	66.8%	68.3%	66.7%

P.19 Applicants (all ages) by POLAR3 quintile

Statistic	POLAR3 quintile	2011	2012	2013	2014	2015	2016
June deadline applicants	Quintile 1	7,865	7,150	7,345	8,425	8,230	8,275
	Quintile 2	9,075	8,005	8,330	9,395	9,170	9,090
	Quintile 3	9,785	8,435	8,830	9,720	9,705	9,405
	Quintile 4	9,850	8,190	8,845	9,475	9,480	9,215
	Quintile 5	10,865	8,775	9,030	9,865	9,450	9,670
Placed June deadline applicants	Quintile 1	1,210	1,060	1,340	1,395	1,380	1,250
	Quintile 2	1,350	1,240	1,465	1,470	1,610	1,425
	Quintile 3	1,510	1,165	1,610	1,565	1,775	1,620
	Quintile 4	1,485	1,170	1,635	1,495	1,635	1,490
	Quintile 5	1,685	1,260	1,485	1,490	1,590	1,530
All placed applicants	Quintile 1	1,385	1,275	1,530	1,570	1,540	1,430
	Quintile 2	1,580	1,510	1,665	1,665	1,810	1,620
	Quintile 3	1,760	1,475	1,830	1,760	2,005	1,840
	Quintile 4	1,760	1,435	1,860	1,680	1,840	1,665
	Quintile 5	2,060	1,535	1,725	1,700	1,795	1,715

P.20 Applications (all ages) by POLAR3 quintile

Statistic	POLAR3 quintile	2011	2012	2013	2014	2015	2016
June deadline applications	Quintile 1	9,280	8,240	8,550	9,905	9,600	9,660
	Quintile 2	10,550	9,135	9,635	10,975	10,560	10,485
	Quintile 3	11,385	9,535	10,165	11,315	11,240	10,980
	Quintile 4	11,325	9,185	10,030	10,845	10,725	10,415
	Quintile 5	12,295	9,770	10,060	11,135	10,600	10,830
Offers	Quintile 1	4,820	4,350	5,790	6,455	6,310	6,115
	Quintile 2	5,735	5,050	6,680	7,440	7,390	7,025
	Quintile 3	6,360	5,180	7,255	7,890	7,890	7,620
	Quintile 4	6,685	5,295	7,380	7,765	7,830	7,325
	Quintile 5	7,750	5,880	7,525	8,155	7,910	7,830
Offer rate	Quintile 1	51.9%	52.8%	67.7%	65.2%	65.7%	63.3%
	Quintile 2	54.4%	55.3%	69.3%	67.8%	70.0%	67.0%
	Quintile 3	55.8%	54.3%	71.4%	69.7%	70.2%	69.4%
	Quintile 4	59.1%	57.7%	73.6%	71.6%	73.0%	70.3%
	Quintile 5	63.0%	60.2%	74.8%	73.3%	74.6%	72.3%

P.21 Applicants (all ages) by ethnic group

Statistic	Ethnic group	2011	2012	2013	2014	2015	2016
June deadline applicants	Asian	5,245	4,850	4,890	5,340	5,585	5,790
	Black	2,615	2,450	2,420	2,710	2,870	2,855
	Mixed	1,795	1,560	1,630	1,985	1,970	2,095
	White	37,305	31,210	32,860	36,240	34,870	34,250
	Other	350	410	460	495	585	585
Placed June deadline applicants	Asian	865	870	1,060	1,060	1,220	1,180
	Black	340	330	395	375	425	370
	Mixed	285	255	300	340	380	345
	White	5,655	4,345	5,675	5,535	5,835	5,265
	Other	55	80	85	95	110	125
All placed applicants	Asian	1,100	1,200	1,285	1,230	1,445	1,435
	Black	420	455	500	450	490	470
	Mixed	340	310	355	390	440	395
	White	6,595	5,125	6,330	6,165	6,450	5,795
	Other	65	115	110	110	135	150

P.22 Applications (all ages) by ethnic group

Statistic	Ethnic group	2011	2012	2013	2014	2015	2016
June deadline applications	Asian	6,575	5,870	5,985	6,680	6,875	7,110
	Black	3,025	2,825	2,805	3,170	3,325	3,270
	Mixed	2,125	1,805	1,860	2,325	2,265	2,465
	White	42,485	34,735	37,065	41,210	39,300	38,670
	Other	435	530	590	655	745	750
Offers	Asian	3,735	3,230	4,535	4,900	5,100	5,120
	Black	1,175	1,125	1,610	1,670	1,800	1,655
	Mixed	1,125	960	1,285	1,585	1,585	1,670
	White	25,015	20,155	26,730	29,035	28,250	26,920
	Other	215	260	400	435	480	490
Offer rate	Asian	56.8%	55.0%	75.7%	73.4%	74.2%	72.0%
	Black	38.8%	39.9%	57.3%	52.7%	54.1%	50.6%
	Mixed	53.0%	53.1%	69.1%	68.1%	70.0%	67.8%
	White	58.9%	58.0%	72.1%	70.5%	71.9%	69.6%
	Other	48.7%	49.1%	67.9%	66.0%	64.0%	65.2%

Technical Notes and Definitions

UCAS undergraduate scheme

Adjustment

Adjustment allows applicants who have met and exceeded the terms of their conditional firm offer to seek and find a place at another provider whilst keeping their place at their original firm choice provider.

Clearing

Clearing is a route for applicants that are not placed and holding no offers to find a place on courses with vacancies.

Cycle year

The UCAS application cycle which runs from September to October the following year. For example the 2016 cycle runs from September 2015 through to October 2016.

End of cycle

The point in the cycle to which the numbers in this report refer, and the point at which the cycle is closed such that no more applications or offers can be made, and no more applicants can be placed. Numbers reported at the end of cycle exclude information on a small number of applicants who cancelled during the cycle.

Extra

Applicants who are unsuccessful in obtaining an offer or decline all offers may be eligible to apply through Extra, where they can apply to one further course at a time. Extra operates from 25 February until early July. It provides applicants who are eligible the possibility of obtaining an offer before exam results are published and Clearing starts.

June 30 deadline

The deadline for main scheme applications. Applicants who apply after this date will go directly into Clearing.

Record of Prior Acceptance (RPA)

RPA is an acceptance route used when a provider informs UCAS of applicants it has accepted outside of the normal application process (e.g. individuals who have applied directly to the provider).

Reporting groups

Ethnic group

High level grouping of ethnic origin as declared by the applicant: 'White', 'Black', 'Asian', 'Mixed', 'Other', 'Unknown'. Applicants who declare themselves as 'Unknown' ethnic origin are not reported in these tables, but are included in the associated csv data file.

POLAR3 quintile

Developed by HEFCE, POLAR3 classifies small areas across the UK into five groups according to their level of young participation in Higher Education. Each of these groups represents around 20 per cent of young people and is ranked from Quintile 1 (areas with the lowest young participation rates, considered as the most disadvantaged) to Quintile 5 (highest young participation rates, considered most advantaged). POLAR3 is based on the participation rates of young people between 2005 and 2009 who entered Higher Education between 2005-06 and 2010-11, therefore is most suitable for applicants aged 19 and under. These groups are assigned using the postcode declared by the applicant at the time of their application. If a UK postcode is invalid, considered unsafe for measurement or there is no link to Census geography possible then the applicant is not assigned to a quintile. Applicants with no POLAR3 quintile are not reported.

Sex

Sex as declared by the applicant.

SIMD quintile

Scottish index of multiple deprivation (SIMD) for 2012 identifies small area concentrations of multiple deprivation across all of Scotland, providing a relative measure of deprivation amongst 6505 small areas (data zones) based on 7 socio-economic domains. These small areas are classified into five groups ranked from Quintile 1 (considered the most deprived) to Quintile 5 (considered least deprived), with equal populations in each quintile. Quintiles are assigned using the postcode declared by the applicant, applicants declaring invalid postcodes are classified as 'Not assigned' and are not reported.

SIMD is only defined for applicants domiciled in Scotland, therefore any applicants domiciled outside of Scotland cannot be assigned to an SIMD quintile and so are not reported for this measure.

SIMD is only reported for providers in Scotland. Application and entry rates by SIMD are reported in the 2016 End of Cycle Report and the 2016 cycle January deadline application rate report.

Statistics reported in the tables

All placed applicants

The number of applicants placed for entry into higher education at the provider through one of their choices, including any choices made through Extra, or via Adjustment, Clearing or RPA.

All placed applicants per 10,000 population

The number of total UK domiciled 18 year old placed applicants for entry into higher education at the provider divided by the number of UK 18 year olds in the population, multiplied by 10,000. This gives the number of 18 year olds, for every 10,000 in the population, that were placed at the provider through one of their choices, including any choices made through Extra, or via Adjustment, Clearing or RPA. It is an alternative way of expressing the entry rate to a provider. By referencing the underlying population this statistic shows how the number of placed applicants is changing in relation to the available pool of potential applicants and so gives the chance that somebody from the group will be placed at a provider.

This statistic is only reported for 18 year olds.

Average offer rate

The offer rate that you might expect if the predicted grades and subject choice of applicants were the only factors that influenced whether an applicant was made an offer by the provider. The average offer rate is calculated by dividing applicants according to their specific combination of grades (for A levels the best three predicted grades are used, for BTECs, International Baccalaureate and Scottish Highers and Advanced Highers, predicted grades along with any grades already achieved upon applying are used) and subject choice. For each combination the number of main scheme offers is divided by the number of main scheme applications, to give an overall offer rate. This is then multiplied by the number of applications made by the group for which the average offer rate is being calculated (for example POLAR3 quintile 1), to give an average number of offers for that group. These average number of offers are then added together across all combinations of predicted grade and subject and divided by the number of main scheme applications from the group to give the average offer rate.

The average offer rate does not attempt to control for any other factors that may play a part in the decision to make an offer, such as the subject of the qualifications studied, their relevance to a course, or the grade in each subject; higher numbers of A levels being studied; the exact profile of grades predicted; personal statements; teacher references; interviews; or any other criteria (such as work experience or portfolios) that may be part of the admissions decision.

This statistic is only reported for 18 year olds.

Contribution of group to the average offer rate

The way in which the average offer rate is defined means that the pattern of application and offers of a group (for example POLAR3 quintile 1) will always contribute, in part, to the average offer rate for that group. When this contribution is large, the average offer rate will mainly reflect the patterns for the group, meaning that the value of the average offer rate will be similar to the offer rate, the percentage point difference statistic will be small, and any real difference between the offer rate and what might be expected given the predicted grades and subject choices of the applicants will be difficult to detect.

Values of the contribution of group to the average offer rate range between 0 and 1. The closer the value is to 1 the greater the contribution a group makes to its own average offer rate.

This statistic is only reported for 18 year olds.

Placed June deadline applicants

An applicant who has been placed for entry into higher education at the provider through a June deadline application.

Placed June deadline applicants per 10,000 population

The number of UK domiciled 18 year old placed June deadline applicants at the provider divided by the number of UK 18 year olds in the population, multiplied by 10,000. This gives the number of 18 year olds, for every 10,000 in the population, that were placed at the provider through one of their June deadline applications. It is an alternative way of expressing the entry rate to a provider, but for placed June deadline applicants only. By referencing the underlying population this statistic shows how the number of placed June deadline applicants is changing in relation to the available pool of potential 18 year old applicants and so gives the chance that somebody from the group will be placed at a provider through a June deadline application.

This statistic is only reported for 18 year olds.

June deadline applications

An application (or choice) to a course in higher education to the provider that is made by the June 30 deadline. Each applicant can make up to five choices this way. The number of June deadline applications does not include choices made through the following routes: Clearing, Extra, Adjustment and RPAs. Applications made to October deadline courses received after the October deadline are not included in these statistics.

June deadline applicants

The number of applicants that made at least one application to the provider by the June 30 deadline.

June deadline applicants per 10,000 population

The number of UK domiciled 18 year old June deadline applicants to the provider divided by the number of UK 18 year olds in the population, multiplied by 10,000. This gives the number of 18 year olds, for every 10,000 in the population, who applied by the June 30 deadline. It is equivalent to the application rate. By referencing the underlying population this statistic shows how the number of June deadline applicants is changing in relation to the available pool of potential 18 year old applicants and so gives the chance that somebody from the group will apply to a provider by the June 30 deadline.

This statistic is only reported for 18 year olds.

Offers

An offer is defined as a provider's decision in response to an application to offer a place to an applicant, often subject to the applicant satisfying academic and/or other criteria, via a June deadline application (i.e. does not cover choices made through the following routes: Clearing, Extra, Adjustment and RPAs).

Offer rate

The number of offers made divided by the number of June deadline applications. This gives the proportion of all June deadline applications to the provider that received an offer.

Percentage point difference between offer rate and average offer rate

The offer rate minus the average offer rate.

The percentage point difference can be compared to the expected range of statistical variation resulting from the calculation of the average offer rate using the Average Offer Rate Lookup Table. Where the value of the percentage point difference lies outside of this range, the percentage point difference may be considered to represent a real difference between the offer rate and the average offer rate.

Other definitions

Age

This analysis uses country-specific age definitions that align with the cut off points for school and college cohorts within the different administrations of the UK. For England and Wales, ages are defined on the 31 August, for Northern Ireland on the 1 July and for Scotland on the 28 February the following year. Defining ages in this way matches the assignment of children to school cohorts. For applicants outside of the UK a cohort cut off of 31 August has been used.

Provider

A higher education provider - a university or college.

UK domiciled

Declared area of permanent residence within England, Northern Ireland, Scotland and Wales. Applicants from the Channel Islands and Isle of Man are not included.