

N77 Northumbria University

Cycle years: 2011 - 2016

Cycle Reference Point: End of Cycle

Applicant coverage: UK domiciled

Reporting groups: Sex, POLAR3, ethnic group

Applicant statistics: June deadline applicants, placed June deadline applicants, all placed applicants, June deadline applicants per 10,000 population, placed June deadline applicants per 10,000 population, all placed applicants per 10,000 population

Application statistics: June deadline applications, offers, offer rate, average offer rate, percentage point difference between offer rate and average offer rate, contribution of group to the average offer rate

Non-disclosure controls: To avoid the disclosure of information about any individual the following measures are taken

- Applicants, placed applicants, applications and offers are rounded to the nearest 5.
- Applicants/placed applicants per 10,000 population figures are reported as 0 if the applicant/placed applicant figures are rounded to 0.
- All statistics related to the offer rate are not reported when the number of applications for a group is less than 10. The percentage point difference between the offer rate and the average offer rate is not reported when the number of applications for a group is less than 50.
- Offer rates are reported as 0% if there are fewer than 5 offers, and 100% if the number of offers is within 5 of the number of applications. When the offer rate is reported as 0% or 100%, it is reported in italics.

Contents:

18 year old applicants:	P.1
18 year old applications:	P.2
18 year old applicants by sex:	P.3
18 year old applications by sex:	P.4
18 year old applicants by POLAR3 quintile:	P.7
18 year old applications by POLAR3 quintile:	P.8
18 year old applicants by ethnic group:	P.11
18 year old applications by ethnic group:	P.12
Applicants (all ages):	P.15
Applications (all ages):	P.16
Applicants (all ages) by sex:	P.17
Applications (all ages) by sex:	P.18
Applicants (all ages) by POLAR3 quintile:	P.19
Applications (all ages) by POLAR3 quintile:	P.20
Applicants (all ages) by ethnic group:	P.21
Applications (all ages) by ethnic group:	P.22

P.1 18 year old applicants

Statistic	2011	2012	2013	2014	2015	2016
June deadline applicants	12,920	13,050	13,625	13,150	13,380	13,050
Placed June deadline applicants	2,965	2,970	3,185	2,765	2,700	2,815
All placed applicants	3,395	3,325	3,450	3,075	3,055	3,195
June deadline applicants per 10,000 population	167.8	168.7	179.0	174.6	174.6	174.1
Placed June deadline applicants per 10,000	38.5	38.4	41.8	36.7	35.2	37.6
All placed applicants per 10,000 population	44.1	43.0	45.3	40.9	39.9	42.6

P.2 18 year old applications

Statistic	2011	2012	2013	2014	2015	2016
June deadline applications	15,160	14,980	15,320	14,765	15,060	14,750
Offers	10,290	11,150	12,195	11,760	12,145	12,120
Offer rate	67.9%	74.4%	79.6%	79.6%	80.6%	82.2%

P.3 18 year old applicants by sex

Statistic	Sex	2011	2012	2013	2014	2015	2016
June deadline applicants	Men	5,455	5,555	5,840	5,620	5,565	5,415
	Women	7,470	7,495	7,785	7,530	7,815	7,630
Placed June deadline applicants	Men	1,330	1,360	1,470	1,220	1,230	1,310
	Women	1,635	1,610	1,710	1,545	1,470	1,505
All placed applicants	Men	1,540	1,535	1,590	1,375	1,390	1,475
	Women	1,855	1,790	1,860	1,705	1,670	1,720
June deadline applicants per 10,000 population	Men	138.6	140.1	149.5	145.1	141.8	141.0
	Women	198.3	198.8	210.1	205.7	209.2	208.8
Placed June deadline applicants per 10,000 population	Men	33.7	34.3	37.7	31.6	31.3	34.2
	Women	43.4	42.8	46.2	42.2	39.3	41.1
All placed applicants per 10,000 population	Men	39.2	38.7	40.7	35.5	35.4	38.4
	Women	49.2	47.5	50.1	46.5	44.6	47.0

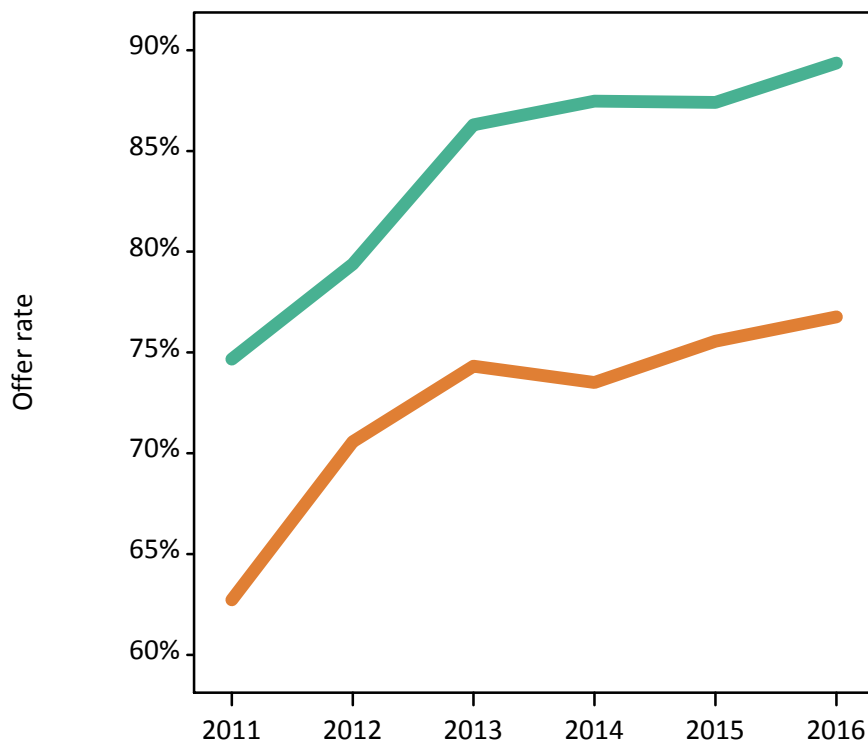
P.4 18 year old applications by sex

Statistic	Sex	2011	2012	2013	2014	2015	2016
June deadline applications	Men	6,550	6,570	6,755	6,485	6,460	6,325
	Women	8,605	8,410	8,560	8,280	8,600	8,425
Offers	Men	4,890	5,215	5,830	5,670	5,645	5,650
	Women	5,400	5,935	6,365	6,090	6,495	6,470
Offer rate	Men	74.7%	79.4%	86.3%	87.5%	87.4%	89.4%
	Women	62.7%	70.6%	74.3%	73.5%	75.6%	76.8%
Average offer rate	Men	74.7%	79.7%	86.2%	87.6%	87.6%	89.9%
	Women	62.7%	70.3%	74.4%	73.4%	75.4%	76.3%
Percentage point difference between offer rate and average offer rate	Men	-0.1	-0.3	0.1	-0.1	-0.2	-0.6
	Women	0.1	0.2	-0.1	0.1	0.1	0.4
Contribution of group to the average offer rate	Men	0.606	0.613	0.619	0.625	0.615	0.629
	Women	0.700	0.698	0.699	0.706	0.711	0.721

P.5 18 year old offer rate by sex

Note: The line for a group is not plotted when that group made fewer than 10 applications in any of the years from 2011-2016.

Men
Women



P.6 Percentage point difference between 18 year old offer rate and average offer rate by sex

Note: The line for a group is not plotted when that group made fewer than 50 applications in any of the years from 2011-2016.

Men
Women



P.7 18 year old applicants by POLAR3 quintile

Statistic	POLAR3 quintile	2011	2012	2013	2014	2015	2016
June deadline applicants	Quintile 1	1,775	1,830	1,985	1,965	2,150	2,120
	Quintile 2	2,065	2,065	2,235	2,370	2,405	2,255
	Quintile 3	2,405	2,400	2,495	2,490	2,485	2,365
	Quintile 4	2,865	2,905	3,100	2,805	2,805	2,785
	Quintile 5	3,780	3,820	3,785	3,490	3,505	3,470
Placed June deadline applicants	Quintile 1	370	405	415	430	515	500
	Quintile 2	480	490	555	535	525	540
	Quintile 3	560	540	630	510	500	520
	Quintile 4	655	680	730	570	535	575
	Quintile 5	895	845	850	715	620	660
All placed applicants	Quintile 1	415	450	455	485	570	565
	Quintile 2	540	555	600	580	595	615
	Quintile 3	630	610	675	560	565	590
	Quintile 4	755	750	775	625	605	650
	Quintile 5	1,050	955	935	820	710	750
June deadline applicants per 10,000 population	Quintile 1	123.3	128.3	142.6	141.3	153.3	157.0
	Quintile 2	137.4	137.9	151.5	162.1	161.9	156.1
	Quintile 3	156.4	155.5	163.5	165.4	162.0	157.5
	Quintile 4	183.0	183.1	198.1	182.1	179.3	180.5
	Quintile 5	228.5	227.5	228.8	214.0	209.5	209.9
Placed June deadline applicants per 10,000 population	Quintile 1	25.7	28.4	29.8	31.0	36.6	37.2
	Quintile 2	31.9	32.7	37.8	36.5	35.3	37.5
	Quintile 3	36.4	35.1	41.2	34.0	32.4	34.5
	Quintile 4	41.8	42.8	46.5	36.9	34.2	37.4
	Quintile 5	54.1	50.4	51.5	43.8	37.0	40.0
All placed applicants per 10,000 population	Quintile 1	28.8	31.7	32.6	34.7	40.7	42.0
	Quintile 2	35.9	36.9	40.9	39.6	40.1	42.5
	Quintile 3	40.9	39.6	44.2	37.3	36.7	39.4
	Quintile 4	48.3	47.1	49.6	40.7	38.7	42.2
	Quintile 5	63.4	56.7	56.7	50.3	42.5	45.5

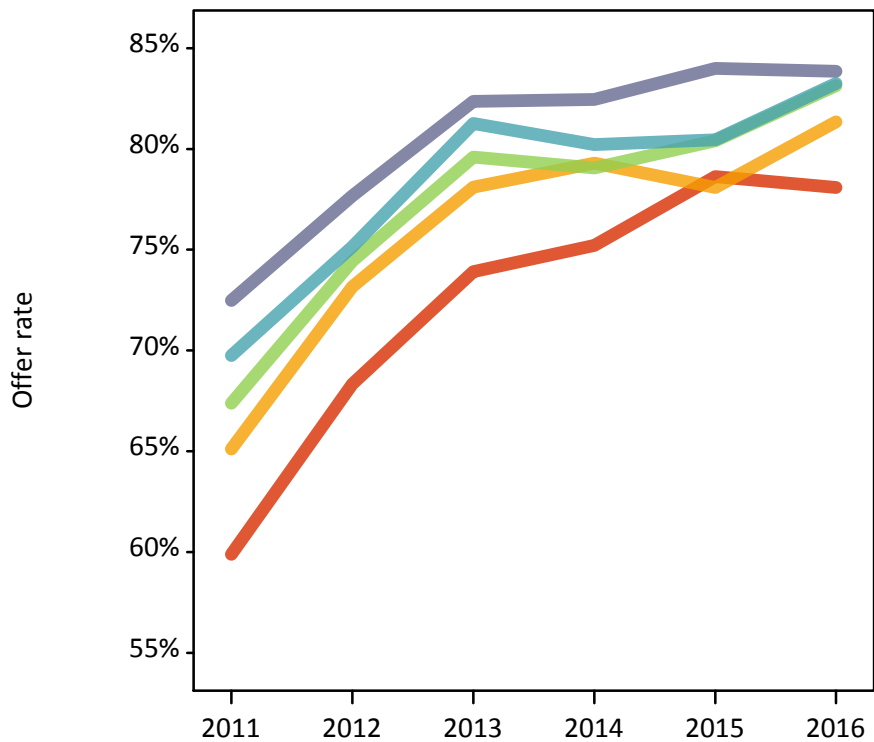
P.8 18 year old applications by POLAR3 quintile

Statistic	POLAR3 quintile	2011	2012	2013	2014	2015	2016
June deadline applications	Quintile 1	2,160	2,145	2,280	2,245	2,490	2,505
	Quintile 2	2,495	2,420	2,555	2,765	2,780	2,615
	Quintile 3	2,865	2,805	2,820	2,830	2,815	2,675
	Quintile 4	3,270	3,275	3,440	3,060	3,050	3,070
	Quintile 5	4,330	4,305	4,190	3,835	3,895	3,820
Offers	Quintile 1	1,295	1,465	1,685	1,690	1,955	1,955
	Quintile 2	1,625	1,770	1,995	2,190	2,170	2,125
	Quintile 3	1,930	2,090	2,245	2,240	2,260	2,225
	Quintile 4	2,280	2,460	2,795	2,455	2,455	2,555
	Quintile 5	3,140	3,345	3,450	3,165	3,270	3,205
Offer rate	Quintile 1	59.9%	68.3%	73.9%	75.2%	78.6%	78.1%
	Quintile 2	65.1%	73.2%	78.1%	79.3%	78.1%	81.3%
	Quintile 3	67.4%	74.4%	79.6%	79.1%	80.4%	83.1%
	Quintile 4	69.7%	75.2%	81.3%	80.2%	80.5%	83.3%
	Quintile 5	72.5%	77.7%	82.4%	82.5%	84.0%	83.9%
Average offer rate	Quintile 1	62.6%	69.7%	75.8%	75.9%	78.8%	79.1%
	Quintile 2	65.4%	72.5%	78.2%	78.9%	79.2%	81.6%
	Quintile 3	67.1%	74.8%	78.2%	78.8%	80.1%	81.8%
	Quintile 4	68.7%	74.8%	80.7%	80.5%	80.5%	82.8%
	Quintile 5	71.9%	77.5%	82.7%	82.3%	83.3%	84.3%
Percentage point difference between offer rate and average offer rate	Quintile 1	-2.8	-1.4	-1.9	-0.7	-0.2	-1.0
	Quintile 2	-0.2	0.7	-0.1	0.4	-1.1	-0.2
	Quintile 3	0.3	-0.3	1.4	0.3	0.3	1.3
	Quintile 4	1.0	0.4	0.6	-0.3	-0.0	0.4
	Quintile 5	0.5	0.2	-0.3	0.1	0.7	-0.5
Contribution of group to the average offer rate	Quintile 1	0.213	0.222	0.219	0.228	0.240	0.243
	Quintile 2	0.226	0.221	0.224	0.248	0.246	0.233
	Quintile 3	0.236	0.241	0.239	0.242	0.235	0.232
	Quintile 4	0.268	0.271	0.276	0.260	0.259	0.257
	Quintile 5	0.357	0.364	0.354	0.344	0.342	0.345

P.9 18 year old offer rate by POLAR3 quintile

Note: The line for a group is not plotted when that group made fewer than 10 applications in any of the years from 2011-2016.

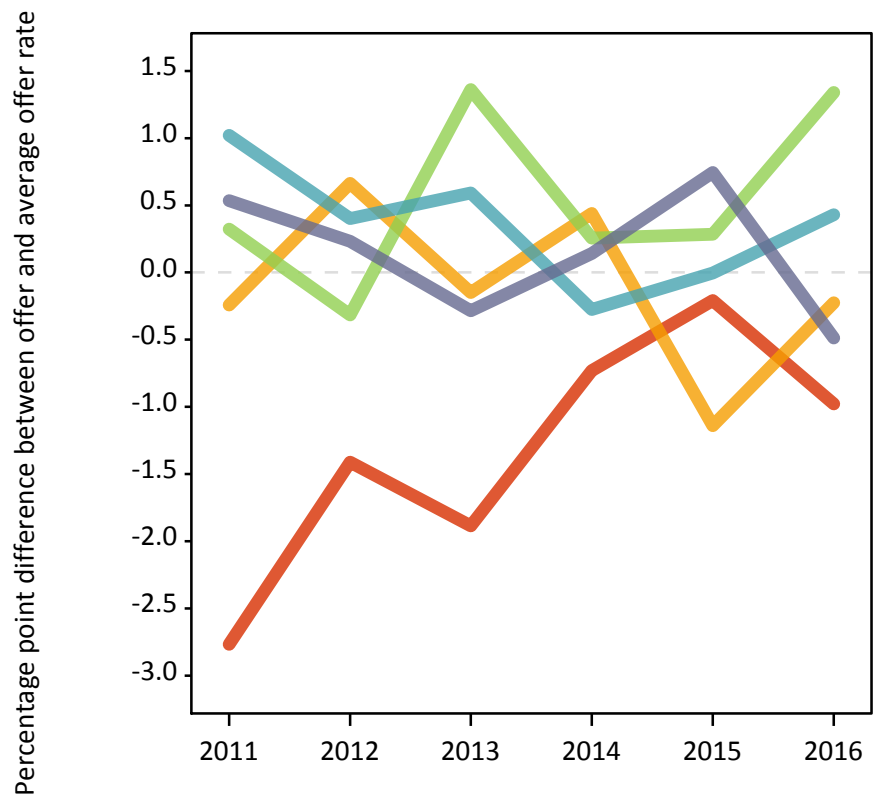
- Quintile 1
- Quintile 2
- Quintile 3
- Quintile 4
- Quintile 5



P.10 Percentage point difference between 18 year old offer rate and average offer rate by POLAR3 quintile

Note: The line for a group is not plotted when that group made fewer than 50 applications in any of the years from 2011-2016.

- Quintile 1
- Quintile 2
- Quintile 3
- Quintile 4
- Quintile 5



P.11 18 year old applicants by ethnic group

Statistic	Ethnic group	2011	2012	2013	2014	2015	2016
June deadline applicants	Asian	305	355	380	350	455	495
	Black	105	155	180	185	245	180
	Mixed	210	250	275	290	330	325
	White	12,255	12,230	12,730	12,285	12,270	11,965
	Other	20	40	45	25	50	60
Placed June deadline applicants	Asian	55	70	80	65	95	125
	Black	10	20	20	25	20	20
	Mixed	35	55	60	50	55	65
	White	2,860	2,815	3,010	2,615	2,515	2,590
	Other	5	5	5	5	10	15
All placed applicants	Asian	80	85	90	75	120	155
	Black	10	20	25	35	25	30
	Mixed	45	60	70	60	65	80
	White	3,255	3,150	3,255	2,900	2,830	2,910
	Other	5	5	5	10	15	15
June deadline applicants per 10,000 population	Asian	48.4	55.0	57.3	51.6	64.1	68.9
	Black	39.1	54.7	60.3	61.4	77.0	57.5
	Mixed	87.1	96.7	101.3	100.5	107.0	103.6
	White	189.3	189.4	202.3	199.2	196.9	197.8
	Other	27.2	45.2	50.7	26.9	53.9	60.4
Placed June deadline applicants per 10,000 population	Asian	9.0	11.0	12.4	9.7	13.7	17.1
	Black	3.3	7.1	7.4	7.9	6.0	6.7
	Mixed	13.6	21.9	22.9	18.1	17.2	21.3
	White	44.2	43.6	47.8	42.4	40.4	42.8
	Other	3.7	6.8	7.7	6.4	12.4	14.1
All placed applicants per 10,000 population	Asian	12.7	13.1	13.8	10.9	16.8	21.3
	Black	3.7	7.8	8.1	11.5	7.2	9.6
	Mixed	17.8	23.8	25.1	20.5	21.1	25.1
	White	50.3	48.8	51.7	47.0	45.4	48.1
	Other	4.9	7.9	7.7	8.6	14.5	16.1

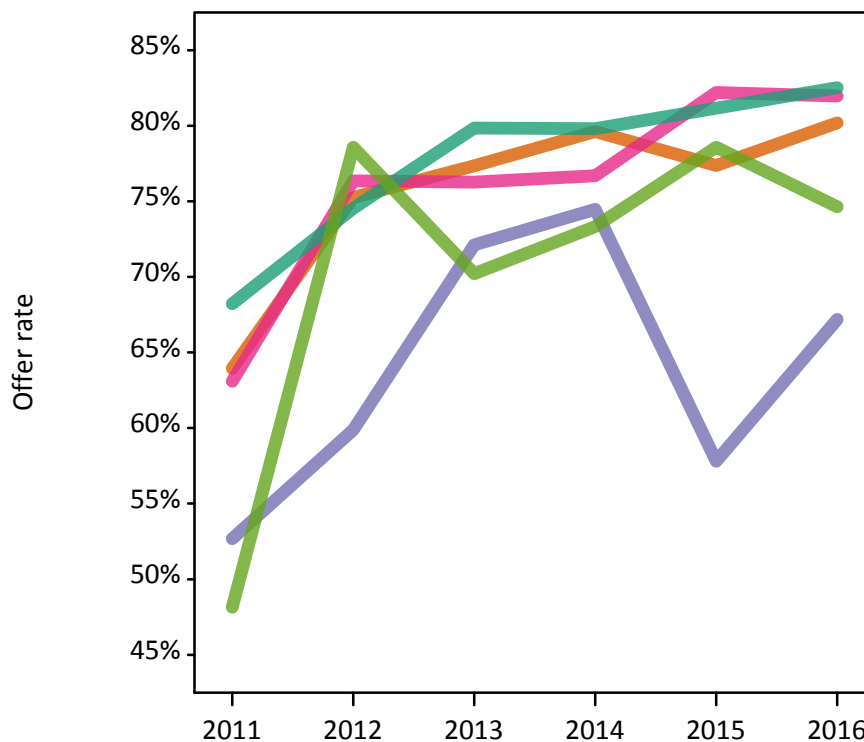
P.12 18 year old applications by ethnic group

Statistic	Ethnic group	2011	2012	2013	2014	2015	2016
June deadline applications	Asian	370	405	445	410	540	600
	Black	110	160	185	190	255	190
	Mixed	235	275	295	310	355	355
	White	14,390	14,080	14,330	13,810	13,820	13,510
	Other	25	40	45	30	55	70
Offers	Asian	235	305	345	330	415	480
	Black	60	95	130	145	150	125
	Mixed	145	210	225	235	290	290
	White	9,820	10,490	11,445	11,020	11,215	11,150
	Other	15	35	35	20	45	55
Offer rate	Asian	64.0%	75.2%	77.4%	79.6%	77.4%	80.2%
	Black	52.7%	59.9%	72.1%	74.5%	57.8%	67.2%
	Mixed	63.1%	76.4%	76.3%	76.7%	82.2%	82.0%
	White	68.2%	74.5%	79.9%	79.8%	81.2%	82.5%
	Other	48.1%	78.6%	70.2%	73.3%	78.6%	74.6%
Average offer rate	Asian	65.9%	76.2%	78.8%	80.7%	80.1%	83.2%
	Black	59.7%	69.6%	77.4%	81.1%	70.1%	76.8%
	Mixed	67.6%	77.0%	81.5%	78.7%	84.4%	83.1%
	White	68.0%	74.4%	79.6%	79.6%	80.7%	82.2%
	Other	75.3%	79.6%	81.6%	85.4%	83.9%	82.9%
Percentage point difference between offer rate and average offer rate	Asian	-1.9	-0.9	-1.4	-1.0	-2.8	-3.0
	Black	-7.0	-9.7	-5.3	-6.7	-12.3	-9.6
	Mixed	-4.6	-0.7	-5.3	-2.0	-2.2	-1.2
	White	0.2	0.2	0.3	0.2	0.4	0.3
	Other	N/A	N/A	N/A	N/A	-5.3	-8.3
Contribution of group to the average offer rate	Asian	0.110	0.116	0.119	0.117	0.114	0.126
	Black	0.078	0.072	0.082	0.081	0.084	0.085
	Mixed	0.088	0.071	0.090	0.085	0.086	0.090
	White	0.954	0.945	0.942	0.941	0.925	0.923
	Other	0.061	0.040	0.137	0.073	0.066	0.078

P.13 18 year old offer rate by ethnic group

Note: The line for a group is not plotted when that group made fewer than 10 applications in any of the years from 2011-2016.

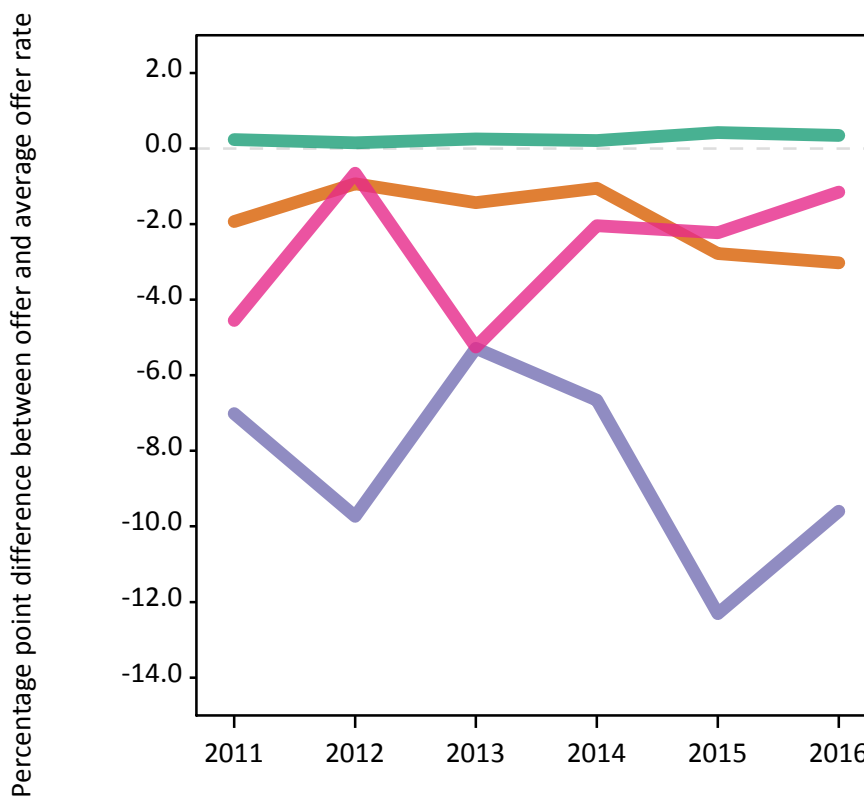
- Asian
- Black
- Mixed
- White
- Other



P.14 Percentage point difference between 18 year old offer rate and average offer rate by ethnic group

Note: The line for a group is not plotted when that group made fewer than 50 applications in any of the years from 2011-2016.

- Asian
- Black
- Mixed
- White
- Other



P.15 Applicants (all ages)

Statistic	2011	2012	2013	2014	2015	2016
June deadline applicants	22,650	21,240	23,040	22,770	23,195	21,930
Placed June deadline applicants	5,320	4,830	5,590	5,045	4,915	5,085
All placed applicants	6,010	5,475	6,060	5,595	5,605	5,885

P.16 Applications (all ages)

Statistic	2011	2012	2013	2014	2015	2016
June deadline applications	27,495	24,740	26,435	26,160	26,370	25,065
Offers	16,225	16,245	18,780	18,565	19,020	18,455
Offer rate	59.0%	65.7%	71.0%	71.0%	72.1%	73.6%

P.17 Applicants (all ages) by sex

Statistic	Sex	2011	2012	2013	2014	2015	2016
June deadline applicants	Men	9,575	8,995	9,855	9,615	9,580	8,875
	Women	13,075	12,240	13,185	13,155	13,615	13,055
Placed June deadline applicants	Men	2,310	2,130	2,540	2,250	2,155	2,230
	Women	3,010	2,695	3,050	2,795	2,760	2,860
All placed applicants	Men	2,645	2,440	2,770	2,525	2,495	2,620
	Women	3,370	3,040	3,290	3,075	3,110	3,265

P.18 Applications (all ages) by sex

Statistic	Sex	2011	2012	2013	2014	2015	2016
June deadline applications	Men	11,785	10,790	11,630	11,345	11,220	10,495
	Women	15,710	13,950	14,805	14,815	15,150	14,570
Offers	Men	7,825	7,785	9,245	9,245	9,050	8,640
	Women	8,400	8,460	9,535	9,320	9,970	9,815
Offer rate	Men	66.4%	72.2%	79.5%	81.5%	80.7%	82.4%
	Women	53.5%	60.7%	64.4%	62.9%	65.8%	67.4%

P.19 Applicants (all ages) by POLAR3 quintile

Statistic	POLAR3 quintile	2011	2012	2013	2014	2015	2016
June deadline applicants	Quintile 1	3,900	3,605	4,010	4,070	4,215	4,005
	Quintile 2	3,870	3,575	4,030	4,175	4,235	3,945
	Quintile 3	4,145	3,870	4,220	4,250	4,260	3,980
	Quintile 4	4,655	4,420	4,830	4,585	4,725	4,470
	Quintile 5	6,030	5,720	5,890	5,645	5,715	5,440
Placed June deadline applicants	Quintile 1	825	785	930	895	1,000	1,000
	Quintile 2	895	850	1,045	980	960	1,005
	Quintile 3	965	870	1,080	935	890	935
	Quintile 4	1,120	1,030	1,150	1,015	965	955
	Quintile 5	1,500	1,285	1,370	1,205	1,085	1,170
All placed applicants	Quintile 1	935	905	1,010	990	1,125	1,130
	Quintile 2	1,005	965	1,120	1,065	1,090	1,150
	Quintile 3	1,075	985	1,170	1,030	995	1,110
	Quintile 4	1,270	1,145	1,235	1,110	1,105	1,105
	Quintile 5	1,715	1,465	1,515	1,390	1,270	1,360

P.20 Applications (all ages) by POLAR3 quintile

Statistic	POLAR3 quintile	2011	2012	2013	2014	2015	2016
June deadline applications	Quintile 1	5,005	4,335	4,740	4,805	4,930	4,735
	Quintile 2	4,820	4,220	4,715	4,945	4,915	4,620
	Quintile 3	5,110	4,560	4,900	4,905	4,825	4,515
	Quintile 4	5,475	5,060	5,420	5,145	5,225	4,975
	Quintile 5	7,025	6,505	6,595	6,310	6,420	6,095
Offers	Quintile 1	2,460	2,445	2,985	3,055	3,305	3,170
	Quintile 2	2,685	2,640	3,215	3,395	3,400	3,330
	Quintile 3	2,940	3,000	3,495	3,475	3,460	3,360
	Quintile 4	3,455	3,485	4,050	3,785	3,845	3,740
	Quintile 5	4,655	4,640	5,000	4,820	4,965	4,775
Offer rate	Quintile 1	49.1%	56.4%	62.9%	63.5%	67.0%	66.9%
	Quintile 2	55.7%	62.5%	68.1%	68.7%	69.1%	72.0%
	Quintile 3	57.5%	65.8%	71.3%	70.9%	71.7%	74.3%
	Quintile 4	63.1%	68.8%	74.7%	73.6%	73.6%	75.2%
	Quintile 5	66.2%	71.3%	75.8%	76.4%	77.4%	78.3%

P.21 Applicants (all ages) by ethnic group

Statistic	Ethnic group	2011	2012	2013	2014	2015	2016
June deadline applicants	Asian	690	710	730	770	900	970
	Black	435	455	505	500	665	580
	Mixed	420	455	490	520	605	575
	White	20,980	19,470	21,145	20,860	20,805	19,590
	Other	75	95	110	80	135	120
Placed June deadline applicants	Asian	135	145	160	170	185	235
	Black	45	50	60	60	65	90
	Mixed	75	100	120	90	110	120
	White	5,045	4,505	5,215	4,700	4,515	4,585
	Other	15	15	20	15	30	25
All placed applicants	Asian	170	185	175	190	235	330
	Black	50	65	70	80	85	140
	Mixed	90	120	130	105	130	145
	White	5,675	5,075	5,655	5,195	5,090	5,180
	Other	15	20	25	20	40	30

P.22 Applications (all ages) by ethnic group

Statistic	Ethnic group	2011	2012	2013	2014	2015	2016
June deadline applications	Asian	860	855	875	930	1,060	1,185
	Black	510	515	555	535	710	640
	Mixed	470	510	545	575	665	630
	White	25,500	22,690	24,280	23,975	23,690	22,365
	Other	100	105	120	90	150	140
Offers	Asian	465	540	600	670	720	860
	Black	155	205	280	295	330	305
	Mixed	255	335	375	405	485	470
	White	15,280	15,070	17,410	17,110	17,310	16,660
	Other	35	60	75	65	105	90
Offer rate	Asian	54.1%	62.9%	68.4%	72.1%	67.8%	72.5%
	Black	30.4%	40.1%	50.5%	54.6%	46.5%	47.8%
	Mixed	53.7%	66.1%	68.9%	70.3%	72.6%	74.2%
	White	59.9%	66.4%	71.7%	71.4%	73.1%	74.5%
	Other	37.4%	56.7%	64.4%	69.6%	69.5%	64.5%

Technical Notes and Definitions

UCAS undergraduate scheme

Adjustment

Adjustment allows applicants who have met and exceeded the terms of their conditional firm offer to seek and find a place at another provider whilst keeping their place at their original firm choice provider.

Clearing

Clearing is a route for applicants that are not placed and holding no offers to find a place on courses with vacancies.

Cycle year

The UCAS application cycle which runs from September to October the following year. For example the 2016 cycle runs from September 2015 through to October 2016.

End of cycle

The point in the cycle to which the numbers in this report refer, and the point at which the cycle is closed such that no more applications or offers can be made, and no more applicants can be placed. Numbers reported at the end of cycle exclude information on a small number of applicants who cancelled during the cycle.

Extra

Applicants who are unsuccessful in obtaining an offer or decline all offers may be eligible to apply through Extra, where they can apply to one further course at a time. Extra operates from 25 February until early July. It provides applicants who are eligible the possibility of obtaining an offer before exam results are published and Clearing starts.

June 30 deadline

The deadline for main scheme applications. Applicants who apply after this date will go directly into Clearing.

Record of Prior Acceptance (RPA)

RPA is an acceptance route used when a provider informs UCAS of applicants it has accepted outside of the normal application process (e.g. individuals who have applied directly to the provider).

Reporting groups

Ethnic group

High level grouping of ethnic origin as declared by the applicant: 'White', 'Black', 'Asian', 'Mixed', 'Other', 'Unknown'. Applicants who declare themselves as 'Unknown' ethnic origin are not reported in these tables, but are included in the associated csv data file.

POLAR3 quintile

Developed by HEFCE, POLAR3 classifies small areas across the UK into five groups according to their level of young participation in Higher Education. Each of these groups represents around 20 per cent of young people and is ranked from Quintile 1 (areas with the lowest young participation rates, considered as the most disadvantaged) to Quintile 5 (highest young participation rates, considered most advantaged). POLAR3 is based on the participation rates of young people between 2005 and 2009 who entered Higher Education between 2005-06 and 2010-11, therefore is most suitable for applicants aged 19 and under. These groups are assigned using the postcode declared by the applicant at the time of their application. If a UK postcode is invalid, considered unsafe for measurement or there is no link to Census geography possible then the applicant is not assigned to a quintile. Applicants with no POLAR3 quintile are not reported.

Sex

Sex as declared by the applicant.

SIMD quintile

Scottish index of multiple deprivation (SIMD) for 2012 identifies small area concentrations of multiple deprivation across all of Scotland, providing a relative measure of deprivation amongst 6505 small areas (data zones) based on 7 socio-economic domains. These small areas are classified into five groups ranked from Quintile 1 (considered the most deprived) to Quintile 5 (considered least deprived), with equal populations in each quintile. Quintiles are assigned using the postcode declared by the applicant, applicants declaring invalid postcodes are classified as 'Not assigned' and are not reported.

SIMD is only defined for applicants domiciled in Scotland, therefore any applicants domiciled outside of Scotland cannot be assigned to an SIMD quintile and so are not reported for this measure.

SIMD is only reported for providers in Scotland. Application and entry rates by SIMD are reported in the 2016 End of Cycle Report and the 2016 cycle January deadline application rate report.

Statistics reported in the tables

All placed applicants

The number of applicants placed for entry into higher education at the provider through one of their choices, including any choices made through Extra, or via Adjustment, Clearing or RPA.

All placed applicants per 10,000 population

The number of total UK domiciled 18 year old placed applicants for entry into higher education at the provider divided by the number of UK 18 year olds in the population, multiplied by 10,000. This gives the number of 18 year olds, for every 10,000 in the population, that were placed at the provider through one of their choices, including any choices made through Extra, or via Adjustment, Clearing or RPA. It is an alternative way of expressing the entry rate to a provider. By referencing the underlying population this statistic shows how the number of placed applicants is changing in relation to the available pool of potential applicants and so gives the chance that somebody from the group will be placed at a provider.

This statistic is only reported for 18 year olds.

Average offer rate

The offer rate that you might expect if the predicted grades and subject choice of applicants were the only factors that influenced whether an applicant was made an offer by the provider. The average offer rate is calculated by dividing applicants according to their specific combination of grades (for A levels the best three predicted grades are used, for BTECs, International Baccalaureate and Scottish Highers and Advanced Highers, predicted grades along with any grades already achieved upon applying are used) and subject choice. For each combination the number of main scheme offers is divided by the number of main scheme applications, to give an overall offer rate. This is then multiplied by the number of applications made by the group for which the average offer rate is being calculated (for example POLAR3 quintile 1), to give an average number of offers for that group. These average number of offers are then added together across all combinations of predicted grade and subject and divided by the number of main scheme applications from the group to give the average offer rate.

The average offer rate does not attempt to control for any other factors that may play a part in the decision to make an offer, such as the subject of the qualifications studied, their relevance to a course, or the grade in each subject; higher numbers of A levels being studied; the exact profile of grades predicted; personal statements; teacher references; interviews; or any other criteria (such as work experience or portfolios) that may be part of the admissions decision.

This statistic is only reported for 18 year olds.

Contribution of group to the average offer rate

The way in which the average offer rate is defined means that the pattern of application and offers of a group (for example POLAR3 quintile 1) will always contribute, in part, to the average offer rate for that group. When this contribution is large, the average offer rate will mainly reflect the patterns for the group, meaning that the value of the average offer rate will be similar to the offer rate, the percentage point difference statistic will be small, and any real difference between the offer rate and what might be expected given the predicted grades and subject choices of the applicants will be difficult to detect.

Values of the contribution of group to the average offer rate range between 0 and 1. The closer the value is to 1 the greater the contribution a group makes to its own average offer rate.

This statistic is only reported for 18 year olds.

Placed June deadline applicants

An applicant who has been placed for entry into higher education at the provider through a June deadline application.

Placed June deadline applicants per 10,000 population

The number of UK domiciled 18 year old placed June deadline applicants at the provider divided by the number of UK 18 year olds in the population, multiplied by 10,000. This gives the number of 18 year olds, for every 10,000 in the population, that were placed at the provider through one of their June deadline applications. It is an alternative way of expressing the entry rate to a provider, but for placed June deadline applicants only. By referencing the underlying population this statistic shows how the number of placed June deadline applicants is changing in relation to the available pool of potential 18 year old applicants and so gives the chance that somebody from the group will be placed at a provider through a June deadline application.

This statistic is only reported for 18 year olds.

June deadline applications

An application (or choice) to a course in higher education to the provider that is made by the June 30 deadline. Each applicant can make up to five choices this way. The number of June deadline applications does not include choices made through the following routes: Clearing, Extra, Adjustment and RPAs. Applications made to October deadline courses received after the October deadline are not included in these statistics.

June deadline applicants

The number of applicants that made at least one application to the provider by the June 30 deadline.

June deadline applicants per 10,000 population

The number of UK domiciled 18 year old June deadline applicants to the provider divided by the number of UK 18 year olds in the population, multiplied by 10,000. This gives the number of 18 year olds, for every 10,000 in the population, who applied by the June 30 deadline. It is equivalent to the application rate. By referencing the underlying population this statistic shows how the number of June deadline applicants is changing in relation to the available pool of potential 18 year old applicants and so gives the chance that somebody from the group will apply to a provider by the June 30 deadline.

This statistic is only reported for 18 year olds.

Offers

An offer is defined as a provider's decision in response to an application to offer a place to an applicant, often subject to the applicant satisfying academic and/or other criteria, via a June deadline application (i.e. does not cover choices made through the following routes: Clearing, Extra, Adjustment and RPAs).

Offer rate

The number of offers made divided by the number of June deadline applications. This gives the proportion of all June deadline applications to the provider that received an offer.

Percentage point difference between offer rate and average offer rate

The offer rate minus the average offer rate.

The percentage point difference can be compared to the expected range of statistical variation resulting from the calculation of the average offer rate using the Average Offer Rate Lookup Table. Where the value of the percentage point difference lies outside of this range, the percentage point difference may be considered to represent a real difference between the offer rate and the average offer rate.

Other definitions

Age

This analysis uses country-specific age definitions that align with the cut off points for school and college cohorts within the different administrations of the UK. For England and Wales, ages are defined on the 31 August, for Northern Ireland on the 1 July and for Scotland on the 28 February the following year. Defining ages in this way matches the assignment of children to school cohorts. For applicants outside of the UK a cohort cut off of 31 August has been used.

Provider

A higher education provider - a university or college.

UK domiciled

Declared area of permanent residence within England, Northern Ireland, Scotland and Wales. Applicants from the Channel Islands and Isle of Man are not included.