

A66 Arts University Bournemouth

Cycle years: 2012 - 2017

Cycle Reference Point: End of Cycle

Applicant coverage: UK domiciled

Reporting groups: Sex, POLAR3, ethnic group

Applicant statistics: June deadline applicants, placed June deadline applicants, all placed applicants, June deadline applicants per 10,000 population, placed June deadline applicants per 10,000 population, all placed applicants per 10,000 population

Application statistics: June deadline applications, offers, offer rate, average offer rate, percentage point difference between offer rate and average offer rate, contribution of group to the average offer rate

Non-disclosure controls: To avoid the disclosure of information about any individual the following measures are taken

- Applicants, placed applicants, applications and offers are rounded to the nearest 5.
- Applicants/placed applicants per 10,000 population figures are reported as 0 if the applicant/placed applicant figures are rounded to 0.
- All statistics related to the offer rate are not reported when the number of applications for a group is less than 10. The percentage point difference between the offer rate and the average offer rate is not reported when the number of applications for a group is less than 50.
- Offer rates are reported as 0% if there are fewer than 5 offers, and 100% if the number of offers is within 5 of the number of applications. When the offer rate is reported as 0% or 100%, it is reported in italics.

Contents:

- 18 year old applicants: P.1
- 18 year old applications: P.2
- 18 year old applicants by sex: P.3
- 18 year old applications by sex: P.4
- 18 year old applicants by POLAR3 quintile: P.7
- 18 year old applications by POLAR3 quintile: P.8
- 18 year old applicants by ethnic group: P.11
- 18 year old applications by ethnic group: P.12
- Applicants (all ages): P.15
- Applications (all ages): P.16
- Applicants (all ages) by sex: P.17
- Applications (all ages) by sex: P.18
- Applicants (all ages) by POLAR3 quintile: P.19
- Applications (all ages) by POLAR3 quintile: P.20
- Applicants (all ages) by ethnic group: P.21
- Applications (all ages) by ethnic group: P.22

P.1 18 year old applicants

Statistic	2012	2013	2014	2015	2016	2017
June deadline applicants	1,910	1,980	2,315	2,735	2,770	2,510
Placed June deadline applicants	300	330	315	435	395	430
All placed applicants	310	330	325	450	400	445
June deadline applicants per 10,000 population	24.7	26.0	30.7	35.7	37.0	33.9
Placed June deadline applicants per 10,000	3.9	4.3	4.2	5.7	5.2	5.8
All placed applicants per 10,000 population	4.0	4.4	4.3	5.9	5.3	6.0

P.2 18 year old applications

Statistic	2012	2013	2014	2015	2016	2017
June deadline applications	1,980	2,030	2,370	2,820	2,835	2,585
Offers	615	760	750	1,080	1,035	1,475
Offer rate	31.2%	37.5%	31.5%	38.3%	36.5%	57.1%

P.3 18 year old applicants by sex

Statistic	Sex	2012	2013	2014	2015	2016	2017
June deadline applicants	Men	600	585	655	755	830	735
	Women	1,310	1,395	1,660	1,980	1,940	1,775
Placed June deadline applicants	Men	90	80	75	115	95	125
	Women	210	250	240	320	295	305
All placed applicants	Men	90	80	80	120	100	130
	Women	215	250	245	330	300	315
June deadline applicants per 10,000 population	Men	15.1	15.0	17.0	19.3	21.6	19.4
	Women	34.7	37.6	45.3	53.0	53.1	49.1
Placed June deadline applicants per 10,000 population	Men	2.2	2.0	1.9	3.0	2.5	3.3
	Women	5.6	6.8	6.6	8.6	8.1	8.4
All placed applicants per 10,000 population	Men	2.3	2.0	2.0	3.1	2.6	3.4
	Women	5.8	6.8	6.7	8.8	8.2	8.7

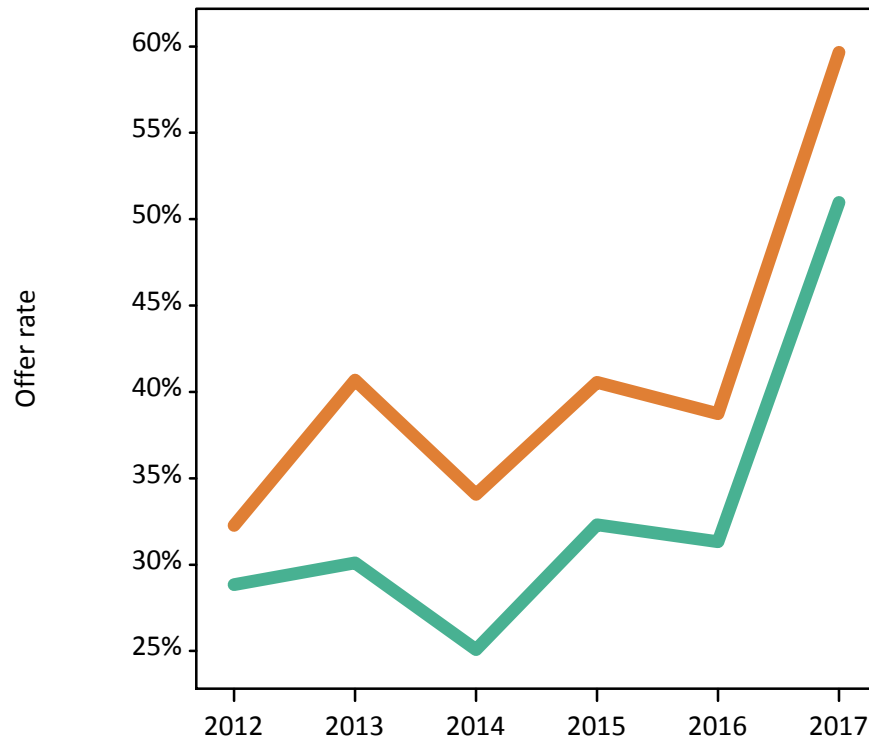
P.4 18 year old applications by sex

Statistic	Sex	2012	2013	2014	2015	2016	2017
June deadline applications	Men	625	610	665	785	845	770
	Women	1,355	1,425	1,705	2,040	1,990	1,815
Offers	Men	180	185	165	255	265	390
	Women	435	580	580	825	770	1,085
Offer rate	Men	28.8%	30.1%	25.1%	32.3%	31.3%	51.0%
	Women	32.3%	40.7%	34.1%	40.6%	38.7%	59.7%
Average offer rate	Men	29.4%	35.6%	30.4%	38.7%	35.4%	57.2%
	Women	32.0%	38.3%	32.0%	38.1%	37.0%	57.0%
Percentage point difference between offer rate and average offer rate	Men	-0.5	-5.5	-5.3	-6.4	-4.1	-6.2
	Women	0.3	2.4	2.1	2.4	1.7	2.6
Contribution of group to the average offer rate	Men	0.426	0.451	0.399	0.395	0.428	0.434
	Women	0.735	0.765	0.765	0.768	0.757	0.760

P.5 18 year old offer rate by sex

Note: The line for a group is not plotted when that group made fewer than 10 applications in any of the years from 2012-2017.

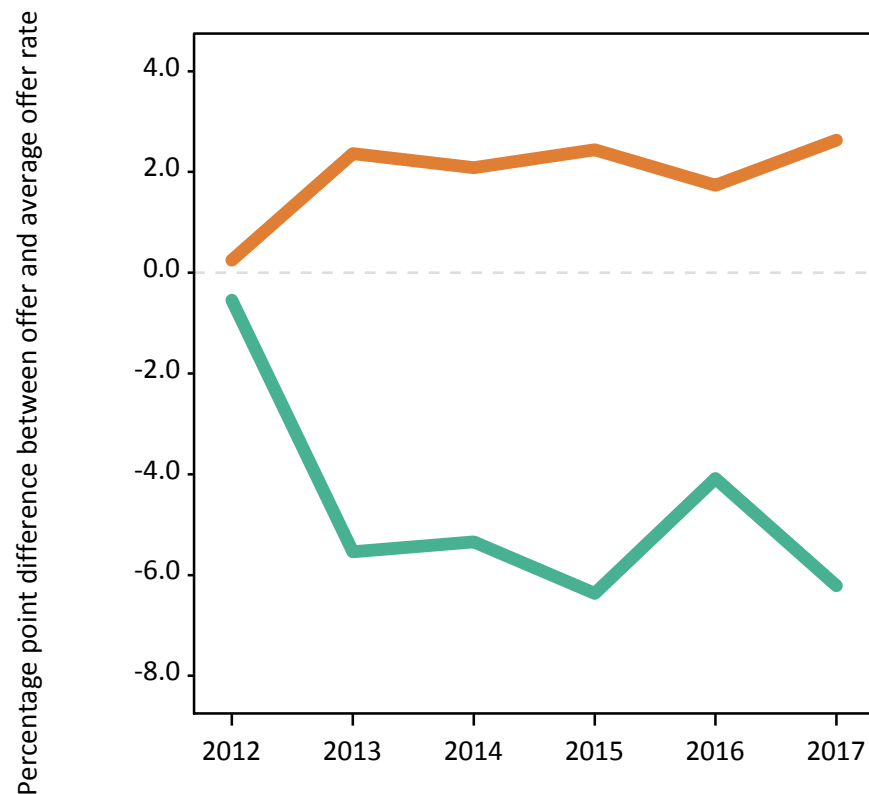
Men
Women



P.6 Percentage point difference between 18 year old offer rate and average offer rate by sex

Note: The line for a group is not plotted when that group made fewer than 50 applications in any of the years from 2012-2017.

Men
Women



P.7 18 year old applicants by POLAR3 quintile

Statistic	POLAR3 quintile	2012	2013	2014	2015	2016	2017
June deadline applicants	Quintile 1	215	210	215	305	280	265
	Quintile 2	295	305	400	415	435	410
	Quintile 3	375	380	435	605	550	475
	Quintile 4	500	510	605	660	690	620
	Quintile 5	525	570	660	745	810	730
Placed June deadline applicants	Quintile 1	20	30	35	40	30	40
	Quintile 2	40	55	40	55	55	55
	Quintile 3	65	65	45	105	80	85
	Quintile 4	85	90	90	105	110	120
	Quintile 5	95	95	105	135	125	125
All placed applicants	Quintile 1	25	30	35	40	30	45
	Quintile 2	40	55	45	55	55	60
	Quintile 3	65	65	45	105	80	90
	Quintile 4	85	90	95	110	110	125
	Quintile 5	100	95	110	135	125	125
June deadline applicants per 10,000 population	Quintile 1	15.0	15.0	15.5	21.8	20.6	19.9
	Quintile 2	19.7	20.6	27.3	27.9	30.2	29.0
	Quintile 3	24.2	25.0	29.0	39.3	36.6	32.0
	Quintile 4	31.4	32.6	39.2	42.2	44.7	40.7
	Quintile 5	31.3	34.5	40.3	44.6	49.1	44.3
Placed June deadline applicants per 10,000 population	Quintile 1	1.3	2.1	2.4	2.9	2.1	3.2
	Quintile 2	2.5	3.7	2.9	3.8	3.7	3.9
	Quintile 3	4.1	4.1	3.1	6.7	5.2	5.8
	Quintile 4	5.3	5.6	5.8	6.7	7.1	8.0
	Quintile 5	5.7	5.9	6.4	7.9	7.4	7.5
All placed applicants per 10,000 population	Quintile 1	1.6	2.1	2.4	3.0	2.3	3.3
	Quintile 2	2.5	3.7	3.0	3.8	3.7	4.1
	Quintile 3	4.1	4.2	3.1	6.8	5.4	6.0
	Quintile 4	5.4	5.6	6.0	7.1	7.2	8.2
	Quintile 5	5.8	5.9	6.6	8.1	7.4	7.6

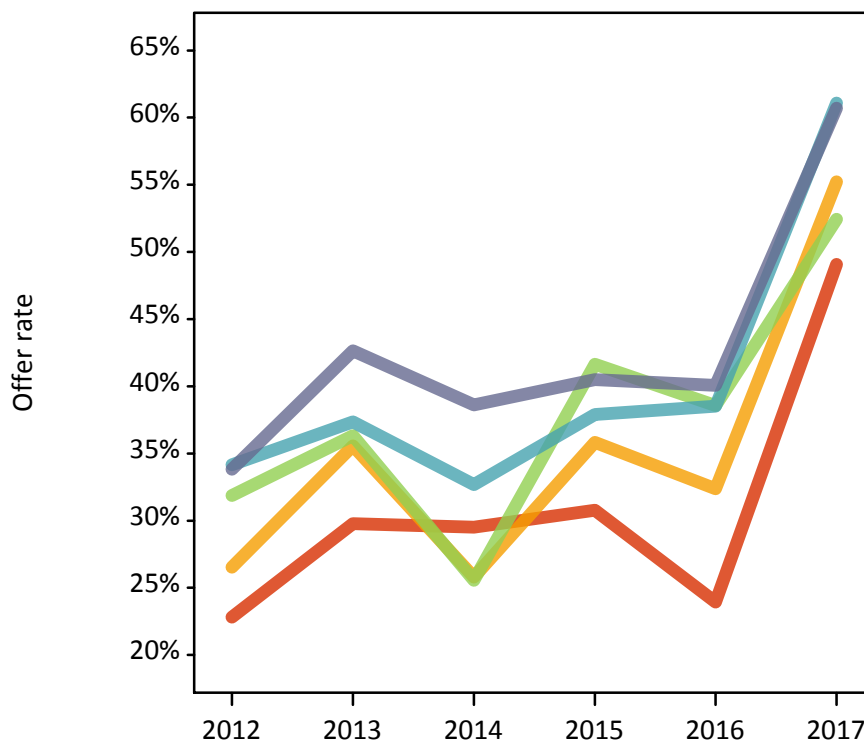
P.8 18 year old applications by POLAR3 quintile

Statistic	POLAR3 quintile	2012	2013	2014	2015	2016	2017
June deadline applications	Quintile 1	220	215	225	310	285	275
	Quintile 2	310	310	405	425	450	420
	Quintile 3	385	390	450	615	570	490
	Quintile 4	520	520	615	685	705	640
	Quintile 5	540	585	675	775	825	755
Offers	Quintile 1	50	65	65	95	70	135
	Quintile 2	80	110	105	155	145	235
	Quintile 3	125	140	115	255	220	260
	Quintile 4	180	195	200	260	270	390
	Quintile 5	185	250	260	315	330	455
Offer rate	Quintile 1	22.8%	29.8%	29.5%	30.8%	23.9%	49.1%
	Quintile 2	26.5%	35.6%	25.8%	35.8%	32.4%	55.2%
	Quintile 3	31.9%	36.3%	25.6%	41.7%	38.6%	52.4%
	Quintile 4	34.2%	37.4%	32.7%	37.9%	38.5%	61.1%
	Quintile 5	33.8%	42.6%	38.6%	40.5%	40.1%	60.7%
Average offer rate	Quintile 1	30.6%	37.5%	29.0%	35.9%	31.3%	56.7%
	Quintile 2	30.7%	37.4%	29.9%	37.4%	34.5%	57.0%
	Quintile 3	31.5%	36.4%	30.3%	38.4%	38.6%	54.3%
	Quintile 4	31.1%	37.2%	32.9%	38.8%	37.1%	57.9%
	Quintile 5	31.5%	38.9%	33.0%	39.3%	37.5%	58.4%
Percentage point difference between offer rate and average offer rate	Quintile 1	-7.8	-7.8	0.5	-5.1	-7.4	-7.6
	Quintile 2	-4.2	-1.8	-4.1	-1.6	-2.1	-1.8
	Quintile 3	0.4	-0.1	-4.8	3.3	-0.0	-1.9
	Quintile 4	3.1	0.2	-0.2	-0.9	1.4	3.2
	Quintile 5	2.4	3.7	5.6	1.1	2.5	2.3
Contribution of group to the average offer rate	Quintile 1	0.165	0.165	0.145	0.155	0.148	0.167
	Quintile 2	0.211	0.202	0.216	0.197	0.204	0.233
	Quintile 3	0.239	0.235	0.236	0.268	0.249	0.259
	Quintile 4	0.311	0.292	0.292	0.282	0.288	0.315
	Quintile 5	0.337	0.345	0.329	0.328	0.345	0.346

P.9 18 year old offer rate by POLAR3 quintile

Note: The line for a group is not plotted when that group made fewer than 10 applications in any of the years from 2012-2017.

- Quintile 1
- Quintile 2
- Quintile 3
- Quintile 4
- Quintile 5



P.10 Percentage point difference between 18 year old offer rate and average offer rate by POLAR3 quintile

Note: The line for a group is not plotted when that group made fewer than 50 applications in any of the years from 2012-2017.

- Quintile 1
- Quintile 2
- Quintile 3
- Quintile 4
- Quintile 5



P.11 18 year old applicants by ethnic group

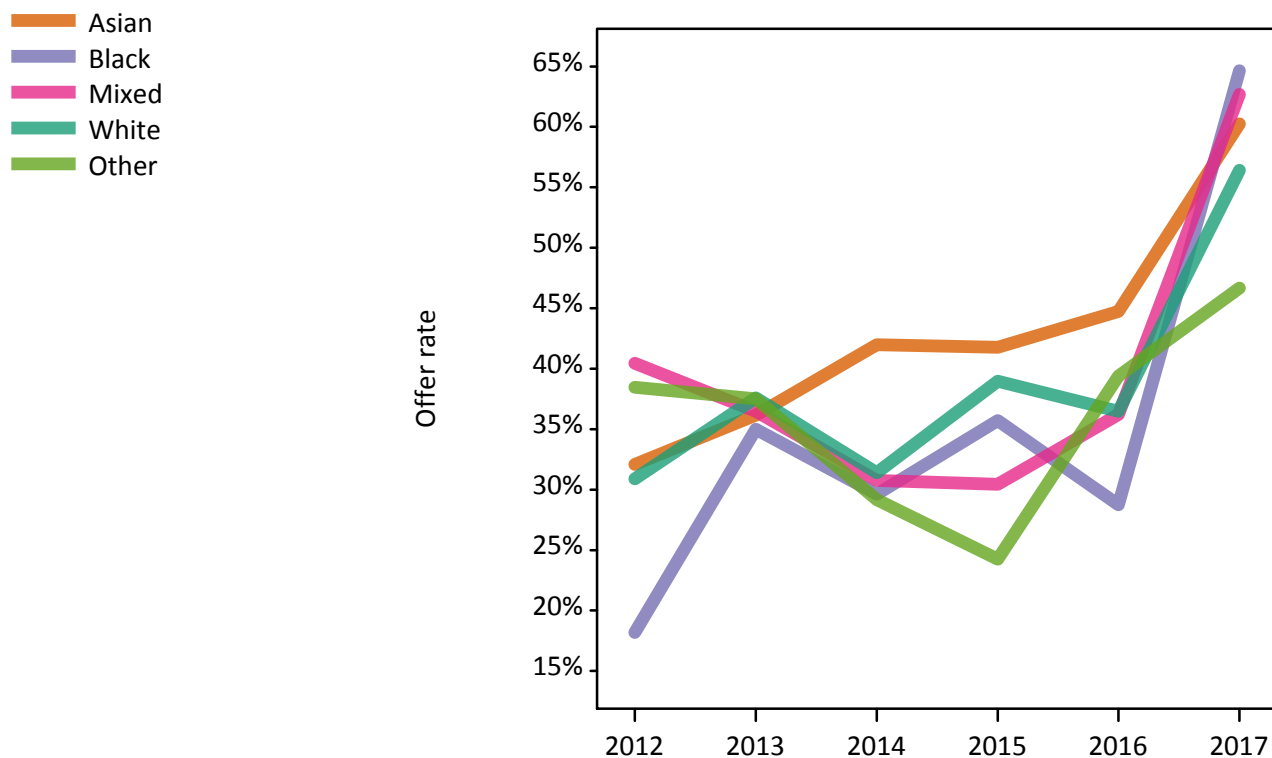
Statistic	Ethnic group	2012	2013	2014	2015	2016	2017
June deadline applicants	Asian	50	45	80	75	75	85
	Black	55	60	80	100	80	80
	Mixed	90	85	100	135	125	125
	White	1,695	1,770	2,020	2,385	2,445	2,185
	Other	10	15	25	35	35	30
Placed June deadline applicants	Asian	5	10	15	10	15	10
	Black	10	5	10	10	5	15
	Mixed	20	15	10	15	25	25
	White	265	295	275	390	345	370
	Other	0	0	5	5	5	5
All placed applicants	Asian	5	10	15	10	15	10
	Black	10	5	10	10	10	20
	Mixed	20	15	10	15	25	25
	White	275	300	280	405	345	380
	Other	0	0	5	5	5	5
June deadline applicants per 10,000 population	Asian	8.0	7.1	11.5	10.9	10.6	11.3
	Black	19.2	19.9	26.7	30.8	25.6	25.7
	Mixed	33.8	31.1	35.5	44.4	39.7	38.6
	White	26.2	28.1	32.7	38.3	40.4	36.8
	Other	13.6	16.5	25.8	34.2	33.2	27.2
Placed June deadline applicants per 10,000 population	Asian	0.8	1.4	2.4	1.6	1.9	1.6
	Black	3.2	2.4	3.6	3.8	2.2	5.4
	Mixed	6.9	5.5	4.2	5.5	7.3	7.8
	White	4.1	4.7	4.4	6.3	5.7	6.2
	Other	0.0	0.0	3.2	4.1	6.0	2.9
All placed applicants per 10,000 population	Asian	0.8	1.4	2.4	1.6	2.1	1.6
	Black	3.2	2.4	3.6	3.8	2.6	5.7
	Mixed	6.9	5.5	4.2	5.5	7.3	8.1
	White	4.2	4.7	4.6	6.5	5.7	6.4
	Other	0.0	0.0	4.3	4.1	6.0	2.9

P.12 18 year old applications by ethnic group

Statistic	Ethnic group	2012	2013	2014	2015	2016	2017
June deadline applications	Asian	55	45	80	80	75	85
	Black	55	60	80	100	80	80
	Mixed	90	85	105	140	125	125
	White	1,760	1,820	2,070	2,465	2,510	2,255
	Other	15	15	25	35	35	30
Offers	Asian	15	15	35	35	35	50
	Black	10	20	25	35	25	55
	Mixed	35	30	30	40	45	80
	White	545	685	650	960	915	1,270
	Other	5	5	5	10	15	15
Offer rate	Asian	32.1%	36.2%	42.0%	41.8%	44.7%	60.2%
	Black	18.2%	35.0%	29.6%	35.7%	28.8%	64.6%
	Mixed	40.4%	36.5%	30.8%	30.4%	36.2%	62.7%
	White	30.9%	37.6%	31.4%	39.0%	36.5%	56.4%
	Other	38.5%	37.5%	29.2%	24.2%	39.4%	46.7%
Average offer rate	Asian	37.7%	37.8%	37.0%	44.3%	47.2%	62.2%
	Black	29.2%	34.9%	31.7%	34.5%	39.1%	52.4%
	Mixed	36.9%	35.3%	35.0%	38.4%	33.8%	61.1%
	White	30.7%	37.7%	31.1%	38.2%	36.2%	56.8%
	Other	39.8%	37.1%	32.9%	40.6%	39.4%	53.9%
Percentage point difference between offer rate and average offer rate	Asian	-5.6	N/A	5.0	-2.6	-2.5	-1.9
	Black	-11.0	0.1	-2.1	1.2	-10.4	12.2
	Mixed	3.5	1.1	-4.2	-8.0	2.4	1.6
	White	0.2	-0.1	0.2	0.8	0.2	-0.4
	Other	N/A	N/A	N/A	N/A	N/A	N/A
Contribution of group to the average offer rate	Asian	0.105	0.095	0.100	0.105	0.112	0.130
	Black	0.080	0.095	0.090	0.091	0.117	0.106
	Mixed	0.128	0.089	0.084	0.112	0.105	0.111
	White	0.900	0.902	0.882	0.883	0.894	0.884
	Other	0.102	0.035	0.054	0.099	0.090	0.161

P.13 18 year old offer rate by ethnic group

Note: The line for a group is not plotted when that group made fewer than 10 applications in any of the years from 2012-2017.



P.14 Percentage point difference between 18 year old offer rate and average offer rate by ethnic group

Note: The line for a group is not plotted when that group made fewer than 50 applications in any of the years from 2012-2017.



P.15 Applicants (all ages)

Statistic	2012	2013	2014	2015	2016	2017
June deadline applicants	4,490	4,760	5,475	5,935	5,910	5,330
Placed June deadline applicants	805	960	830	1,075	985	1,095
All placed applicants	835	965	860	1,100	1,010	1,135

P.16 Applications (all ages)

Statistic	2012	2013	2014	2015	2016	2017
June deadline applications	4,695	4,900	5,640	6,140	6,115	5,545
Offers	1,705	2,025	1,895	2,455	2,445	3,110
Offer rate	36.3%	41.3%	33.6%	39.9%	39.9%	56.1%

P.17 Applicants (all ages) by sex

Statistic	Sex	2012	2013	2014	2015	2016	2017
June deadline applicants	Men	1,510	1,515	1,635	1,725	1,785	1,545
	Women	2,980	3,250	3,840	4,205	4,125	3,785
Placed June deadline applicants	Men	265	270	230	300	285	335
	Women	540	695	600	775	700	760
All placed applicants	Men	275	270	240	310	295	350
	Women	560	695	620	790	720	785

P.18 Applications (all ages) by sex

Statistic	Sex	2012	2013	2014	2015	2016	2017
June deadline applications	Men	1,590	1,565	1,690	1,795	1,865	1,615
	Women	3,105	3,335	3,950	4,345	4,250	3,925
Offers	Men	535	555	455	600	640	825
	Women	1,175	1,470	1,440	1,855	1,800	2,280
Offer rate	Men	33.5%	35.4%	26.8%	33.3%	34.4%	51.2%
	Women	37.8%	44.0%	36.5%	42.7%	42.4%	58.1%

P.19 Applicants (all ages) by POLAR3 quintile

Statistic	POLAR3 quintile	2012	2013	2014	2015	2016	2017
June deadline applicants	Quintile 1	525	525	565	680	690	610
	Quintile 2	715	730	935	940	900	840
	Quintile 3	870	940	1,060	1,265	1,170	1,065
	Quintile 4	1,135	1,165	1,355	1,435	1,430	1,295
	Quintile 5	1,235	1,395	1,550	1,605	1,710	1,505
Placed June deadline applicants	Quintile 1	75	95	95	100	90	120
	Quintile 2	115	155	115	165	115	145
	Quintile 3	155	195	145	235	210	230
	Quintile 4	215	230	205	255	260	285
	Quintile 5	240	285	260	320	315	315
All placed applicants	Quintile 1	80	95	95	105	90	120
	Quintile 2	120	160	120	165	115	150
	Quintile 3	160	195	150	240	215	245
	Quintile 4	220	230	215	265	265	290
	Quintile 5	250	285	270	330	320	325

P.20 Applications (all ages) by POLAR3 quintile

Statistic	POLAR3 quintile	2012	2013	2014	2015	2016	2017
June deadline applications	Quintile 1	550	540	590	705	725	640
	Quintile 2	755	755	955	975	930	870
	Quintile 3	910	970	1,090	1,300	1,220	1,115
	Quintile 4	1,190	1,200	1,395	1,485	1,475	1,340
	Quintile 5	1,280	1,430	1,600	1,665	1,755	1,555
Offers	Quintile 1	160	185	180	225	190	305
	Quintile 2	235	300	275	380	340	450
	Quintile 3	335	390	330	540	485	600
	Quintile 4	455	505	480	590	625	785
	Quintile 5	520	645	625	715	800	960
Offer rate	Quintile 1	28.7%	34.1%	30.3%	31.9%	26.1%	47.3%
	Quintile 2	31.3%	39.9%	28.6%	38.8%	36.3%	52.0%
	Quintile 3	36.8%	40.0%	30.2%	41.5%	40.0%	53.9%
	Quintile 4	38.2%	42.1%	34.6%	39.8%	42.3%	58.4%
	Quintile 5	40.7%	45.0%	39.0%	43.1%	45.6%	61.6%

P.21 Applicants (all ages) by ethnic group

Statistic	Ethnic group	2012	2013	2014	2015	2016	2017
June deadline applicants	Asian	140	140	205	200	215	190
	Black	140	140	205	205	185	150
	Mixed	215	230	280	305	300	285
	White	3,930	4,180	4,705	5,140	5,115	4,615
	Other	45	50	55	60	70	55
Placed June deadline applicants	Asian	25	30	30	30	40	30
	Black	20	20	30	30	20	30
	Mixed	40	40	45	40	50	60
	White	710	855	715	965	865	960
	Other	10	10	10	5	10	10
All placed applicants	Asian	25	30	30	35	40	35
	Black	20	20	30	30	20	30
	Mixed	40	40	50	45	55	60
	White	735	860	735	985	885	990
	Other	10	10	10	5	10	10

P.22 Applications (all ages) by ethnic group

Statistic	Ethnic group	2012	2013	2014	2015	2016	2017
June deadline applications	Asian	140	145	210	205	230	195
	Black	145	140	210	205	190	150
	Mixed	220	235	290	310	305	295
	White	4,110	4,310	4,850	5,330	5,300	4,810
	Other	50	50	55	60	75	60
Offers	Asian	50	60	80	90	105	105
	Black	35	50	60	70	55	75
	Mixed	90	95	105	105	120	160
	White	1,505	1,780	1,630	2,160	2,125	2,715
	Other	15	25	15	20	25	30
Offer rate	Asian	35.5%	42.4%	37.1%	43.7%	46.1%	54.4%
	Black	25.2%	35.0%	28.2%	34.1%	29.8%	48.7%
	Mixed	39.8%	41.2%	35.3%	34.1%	40.0%	55.1%
	White	36.6%	41.3%	33.6%	40.5%	40.1%	56.5%
	Other	32.7%	50.0%	31.5%	32.2%	37.0%	48.3%

Technical Notes and Definitions

UCAS undergraduate scheme

Adjustment

Adjustment allows applicants who have met and exceeded the terms of their conditional firm offer to seek and find a place at another provider whilst keeping their place at their original firm choice provider.

Clearing

Clearing is a route for applicants that are not placed and holding no offers to find a place on courses with vacancies.

Cycle year

The UCAS application cycle which runs from September to October the following year. For example the 2017 cycle runs from September 2016 through to October 2017.

End of cycle

The point in the cycle to which the numbers in this report refer, and the point at which the cycle is closed such that no more applications or offers can be made, and no more applicants can be placed. Numbers reported at the end of cycle exclude information on a small number of applicants who cancelled during the cycle.

Extra

Applicants who are unsuccessful in obtaining an offer or decline all offers may be eligible to apply through Extra, where they can apply to one further course at a time. Extra operates from 25 February until early July. It provides applicants who are eligible the possibility of obtaining an offer before exam results are published and Clearing starts.

June 30 deadline

The deadline for main scheme applications. Applicants who apply after this date will go directly into Clearing.

Record of Prior Acceptance (RPA)

RPA is an acceptance route used when a provider informs UCAS of applicants it has accepted outside of the normal application process (e.g. individuals who have applied directly to the provider).

Reporting groups

Ethnic group

High level grouping of ethnic origin as declared by the applicant: 'White', 'Black', 'Asian', 'Mixed', 'Other', 'Unknown'. Applicants who declare themselves as 'Unknown' ethnic origin are not reported in these tables, but are included in the associated csv data file.

POLAR3 quintile

Developed by HEFCE, POLAR3 classifies small areas across the UK into five groups according to their level of young participation in Higher Education. Each of these groups represents around 20 per cent of young people and is ranked from Quintile 1 (areas with the lowest young participation rates, considered as the most disadvantaged) to Quintile 5 (highest young participation rates, considered most advantaged). POLAR3 is based on the participation rates of young people between 2005 and 2009 who entered Higher Education between 2005-06 and 2010-11, therefore is most suitable for applicants aged 19 and under. These groups are assigned using the postcode declared by the applicant at the time of their application. If a UK postcode is invalid, considered unsafe for measurement or there is no link to Census geography possible then the applicant is not assigned to a quintile. Applicants with no POLAR3 quintile are not reported.

Sex

Sex as declared by the applicant.

SIMD 2016 quintile

Scottish index of multiple deprivation (SIMD) identifies small area concentrations of multiple deprivation across all of Scotland, providing a relative measure of deprivation amongst 6505 small areas (data zones) based on 7 socio-economic domains. These small areas are classified into five groups ranked from Quintile 1 (considered the most deprived) to Quintile 5 (considered least deprived), with equal populations in each quintile. Quintiles are assigned using the postcode declared by the applicant, applicants declaring invalid postcodes are classified as 'Not assigned' and are not reported.

SIMD is only defined for applicants domiciled in Scotland, therefore any applicants domiciled outside of Scotland cannot be assigned to an SIMD quintile and so are not reported for this measure.

SIMD is only reported for providers in Scotland. Application and entry rates by SIMD are reported in the 2017 End of Cycle Report and the 2017 cycle January deadline application rate report.

Statistics reported in the tables

All placed applicants

The number of applicants placed for entry into higher education at the provider through one of their choices, including any choices made through Extra, or via Adjustment, Clearing or RPA.

All placed applicants per 10,000 population

The number of total UK domiciled 18 year old placed applicants for entry into higher education at the provider divided by the number of UK 18 year olds in the population, multiplied by 10,000. This gives the number of 18 year olds, for every 10,000 in the population, that were placed at the provider through one of their choices, including any choices made through Extra, or via Adjustment, Clearing or RPA. It is an alternative way of expressing the entry rate to a provider. By referencing the underlying population this statistic shows how the number of placed applicants is changing in relation to the available pool of potential applicants and so gives the chance that somebody from the group will be placed at a provider.

This statistic is only reported for 18 year olds.

Average offer rate

The offer rate that you might expect if the predicted grades and subject choice of applicants were the only factors that influenced whether an applicant was made an offer by the provider. The average offer rate is calculated by dividing applicants according to their specific combination of grades (for A levels the best three predicted grades are used, for BTECs, International Baccalaureate and Scottish Highers and Advanced Highers, predicted grades along with any grades already achieved upon applying are used) and subject choice. For each combination the number of main scheme offers is divided by the number of main scheme applications, to give an overall offer rate. This is then multiplied by the number of applications made by the group for which the average offer rate is being calculated (for example POLAR3 quintile 1), to give an average number of offers for that group. These average number of offers are then added together across all combinations of predicted grade and subject and divided by the number of main scheme applications from the group to give the average offer rate.

The average offer rate does not attempt to control for any other factors that may play a part in the decision to make an offer, such as the subject of the qualifications studied, their relevance to a course, or the grade in each subject; higher numbers of A levels being studied; the exact profile of grades predicted; personal statements; teacher references; interviews; or any other criteria (such as work experience or portfolios) that may be part of the admissions decision.

This statistic is only reported for 18 year olds.

Contribution of group to the average offer rate

The way in which the average offer rate is defined means that the pattern of application and offers of a group (for example POLAR3 quintile 1) will always contribute, in part, to the average offer rate for that group. When this contribution is large, the average offer rate will mainly reflect the patterns for the group, meaning that the value of the average offer rate will be similar to the offer rate, the percentage point difference statistic will be small, and any real difference between the offer rate and what might be expected given the predicted grades and subject choices of the applicants will be difficult to detect.

Values of the contribution of group to the average offer rate range between 0 and 1. The closer the value is to 1 the greater the contribution a group makes to its own average offer rate.

This statistic is only reported for 18 year olds.

Placed June deadline applicants

An applicant who has been placed for entry into higher education at the provider through a June deadline application.

Placed June deadline applicants per 10,000 population

The number of UK domiciled 18 year old placed June deadline applicants at the provider divided by the number of UK 18 year olds in the population, multiplied by 10,000. This gives the number of 18 year olds, for every 10,000 in the population, that were placed at the provider through one of their June deadline applications. It is an alternative way of expressing the entry rate to a provider, but for placed June deadline applicants only. By referencing the underlying population this statistic shows how the number of placed June deadline applicants is changing in relation to the available pool of potential 18 year old applicants and so gives the chance that somebody from the group will be placed at a provider through a June deadline application.

This statistic is only reported for 18 year olds.

June deadline applications

An application (or choice) to a course in higher education to the provider that is made by the June 30 deadline. Each applicant can make up to five choices this way. The number of June deadline applications does not include choices made through the following routes: Clearing, Extra, Adjustment and RPAs. Applications made to October deadline courses received after the October deadline are not included in these statistics.

June deadline applicants

The number of applicants that made at least one application to the provider by the June 30 deadline.

June deadline applicants per 10,000 population

The number of UK domiciled 18 year old June deadline applicants to the provider divided by the number of UK 18 year olds in the population, multiplied by 10,000. This gives the number of 18 year olds, for every 10,000 in the population, who applied by the June 30 deadline. It is equivalent to the application rate. By referencing the underlying population this statistic shows how the number of June deadline applicants is changing in relation to the available pool of potential 18 year old applicants and so gives the chance that somebody from the group will apply to a provider by the June 30 deadline.

This statistic is only reported for 18 year olds.

Offers

An offer is defined as a provider's decision in response to an application to offer a place to an applicant, often subject to the applicant satisfying academic and/or other criteria, via a June deadline application (i.e. does not cover choices made through the following routes: Clearing, Extra, Adjustment and RPAs).

Offer rate

The number of offers made divided by the number of June deadline applications. This gives the proportion of all June deadline applications to the provider that received an offer.

Percentage point difference between offer rate and average offer rate

The offer rate minus the average offer rate.

The percentage point difference can be compared to the expected range of statistical variation resulting from the calculation of the average offer rate using the Average Offer Rate Lookup Table. Where the value of the percentage point difference lies outside of this range, the percentage point difference may be considered to represent a real difference between the offer rate and the average offer rate.

Other definitions

Age

This analysis uses country-specific age definitions that align with the cut off points for school and college cohorts within the different administrations of the UK. For England and Wales, ages are defined on the 31 August, for Northern Ireland on the 1 July and for Scotland on the 28 February the following year. Defining ages in this way matches the assignment of children to school cohorts. For applicants outside of the UK a cohort cut off of 31 August has been used. Numbers for applicants aged 17 and under are included in the tables that report numbers for all age groups. Providers in Scotland typically receive a higher proportion of applicants aged 17 and under compared to providers elsewhere in the UK.

Provider

A higher education provider - a university or college.

UK domiciled

Declared area of permanent residence within England, Northern Ireland, Scotland and Wales. Applicants from the Channel Islands and Isle of Man are not included.