

G28 University of Glasgow

Cycle years: 2012 - 2017

Cycle Reference Point: End of Cycle

Applicant coverage: UK domiciled

Reporting groups: Sex, POLAR3, SIMD 2016, ethnic group

Applicant statistics: June deadline applicants, placed June deadline applicants, all placed applicants, June deadline applicants per 10,000 population, placed June deadline applicants per 10,000 population, all placed applicants per 10,000 population

Application statistics: June deadline applications, offers, offer rate, average offer rate, percentage point difference between offer rate and average offer rate, contribution of group to the average offer rate

Non-disclosure controls: To avoid the disclosure of information about any individual the following measures are taken

- Applicants, placed applicants, applications and offers are rounded to the nearest 5.
- Applicants/placed applicants per 10,000 population figures are reported as 0 if the applicant/placed applicant figures are rounded to 0.
- All statistics related to the offer rate are not reported when the number of applications for a group is less than 10. The percentage point difference between the offer rate and the average offer rate is not reported when the number of applications for a group is less than 50.
- Offer rates are reported as 0% if there are fewer than 5 offers, and 100% if the number of offers is within 5 of the number of applications. When the offer rate is reported as 0% or 100%, it is reported in italics.

Contents:

18 year old applicants:	P.1
18 year old applications:	P.2
18 year old applicants by sex:	P.3
18 year old applications by sex:	P.4
18 year old applicants by POLAR3 quintile:	P.7
18 year old applications by POLAR3 quintile:	P.8
18 year old, Scotland domiciled applicants by SIMD 2016 quintile:	P.11
18 year old, Scotland domiciled applications by SIMD 2016 quintile:	P.12
18 year old applicants by ethnic group:	P.15
18 year old applications by ethnic group:	P.16
Applicants (all ages):	P.19
Applications (all ages):	P.20
Applicants (all ages) by sex:	P.21
Applications (all ages) by sex:	P.22
Applicants (all ages) by POLAR3 quintile:	P.23
Applications (all ages) by POLAR3 quintile:	P.24
Scotland domiciled applicants (all ages) by SIMD 2016 quintile:	P.25
Scotland domiciled applications (all ages) by SIMD 2016 quintile:	P.26
Applicants (all ages) by ethnic group:	P.27
Applications (all ages) by ethnic group:	P.28

P.1 18 year old applicants

Statistic	2012	2013	2014	2015	2016	2017
June deadline applicants	11,510	13,195	10,415	10,385	10,870	11,600
Placed June deadline applicants	1,940	2,445	2,055	2,350	2,335	2,380
All placed applicants	2,015	2,545	2,245	2,430	2,455	2,520
June deadline applicants per 10,000 population	148.8	173.4	138.3	135.5	145.0	156.6
Placed June deadline applicants per 10,000	25.1	32.1	27.3	30.7	31.1	32.1
All placed applicants per 10,000 population	26.1	33.4	29.8	31.7	32.8	34.0

P.2 18 year old applications

Statistic	2012	2013	2014	2015	2016	2017
June deadline applications	14,485	16,480	12,710	12,455	12,980	13,825
Offers	8,740	10,290	8,785	9,260	9,270	9,860
Offer rate	60.3%	62.4%	69.1%	74.3%	71.4%	71.3%

P.3 18 year old applicants by sex

Statistic	Sex	2012	2013	2014	2015	2016	2017
June deadline applicants	Men	4,980	5,655	4,195	4,400	4,450	4,740
	Women	6,530	7,545	6,220	5,985	6,420	6,860
Placed June deadline applicants	Men	805	995	780	975	920	930
	Women	1,135	1,450	1,275	1,375	1,410	1,450
All placed applicants	Men	840	1,035	850	1,005	985	965
	Women	1,175	1,510	1,395	1,430	1,470	1,555
June deadline applicants per 10,000 population	Men	125.5	144.8	108.4	112.1	115.8	124.7
	Women	173.2	203.6	169.9	160.1	175.8	190.0
Placed June deadline applicants per 10,000 population	Men	20.3	25.5	20.1	24.8	24.0	24.4
	Women	30.2	39.1	34.8	36.8	38.6	40.2
All placed applicants per 10,000 population	Men	21.2	26.5	21.9	25.6	25.7	25.5
	Women	31.1	40.7	38.2	38.2	40.3	43.0

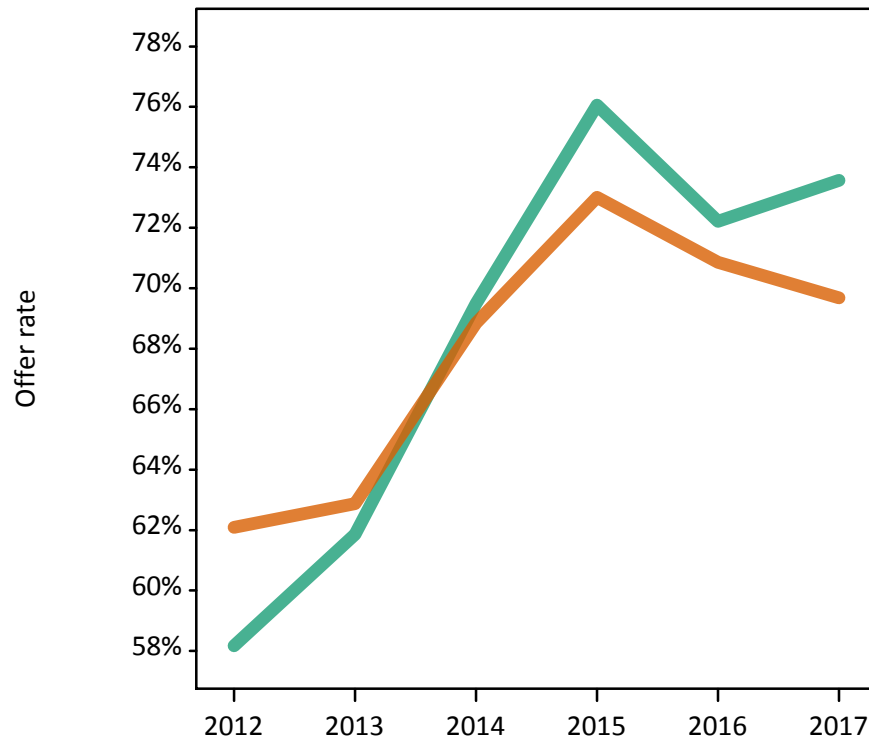
P.4 18 year old applications by sex

Statistic	Sex	2012	2013	2014	2015	2016	2017
June deadline applications	Men	6,515	7,305	5,250	5,395	5,400	5,805
	Women	7,970	9,175	7,465	7,060	7,575	8,025
Offers	Men	3,790	4,520	3,645	4,105	3,900	4,270
	Women	4,950	5,770	5,140	5,155	5,370	5,590
Offer rate	Men	58.2%	61.9%	69.5%	76.1%	72.2%	73.6%
	Women	62.1%	62.9%	68.9%	73.0%	70.9%	69.7%
Average offer rate	Men	59.7%	63.2%	71.1%	77.6%	73.2%	75.1%
	Women	60.9%	61.8%	67.7%	71.8%	70.1%	68.6%
Percentage point difference between offer rate and average offer rate	Men	-1.5	-1.3	-1.6	-1.5	-1.0	-1.5
	Women	1.2	1.1	1.2	1.2	0.7	1.1
Contribution of group to the average offer rate	Men	0.593	0.582	0.561	0.585	0.568	0.582
	Women	0.668	0.667	0.691	0.683	0.692	0.697

P.5 18 year old offer rate by sex

Note: The line for a group is not plotted when that group made fewer than 10 applications in any of the years from 2012-2017.

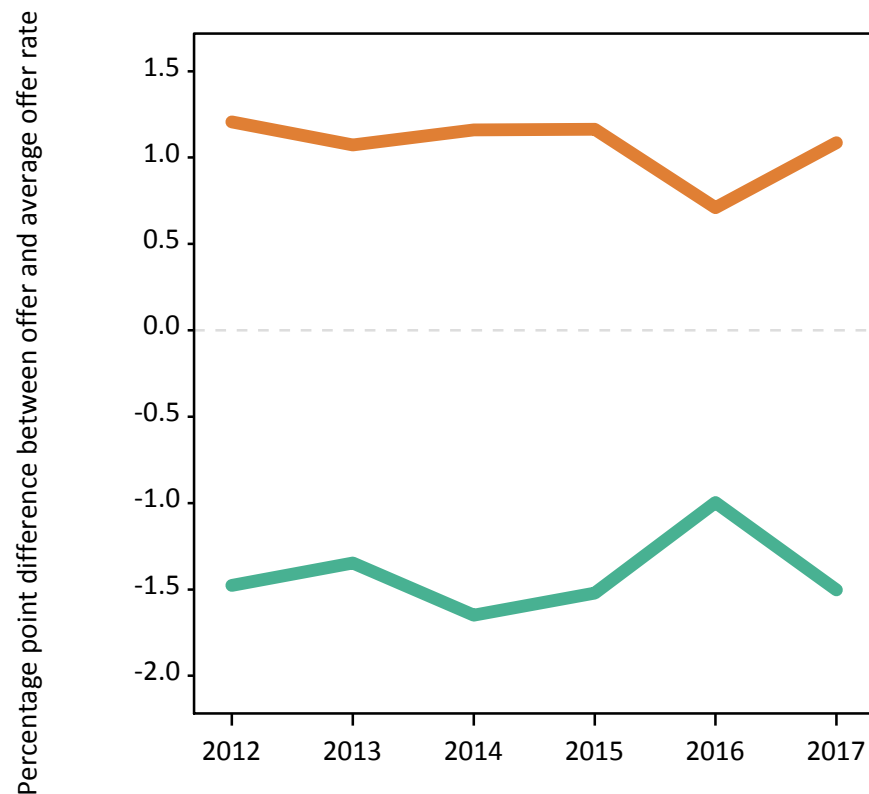
Men
Women



P.6 Percentage point difference between 18 year old offer rate and average offer rate by sex

Note: The line for a group is not plotted when that group made fewer than 50 applications in any of the years from 2012-2017.

Men
Women



P.7 18 year old applicants by POLAR3 quintile

Statistic	POLAR3 quintile	2012	2013	2014	2015	2016	2017
June deadline applicants	Quintile 1	455	570	490	510	525	620
	Quintile 2	1,085	1,305	1,020	1,075	1,190	1,175
	Quintile 3	1,740	1,995	1,510	1,475	1,615	1,755
	Quintile 4	2,705	3,075	2,435	2,460	2,560	2,700
	Quintile 5	5,510	6,225	4,945	4,845	4,965	5,315
Placed June deadline applicants	Quintile 1	90	90	90	95	95	80
	Quintile 2	145	250	190	230	250	230
	Quintile 3	265	335	290	295	340	325
	Quintile 4	430	530	450	560	525	560
	Quintile 5	1,010	1,235	1,035	1,170	1,125	1,175
All placed applicants	Quintile 1	95	95	100	100	100	90
	Quintile 2	150	260	210	235	260	245
	Quintile 3	275	355	315	305	360	340
	Quintile 4	440	545	500	580	550	585
	Quintile 5	1,050	1,280	1,120	1,205	1,185	1,245
June deadline applicants per 10,000 population	Quintile 1	31.8	40.9	35.1	36.5	38.8	46.7
	Quintile 2	72.3	88.4	69.6	72.2	82.2	82.9
	Quintile 3	112.5	130.7	100.2	95.9	107.4	117.7
	Quintile 4	170.5	196.5	157.9	157.1	165.9	176.7
	Quintile 5	327.9	376.5	303.3	289.3	300.6	323.7
Placed June deadline applicants per 10,000 population	Quintile 1	6.4	6.4	6.3	6.6	7.0	6.1
	Quintile 2	9.7	16.8	13.1	15.4	17.2	16.3
	Quintile 3	17.2	22.0	19.1	19.1	22.6	21.8
	Quintile 4	27.0	33.9	29.2	35.8	34.1	36.5
	Quintile 5	60.1	74.7	63.5	69.8	68.1	71.4
All placed applicants per 10,000 population	Quintile 1	6.8	6.8	7.1	7.1	7.4	6.8
	Quintile 2	10.0	17.8	14.4	15.9	18.0	17.4
	Quintile 3	17.9	23.2	20.8	20.0	23.9	22.9
	Quintile 4	27.7	35.0	32.5	37.0	35.6	38.2
	Quintile 5	62.6	77.3	68.5	71.9	71.8	75.9

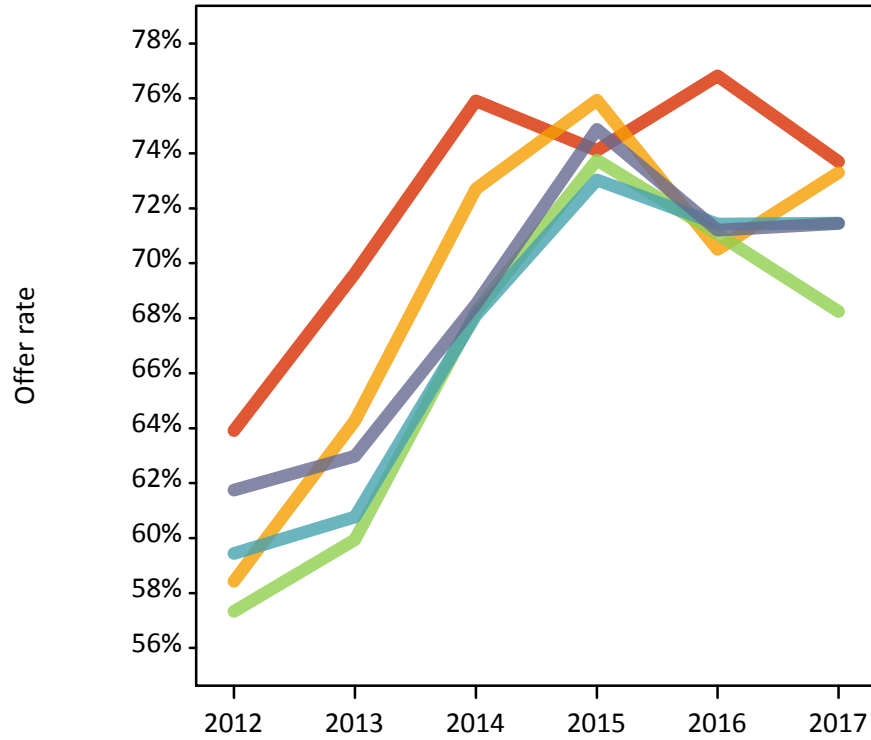
P.8 18 year old applications by POLAR3 quintile

Statistic	POLAR3 quintile	2012	2013	2014	2015	2016	2017
June deadline applications	Quintile 1	570	675	575	585	590	710
	Quintile 2	1,365	1,645	1,285	1,280	1,430	1,415
	Quintile 3	2,205	2,470	1,850	1,745	1,930	2,065
	Quintile 4	3,400	3,790	2,915	2,955	3,035	3,235
	Quintile 5	6,925	7,865	6,065	5,860	5,970	6,360
Offers	Quintile 1	365	470	440	435	455	525
	Quintile 2	795	1,060	935	970	1,010	1,040
	Quintile 3	1,265	1,480	1,260	1,285	1,375	1,410
	Quintile 4	2,020	2,300	1,985	2,160	2,165	2,310
	Quintile 5	4,275	4,955	4,155	4,390	4,250	4,545
Offer rate	Quintile 1	63.9%	69.6%	75.9%	74.1%	76.8%	73.7%
	Quintile 2	58.4%	64.3%	72.7%	75.9%	70.5%	73.3%
	Quintile 3	57.3%	59.9%	68.2%	73.8%	71.1%	68.3%
	Quintile 4	59.4%	60.8%	68.1%	73.0%	71.4%	71.5%
	Quintile 5	61.7%	63.0%	68.5%	74.9%	71.2%	71.4%
Average offer rate	Quintile 1	62.0%	65.0%	68.6%	72.6%	72.7%	70.3%
	Quintile 2	58.7%	61.8%	67.8%	72.2%	68.2%	70.3%
	Quintile 3	59.7%	61.2%	68.3%	72.7%	70.8%	70.1%
	Quintile 4	60.4%	62.2%	69.7%	74.5%	72.1%	72.1%
	Quintile 5	60.6%	62.8%	69.4%	75.4%	71.9%	71.6%
Percentage point difference between offer rate and average offer rate	Quintile 1	1.9	4.7	7.3	1.5	4.1	3.4
	Quintile 2	-0.3	2.5	5.0	3.7	2.3	3.0
	Quintile 3	-2.4	-1.2	-0.1	1.0	0.3	-1.9
	Quintile 4	-0.9	-1.5	-1.6	-1.4	-0.7	-0.6
	Quintile 5	1.1	0.2	-0.9	-0.5	-0.7	-0.1
Contribution of group to the average offer rate	Quintile 1	0.119	0.126	0.146	0.165	0.160	0.165
	Quintile 2	0.162	0.167	0.177	0.187	0.188	0.165
	Quintile 3	0.211	0.197	0.207	0.209	0.212	0.223
	Quintile 4	0.286	0.273	0.285	0.299	0.294	0.290
	Quintile 5	0.520	0.518	0.525	0.526	0.513	0.510

P.9 18 year old offer rate by POLAR3 quintile

Note: The line for a group is not plotted when that group made fewer than 10 applications in any of the years from 2012-2017.

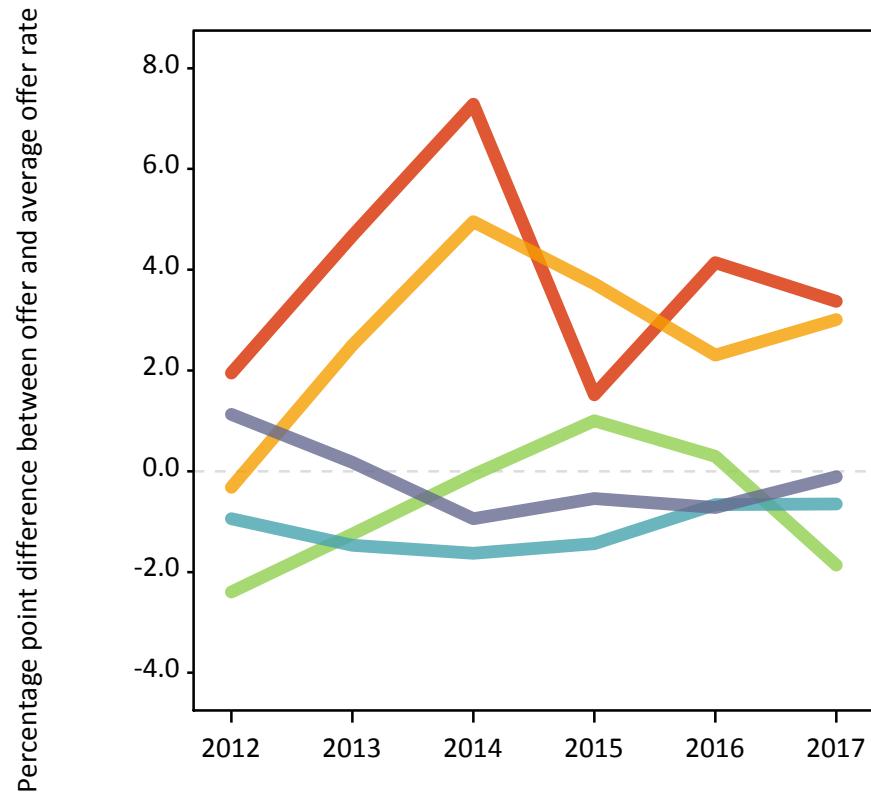
- Quintile 1
- Quintile 2
- Quintile 3
- Quintile 4
- Quintile 5



P.10 Percentage point difference between 18 year old offer rate and average offer rate by POLAR3 quintile

Note: The line for a group is not plotted when that group made fewer than 50 applications in any of the years from 2012-2017.

- Quintile 1
- Quintile 2
- Quintile 3
- Quintile 4
- Quintile 5



P.11 18 year old, Scotland domiciled applicants by SIMD 2016 quintile

Statistic	SIMD quintile	2012	2013	2014	2015	2016	2017
June deadline applicants	Quintile 1	690	735	655	600	690	745
	Quintile 2	940	1,075	910	800	885	985
	Quintile 3	1,435	1,530	1,225	1,245	1,195	1,275
	Quintile 4	1,960	2,105	1,695	1,685	1,740	1,800
	Quintile 5	3,015	3,250	2,810	2,580	2,690	2,770
Placed June deadline applicants	Quintile 1	130	165	155	180	185	180
	Quintile 2	190	210	210	225	255	275
	Quintile 3	280	320	255	320	315	295
	Quintile 4	380	405	345	425	415	435
	Quintile 5	620	675	630	710	685	700
All placed applicants	Quintile 1	135	170	165	185	190	190
	Quintile 2	200	215	220	225	265	280
	Quintile 3	290	325	265	330	320	300
	Quintile 4	395	410	355	430	430	440
	Quintile 5	640	680	645	715	690	715
June deadline applicants per 10,000 population	Quintile 1	542.0	576.1	517.2	488.8	570.4	642.8
	Quintile 2	795.5	915.0	772.7	700.3	805.7	921.0
	Quintile 3	1,198.8	1,294.6	1,046.2	1,066.0	1,061.2	1,174.3
	Quintile 4	1,573.2	1,704.6	1,380.7	1,401.0	1,450.3	1,542.9
	Quintile 5	2,328.6	2,526.0	2,191.8	2,028.3	2,150.2	2,214.2
Placed June deadline applicants per 10,000 population	Quintile 1	100.6	128.5	122.8	145.3	154.0	154.5
	Quintile 2	162.1	180.1	180.2	195.5	232.5	256.6
	Quintile 3	232.4	269.1	216.3	273.5	277.9	271.7
	Quintile 4	304.9	326.8	280.2	354.4	348.0	371.4
	Quintile 5	480.6	525.3	491.1	556.2	546.4	560.7
All placed applicants per 10,000 population	Quintile 1	105.3	132.5	128.3	148.6	158.1	163.1
	Quintile 2	168.0	182.7	187.9	199.0	239.8	259.4
	Quintile 3	241.6	276.7	225.7	280.4	284.2	278.1
	Quintile 4	315.3	330.1	289.2	356.1	357.2	378.2
	Quintile 5	493.7	529.9	502.0	562.5	553.6	572.7

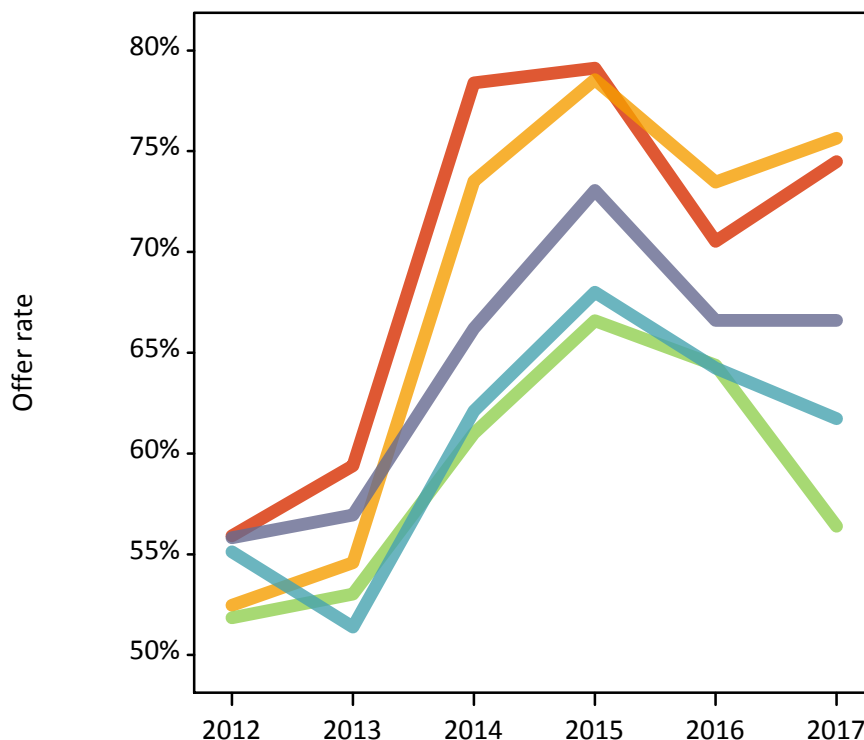
P.12 18 year old, Scotland domiciled applications by SIMD 2016 quintile

Statistic	SIMD quintile	2012	2013	2014	2015	2016	2017
June deadline applications	Quintile 1	1,015	1,025	895	790	890	1,005
	Quintile 2	1,315	1,505	1,225	1,035	1,145	1,275
	Quintile 3	1,955	2,120	1,595	1,605	1,530	1,610
	Quintile 4	2,625	2,845	2,200	2,165	2,225	2,300
	Quintile 5	4,000	4,335	3,615	3,290	3,430	3,505
Offers	Quintile 1	565	610	700	625	625	745
	Quintile 2	690	820	900	815	840	965
	Quintile 3	1,015	1,125	975	1,070	985	910
	Quintile 4	1,445	1,460	1,365	1,475	1,430	1,420
	Quintile 5	2,230	2,470	2,395	2,405	2,285	2,335
Offer rate	Quintile 1	55.9%	59.4%	78.4%	79.1%	70.5%	74.5%
	Quintile 2	52.5%	54.6%	73.5%	78.6%	73.5%	75.6%
	Quintile 3	51.8%	53.0%	61.0%	66.6%	64.4%	56.4%
	Quintile 4	55.1%	51.4%	62.1%	68.0%	64.2%	61.7%
	Quintile 5	55.8%	56.9%	66.2%	73.1%	66.6%	66.6%
Average offer rate	Quintile 1	52.2%	51.6%	62.0%	67.5%	63.7%	62.8%
	Quintile 2	54.0%	53.7%	64.9%	69.6%	64.9%	64.4%
	Quintile 3	54.1%	54.1%	65.9%	71.6%	66.3%	65.1%
	Quintile 4	55.0%	55.1%	67.1%	72.7%	67.9%	66.5%
	Quintile 5	55.2%	56.2%	67.9%	73.1%	68.0%	66.9%
Percentage point difference between offer rate and average offer rate	Quintile 1	3.7	7.8	16.4	11.6	6.8	11.6
	Quintile 2	-1.5	0.9	8.6	8.9	8.6	11.3
	Quintile 3	-2.3	-1.1	-4.9	-5.0	-1.9	-8.8
	Quintile 4	0.1	-3.7	-5.0	-4.7	-3.7	-4.8
	Quintile 5	0.6	0.8	-1.7	-0.0	-1.4	-0.3
Contribution of group to the average offer rate	Quintile 1	0.133	0.118	0.150	0.131	0.138	0.144
	Quintile 2	0.147	0.158	0.162	0.147	0.156	0.160
	Quintile 3	0.204	0.201	0.192	0.209	0.193	0.192
	Quintile 4	0.259	0.263	0.258	0.269	0.266	0.265
	Quintile 5	0.392	0.393	0.410	0.400	0.402	0.393

P.13 18 year old, Scotland domiciled offer rate by SIMD 2016 quintile

Note: The line for a group is not plotted when that group made fewer than 10 applications in any of the years from 2012-2017.

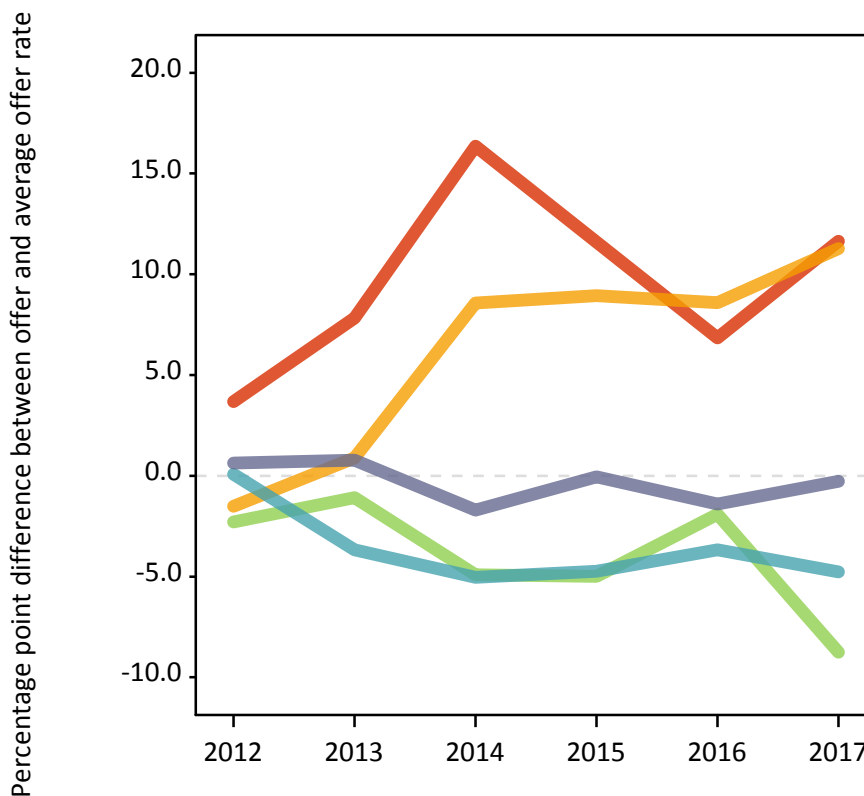
- Quintile 1
- Quintile 2
- Quintile 3
- Quintile 4
- Quintile 5



P.14 Percentage point difference between 18 year old, Scotland domiciled offer rate and average offer rate by SIMD 2016 quintile

Note: The line for a group is not plotted when that group made fewer than 50 applications in any of the years from 2012-2017.

- Quintile 1
- Quintile 2
- Quintile 3
- Quintile 4
- Quintile 5



P.15 18 year old applicants by ethnic group

Statistic	Ethnic group	2012	2013	2014	2015	2016	2017
June deadline applicants	Asian	470	570	470	465	555	625
	Black	65	115	80	90	105	145
	Mixed	210	285	230	250	285	325
	White	10,680	12,120	9,555	9,475	9,795	10,365
	Other	45	50	55	50	60	65
Placed June deadline applicants	Asian	65	85	75	90	100	95
	Black	5	20	10	10	10	15
	Mixed	35	50	35	50	50	50
	White	1,820	2,280	1,915	2,175	2,140	2,175
	Other	5	10	10	10	10	15
All placed applicants	Asian	75	85	85	95	120	110
	Black	5	20	15	10	15	20
	Mixed	35	55	45	55	55	60
	White	1,885	2,365	2,080	2,240	2,230	2,290
	Other	5	10	10	10	10	20
June deadline applicants per 10,000 population	Asian	72.4	86.7	69.5	65.8	77.3	85.0
	Black	22.4	39.4	25.7	28.0	32.9	46.7
	Mixed	81.4	105.0	80.3	81.4	89.9	100.6
	White	165.4	192.6	154.8	152.1	161.9	174.6
	Other	49.7	54.0	56.9	50.8	59.3	63.1
Placed June deadline applicants per 10,000 population	Asian	10.3	12.7	11.4	12.9	13.8	12.9
	Black	2.1	6.1	3.6	2.8	3.8	5.1
	Mixed	13.1	18.5	12.9	16.5	16.2	16.2
	White	28.2	36.2	31.0	34.9	35.4	36.7
	Other	7.9	11.0	9.7	10.4	10.0	13.6
All placed applicants per 10,000 population	Asian	11.4	13.2	12.8	13.6	16.7	14.7
	Black	2.1	7.4	4.9	3.1	5.1	6.0
	Mixed	14.2	20.0	16.0	17.8	18.1	18.4
	White	29.2	37.6	33.7	36.0	36.9	38.6
	Other	7.9	12.1	10.7	11.4	12.1	17.5

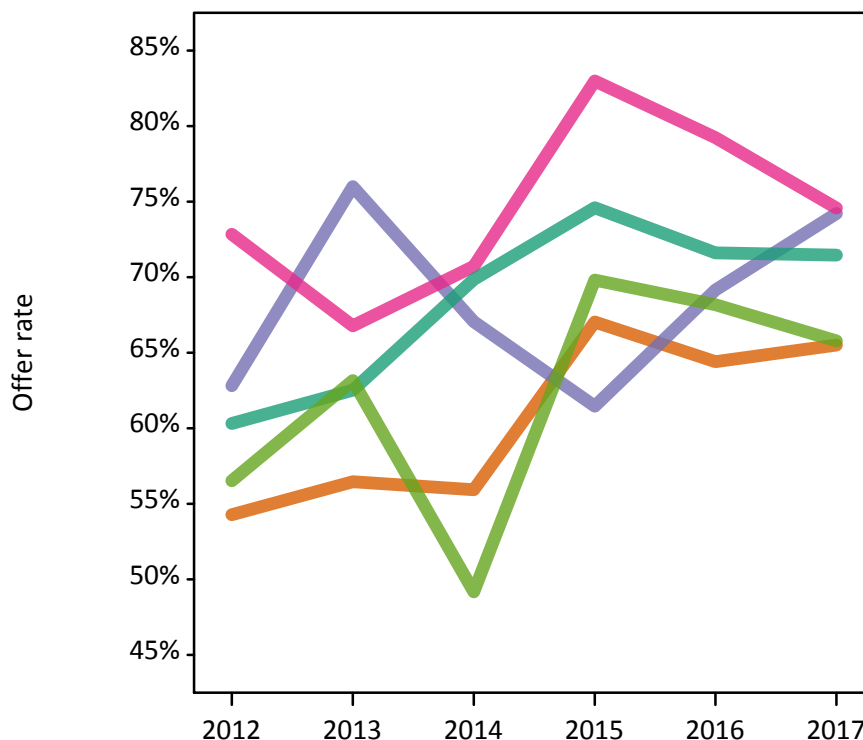
P.16 18 year old applications by ethnic group

Statistic	Ethnic group	2012	2013	2014	2015	2016	2017
June deadline applications	Asian	570	705	555	550	665	720
	Black	80	125	90	95	105	160
	Mixed	255	330	265	280	315	360
	White	13,490	15,205	11,715	11,415	11,730	12,425
	Other	45	55	60	55	65	75
Offers	Asian	310	395	310	370	425	470
	Black	50	95	60	60	75	120
	Mixed	185	220	185	235	250	265
	White	8,140	9,505	8,180	8,515	8,400	8,880
	Other	25	35	30	35	45	50
Offer rate	Asian	54.3%	56.5%	55.9%	67.0%	64.4%	65.5%
	Black	62.8%	76.0%	67.0%	61.5%	69.2%	74.2%
	Mixed	72.8%	66.8%	70.7%	83.0%	79.2%	74.6%
	White	60.3%	62.5%	69.8%	74.6%	71.6%	71.4%
	Other	56.5%	63.2%	49.2%	69.8%	68.2%	65.8%
Average offer rate	Asian	57.3%	59.3%	58.1%	69.3%	66.6%	68.1%
	Black	62.9%	75.2%	66.7%	68.3%	67.8%	73.4%
	Mixed	67.9%	68.1%	72.5%	80.5%	75.0%	74.9%
	White	60.3%	62.3%	69.7%	74.5%	71.7%	71.3%
	Other	62.3%	65.3%	48.6%	67.9%	62.0%	71.0%
Percentage point difference between offer rate and average offer rate	Asian	-3.0	-2.8	-2.1	-2.2	-2.2	-2.6
	Black	-0.1	0.8	0.3	-6.9	1.4	0.8
	Mixed	5.0	-1.3	-1.8	2.5	4.2	-0.3
	White	0.1	0.2	0.2	0.1	-0.0	0.1
	Other	N/A	-2.2	0.6	1.9	6.2	-5.3
Contribution of group to the average offer rate	Asian	0.144	0.145	0.160	0.159	0.157	0.175
	Black	0.127	0.164	0.184	0.147	0.221	0.152
	Mixed	0.106	0.114	0.126	0.118	0.129	0.124
	White	0.939	0.932	0.933	0.928	0.917	0.913
	Other	0.102	0.054	0.106	0.125	0.105	0.065

P.17 18 year old offer rate by ethnic group

Note: The line for a group is not plotted when that group made fewer than 10 applications in any of the years from 2012-2017.

- Asian
- Black
- Mixed
- White
- Other



P.18 Percentage point difference between 18 year old offer rate and average offer rate by ethnic group

Note: The line for a group is not plotted when that group made fewer than 50 applications in any of the years from 2012-2017.

- Asian
- Black
- Mixed
- White
- Other



P.19 Applicants (all ages)

Statistic	2012	2013	2014	2015	2016	2017
June deadline applicants	18,265	20,595	17,085	19,800	21,110	22,005
Placed June deadline applicants	3,180	3,735	3,200	3,900	3,965	4,145
All placed applicants	3,305	3,875	3,505	4,050	4,160	4,380

P.20 Applications (all ages)

Statistic	2012	2013	2014	2015	2016	2017
June deadline applications	23,065	25,700	20,970	23,480	25,040	26,155
Offers	13,125	14,770	12,615	13,660	13,995	14,980
Offer rate	56.9%	57.5%	60.2%	58.2%	55.9%	57.3%

P.21 Applicants (all ages) by sex

Statistic	Sex	2012	2013	2014	2015	2016	2017
June deadline applicants	Men	8,095	9,170	7,195	8,130	8,525	8,765
	Women	10,170	11,425	9,890	11,670	12,585	13,240
Placed June deadline applicants	Men	1,390	1,600	1,305	1,575	1,585	1,580
	Women	1,790	2,130	1,895	2,325	2,375	2,565
All placed applicants	Men	1,450	1,660	1,420	1,640	1,690	1,655
	Women	1,855	2,215	2,085	2,410	2,470	2,725

P.22 Applications (all ages) by sex

Statistic	Sex	2012	2013	2014	2015	2016	2017
June deadline applications	Men	10,630	11,820	9,030	9,865	10,345	10,740
	Women	12,435	13,880	11,940	13,620	14,690	15,415
Offers	Men	5,960	6,735	5,425	6,035	6,015	6,485
	Women	7,165	8,035	7,190	7,625	7,980	8,495
Offer rate	Men	56.1%	57.0%	60.1%	61.2%	58.1%	60.4%
	Women	57.6%	57.9%	60.2%	56.0%	54.3%	55.1%

P.23 Applicants (all ages) by POLAR3 quintile

Statistic	POLAR3 quintile	2012	2013	2014	2015	2016	2017
June deadline applicants	Quintile 1	895	1,100	955	1,155	1,230	1,295
	Quintile 2	1,930	2,225	1,910	2,290	2,580	2,535
	Quintile 3	2,830	3,135	2,585	3,035	3,225	3,495
	Quintile 4	4,275	4,795	3,880	4,605	4,945	5,085
	Quintile 5	8,270	9,280	7,720	8,655	9,080	9,525
Placed June deadline applicants	Quintile 1	155	175	145	185	175	170
	Quintile 2	285	410	325	420	455	440
	Quintile 3	445	520	450	545	580	585
	Quintile 4	690	810	685	885	885	955
	Quintile 5	1,595	1,805	1,590	1,860	1,860	1,980
All placed applicants	Quintile 1	160	180	170	200	180	185
	Quintile 2	295	430	355	435	475	470
	Quintile 3	460	545	495	570	610	625
	Quintile 4	725	840	765	915	930	995
	Quintile 5	1,655	1,870	1,715	1,920	1,955	2,085

P.24 Applications (all ages) by POLAR3 quintile

Statistic	POLAR3 quintile	2012	2013	2014	2015	2016	2017
June deadline applications	Quintile 1	1,110	1,330	1,145	1,325	1,410	1,505
	Quintile 2	2,455	2,825	2,400	2,715	3,080	3,060
	Quintile 3	3,565	3,885	3,155	3,545	3,820	4,100
	Quintile 4	5,355	5,885	4,670	5,485	5,825	6,015
	Quintile 5	10,505	11,700	9,560	10,350	10,840	11,395
Offers	Quintile 1	605	780	625	690	745	815
	Quintile 2	1,310	1,630	1,400	1,495	1,570	1,655
	Quintile 3	1,925	2,095	1,850	1,970	2,040	2,170
	Quintile 4	2,985	3,300	2,775	3,145	3,240	3,495
	Quintile 5	6,235	6,925	5,950	6,325	6,370	6,800
Offer rate	Quintile 1	54.6%	58.6%	54.6%	51.9%	52.9%	54.1%
	Quintile 2	53.3%	57.7%	58.3%	55.1%	51.0%	54.2%
	Quintile 3	54.1%	53.9%	58.7%	55.6%	53.4%	53.0%
	Quintile 4	55.8%	56.1%	59.4%	57.4%	55.6%	58.1%
	Quintile 5	59.4%	59.2%	62.2%	61.1%	58.7%	59.7%

P.25 Scotland domiciled applicants (all ages) by SIMD 2016 quintile

Statistic	SIMD quintile	2012	2013	2014	2015	2016	2017
June deadline applicants	Quintile 1	1,690	1,720	1,635	1,920	2,110	2,285
	Quintile 2	1,790	2,045	1,760	2,085	2,265	2,360
	Quintile 3	2,420	2,620	2,185	2,640	2,785	2,825
	Quintile 4	3,090	3,275	2,805	3,285	3,525	3,680
	Quintile 5	4,455	4,725	4,200	4,645	4,845	4,960
Placed June deadline applicants	Quintile 1	305	355	305	400	410	420
	Quintile 2	360	375	365	440	455	515
	Quintile 3	480	510	425	565	580	535
	Quintile 4	620	625	545	685	710	800
	Quintile 5	935	990	920	1,065	1,110	1,145
All placed applicants	Quintile 1	315	360	330	410	415	450
	Quintile 2	370	380	385	455	475	525
	Quintile 3	505	525	450	585	595	550
	Quintile 4	640	635	570	695	730	815
	Quintile 5	965	1,000	950	1,080	1,130	1,170

P.26 Scotland domiciled applications (all ages) by SIMD 2016 quintile

Statistic	SIMD quintile	2012	2013	2014	2015	2016	2017
June deadline applications	Quintile 1	2,340	2,385	2,175	2,420	2,630	2,925
	Quintile 2	2,455	2,755	2,330	2,580	2,815	2,950
	Quintile 3	3,235	3,530	2,840	3,270	3,480	3,495
	Quintile 4	4,125	4,345	3,585	4,080	4,330	4,580
	Quintile 5	5,905	6,250	5,420	5,745	6,035	6,125
Offers	Quintile 1	1,220	1,255	1,220	1,190	1,205	1,460
	Quintile 2	1,235	1,370	1,385	1,395	1,390	1,600
	Quintile 3	1,670	1,755	1,520	1,695	1,725	1,600
	Quintile 4	2,240	2,215	1,995	2,185	2,230	2,355
	Quintile 5	3,285	3,475	3,345	3,440	3,450	3,510
Offer rate	Quintile 1	52.2%	52.6%	56.0%	49.3%	45.8%	49.9%
	Quintile 2	50.2%	49.7%	59.4%	54.0%	49.3%	54.2%
	Quintile 3	51.6%	49.7%	53.5%	51.8%	49.7%	45.8%
	Quintile 4	54.3%	50.9%	55.6%	53.6%	51.5%	51.5%
	Quintile 5	55.6%	55.6%	61.7%	59.8%	57.2%	57.3%

P.27 Applicants (all ages) by ethnic group

Statistic	Ethnic group	2012	2013	2014	2015	2016	2017
June deadline applicants	Asian	920	1,075	950	1,070	1,200	1,215
	Black	290	325	285	345	350	420
	Mixed	385	450	385	480	500	560
	White	16,465	18,490	15,275	17,595	18,725	19,420
	Other	105	105	100	145	160	170
Placed June deadline applicants	Asian	120	155	150	150	165	170
	Black	25	40	30	25	25	30
	Mixed	60	90	65	85	80	80
	White	2,955	3,410	2,930	3,580	3,620	3,790
	Other	10	15	15	25	25	25
All placed applicants	Asian	130	160	160	165	195	195
	Black	25	45	40	30	35	35
	Mixed	60	95	75	95	90	90
	White	3,060	3,530	3,190	3,700	3,760	3,975
	Other	10	15	20	30	30	35

P.28 Applications (all ages) by ethnic group

Statistic	Ethnic group	2012	2013	2014	2015	2016	2017
June deadline applications	Asian	1,130	1,320	1,135	1,220	1,420	1,395
	Black	330	360	325	375	370	470
	Mixed	475	525	445	555	580	640
	White	20,895	23,200	18,845	20,970	22,255	23,210
	Other	125	120	110	160	190	195
Offers	Asian	565	670	540	595	685	705
	Black	135	185	120	130	130	200
	Mixed	295	340	280	365	365	385
	White	12,000	13,415	11,570	12,390	12,610	13,455
	Other	60	65	45	75	80	100
Offer rate	Asian	49.9%	50.6%	47.5%	48.5%	48.2%	50.5%
	Black	41.5%	51.5%	37.1%	34.6%	35.3%	43.0%
	Mixed	62.7%	64.8%	63.1%	65.4%	63.2%	60.3%
	White	57.4%	57.8%	61.4%	59.1%	56.6%	58.0%
	Other	48.0%	56.3%	42.3%	48.1%	42.9%	50.3%

Technical Notes and Definitions

UCAS undergraduate scheme

Adjustment

Adjustment allows applicants who have met and exceeded the terms of their conditional firm offer to seek and find a place at another provider whilst keeping their place at their original firm choice provider.

Clearing

Clearing is a route for applicants that are not placed and holding no offers to find a place on courses with vacancies.

Cycle year

The UCAS application cycle which runs from September to October the following year. For example the 2017 cycle runs from September 2016 through to October 2017.

End of cycle

The point in the cycle to which the numbers in this report refer, and the point at which the cycle is closed such that no more applications or offers can be made, and no more applicants can be placed. Numbers reported at the end of cycle exclude information on a small number of applicants who cancelled during the cycle.

Extra

Applicants who are unsuccessful in obtaining an offer or decline all offers may be eligible to apply through Extra, where they can apply to one further course at a time. Extra operates from 25 February until early July. It provides applicants who are eligible the possibility of obtaining an offer before exam results are published and Clearing starts.

June 30 deadline

The deadline for main scheme applications. Applicants who apply after this date will go directly into Clearing.

Record of Prior Acceptance (RPA)

RPA is an acceptance route used when a provider informs UCAS of applicants it has accepted outside of the normal application process (e.g. individuals who have applied directly to the provider).

Reporting groups

Ethnic group

High level grouping of ethnic origin as declared by the applicant: 'White', 'Black', 'Asian', 'Mixed', 'Other', 'Unknown'. Applicants who declare themselves as 'Unknown' ethnic origin are not reported in these tables, but are included in the associated csv data file.

POLAR3 quintile

Developed by HEFCE, POLAR3 classifies small areas across the UK into five groups according to their level of young participation in Higher Education. Each of these groups represents around 20 per cent of young people and is ranked from Quintile 1 (areas with the lowest young participation rates, considered as the most disadvantaged) to Quintile 5 (highest young participation rates, considered most advantaged). POLAR3 is based on the participation rates of young people between 2005 and 2009 who entered Higher Education between 2005-06 and 2010-11, therefore is most suitable for applicants aged 19 and under. These groups are assigned using the postcode declared by the applicant at the time of their application. If a UK postcode is invalid, considered unsafe for measurement or there is no link to Census geography possible then the applicant is not assigned to a quintile. Applicants with no POLAR3 quintile are not reported.

Sex

Sex as declared by the applicant.

SIMD 2016 quintile

Scottish index of multiple deprivation (SIMD) identifies small area concentrations of multiple deprivation across all of Scotland, providing a relative measure of deprivation amongst 6505 small areas (data zones) based on 7 socio-economic domains. These small areas are classified into five groups ranked from Quintile 1 (considered the most deprived) to Quintile 5 (considered least deprived), with equal populations in each quintile. Quintiles are assigned using the postcode declared by the applicant, applicants declaring invalid postcodes are classified as 'Not assigned' and are not reported.

SIMD is only defined for applicants domiciled in Scotland, therefore any applicants domiciled outside of Scotland cannot be assigned to an SIMD quintile and so are not reported for this measure.

SIMD is only reported for providers in Scotland. Application and entry rates by SIMD are reported in the 2017 End of Cycle Report and the 2017 cycle January deadline application rate report.

Statistics reported in the tables

All placed applicants

The number of applicants placed for entry into higher education at the provider through one of their choices, including any choices made through Extra, or via Adjustment, Clearing or RPA.

All placed applicants per 10,000 population

The number of total UK domiciled 18 year old placed applicants for entry into higher education at the provider divided by the number of UK 18 year olds in the population, multiplied by 10,000. This gives the number of 18 year olds, for every 10,000 in the population, that were placed at the provider through one of their choices, including any choices made through Extra, or via Adjustment, Clearing or RPA. It is an alternative way of expressing the entry rate to a provider. By referencing the underlying population this statistic shows how the number of placed applicants is changing in relation to the available pool of potential applicants and so gives the chance that somebody from the group will be placed at a provider.

This statistic is only reported for 18 year olds.

Average offer rate

The offer rate that you might expect if the predicted grades and subject choice of applicants were the only factors that influenced whether an applicant was made an offer by the provider. The average offer rate is calculated by dividing applicants according to their specific combination of grades (for A levels the best three predicted grades are used, for BTECs, International Baccalaureate and Scottish Highers and Advanced Highers, predicted grades along with any grades already achieved upon applying are used) and subject choice. For each combination the number of main scheme offers is divided by the number of main scheme applications, to give an overall offer rate. This is then multiplied by the number of applications made by the group for which the average offer rate is being calculated (for example POLAR3 quintile 1), to give an average number of offers for that group. These average number of offers are then added together across all combinations of predicted grade and subject and divided by the number of main scheme applications from the group to give the average offer rate.

The average offer rate does not attempt to control for any other factors that may play a part in the decision to make an offer, such as the subject of the qualifications studied, their relevance to a course, or the grade in each subject; higher numbers of A levels being studied; the exact profile of grades predicted; personal statements; teacher references; interviews; or any other criteria (such as work experience or portfolios) that may be part of the admissions decision.

This statistic is only reported for 18 year olds.

Contribution of group to the average offer rate

The way in which the average offer rate is defined means that the pattern of application and offers of a group (for example POLAR3 quintile 1) will always contribute, in part, to the average offer rate for that group. When this contribution is large, the average offer rate will mainly reflect the patterns for the group, meaning that the value of the average offer rate will be similar to the offer rate, the percentage point difference statistic will be small, and any real difference between the offer rate and what might be expected given the predicted grades and subject choices of the applicants will be difficult to detect.

Values of the contribution of group to the average offer rate range between 0 and 1. The closer the value is to 1 the greater the contribution a group makes to its own average offer rate.

This statistic is only reported for 18 year olds.

Placed June deadline applicants

An applicant who has been placed for entry into higher education at the provider through a June deadline application.

Placed June deadline applicants per 10,000 population

The number of UK domiciled 18 year old placed June deadline applicants at the provider divided by the number of UK 18 year olds in the population, multiplied by 10,000. This gives the number of 18 year olds, for every 10,000 in the population, that were placed at the provider through one of their June deadline applications. It is an alternative way of expressing the entry rate to a provider, but for placed June deadline applicants only. By referencing the underlying population this statistic shows how the number of placed June deadline applicants is changing in relation to the available pool of potential 18 year old applicants and so gives the chance that somebody from the group will be placed at a provider through a June deadline application.

This statistic is only reported for 18 year olds.

June deadline applications

An application (or choice) to a course in higher education to the provider that is made by the June 30 deadline. Each applicant can make up to five choices this way. The number of June deadline applications does not include choices made through the following routes: Clearing, Extra, Adjustment and RPAs. Applications made to October deadline courses received after the October deadline are not included in these statistics.

June deadline applicants

The number of applicants that made at least one application to the provider by the June 30 deadline.

June deadline applicants per 10,000 population

The number of UK domiciled 18 year old June deadline applicants to the provider divided by the number of UK 18 year olds in the population, multiplied by 10,000. This gives the number of 18 year olds, for every 10,000 in the population, who applied by the June 30 deadline. It is equivalent to the application rate. By referencing the underlying population this statistic shows how the number of June deadline applicants is changing in relation to the available pool of potential 18 year old applicants and so gives the chance that somebody from the group will apply to a provider by the June 30 deadline.

This statistic is only reported for 18 year olds.

Offers

An offer is defined as a provider's decision in response to an application to offer a place to an applicant, often subject to the applicant satisfying academic and/or other criteria, via a June deadline application (i.e. does not cover choices made through the following routes: Clearing, Extra, Adjustment and RPAs).

Offer rate

The number of offers made divided by the number of June deadline applications. This gives the proportion of all June deadline applications to the provider that received an offer.

Percentage point difference between offer rate and average offer rate

The offer rate minus the average offer rate.

The percentage point difference can be compared to the expected range of statistical variation resulting from the calculation of the average offer rate using the Average Offer Rate Lookup Table. Where the value of the percentage point difference lies outside of this range, the percentage point difference may be considered to represent a real difference between the offer rate and the average offer rate.

Other definitions

Age

This analysis uses country-specific age definitions that align with the cut off points for school and college cohorts within the different administrations of the UK. For England and Wales, ages are defined on the 31 August, for Northern Ireland on the 1 July and for Scotland on the 28 February the following year. Defining ages in this way matches the assignment of children to school cohorts. For applicants outside of the UK a cohort cut off of 31 August has been used. Numbers for applicants aged 17 and under are included in the tables that report numbers for all age groups. Providers in Scotland typically receive a higher proportion of applicants aged 17 and under compared to providers elsewhere in the UK.

Provider

A higher education provider - a university or college.

UK domiciled

Declared area of permanent residence within England, Northern Ireland, Scotland and Wales. Applicants from the Channel Islands and Isle of Man are not included.