

U80 UCL (University College London)

Cycle years: 2012 - 2017

Cycle Reference Point: End of Cycle

Applicant coverage: UK domiciled

Reporting groups: Sex, POLAR3, ethnic group

Applicant statistics: June deadline applicants, placed June deadline applicants, all placed applicants, June deadline applicants per 10,000 population, placed June deadline applicants per 10,000 population, all placed applicants per 10,000 population

Application statistics: June deadline applications, offers, offer rate, average offer rate, percentage point difference between offer rate and average offer rate, contribution of group to the average offer rate

Non-disclosure controls: To avoid the disclosure of information about any individual the following measures are taken

- Applicants, placed applicants, applications and offers are rounded to the nearest 5.
- Applicants/placed applicants per 10,000 population figures are reported as 0 if the applicant/placed applicant figures are rounded to 0.
- All statistics related to the offer rate are not reported when the number of applications for a group is less than 10. The percentage point difference between the offer rate and the average offer rate is not reported when the number of applications for a group is less than 50.
- Offer rates are reported as 0% if there are fewer than 5 offers, and 100% if the number of offers is within 5 of the number of applications. When the offer rate is reported as 0% or 100%, it is reported in italics.

Contents:

- 18 year old applicants: P.1
- 18 year old applications: P.2
- 18 year old applicants by sex: P.3
- 18 year old applications by sex: P.4
- 18 year old applicants by POLAR3 quintile: P.7
- 18 year old applications by POLAR3 quintile: P.8
- 18 year old applicants by ethnic group: P.11
- 18 year old applications by ethnic group: P.12
- Applicants (all ages): P.15
- Applications (all ages): P.16
- Applicants (all ages) by sex: P.17
- Applications (all ages) by sex: P.18
- Applicants (all ages) by POLAR3 quintile: P.19
- Applications (all ages) by POLAR3 quintile: P.20
- Applicants (all ages) by ethnic group: P.21
- Applications (all ages) by ethnic group: P.22

P.1 18 year old applicants

Statistic	2012	2013	2014	2015	2016	2017
June deadline applicants	11,620	11,600	12,085	12,290	11,950	13,155
Placed June deadline applicants	1,810	1,910	1,925	1,870	1,780	1,830
All placed applicants	1,825	1,945	1,970	1,920	1,840	1,885
June deadline applicants per 10,000 population	150.2	152.4	160.4	160.4	159.4	177.5
Placed June deadline applicants per 10,000	23.4	25.1	25.5	24.4	23.8	24.7
All placed applicants per 10,000 population	23.6	25.6	26.2	25.0	24.6	25.5

P.2 18 year old applications

Statistic	2012	2013	2014	2015	2016	2017
June deadline applications	11,925	11,895	12,425	12,635	12,305	13,555
Offers	5,170	6,610	7,045	7,800	7,755	8,530
Offer rate	43.4%	55.6%	56.7%	61.7%	63.0%	62.9%

P.3 18 year old applicants by sex

Statistic	Sex	2012	2013	2014	2015	2016	2017
June deadline applicants	Men	5,890	5,805	6,125	6,165	5,755	6,460
	Women	5,730	5,795	5,960	6,125	6,195	6,695
Placed June deadline applicants	Men	880	910	925	910	855	855
	Women	930	1,005	1,000	960	925	975
All placed applicants	Men	890	925	950	930	880	880
	Women	935	1,020	1,025	990	960	1,010
June deadline applicants per 10,000 population	Men	148.5	148.7	158.2	157.1	149.8	170.1
	Women	152.0	156.4	162.8	163.9	169.5	185.4
Placed June deadline applicants per 10,000 population	Men	22.2	23.3	23.9	23.2	22.2	22.5
	Women	24.7	27.1	27.3	25.7	25.4	27.0
All placed applicants per 10,000 population	Men	22.5	23.7	24.5	23.7	22.9	23.1
	Women	24.8	27.6	27.9	26.5	26.3	27.9

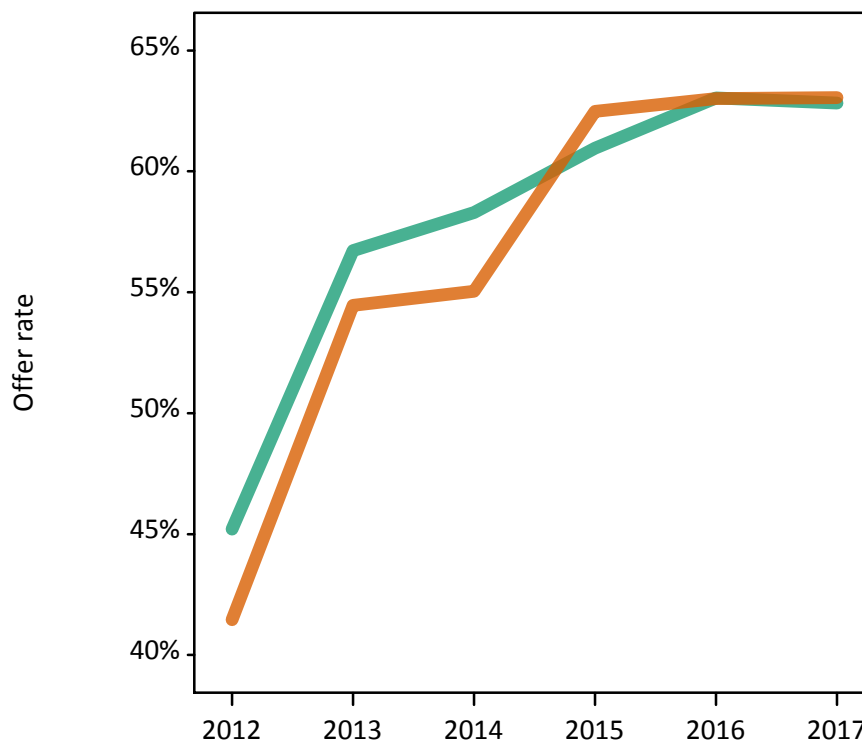
P.4 18 year old applications by sex

Statistic	Sex	2012	2013	2014	2015	2016	2017
June deadline applications	Men	6,055	5,955	6,285	6,310	5,905	6,640
	Women	5,870	5,935	6,140	6,330	6,395	6,915
Offers	Men	2,740	3,380	3,665	3,845	3,725	4,170
	Women	2,435	3,235	3,380	3,955	4,030	4,360
Offer rate	Men	45.2%	56.7%	58.3%	61.0%	63.0%	62.8%
	Women	41.5%	54.5%	55.0%	62.5%	63.0%	63.1%
Average offer rate	Men	45.8%	57.4%	58.3%	61.9%	63.7%	63.1%
	Women	40.9%	53.8%	55.0%	61.5%	62.4%	62.8%
Percentage point difference between offer rate and average offer rate	Men	-0.5	-0.7	-0.0	-0.9	-0.6	-0.3
	Women	0.6	0.7	0.0	0.9	0.6	0.3
Contribution of group to the average offer rate	Men	0.598	0.602	0.604	0.607	0.586	0.595
	Women	0.585	0.601	0.595	0.608	0.617	0.611

P.5 18 year old offer rate by sex

Note: The line for a group is not plotted when that group made fewer than 10 applications in any of the years from 2012-2017.

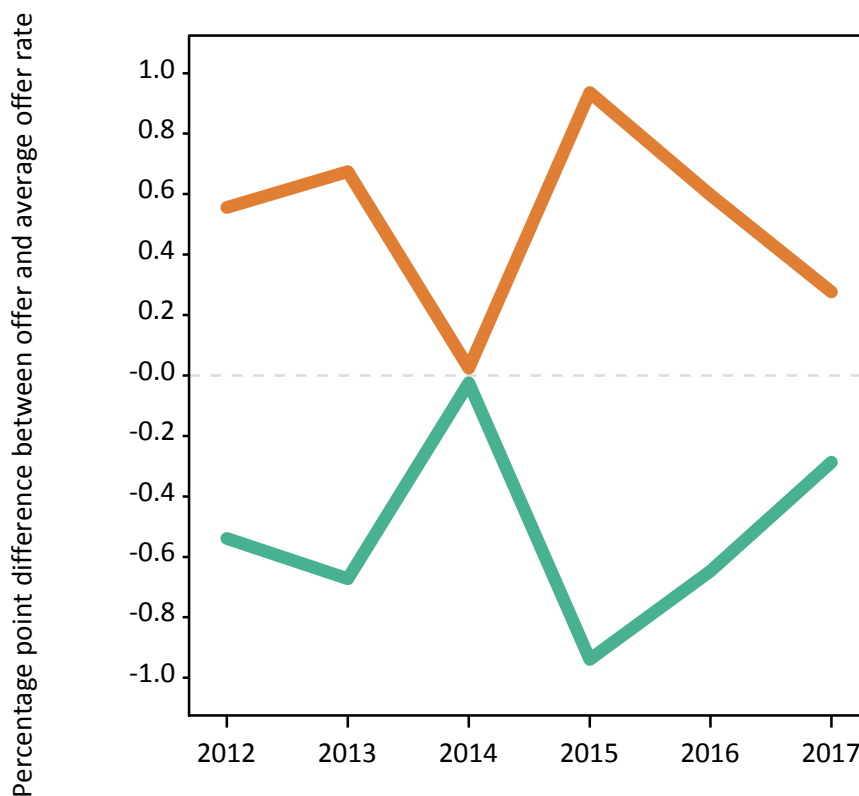
Men
Women



P.6 Percentage point difference between 18 year old offer rate and average offer rate by sex

Note: The line for a group is not plotted when that group made fewer than 50 applications in any of the years from 2012-2017.

Men
Women



P.7 18 year old applicants by POLAR3 quintile

Statistic	POLAR3 quintile	2012	2013	2014	2015	2016	2017
June deadline applicants	Quintile 1	470	510	515	525	465	655
	Quintile 2	960	975	1,010	1,085	1,030	1,140
	Quintile 3	1,780	1,840	1,980	1,990	2,020	2,265
	Quintile 4	2,825	2,760	2,830	2,935	2,815	3,165
	Quintile 5	5,530	5,485	5,720	5,710	5,580	5,870
Placed June deadline applicants	Quintile 1	75	90	75	60	80	70
	Quintile 2	125	140	160	150	120	150
	Quintile 3	260	295	295	285	260	285
	Quintile 4	435	465	420	440	405	435
	Quintile 5	910	920	965	925	915	880
All placed applicants	Quintile 1	75	90	75	60	80	75
	Quintile 2	125	140	165	150	125	150
	Quintile 3	260	300	305	300	270	295
	Quintile 4	440	475	435	455	425	450
	Quintile 5	920	935	990	940	935	905
June deadline applicants per 10,000 population	Quintile 1	33.0	36.5	37.0	37.5	34.4	49.2
	Quintile 2	64.2	66.2	68.9	73.0	71.2	80.4
	Quintile 3	115.3	120.5	131.5	129.6	134.4	152.2
	Quintile 4	178.1	176.6	183.6	187.4	182.3	207.3
	Quintile 5	329.2	331.8	350.7	341.1	337.8	357.4
Placed June deadline applicants per 10,000 population	Quintile 1	5.1	6.5	5.4	4.3	5.8	5.3
	Quintile 2	8.4	9.6	11.0	10.0	8.3	10.6
	Quintile 3	16.8	19.3	19.7	18.6	17.4	19.0
	Quintile 4	27.4	29.6	27.3	28.2	26.1	28.5
	Quintile 5	54.2	55.7	59.2	55.4	55.4	53.7
All placed applicants per 10,000 population	Quintile 1	5.1	6.5	5.4	4.4	5.9	5.7
	Quintile 2	8.5	9.6	11.1	10.2	8.6	10.7
	Quintile 3	16.9	19.8	20.3	19.5	18.0	19.7
	Quintile 4	27.8	30.2	28.1	29.1	27.7	29.5
	Quintile 5	54.6	56.6	60.6	56.2	56.6	55.2

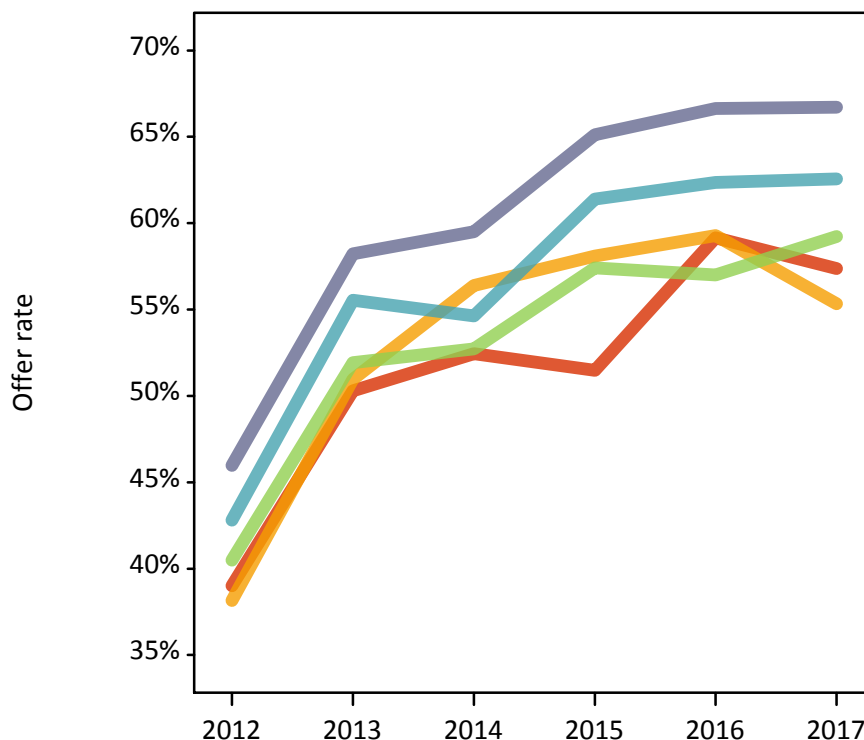
P.8 18 year old applications by POLAR3 quintile

Statistic	POLAR3 quintile	2012	2013	2014	2015	2016	2017
June deadline applications	Quintile 1	485	520	530	540	475	670
	Quintile 2	990	990	1,040	1,110	1,055	1,165
	Quintile 3	1,815	1,895	2,045	2,045	2,085	2,325
	Quintile 4	2,900	2,825	2,895	3,015	2,900	3,265
	Quintile 5	5,680	5,630	5,880	5,880	5,750	6,070
Offers	Quintile 1	190	260	280	280	280	385
	Quintile 2	375	505	585	645	625	645
	Quintile 3	735	985	1,075	1,175	1,190	1,375
	Quintile 4	1,240	1,570	1,580	1,850	1,805	2,045
	Quintile 5	2,610	3,280	3,500	3,830	3,830	4,050
Offer rate	Quintile 1	39.0%	50.3%	52.4%	51.5%	59.2%	57.4%
	Quintile 2	38.2%	51.0%	56.4%	58.1%	59.3%	55.3%
	Quintile 3	40.5%	51.9%	52.7%	57.4%	57.0%	59.2%
	Quintile 4	42.8%	55.5%	54.6%	61.4%	62.4%	62.6%
	Quintile 5	46.0%	58.2%	59.5%	65.1%	66.6%	66.7%
Average offer rate	Quintile 1	40.4%	50.7%	51.8%	53.7%	58.3%	57.1%
	Quintile 2	40.0%	52.9%	54.4%	58.3%	61.3%	58.1%
	Quintile 3	40.2%	52.8%	53.8%	58.5%	59.2%	60.3%
	Quintile 4	43.1%	55.4%	55.9%	62.0%	63.0%	63.0%
	Quintile 5	45.5%	57.6%	58.9%	64.2%	65.2%	65.6%
Percentage point difference between offer rate and average offer rate	Quintile 1	-1.4	-0.5	0.6	-2.2	0.9	0.3
	Quintile 2	-1.9	-2.0	1.9	-0.2	-2.0	-2.8
	Quintile 3	0.3	-0.9	-1.1	-1.1	-2.2	-1.1
	Quintile 4	-0.3	0.1	-1.2	-0.6	-0.7	-0.4
	Quintile 5	0.5	0.6	0.6	0.9	1.4	1.1
Contribution of group to the average offer rate	Quintile 1	0.104	0.120	0.102	0.115	0.096	0.114
	Quintile 2	0.146	0.143	0.137	0.146	0.148	0.145
	Quintile 3	0.211	0.215	0.227	0.221	0.229	0.236
	Quintile 4	0.285	0.278	0.281	0.278	0.282	0.291
	Quintile 5	0.515	0.513	0.515	0.509	0.512	0.496

P.9 18 year old offer rate by POLAR3 quintile

Note: The line for a group is not plotted when that group made fewer than 10 applications in any of the years from 2012-2017.

- Quintile 1
- Quintile 2
- Quintile 3
- Quintile 4
- Quintile 5



P.10 Percentage point difference between 18 year old offer rate and average offer rate by POLAR3 quintile

Note: The line for a group is not plotted when that group made fewer than 50 applications in any of the years from 2012-2017.

- Quintile 1
- Quintile 2
- Quintile 3
- Quintile 4
- Quintile 5



P.11 18 year old applicants by ethnic group

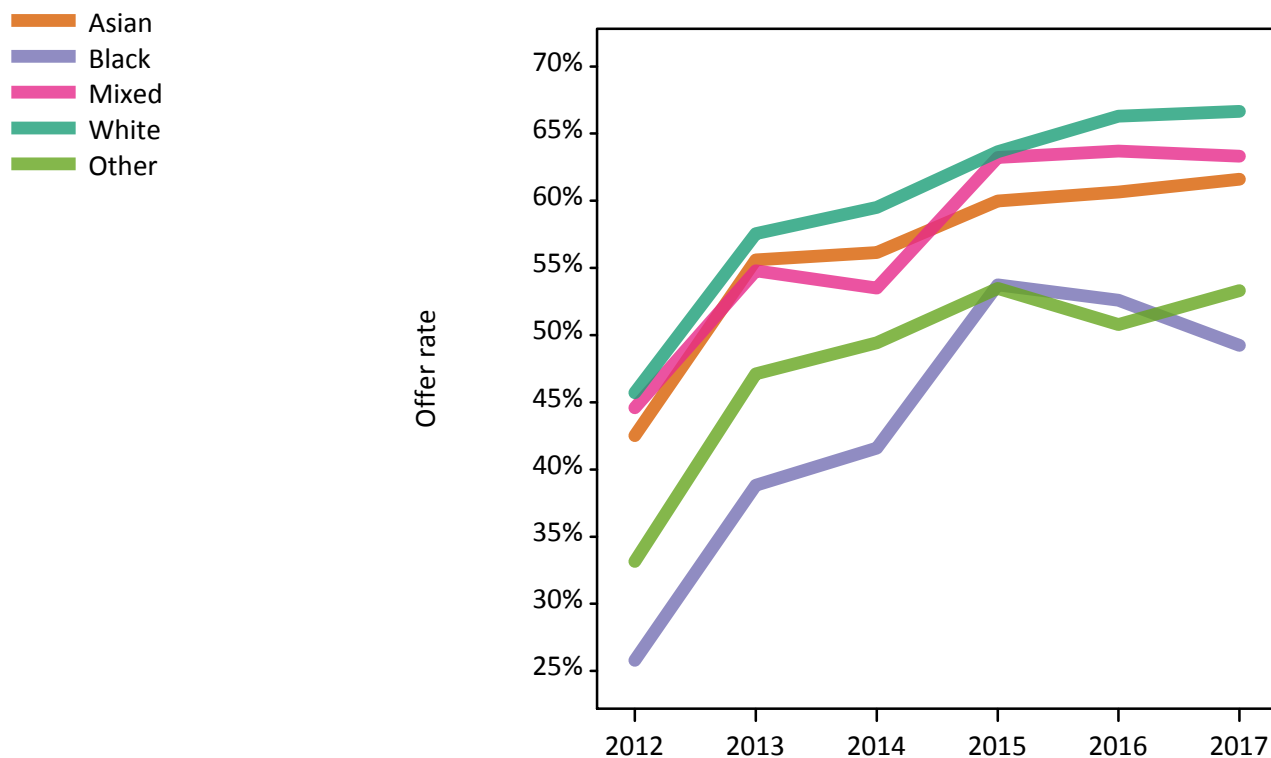
Statistic	Ethnic group	2012	2013	2014	2015	2016	2017
June deadline applicants	Asian	2,815	2,985	3,190	3,370	3,495	4,005
	Black	585	610	665	700	725	895
	Mixed	840	750	845	865	855	1,000
	White	6,870	6,760	6,820	6,730	6,265	6,475
	Other	360	345	425	425	420	580
Placed June deadline applicants	Asian	465	485	525	525	585	635
	Black	55	65	75	80	80	65
	Mixed	150	135	120	150	150	145
	White	1,075	1,145	1,120	1,020	885	885
	Other	55	55	65	65	60	85
All placed applicants	Asian	475	505	545	545	615	660
	Black	60	65	75	85	85	75
	Mixed	150	135	125	155	155	145
	White	1,080	1,155	1,140	1,035	895	900
	Other	55	55	65	65	65	90
June deadline applicants per 10,000 population	Asian	435.0	452.7	470.5	476.3	486.0	544.4
	Black	207.7	205.8	218.7	219.9	232.2	285.1
	Mixed	322.9	277.8	294.1	279.9	271.1	311.2
	White	106.4	107.4	110.6	108.0	103.6	109.1
	Other	406.8	379.4	455.5	443.0	422.1	563.1
Placed June deadline applicants per 10,000 population	Asian	72.0	73.8	77.3	73.9	81.0	86.4
	Black	20.2	22.2	24.1	25.8	26.2	21.3
	Mixed	57.2	50.3	42.4	49.3	47.7	44.5
	White	16.6	18.2	18.2	16.3	14.6	14.9
	Other	61.0	60.7	68.8	67.4	59.3	82.5
All placed applicants per 10,000 population	Asian	73.3	76.7	80.7	77.0	85.6	90.0
	Black	20.6	22.6	25.1	27.3	27.8	23.8
	Mixed	57.6	50.7	43.4	50.9	48.6	45.2
	White	16.7	18.3	18.4	16.6	14.8	15.2
	Other	62.2	62.9	69.8	68.5	65.3	87.4

P.12 18 year old applications by ethnic group

Statistic	Ethnic group	2012	2013	2014	2015	2016	2017
June deadline applications	Asian	2,910	3,080	3,290	3,475	3,630	4,145
	Black	600	620	685	720	750	925
	Mixed	870	775	875	890	875	1,025
	White	7,010	6,905	6,990	6,905	6,415	6,650
	Other	375	365	445	445	440	605
Offers	Asian	1,235	1,710	1,850	2,085	2,205	2,550
	Black	155	240	285	385	395	455
	Mixed	390	425	465	565	555	650
	White	3,205	3,975	4,160	4,395	4,255	4,430
	Other	125	170	220	240	225	320
Offer rate	Asian	42.5%	55.6%	56.1%	60.0%	60.7%	61.6%
	Black	25.8%	38.8%	41.6%	53.8%	52.6%	49.2%
	Mixed	44.6%	54.8%	53.5%	63.2%	63.7%	63.3%
	White	45.7%	57.6%	59.5%	63.7%	66.3%	66.7%
	Other	33.2%	47.1%	49.4%	53.5%	50.8%	53.3%
Average offer rate	Asian	44.3%	55.9%	56.6%	61.0%	61.5%	61.2%
	Black	29.5%	42.4%	45.3%	54.9%	55.9%	53.2%
	Mixed	43.7%	55.0%	56.7%	60.7%	63.3%	62.9%
	White	44.4%	57.1%	58.2%	63.2%	65.3%	66.0%
	Other	38.8%	46.5%	53.7%	57.0%	54.7%	55.6%
Percentage point difference between offer rate and average offer rate	Asian	-1.8	-0.4	-0.5	-1.0	-0.8	0.3
	Black	-3.8	-3.5	-3.7	-1.2	-3.3	-4.0
	Mixed	0.9	-0.2	-3.2	2.5	0.3	0.4
	White	1.3	0.5	1.4	0.5	1.0	0.6
	Other	-5.7	0.6	-4.3	-3.5	-3.9	-2.3
Contribution of group to the average offer rate	Asian	0.365	0.388	0.382	0.391	0.399	0.401
	Black	0.150	0.155	0.161	0.147	0.144	0.163
	Mixed	0.128	0.119	0.124	0.131	0.138	0.140
	White	0.660	0.666	0.643	0.632	0.608	0.581
	Other	0.131	0.118	0.118	0.111	0.114	0.119

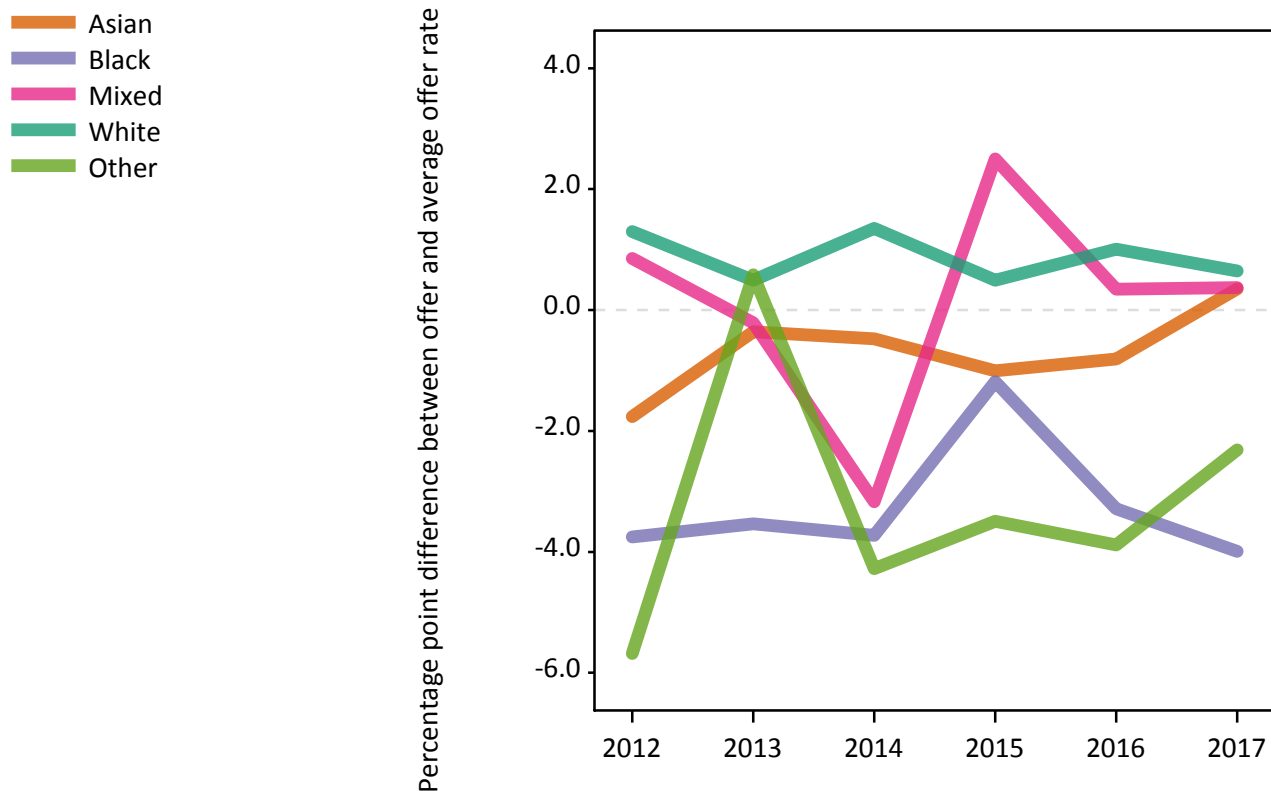
P.13 18 year old offer rate by ethnic group

Note: The line for a group is not plotted when that group made fewer than 10 applications in any of the years from 2012-2017.



P.14 Percentage point difference between 18 year old offer rate and average offer rate by ethnic group

Note: The line for a group is not plotted when that group made fewer than 50 applications in any of the years from 2012-2017.



P.15 Applicants (all ages)

Statistic	2012	2013	2014	2015	2016	2017
June deadline applicants	16,810	17,885	18,630	19,280	18,770	19,855
Placed June deadline applicants	2,495	2,810	2,825	2,875	2,760	2,860
All placed applicants	2,535	2,875	2,900	2,955	2,845	2,945

P.16 Applications (all ages)

Statistic	2012	2013	2014	2015	2016	2017
June deadline applications	17,435	18,540	19,375	20,035	19,585	20,700
Offers	6,590	8,800	9,435	10,580	10,575	11,525
Offer rate	37.8%	47.5%	48.7%	52.8%	54.0%	55.7%

P.17 Applicants (all ages) by sex

Statistic	Sex	2012	2013	2014	2015	2016	2017
June deadline applicants	Men	8,660	9,075	9,465	9,645	9,175	9,800
	Women	8,150	8,810	9,165	9,635	9,590	10,060
Placed June deadline applicants	Men	1,240	1,355	1,400	1,355	1,350	1,370
	Women	1,255	1,455	1,425	1,520	1,410	1,490
All placed applicants	Men	1,260	1,380	1,440	1,385	1,385	1,405
	Women	1,275	1,490	1,460	1,570	1,460	1,540

P.18 Applications (all ages) by sex

Statistic	Sex	2012	2013	2014	2015	2016	2017
June deadline applications	Men	9,000	9,420	9,840	9,995	9,560	10,210
	Women	8,430	9,120	9,540	10,045	10,025	10,490
Offers	Men	3,525	4,545	4,890	5,195	5,145	5,725
	Women	3,070	4,255	4,545	5,385	5,430	5,795
Offer rate	Men	39.1%	48.3%	49.7%	52.0%	53.8%	56.1%
	Women	36.4%	46.6%	47.7%	53.6%	54.2%	55.3%

P.19 Applicants (all ages) by POLAR3 quintile

Statistic	POLAR3 quintile	2012	2013	2014	2015	2016	2017
June deadline applicants	Quintile 1	715	810	835	855	825	995
	Quintile 2	1,410	1,575	1,585	1,700	1,655	1,680
	Quintile 3	2,780	3,070	3,295	3,365	3,340	3,650
	Quintile 4	4,065	4,270	4,445	4,645	4,510	4,745
	Quintile 5	7,750	8,080	8,400	8,615	8,355	8,675
Placed June deadline applicants	Quintile 1	90	120	115	90	110	105
	Quintile 2	170	230	255	235	190	220
	Quintile 3	355	435	435	465	420	465
	Quintile 4	610	690	635	685	650	655
	Quintile 5	1,260	1,335	1,365	1,380	1,380	1,395
All placed applicants	Quintile 1	90	120	120	95	110	115
	Quintile 2	175	230	260	245	195	225
	Quintile 3	360	450	450	480	435	475
	Quintile 4	625	705	655	705	685	675
	Quintile 5	1,280	1,360	1,405	1,410	1,410	1,430

P.20 Applications (all ages) by POLAR3 quintile

Statistic	POLAR3 quintile	2012	2013	2014	2015	2016	2017
June deadline applications	Quintile 1	740	845	865	880	845	1,030
	Quintile 2	1,455	1,615	1,645	1,765	1,720	1,720
	Quintile 3	2,880	3,200	3,435	3,480	3,495	3,790
	Quintile 4	4,215	4,415	4,620	4,830	4,700	4,945
	Quintile 5	8,040	8,385	8,730	8,975	8,725	9,095
Offers	Quintile 1	230	345	390	375	400	510
	Quintile 2	470	710	805	865	845	840
	Quintile 3	955	1,330	1,470	1,655	1,670	1,920
	Quintile 4	1,590	2,060	2,140	2,510	2,495	2,710
	Quintile 5	3,325	4,335	4,600	5,130	5,125	5,485
Offer rate	Quintile 1	31.2%	41.1%	44.8%	42.9%	47.5%	49.4%
	Quintile 2	32.2%	44.1%	48.8%	49.0%	49.0%	48.9%
	Quintile 3	33.2%	41.6%	42.8%	47.5%	47.7%	50.6%
	Quintile 4	37.7%	46.6%	46.3%	52.0%	53.1%	54.8%
	Quintile 5	41.3%	51.7%	52.7%	57.2%	58.7%	60.3%

P.21 Applicants (all ages) by ethnic group

Statistic	Ethnic group	2012	2013	2014	2015	2016	2017
June deadline applicants	Asian	3,905	4,355	4,705	5,010	5,170	5,685
	Black	1,035	1,220	1,285	1,350	1,385	1,560
	Mixed	1,165	1,185	1,255	1,365	1,320	1,485
	White	9,850	10,210	10,375	10,420	9,765	9,810
	Other	570	615	735	780	755	920
Placed June deadline applicants	Asian	640	660	695	765	830	915
	Black	80	110	130	155	150	140
	Mixed	195	200	170	220	220	210
	White	1,485	1,705	1,700	1,590	1,425	1,425
	Other	75	90	95	95	90	135
All placed applicants	Asian	655	685	725	795	875	950
	Black	80	115	135	160	155	150
	Mixed	195	200	175	230	225	215
	White	1,490	1,720	1,730	1,615	1,445	1,450
	Other	75	95	100	100	100	145

P.22 Applications (all ages) by ethnic group

Statistic	Ethnic group	2012	2013	2014	2015	2016	2017
June deadline applications	Asian	4,070	4,530	4,895	5,215	5,410	5,945
	Black	1,065	1,245	1,330	1,395	1,445	1,625
	Mixed	1,205	1,235	1,305	1,425	1,385	1,550
	White	10,175	10,565	10,760	10,815	10,150	10,200
	Other	605	655	785	810	800	965
Offers	Asian	1,625	2,220	2,405	2,785	2,940	3,375
	Black	215	365	440	570	590	675
	Mixed	470	580	615	755	740	860
	White	4,015	5,235	5,550	5,935	5,775	5,960
	Other	170	255	315	345	330	445
Offer rate	Asian	40.0%	49.0%	49.1%	53.4%	54.4%	56.8%
	Black	20.1%	29.4%	33.1%	40.9%	40.8%	41.5%
	Mixed	39.0%	46.9%	47.0%	52.8%	53.4%	55.6%
	White	39.4%	49.6%	51.6%	54.9%	56.9%	58.4%
	Other	27.9%	39.1%	40.5%	42.7%	41.0%	46.0%

Technical Notes and Definitions

UCAS undergraduate scheme

Adjustment

Adjustment allows applicants who have met and exceeded the terms of their conditional firm offer to seek and find a place at another provider whilst keeping their place at their original firm choice provider.

Clearing

Clearing is a route for applicants that are not placed and holding no offers to find a place on courses with vacancies.

Cycle year

The UCAS application cycle which runs from September to October the following year. For example the 2017 cycle runs from September 2016 through to October 2017.

End of cycle

The point in the cycle to which the numbers in this report refer, and the point at which the cycle is closed such that no more applications or offers can be made, and no more applicants can be placed. Numbers reported at the end of cycle exclude information on a small number of applicants who cancelled during the cycle.

Extra

Applicants who are unsuccessful in obtaining an offer or decline all offers may be eligible to apply through Extra, where they can apply to one further course at a time. Extra operates from 25 February until early July. It provides applicants who are eligible the possibility of obtaining an offer before exam results are published and Clearing starts.

June 30 deadline

The deadline for main scheme applications. Applicants who apply after this date will go directly into Clearing.

Record of Prior Acceptance (RPA)

RPA is an acceptance route used when a provider informs UCAS of applicants it has accepted outside of the normal application process (e.g. individuals who have applied directly to the provider).

Reporting groups

Ethnic group

High level grouping of ethnic origin as declared by the applicant: 'White', 'Black', 'Asian', 'Mixed', 'Other', 'Unknown'. Applicants who declare themselves as 'Unknown' ethnic origin are not reported in these tables, but are included in the associated csv data file.

POLAR3 quintile

Developed by HEFCE, POLAR3 classifies small areas across the UK into five groups according to their level of young participation in Higher Education. Each of these groups represents around 20 per cent of young people and is ranked from Quintile 1 (areas with the lowest young participation rates, considered as the most disadvantaged) to Quintile 5 (highest young participation rates, considered most advantaged). POLAR3 is based on the participation rates of young people between 2005 and 2009 who entered Higher Education between 2005-06 and 2010-11, therefore is most suitable for applicants aged 19 and under. These groups are assigned using the postcode declared by the applicant at the time of their application. If a UK postcode is invalid, considered unsafe for measurement or there is no link to Census geography possible then the applicant is not assigned to a quintile. Applicants with no POLAR3 quintile are not reported.

Sex

Sex as declared by the applicant.

SIMD 2016 quintile

Scottish index of multiple deprivation (SIMD) identifies small area concentrations of multiple deprivation across all of Scotland, providing a relative measure of deprivation amongst 6505 small areas (data zones) based on 7 socio-economic domains. These small areas are classified into five groups ranked from Quintile 1 (considered the most deprived) to Quintile 5 (considered least deprived), with equal populations in each quintile. Quintiles are assigned using the postcode declared by the applicant, applicants declaring invalid postcodes are classified as 'Not assigned' and are not reported.

SIMD is only defined for applicants domiciled in Scotland, therefore any applicants domiciled outside of Scotland cannot be assigned to an SIMD quintile and so are not reported for this measure.

SIMD is only reported for providers in Scotland. Application and entry rates by SIMD are reported in the 2017 End of Cycle Report and the 2017 cycle January deadline application rate report.

Statistics reported in the tables

All placed applicants

The number of applicants placed for entry into higher education at the provider through one of their choices, including any choices made through Extra, or via Adjustment, Clearing or RPA.

All placed applicants per 10,000 population

The number of total UK domiciled 18 year old placed applicants for entry into higher education at the provider divided by the number of UK 18 year olds in the population, multiplied by 10,000. This gives the number of 18 year olds, for every 10,000 in the population, that were placed at the provider through one of their choices, including any choices made through Extra, or via Adjustment, Clearing or RPA. It is an alternative way of expressing the entry rate to a provider. By referencing the underlying population this statistic shows how the number of placed applicants is changing in relation to the available pool of potential applicants and so gives the chance that somebody from the group will be placed at a provider.

This statistic is only reported for 18 year olds.

Average offer rate

The offer rate that you might expect if the predicted grades and subject choice of applicants were the only factors that influenced whether an applicant was made an offer by the provider. The average offer rate is calculated by dividing applicants according to their specific combination of grades (for A levels the best three predicted grades are used, for BTECs, International Baccalaureate and Scottish Highers and Advanced Highers, predicted grades along with any grades already achieved upon applying are used) and subject choice. For each combination the number of main scheme offers is divided by the number of main scheme applications, to give an overall offer rate. This is then multiplied by the number of applications made by the group for which the average offer rate is being calculated (for example POLAR3 quintile 1), to give an average number of offers for that group. These average number of offers are then added together across all combinations of predicted grade and subject and divided by the number of main scheme applications from the group to give the average offer rate.

The average offer rate does not attempt to control for any other factors that may play a part in the decision to make an offer, such as the subject of the qualifications studied, their relevance to a course, or the grade in each subject; higher numbers of A levels being studied; the exact profile of grades predicted; personal statements; teacher references; interviews; or any other criteria (such as work experience or portfolios) that may be part of the admissions decision.

This statistic is only reported for 18 year olds.

Contribution of group to the average offer rate

The way in which the average offer rate is defined means that the pattern of application and offers of a group (for example POLAR3 quintile 1) will always contribute, in part, to the average offer rate for that group. When this contribution is large, the average offer rate will mainly reflect the patterns for the group, meaning that the value of the average offer rate will be similar to the offer rate, the percentage point difference statistic will be small, and any real difference between the offer rate and what might be expected given the predicted grades and subject choices of the applicants will be difficult to detect.

Values of the contribution of group to the average offer rate range between 0 and 1. The closer the value is to 1 the greater the contribution a group makes to its own average offer rate.

This statistic is only reported for 18 year olds.

Placed June deadline applicants

An applicant who has been placed for entry into higher education at the provider through a June deadline application.

Placed June deadline applicants per 10,000 population

The number of UK domiciled 18 year old placed June deadline applicants at the provider divided by the number of UK 18 year olds in the population, multiplied by 10,000. This gives the number of 18 year olds, for every 10,000 in the population, that were placed at the provider through one of their June deadline applications. It is an alternative way of expressing the entry rate to a provider, but for placed June deadline applicants only. By referencing the underlying population this statistic shows how the number of placed June deadline applicants is changing in relation to the available pool of potential 18 year old applicants and so gives the chance that somebody from the group will be placed at a provider through a June deadline application.

This statistic is only reported for 18 year olds.

June deadline applications

An application (or choice) to a course in higher education to the provider that is made by the June 30 deadline. Each applicant can make up to five choices this way. The number of June deadline applications does not include choices made through the following routes: Clearing, Extra, Adjustment and RPAs. Applications made to October deadline courses received after the October deadline are not included in these statistics.

June deadline applicants

The number of applicants that made at least one application to the provider by the June 30 deadline.

June deadline applicants per 10,000 population

The number of UK domiciled 18 year old June deadline applicants to the provider divided by the number of UK 18 year olds in the population, multiplied by 10,000. This gives the number of 18 year olds, for every 10,000 in the population, who applied by the June 30 deadline. It is equivalent to the application rate. By referencing the underlying population this statistic shows how the number of June deadline applicants is changing in relation to the available pool of potential 18 year old applicants and so gives the chance that somebody from the group will apply to a provider by the June 30 deadline.

This statistic is only reported for 18 year olds.

Offers

An offer is defined as a provider's decision in response to an application to offer a place to an applicant, often subject to the applicant satisfying academic and/or other criteria, via a June deadline application (i.e. does not cover choices made through the following routes: Clearing, Extra, Adjustment and RPAs).

Offer rate

The number of offers made divided by the number of June deadline applications. This gives the proportion of all June deadline applications to the provider that received an offer.

Percentage point difference between offer rate and average offer rate

The offer rate minus the average offer rate.

The percentage point difference can be compared to the expected range of statistical variation resulting from the calculation of the average offer rate using the Average Offer Rate Lookup Table. Where the value of the percentage point difference lies outside of this range, the percentage point difference may be considered to represent a real difference between the offer rate and the average offer rate.

Other definitions

Age

This analysis uses country-specific age definitions that align with the cut off points for school and college cohorts within the different administrations of the UK. For England and Wales, ages are defined on the 31 August, for Northern Ireland on the 1 July and for Scotland on the 28 February the following year. Defining ages in this way matches the assignment of children to school cohorts. For applicants outside of the UK a cohort cut off of 31 August has been used. Numbers for applicants aged 17 and under are included in the tables that report numbers for all age groups. Providers in Scotland typically receive a higher proportion of applicants aged 17 and under compared to providers elsewhere in the UK.

Provider

A higher education provider - a university or college.

UK domiciled

Declared area of permanent residence within England, Northern Ireland, Scotland and Wales. Applicants from the Channel Islands and Isle of Man are not included.