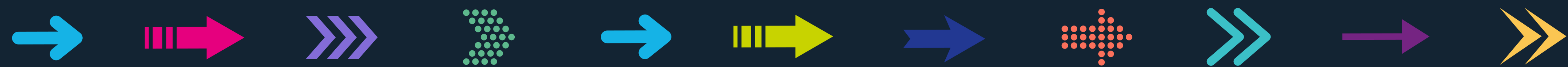


GUIDING STUDENTS IN CHOOSING LEVEL THREE SUBJECTS



PETER DERRICK, IMPERIAL COLLEGE LONDON

CARYS WILLGOSS, UCAS

JULIE HYDE, NCFE

IMPERIAL

Guiding Students in Choosing Level Three Subjects

A view from a selective institution

Entry Requirements

The range of practice

Minimum entry standard

AAA

To include:

- **A** in Chemistry
- **A** in Mathematics
- **A** in a third subject (Biology, Economics, and Physics are preferred)

Not accepted: General Studies and Critical Thinking

Science Practical Endorsement: If you are made an offer you will be required to achieve a pass in the practical component of the practical subjects that form part of the

Standard entry requirement

The standard entry requirement is:

- SQA Highers: AAAB by end of S5 or AAAA by end of S6. BBB must be achieved in one year of S4-S6.
- A Levels: AAA - ABB in one set of exams.
- IB: 37 points with 666 at HL - 32 points with 655 at HL.

Minimum entry requirement

The minimum entry requirement for widening access applicants is:

- SQA Highers: AABB by end of S6. BBB must be achieved in one year of S4-S6.
- A Levels: ABB.
- IB: 32 points with 655 at HL.

[More information for widening access applicants](#)

Required subjects

The grades used to meet our entry requirements must include:

- SQA: Highers: Mathematics at A and Chemistry at B. Higher Applications of Mathematics is not accepted in place of Higher Mathematics. Advanced Higher Mathematics and Chemistry are recommended. National 5s: English at C.
- A Levels: Chemistry and Mathematics at B. GCSEs: English at C or 4.
- IB: HL: Chemistry and Mathematics (Analysis and approaches only) at 5. SL: English at 5 and Mathematics (Analysis and approaches only) at 6 (if not at HL).

A levels	IB Diploma	Other qualifications
Grades		
AAA		
Subjects		
Chemistry and at least one of Biology, Physics and Mathematics required. Biology, Physics or Mathematics preferred as third subject.		
GCSEs		
English Language at grade C or 4, plus Mathematics at grade B or 6.		
Contextual offer information		
Grades		
ABB more about contextual offers		
Subjects		
A in Chemistry, B in Biology, Mathematics or Physics. Biology, Mathematics or Physics preferred as third subject.		
GCSEs		
English Language at grade C or 4, plus Mathematics at grade B or 6.		

A-levels

AAB including chemistry or ABB including chemistry and one additional science subject

A-levels additional information

Accepted A-level science subjects include biology, human biology, physics, mathematics, further mathematics, psychology, geography and geology. General Studies, Critical Thinking and use of mathematics are excluded for entry. A pass in all science practical components is required where applicable.

Entry Requirements

Compulsory/Required subjects

To include:

- **A** in Chemistry
- **A** in Mathematics
- **A** in a third subject (Biology, Economics, and Physics are preferred)

Not accepted: General Studies and Critical Thinking

Science Practical Endorsement: If you are made an offer you will be required to achieve a pass in the practical endorsement in all science subjects that form part of the offer.

Some subjects are required for study because the knowledge is needed before the student takes up the course.

Without a compulsory subject applicants can't be considered for an offer.

Grades
AAA

Subjects
Chemistry and at least one of Biology, Physics and Mathematics required. Biology, Physics or Mathematics preferred as third subject.

GCSEs
English Language at grade C or 4, plus Mathematics at grade B or 6.

Contextual offer information

Grades
ABB [more about contextual offers](#)

Subjects
A in Chemistry, B in Biology, Mathematics or Physics. Biology, Mathematics or Physics preferred as third subject.

GCSEs
English Language at grade C or 4, plus Mathematics at grade B or 6.

A-levels

AAB **including chemistry** or ABB including chemistry and one additional science subject

A-levels additional information

Accepted A-level science subjects include biology, human biology, physics, mathematics, further mathematics, psychology, geography and geology. General Studies, Critical Thinking and use of mathematics are excluded for entry. A pass in all science practical components is required where applicable.

Entry Requirements

Preferred subjects

To include:

- **A** in Chemistry
- **A** in Mathematics
- **A** in a third subject (Biology, Economics, and Physics are preferred)

Not accepted: General Studies and Critical Thinking

Science Practical Endorsement: If you are made an offer you will be required to achieve a pass in the practical endorsement in all science subjects that form part of the offer.

Preferred subject are ‘expected’ to be offered by the applicant.

Whilst applicants may be considered if they are not offering a preferred subject, their application would be considered a weaker fit for the course.

Grades

AAA

Subjects

Chemistry and at least one of Biology, Physics and Mathematics required. **Biology, Physics or Mathematics preferred as third subject.**

GCSEs

English Language at grade C or 4, plus Mathematics at grade B or 6.

Contextual offer information

Grades

ABB [more about contextual offers](#)

Subjects

A in Chemistry, B in Biology, Mathematics or Physics. Biology, Mathematics or Physics preferred as third subject.

GCSEs

English Language at grade C or 4, plus Mathematics at grade B or 6.

A-levels

AAB including chemistry or ABB including chemistry and one additional science subject

A-levels additional information

Accepted A-level science subjects include biology, human biology, physics, mathematics, further mathematics, psychology, geography and geology. General Studies, Critical Thinking and use of mathematics are excluded for entry. A pass in all science practical components is required where applicable.

In this example the institution has gone further, and defined a list of ‘accepted’ subjects they would expect to see as the additional subject.

Entry Requirements

Excluded subjects

To include:

- **A** in Chemistry
- **A** in Mathematics
- **A** in a third subject (Biology, Economics, and Physics are preferred)

Not accepted: General Studies and Critical Thinking

Science Practical Endorsement: If you are made an offer you will be required to achieve a pass in the practical endorsement in all science subjects that form part of the offer.

Excluded subjects are never considered for use in meeting the entry requirements.

If not specified on the subject page, there will be information elsewhere on the institution website.

Grades
AAA

Subjects
Chemistry and at least one of Biology, Physics and Mathematics required. Biology, Physics or Mathematics preferred as third subject.

GCSEs
English Language at grade C or 4, plus Mathematics at grade B or 6.

Contextual offer information

Grades
ABB [more about contextual offers](#)

Subjects
A in Chemistry, B in Biology, Mathematics or Physics. Biology, Mathematics or Physics preferred as third subject.

?

Exceptions

General Studies, Critical Thinking or Global Perspectives and Research are not accepted for admission. We will not count these subjects towards our entry requirements.

A-levels

AAB including chemistry or ABB including chemistry and one additional science subject

A-levels additional information

Accepted A-level science subjects include biology, human biology, physics, mathematics, further mathematics, psychology, geography and geology. General Studies, Critical Thinking and use of mathematics are excluded for entry. A pass in all science practical components is required where applicable.

Whilst General Studies and Critical Thinking are often not acceptable as subjects when meeting the terms of their offer, they can be useful for applicants to develop their writing skills and approach to study.

Entry Requirements

Science Practical Endorsement

To include:

- **A** in Chemistry
- **A** in Mathematics
- **A** in a third subject (Biology, Economics, and Physics are preferred)

Not accepted: General Studies and Critical Thinking

Science Practical Endorsement: If you are made an offer you will be required to achieve a pass in the practical endorsement in all science subjects that form part of the offer.

The vast majority of institutions ask for a pass in the science practical endorsements (where relevant of the qualification).

If not specified on the subject page, there will be information elsewhere on the institution website.

Grades

AAA

Subjects

Chemistry and at least one of Biology, Physics and Mathematics required. Biology, Physics or Mathematics preferred as third subject.

GCSEs

English Language at grade C or 4, plus Mathematics at grade B or 6.

Contextual offer information

Grades

ABB [more about contextual offers](#)

Subjects

A in Chemistry, B in Biology, Mathematics or Physics. Biology, Mathematics or Physics preferred as third subject.



A-levels

AAB including chemistry or ABB including chemistry and one additional science subject

A-levels additional information

Accepted A-level science subjects include biology, human biology, physics, mathematics, further mathematics, psychology, geography and geology. General Studies, Critical Thinking and use of mathematics are excluded for entry. A pass in all science practical components is required where applicable.

Science practical endorsement

If you are studying Biology, Chemistry or Physics A Levels in England, a pass in the practical endorsement is required.

If you are a self-studying student and cannot take the practical science component, you must provide a reason for this. This will be considered on a case-by-case basis.

The Extended Project Qualification

Is it recognised in for entry?

The EPQ is a single piece of work that requires evidence of planning, preparation, research and independent learning. Comparisons have been drawn to the Extended Essay as part of the IB, however, unlike the IB component of the overall Diploma group qualification, it is a standalone qualification.

These are skills that are valuable for studying at university.

Some universities will make a lower grade offer if the applicant has a good grade in the EPQ, for example A level grade offer AAA might be altered to A level grade offer AAB and A in EPQ.

Even if it is not part of the offer, it can be used in personal statement preparation or at interview to demonstrate the applicant's interest or aptitude in the subject.

GCSE/Level 2 study

The range of practice

GCSEs: If you have taken GCSEs, these will be taken into account when we assess your application. All applicants are expected to have at least grade B/grade 6 in GCSE English Language and Mathematics.

As competition for places at is intense, we look for applicants who have achieved a strong set of GCSE grades overall, including a majority at A (7) and A* (8-9). Some programmes have additional requirements, and these are outlined in the individual programme pages. More information on GCSEs can be found [here](#).

GCSE and equivalent qualifications

All programmes require a grade 4 or higher in English Language and Mathematics at GCSE or equivalent. Some programmes require higher grades or additional GCSE passes. Please check the requirements of each individual programme carefully.

If you haven't met the GCSE requirements for the programme you are interested in, please contact us for further advice.

▼ GCSEs

There are no GCSE (or equivalent) requirements for entry to

We will look at your GCSE results as an indicator of your academic performance. But this will be within the context of the performance of the school/college where you achieved your GCSEs.

GCSE grades

In assessing your academic potential, we review all the material information available to us from your UCAS application.

However, our entry requirements are based on A-level or equivalent level qualifications.

The only GCSE grade that we may consider with respect to entry requirements is your English language grade if you are using the results of this qualification to show that you meet our [required English language standard for entry](#), or a relevant modern foreign language for courses with a year abroad.

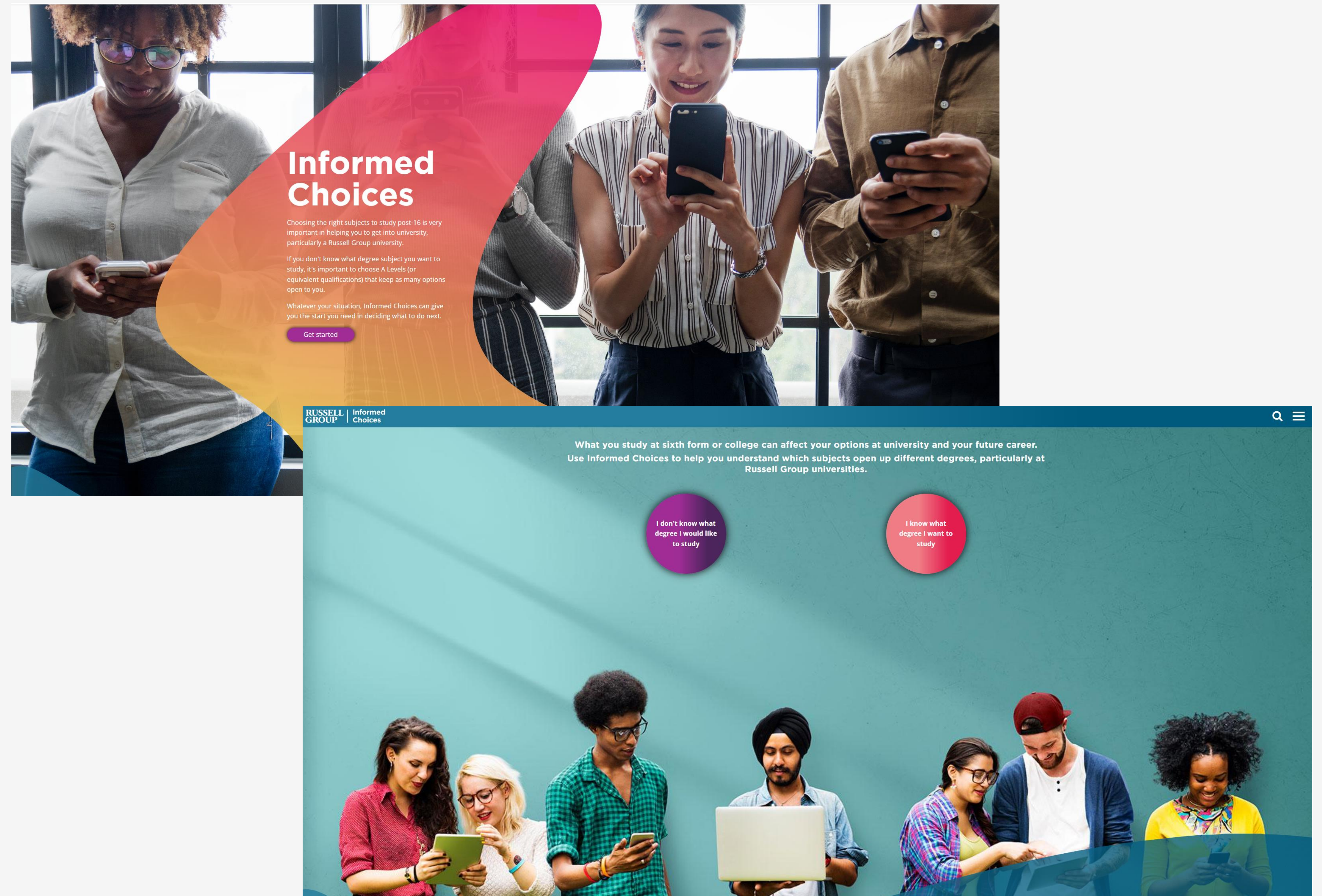
Supporting Students

Guidance from the Russell Group

Informed Choices website from the Russell Group has been developed by admissions staff from the member institutions.

It has been developed to help pupils, parents and teachers find out more about how subjects taken at sixth form or college can affect students' options at university and later on.

Find out more at
www.informedchoices.ac.uk



Questions

An opportunity for you to ask about
your burning topics