

Applicants by sex and age at the 15 January deadline

D.2.1 Applicants by sex : All domiciles

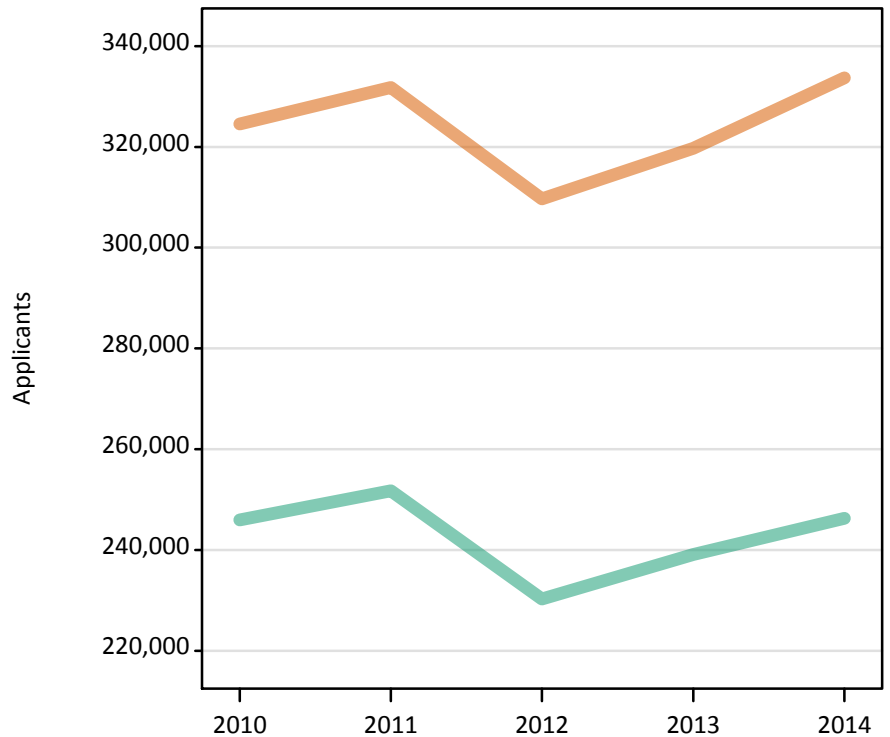
Difference between cycle and 2013 cycle

Men
Women



D.2.2 Applicants by sex : All domiciles

Men
Women



D.2.3 Applicants by age and sex : All domiciles

Age group and sex of applicant		2010	2011	2012	2013	2014
Under 18	Women	4,440	4,480	4,510	4,760	5,470
	Men	2,970	3,100	3,300	3,630	3,970
18	Women	160,110	160,790	157,520	160,080	165,310
	Men	127,540	127,470	122,710	125,210	129,310
19	Women	61,220	65,890	56,650	62,460	65,030
	Men	51,820	55,500	47,000	52,080	53,000
20-24	Women	56,490	58,280	52,890	54,790	58,010
	Men	44,070	46,080	40,250	41,480	42,740
25-29	Women	17,160	17,330	15,560	15,970	16,790
	Men	9,280	9,220	7,850	8,110	8,230
30-34	Women	9,540	9,860	9,090	8,950	9,310
	Men	4,250	4,470	3,870	3,670	3,750
35 and over	Women	15,580	15,170	13,510	12,720	13,790
	Men	6,050	5,900	5,330	4,900	5,310
All ages	Women	324,540	331,800	309,720	319,740	333,700
	Men	245,970	251,730	230,300	239,080	246,300

D.2.4 Applicants by age and sex : All domiciles

Difference between cycle and 2013 cycle

Age group and sex of applicant		2010	2011	2012	2013	2014
Under 18	Women	-7%	-6%	-5%	0%	15%
	Men	-18%	-15%	-9%	0%	9%
18	Women	0%	0%	-2%	0%	3%
	Men	2%	2%	-2%	0%	3%
19	Women	-2%	5%	-9%	0%	4%
	Men	-1%	7%	-10%	0%	2%
20-24	Women	3%	6%	-3%	0%	6%
	Men	6%	11%	-3%	0%	3%
25-29	Women	7%	8%	-3%	0%	5%
	Men	14%	14%	-3%	0%	1%
30-34	Women	7%	10%	2%	0%	4%
	Men	16%	22%	5%	0%	2%
35 and over	Women	23%	19%	6%	0%	8%
	Men	23%	20%	9%	0%	8%
All ages	Women	2%	4%	-3%	0%	4%
	Men	3%	5%	-4%	0%	3%

D.2.5 Applicants by sex : UK

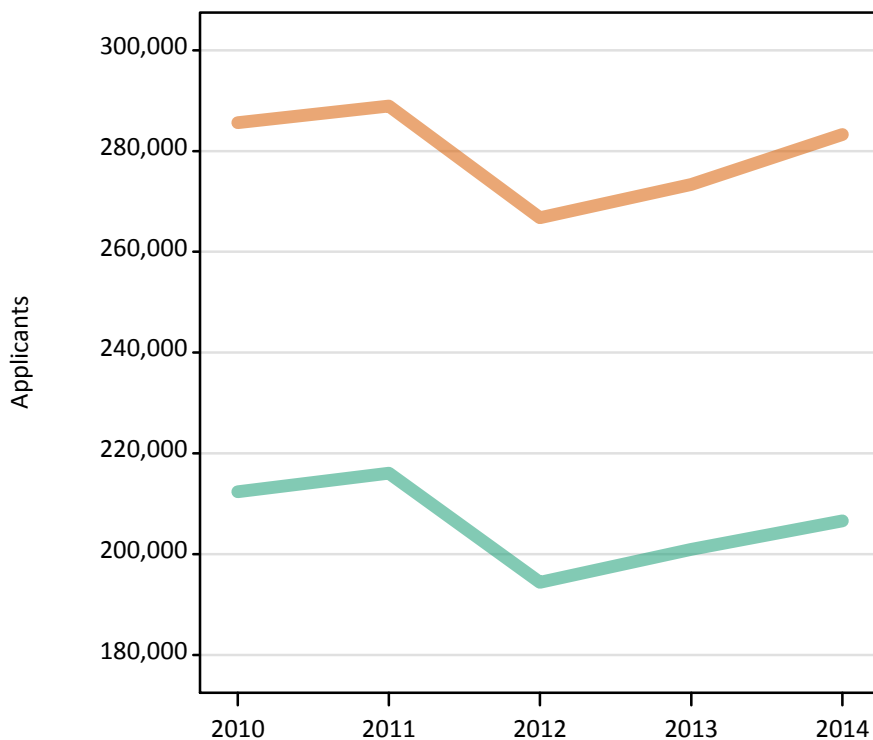
Difference between cycle and 2013 cycle

Men
Women



D.2.6 Applicants by sex : UK

Men
Women



D.2.7 Applicants by age and sex : UK

Age group and sex of applicant		2010	2011	2012	2013	2014
Under 18	Women	1,380	1,230	1,000	870	920
	Men	850	820	700	650	650
18	Women	146,510	145,910	141,980	142,710	146,380
	Men	116,950	116,330	110,620	111,990	115,040
19	Women	50,370	53,500	44,230	49,230	50,700
	Men	42,600	45,210	37,000	41,580	42,280
20-24	Women	47,030	47,870	43,110	44,580	47,130
	Men	34,580	36,140	30,790	31,750	32,960
25-29	Women	15,880	15,980	14,460	14,830	15,650
	Men	7,860	7,870	6,700	6,980	7,200
30-34	Women	9,160	9,500	8,750	8,650	9,020
	Men	3,820	4,070	3,520	3,330	3,430
35 and over	Women	15,290	14,920	13,260	12,500	13,540
	Men	5,720	5,630	5,070	4,650	5,080
All ages	Women	285,610	288,910	266,790	273,380	283,310
	Men	212,380	216,070	194,390	200,930	206,630

D.2.8 Applicants by age and sex : UK

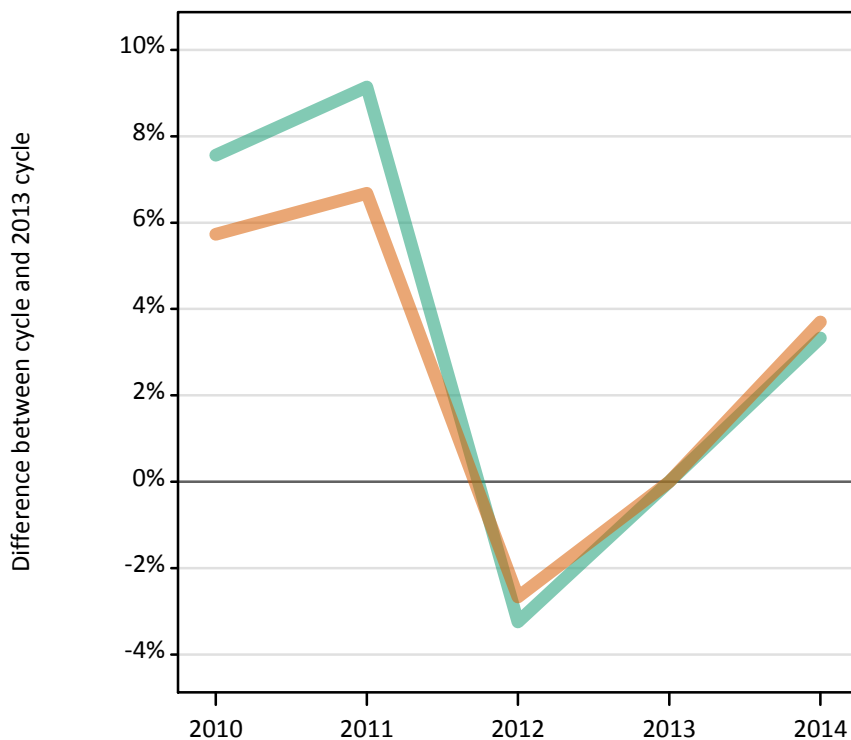
Difference between cycle and 2013 cycle

Age group and sex of applicant		2010	2011	2012	2013	2014
Under 18	Women	58%	41%	15%	0%	5%
	Men	31%	25%	7%	0%	-1%
18	Women	3%	2%	-1%	0%	3%
	Men	4%	4%	-1%	0%	3%
19	Women	2%	9%	-10%	0%	3%
	Men	2%	9%	-11%	0%	2%
20-24	Women	5%	7%	-3%	0%	6%
	Men	9%	14%	-3%	0%	4%
25-29	Women	7%	8%	-3%	0%	5%
	Men	13%	13%	-4%	0%	3%
30-34	Women	6%	10%	1%	0%	4%
	Men	15%	22%	6%	0%	3%
35 and over	Women	22%	19%	6%	0%	8%
	Men	23%	21%	9%	0%	9%
All ages	Women	4%	6%	-2%	0%	4%
	Men	6%	8%	-3%	0%	3%

D.2.9 Applicants by sex : England

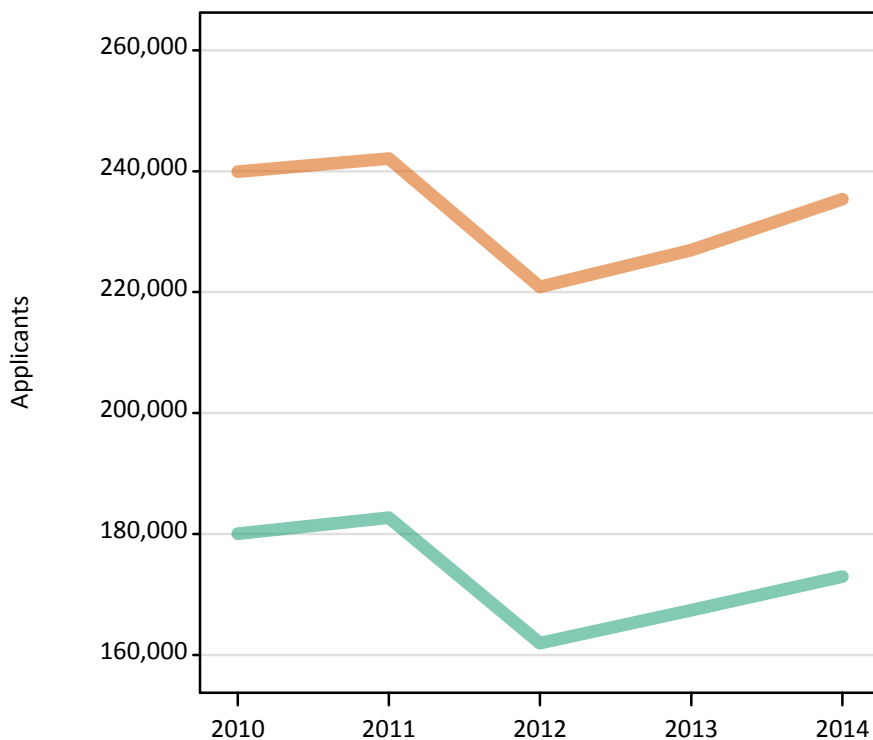
Difference between cycle and 2013 cycle

Men
Women



D.2.10 Applicants by sex : England

Men
Women



D.2.11 Applicants by age and sex : England

Age group and sex of applicant		2010	2011	2012	2013	2014
Under 18	Women	740	640	480	440	490
	Men	470	440	370	360	380
18	Women	121,800	121,800	117,840	119,000	122,250
	Men	98,400	98,030	92,950	94,190	97,170
19	Women	44,300	46,690	37,610	42,490	43,830
	Men	37,950	40,050	32,000	36,470	37,070
20-24	Women	38,950	39,050	34,500	35,310	37,440
	Men	28,900	29,860	24,380	24,610	25,920
25-29	Women	13,220	13,150	11,770	11,960	12,490
	Men	6,300	6,150	5,190	5,340	5,510
30-34	Women	7,830	8,000	7,370	7,170	7,420
	Men	3,170	3,350	2,790	2,600	2,700
35 and over	Women	13,110	12,790	11,330	10,580	11,440
	Men	4,850	4,800	4,270	3,830	4,210
All ages	Women	239,950	242,120	220,890	226,950	235,350
	Men	180,040	182,680	161,950	167,380	172,950

D.2.12 Applicants by age and sex : England

Difference between cycle and 2013 cycle

Age group and sex of applicant		2010	2011	2012	2013	2014
Under 18	Women	66%	45%	7%	0%	9%
	Men	33%	22%	3%	0%	6%
18	Women	2%	2%	-1%	0%	3%
	Men	4%	4%	-1%	0%	3%
19	Women	4%	10%	-11%	0%	3%
	Men	4%	10%	-12%	0%	2%
20-24	Women	10%	11%	-2%	0%	6%
	Men	17%	21%	-1%	0%	5%
25-29	Women	11%	10%	-2%	0%	4%
	Men	18%	15%	-3%	0%	3%
30-34	Women	9%	12%	3%	0%	3%
	Men	22%	29%	7%	0%	4%
35 and over	Women	24%	21%	7%	0%	8%
	Men	27%	25%	12%	0%	10%
All ages	Women	6%	7%	-3%	0%	4%
	Men	8%	9%	-3%	0%	3%

D.2.13 Applicants by sex : Northern Ireland

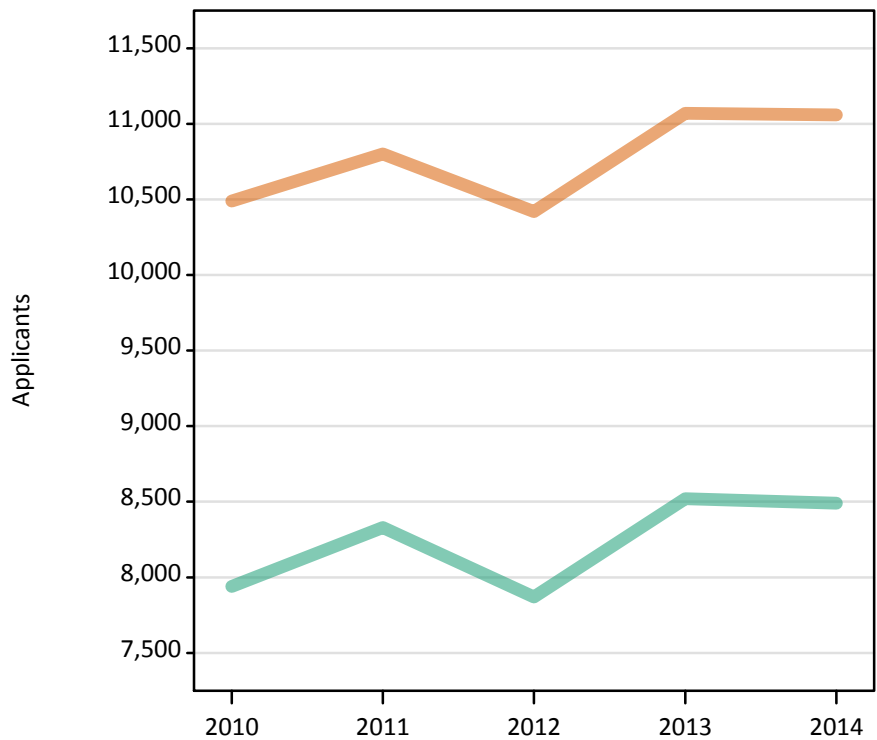
Difference between cycle and 2013 cycle

Men
Women



D.2.14 Applicants by sex : Northern Ireland

Men
Women



D.2.15 Applicants by age and sex : Northern Ireland

Age group and sex of applicant		2010	2011	2012	2013	2014
Under 18	Women	30	30	30	20	20
	Men	20	20	20	20	10
18	Women	6,830	6,710	6,680	6,520	6,390
	Men	5,190	5,180	4,970	5,150	5,070
19	Women	1,290	1,610	1,420	1,610	1,620
	Men	1,060	1,290	1,130	1,260	1,340
20-24	Women	1,510	1,610	1,550	1,860	1,950
	Men	1,230	1,360	1,340	1,620	1,620
25-29	Women	420	440	380	530	550
	Men	250	290	230	280	240
30-34	Women	160	170	160	250	250
	Men	90	90	90	100	100
35 and over	Women	250	240	190	290	290
	Men	100	100	100	110	110
All ages	Women	10,490	10,800	10,420	11,070	11,060
	Men	7,940	8,330	7,870	8,520	8,490

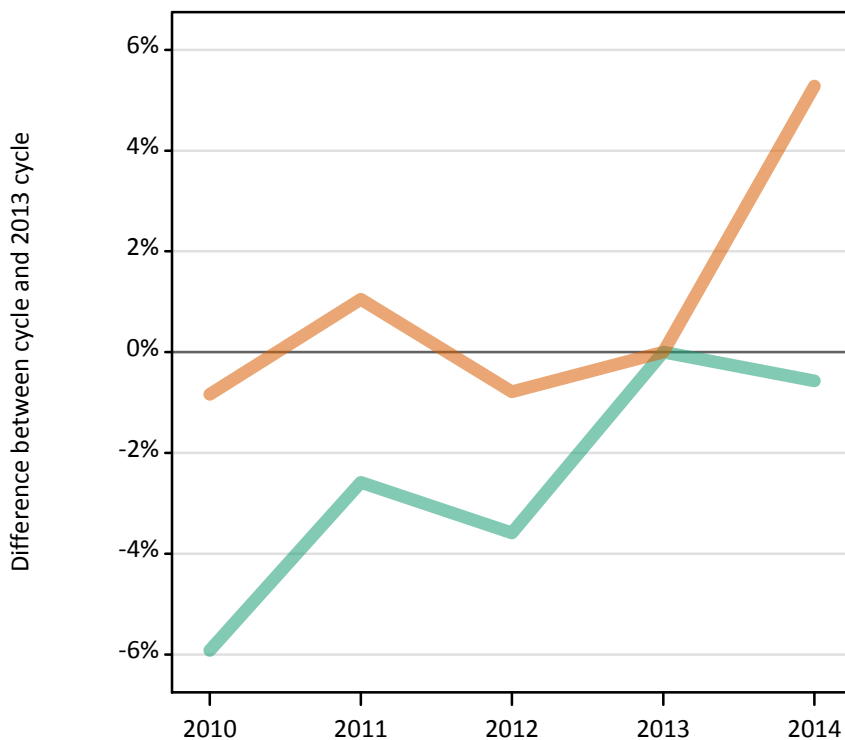
D.2.16 Applicants by age and sex : Northern Ireland

Difference between cycle and 2013 cycle

Age group and sex of applicant		2010	2011	2012	2013	2014
Under 18	Women	83%	39%	89%	0%	-6%
	Men	25%	44%	0%	0%	-38%
18	Women	5%	3%	2%	0%	-2%
	Men	1%	1%	-4%	0%	-2%
19	Women	-20%	0%	-12%	0%	1%
	Men	-15%	2%	-10%	0%	6%
20-24	Women	-19%	-13%	-16%	0%	5%
	Men	-24%	-16%	-17%	0%	0%
25-29	Women	-20%	-17%	-29%	0%	5%
	Men	-10%	6%	-16%	0%	-12%
30-34	Women	-37%	-33%	-35%	0%	2%
	Men	-6%	-5%	-2%	0%	-1%
35 and over	Women	-12%	-17%	-33%	0%	1%
	Men	-8%	-6%	-7%	0%	3%
All ages	Women	-5%	-2%	-6%	0%	-0%
	Men	-7%	-2%	-8%	0%	-0%

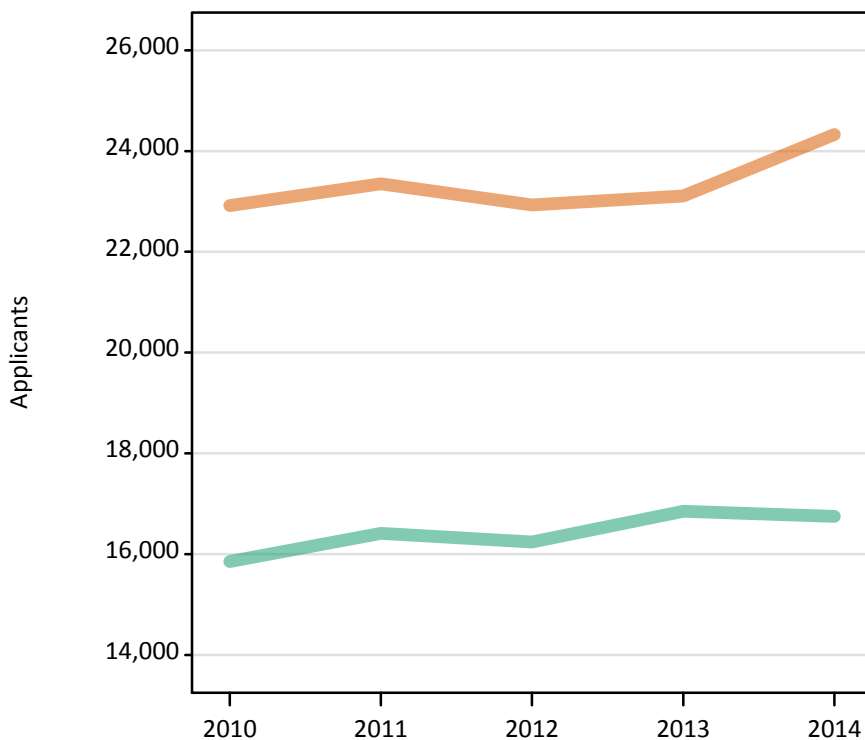
D.2.17 Applicants by sex : Scotland
Difference between cycle and 2013 cycle

Men
Women



D.2.18 Applicants by sex : Scotland

Men
Women



D.2.19 Applicants by age and sex : Scotland

Age group and sex of applicant		2010	2011	2012	2013	2014
Under 18	Women	580	530	480	390	400
	Men	340	340	300	270	250
18	Women	11,210	10,920	10,940	10,870	11,270
	Men	8,350	8,240	8,010	8,060	7,990
19	Women	2,850	3,060	3,110	3,040	3,060
	Men	2,050	2,160	2,230	2,210	2,210
20-24	Women	4,630	5,090	4,960	5,370	5,660
	Men	3,140	3,560	3,690	4,200	4,080
25-29	Women	1,510	1,580	1,540	1,540	1,760
	Men	1,000	1,090	1,000	1,050	1,130
30-34	Women	780	900	780	810	900
	Men	420	490	480	510	510
35 and over	Women	1,360	1,270	1,130	1,090	1,270
	Men	550	540	550	550	590
All ages	Women	22,920	23,350	22,930	23,110	24,330
	Men	15,850	16,410	16,240	16,850	16,750

D.2.20 Applicants by age and sex : Scotland

Difference between cycle and 2013 cycle

Age group and sex of applicant		2010	2011	2012	2013	2014
Under 18	Women	50%	37%	23%	0%	3%
	Men	28%	28%	12%	0%	-8%
18	Women	3%	0%	1%	0%	4%
	Men	4%	2%	-1%	0%	-1%
19	Women	-7%	0%	2%	0%	1%
	Men	-7%	-2%	1%	0%	-0%
20-24	Women	-14%	-5%	-8%	0%	5%
	Men	-25%	-15%	-12%	0%	-3%
25-29	Women	-2%	3%	0%	0%	15%
	Men	-5%	3%	-5%	0%	8%
30-34	Women	-4%	12%	-4%	0%	12%
	Men	-18%	-4%	-5%	0%	-0%
35 and over	Women	25%	17%	4%	0%	17%
	Men	0%	-3%	-1%	0%	6%
All ages	Women	-1%	1%	-1%	0%	5%
	Men	-6%	-3%	-4%	0%	-1%

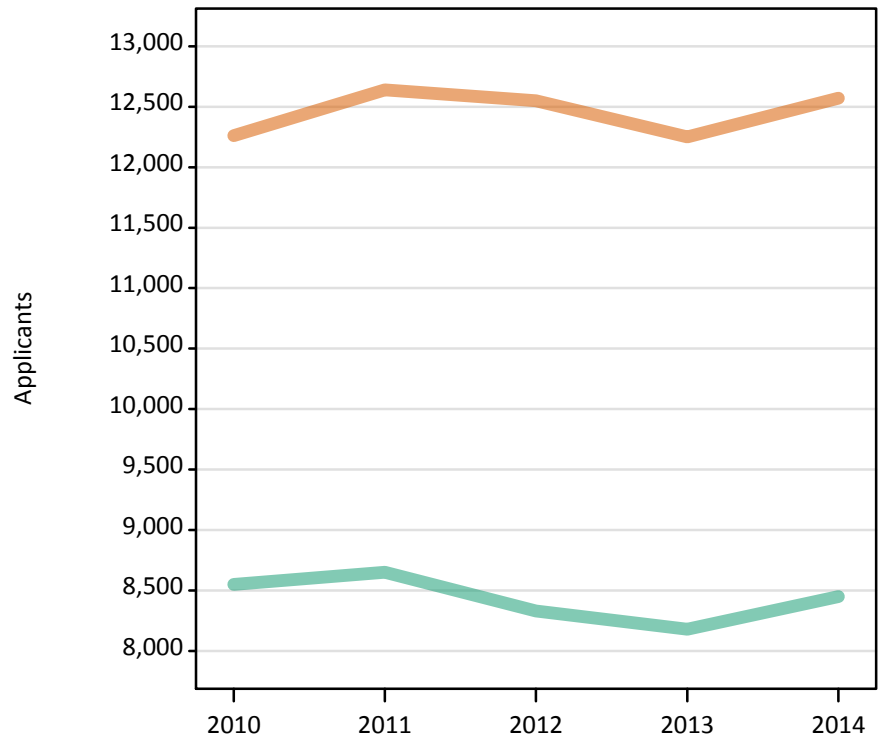
D.2.21 Applicants by sex : Wales
Difference between cycle and 2013 cycle

Men
Women



D.2.22 Applicants by sex : Wales

Men
Women



D.2.23 Applicants by age and sex : Wales

Age group and sex of applicant		2010	2011	2012	2013	2014
Under 18	Women	30	30	10	20	20
	Men	20	20	20	10	10
18	Women	6,670	6,490	6,510	6,320	6,470
	Men	5,010	4,880	4,700	4,590	4,820
19	Women	1,940	2,150	2,100	2,100	2,180
	Men	1,540	1,700	1,650	1,640	1,670
20-24	Women	1,940	2,120	2,100	2,050	2,080
	Men	1,320	1,370	1,390	1,330	1,330
25-29	Women	730	820	770	810	850
	Men	310	340	280	310	320
30-34	Women	390	430	450	420	440
	Men	140	140	150	130	130
35 and over	Women	560	610	600	540	530
	Men	210	200	150	170	170
All ages	Women	12,260	12,640	12,550	12,250	12,570
	Men	8,550	8,650	8,330	8,180	8,450

D.2.24 Applicants by age and sex : Wales

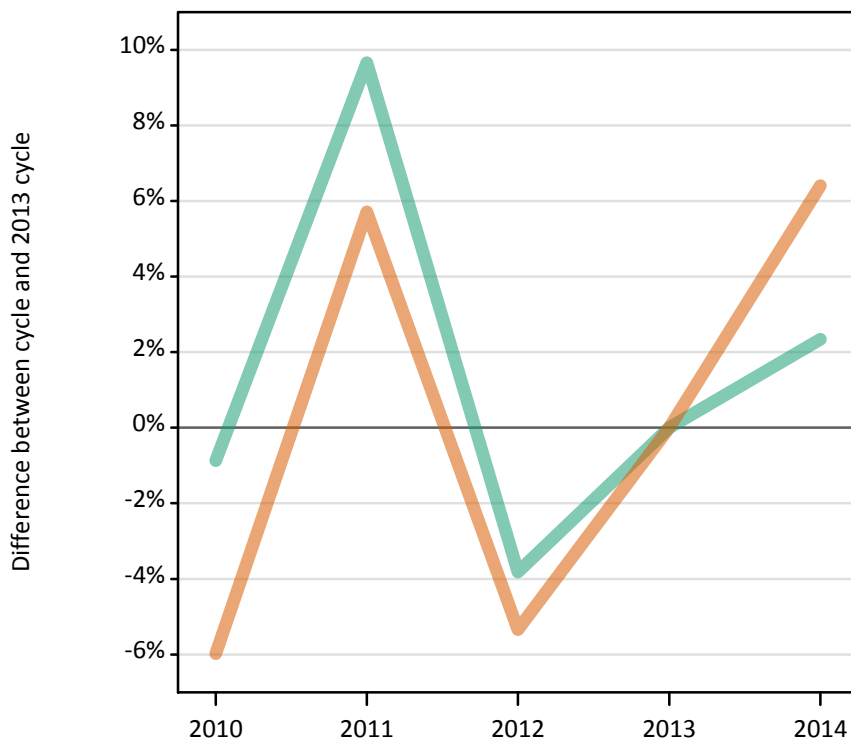
Difference between cycle and 2013 cycle

Age group and sex of applicant		2010	2011	2012	2013	2014
Under 18	Women	21%	21%	-54%	0%	-38%
	Men	50%	33%	25%	0%	0%
18	Women	6%	3%	3%	0%	2%
	Men	9%	6%	2%	0%	5%
19	Women	-8%	2%	0%	0%	4%
	Men	-6%	4%	0%	0%	1%
20-24	Women	-5%	4%	3%	0%	2%
	Men	-1%	3%	4%	0%	0%
25-29	Women	-10%	1%	-5%	0%	5%
	Men	-0%	7%	-10%	0%	2%
30-34	Women	-8%	2%	6%	0%	5%
	Men	9%	13%	18%	0%	0%
35 and over	Women	4%	13%	12%	0%	-2%
	Men	28%	20%	-9%	0%	4%
All ages	Women	0%	3%	2%	0%	3%
	Men	4%	6%	2%	0%	3%

D.2.25 Applicants by sex : EU (excluding UK)

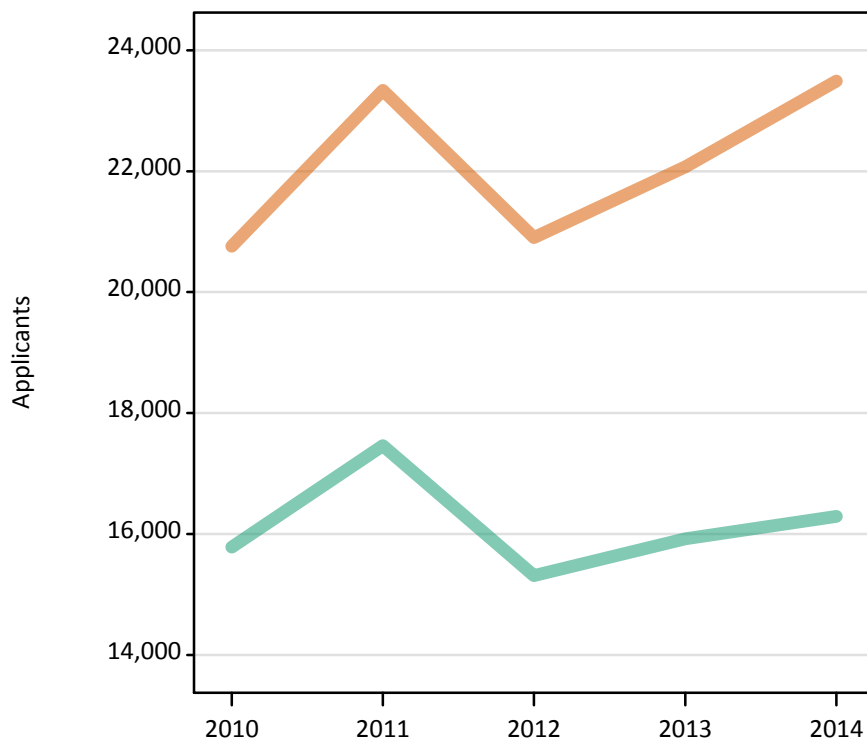
Difference between cycle and 2013 cycle

Men
Women



D.2.26 Applicants by sex : EU (excluding UK)

Men
Women



D.2.27 Applicants by age and sex : EU (excluding UK)

Age group and sex of applicant		2010	2011	2012	2013	2014
Under 18	Women	1,710	1,780	1,740	1,800	2,040
	Men	960	1,060	1,000	1,140	1,190
18	Women	7,180	7,790	7,390	7,810	8,400
	Men	4,780	5,000	5,000	5,180	5,580
19	Women	5,870	6,960	6,290	6,720	7,180
	Men	4,500	5,480	4,690	4,950	4,870
20-24	Women	5,030	5,790	4,650	4,930	5,050
	Men	4,590	4,990	3,930	3,960	4,050
25-29	Women	670	730	550	590	570
	Men	660	640	450	440	410
30-34	Women	170	170	160	140	130
	Men	170	170	140	140	100
35 and over	Women	130	110	110	90	120
	Men	120	120	100	120	90
All ages	Women	20,760	23,340	20,900	22,070	23,490
	Men	15,780	17,460	15,310	15,920	16,290

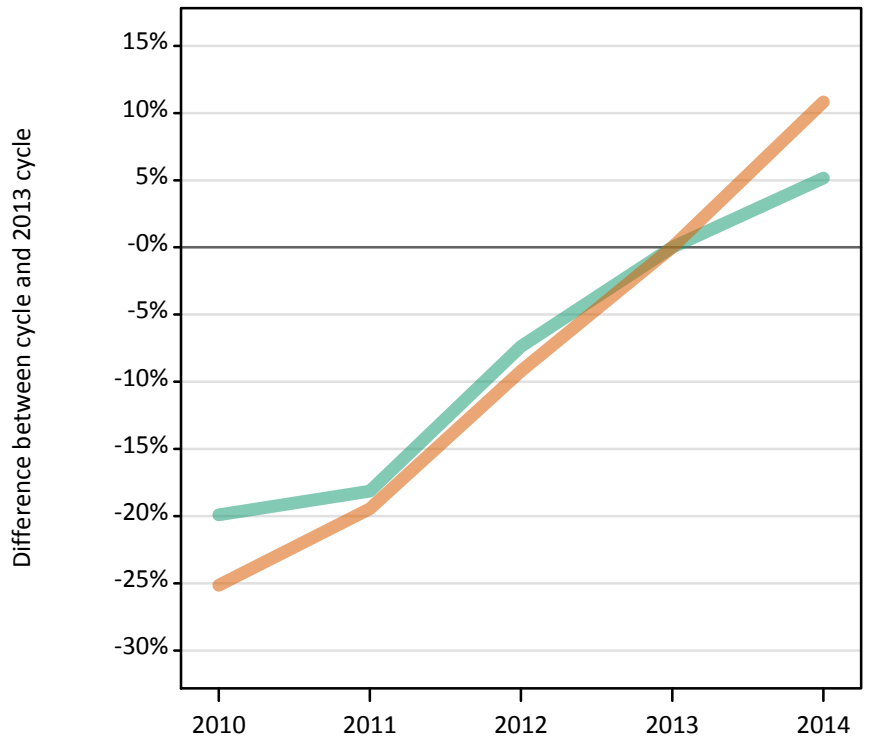
D.2.28 Applicants by age and sex : EU (excluding UK)

Difference between cycle and 2013 cycle

Age group and sex of applicant		2010	2011	2012	2013	2014
Under 18	Women	-5%	-1%	-3%	0%	13%
	Men	-16%	-7%	-12%	0%	5%
18	Women	-8%	-0%	-5%	0%	7%
	Men	-8%	-3%	-3%	0%	8%
19	Women	-13%	4%	-6%	0%	7%
	Men	-9%	11%	-5%	0%	-2%
20-24	Women	2%	17%	-6%	0%	2%
	Men	16%	26%	-1%	0%	2%
25-29	Women	14%	24%	-6%	0%	-3%
	Men	50%	46%	2%	0%	-7%
30-34	Women	23%	29%	15%	0%	-6%
	Men	24%	26%	2%	0%	-24%
35 and over	Women	39%	15%	23%	0%	33%
	Men	1%	-3%	-12%	0%	-20%
All ages	Women	-6%	6%	-5%	0%	6%
	Men	-1%	10%	-4%	0%	2%

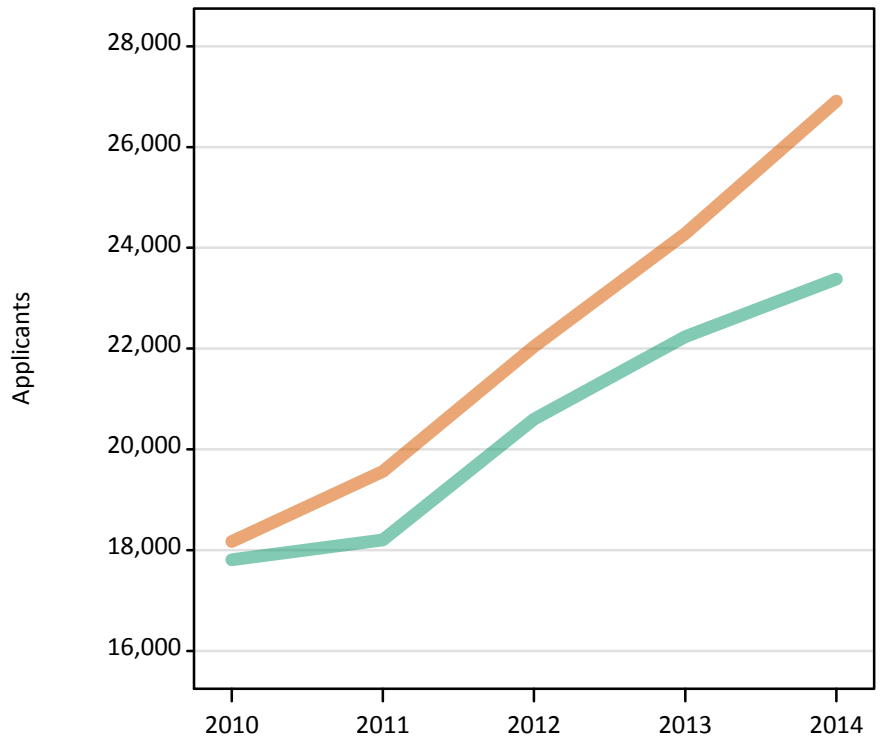
D.2.29 Applicants by sex : Not EU
Difference between cycle and 2013 cycle

Men
Women



D.2.30 Applicants by sex : Not EU

Men
Women



D.2.31 Applicants by age and sex : Not EU

Age group and sex of applicant		2010	2011	2012	2013	2014
Under 18	Women	1,360	1,460	1,760	2,090	2,520
	Men	1,160	1,220	1,600	1,840	2,130
18	Women	6,420	7,090	8,160	9,560	10,530
	Men	5,810	6,150	7,090	8,040	8,690
19	Women	4,980	5,430	6,130	6,510	7,160
	Men	4,720	4,820	5,320	5,550	5,860
20-24	Women	4,430	4,620	5,130	5,280	5,830
	Men	4,900	4,940	5,530	5,780	5,730
25-29	Women	610	620	550	550	570
	Men	760	710	700	690	620
30-34	Women	220	190	180	170	170
	Men	260	230	210	200	210
35 and over	Women	160	150	130	120	130
	Men	210	150	160	130	140
All ages	Women	18,170	19,560	22,040	24,280	26,910
	Men	17,810	18,200	20,600	22,240	23,380

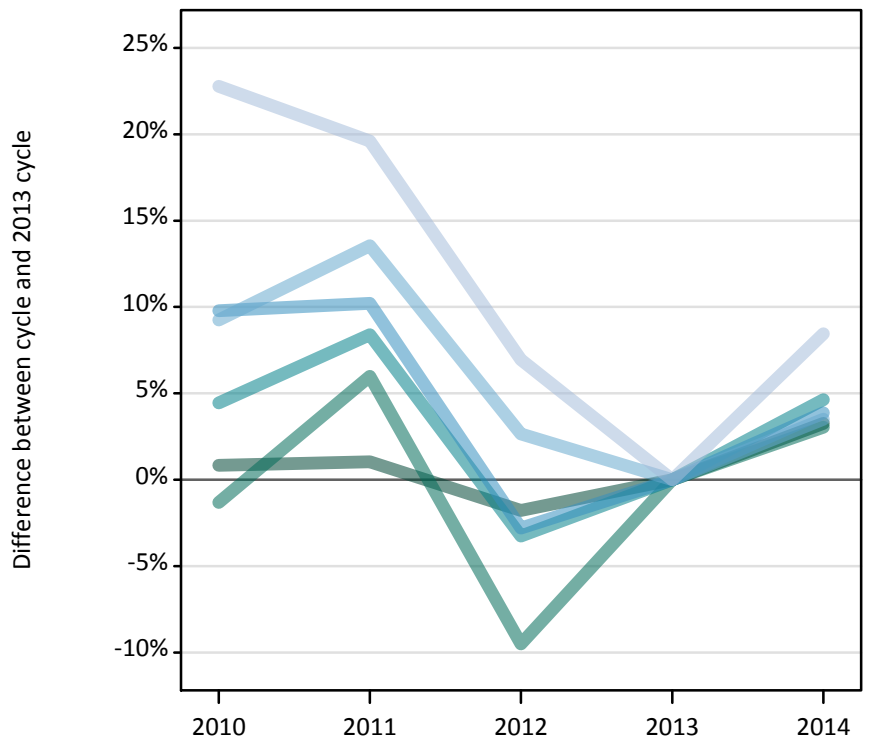
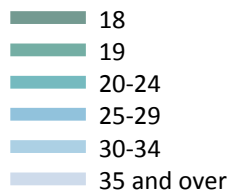
D.2.32 Applicants by age and sex : Not EU

Difference between cycle and 2013 cycle

Age group and sex of applicant		2010	2011	2012	2013	2014
Under 18	Women	-35%	-30%	-16%	0%	20%
	Men	-37%	-34%	-13%	0%	16%
18	Women	-33%	-26%	-15%	0%	10%
	Men	-28%	-24%	-12%	0%	8%
19	Women	-24%	-17%	-6%	0%	10%
	Men	-15%	-13%	-4%	0%	5%
20-24	Women	-16%	-12%	-3%	0%	10%
	Men	-15%	-14%	-4%	0%	-1%
25-29	Women	11%	12%	0%	0%	4%
	Men	9%	2%	0%	0%	-11%
30-34	Women	29%	15%	8%	0%	1%
	Men	30%	12%	5%	0%	6%
35 and over	Women	37%	25%	13%	0%	11%
	Men	65%	14%	21%	0%	11%
All ages	Women	-25%	-19%	-9%	0%	11%
	Men	-20%	-18%	-7%	0%	5%

D.2.33 Applicants by domicile and age : All domiciles

Difference between cycle and 2013 cycle



D.2.34 Applicants by domicile and age : All domiciles

Domicile and age group		2010	2011	2012	2013	2014
All domiciles	Under 18	7,410	7,570	7,810	8,390	9,440
	18	287,660	288,260	280,230	285,290	294,610
	19	113,030	121,390	103,650	114,540	118,030
	20-24	100,560	104,360	93,140	96,280	100,740
	25-29	26,440	26,540	23,410	24,080	25,020
	30-34	13,790	14,330	12,960	12,620	13,060
	35 and over	21,620	21,070	18,840	17,610	19,100

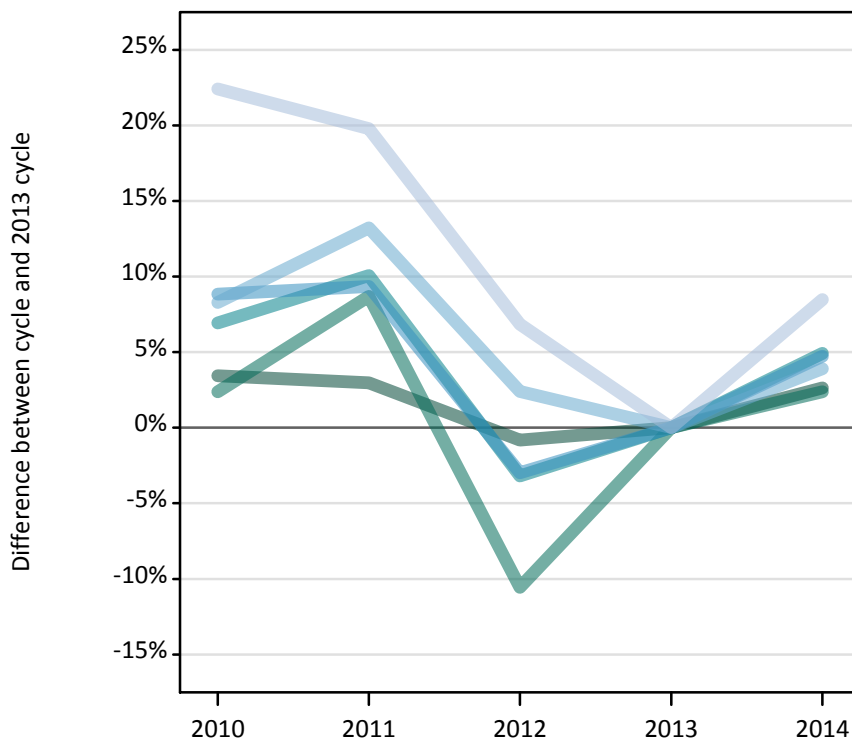
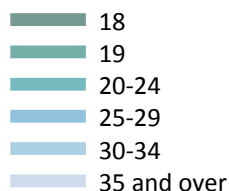
D.2.35 Applicants by domicile and age : All domiciles

Difference between cycle and 2013 cycle

Domicile and age group		2010	2011	2012	2013	2014
All domiciles	Under 18	-12%	-10%	-7%	0%	12%
	18	1%	1%	-2%	0%	3%
	19	-1%	6%	-10%	0%	3%
	20-24	4%	8%	-3%	0%	5%
	25-29	10%	10%	-3%	0%	4%
	30-34	9%	14%	3%	0%	3%
	35 and over	23%	20%	7%	0%	8%

D.2.36 Applicants by domicile and age : UK

Difference between cycle and 2013 cycle



D.2.37 Applicants by domicile and age : UK

Domicile and age group		2010	2011	2012	2013	2014
UK	Under 18	2,230	2,050	1,700	1,530	1,560
	18	263,460	262,250	252,600	254,700	261,420
	19	92,970	98,700	81,220	90,810	92,970
	20-24	81,620	84,010	73,890	76,330	80,080
	25-29	23,740	23,850	21,160	21,810	22,840
	30-34	12,980	13,570	12,270	11,980	12,450
	35 and over	21,000	20,550	18,330	17,160	18,610

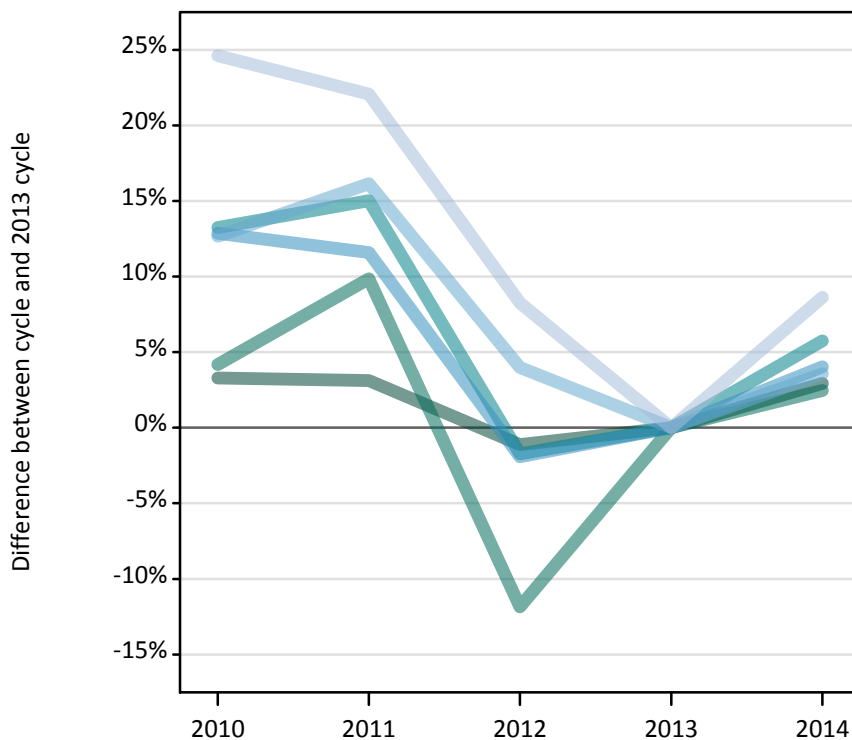
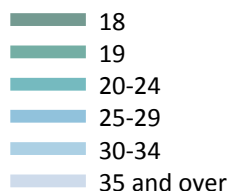
D.2.38 Applicants by domicile and age : UK

Difference between cycle and 2013 cycle

Domicile and age group		2010	2011	2012	2013	2014
UK	Under 18	46%	34%	11%	0%	2%
	18	3%	3%	-1%	0%	3%
	19	2%	9%	-11%	0%	2%
	20-24	7%	10%	-3%	0%	5%
	25-29	9%	9%	-3%	0%	5%
	30-34	8%	13%	2%	0%	4%
	35 and over	22%	20%	7%	0%	8%

D.2.39 Applicants by domicile and age : England

Difference between cycle and 2013 cycle



D.2.40 Applicants by domicile and age : England

Domicile and age group		2010	2011	2012	2013	2014
England	Under 18	1,210	1,080	850	800	860
	18	220,200	219,830	210,790	213,190	219,420
	19	82,250	86,740	69,600	78,950	80,900
	20-24	67,850	68,910	58,880	59,910	63,350
	25-29	19,520	19,300	16,960	17,300	17,990
	30-34	11,010	11,350	10,160	9,770	10,120
	35 and over	17,960	17,590	15,600	14,410	15,660

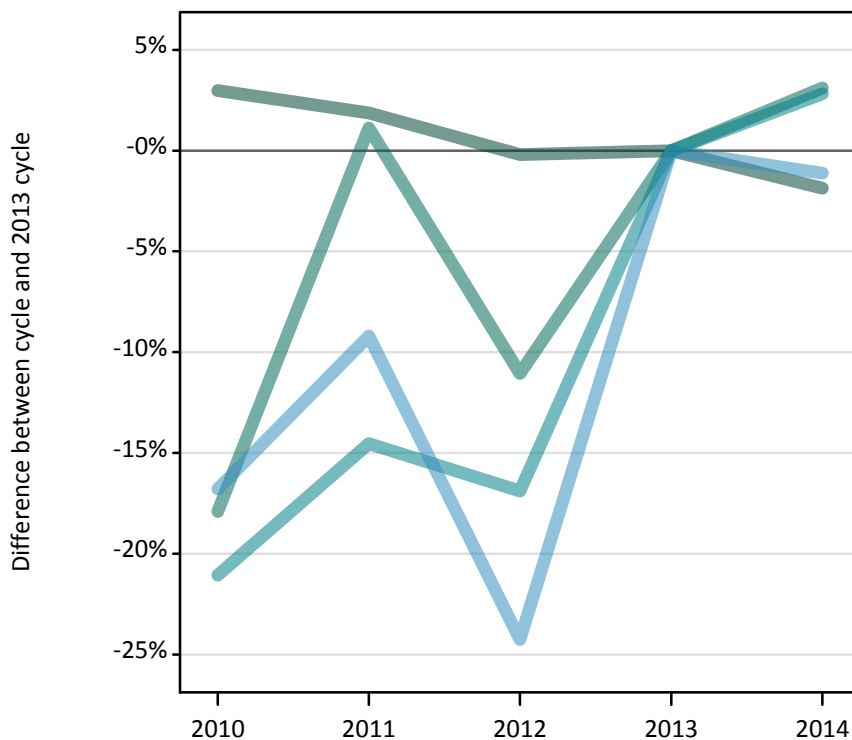
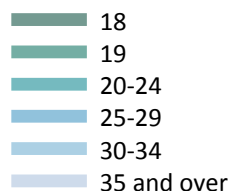
D.2.41 Applicants by domicile and age : England

Difference between cycle and 2013 cycle

Domicile and age group		2010	2011	2012	2013	2014
England	Under 18	51%	35%	6%	0%	8%
	18	3%	3%	-1%	0%	3%
	19	4%	10%	-12%	0%	2%
	20-24	13%	15%	-2%	0%	6%
	25-29	13%	12%	-2%	0%	4%
	30-34	13%	16%	4%	0%	4%
	35 and over	25%	22%	8%	0%	9%

D.2.42 Applicants by domicile and age : Northern Ireland

Difference between cycle and 2013 cycle



D.2.43 Applicants by domicile and age : Northern Ireland

Domicile and age group		2010	2011	2012	2013	2014
Northern Ireland	Under 18	50	50	50	30	30
	18	12,020	11,890	11,650	11,670	11,450
	19	2,350	2,900	2,550	2,870	2,950
	20-24	2,740	2,970	2,890	3,480	3,570
	25-29	670	730	610	800	800
	30-34	250	260	260	350	350
	35 and over	350	340	290	390	400

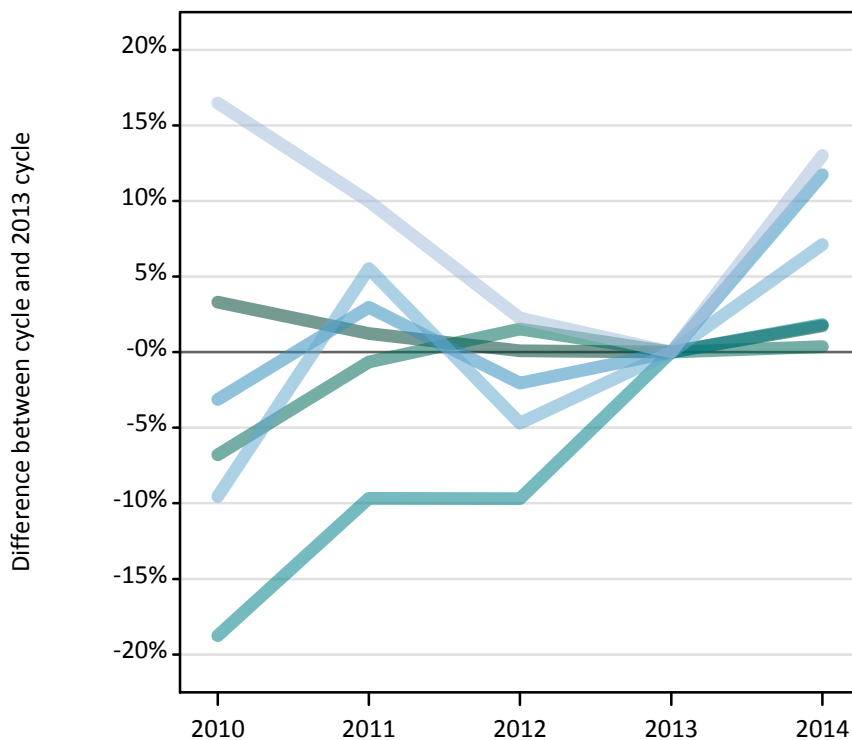
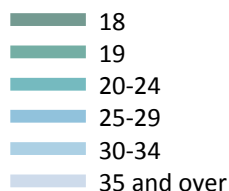
D.2.44 Applicants by domicile and age : Northern Ireland

Difference between cycle and 2013 cycle

Domicile and age group		2010	2011	2012	2013	2014
Northern Ireland	Under 18	56%	41%	47%	0%	-21%
	18	3%	2%	-0%	0%	-2%
	19	-18%	1%	-11%	0%	3%
	20-24	-21%	-15%	-17%	0%	3%
	25-29	-17%	-9%	-24%	0%	-1%
	30-34	-28%	-26%	-26%	0%	1%
	35 and over	-11%	-14%	-26%	0%	2%

D.2.45 Applicants by domicile and age : Scotland

Difference between cycle and 2013 cycle



D.2.46 Applicants by domicile and age : Scotland

Domicile and age group		2010	2011	2012	2013	2014
Scotland	Under 18	920	870	780	660	650
	18	19,560	19,160	18,950	18,930	19,260
	19	4,890	5,220	5,330	5,250	5,270
	20-24	7,770	8,640	8,640	9,570	9,740
	25-29	2,510	2,670	2,540	2,590	2,890
	30-34	1,190	1,390	1,260	1,320	1,410
	35 and over	1,920	1,810	1,680	1,640	1,860

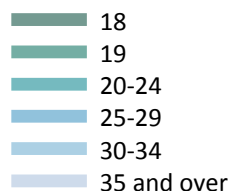
D.2.47 Applicants by domicile and age : Scotland

Difference between cycle and 2013 cycle

Domicile and age group		2010	2011	2012	2013	2014
Scotland	Under 18	41%	33%	19%	0%	-1%
	18	3%	1%	0%	0%	2%
	19	-7%	-1%	2%	0%	0%
	20-24	-19%	-10%	-10%	0%	2%
	25-29	-3%	3%	-2%	0%	12%
	30-34	-10%	6%	-5%	0%	7%
	35 and over	16%	10%	2%	0%	13%

D.2.48 Applicants by domicile and age : Wales

Difference between cycle and 2013 cycle



D.2.49 Applicants by domicile and age : Wales

Domicile and age group		2010	2011	2012	2013	2014
Wales	Under 18	50	50	30	40	30
	18	11,680	11,370	11,210	10,910	11,280
	19	3,480	3,850	3,740	3,740	3,850
	20-24	3,250	3,490	3,490	3,380	3,420
	25-29	1,050	1,150	1,060	1,120	1,170
	30-34	530	570	600	550	570
	35 and over	780	810	760	710	700

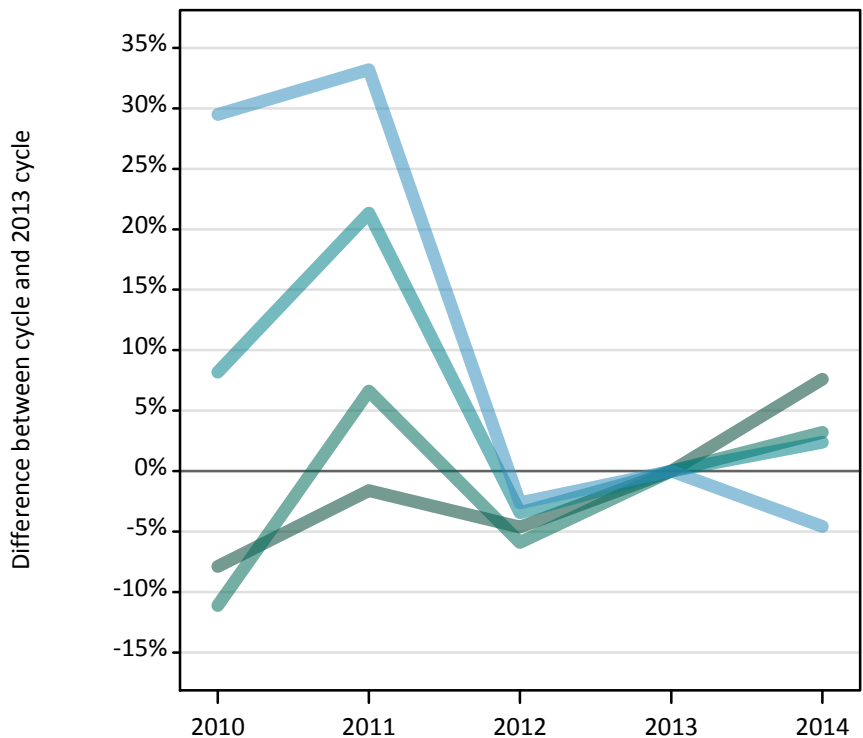
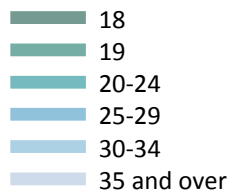
D.2.50 Applicants by domicile and age : Wales

Difference between cycle and 2013 cycle

Domicile and age group		2010	2011	2012	2013	2014
Wales	Under 18	31%	25%	-28%	0%	-25%
	18	7%	4%	3%	0%	3%
	19	-7%	3%	0%	0%	3%
	20-24	-4%	3%	3%	0%	1%
	25-29	-7%	3%	-6%	0%	4%
	30-34	-4%	4%	9%	0%	4%
	35 and over	10%	15%	7%	0%	-1%

D.2.51 Applicants by domicile and age : EU (excluding UK)

Difference between cycle and 2013 cycle



D.2.52 Applicants by domicile and age : EU (excluding UK)

Domicile and age group		2010	2011	2012	2013	2014
EU (excluding UK)	Under 18	2,670	2,850	2,740	2,930	3,230
	18	11,970	12,780	12,390	12,990	13,980
	19	10,370	12,440	10,980	11,670	12,040
	20-24	9,620	10,790	8,580	8,890	9,100
	25-29	1,330	1,370	1,000	1,030	980
	30-34	330	350	290	270	230
	35 and over	250	220	220	210	220

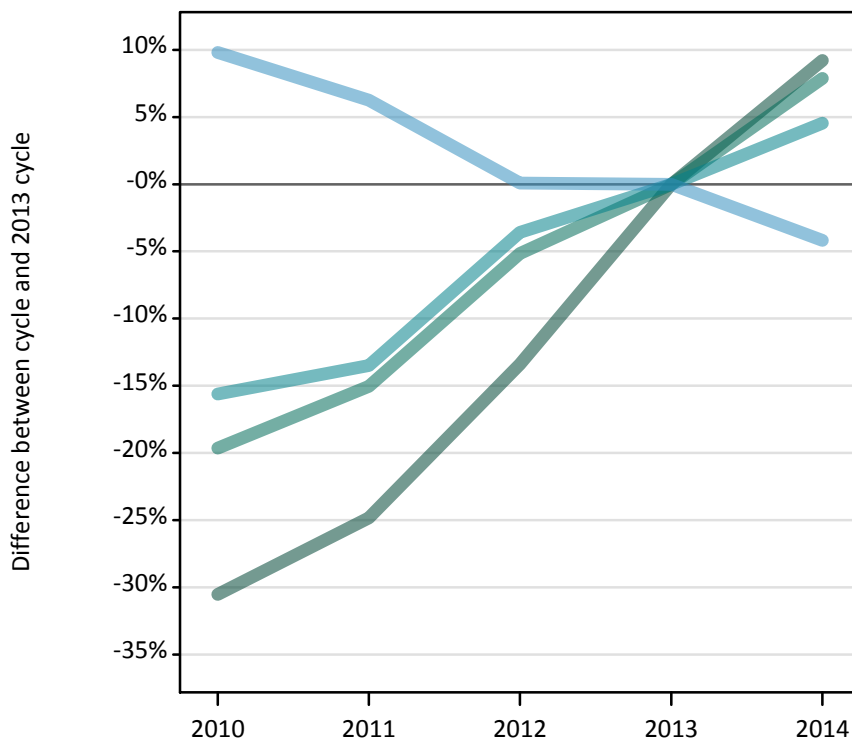
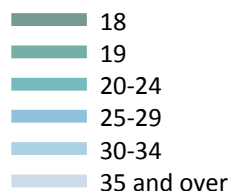
D.2.53 Applicants by domicile and age : EU (excluding UK)

Difference between cycle and 2013 cycle

Domicile and age group		2010	2011	2012	2013	2014
EU (excluding UK)	Under 18	-9%	-3%	-7%	0%	10%
	18	-8%	-2%	-5%	0%	8%
	19	-11%	7%	-6%	0%	3%
	20-24	8%	21%	-3%	0%	2%
	25-29	30%	33%	-3%	0%	-5%
	30-34	23%	28%	8%	0%	-15%
	35 and over	18%	5%	3%	0%	3%

D.2.54 Applicants by domicile and age : Not EU

Difference between cycle and 2013 cycle



D.2.55 Applicants by domicile and age : Not EU

Domicile and age group		2010	2011	2012	2013	2014
Not EU	Under 18	2,510	2,680	3,370	3,930	4,650
	18	12,230	13,230	15,240	17,600	19,220
	19	9,700	10,250	11,440	12,060	13,020
	20-24	9,330	9,560	10,660	11,060	11,560
	25-29	1,370	1,320	1,250	1,250	1,190
	30-34	480	420	390	370	380
	35 and over	370	290	290	250	270

D.2.56 Applicants by domicile and age : Not EU

Difference between cycle and 2013 cycle

Domicile and age group		2010	2011	2012	2013	2014
Not EU	Under 18	-36%	-32%	-14%	0%	18%
	18	-31%	-25%	-13%	0%	9%
	19	-20%	-15%	-5%	0%	8%
	20-24	-16%	-14%	-4%	0%	5%
	25-29	10%	6%	0%	0%	-4%
	30-34	30%	14%	6%	0%	4%
	35 and over	52%	19%	17%	0%	11%

D.2.57 Technical notes and definitions

Applicants have been able to submit applications for all 2014 courses since early September.

Counts of the number of applicants reported have been rounded to the nearest 10 applicants, this may result in instances where totals do not equal the sum of the components. Proportional changes have been rounded to the nearest whole percentage point.

The Channel Islands and the Isle of Man are assigned as 'Not EU'. The previous January statistical release assigned the Channel Islands and Isle of Man in the 'UK' therefore the figures for earlier cycles may not match the previous January statistical release.

Age

This statistical release uses country-specific age definitions which align with the cut off points for school/college cohorts within the different administrations of the UK. For England and Wales ages are defined on the 31 August, for Northern Ireland on the 1 July and for Scotland on the 28 February the following year. Defining ages in this way matches the assignment of children to school cohorts. For applicants outside of the UK the cohort cut off for England and Wales has been used.

Applicant

A person who has made an application in the UCAS system during the cycle reported, this includes those who submit applications for deferred entry.

Application

An application to a course at an institution made by an applicant. Applicants may make up to five applications.

Country of institution

The UK country of the institution applied to.

Domicile

Declared area of permanent residence. The Channel Islands and the Isle of Man have been assigned as 'Not EU'.

First time applicant

An applicant that did not apply to the UCAS scheme in the previous cycle.

Reapplicant

An applicant that applied to the UCAS scheme in the previous cycle.

Subject group

The JACS3 classification used to classify courses into subject groups.

Tariff group of institution

Institutions are grouped as higher, medium or lower tariff based on their average levels of attainment of their accepted applicants (summarised through UCAS Tariff points) in recent cycles. Each group of institutions accounted for around a third of all UK 18 year old acceptances in recent cycles.